

STREETS IN SOUTH SENECA GARDENS 4TH ADDN.

GOLD

N.L. 55TH ST. S. TO S.L. LOCKWOOD

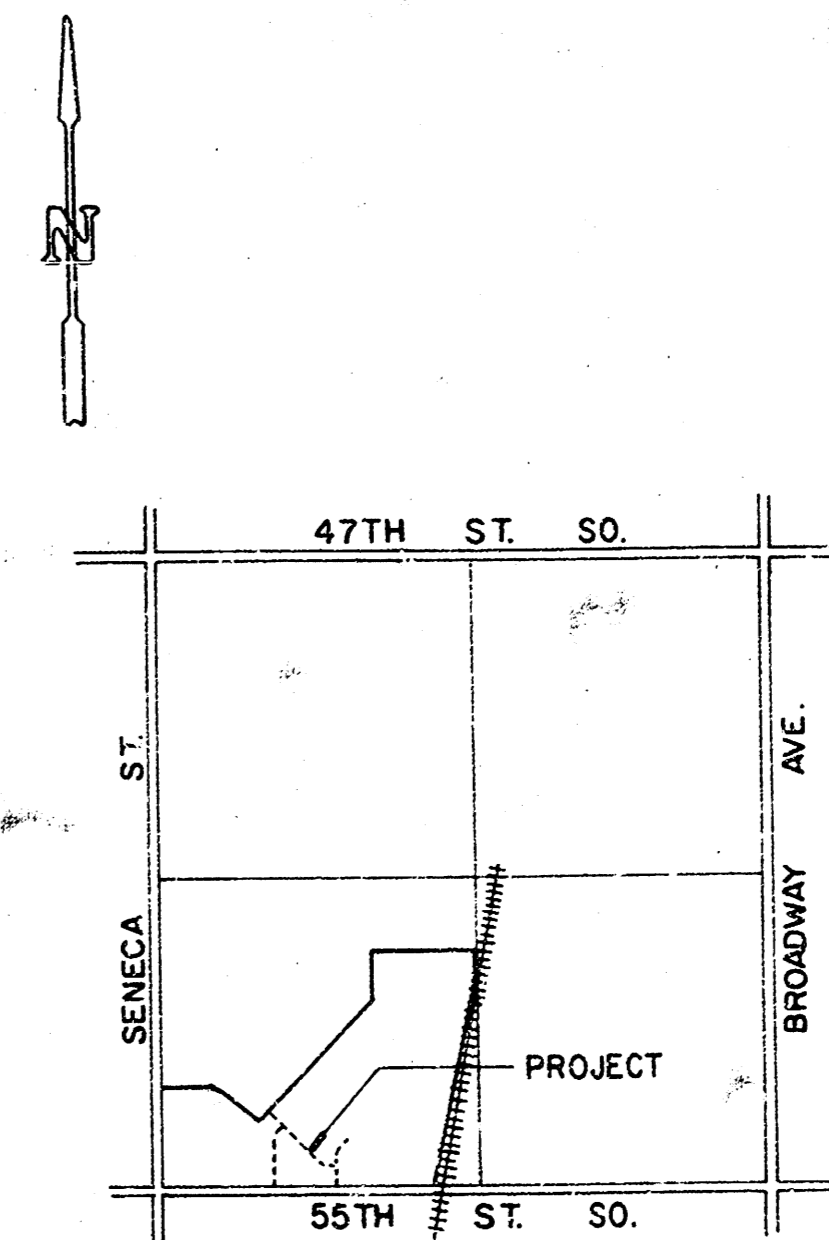
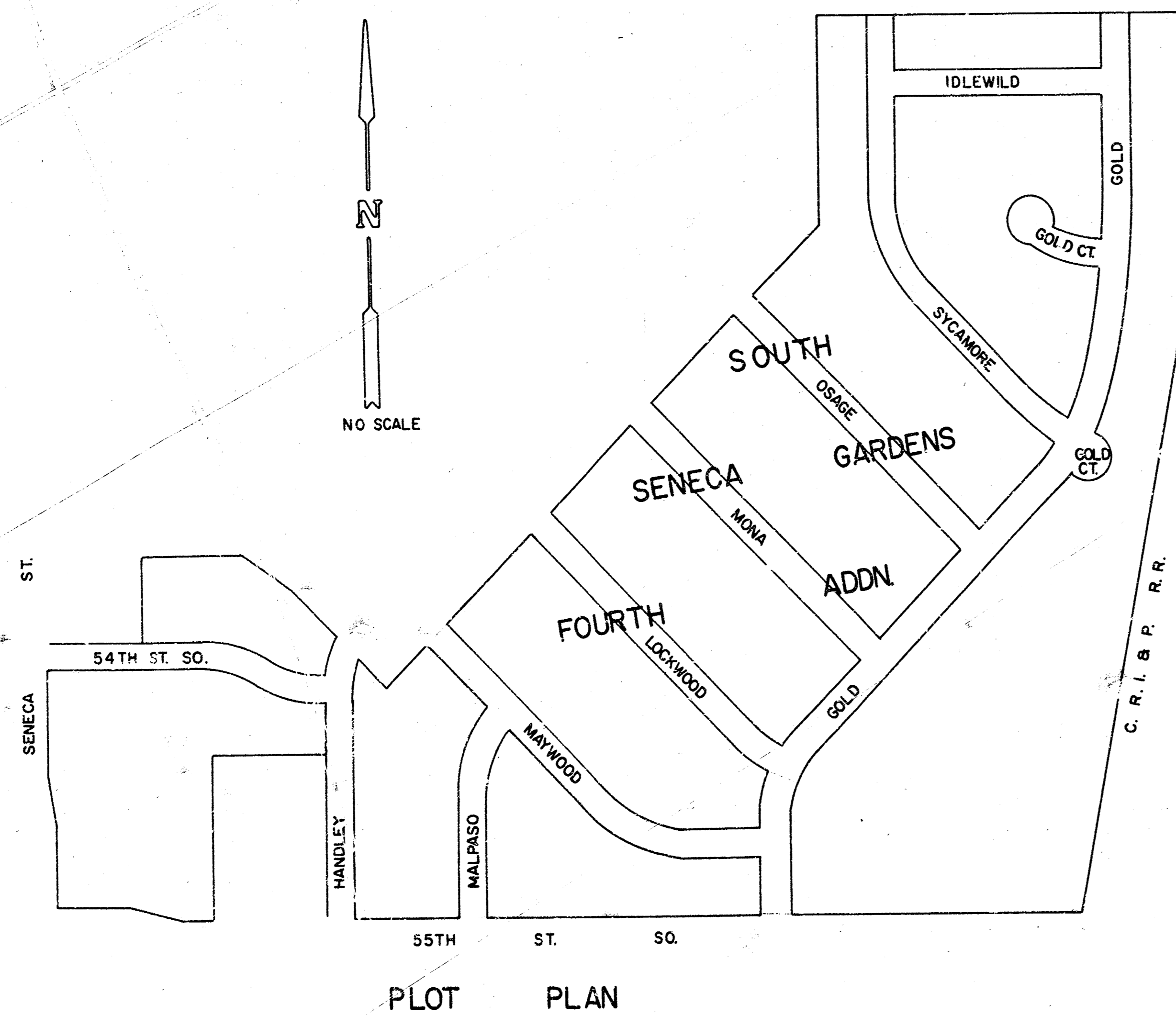
MAYWOOD

W.L. BLK. 5 TO W.L. GOLD

MALPASO

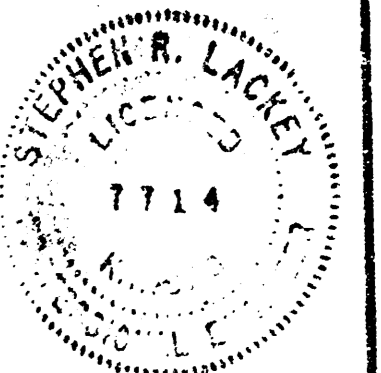
N.L. 55TH ST. S. TO S.L. MAYWOOD

DEAN S. SELLERS-ACTING CITY ENGINEER
 CITY OF WICHITA, KANSAS
 PROJ. NO. 472 76 245 80822 000 000 001
 DATE:

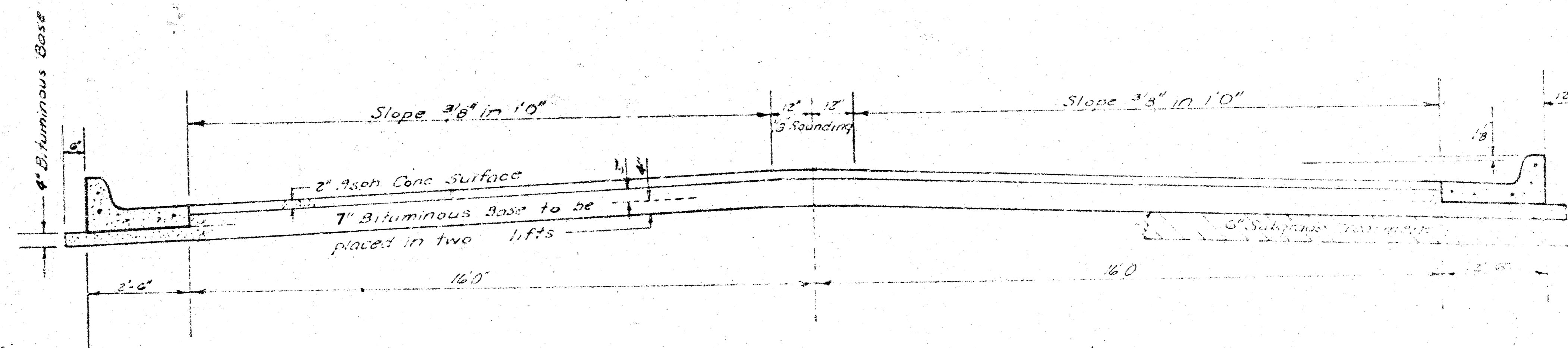


NOTE: ENGINEER TO TAKE CROSS-SECTIONS
 PRIOR TO CONSTRUCTION.

6,550 S.Y. Manipulation



GOLD
N. L. 55TH ST. S. TO S. L. LOCKWOOD



TYPICAL SECTION

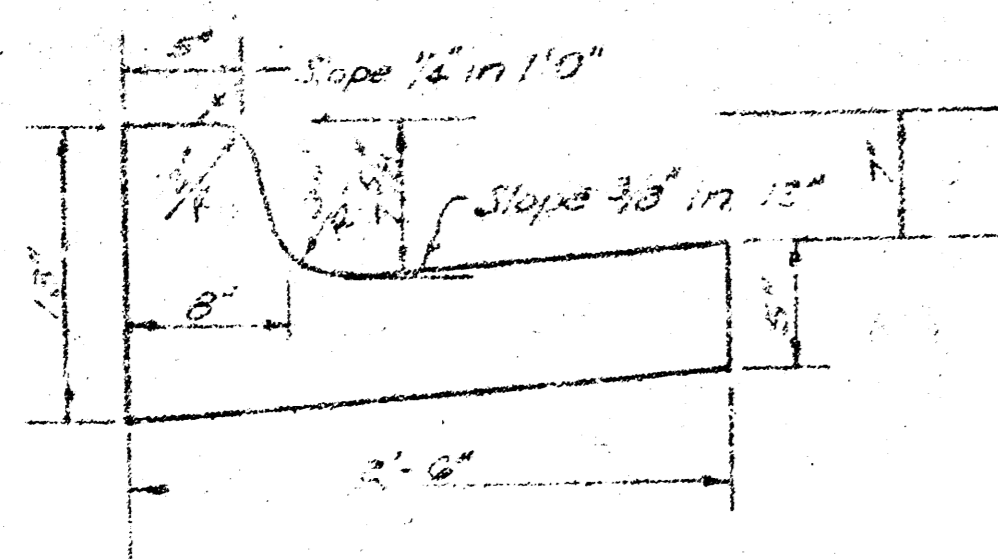
37' ASPHALTIC CONCRETE PAVEMENT WITH BITUMINOUS BASE

A TACK COAT OF EMULSIFIED ASPHALT (SS-1H) SHALL BE APPLIED AT AN APPROXIMATE RATE 0.05 GALLONS PER SQ YD BETWEEN LIFTS OF ASPHALTIC MATERIALS WHEN ORDERED BY THE ENGINEER. TACK COAT WILL NOT BE PAID FOR DIRECTLY AND SHALL BE CONSIDERED AS SUBSIDIARY TO PRICE BID FOR ASPHALTIC PAVEMENT.

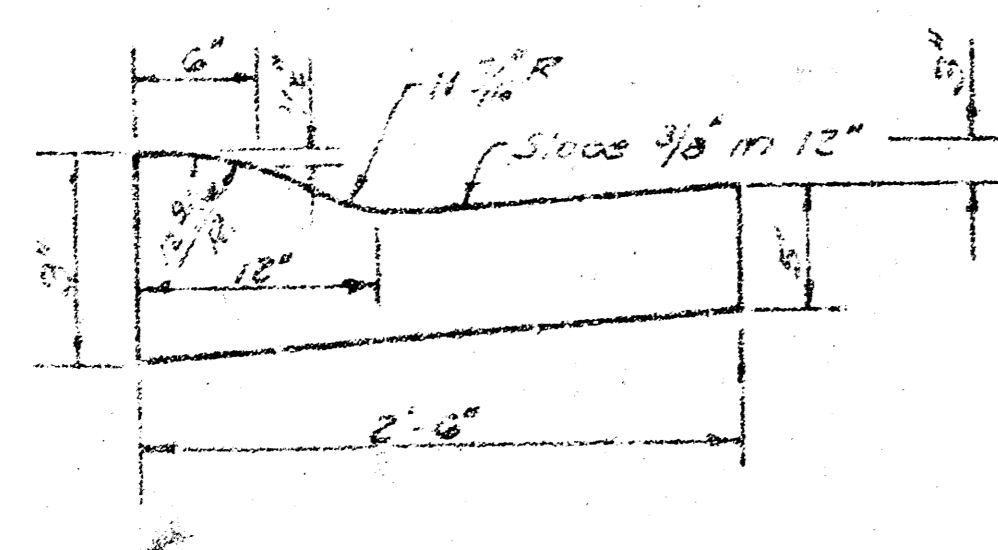
BITUMINOUS BASE AND ASPHALTIC CONCRETE WEARING SURFACE SHALL BE PLACED WITH A LAYDOWN MACHINE HAVING AUTOMATIC CONTROLS FOR CROWN AND GRADE. CONSTRUCTION JOINTS IN EACH LIFT SHALL BE STAGGERED A MINIMUM DISTANCE OF 1' WITH JOINTS IN PRECEDING LIFTS AND PLACED SUCH THAT A JOINT WILL BE CONSTRUCTED ON THE CENTERLINE IN THE TOP LIFT.

The A.C. Pavement between the curb and 7' center line shall be paid as Class 9 (the treatment 7" bituminous base). The bituminous base under the curb and gutter shall be paid as Class 4" bituminous base.

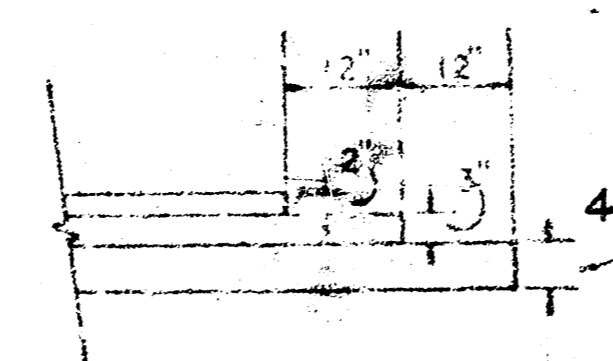
COMBINED CURB & GUTTER



ROLL TYPE CURB & GUTTER



DETAIL OF TRANSVERSE CONSTRUCTION JOINTS



TRANSVERSE CONSTRUCTION JOINTS SHALL BE CONSTRUCTED IN FLEXIBLE BASE PAVEMENTS AT LOCATIONS WHERE PAVEMENT TEMPORARILY ENDS TO FACILITATE FUTURE PAVEMENT CONSTRUCTION AS SHOWN BY DETAIL. THE COST OF CONSTRUCTING THE TRANSVERSE CONSTRUCTION JOINTS SHALL NOT BE MEASURED OR PAID FOR DIRECTLY BUT SHALL BE INCLUDED IN THE BID PRICE FOR SQUARE YARDS OF ASPHALTIC CONCRETE PAVEMENT.

CITY OF WICHITA KANSAS

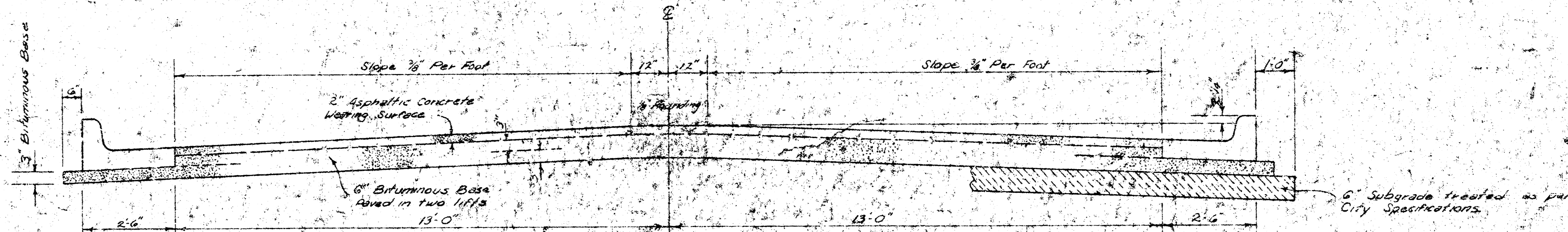
DEPARTMENT of PUBLIC WORKS - Engineering
Division

DEAN BELLERS ACTING CITY ENGINEER

DATE _____ Proj. No. 472 76 245 90822000 000 001

MAYWOOD
 W. L. BLK 5 SOUTH SENECA
 GARDENS 4TH ADDN. TO W. L. GOLD

MALPASO
 N. L. 55TH ST. S. TO S. L. MAYWOOD



TYPICAL SECTION

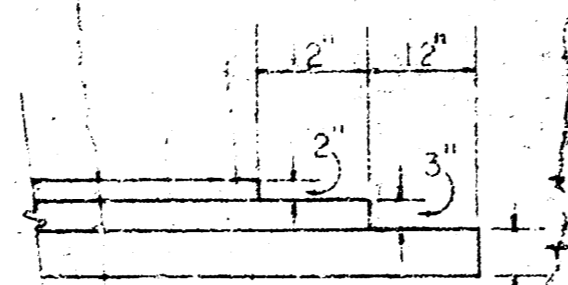
3' ASPHALTIC CONCRETE PAVEMENT WITH BITUMINOUS BASE

The A.C. pavement between the Comb. Curb & gutter shall be paid as 3% Yds. 6" A.C. Pavement (6" Bituminous Base). The Bituminous Base under the Comb. Curb & gutter shall be paid as 3% Yds. 3" Bituminous Base.

A TACK COAT OF EMULSIFIED ASPHALT (SS-1H) SHALL BE APPLIED AT AN APPROXIMATE RATE OF 0.05 GALLONS PER SQ. YD. BETWEEN LIFTS OF ASPHALTIC MATERIALS WHEN ORDERED BY THE ENGINEER. TACK COAT WILL NOT BE PAID FOR DIRECTLY AND SHALL BE CONSIDERED AS SUBSIDIARY TO PRICE BID FOR ASPHALTIC PAVEMENT.

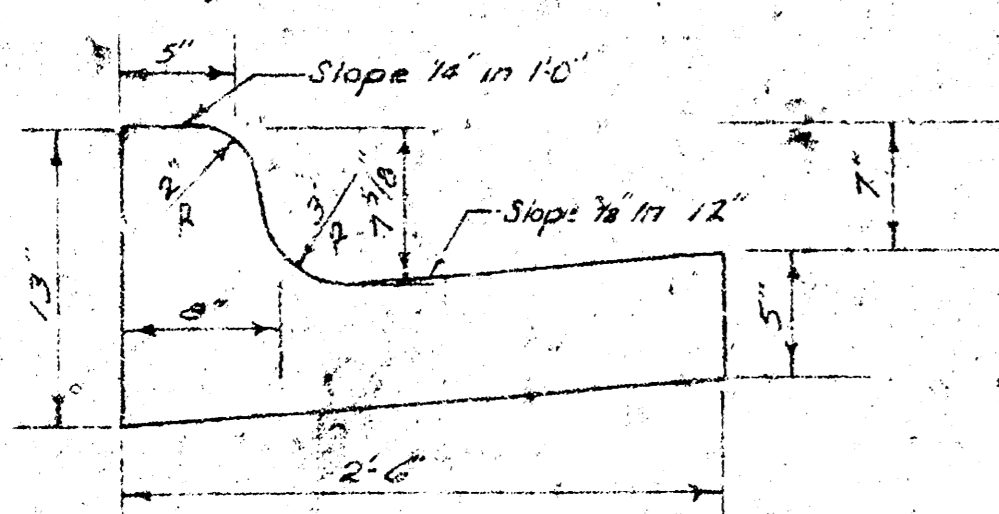
BITUMINOUS BASE AND ASPHALTIC CONCRETE WEARING SURFACE SHALL BE PLACED WITH A LAYDOWN MACHINE HAVING AUTOMATIC ELECTRONIC CONTROLS FOR CROWN AND GRADE. CONSTRUCTION JOINTS IN EACH LIFT SHALL BE STAGGERED A MINIMUM DISTANCE OF 7' WITH JOINTS IN PRECEDING LIFTS AND SUCH THAT A JOINT WILL BE CONSTRUCTED ON THE PAVEMENT CENTERLINE IN THE TOP LIFT.

DETAIL OF TRANSVERSE CONSTRUCTION JOINTS

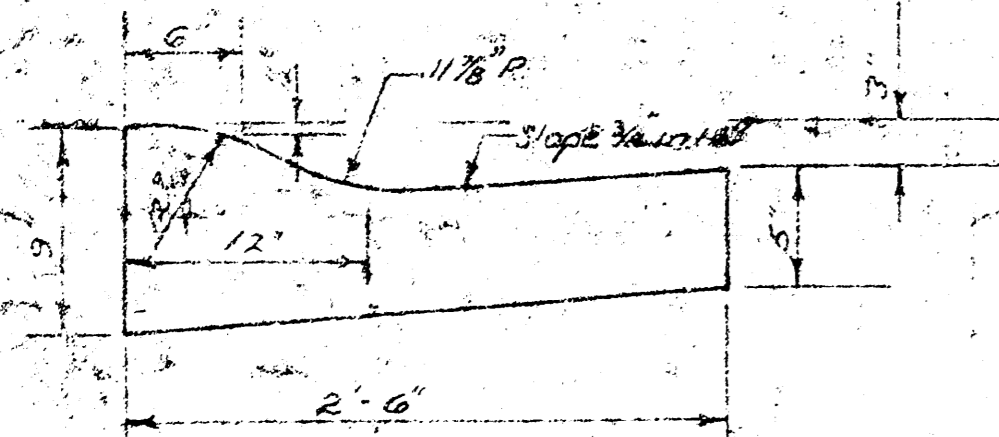


TRANSVERSE CONSTRUCTION JOINTS SHALL BE CONSTRUCTED IN FLEXIBLE BASE PAVEMENTS AT LOCATIONS WHERE PAVEMENT TEMPORARILY ENDS TO FACILITATE FUTURE PAVEMENT CONSTRUCTION AS SHOWN BY DETAIL. THE COST OF CONSTRUCTING THE TRANSVERSE CONSTRUCTION JOINTS SHALL NOT BE MEASURED OR PAID FOR DIRECTLY BUT SHALL BE INCLUDED IN THE BID PRICE FOR SQUARE YARDS OF ASPHALTIC CONCRETE PAVEMENT.

COMBINED CURB & GUTTER



ROLL TYPE CURB & GUTTER



CITY OF WICHITA, KANSAS

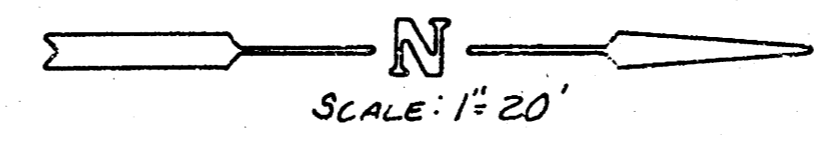
DEPARTMENT OF PUBLIC WORKS — ENGINEERING

DEAN SELLERS ACTING CITY ENGINEER

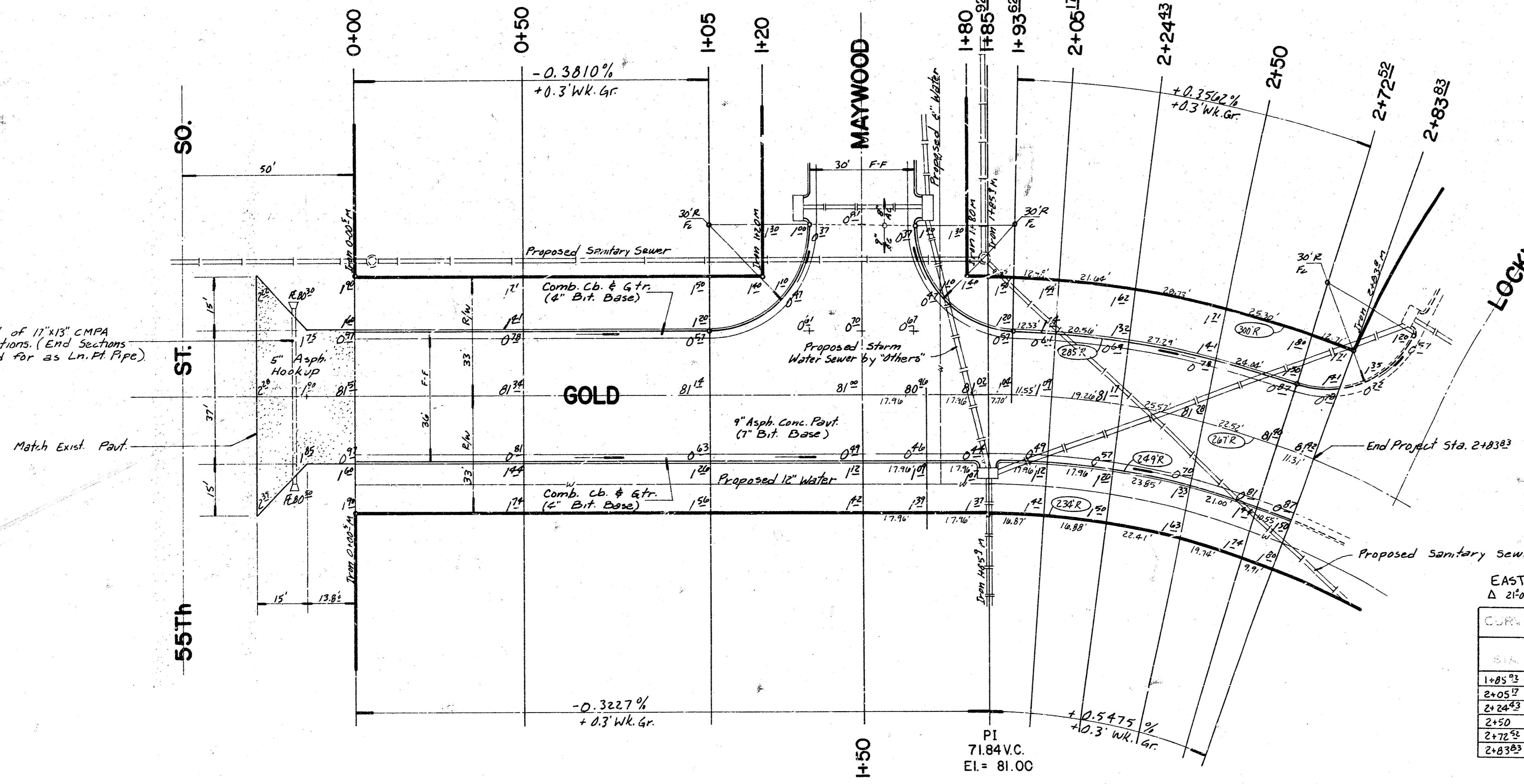
DATE _____ PROJ. NO. 472 76 245 80822000 000 001

FILMED FROM THE BEST AVAILABLE COPY

B.M. = 82.05 - R.R. Spike NE E. 7th Blk. N side 55th St. 30' W of W.L. Gold
 B.M. = 81.36 - City Disc. 45' W & 40' N of Quart. Sec. Cor.



is E Gold



Install 54' of 11" x 13" CMPA w/ End Sections (End Sections to be paid for as Lin. Ft. Pipe)

Match Exist. Pavt.

WEST CURB
 Δ 2100-38 R 26700 T 49.51' L 97.91' LC 97.36'

STA	CHORD	DELTA	LC	LC
1+85.75			0°00'00"	
1+73.42	7.70'	8.45'	0°49'54"	0°44'54"
2+05.57	11.55'	12.07'	1°14'22"	2°03'56"
2+26.43	19.26'	21.13'	2°03'59"	4°07'55"
2+50	25.57'	28.05'	2°44'37"	6°52'32"
2+72.52	22.52'	24.71'	2°24'58"	4°17'30"
2+83.83	11.31'	12.41'	1°12'47"	10°30'19"

EAST CURB
 Δ 2100-38 R 26700 T 49.51' L 97.91' LC 97.36' Defl. = 6.43773 mm/ft.

STA	CHORD	DELTA	LC	LC
1+85.75			0°00'00"	
2+05.57	19.25'	17.37'	2°03'56"	2°03'56"
2+26.43	19.26'	17.38'	2°03'56"	4°07'55"
2+50	25.57'	23.07'	2°44'37"	6°52'32"
2+72.52	22.52'	20.32'	2°24'58"	4°17'30"
2+83.83	11.31'	10.21'	1°12'47"	10°30'19"

Defl. = 6.43773 mm/ft.

Denotes Storm Sewer Inlet by "Others"

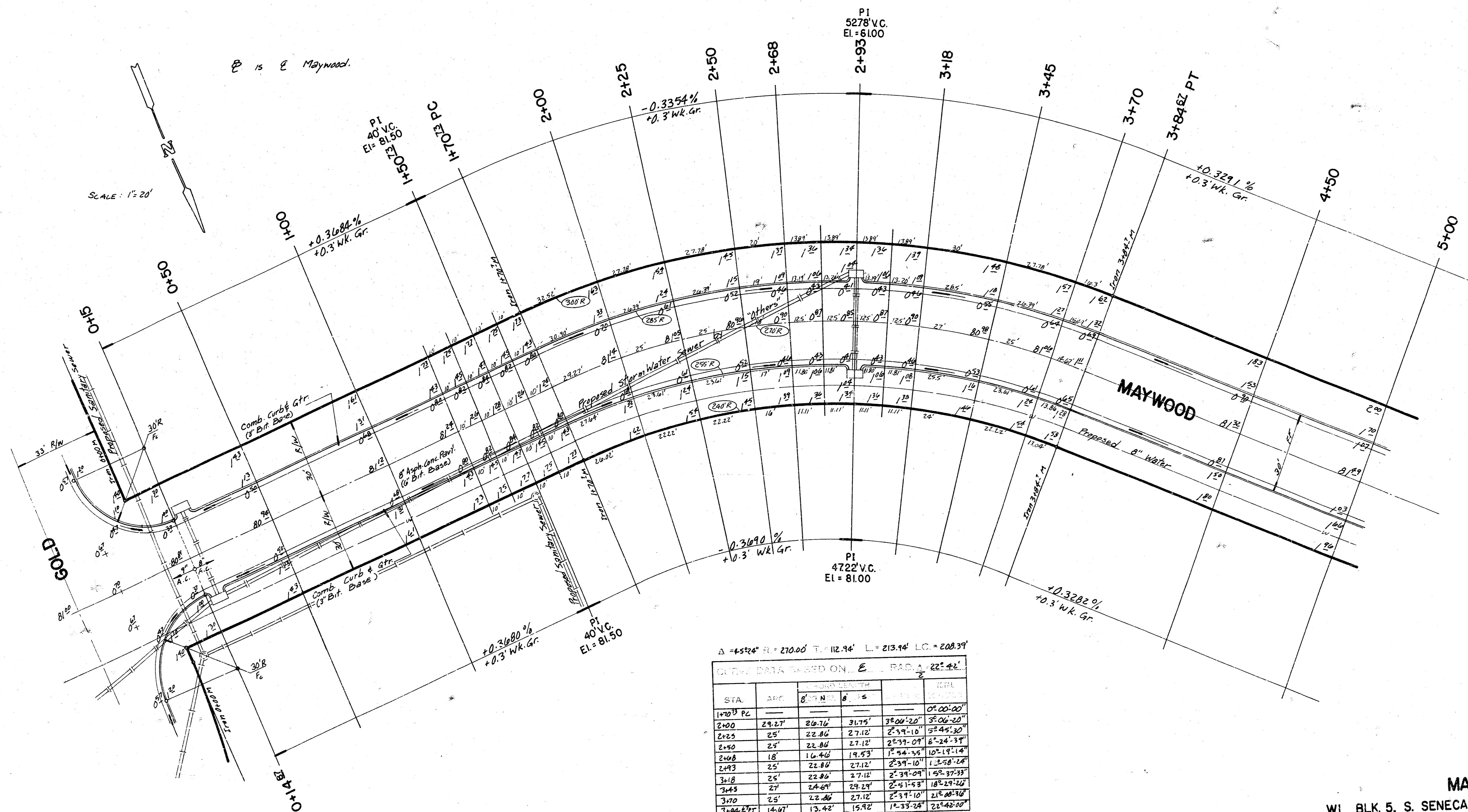
Notes: Contractor to coordinate work with Sewer Contractors.

TYPE OF CURB AND SIDEWALK SHALL BE DETERMINED BY THE CONTRACTOR. THE CONTRACTOR SHALL BE RESPONSIBLE FOR OBTAINING ALL NECESSARY PERMITS AND APPROVALS FROM THE CITY OF GOLD AND THE STATE OF CALIFORNIA.

B.M. = 81.03 - R.R. Spike S-Fc. PP NW Cor. Lockwood & Southwind.

E is E Maywood.

SCALE: 1" = 20'



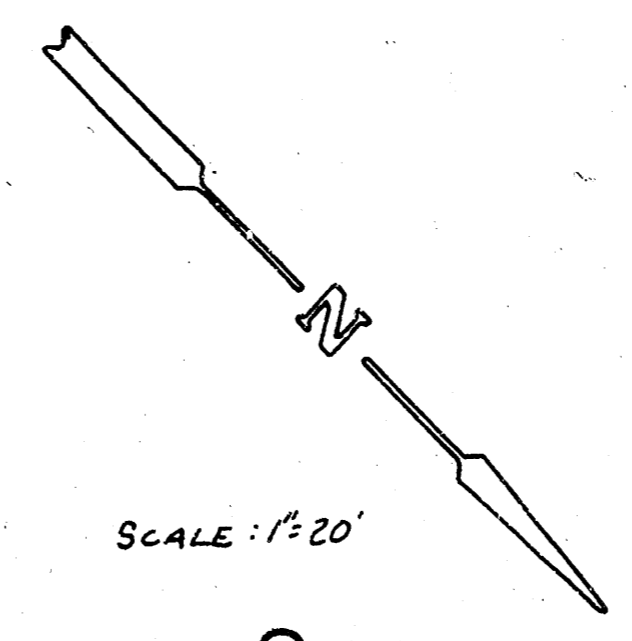
$\Delta = 45^{\circ}24'$ R = 270.00' T = 112.94' L = 213.94' LC = 208.39'

DATA BASED ON E. RAD. 22° 42'

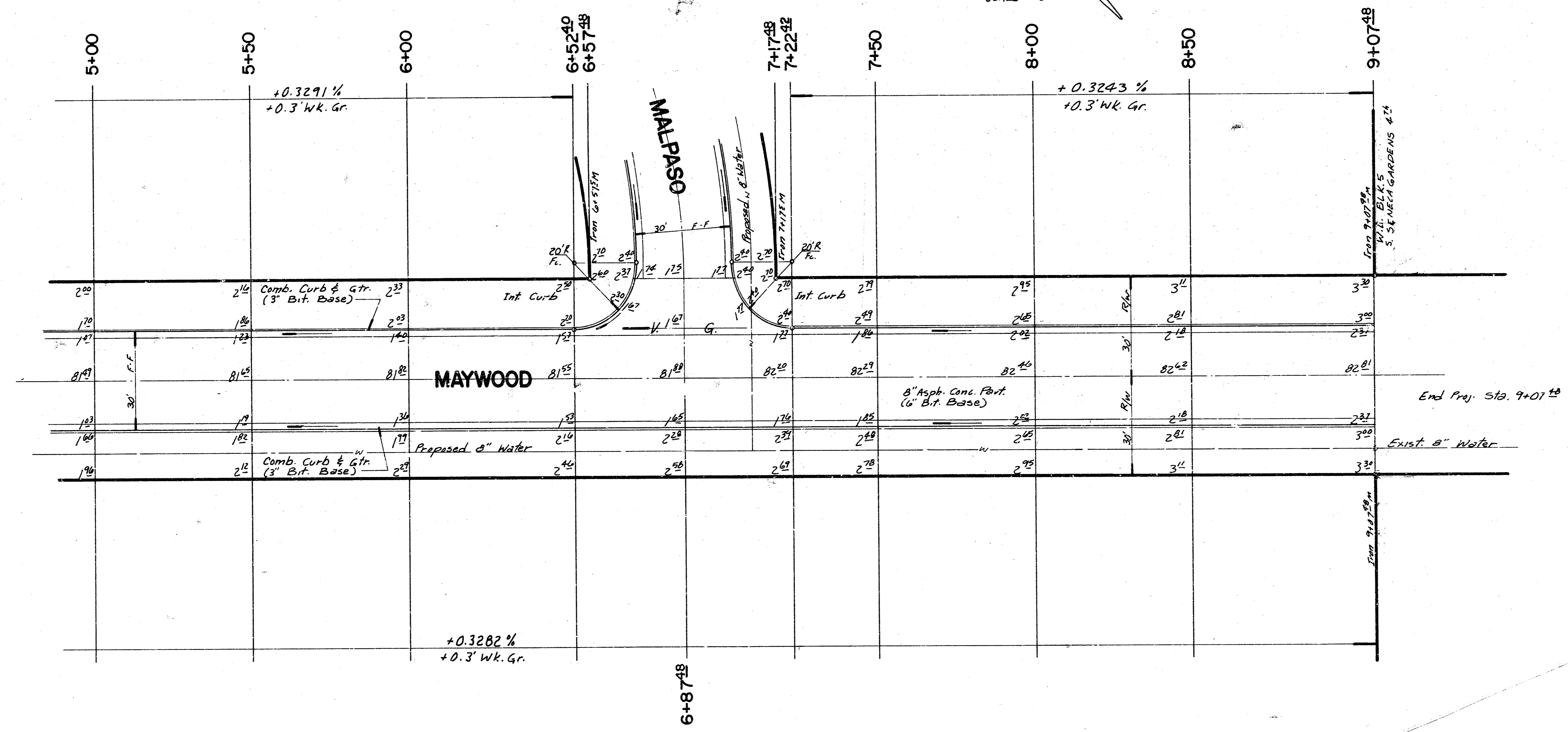
STA.	ARC	8" DIA.	6" DIA.	4" DIA.	3" DIA.
1+70.33 PC					05:00:00
2+00	29.27'	20.76'	31.75'	38:00:20"	3:06:20"
2+25	25'	22.86'	27.12'	2:39:10"	5:45:30"
2+50	25'	22.86'	27.12'	2:39:09"	8:24:39"
2+75	18'	16.46'	19.53'	1:54:35"	10:19:19"
2+93	25'	22.86'	27.12'	2:39:10"	12:58:28"
3+18	25'	22.86'	27.12'	2:39:09"	15:37:37"
3+45	27'	24.67'	29.27'	2:51:53"	18:29:25"
3+70	25'	22.86'	27.12'	2:39:10"	21:20:35"
3+84.24 PT	14.67'	13.42'	15.92'	1:33:28"	23:42:00"

Defl. = 0.36627 Min. ft.

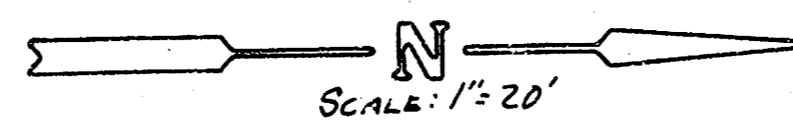
B is E Maywood.



SCALE: 1"=20'



B. M. = 81.69 ~ R.R. Spike SE-Cor. PP NW Cor. 55th St. S. & Handley.



PI
50' V.C.
EI = 83.20

WEST CURB
Δ 45°08'00" 185.17' 76.95' 145.86' L.C. 142.12'

STA	CHORD	E	Δ
2+93.75	---	---	0°00'00"
3+25	31.02'	34.83'	4°47'57"
3+50	25'	28.08'	8°40'01"
3+75	25'	28.08'	12°32'05"
4+00	20'	28.08'	16°24'09"
4+25	19.63'	17.57'	19°27'44"
4+39.85	4.21'	4.73'	22°34'00"

Defl. = 15.78576 Min./ft.

Install 52' of 17"x19" CMPH
4" End Sections. (End
sections to be sand for
as L.F. Pipe.)

Match Exst. Pavt.

Sta. 0+00 Begin Pavt.

S.

55TH ST.

55TH

0+00 M

0+50 M

1+00 M

1+50 M

2+00 M

2+50 M

2+93.75 PC

3+25 M

3+50 M

3+75 M

4+00 M

4+20 M

4+35.85 M

4+39.85 M

E 15 E Malpasso

+0.8000%
+0.3' Wk. Gr.

+0.8000%
+0.3' Wk. Gr.

PI
50' V.C.
EI = 83.20

EAST CURB
Δ 45°08'00" 185.17' 76.95' 145.86' L.C. 142.12'

STA	CHORD	E	Δ
2+93.75	---	---	0°00'00"
3+25	31.02'	27.14'	4°47'57"
3+50	25'	21.88'	8°40'01"
3+75	25'	21.88'	12°32'05"
4+00	20'	21.88'	16°24'09"
4+20	20'	17.51'	19°27'44"
4+33.67	13.67'	11.97'	22°34'00"
4+39.85	6.17'	6.40'	22°34'00"

Defl. = 15.78576 Min./ft.

MALPASO
N.L. 55TH ST. & 10 S. L. MAYWOOD
472 76 215 80822000 000001

12