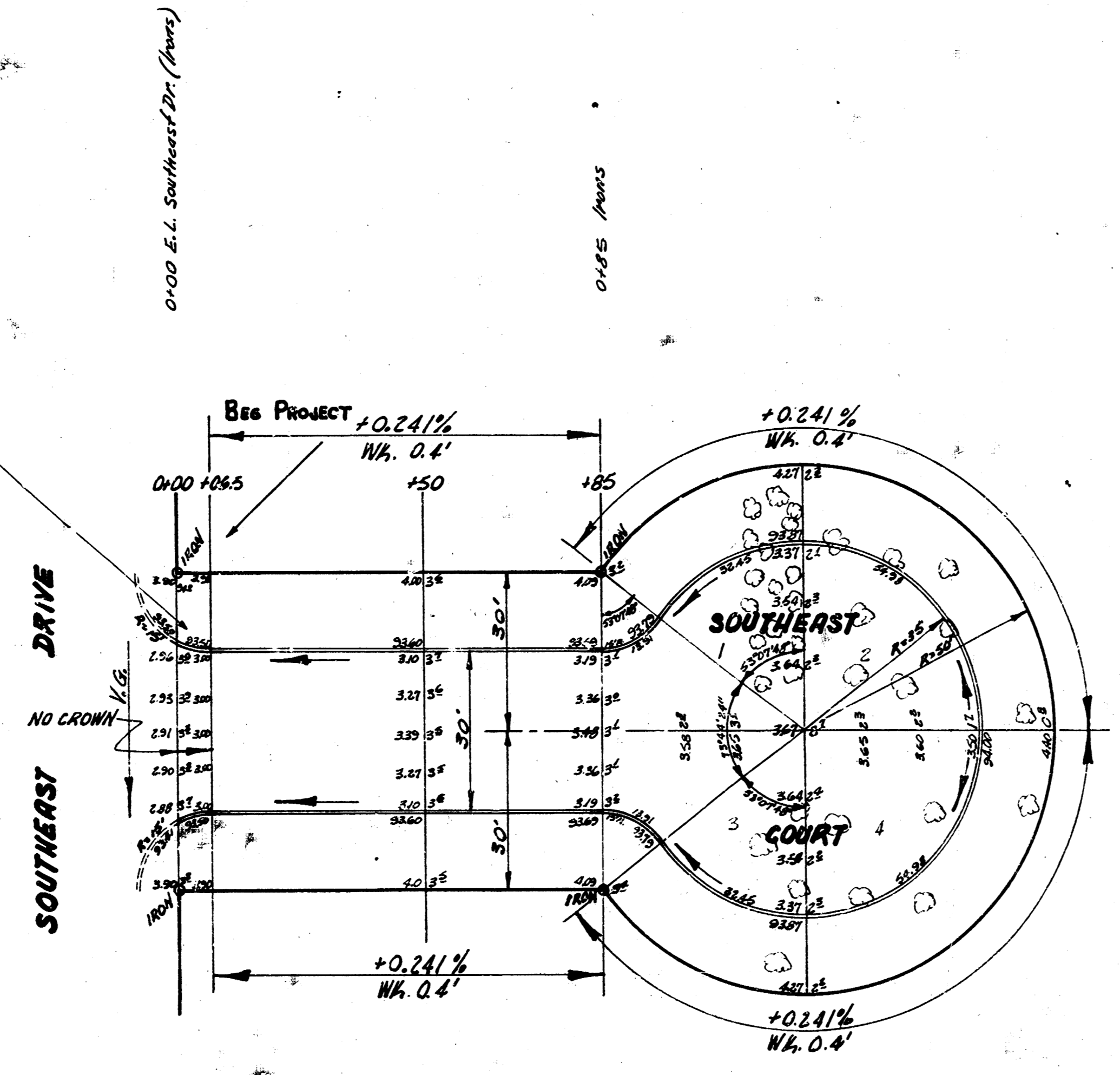


B.M. 98.67 "x" on Top of Ctr. Outfall Str. 30' S. & 65' West of N.W. Cor. Jennings Rd.

Chaining E. on S. R.

**NOTE**  
 STAYE CONSTRUCTION ON THE PROJECT AT STA 0+06.5.  
 STA 0+00 TO STA 0+06.5 TO BE BUILT WITH RETURN  
 OF SOUTHWEST BLVD. PLAN NO. C13-160.



**SOUTHWEST COURT TREES**  
 Distances are From Station Point

Tree #	Tree Size	Tree #	Tree Size
1	4" Elm 18'	12	12" C'wood 16'
2	4" Elm 15'	13	6" C'wood 32'
3	2" Elm 16'	14	6" C'wood 30'
4	2" Elm 16'	15	3-5" Elm 31'
5	4" Elm 15'	16	3-5" Elm 34'
6	4" Elm 15'	17	3-5" Elm 34'
7	4" Elm 15'	18	3-5" Elm 34'
8	4" Elm 15'	19	3-5" Elm 34'
9	4" Elm 15'	20	3-5" Elm 34'
10	4" Elm 15'	21	3-5" Elm 34'
11	4" Elm 15'	22	3-5" Elm 34'
12	4" Elm 15'	23	3-5" Elm 34'
13	4" Elm 15'	24	3-5" Elm 34'
14	4" Elm 15'	25	3-5" Elm 34'
15	4" Elm 15'	26	3-5" Elm 34'
16	4" Elm 15'	27	3-5" Elm 34'
17	4" Elm 15'	28	3-5" Elm 34'
18	4" Elm 15'	29	3-5" Elm 34'
19	4" Elm 15'	30	3-5" Elm 34'
20	4" Elm 15'	31	3-5" Elm 34'
21	4" Elm 15'	32	3-5" Elm 34'
22	4" Elm 15'	33	3-5" Elm 34'
23	4" Elm 15'	34	3-5" Elm 34'
24	4" Elm 15'	35	3-5" Elm 34'
25	4" Elm 15'	36	3-5" Elm 34'
26	4" Elm 15'	37	3-5" Elm 34'
27	4" Elm 15'	38	3-5" Elm 34'
28	4" Elm 15'	39	3-5" Elm 34'
29	4" Elm 15'	40	3-5" Elm 34'
30	4" Elm 15'	41	3-5" Elm 34'
31	4" Elm 15'	42	3-5" Elm 34'
32	4" Elm 15'	43	3-5" Elm 34'
33	4" Elm 15'	44	3-5" Elm 34'
34	4" Elm 15'	45	3-5" Elm 34'
35	4" Elm 15'	46	3-5" Elm 34'
36	4" Elm 15'	47	3-5" Elm 34'
37	4" Elm 15'	48	3-5" Elm 34'
38	4" Elm 15'	49	3-5" Elm 34'
39	4" Elm 15'	50	3-5" Elm 34'
40	4" Elm 15'	51	3-5" Elm 34'
41	4" Elm 15'	52	3-5" Elm 34'
42	4" Elm 15'	53	3-5" Elm 34'
43	4" Elm 15'	54	3-5" Elm 34'
44	4" Elm 15'	55	3-5" Elm 34'
45	4" Elm 15'	56	3-5" Elm 34'
46	4" Elm 15'	57	3-5" Elm 34'
47	4" Elm 15'	58	3-5" Elm 34'
48	4" Elm 15'	59	3-5" Elm 34'
49	4" Elm 15'	60	3-5" Elm 34'
50	4" Elm 15'	61	3-5" Elm 34'
51	4" Elm 15'	62	3-5" Elm 34'
52	4" Elm 15'	63	3-5" Elm 34'
53	4" Elm 15'	64	3-5" Elm 34'
54	4" Elm 15'	65	3-5" Elm 34'
55	4" Elm 15'	66	3-5" Elm 34'
56	4" Elm 15'	67	3-5" Elm 34'
57	4" Elm 15'	68	3-5" Elm 34'
58	4" Elm 15'	69	3-5" Elm 34'
59	4" Elm 15'	70	3-5" Elm 34'
60	4" Elm 15'	71	3-5" Elm 34'
61	4" Elm 15'	72	3-5" Elm 34'
62	4" Elm 15'	73	3-5" Elm 34'
63	4" Elm 15'	74	3-5" Elm 34'
64	4" Elm 15'	75	3-5" Elm 34'
65	4" Elm 15'	76	3-5" Elm 34'
66	4" Elm 15'	77	3-5" Elm 34'
67	4" Elm 15'	78	3-5" Elm 34'
68	4" Elm 15'	79	3-5" Elm 34'
69	4" Elm 15'	80	3-5" Elm 34'
70	4" Elm 15'	81	3-5" Elm 34'
71	4" Elm 15'	82	3-5" Elm 34'
72	4" Elm 15'	83	3-5" Elm 34'
73	4" Elm 15'	84	3-5" Elm 34'
74	4" Elm 15'	85	3-5" Elm 34'
75	4" Elm 15'	86	3-5" Elm 34'
76	4" Elm 15'	87	3-5" Elm 34'
77	4" Elm 15'	88	3-5" Elm 34'
78	4" Elm 15'	89	3-5" Elm 34'
79	4" Elm 15'	90	3-5" Elm 34'
80	4" Elm 15'	91	3-5" Elm 34'
81	4" Elm 15'	92	3-5" Elm 34'
82	4" Elm 15'	93	3-5" Elm 34'
83	4" Elm 15'	94	3-5" Elm 34'
84	4" Elm 15'	95	3-5" Elm 34'
85	4" Elm 15'	96	3-5" Elm 34'
86	4" Elm 15'	97	3-5" Elm 34'
87	4" Elm 15'	98	3-5" Elm 34'
88	4" Elm 15'	99	3-5" Elm 34'
89	4" Elm 15'	100	3-5" Elm 34'

SOUTHWEST COURT  
 30' CONC. & CB.  
 CITY OF WICHITA, KANS.  
 B.E. SMITH CITY ENGINEER  
 JULY, 1954 PROJ. NO. C13-159

