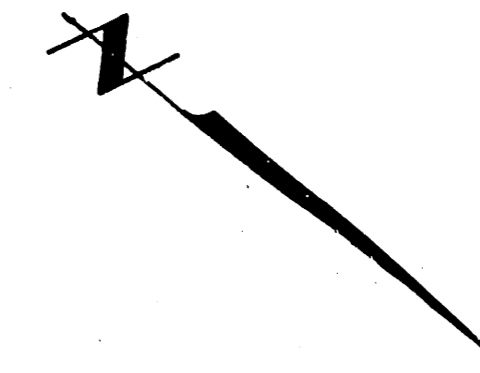


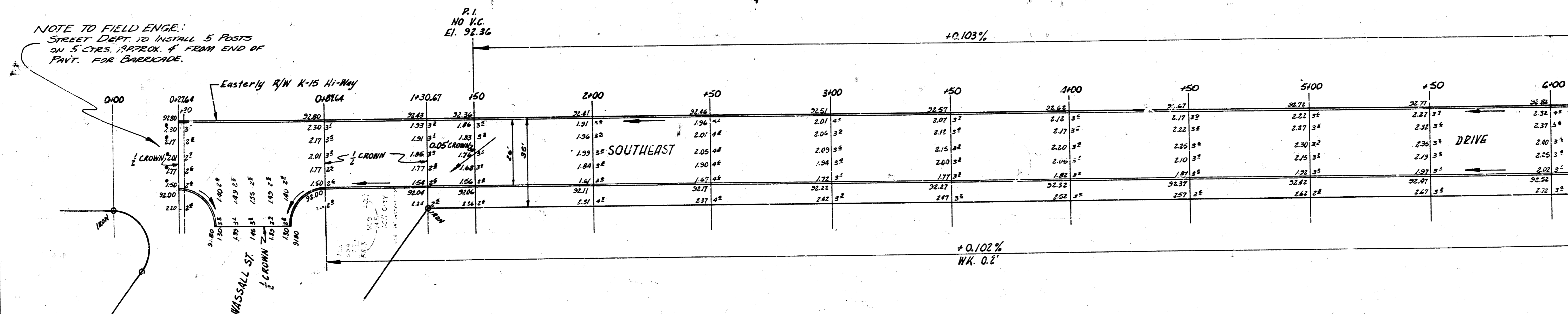
B.M. 96.79 Step Bench N.S. H.L. Pole 1st Pole W. Canal S.S. Canal
 B.M. 98.67 "x" on Top & Ctr. Outfall Structure 30' South & 65' West
 of N.W. Cor. Jennings Addn.

Chain N.W. on N.E. R.

H. W. GAV
 Prop. City
 1177.0 Cu.Yb. 123.8 Cu.Yb.

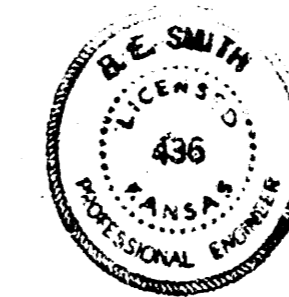


NOTE TO FIELD ENGRS:
 STREET DEPT. TO INSTALL 5 POSTS
 ON 5 CYES. APPROX. 4' FROM END OF
 PAVT. FOR BARCADE.



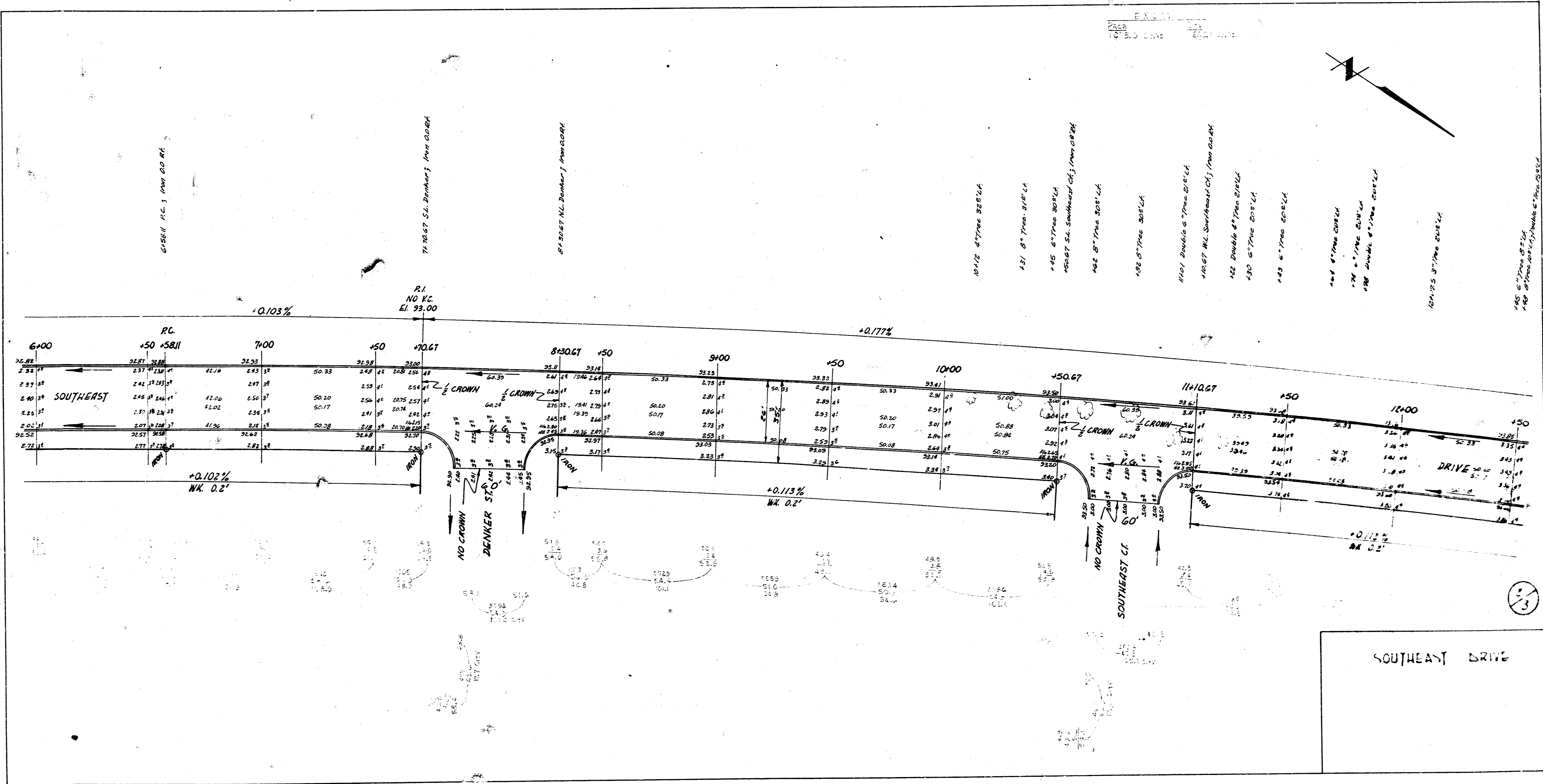
Vertical Curves
 1. 100' Length
 2. 100' Length
 3. 100' Length

TOTAL FILL		TOTAL EXCAV	
PROP.	CITY	PROP.	CITY
18.5	7.4	306.0	204.2
+103.1% 15.7 Cu.Yb.	+103.1% 9.7 Cu.Yb.	+103.1% 2311.0 Cu.Yb.	+103.1% 221.2 Cu.Yb.



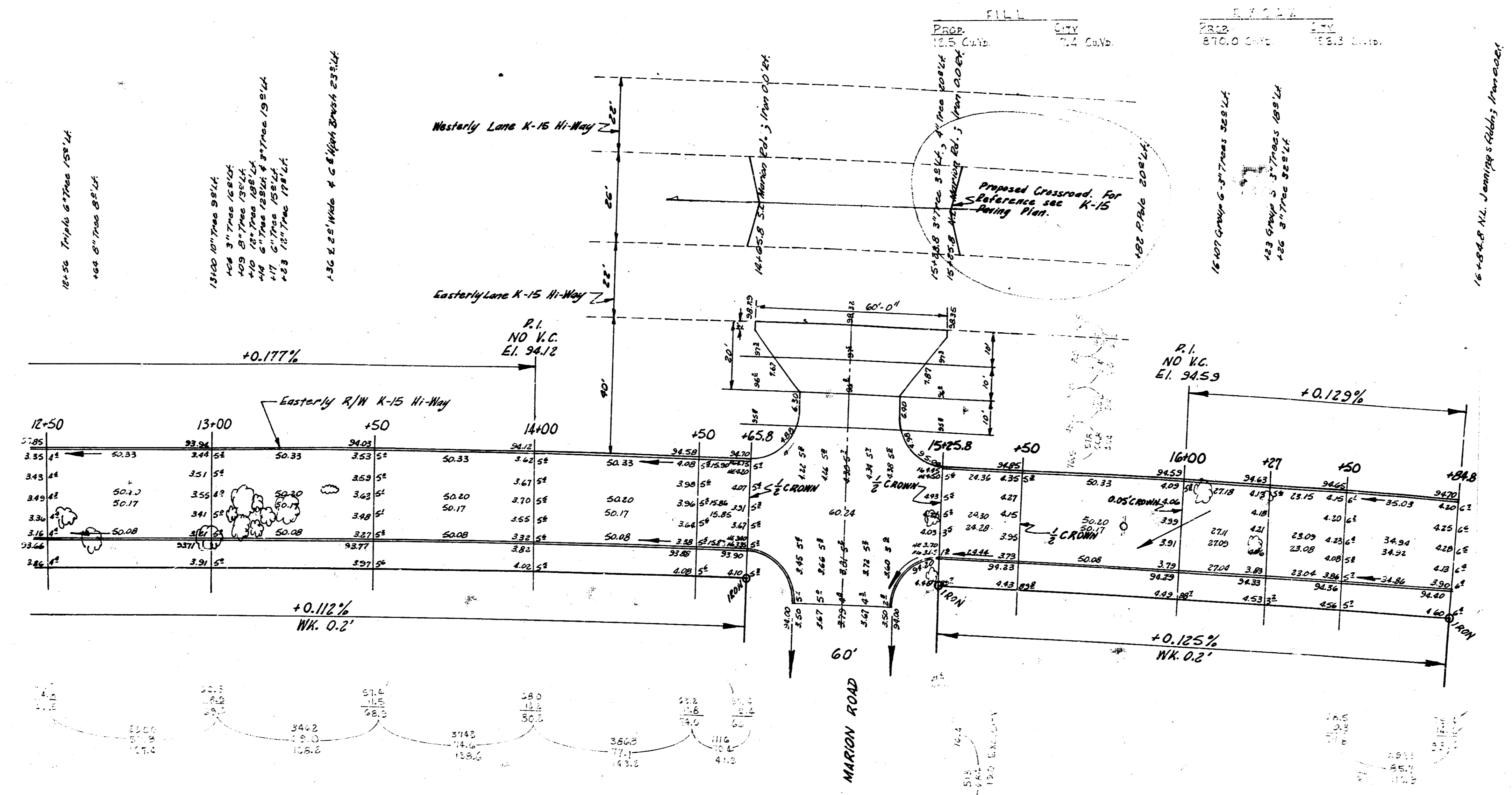
SOUTHEAST DRIVE
 S.L. WASSALL - N.L. JENNINGS ADDN
 2' CONC. & CB.
 CITY OF WICHITA, KANS.
 B. E. SMITH CITY ENGINEER
 JUNE, 1954 PROJ. NO. C-13-160

1/3



CURVE DATA FROM STA 6+584.1 TO STA 16+84.8
STATIONING ON N.E. R. R. R=5261.56 Δ=11°10'48"

STA.	Chord Length	Chord Length	Defl. Angle	Total Defl.
	6' Offset N. Ch.	6' Offset E. Ch.		
6+584.1				
7+00	22.21	41.91	0° 13' 41"	0° 13' 41"
7+50	50.38	50.03	0° 16' 20"	0° 30' 01"
7+70.67	56.83	50.68	0° 16' 45"	0° 35' 46"
8+00	61.42	60.03	0° 18' 36"	0° 54' 22"
8+50	73.42	73.34	0° 20' 18"	1° 02' 41"
9+00	80.38	80.02	0° 21' 20"	1° 19' 01"
9+50	90.38	90.02	0° 21' 20"	1° 35' 21"
10+00	90.38	90.02	0° 16' 20"	1° 51' 41"
10+50.67	91.06	90.69	0° 16' 33"	1° 58' 14"
11+00	90.46	80.03	0° 19' 36"	2° 07' 50"
11+50	35.63	35.35	0° 12' 51"	2° 20' 41"
12+00	50.38	50.03	0° 12' 51"	2° 33' 32"
12+50	50.38	50.03	0° 16' 20"	2° 49' 52"
13+00	50.38	50.02	0° 16' 20"	3° 06' 12"
13+50	50.38	50.02	0° 16' 20"	3° 22' 32"
14+00	50.38	50.02	0° 16' 20"	3° 38' 52"
14+50	50.38	50.02	0° 16' 20"	3° 55' 12"
14+58.8	15.32	15.31	0° 05' 10"	4° 00' 22"
15+00	61.46	60.03	0° 19' 36"	4° 19' 58"
15+50	24.39	24.21	0° 07' 50"	4° 27' 48"
16+00	50.38	50.02	0° 16' 20"	4° 44' 08"
16+50	37.21	37.21	0° 08' 45"	4° 52' 53"
16+84.8	23.40	23.41	0° 07' 51"	5° 00' 44"
16+84.8	35.07	34.82	0° 11' 22"	5° 12' 06"



SOUTHEAST DRIVE