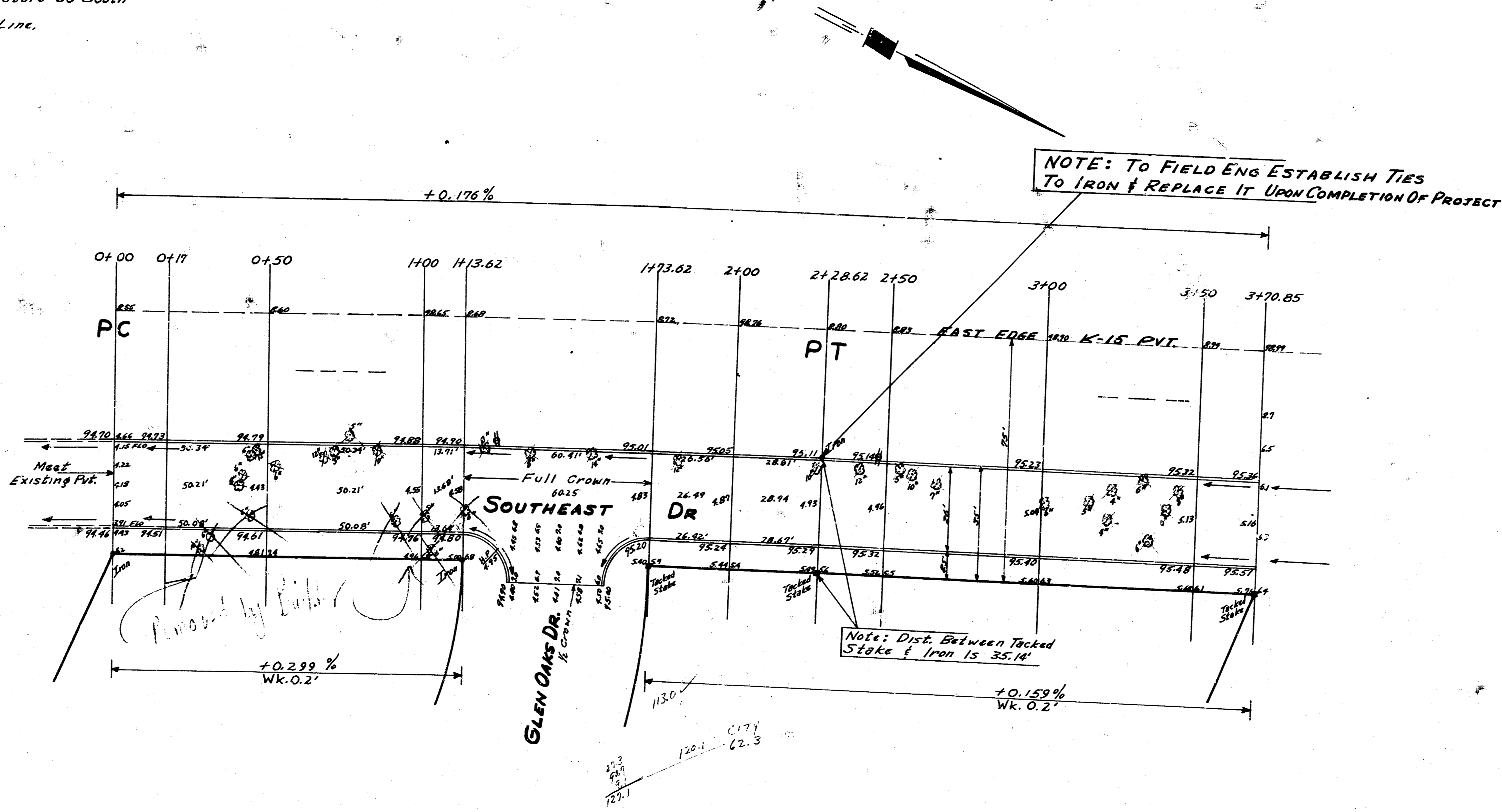


B.M. 98.67 On Top of ctn. of Outfall Structure 30' South
 of 65' W of N.W. Cor. Jennings Add
 Stationing & Base Line East Prop. Line.

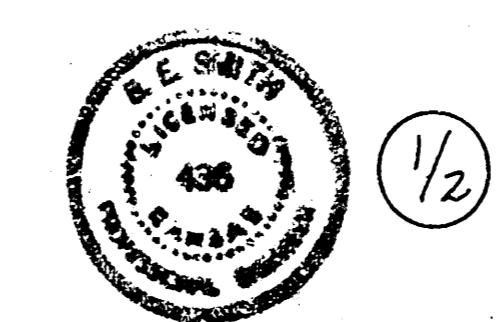


Curve Data Based On E.P.L. $\Delta = 2^\circ 35' 6''$ $R = 5067.25$

Station	Chord 6' OFF W. Ch.	Chord 6' OFF E. Ch.	Dep. L.	Total Dep.
0+00	PC			
0+30	50.40	50.02	16.58"	16.58"
1+00	50.40	50.02	16.58"	33.16"
1+13.62	13.73	13.63	4.37"	37.53"
1+43.62	60.48	60.03	20.21"	57.74"
2+00	26.39	26.39	8.57"	66.31"
2+28.62	28.85	28.63	9.43"	75.74"

PROP 883.6
 +10% 88.9
 977.5 CU. YDS CUT

CITY 2262
 +10% 226.2
 278.8 CU. YDS CUT



SOUTHEAST DR.
 N.L. JENNINGS Add To N.L. MURPHY Add
 26' CONC & CO.
 CITY OF WICHITA KAN.
 B.E. SMITH CITY ENGINEER
 OCT. 1955 Proj. No. C1566