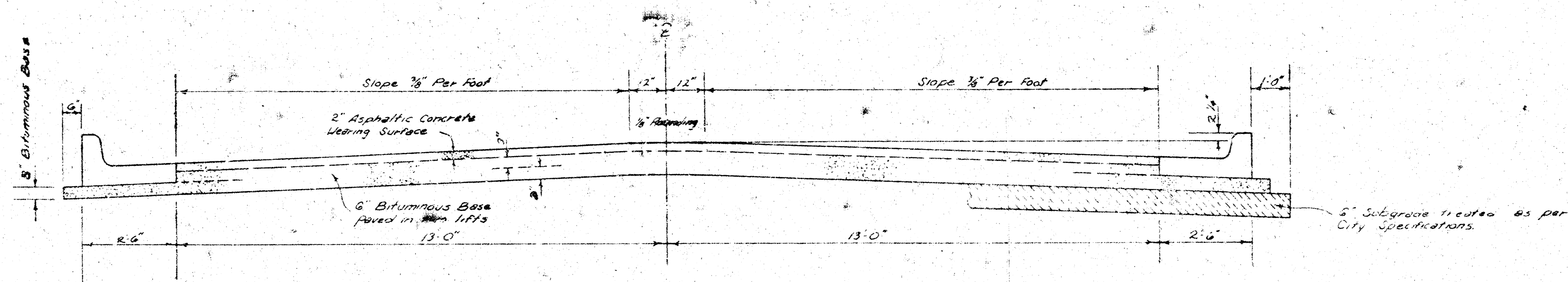


SOUTHGATE ST.
E. L. RICHMOND AVE.
TO & INCLUDING CUL-DE-SAC



TYPICAL SECTION

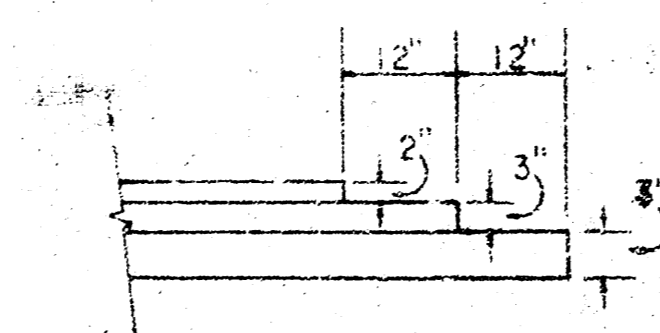
3' ASPHALTIC CONCRETE PAVEMENT WITH BITUMINOUS BASE

The AC pavement between the Comb Curb & Gutter shall be paid as Sec. 103. B AC Pavement (6 Bituminous Base). The Bituminous Base under the Comb. Curb & Gutter shall be paid as Sec. 103. 3 Bituminous Base.

A TACK COAT OF EMULSIFIED ASPHALT (SS-IH) SHALL BE APPLIED AT AN APPROXIMATE RATE OF 0.05 GALLONS PER SQ YD BETWEEN LIFTS OF ASPHALTIC MATERIALS WHEN ORDERED BY THE ENGINEER. TACK COAT WILL NOT BE PAID FOR DIRECTLY AND SHALL BE CONSIDERED AS SUBSIDIARY TO PRICE BID FOR ASPHALTIC PAVEMENT.

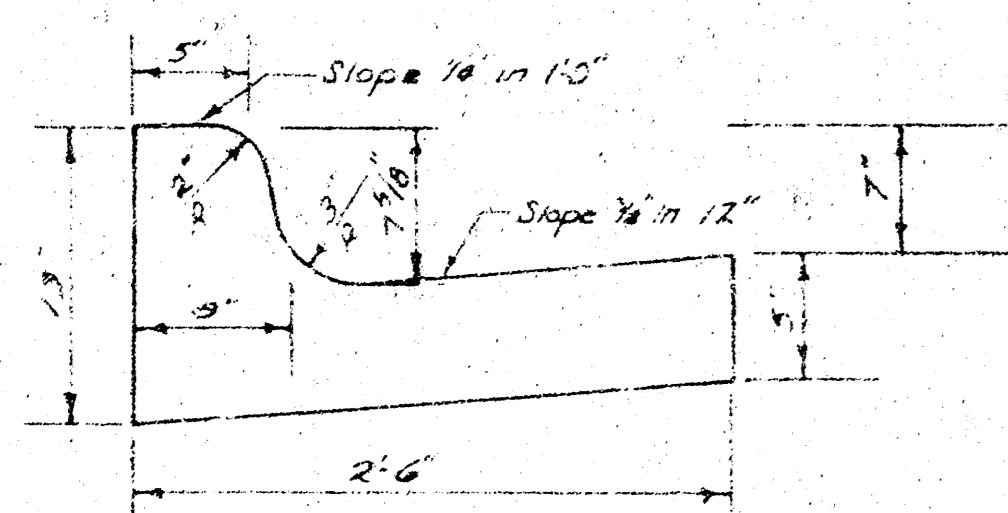
BITUMINOUS BASE AND ASPHALTIC CONCRETE WEARING SURFACE SHALL BE PLACED WITH A LAYDOWN MACHINE, HAVING AUTOMATIC ELECTRONIC CONTROLS FOR CROWN AND GRADE. CONSTRUCTION JOINTS IN EACH LIFT SHALL BE STAGGERED A MINIMUM DISTANCE OF 1' WITH JOINTS IN PRECEDING LIFTS AND SUCH THAT A JOINT WILL BE CONSTRUCTED ON THE PAVEMENT CENTERLINE IN THE TOP LIFT.

DETAIL OF TRANSVERSE CONSTRUCTION JOINTS

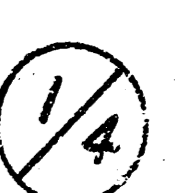
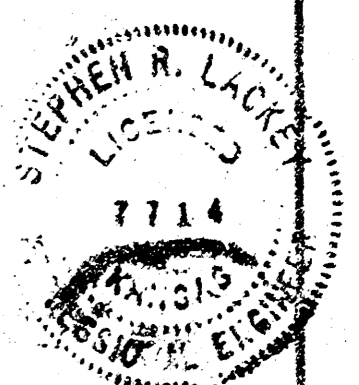
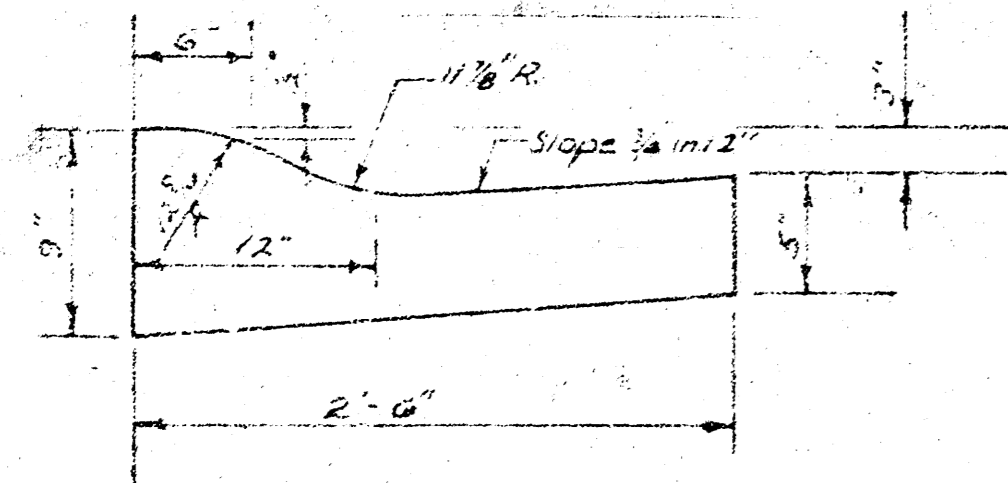


TRANSVERSE CONSTRUCTION JOINTS SHALL BE CONSTRUCTED IN FLEXIBLE BASE PAVEMENTS AT LOCATIONS WHERE PAVEMENT TEMPORARILY ENDS TO FACILITATE FUTURE PAVEMENT CONSTRUCTION AS SHOWN BY DETAIL. THE COST OF CONSTRUCTING THE TRANSVERSE CONSTRUCTION JOINTS SHALL NOT BE MEASURED OR PAID FOR DIRECTLY BUT SHALL BE INCLUDED IN THE BID PRICE FOR SQUARE YARDS OF ASPHALTIC CONCRETE PAVEMENT.

COMBINED CURB & GUTTER



ROLL TYPE CURB & GUTTER

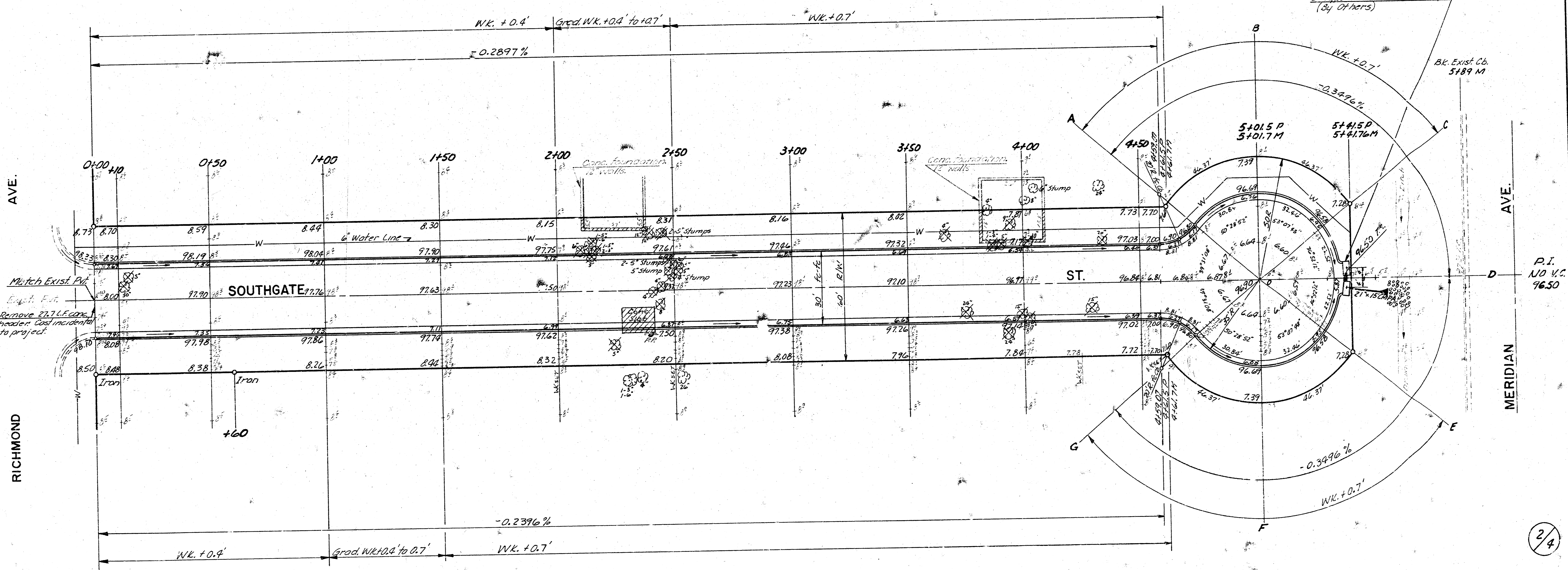


CITY OF WICHITA, KANSAS
DEPARTMENT OF PUBLIC WORKS — ENGINEERING
R. W. LINN CITY ENGINEER
DATE
PROJ. NO. 472 76 245 80840 000 000 001

B.M. 98.55 "d" Top N. Cb. Sunnybrook S.W. of W.L. Richmond
 B.M. 98.80 R.R. Spk. N.W. 1/4. P.P. S.E. Cor. Richmond & Southgate

Scale: 1" = 20'

Survey O.C.C.
 Plan O.C.C.
 Exc.
 Chief Eng.



NOTE: No more than 8-20' Drives to be constructed on this project.

SUB-GRADE
 TYPE OF SUB-GRADE TREATMENT SHALL BE DETERMINED BY THE FIELD ENGINEER. SUB-GRADE TREATMENT MAY CONSIST OF LIME TREATMENT, CEMENT TREATMENT, SUB-GRADE MODIFICATION, OR ANY COMBINATION OF THESE.

Note: Trees to be removed are marked thus . Except that any tree marked for removal, which in the opinion of the Engineer, can be saved, shall be spared.

Earthwork
Excavation
 1706.7 C.Y.
 +10% 170.7
 Total 1877.4 C.Y.

Total Manipulation 2535.0 S.Y.

SOUTHGATE ST.
 E.L. RICHMOND AVE.
 TO & INCLUDING CUL-DE-SAC
 CITY OF WICHITA, KANSAS
 R.W. LINN CITY ENGINEER
 DATE

PROJ. NO. 472 76 245 80840 000 000 001

2/4

FILMED FROM THE BEST AVAILABLE COPY