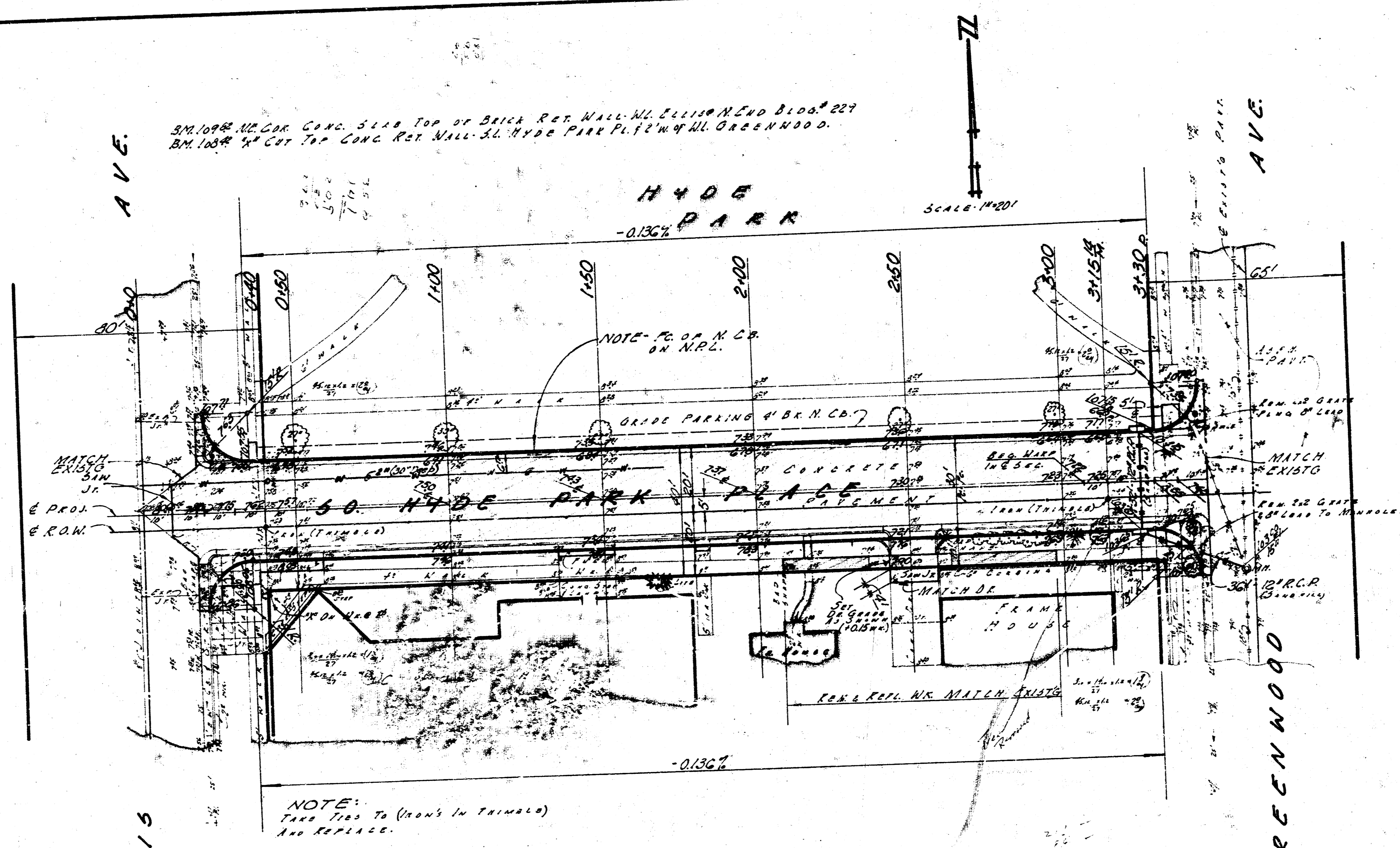


SHOW CHANGE IN 1/2" HO  
 EX. CHANGING



NOTE - INCIDENTAL DRAINAGE  
 TO BE INSTALLED BY  
 "OTHERS"  
 SALVAGE 2x6 GRATE, CASTINGS  
 AND LID. TAKE TO CITY MATERIAL  
 YARD.

NOTE:  
 TAKE TIES TO (ROAD IN TOWN)  
 AND REPLACE.

EARTHWORK QUANTITIES

DESCRIPTION	QUANTITY
Excavation	1478.54
Fill (10%)	718.12
Fill (20%)	1436.24
Fill (30%)	2154.36
Fill (40%)	2872.48
Fill (50%)	3590.60
Fill (60%)	4308.72
Fill (70%)	5026.84
Fill (80%)	5744.96
Fill (90%)	6463.08
Fill (100%)	7181.20
<b>TOTAL</b>	<b>41872.00</b>

**50. HYDE PARK PL.**  
 50 ELLIS ST. TO W. GREENWOOD AVE  
 30" CONCRETE AND CURB  
 RE-CONSTRUCTION  
 CITY OF WICHITA, KANS.  
 B.E. SMITH — CITY ENGINEER  
 DATE: March 1967 Proj. No. C16-81



SMT. 1/2