

PAVING AND DRAINAGE IMPROVEMENTS

SOUTHVIEW PARK

CITY OF WICHITA, KANSAS

MICHAEL E. LINDEBAK, CITY ENGINEER

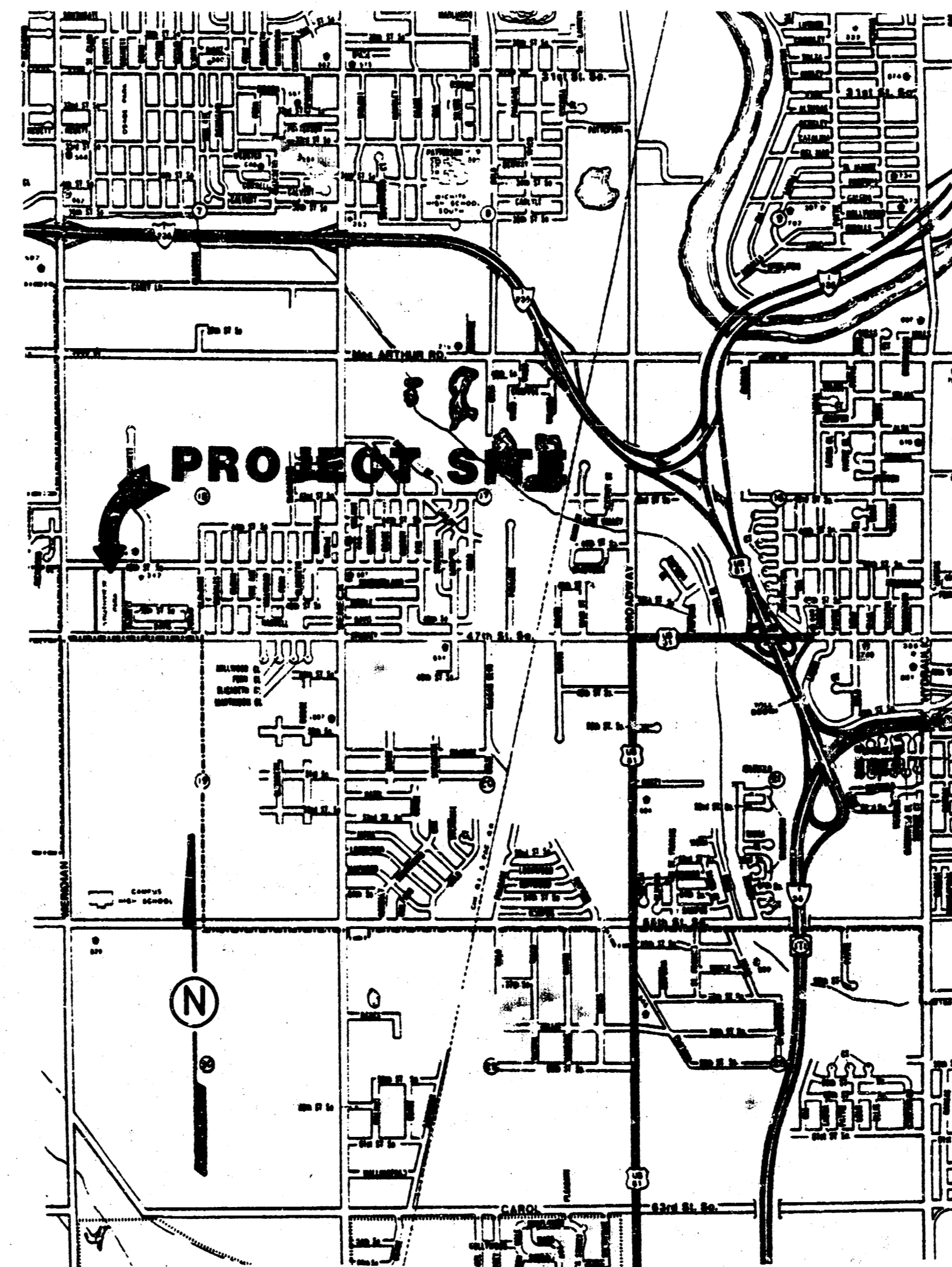
INDEX CODE 608265

INDEX

TITLE SHEET	SHEET NO. 1
TYPICAL SECTIONS & MISC. DETAILS	SHEET NO. 2
PAVING & DRAINAGE IMPROVEMENTS	SHEET NO. 3
DETAIL STD. TYPE 1A CURB INLET	SHEET NO. 4
CROSS SECTIONS	SHEET NO. 5
QUARTER SECTION MAP	SHEET NO. 6

GENERAL NOTES:

1. Utility service lines, poles, valve boxes, meters, and etcetera are to be adjusted as necessary by others prior to construction unless the plans specifically call for their adjustment by the contractor or unless the plans specifically identify a utility to be adjusted by its owner during construction. Existing utilities and their location, as shown on the plans, represent the best information obtainable for design. The contractor will be required to work around existing utilities within the right of way which do not conflict with proposed construction.
2. Rubble from the removal of miscellaneous structures and excess excavation which is to be wasted shall be disposed of on sites to be provided by the contractor. These sites shall be approved by the Engineer as to suitability, appearance and site location. Locations that, in the opinion of the Engineer, will leave an unsightly appearance will not be approved.
3. The Contractor shall be responsible for preserving property irons. The contractor will be required to re-establish any property irons which are damaged or destroyed by his construction operations. Such irons shall be re-established by a licensed land surveyor or a licensed professional engineer in accordance with state laws.
4. The Contractor shall determine the depth of the existing 12" water line. If 12" clearance cannot be provided the Park Dept. will see that the water line depth is adjusted.

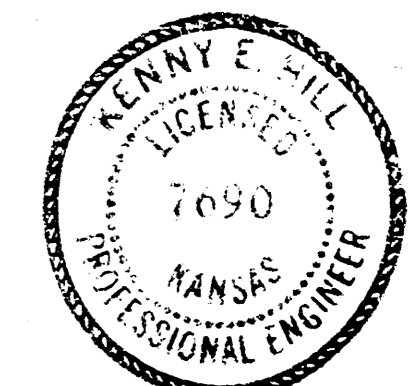


BENCH MARKS

- BM #1 City of Wichita Bench Mark Disc at Meridian & 47th Street, 44' North and 30' East of centerline both. Elev. 91.777
- BM #2 Railroad Spike in Power Pole at Sta. 1+37.03 (49.49' Lt.) Elev. 92.07

OCTOBER 1989

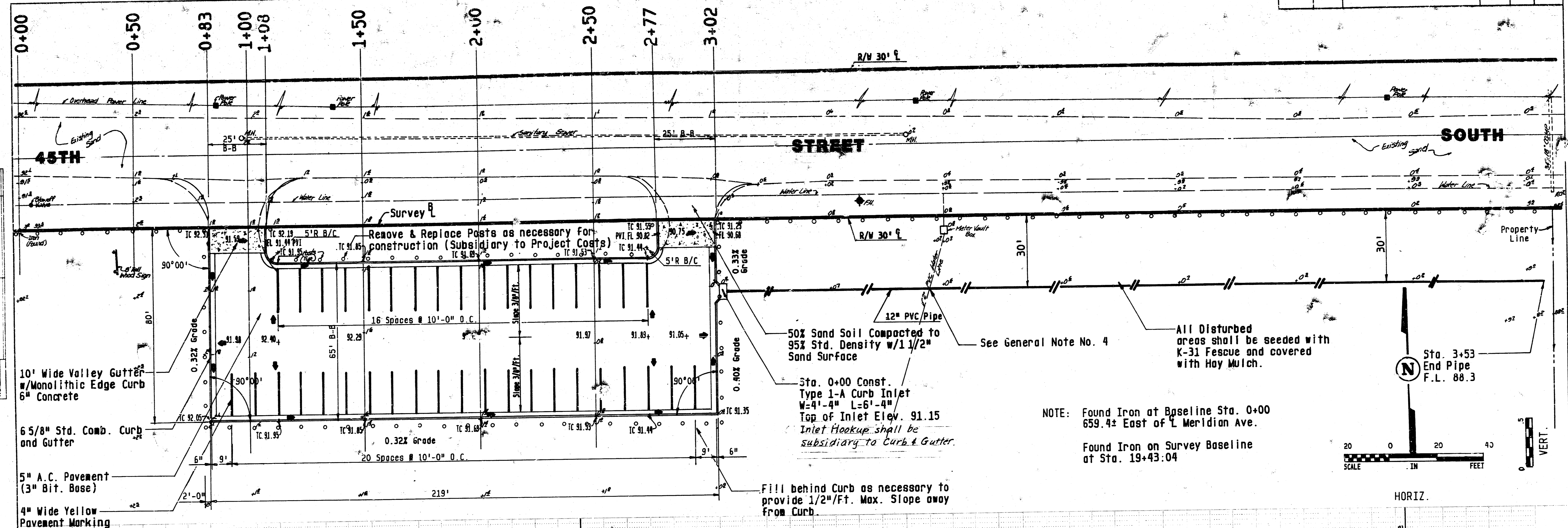
POE & ASSOCIATES OF KANSAS INC.
CONSULTING ENGINEERS
434 N. Oliver, Suite 110 ■ Wichita, KS 67208 ■ 316/685-4114



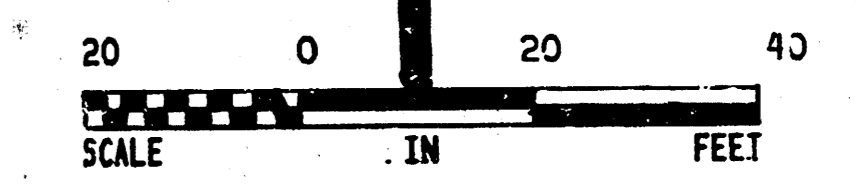
FILMED FROM THE BEST AVAILABLE COPY

PLAN
 SUBMITTED, PLOTTED, OR REVISIONS MADE BY: []
 DATE: []
 NOTE BOOK NO. OF WAY CHECKED: []
 NO. OF WAY CHECKED: []

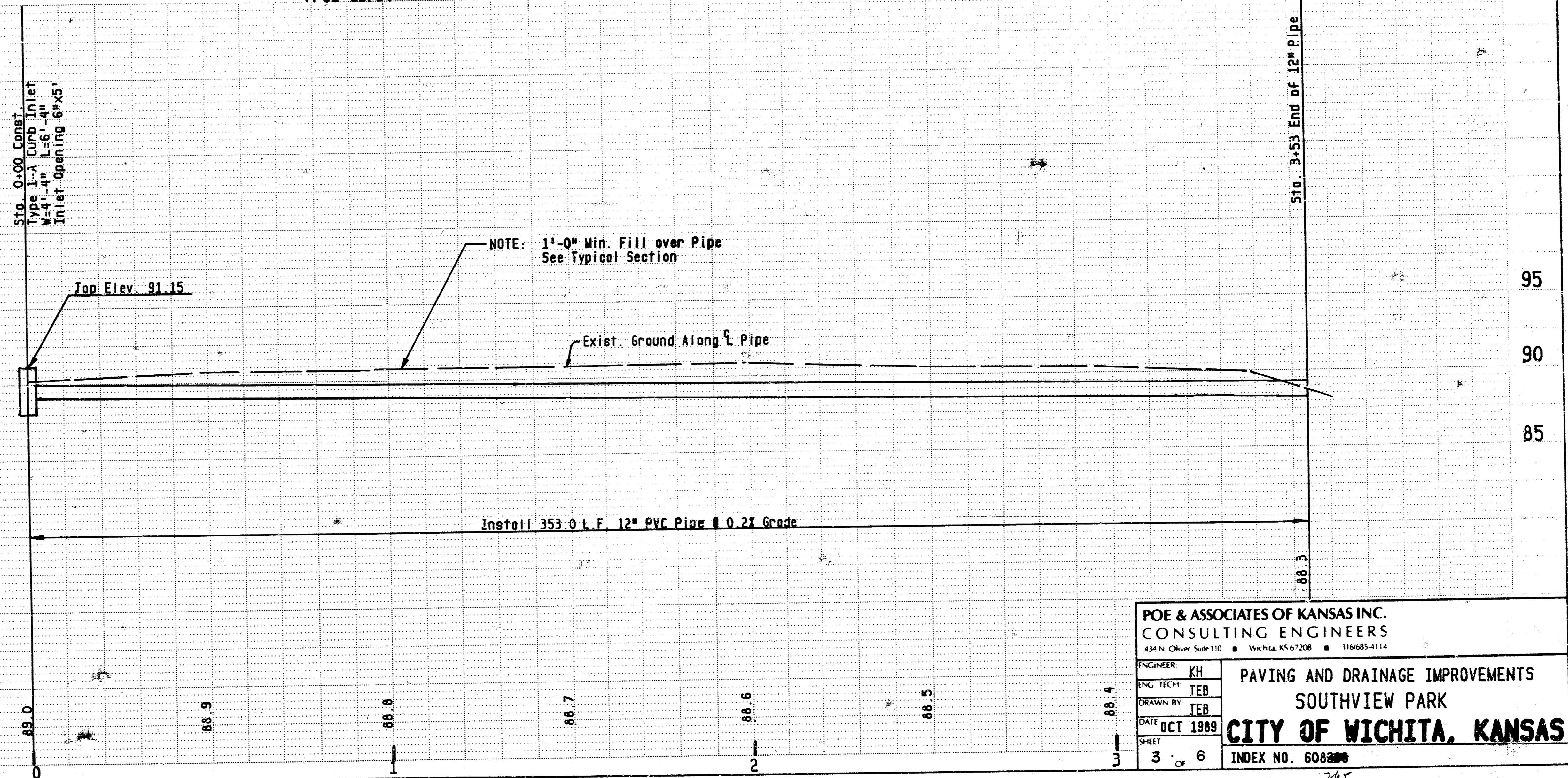
PROFILE
 SUBMITTED, PLOTTED, OR REVISIONS MADE BY: []
 DATE: []
 NOTE BOOK NO. OF WAY CHECKED: []
 NO. OF WAY CHECKED: []



NOTE: Found Iron at Base Line Sta. 0+00
 659.4± East of T. Meridian Ave.
 Found Iron on Survey Baseline
 at Sta. 19+43.04



Sta. 3+53
 End Pipe
 F.L. 88.3

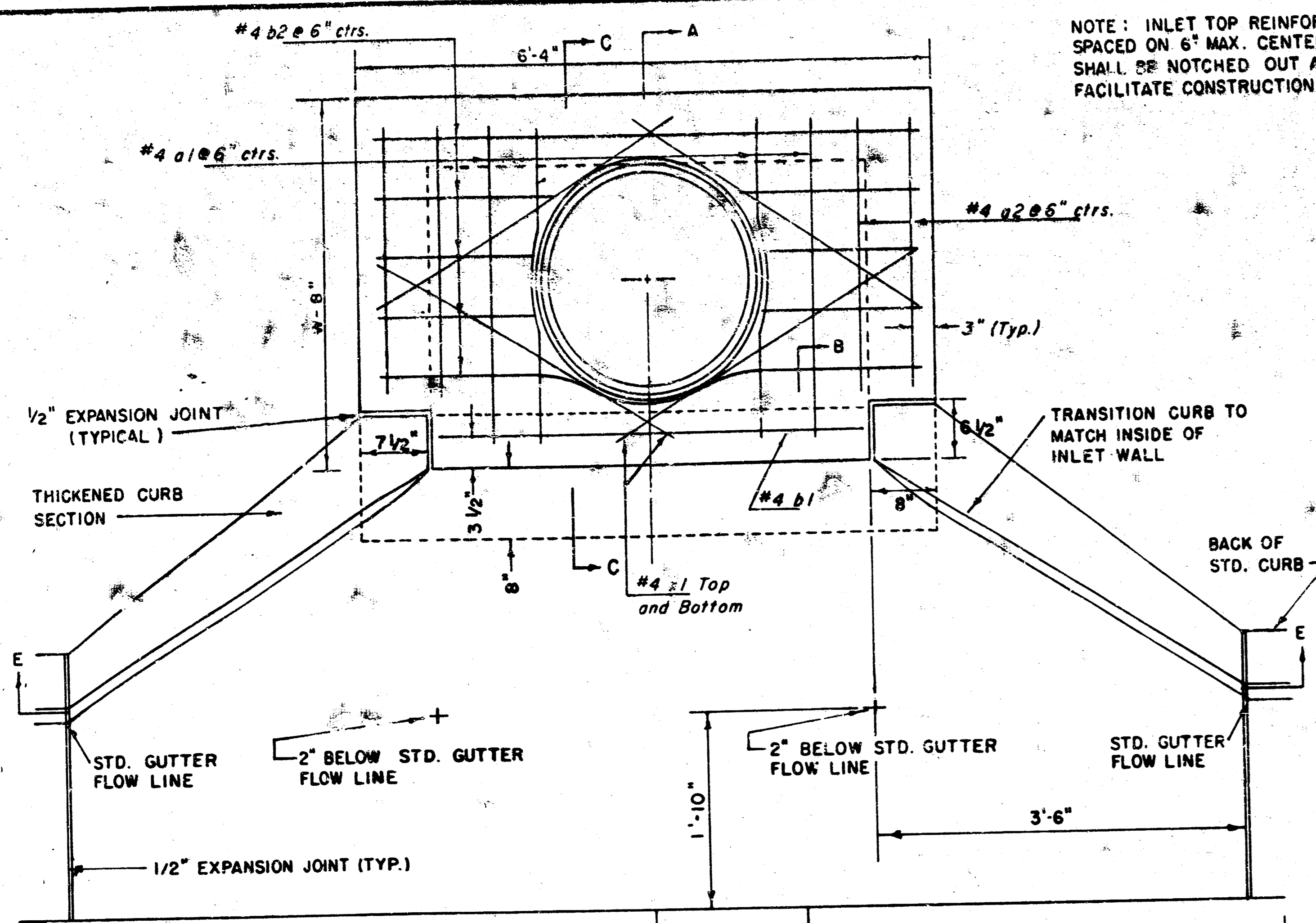


POE & ASSOCIATES OF KANSAS INC.
 CONSULTING ENGINEERS
 434 N. Oliver, Suite 110 • Wichita, KS 67208 • 316-855-4114

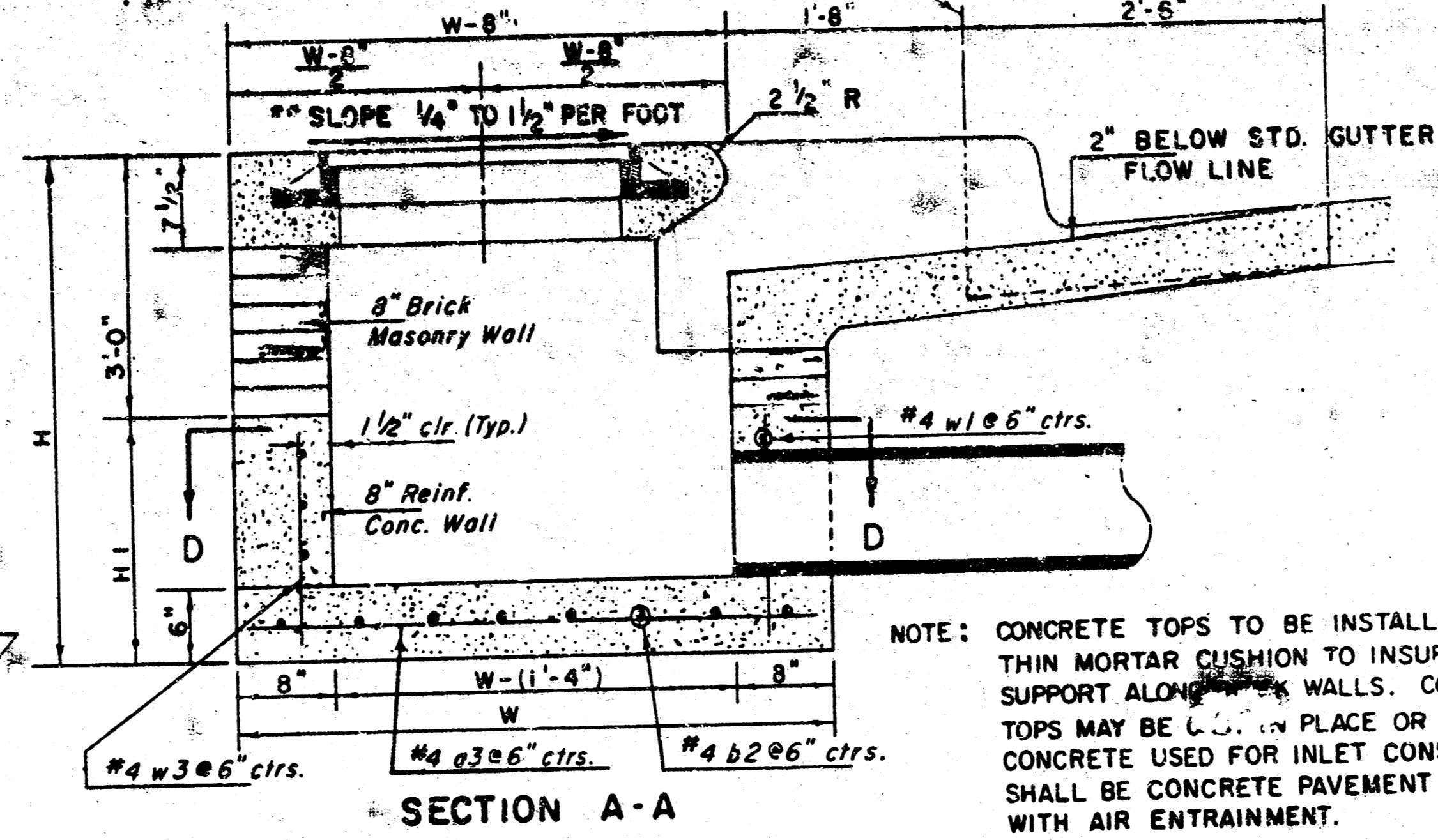
ENGINEER: KH
 ENG. TECH: JEB
 DRAWN BY: JEB
 DATE: OCT 1989
 SHEET: 3 OF 6

PAVING AND DRAINAGE IMPROVEMENTS
SOUTHVIEW PARK
CITY OF WICHITA, KANSAS
 INDEX NO. 608

FILMED FROM THE BEST AVAILABLE COPY



NOTE: INLET TOP REINFORCING SHALL BE SPACED ON 6" MAX. CENTERS. INLET LIDS SHALL BE NOTCHED OUT AS INDICATED TO FACILITATE CONSTRUCTION OF CURB.



SECTION A-A

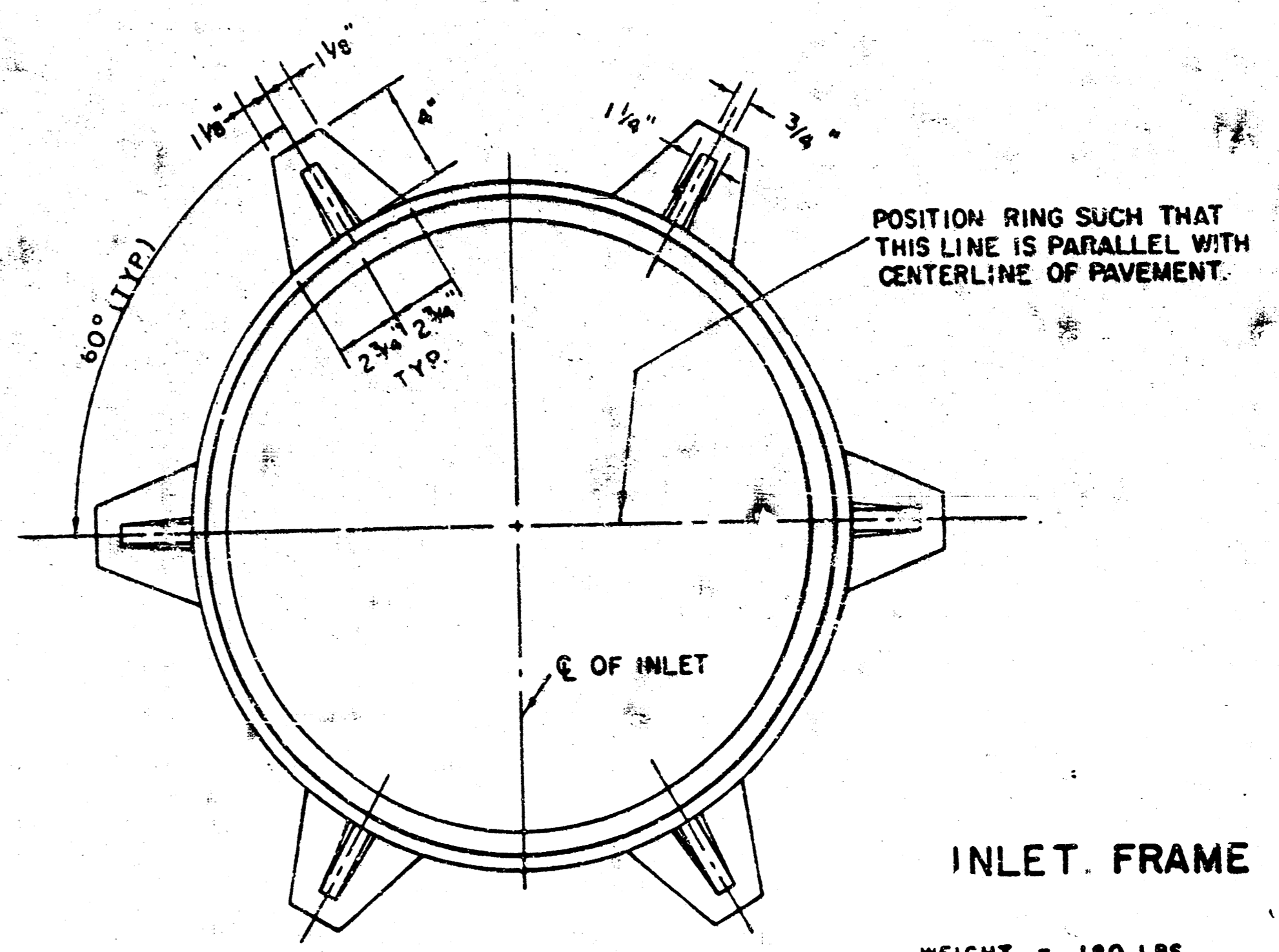
NOTE: CONTRACTOR SHALL HAVE THE OPTION OF CONSTRUCTING 8" BRICK MASONRY WALLS BETWEEN THE CONCRETE INLET BASE AND TOP ON THIS INLET WHEN W = 6'-4" AND H = 7'-0" OR LESS.

ADDITIONAL CURB AND GUTTER CONSTRUCTION NECESSARY TO CONNECT SET-BACK INLET TO PAVEMENT WILL BE PAID FOR AT THE UNIT PRICE BID FOR EACH INLET HOOKUP.

INLET INVERT SHALL BE SHAPED WITH 8 SACK SAND MIX CONCRETE TO CREATE FLOW CHANNELS AND TO INCREASE HYDRAULIC EFFICIENCY SUCH THAT THE INLET WILL BE SELF-CLEANING BETWEEN ALL INLET AND/OR OUTLET PIPES.

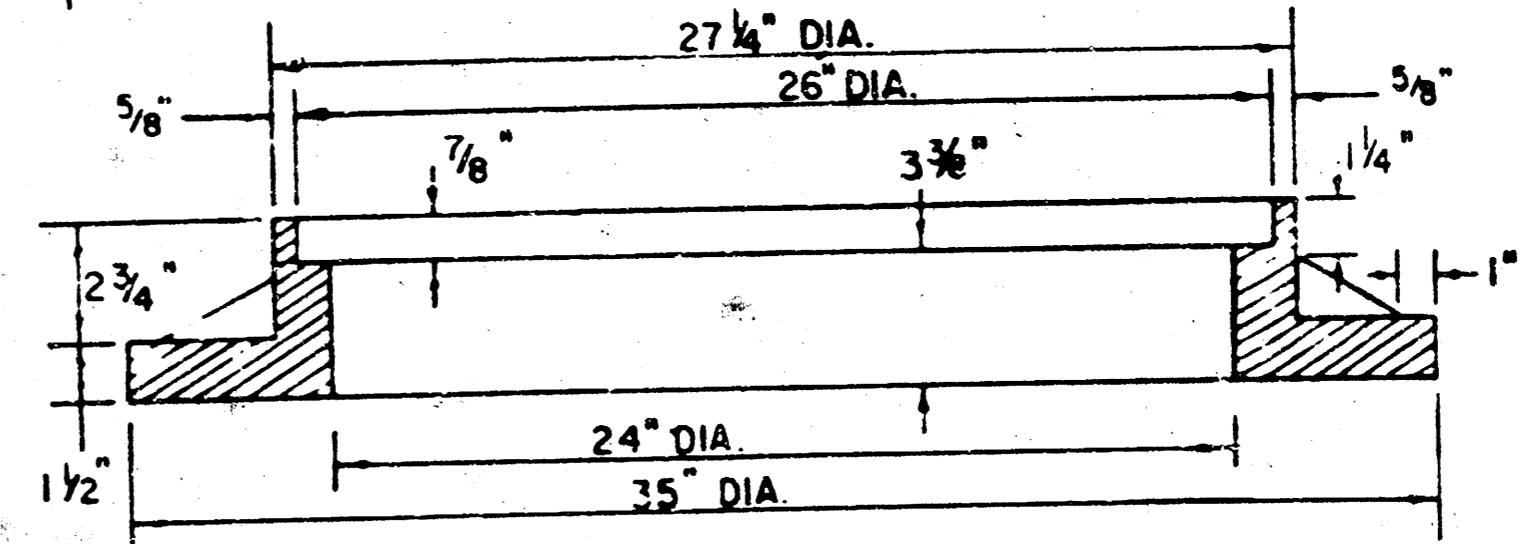
THE ENDS OF ALL PIPES INSTALLED IN INLETS SHALL BE CUT OFF FLUSH WITH THE INSIDE FACE OF THE INLET WALL.

**NOTE: Slope of Inlet Tops to match Sidewalk or Parking Slopes within Limits indicated.

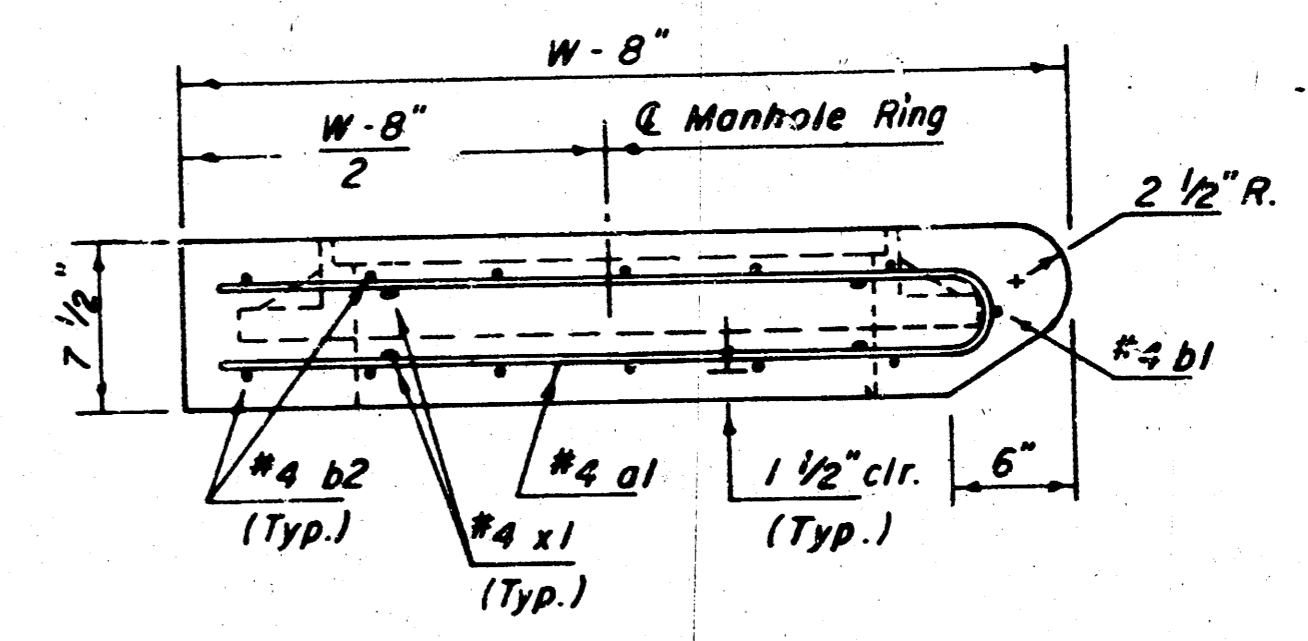


INLET FRAME

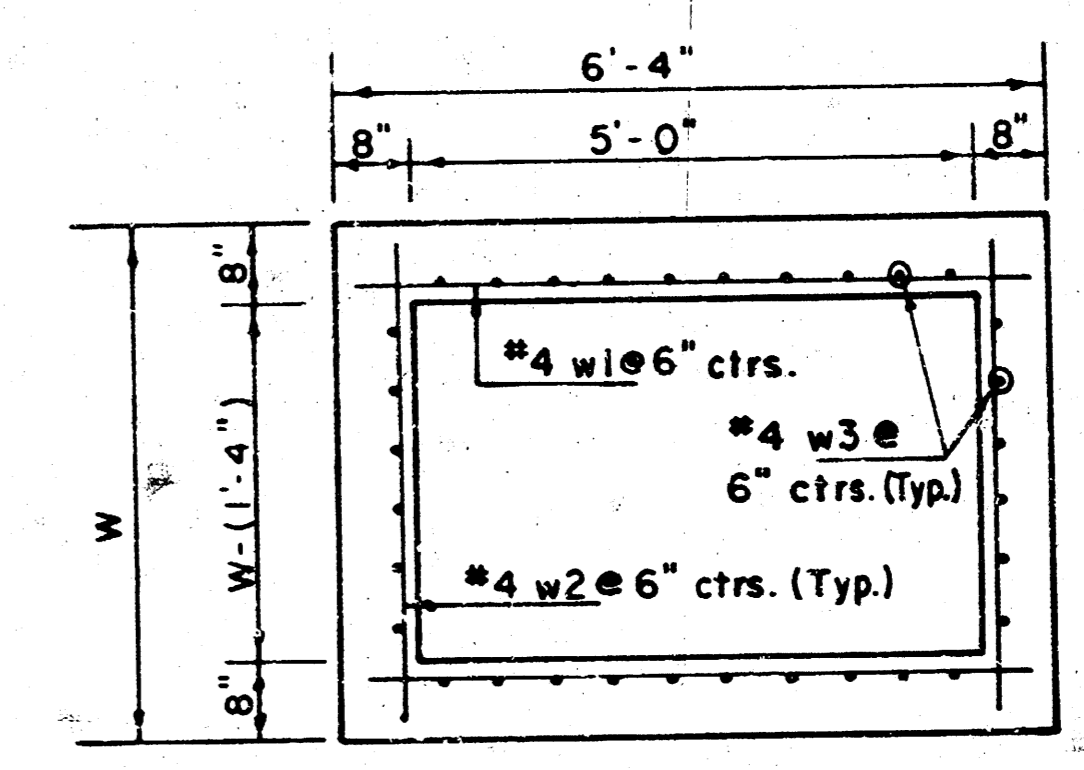
WEIGHT = 180 LBS.



SEE CITY OF WICHITA STANDARD MANHOLE FRAME AND COVER DETAIL SHEET FOR COVER DETAILS TO BE USED WITH INLET FRAME.



SECTION C-C



SECTION D-D

REVISED 12-31-1984 Revised 2-16-1989

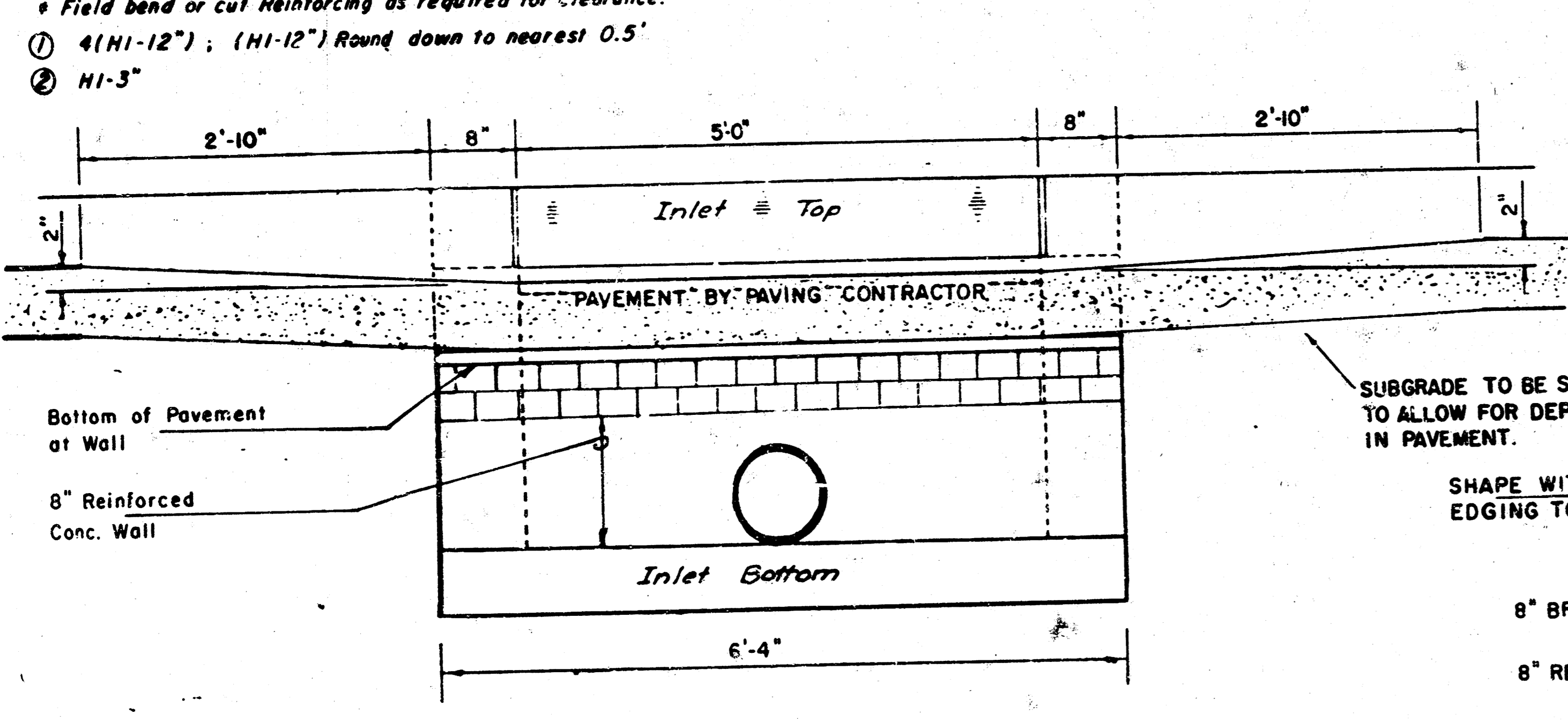
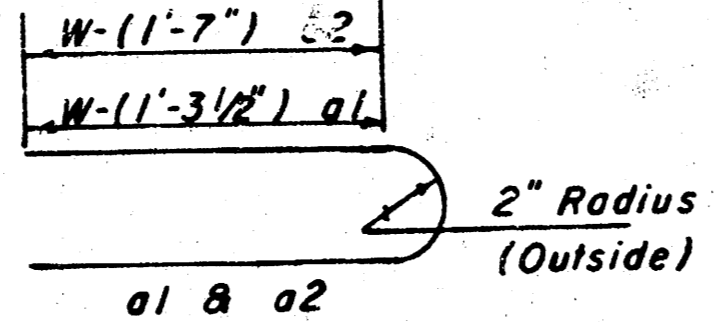
DETAIL STANDARD TYPE IA CURB INLET
 CITY OF WICHITA, KANSAS
 INLET OPENING = 6" x 5' 0"
 INDEX NO. 600200 601265
 JUNE 1984

PRECAST SLAB AND FLOOR REINFORCING									
Mark	Size	No.	Length	No.	Length	No.	Length	No.	Length
a1	#4	6	6'-7"	6	8'-7"	6	10'-7"	6	12'-7"
a2	#4	4	6'-0"	4	8'-0"	4	10'-0"	4	12'-0"
a3	#4	13	4'-1"	13	5'-1"	13	6'-1"	13	7'-1"
b1	#4	1	4'-9"	1	4'-9"	1	4'-9"	1	4'-9"
b2	#4	23	6'-1"	29	6'-1"	35	6'-1"	41	6'-1"
x1	#4	8	3'-10"	8	4'-2"	8	4'-6"	8	4'-10"

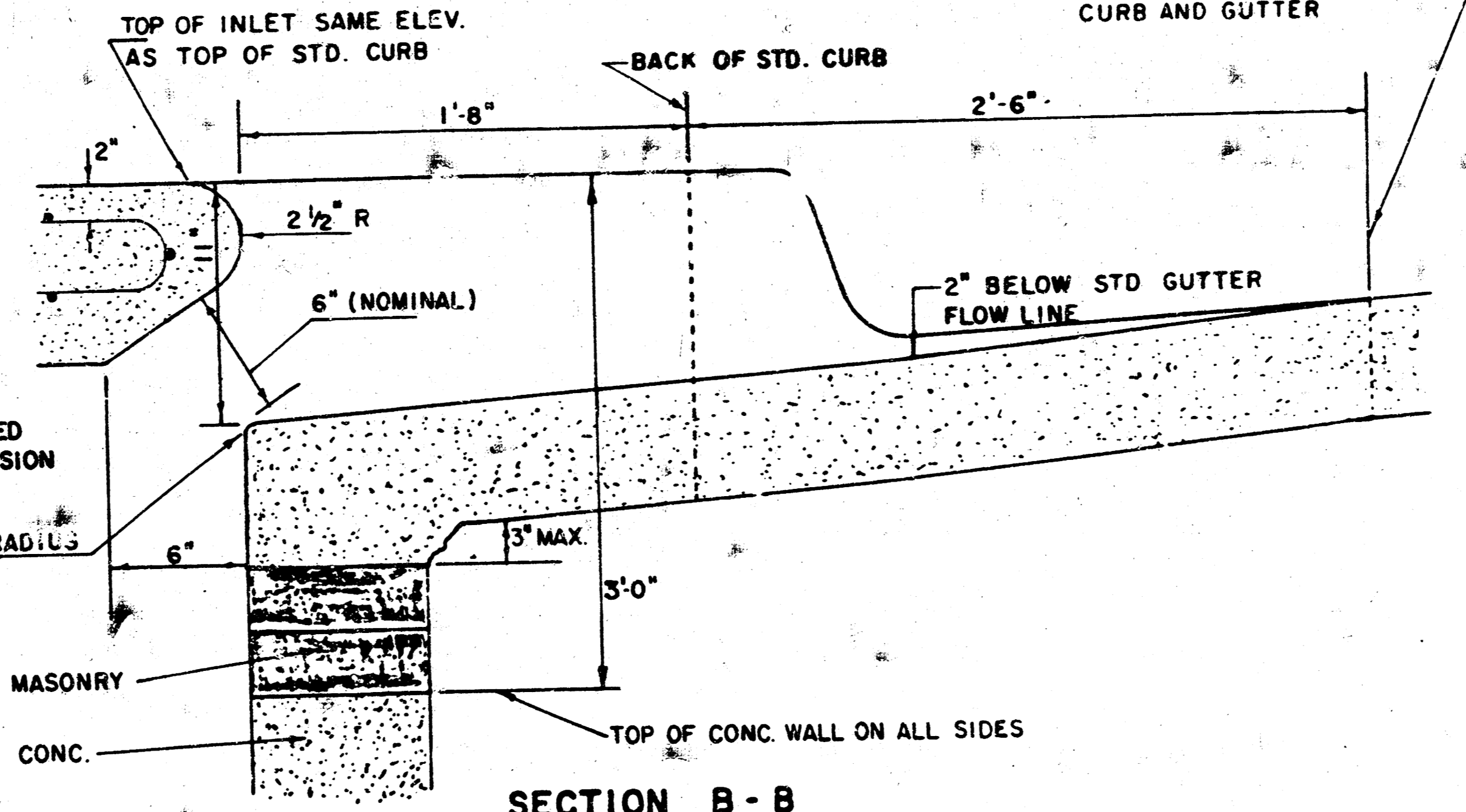
WALL REINFORCING									
Mark	Size	No.	Length	No.	Length	No.	Length	No.	Length
w1	#4	1	6'-1"	1	6'-1"	1	6'-1"	1	6'-1"
w2	#4	1	4'-1"	1	5'-1"	1	6'-1"	1	7'-1"
w3	#4	32	2	36	2	40	2	44	2

STANDARD CURB INLET PRECAST TOPS			
W	PRE-CAST TOP SIZE	PIPE SIZE	CU. YD. CONC.
4'-4"	3'8" x 6'4" x 7 1/2"	21" & SMALLER	0.38 ±
5'-4"	4'8" x 6'4" x 7 1/2"	24" & 30"	0.51 ±
6'-4"	5'8" x 6'4" x 7 1/2"	36" & 42"	0.64 ±
7'-4"	6'8" x 6'4" x 7 1/2"	48" & 54"	0.77 ±
8'-4"	7'8" x 6'4" x 7 1/2"	60" & 66"	0.90 ±

BENDING DIAGRAM

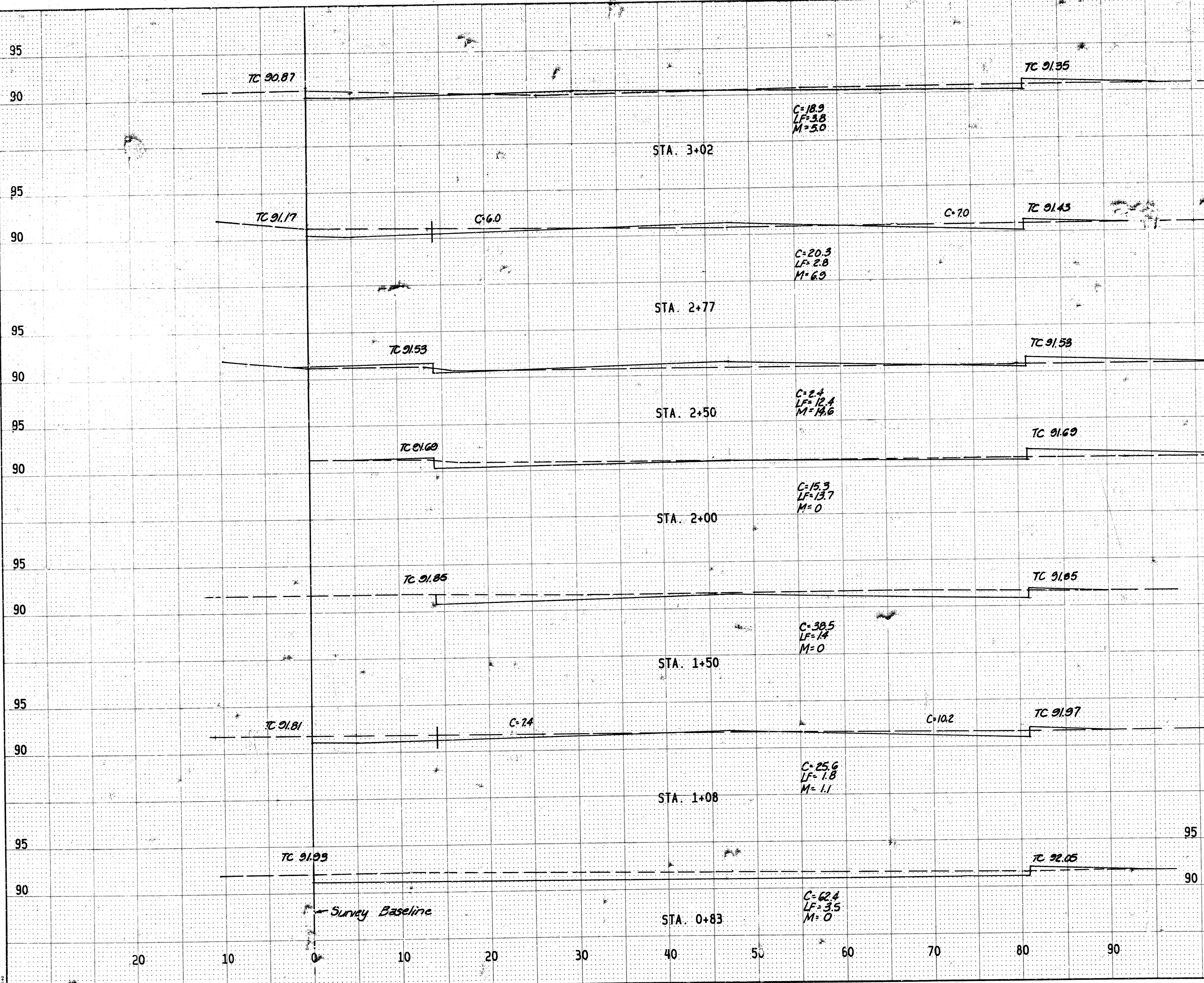


SECTION E-E



SECTION B-B

FILMED FROM THE BEST AVAILABLE COPY



x25
C=18.1 C.Y.
LF=3.1 C.Y.
M=5.5 C.Y.

x27
C=7.7 C.Y.
LF=7.6 C.Y.
M=10.8 C.Y.

x50
C=16.4 C.Y.
LF=24.2 C.Y.
M=13.5 C.Y.

x50
C=49.8 C.Y.
LF=14.0 C.Y.
M=0.0 C.Y.

x42
C=43.6 C.Y.
LF=2.5 C.Y.
M=0.5 C.Y.

x25
C=40.7 C.Y.
LF=2.5 C.Y.
M=0.5 C.Y.

SHEET TOTALS
Excavation 176.3 C.Y.
Loose Fill 55.9 C.Y.
Manipulated Fill 31.2 C.Y.

PLAN
DATE: _____ BY: _____
PROJECT NO.: _____
SHEET NO.: _____
TOTAL SHEETS: _____
NOTE BOOK NO.: _____
DATE OF PLAN CHECKED: _____
BY: _____

PROFILE
DATE: _____ BY: _____
PROJECT NO.: _____
SHEET NO.: _____
TOTAL SHEETS: _____
NOTE BOOK NO.: _____
DATE OF PROFILE CHECKED: _____
BY: _____

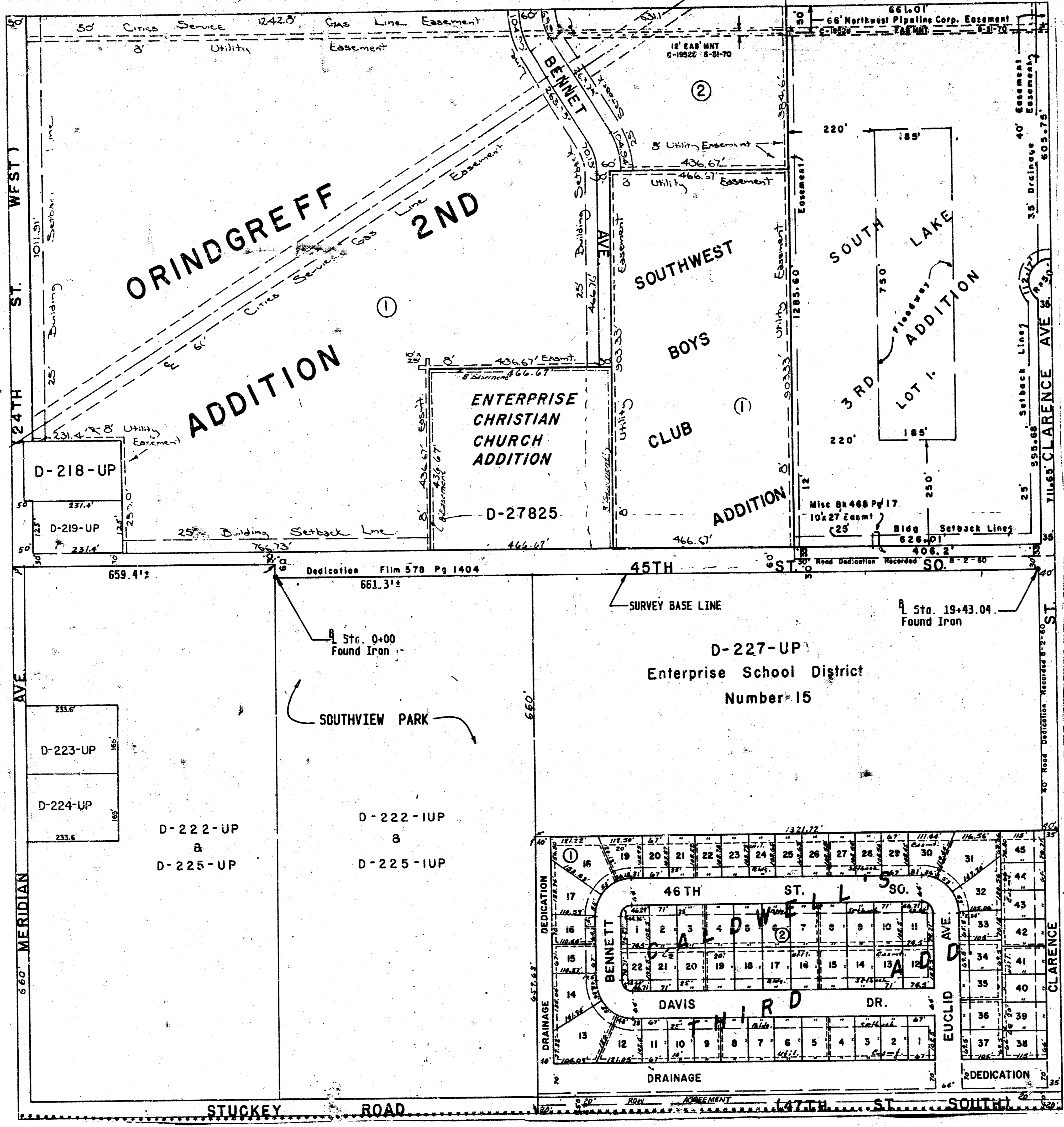
POE & ASSOCIATES OF KANSAS INC. CONSULTING ENGINEERS 1325 Olive St. Suite 1111 • Wichita, KS 67202 • 316-261-4114	
DESIGNER: KH	CROSS SECTIONS SOUTHVIEW PARK CITY OF WICHITA, KANSAS
ENG. TECH: TEB	
DRAWN BY: TEB	
DATE: OCT 1989	
SHEET: 5 OF 6	INDEX NO. 608265

FILMED FROM THE BEST AVAILABLE COPY

STATE	PROJECT NO.	FISCAL YEAR	SHEET NO.	TOTAL SHEETS
-------	-------------	-------------	-----------	--------------

PLAN	SURVEYED	DATE
	PLOTTED	BY
	NOTES CHECKED	
	PT. OF WAY CHECKED	
	NO.	

PROFILE	SURVEYED	DATE
	GRADES CHECKED	BY
	STRUCTURE NOTATIONS CHECKED	
	NO.	



SCALE: 1"=150'

POE & ASSOCIATES OF KANSAS INC.
CONSULTING ENGINEERS
434 N. Olive, Suite 110 • Wichita, KS 67208 • 316-265-4114

DATE	10/19/89	CITY OF WICHITA, KANSAS
INDEX NO.	608208	

FILMED FROM THE BEST AVAILABLE COPY....