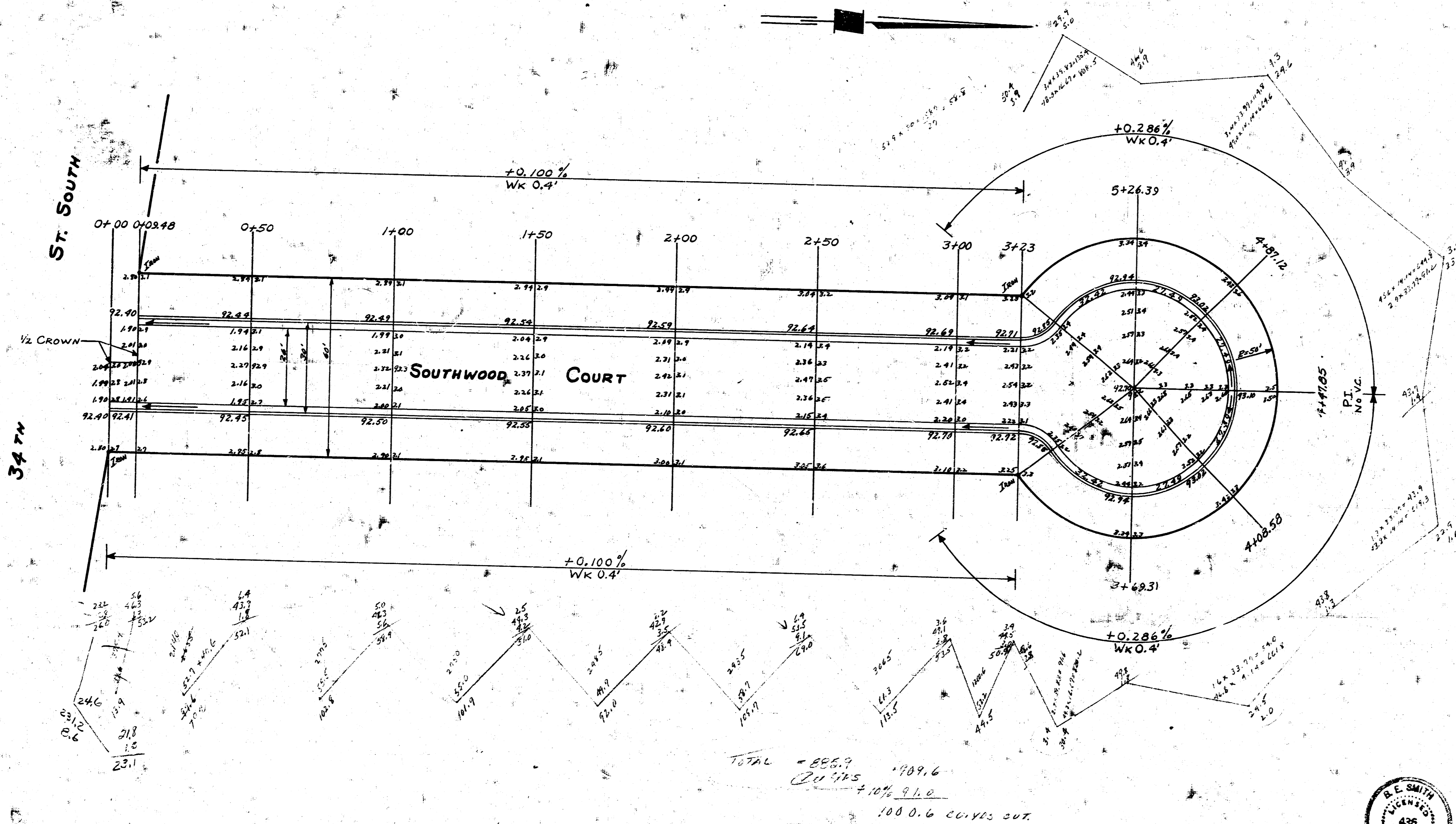


B.M. 94.74 N.W. COR. CONC. PORCH No. 911 34TH ST. SOUTH
 Ho. 1ST ON S.E. COR. OF 34TH ST. So. & SOUTHWOOD DR.
 B.M. 95.95 N.W. COR. CONC. PORCH 3340 & HANDLEY No. 3356
 STATIONING & BASE LINE ON EAST PROP. LINE.



SOUTHWOOD COURT
 NORTH OF 34TH ST SOUTH
 26-2-30-AC
 CITY OF WICHITA KAN.
 BE SMITH CITY ENGINEER
 JAN. 1955 Proj. No. C14-23



3 11 5 e