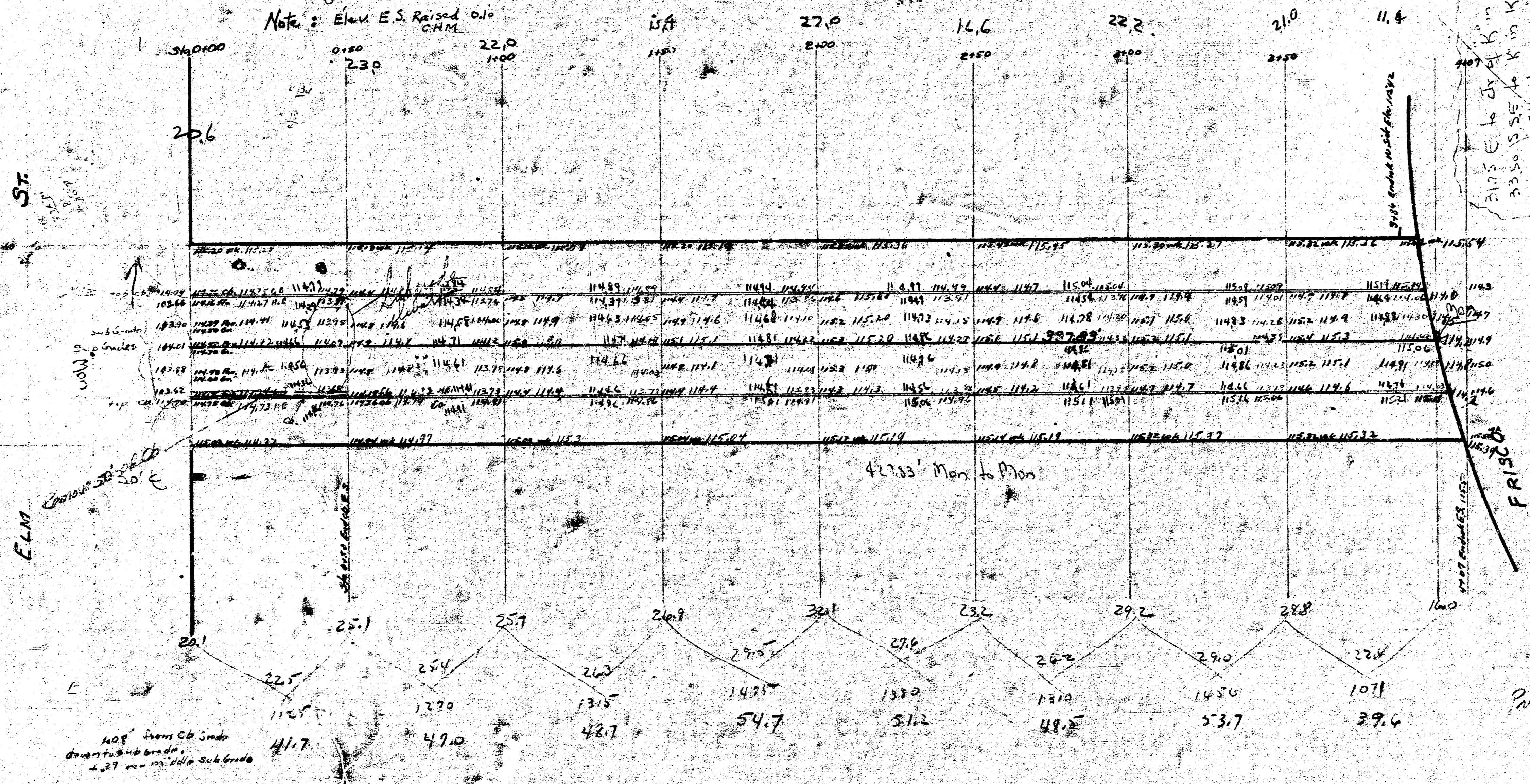


Set all elevations on E.S.
 1' higher to provide
 for rise off into intersection
 at Elm St.

SAPRUC AV. NL. ELM. TO S.E. FRISCO R/W: 30" CONCRETE INTEGRAL CURB

B.M. Elev. 118.25 Top W. end Conc. Pipe W.S. Grove N.S. Frisco Pl.
 118.80 K. in Keller on W. 20' S. of Frisco Elm. E.S. Spruce
 114.35 Top of 10" C. Elm. Spruce

Note: Elev. E.S. Raised 0.10
 C.M.



21.5' E. to 1/2" K. in Keller etc. of W.S. Dr.
 23.50 15.55' to K. in Keller etc. po.
 30.15 E.S. to 1/2" K. in Keller etc. in intersection
 1 Mon

60' St

Prop $385.1 - 385 = 423.6$ cutth.