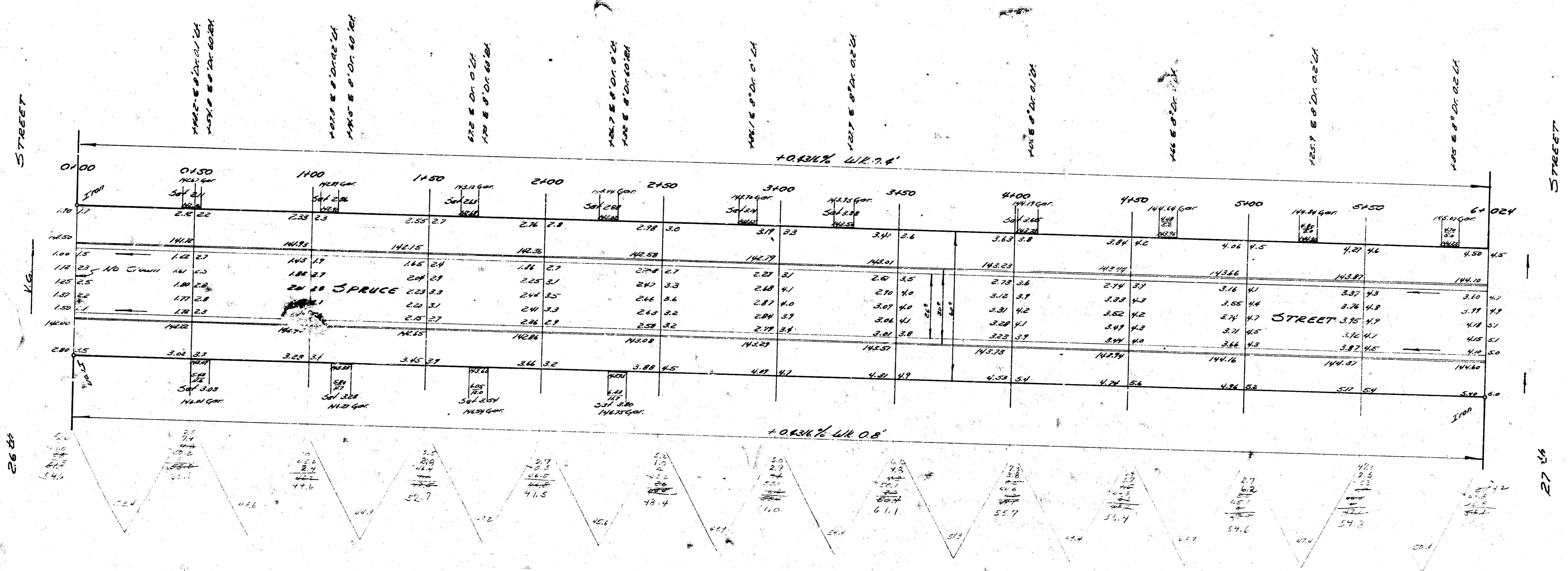


8.14. 142.08-2" in Ritchie W. Co. Spruce S. 2.25%



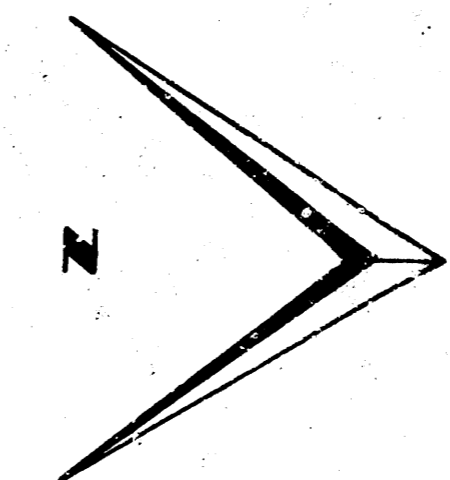
Check
 1/27/55
 1/27/55

NOTE
 Stationing on W.P.

Total Excav.
 C. 44
 None
 410%

Excav	1099.3	Fill	None
	1099.3		
	1099.3		
	1099.3		

1099.3 cu. yds.



Scale 1/4" = 1'-00"



SPRUCE
 N.L. 26th to S.L. 27th
 26-2-30 A.C.
 CITY OF WICHITA
 B.E. Smith City Engineer
 Nov. 1955 Proj. No. C13-37