

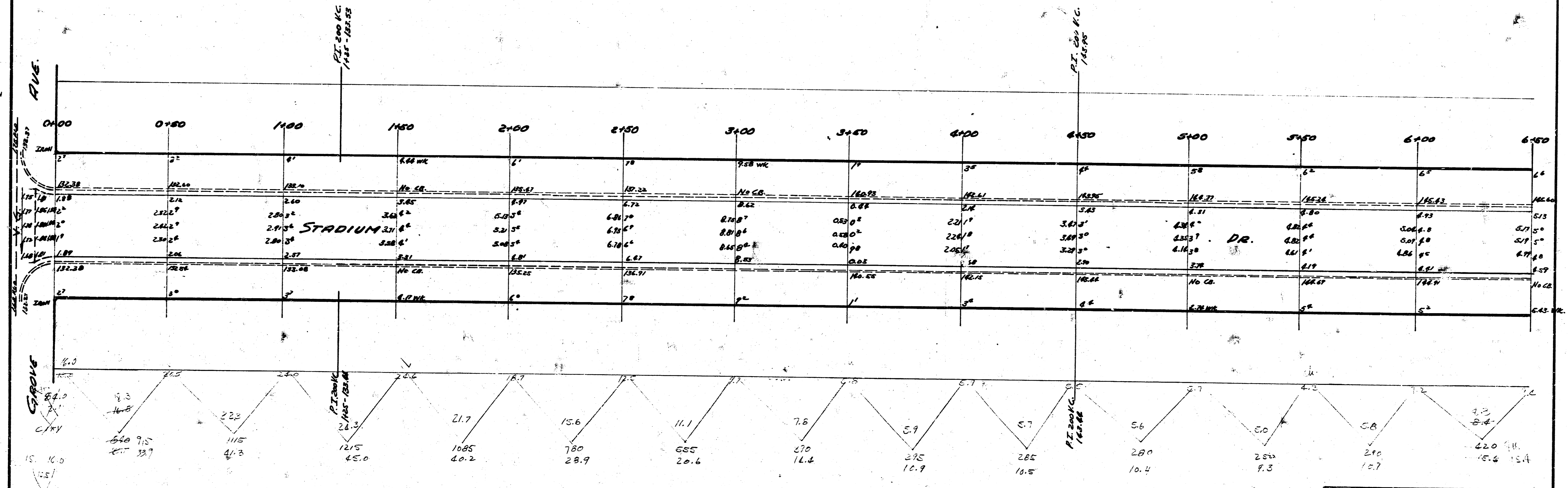
S-14

B.M. 5" IN GLOBE S. END W.L. DR. WY. HAS. # 2002 N. GROVE - 130.52
B.M. 6" IN GLOBE E. END S.W. GROVE & STADIUM - 132.28
B.M. S.W. COR. CONC. PARCH HAS. # 216 No. ERIE - 137.15

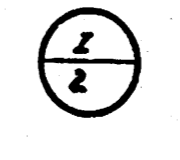
EXCAV.
CITY PROP.
31' 205.1
+10% 3.6 20% 50.2
3.6 55.2



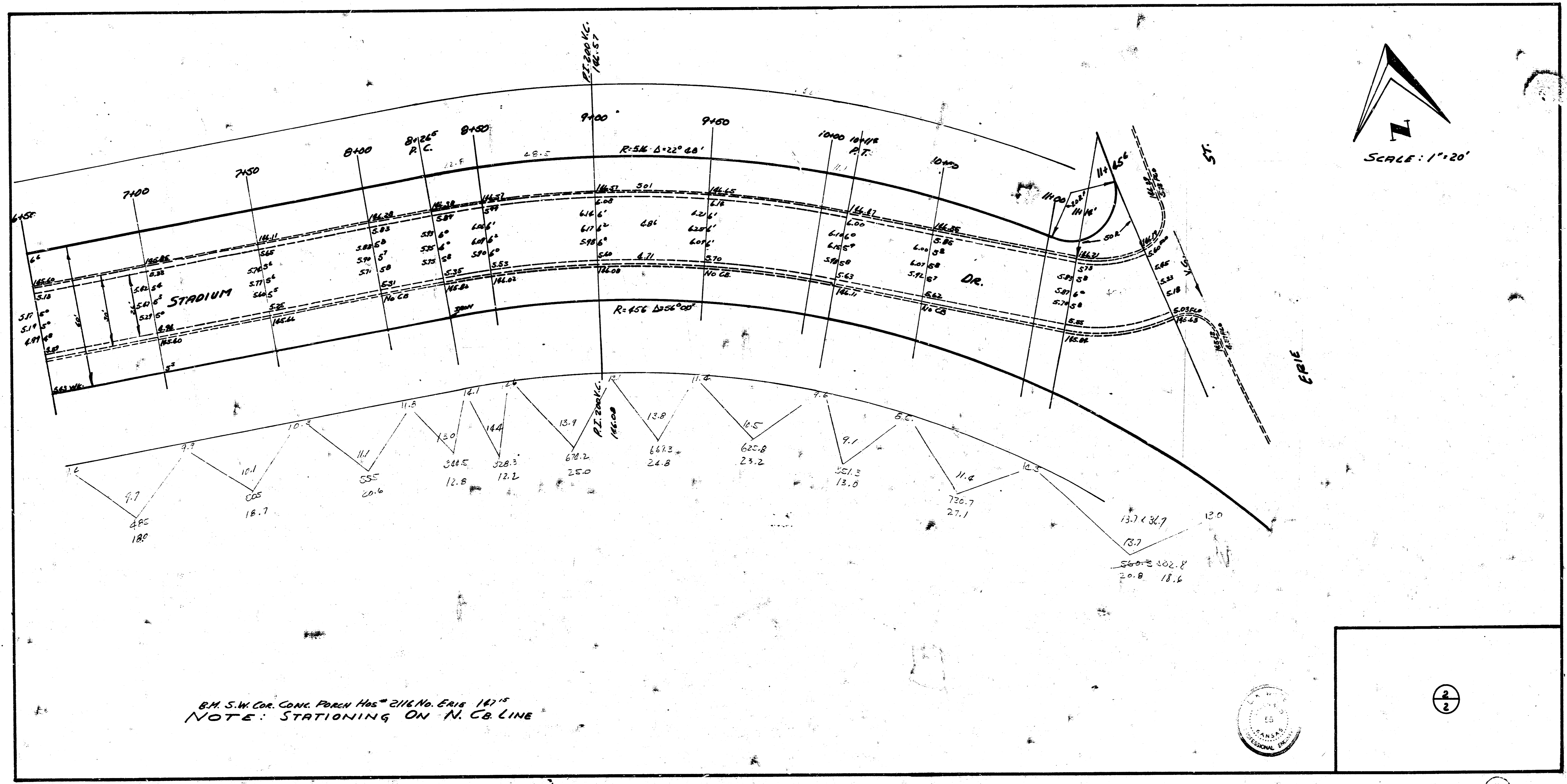
SCALE: 1" = 20'



NOTE: STATIONING ON N. CR. LINE



STADIUM DR.
E.L. GROVE TO W.L. ERIE
26' CONC.
CITY OF WICHITA, KANSAS
L.R. WHITE CITY ENGINEER
JUNE 1952 PROJ. No. 511-322



1512