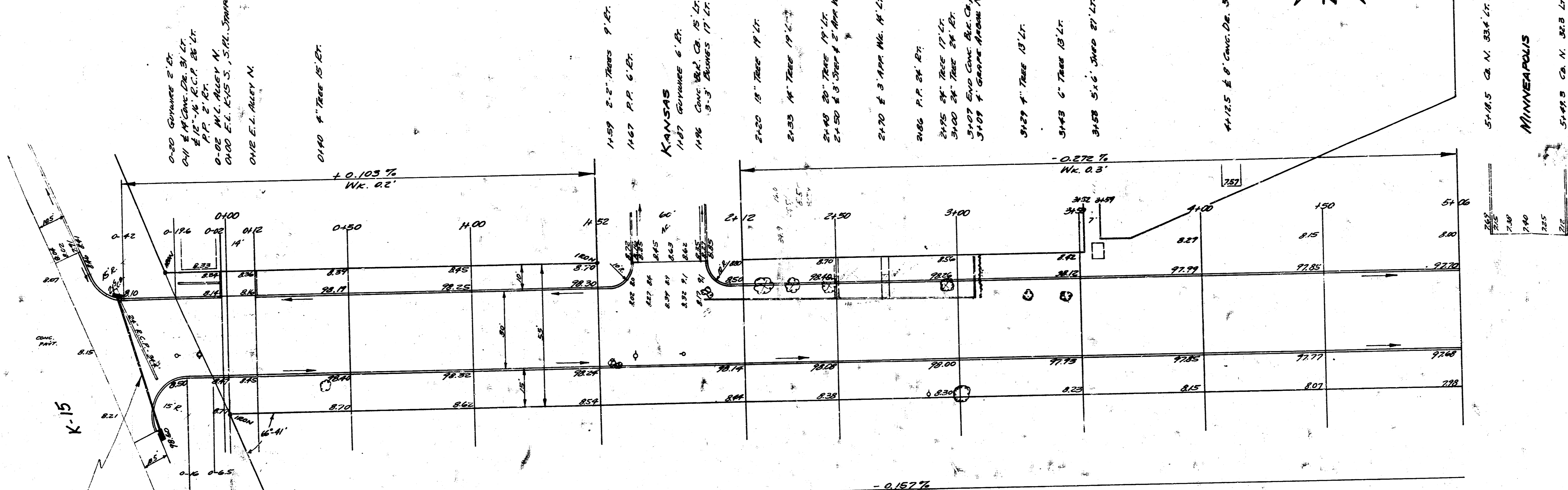
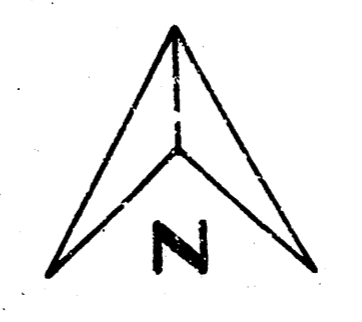


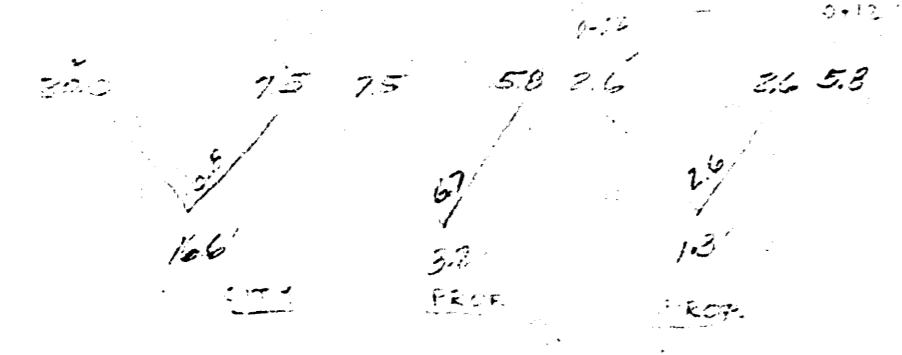
B.M. 99.32 "M" IN NW COR. N.W. COR. MINNESOTA N. & STAFFORD
 B.M. 78.71 "E" IN ETCHE S. END DE. EAD., N. S. KANSAS, N.P.L. STAFFORD
 CHAIN E. ON 25' OFFSET FROM S.P.L.



NOTE: REBUILD EXISTING
 C.B. & INSTALL 54" R.C.P.
 TO NEW C.D. LEAVE HOLE IN
 EAST SIDE OF NEW C.B. SO WATER
 FROM DITCH CAN DRAIN INTO SEWER.



SUNNY F.I.E. BK. 16-5
 Plan
 Entered 37



HYDRAULIC

PROP.	FIELD	ELV.	FEEL
2412	438.0	100.8	11.2
4107	410.5	110.6	11.2
453 (410)	478.4	123.5	15.6 ON 105.



1
2

STAFFORD
 E.L. HYDRAULIC TO E.L. LOT 1, Q.L.D. BONHOFF AVE.
 30' CONC. & CO.
 CITY OF WICHITA, KANSAS
 B.E. SMYTH - CITY ENGINEER
 MAY, 1954 PROJ. C14-93

