

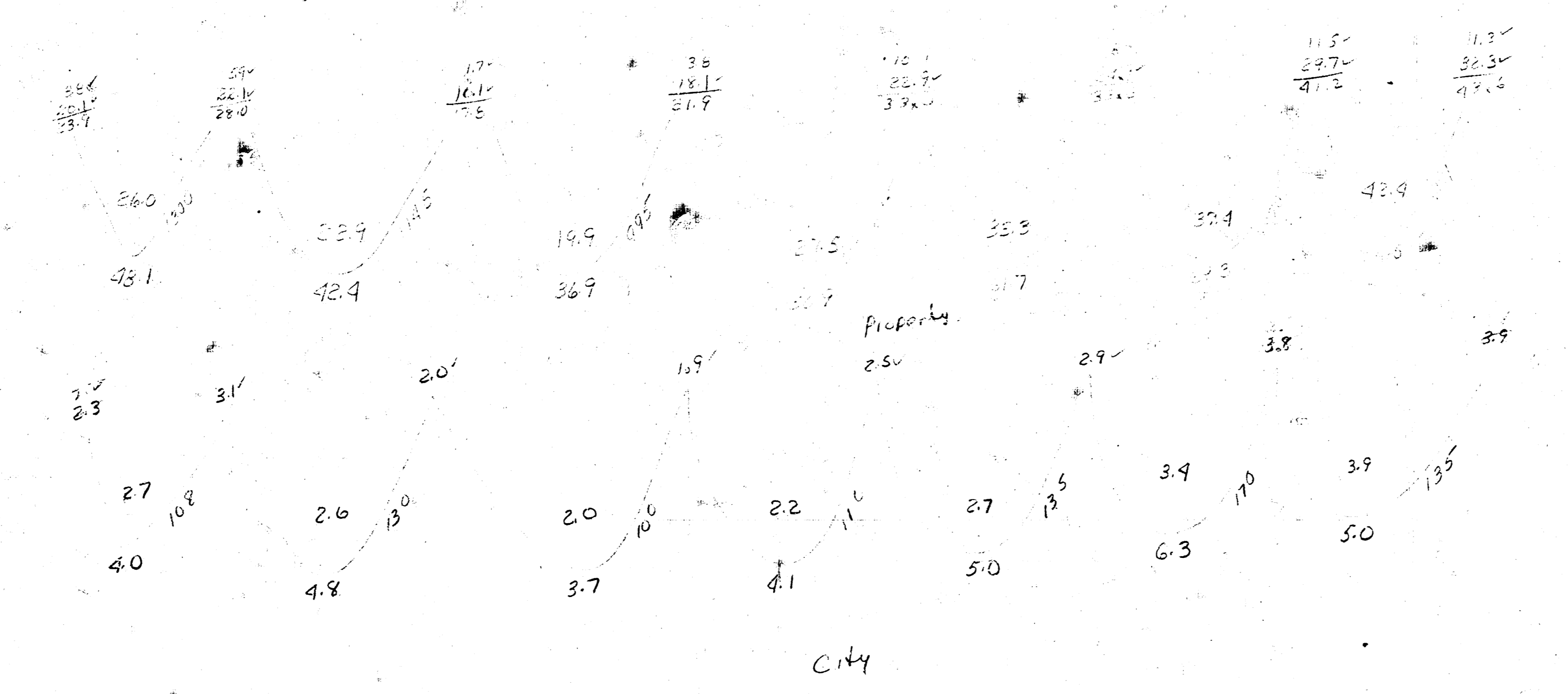
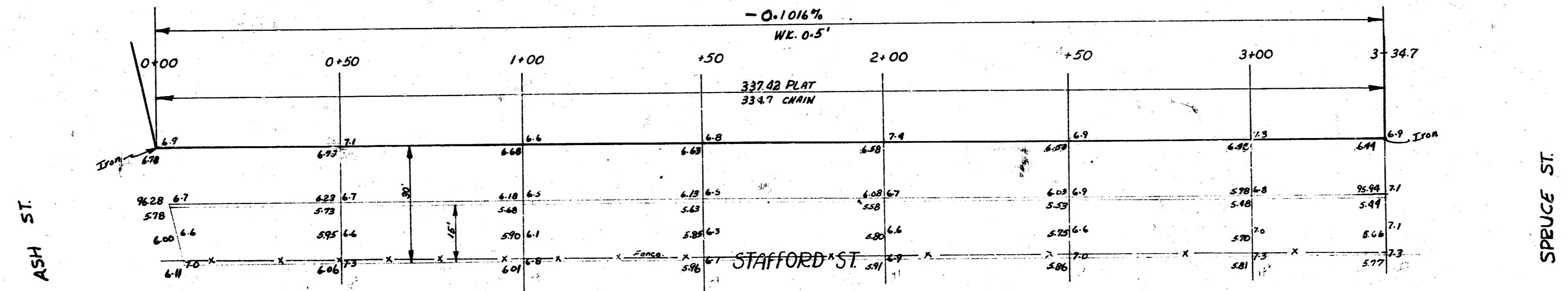
12

BM. 98.60 SE cor conc. porch Ho. NW cor. Rule of Spruce.

4.0
4.1
4.2
4.3
4.4
4.5
4.6
4.7
4.8
4.9
5.0
5.1
5.2
5.3
5.4
5.5
5.6
5.7
5.8
5.9
6.0
6.1
6.2
6.3
6.4
6.5
6.6
6.7
6.8
6.9
7.0
7.1
7.2
7.3
7.4
7.5
7.6
7.7
7.8
7.9
8.0
8.1
8.2
8.3
8.4
8.5
8.6
8.7
8.8
8.9
9.0
9.1
9.2
9.3
9.4
9.5
9.6
9.7
9.8
9.9
10.0

Property - 363.15 cu yds
 +10% $\frac{36.9}{400.2}$

City 32.9
 +10% 3.3
 36.2



7 dr
 N 1/2 STAFFORD
 EL ASH WL SPRUCE
 15' CONC. & CB.
 CITY OF WICHITA, KANS.
 LY WHITE CITY ENGINEER
 AUGUST, 1950 CIO - 94