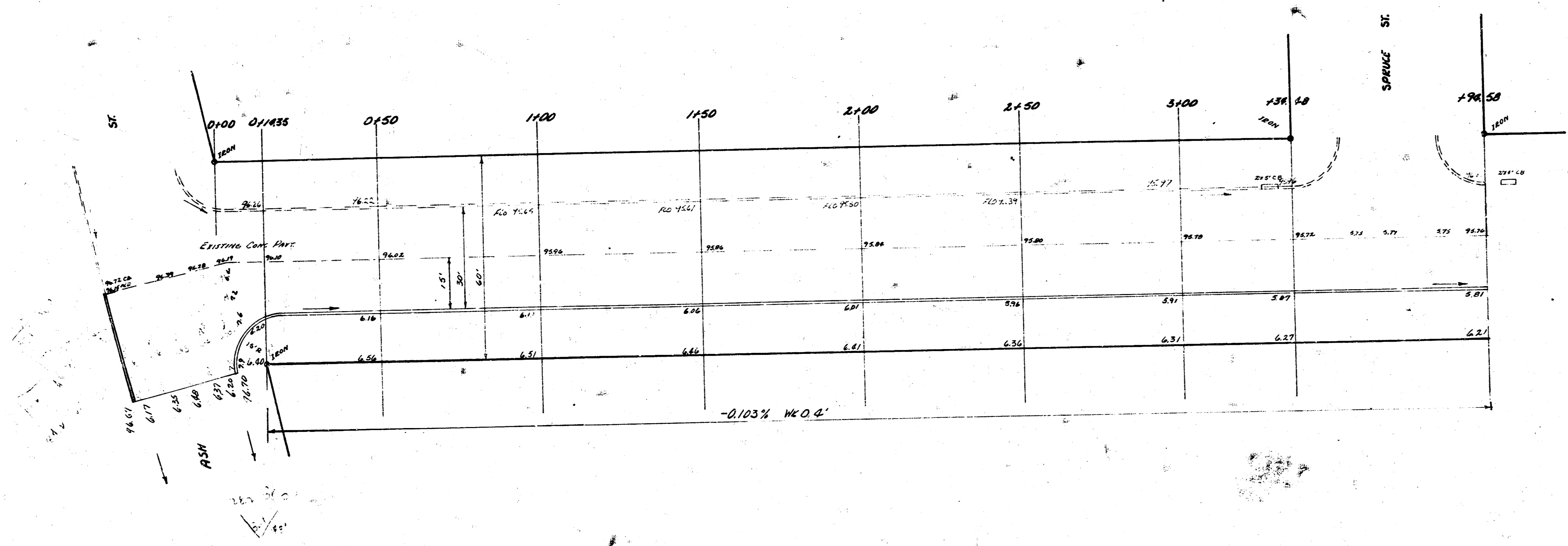


BM 9631 6" in Case of End Road N. Stafford & EL. Ash  
 Chain E on N 12



Checked by  
 Date  
 Checked by



S 1/2 STAFFORD  
 EL. ASH TO EL. SPRUISE  
 15' CONC. CCG  
 CITY OF WICHITA KANSAS  
 B.E. SMITH CITY ENGINEER  
 FEB. 1955 Proj. No. C-16-609