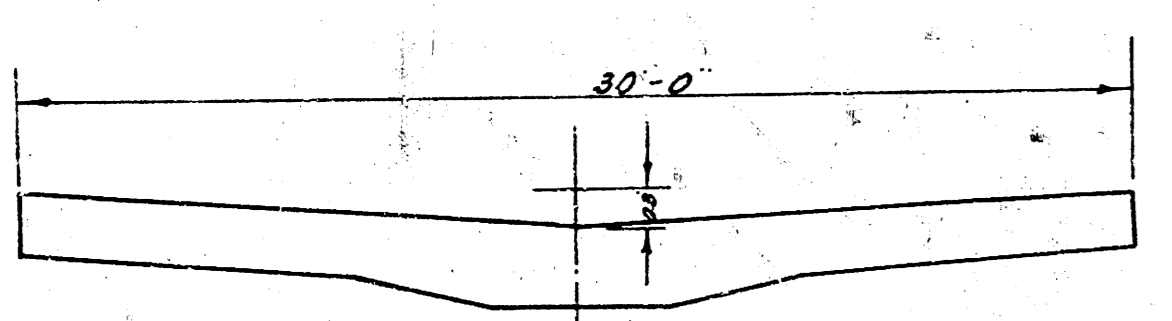
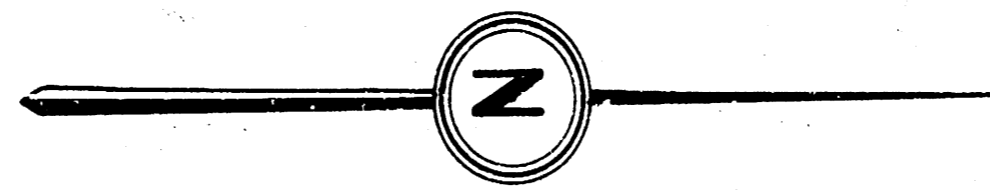
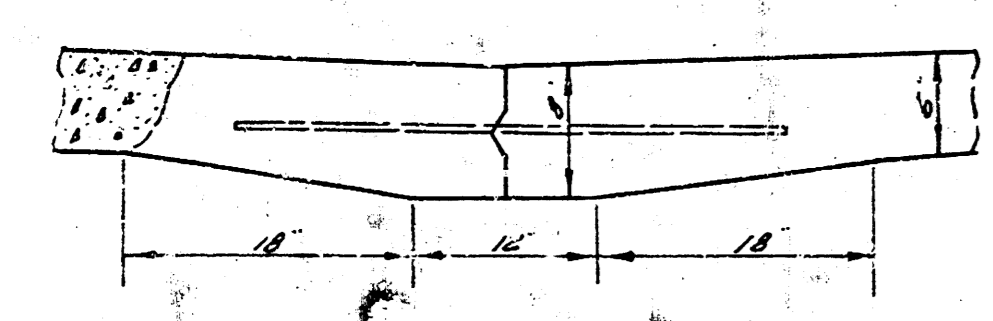


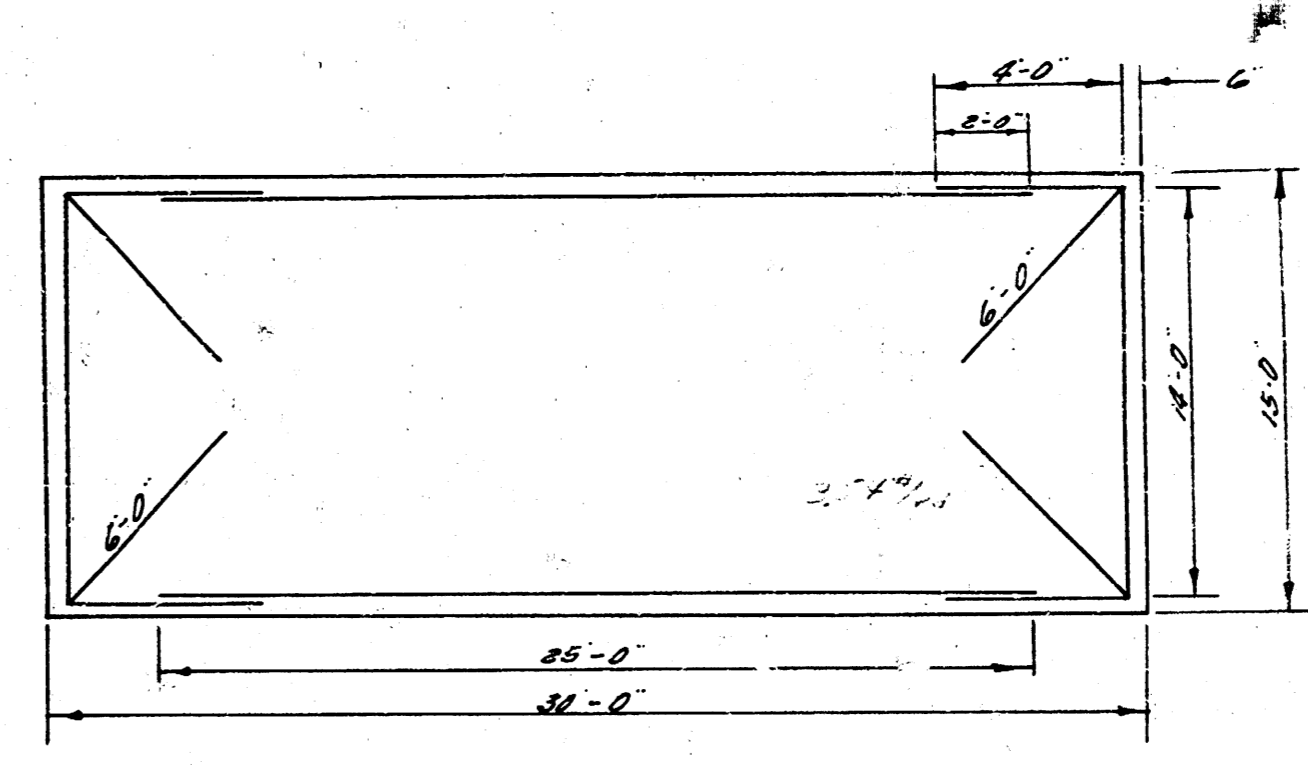
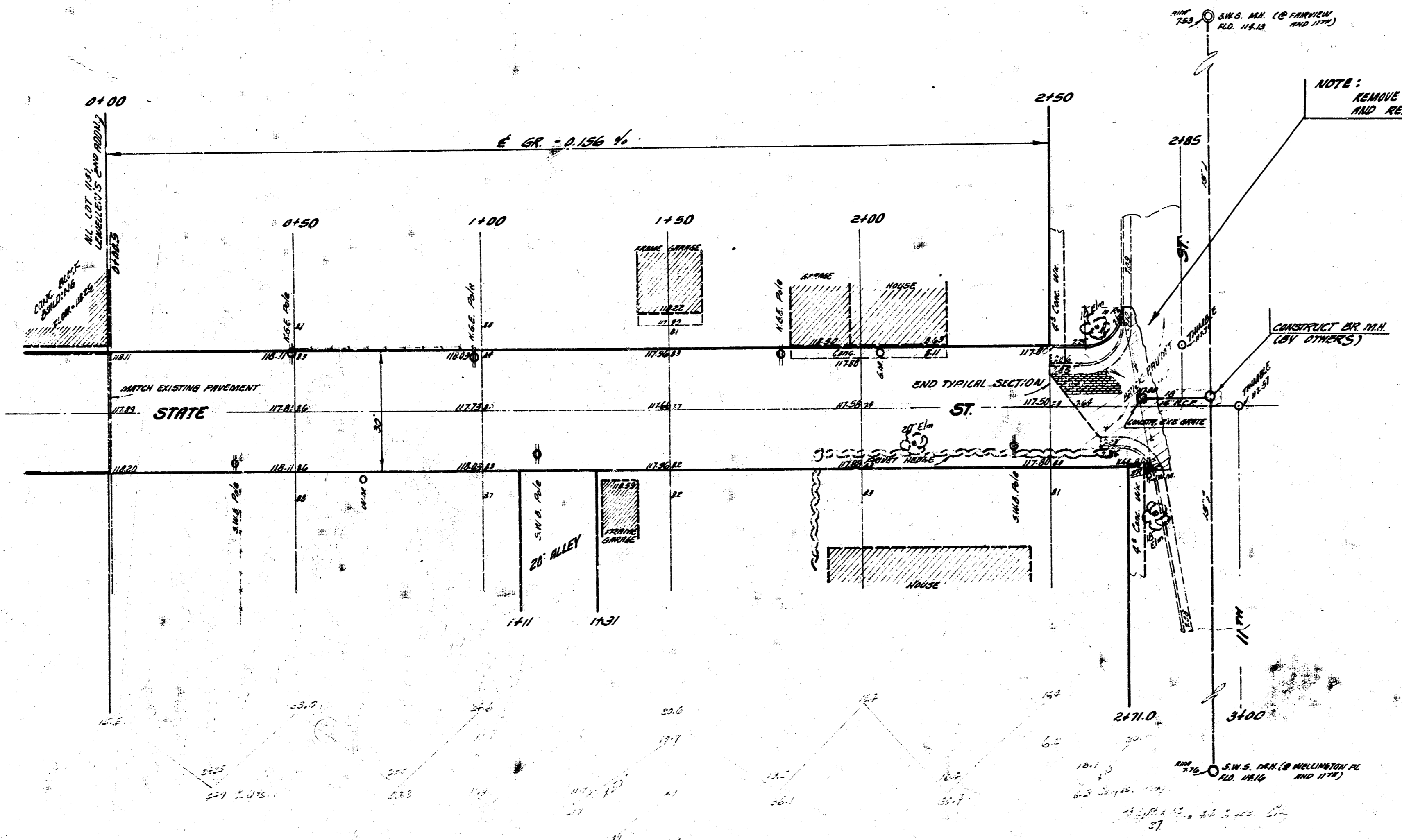
S.M. 181A S.E. COR. TOP CONC. STEP NO. 300 W. 17TH ST.
 S.M. 181B 3' IN JUNCTION OF ... W. 34th WARD & 17TH ST.
 STATIONING & ABELINE ALONG & OF STATE ST.



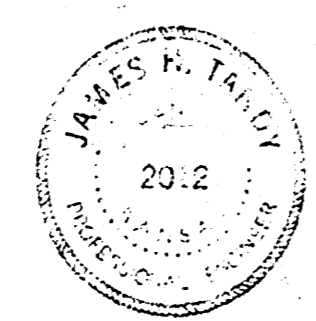
TYPICAL SECTION
 (EXCEPTION AT CURBED SECTIONS)
 NO SCALE



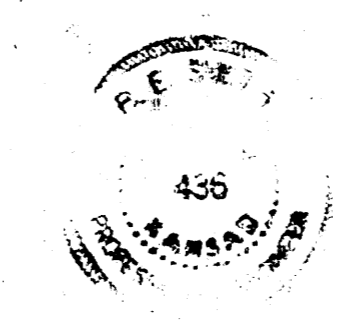
USE #4 BARS, 3' LONG ON 2'-0" CENTERS
 DETAIL OF MASTIC JOINT



STEEL PATTERN
 NO SCALE



SUBMITTAL CITY
 1948 314
 2018 10-5
 1971 215 11-3
 2013 241 12-8 2-46



STATE ST.
 AL. LOT 181,
 LEWELLEN'S 2ND ADDN. TO S.E. 17TH ST.
30" CONCRETE
CITY OF WICHITA, KANSAS
 W.E. SMITH CITY ENGINEER
 DATE: JULY, '60 PROJ. NO. C-10-38