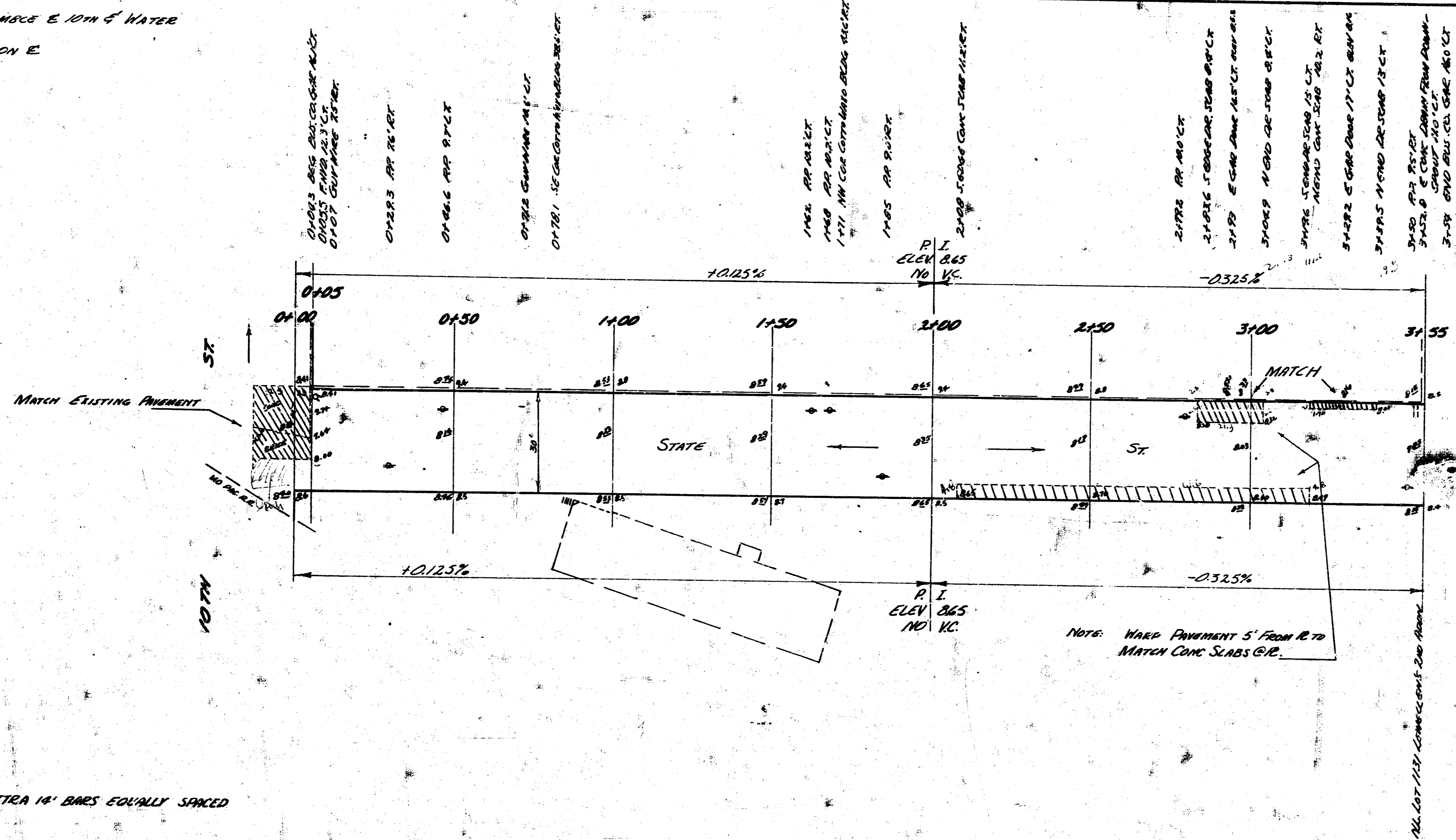


BM 11708 IRON IN THUMB & 10" W & WATER  
STA ON E



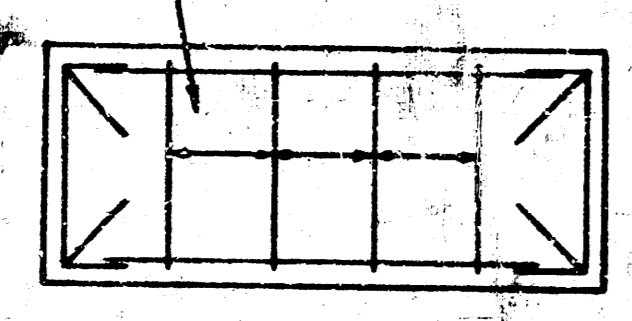
Proj  
 209.7  
 40% 134  
 86.71

NOTE  
 STREET TO BE GRADED SO  
 WATER WILL DRAIN TO NORTH

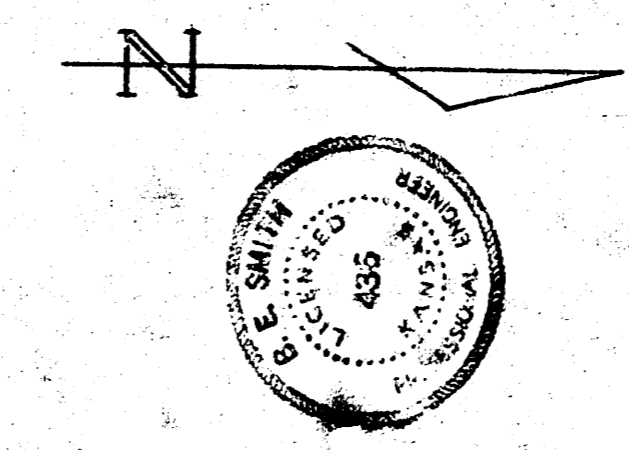
NOTE: WARP PAVEMENT 5' FROM R. TO  
 MATCH CONC. SLABS @ I.P.

Surveyor  
 Plan  
 City of Wichita, Kan.

NOTE: USE 4 EXTRA 1/2" BARS EQUALLY SPACED



STEEL PATTERN



STATE ST.  
 N.L. 10TH TO N.L. 11TH, LEMMON'S 2ND ADDN  
 30' CONC. - 6"  
 CITY OF WICHITA KANSAS  
 B.E. SMITH CITY ENGINEER  
 JUNE 1955 PROJ. NO. C-15-30

250