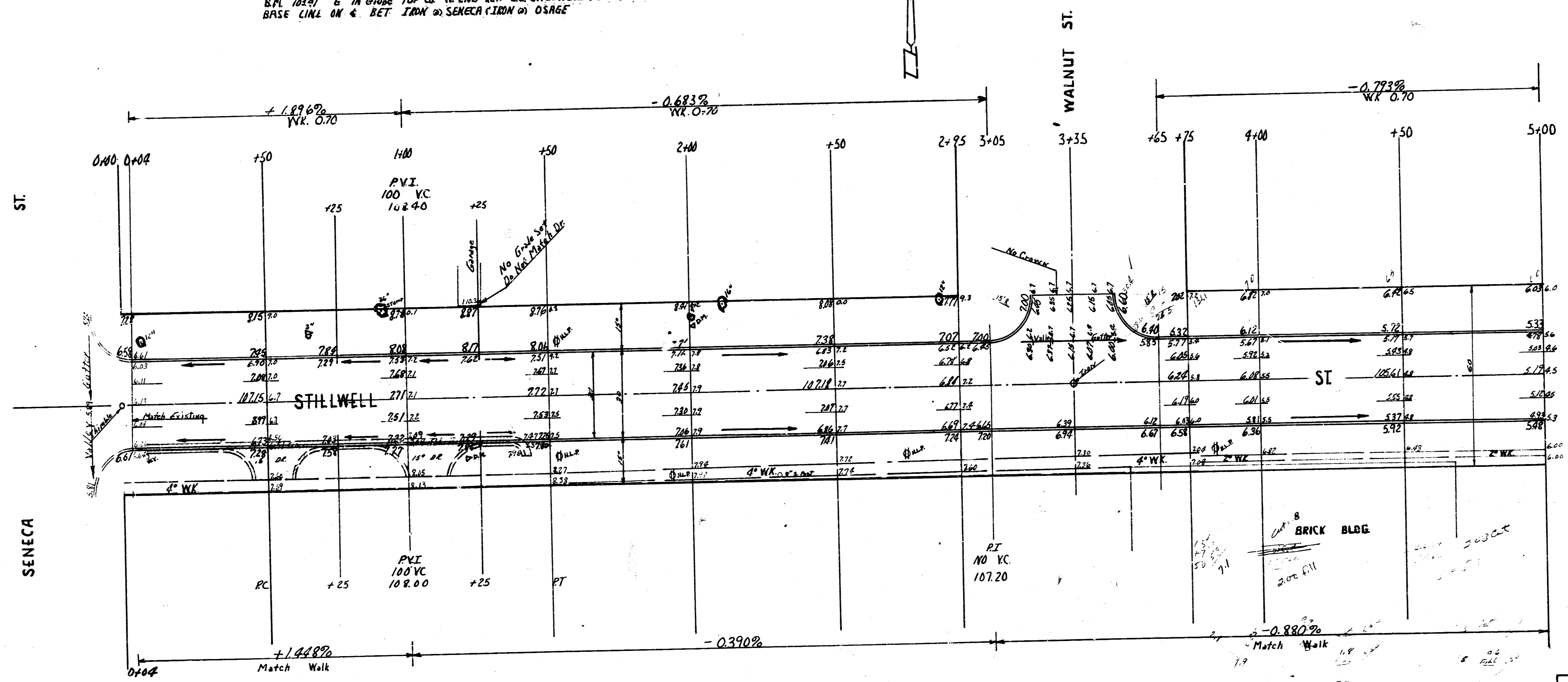


BM 10774 SPIKE N.S. H.L.P. SE SENECA & STILLWELL
 BM 10599 STEP BENCH N.S. H.L.P. S.S. STILLWELL MIDWAY BET WALNUT & HAZLET
 B.M. 10341 6" IN GROUND TOP CORNER END REF. S.S. STILLWELL W.L. OSAGE
 BASE LINE ON 4' BET IRON W. SENECA & IRON W. OSAGE



Notice to Contractor:
 All Entrance Pipes Are to Be Disposed Of In Accordance With
 Instructions Of City Dist Checker

Total Excess

Prop	City	All
6357	147	117.2
7192, 636	12	102.11.6
7993 - 1/16. 182	125.6	12.175



STILLWELL ST
 EL SENECA W.L. OSAGE
 30" CONC. CB
 CITY OF WICHITA, KAN.
 B.E. SMITH CITY ENGINEER
 DATE Aug. 1939 PROJ. NO C-19-89



County Parking Bay

Stillwell - Seneca to Walnut
 Proj. No. C19-89
 Globe Const. Co.

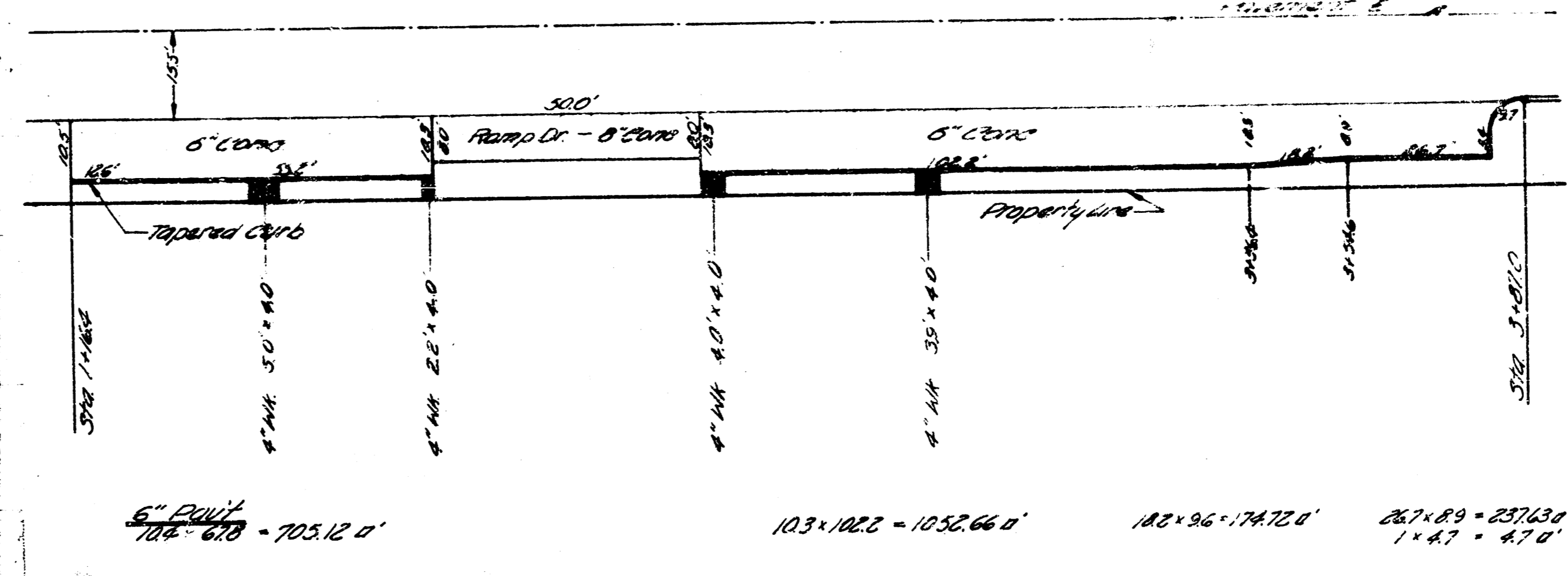
Bill of Materials	Price	Cost
30 Yds 6" Conc Pavt	241.6	3.15
30 Yds 8" Conc Pavt	44.4	4.10
Lin Ft Int. Curb	212.0	0.83
Lin Ft Sep Curb	97	0.80
Sp Ft 6" Walk	80.6	0.25
Lin Ft Expansion Jt	200.0	0.00
Lin Ft Manhole Jt	233.0	0.00
Lin Ft Steel	144.0	0.16
Sp Ft 6" Wire Mesh	400.0	0.05
Per Yds Excavation	104.9	1.10
Total		1,531.93

* Note: Prices as bid on paving Proj. No. C19-89, Stillwell - Seneca to Walnut, except for 6" CONC PAVT, MASTIC Jt & 6" WIRE MESH. PRICES FOR EXCAVATIONS AS OBTAINED FROM EDWARD STEWART OF GLOBE CONST. CO.

Measured by Glenn
 Finald by J. Jones

County Parking Bay

Stillwell Street
 Seneca to Walnut
 PROJ. NO. C19-89



6" Pavt
 103 + 102.0 - 1052.66' 102 + 96 + 174.72' 267 + 89 - 237.62' 1 + 47 - 47.0'

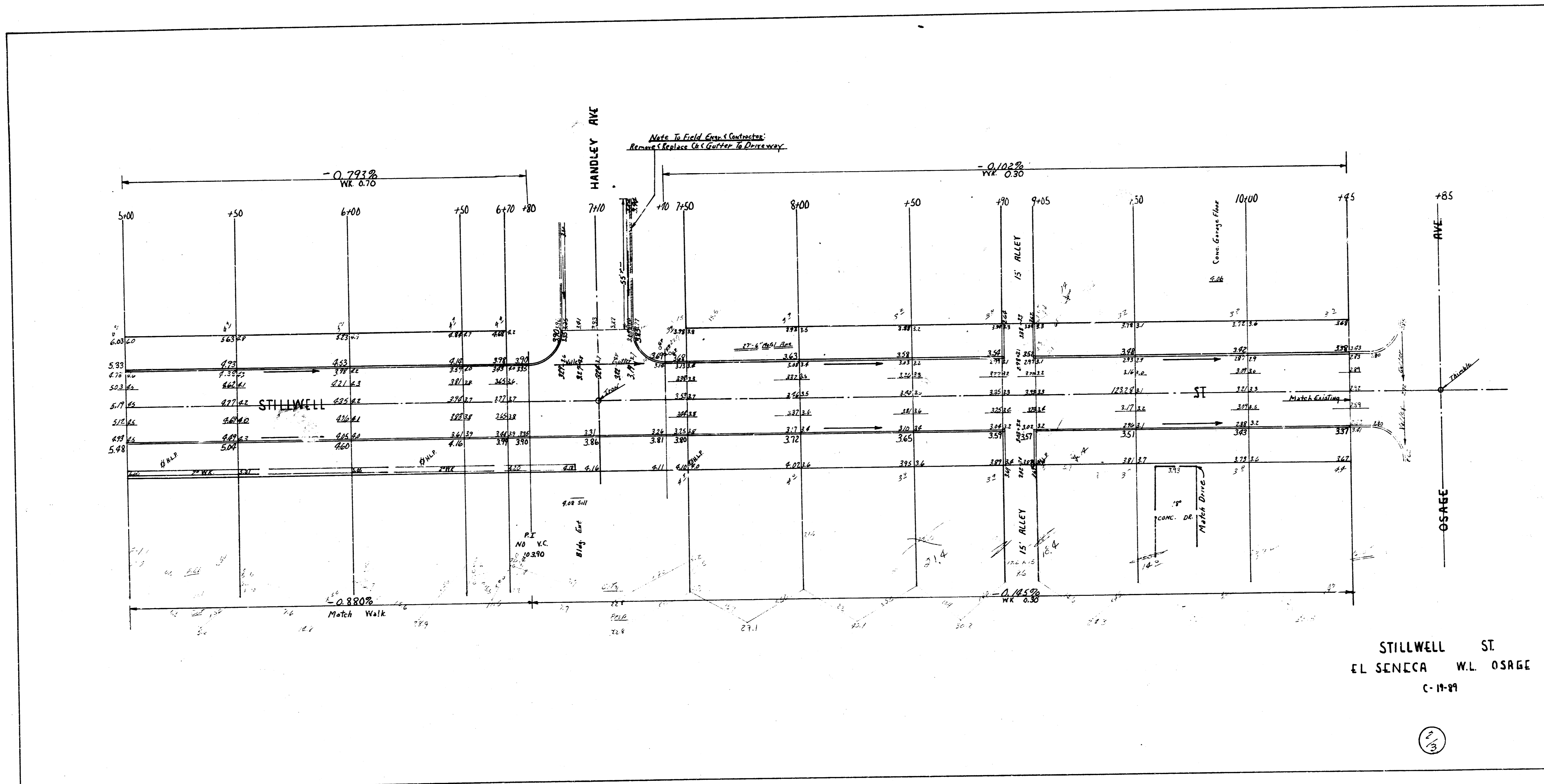
8" Pavt
 30 + 80 + 400' = 440 sq yd

Excavation
 206.0 sq yd x 11' depth = 2266 cu yd

Steel
 93' of 3/4" at 15¢/ft = 1400
 348' of 1/2" at 0.60¢/ft = 2088
 Total = 3488

Total = 2174.85' = 241.6 sq yd

October, '39



STILLWELL ST
 EL SENECA W.L. OSAGE
 C-11-99

