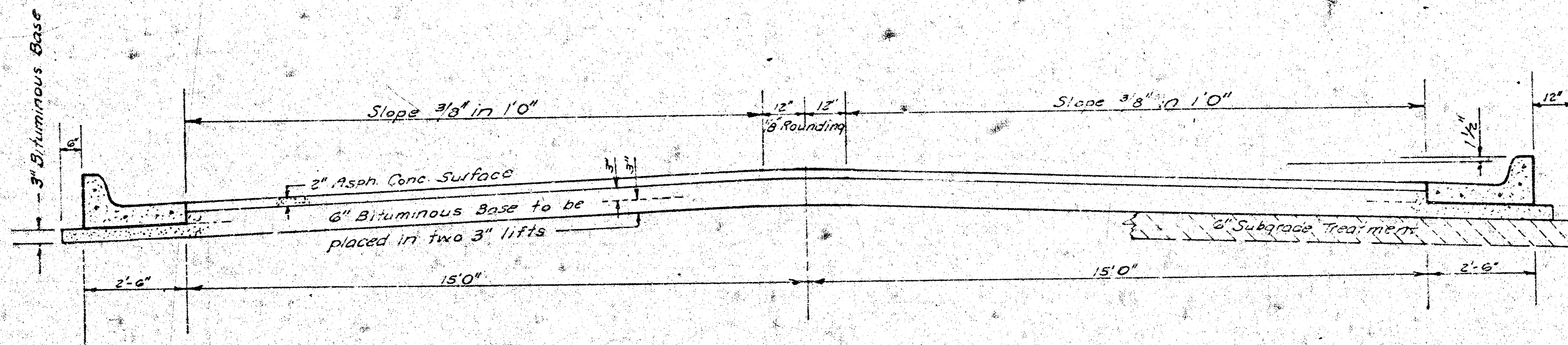


STONY POINT
 from WL Skyview to SL 17th st.
 Project No. DAKS577028
 472-76-245-80513-000-000-001



TYPICAL SECTION

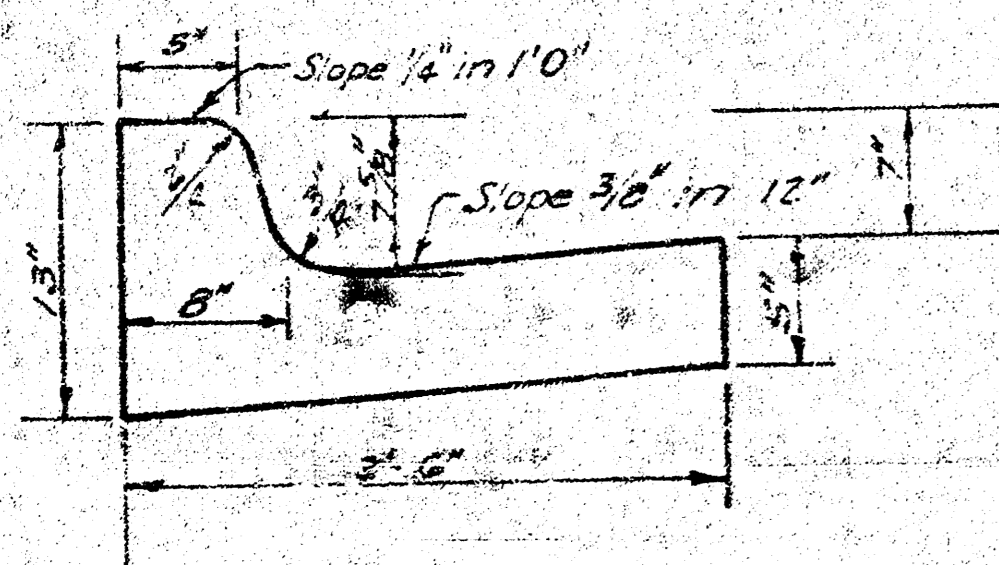
35' ASPHALTIC CONCRETE PAVEMENT WITH BITUMINOUS BASE

A TACK COAT OF EMULSIFIED ASPHALT (SS-1H) SHALL BE APPLIED AT AN APPROXIMATE RATE 0.05 GALLONS PER SQ YD BETWEEN LIFTS OF ASPHALTIC MATERIALS WHEN ORDERED BY THE ENGINEER. TACK COAT WILL NOT BE PAID FOR DIRECTLY AND SHALL BE CONSIDERED AS SUBSIDIARY TO PRICE BID FOR ASPHALTIC PAVEMENT.

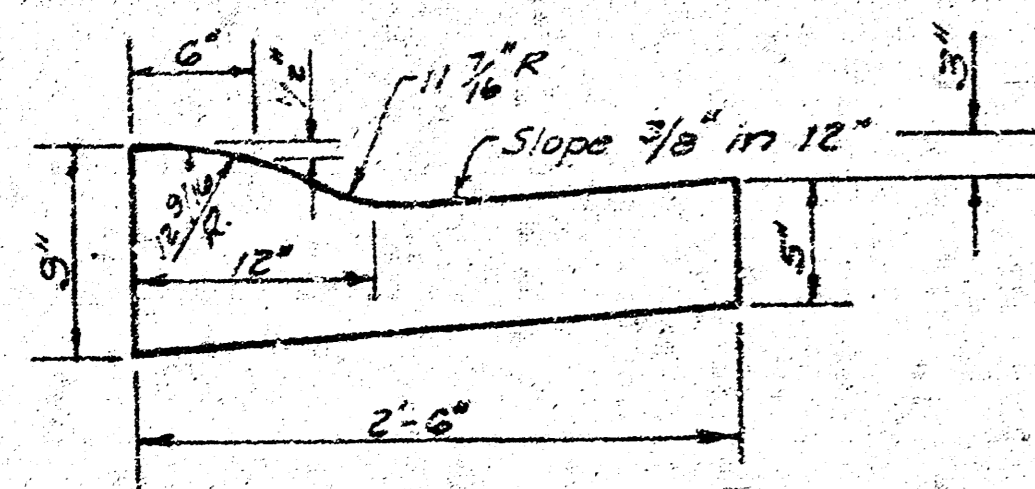
BITUMINOUS BASE AND ASPHALTIC CONCRETE WEARING SURFACE SHALL BE PLACED WITH A LAYDOWN MACHINE HAVING AUTOMATIC ELECTRONIC CONTROLS FOR CROWN AND GRADE. CONSTRUCTION JOINTS IN EACH LIFT SHALL BE STAGGERED A MINIMUM DISTANCE OF 1' WITH JOINTS IN PRECEDING LIFTS AND PLACED SUCH THAT A JOINT WILL BE CONSTRUCTED ON THE CENTERLINE IN THE TOP LIFT.

*The A.C. Pavement between the comb curb & gutter shall be paid as Sq.Yds. 3" A.C. Pavement (6" Bituminous Base).
 The Bituminous Base under the comb curb & gutter shall be paid as Sq.Yds. 3" Bituminous Base.*

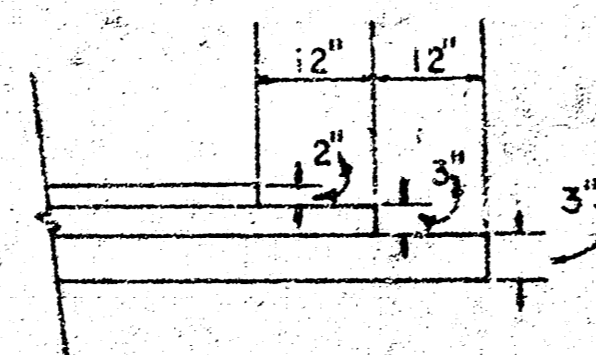
COMBINED CURB & GUTTER



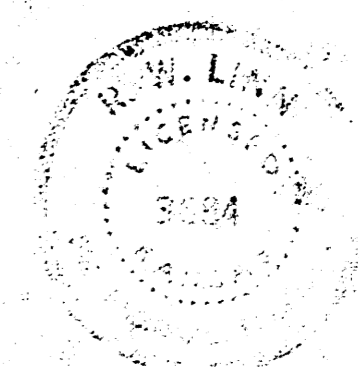
ROLL TYPE CURB & GUTTER



DETAIL OF TRANSVERSE CONSTRUCTION JOINTS



TRANSVERSE CONSTRUCTION JOINTS SHALL BE CONSTRUCTED IN FLEXIBLE BASE PAVEMENTS AT LOCATIONS WHERE PAVEMENT TEMPORARILY ENDS TO FACILITATE FUTURE PAVEMENT CONSTRUCTION AS SHOWN BY DETAIL. THE COST OF CONSTRUCTING THE TRANSVERSE CONSTRUCTION JOINTS SHALL NOT BE MEASURED OR PAID FOR DIRECTLY BUT SHALL BE INCLUDED IN THE BID PRICE FOR SQUARE YARDS OF ASPHALTIC CONCRETE PAVEMENT.



CITY OF WICHITA KANSAS

DEPARTMENT of PUBLIC WORKS - Engineering
 Division

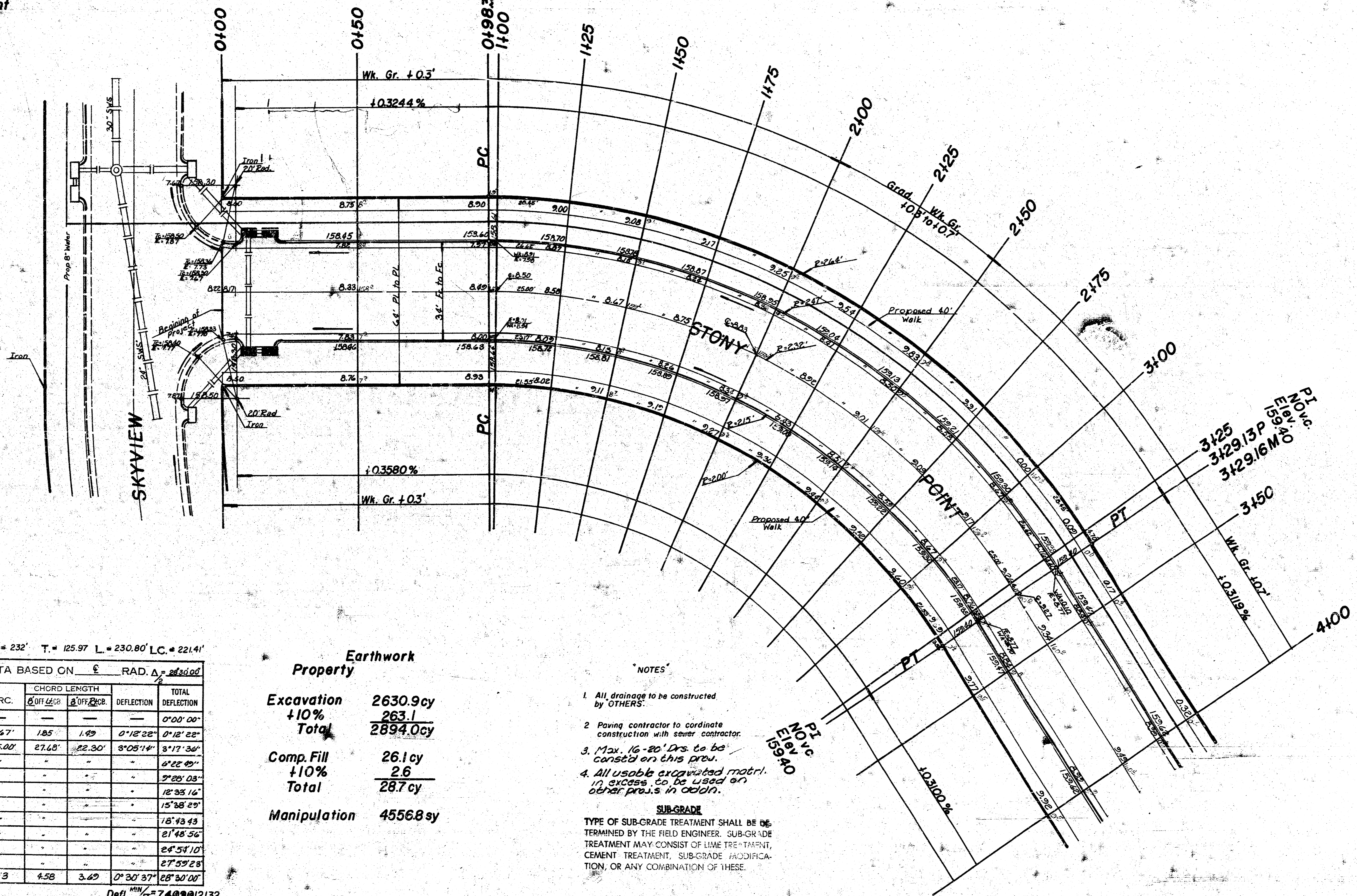
R. W. LINN CITY ENGINEER

DATE _____ Proj No. 472-76-245-80513-000-000-001

1/6

BM.157.04 RR Spike N. fc. of PP. approx. 200' S. and 100' W. NW. cor. Nantucket and Lark
 BM.163.92 Top of metal post approx. 100' W and 120' N of NW cor. Skyview & 17th
 & is C of Stony Point

Survey
 Prepared
 Checked



$\Delta = 5700'00'' R = 232' \quad T = 125.97' \quad L = 230.80' \quad LC = 221.41'$

CURVE DATA BASED ON $\Delta = 2830'00''$ RAD. $\Delta = 2830'00''$

STA.	ARC.	CHORD LENGTH		DEFLECTION	TOTAL DEFLECTION
		CHORD LENGTH	DEFLECTION		
0+98.83	-	-	-	-	0°00'00"
1+00	1.47'	1.85'	1.99'	0°18'22"	0°18'22"
1+25	25.00'	27.45'	22.30'	3°05'14"	3°17'36"
1+50	"	"	"	"	0°22'40"
1+75	"	"	"	"	2°20'03"
2+00	"	"	"	"	12°33'16"
2+25	"	"	"	"	15°38'29"
2+50	"	"	"	"	18°43'43"
2+75	"	"	"	"	21°48'56"
3+00	"	"	"	"	24°53'10"
3+25	"	"	"	"	27°57'23"
3+2213	4/3	4.58	3.69	0°30'37"	28°30'00"

Defl. $\frac{1}{100} = 7.409012132$

Earthwork Property

Excavation	2630.9cy
+10%	263.1
Total	2894.0cy
Comp. Fill	26.1cy
+10%	2.6
Total	28.7cy
Manipulation	4556.8sy

NOTES

- All drainage to be constructed by OTHERS.
- Paving contractor to coordinate construction with sewer contractor.
- Max. 16-20' Drs. to be considered on this plan.
- All usable excavated material in excess to be used on other projects in chain.

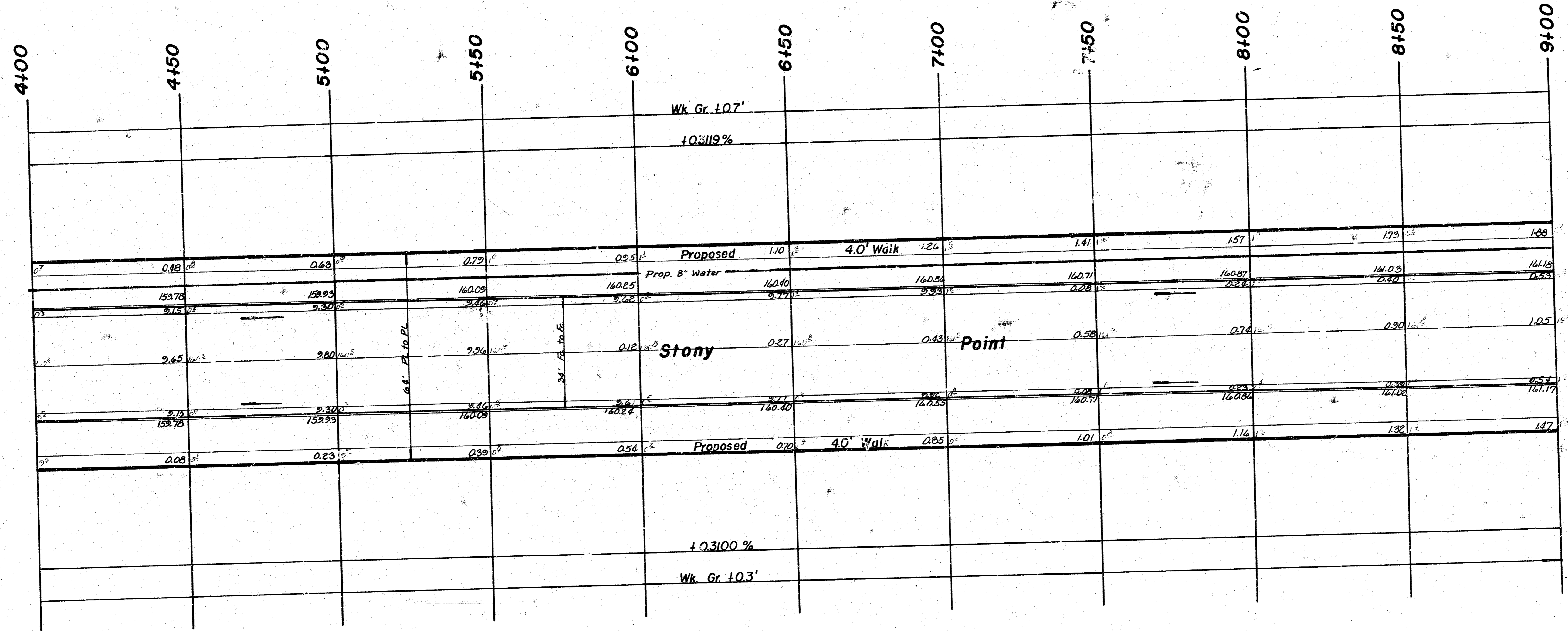
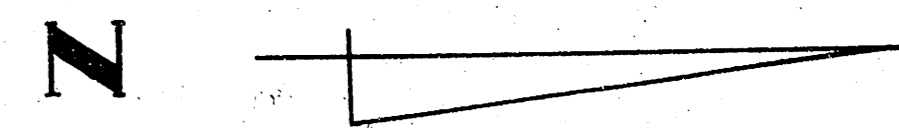
SUB-GRADE
 TYPE OF SUB-GRADE TREATMENT SHALL BE DETERMINED BY THE FIELD ENGINEER. SUB-GRADE TREATMENT MAY CONSIST OF LIME TREATMENT, CEMENT TREATMENT, SUB-GRADE MODIFICATION, OR ANY COMBINATION OF THESE.

NOTE TO FIELD ENGINEER & CONTRACTOR
 Grade parking and clear right-of-way for proposed sidewalk. Compact fill in sidewalk area. TO BE CONSTRUCTED BY "OTHERS".

STONY POINT
 from WL Skyview to SL 17th st.
 Proj No. DAKS577028
 472-76-245-80513-000-000-001

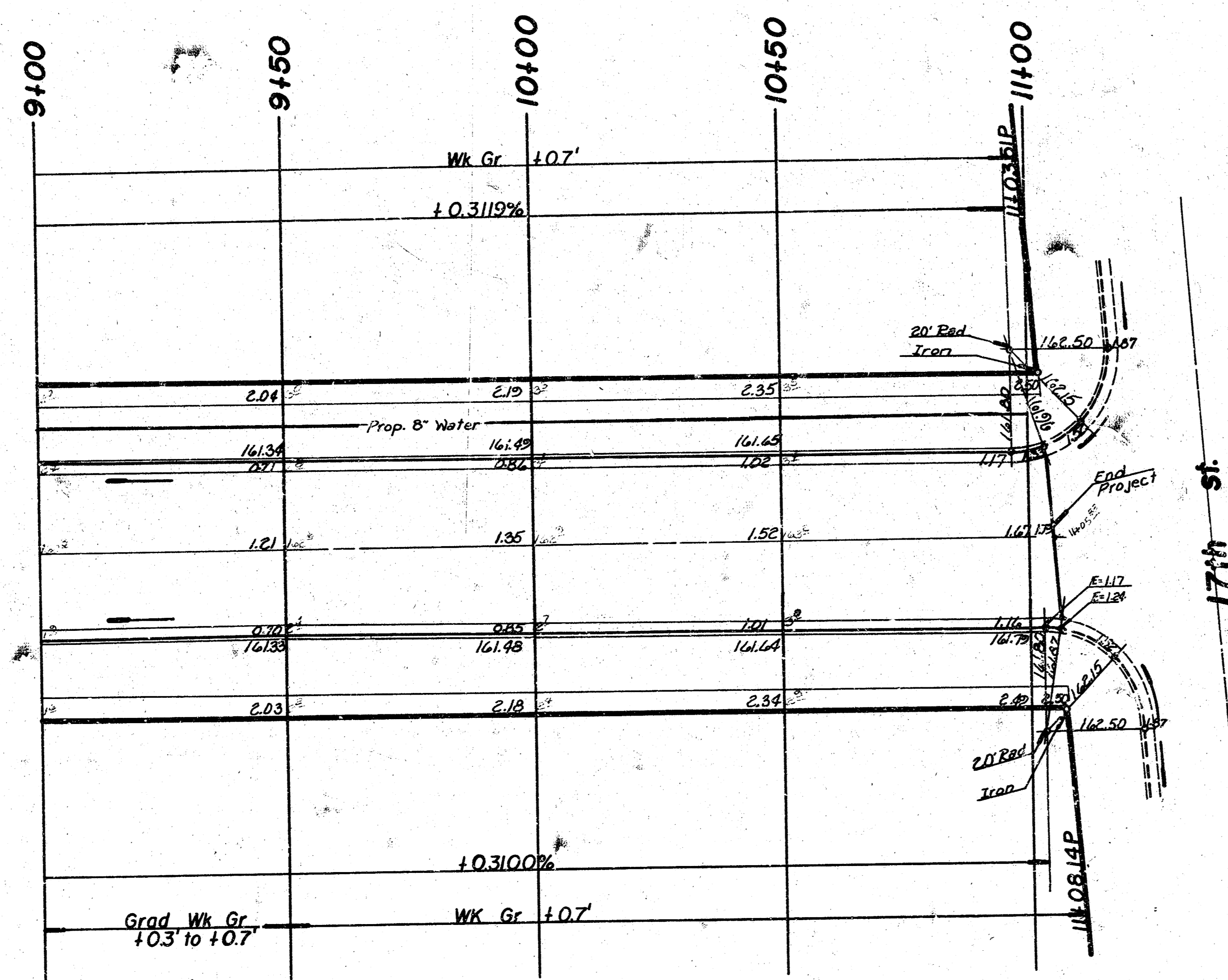
Survey
 Plans
 Exc
 Checked

Scale 1" = 20'



STONY POINT
 from WL Skyview to SL 17th st.
 Proj. No. DAKS 577028
 472-76-245-80513-000-000-001

SURVY Armour
 Plot Planning
 Exc.
 Checked



N
 Scale 1"=20'

STONY POINT
 from WL Skyview to SL 17th st.
 Proj. No. DAKS577028
 472-76-245-80513-000-000-001