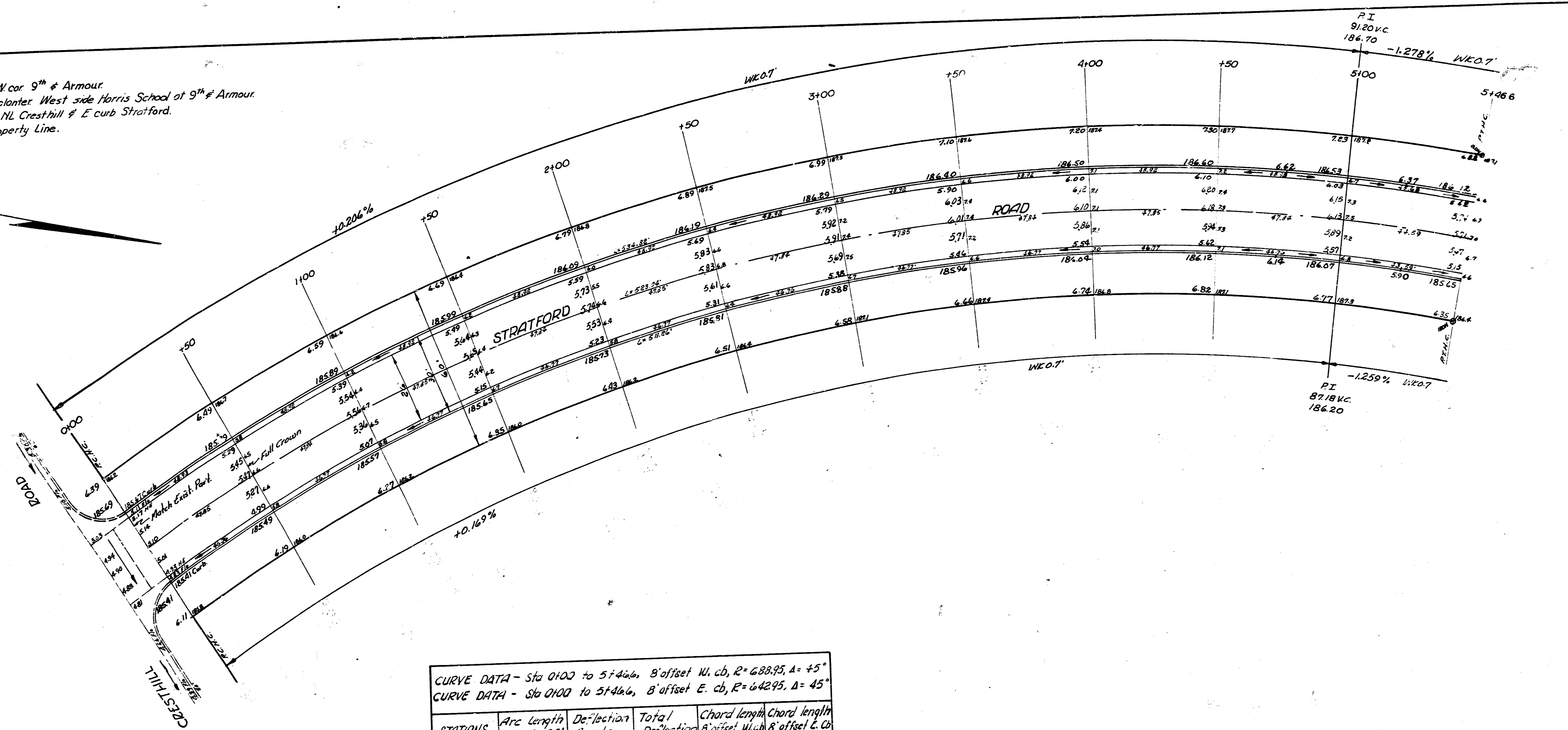


BM 177.98 Standard SW cor 9th & Armour.
 BM 185.05 SW cor of S planter West side Harris School at 9th & Armour.
 F.M. 185.43 "R" in Ritchie N.E. Cresthill & E curb Stratford.
 Stationing on West Property Line.



Survey by
 Paul Greene
 Checked by
 B. E. Smith

CURVE DATA - Sta 0+00 to 5+46.6, 8' offset W. cb, R=688.95, Δ= 45°
 CURVE DATA - Sta 0+00 to 5+46.6, 8' offset E. cb, R=642.95, Δ= 45°

STATIONS	Arc Length E=672.95	Deflection Angle	Total Deflection	Chord length 8' offset W. cb	Chord length 8' offset E. cb
0+00					
+50	500'	2°-03'-29"	2°-03'-29"	49.48	46.17
1+00	500'	2°-03'-29"	4°-06'-58"	49.48	46.17
1+50	500'	2°-03'-29"	6°-10'-27"	49.48	46.17
2+00	500'	2°-03'-29"	8°-13'-56"	49.48	46.17
2+50	500'	2°-03'-29"	10°-17'-25"	49.48	46.17
3+00	500'	2°-03'-29"	12°-20'-54"	49.48	46.17
3+50	500'	2°-03'-29"	14°-24'-23"	49.48	46.17
4+00	500'	2°-03'-29"	16°-27'-52"	49.48	46.17
4+50	500'	2°-03'-29"	18°-31'-21"	49.48	46.17
5+00	500'	2°-03'-29"	20°-34'-50"	49.48	46.17
+546.6	46.6	1°-55'-06"	22°-29'-56"	46.12	43.04

STRATFORD ROAD
 N.E. CRESTHILL TO SE NINTH
 26-2-30 A. C.
 CITY OF WICHITA, KANSAS
 B. E. SMITH CITY ENGINEER
 OCT. 1957 PROJ. NO. C-4-331



