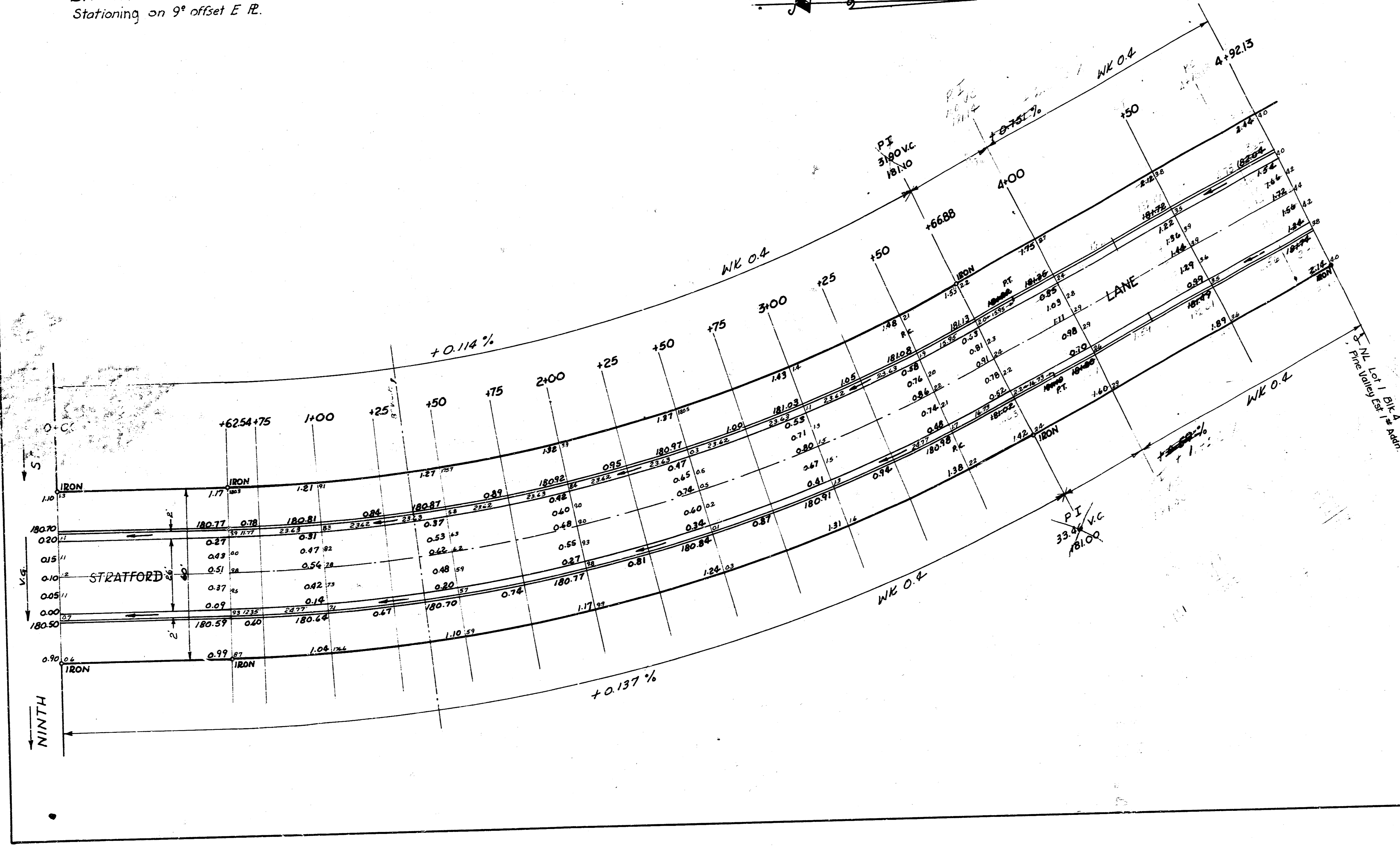
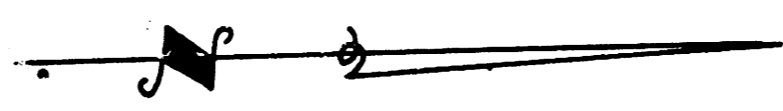


BM = 177.98 Standard SW cor. 9th & Armour.
 Stationing on 9° offset E.R.



CURVE DATA: 9° offset W of E. Prop. Line.
 R = 655.0' Δ = 26° 37' 20" Defl. = 26242/H arc.

STATION	Deflection Angle	Total Deflection	Chord Length 6' offset Ecb.	Chord Length 6' offset Web.
0+62.54				
+75	0° 32' 42"	0° 32' 42"	12.44	11.65
1+00	1° 05' 36"	1° 38' 18"	24.99	22.99
+25	1° 05' 36"	2° 43' 54"	24.99	22.99
+50	1° 05' 36"	3° 49' 30"	24.99	22.99
+75	1° 05' 36"	4° 55' 06"	24.99	22.99
2+00	1° 05' 36"	6° 00' 42"	24.99	22.99
+25	1° 05' 36"	7° 06' 18"	24.99	22.99
+50	1° 05' 36"	8° 11' 54"	24.99	22.99
+75	1° 05' 36"	9° 17' 30"	24.99	22.99
3+00	1° 05' 36"	10° 23' 06"	24.99	22.99
+25	1° 05' 36"	11° 28' 42"	24.99	22.99
+50	1° 05' 36"	12° 34' 18"	24.99	22.99
+66.88	0° 44' 18"	13° 18' 36"	16.88	15.80

STRATFORD LANE
 NL 9th - NL Lot 1 Blk 4 Pine Valley Est. 1st Addn.
 26-2-30 AC.
 CITY OF WICHITA, KANSAS
 D.E. SMITH CITY ENGINEER
 MAY 1954 PROJ NO C16-40

