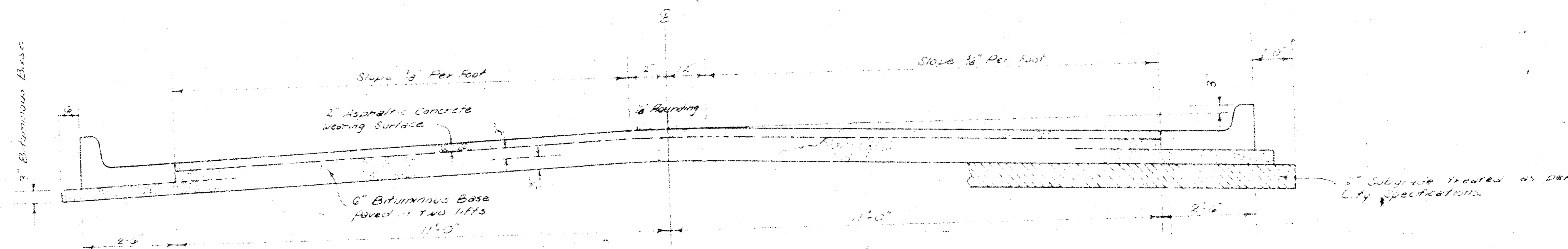


SUNCREST AVE.
W.L. GLENHURST TO
W.L. NORTHWEST PARKWAY

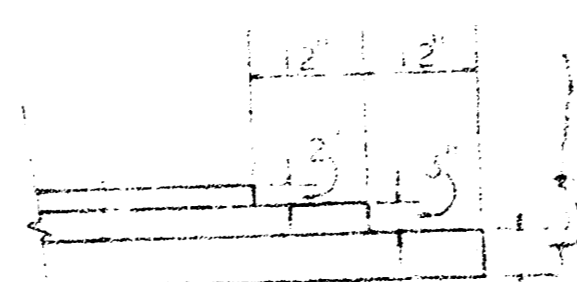


TYPICAL SECTION

27' ASPHALTIC CONCRETE PAVEMENT WITH BITUMINOUS BASE

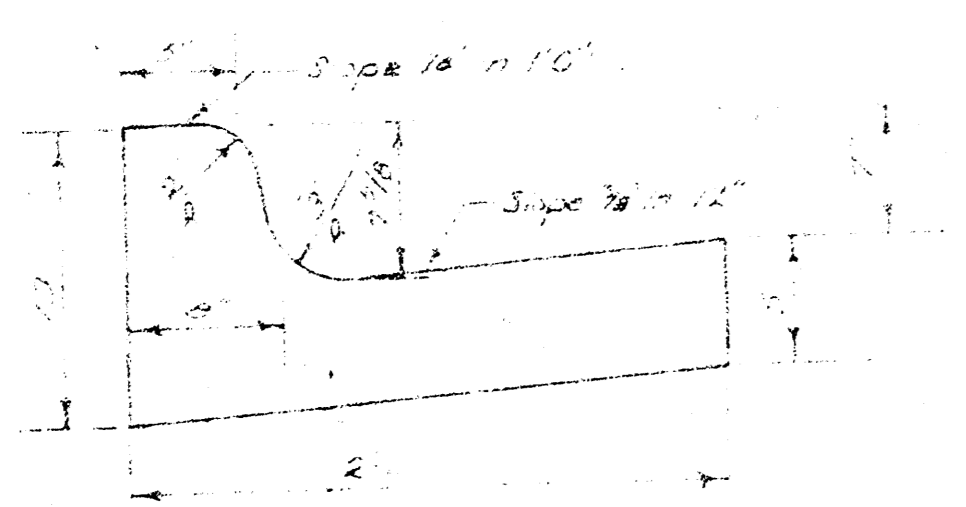
A TACK COAT OF EMULSIFIED ASPHALT (SS-1H) SHALL BE APPLIED AT AN APPROXIMATE RATE OF 0.05 GALLONS PER SQ YD. BETWEEN LIFTS OF ASPHALTIC MATERIALS WHEN ORDERED BY THE ENGINEER. TACK COAT WILL NOT BE PAID FOR DIRECTLY AND SHALL BE CONSIDERED AS SUBSIDIARY TO PRICE BID FOR ASPHALTIC PAVEMENT. BITUMINOUS BASE AND ASPHALTIC CONCRETE WEARING SURFACE SHALL BE PLACED WITH A LAYDOWN MACHINE HAVING AUTOMATIC ELECTRONIC CONTROLS FOR CROWN AND GRADE. CONSTRUCTION JOINTS IN EACH LIFT SHALL BE STAGGERED A MINIMUM DISTANCE OF 1' WITH JOINTS IN PRECEDING LIFTS AND SUCH THAT A JOINT WILL BE CONSTRUCTED ON THE PAVEMENT CENTERLINE IN THE TOP LIFT.

DETAIL OF TRANSVERSE CONSTRUCTION JOINTS

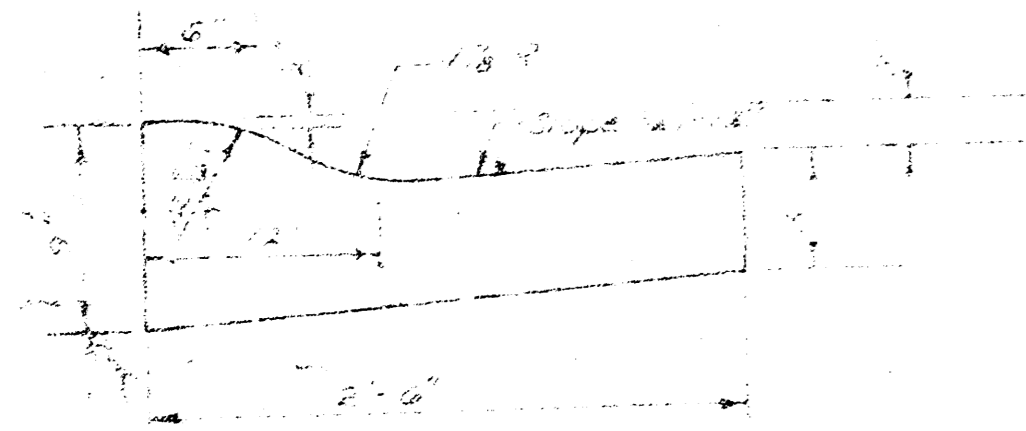


TRANSVERSE CONSTRUCTION JOINTS SHALL BE CONSTRUCTED IN FLEXIBLE BASE PAVEMENTS AT LOCATIONS WHERE PAVEMENT TEMPORARILY ENDS TO FACILITATE FUTURE PAVEMENT CONSTRUCTION AS SHOWN BY DETAIL. THE COST OF CONSTRUCTING THE TRANSVERSE CONSTRUCTION JOINTS SHALL NOT BE MEASURED OR PAID FOR DIRECTLY BUT SHALL BE INCLUDED IN THE BID PRICE FOR SQUARE YARDS OF ASPHALTIC CONCRETE PAVEMENT.

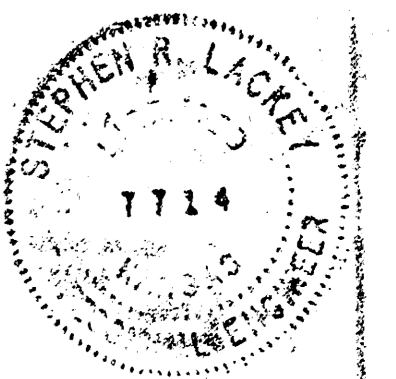
COMBINED CURB & GUTTER



ROLL TYPE CURB & GUTTER



The A.C. pavement between the Comb. Curb & Gutter shall be paid as 24' 6" A.C. Pavement (3" Bituminous Base) The Bituminous Base under the Comb. Curb & Gutter shall be paid as 24' 6" 3" Bituminous Base.



CITY OF WICHITA, KANSAS

DEPARTMENT OF PUBLIC WORKS - ENGINEERING

R. W. LINN CITY ENGINEER

DATE _____

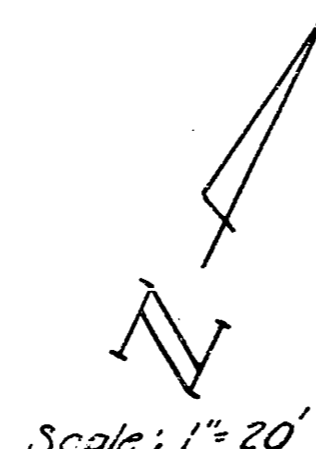
PROJ. NO. 472 76 245 80788 000 000 001

1/4

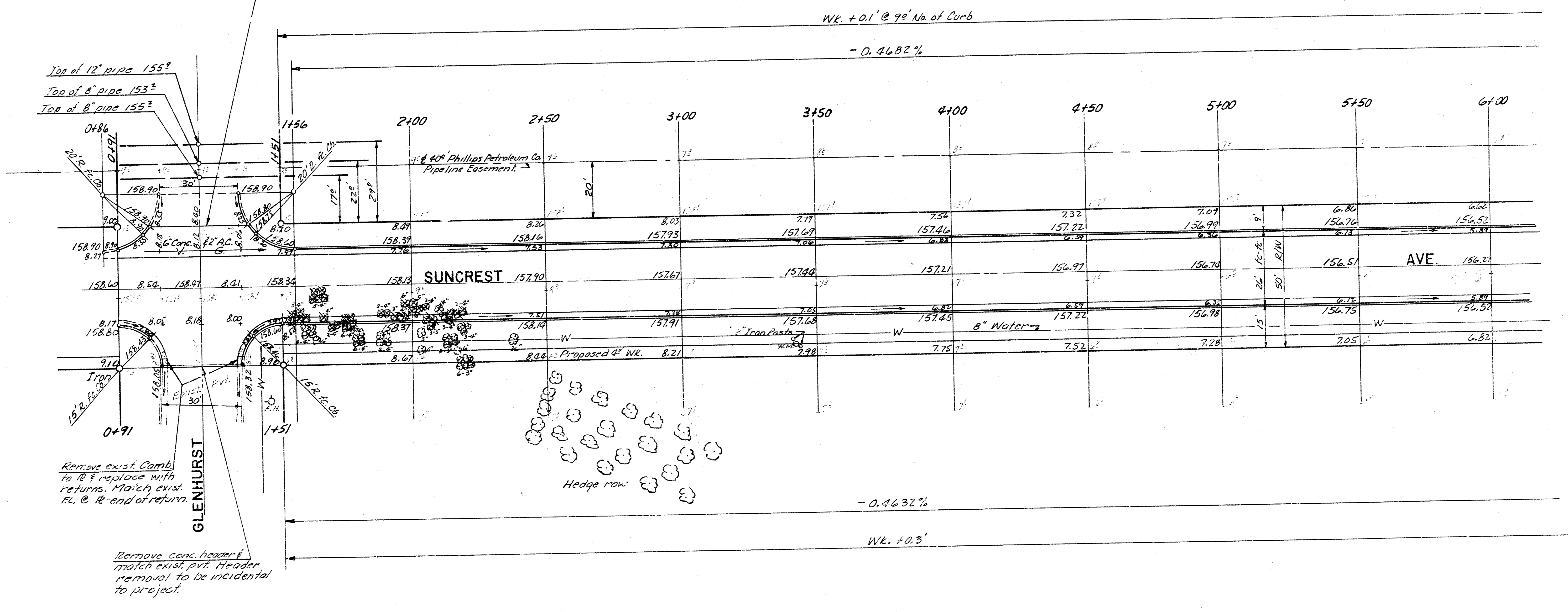
FILMED FROM THE BEST AVAILABLE COPY.....

B.M. 156.187 City Std. @ Woodchuck f 13th
 B.M. 160.94 N.E. Cor. Conc. Porch, Ho. # 1543 Glenhurst

Base line extends from a point 50' N. of SW cor. Suncrest,
 E. along a line 50' N. of S.L. Suncrest to Northwest Parkway.



No grading or earthwork, if no
 construction, north of this line.



Survey: T.C.O.
 Plans: 24, 25, 26
 City: Wichita

SUBGRADE
 TYPE OF CURB AND GUTTER SHALL BE DE-
 TERMINED BY THE ENGINEER. SUBGRADE
 SHALL BE TO BE SLOPED TO PROVIDE PROPER
 DRAINAGE. ALL SLOPES SHALL BE MODIFIED
 TO PROVIDE PROPER DRAINAGE. MODIFICA-
 TION, OR ANY COMBINATION OF THESE.

NOTE: 15 drives can be constructed on
 this project. (Max.) 15-20' DR.

NOTE: Trees to be removed are marked thus \otimes except that
 any tree marked for removal, which in the opinion of the
 Engineer can be saved, shall be spared.

Earthwork Totals

Excavation		City	
Property	1536.0 C.Y.	City	176.5 C.Y.
110%	1689.6	+10%	194.2 C.Y.
	1744.6		

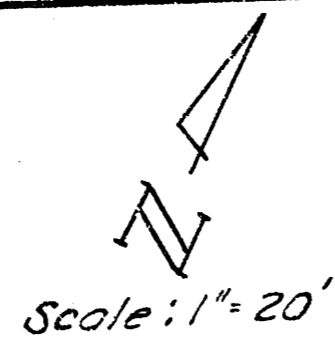
NOTE: Excess dirt on this project to be used
 for fill as required on Holland Lane project.
 Cost to be incidental, to earthwork on Holland
 Lane.

Total Manipulation 4657 S.Y.

2/8

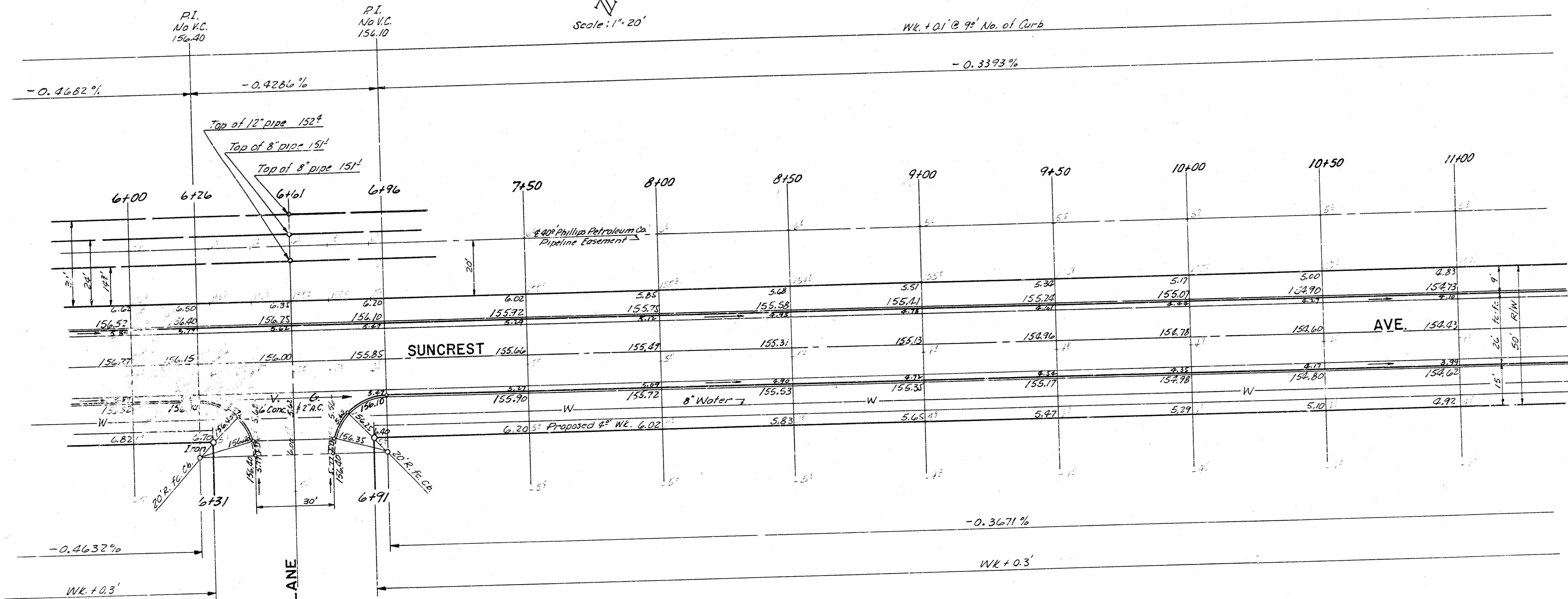
SUNCREST AVE.
 W.L. GLENHURST TO
 W.L. NORTHWEST PARKWAY
 CITY OF WICHITA, KANSAS
 R.W. LINN CITY ENGINEER
 DATE _____
 PROJ. NO. 472 76 245 80788 000 000 001 2/4

**FILMED FROM THE BEST
 AVAILABLE COPY.....**



Scale: 1" = 20'

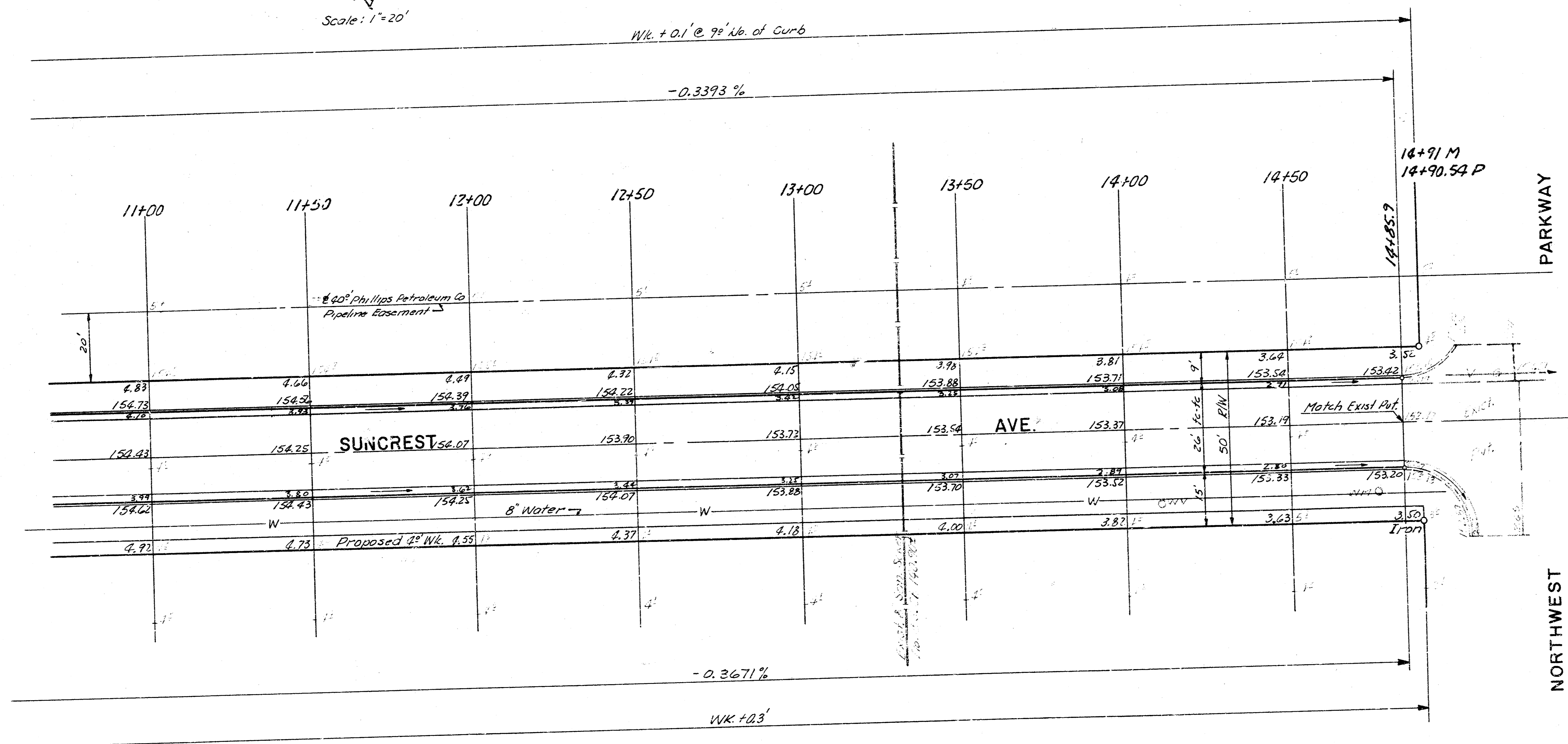
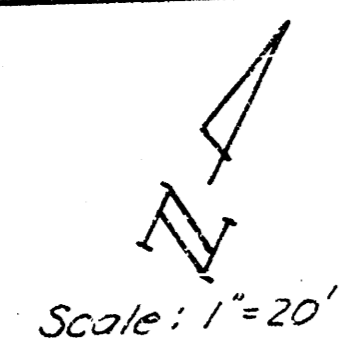
Wk. + 0.1' @ 9" No. of Curb



3/8

SUNCREST AVE.
 W.L. GLENHURST TO
 W.L. NORTHWEST PARKWAY
 CITY OF WICHITA, KANSAS
 R.W. LINN CITY ENGINEER
 DATE
 PROJ. NO. 472 76 245 80788 000 000 001 3/4

FILMED FROM THE BEST AVAILABLE COPY.....



4/8

SUNCREST AVE.
W.L. GLENHURST TO
W.L. NORTHWEST PARKWAY
CITY OF WICHITA, KANSAS
R. W. LINN CITY ENGINEER
DATE
PROJ. NO. 472 76 245 80788 000 000 001 4/4

FILMED FROM THE BEST
AVAILABLE COPY.....