

# STREET IMPROVEMENTS FOR NORTH HALF SUNCREST

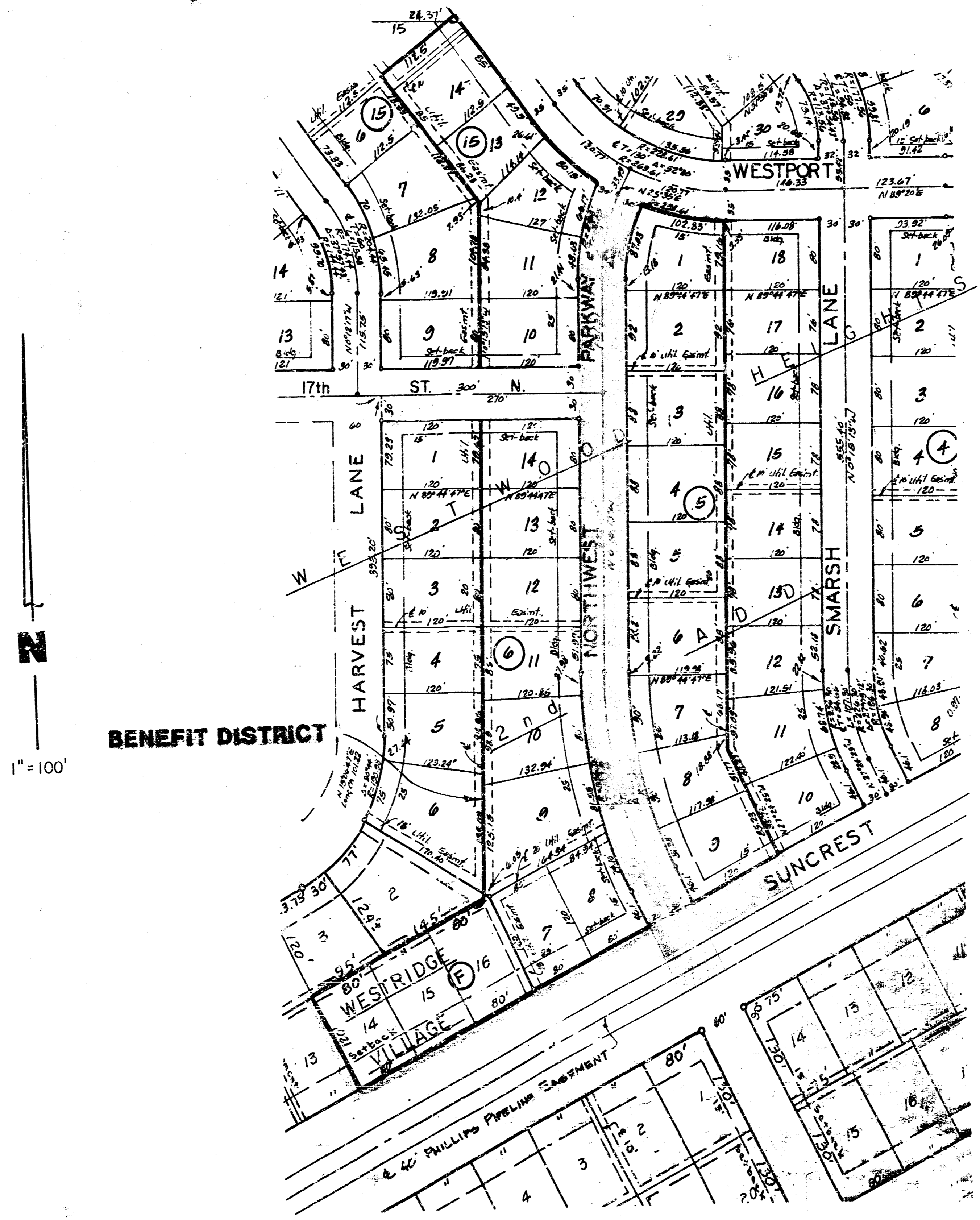
E'LY LINE NORTHWEST PKWY. to W'LY LINE LOT 10, BLK. 5, WESTWOOD HEIGHTS 2nd ADDITION

# NORTHWEST PARKWAY

N'LY LINE EXISTING PVMT. ON SUNCREST to S.L. WESTPORT

PROJECT NO.

**472-76-245-81299-000-000-001**



**GENERAL NOTES**

The contractor shall be responsible for preserving property irons. The contractor shall be required to re-establish any property irons which are damaged or destroyed by his construction operations. Such irons shall be re-established by a licensed land surveyor or a professional engineer in accordance with state laws.

The contractor shall contact Phillips Pipeline Co. (838-3411) prior to construction, for a verification in the field of the location of the pipeline lying in Suncrest.

The contractor shall contact the necessary utility companies for verifications of their underground lines in the field.

**CITY OF WICHITA, KANSAS**  
**MIKE E. LINDEBAK** ——— **CITY ENGINEER**



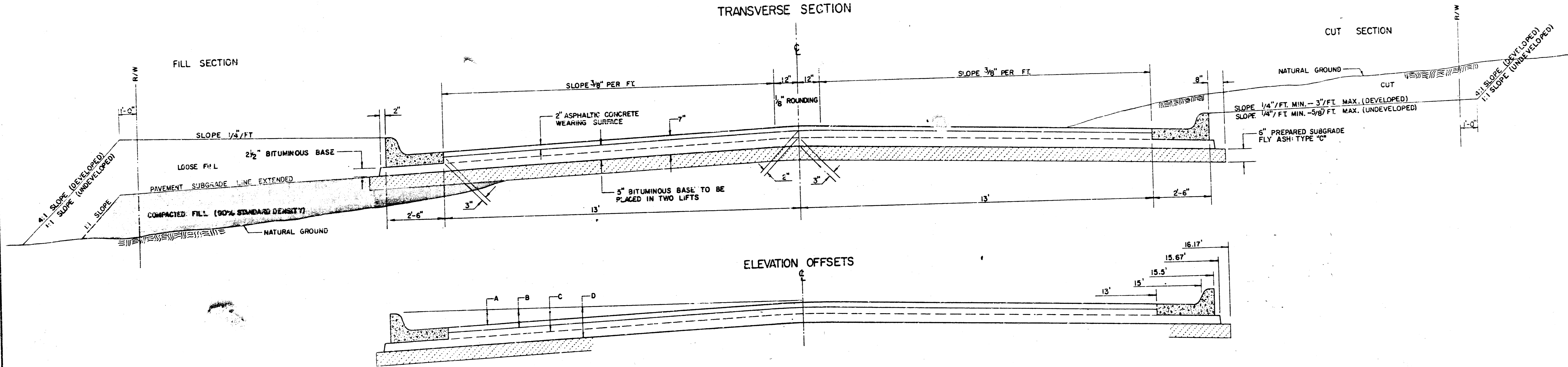
JUNE 1984

**BAUGHMAN COMPANY, P.A.**  
SURVEYING & ENGINEERING  
316/262-7271 • 330 LAURA • WICHITA, KANSAS 67211

1/10

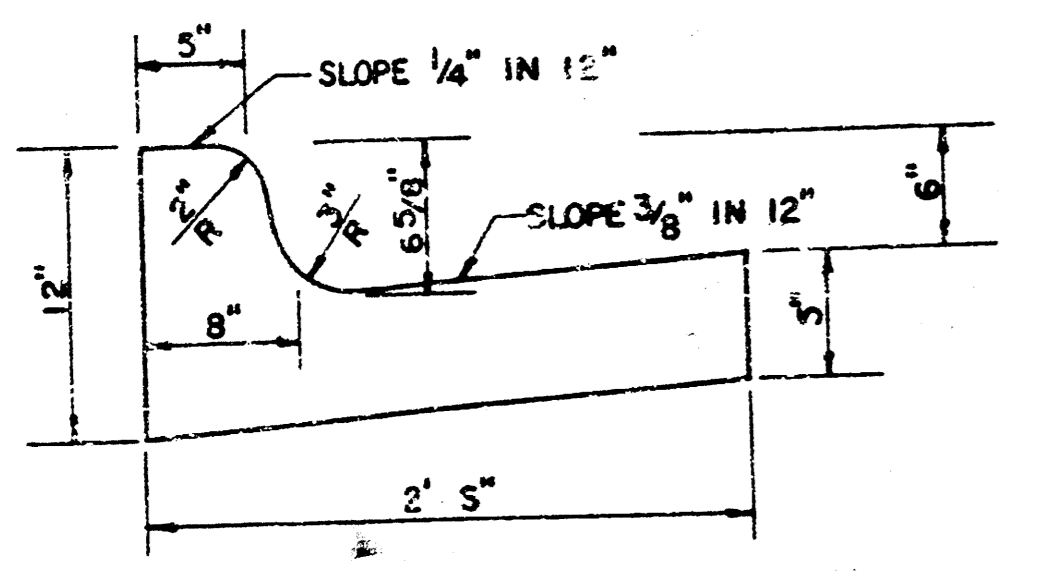
# TYPICAL 3' PAVEMENT DETAILS

## TRANSVERSE SECTION



	DISTANCE FROM CENTERLINE (LT. & RT.)											
	0'	2'	4'	6'	7.5'	10'	12'	13'	15'	15.5'	15.67'	16.17'
A: TOP OF CURBS TO TOP OF SURFACE LIFT	0.10	0.14	0.21	0.27	0.32	0.39	0.46	0.49	—	—	—	—
B: TOP OF CURBS TO TOP OF UPPER BASE LIFT	0.27	0.31	0.38	0.44	0.49	0.56	0.63	0.66	—	—	—	—
C: TOP OF CURBS TO TOP OF LOWER BASE LIFT	0.44	0.49	0.57	0.64	0.70	0.79	0.87	0.90	0.98	1.00	1.00	—
D: TOP OF CURBS TO TOP OF SUBGRADE	0.69	0.73	0.80	0.87	0.93	1.01	1.08	1.12	1.19	1.21	1.21	1.23

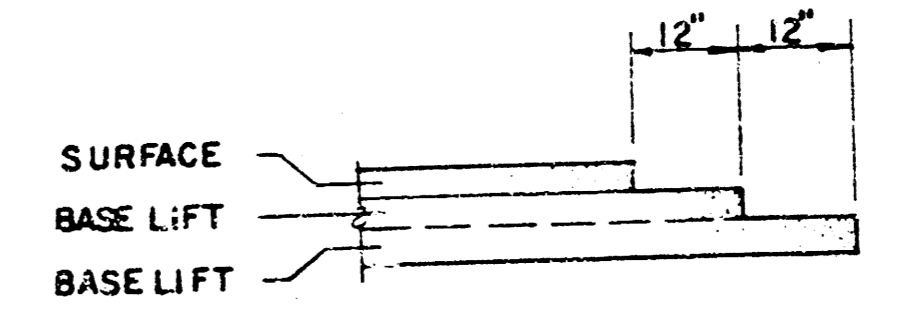
## COMBINED CURB & GUTTER



## GENERAL NOTES

- 1) THE ASPHALTIC CONCRETE PAVEMENT BETWEEN THE COMBINED CURB AND GUTTER SHALL BE PAID AS SQUARE YARDS OF 7" ASPHALTIC CONCRETE (5" BITUMINOUS BASE).
- 2) THE BITUMINOUS BASE UNDER AND BEHIND THE COMBINED CURB AND GUTTER SHALL BE PAID AS SQUARE YARDS OF 2 1/2" BITUMINOUS BASE.
- 3) A TACK COAT OF EMULSIFIED ASPHALT (SC-1H OR CSS-1H) SHALL BE APPLIED AT AN APPROXIMATE RATE OF 0.05 GALLONS PER SQUARE YARD BETWEEN EACH LIFT OF ASPHALTIC MATERIAL.
- 4) BITUMINOUS BASE AND ASPHALTIC CONCRETE WEARING SURFACE SHALL BE PLACED WITH A LAYDOWN MACHINE HAVING AUTOMATIC CONTROLS FOR LINE AND GRADE.
- 5) CONSTRUCTION JOINTS IN EACH LIFT SHALL BE STAGGERED A MINIMUM DISTANCE OF ONE (1) FOOT FROM JOINTS IN PRECEDING LIFTS AND PLACED SO THAT A JOINT WILL BE CONSTRUCTED ON THE CENTERLINE OF THE TOP LIFT.
- 6) CONTRACTOR TO BID ONLY ONE SUBGRADE TREATMENT ALTERNATE WHEN ALTERNATES ARE PROVIDED IN THE PROPOSAL AND CONTRACT. THE ALTERNATE CHOSEN BY THE SUCCESSFUL BIDDER SHALL BE USED IN CONSTRUCTING THIS PROJECT.

## TRANSVERSE CONSTRUCTION JOINTS



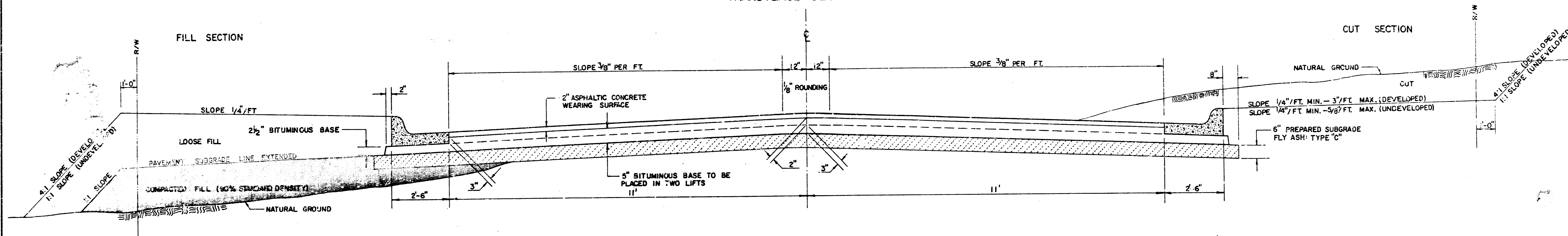
TRANSVERSE CONSTRUCTION JOINTS SHALL BE CONSTRUCTED IN FLEXIBLE BASE PAVEMENTS AT LOCATIONS WHERE PAVEMENT JOINING EXISTING FLEXIBLE BASE PAVEMENT AS SHOWN BY THE DETAIL. ALL COSTS ASSOCIATED WITH THE CONSTRUCTION OF THE TRANSVERSE JOINT SHALL BE INCLUDED IN THE BID PRICE FOR SQUARE YARDS 7" ASPHALTIC CONCRETE (5" BITUMINOUS BASE).

2/10 2/10

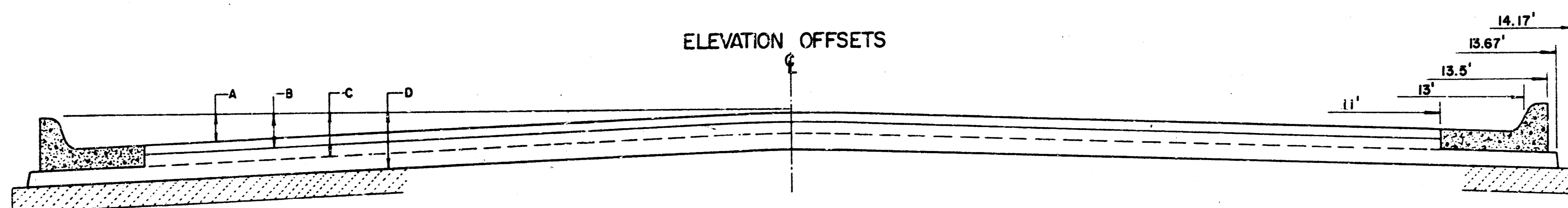
7 INCH RESIDENTIAL ASPHALTIC CONCRETE PAVEMENT WITH 5 INCH BITUMINOUS BASE  
 CITY OF WICHITA, KANSAS  
 PROJECT NUMBER  
 472-78-246-81299-000-000-001

# TYPICAL 27' PAVEMENT DETAILS

## TRANSVERSE SECTION

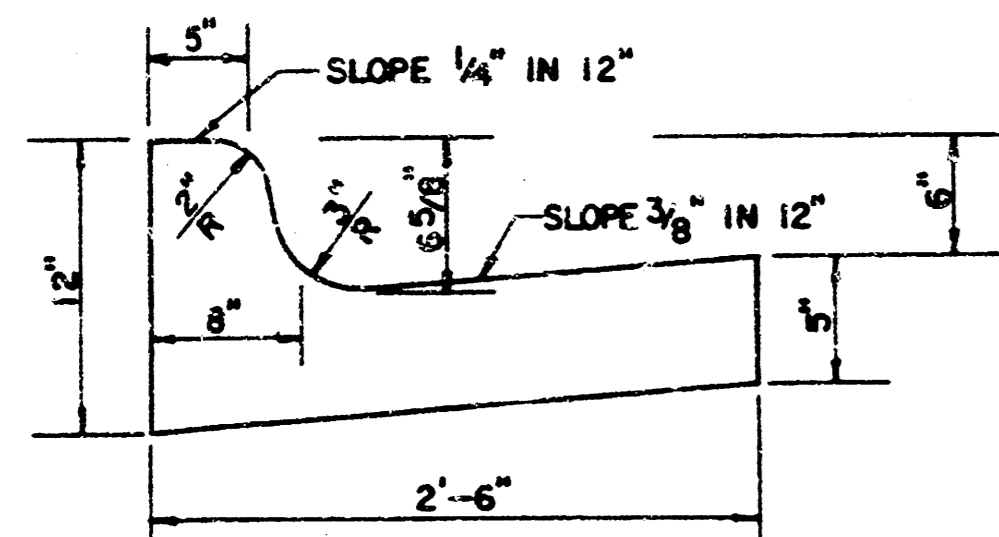


## ELEVATION OFFSETS

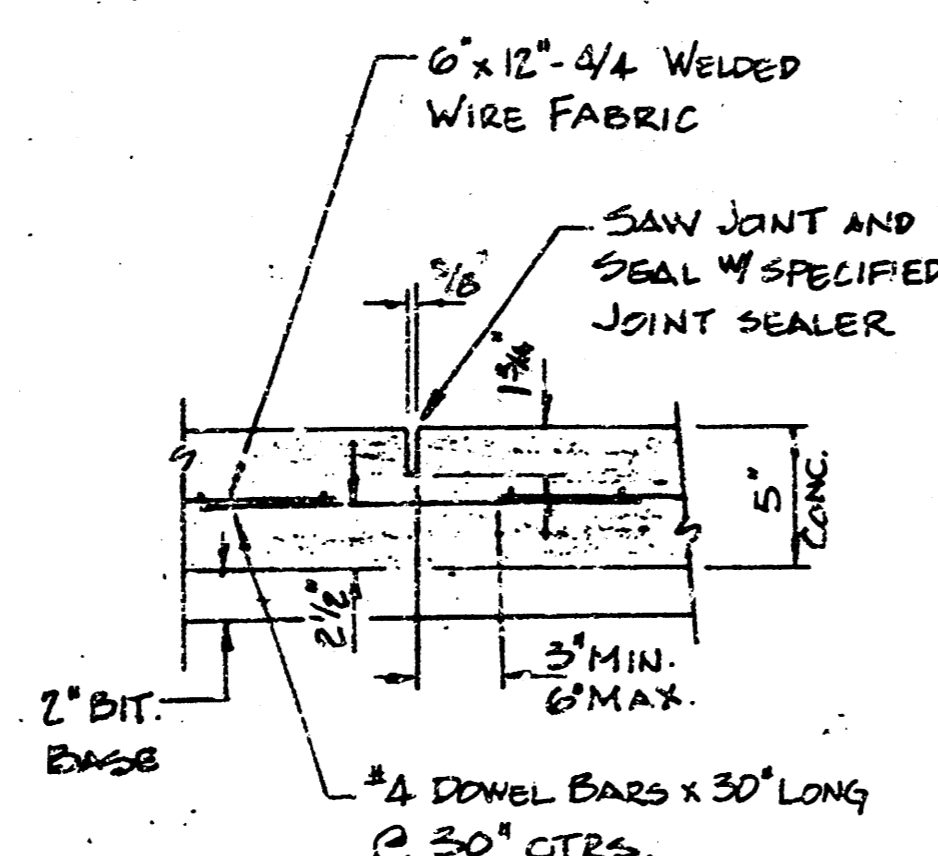


	DISTANCE FROM CENTERLINE (LT. & RT.)											
	0'	2'	4'	6'	8'	10'	11'	13'	13.5'	13.67'	14.17'	
A: TOP OF CURBS TO TOP OF SURFACE LIFT	0.17'	0.22'	0.28'	0.34'	0.40'	0.46'	0.49'	—	—	—	—	
B: TOP OF CURBS TO TOP OF UPPER BASE LIFT	0.35'	0.39'	0.45'	0.51'	0.57'	0.63'	0.66'	—	—	—	—	
C: TOP OF CURBS TO TOP OF LOWER BASE LIFT	0.52'	0.56'	0.63'	0.71'	0.78'	0.86'	0.90'	0.98'	1.00'	1.00'	—	
D: TOP OF CURBS TO TOP OF SUBGRADE	0.77'	0.81'	0.88'	0.95'	1.02'	1.09'	1.12'	1.19'	1.21'	1.21'	1.23'	

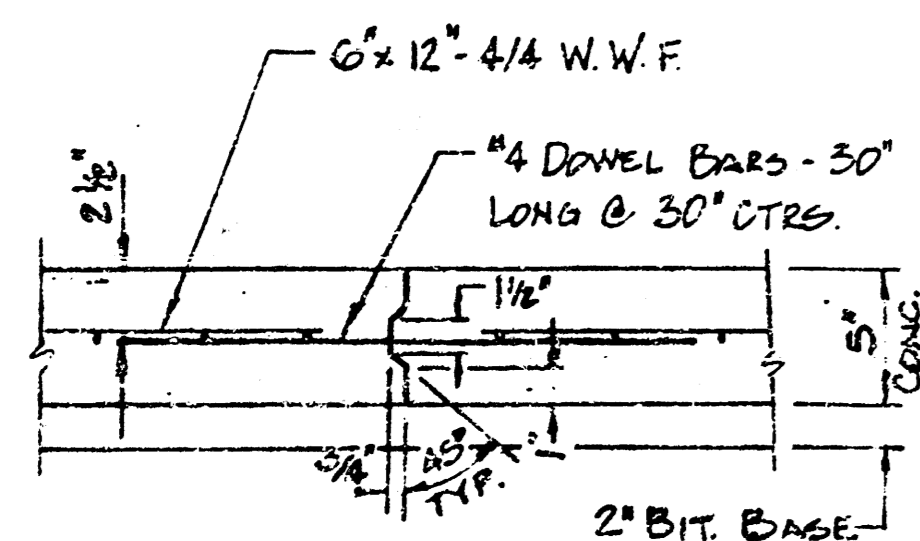
### COMBINED CURB & GUTTER



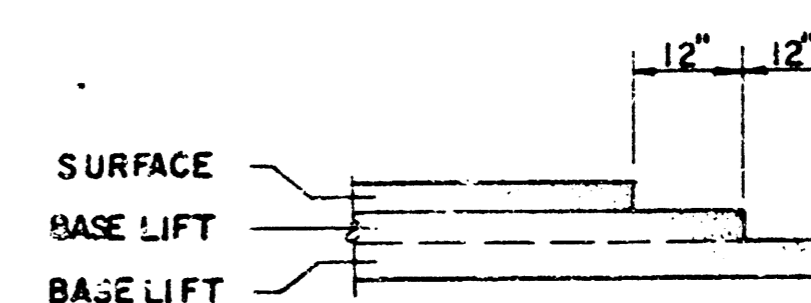
### LONGITUDINAL SAWS JOINT FOR CONCRETE VALLEY GUTTER



### LONGITUDINAL CONSTRUCTION JOINT FOR CONCRETE VALLEY GUTTER



### TRANSVERSE CONSTRUCTION JOINTS



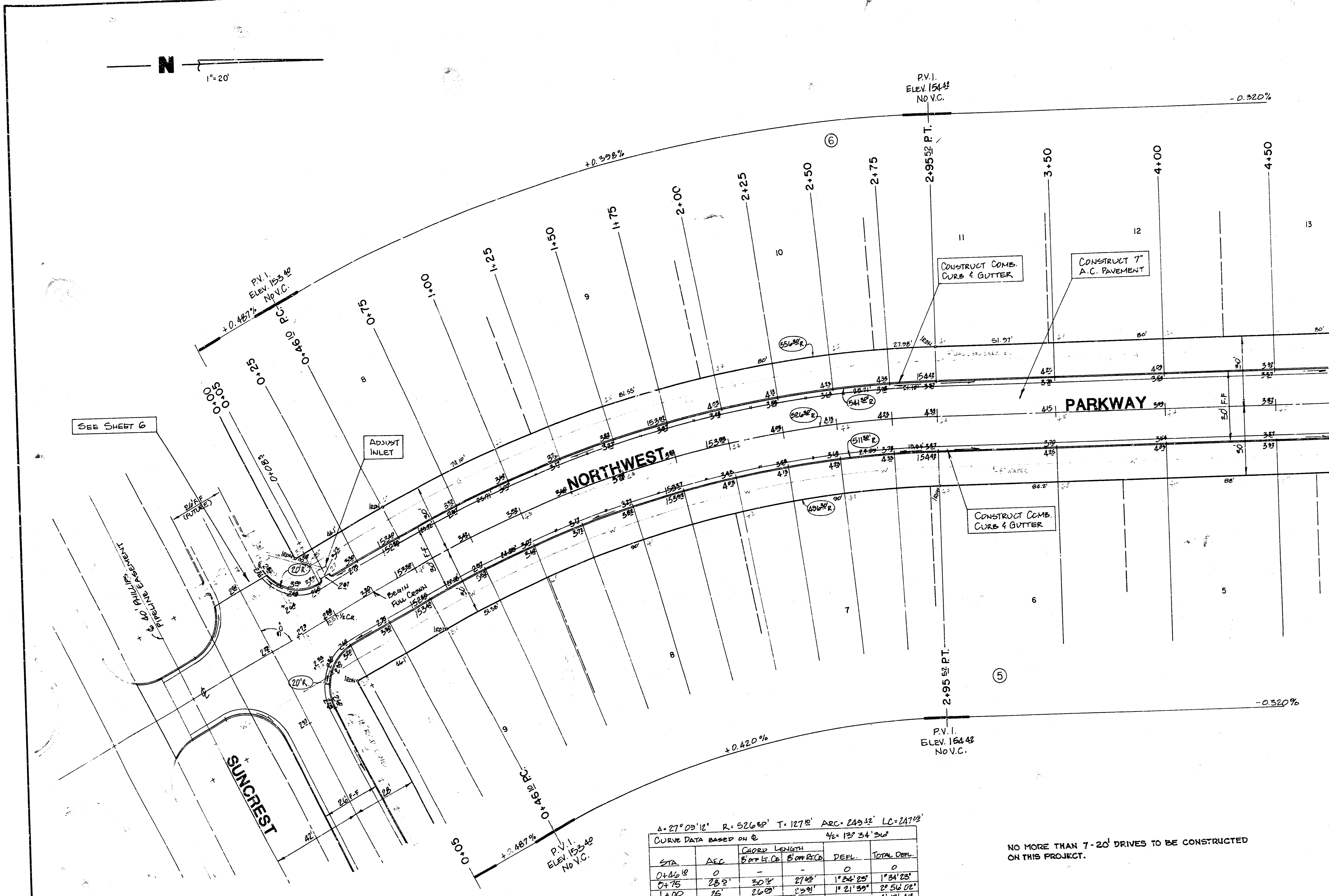
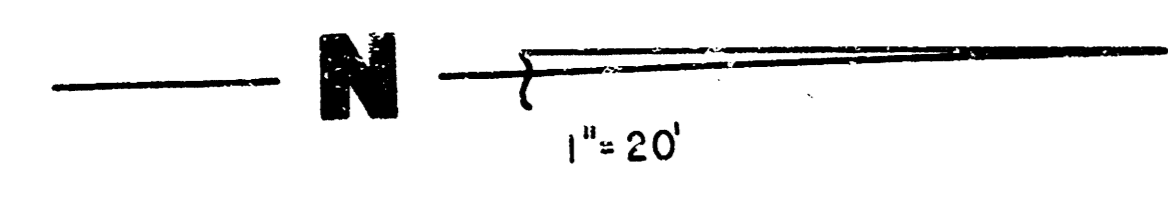
TRANSVERSE CONSTRUCTION JOINTS SHALL BE CONSTRUCTED IN FLEXIBLE BASE PAVEMENTS AT LOCATIONS WHERE PAVEMENT JOINING EXISTING FLEXIBLE BASE PAVEMENT AS SHOWN BY THE DETAIL. ALL COSTS ASSOCIATED WITH THE CONSTRUCTION OF THE TRANSVERSE JOINT SHALL BE INCLUDED IN THE BID PRICE FOR SQUARE YARDS 7" ASPHALTIC CONCRETE (5" BITUMINOUS BASE).

### GENERAL NOTES

- 1) THE ASPHALTIC CONCRETE PAVEMENT BETWEEN THE COMBINED CURB AND GUTTER SHALL BE PAID AS SQUARE YARDS OF 7" ASPHALTIC CONCRETE (5" BITUMINOUS BASE).
- 2) THE BITUMINOUS BASE UNDER AND BEHIND THE COMBINED CURB AND GUTTER SHALL BE PAID AS SQUARE YARDS OF 2 1/2" BITUMINOUS BASE.
- 3) A TACK COAT OF EMULSIFIED ASPHALT (SC-1H OR CSS-1H) SHALL BE APPLIED AT AN APPROXIMATE RATE OF 0.05 GALLONS PER SQUARE YARD BETWEEN EACH LIFT OF ASPHALTIC MATERIAL.
- 4) BITUMINOUS BASE AND ASPHALTIC CONCRETE WEARING SURFACE SHALL BE PLACED WITH A LAYDOWN MACHINE HAVING AUTOMATIC CONTROLS FOR LINE AND GRADE.
- 5) CONSTRUCTION JOINTS IN EACH LIFT SHALL BE STAGGERED A MINIMUM DISTANCE OF ONE (1) FOOT FROM JOINTS IN PRECEDING LIFTS AND PLACED SO THAT A JOINT WILL BE CONSTRUCTED ON THE CENTERLINE OF THE TOP LIFT.
- 6) CONTRACTOR TO BID ONLY ONE SUBGRADE TREATMENT ALTERNATE WHEN ALTERNATES ARE PROVIDED IN THE PROPOSAL, AND CONTRACT. THE ALTERNATE CHOSEN BY THE SUCCESSFUL BIDDER SHALL BE USED IN CONSTRUCTING THIS PROJECT.

7 INCH RESIDENTIAL ASPHALTIC CONCRETE PAVEMENT WITH 5 INCH BITUMINOUS BASE  
CITY OF WICHITA, KANSAS  
PROJECT NUMBER  
472-76-245-81299-000-000-001

BENCH MARK - TOP OF CURB, S. END OF ROWLEN AT S.E. COR. WESTPORT & NORTHWEST PARKWAY, ELEV. 154.63



SEE SHEET 6

ADJUST INLET

CONSTRUCT COMB. CURB & GUTTER

CONSTRUCT 7" A.C. PAVEMENT

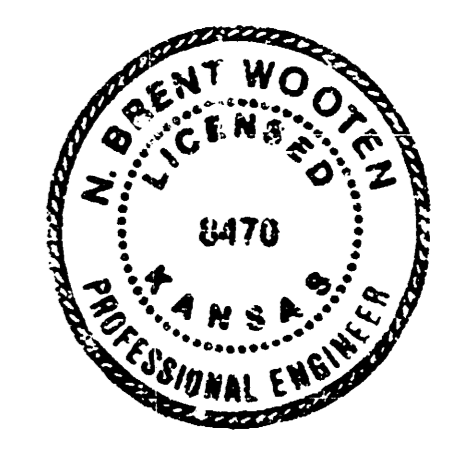
CONSTRUCT COMB. CURB & GUTTER

$\Delta = 27^{\circ}09'12''$   $R = 526.80'$   $T = 127.8'$   $ARC = 249.32'$   $LC = 247.02'$   
 CURVE DATA BASED ON  $\frac{46 \times 13'34.250''}{4}$

STA.	ARC	CHORD LENGTH	CHORD BEING	DEFL.	TOTAL DEFL.
0+00.00	0	-	-	0	0
0+75	25'	20.14'	27.43'	1°34'23"	1°34'23"
1+00	25'	26.09'	22.91'	1°21'39"	2°56'02"
1+25	25'	"	"	"	4°17'41"
1+50	25'	"	"	"	5°39'20"
1+75	25'	"	"	"	7°00'58"
2+00	25'	"	"	"	8°22'36"
2+25	25'	"	"	"	9°44'17"
2+50	25'	"	"	"	11°05'56"
2+75	25'	26.09'	23.91'	1°21'59"	12°27'55"
2+95.52	20.52'	21.42'	19.42'	1°07'01"	13°34'56"

DEFLECTION / FT. = 3.26538 MIN.

NO MORE THAN 7-20' DRIVES TO BE CONSTRUCTED ON THIS PROJECT.



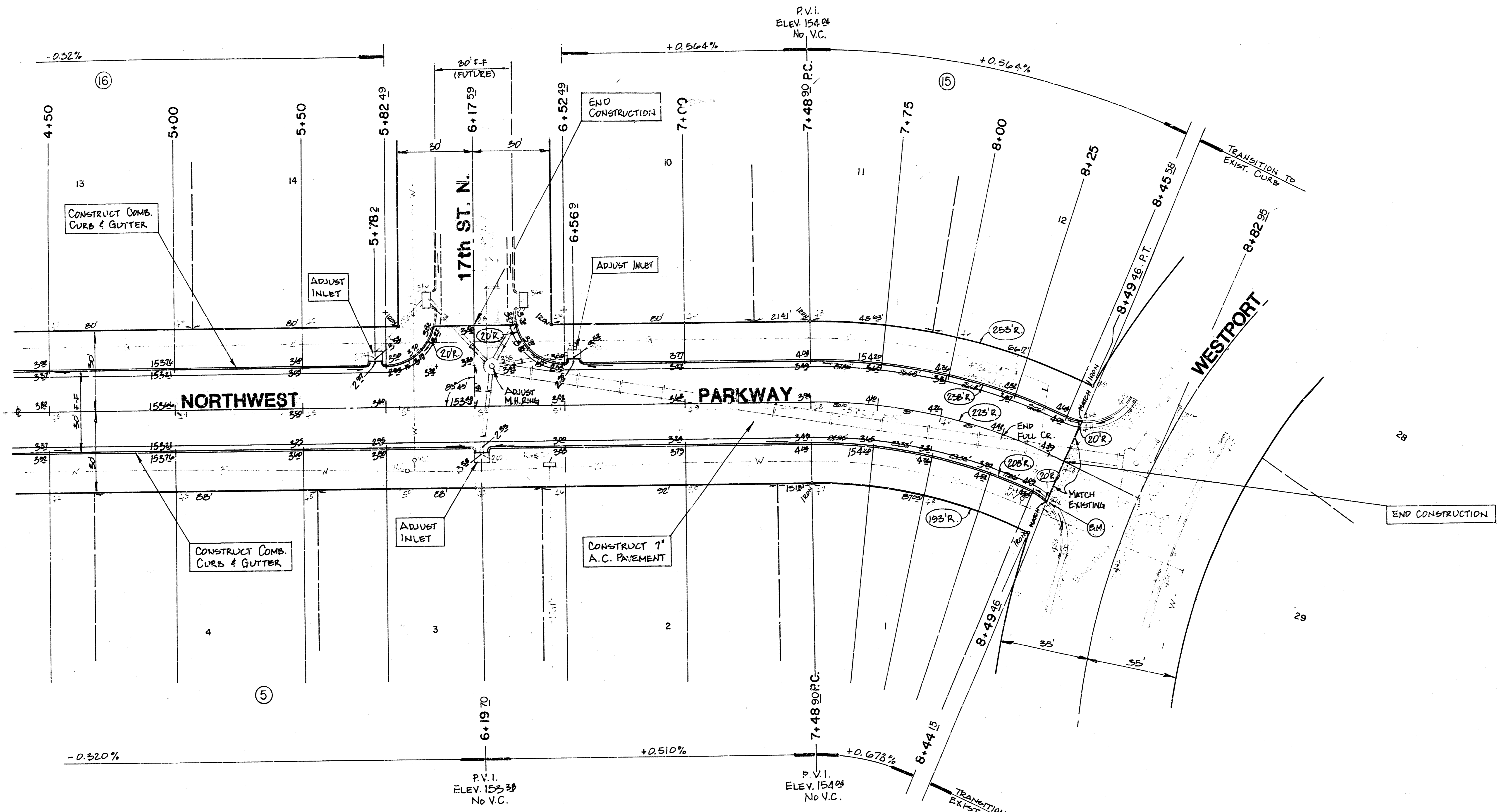
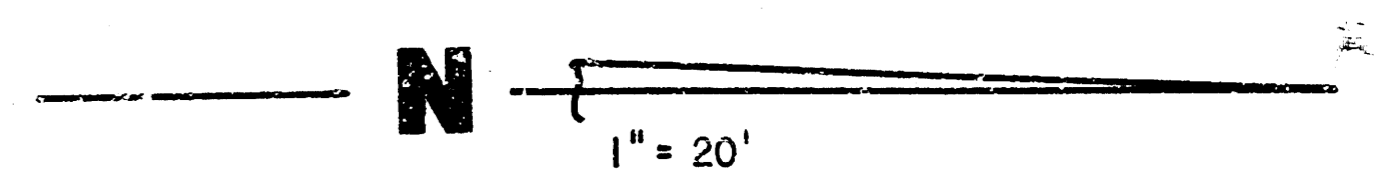
- SYMBOLS**
- Indicates Lot Lines
  - W — Indicates Water Lines
  - G — Indicates Gas Lines
  - UGP — Indicates KGE Lines
  - Indicates Existing Storm Sewers

**EARTHWORK QUANTITIES**

EXCAVATION = 2315.1 CY	COMPACTED FILL = 0
+ 10 = 231.5 CY	
TOTAL = 2546.6 CY	MANIPULATION = 3947 SY

**NORTHWEST PARKWAY**

Project no. 472-76-245-81299-000-000-001



INTERSECTION QUANTITIES

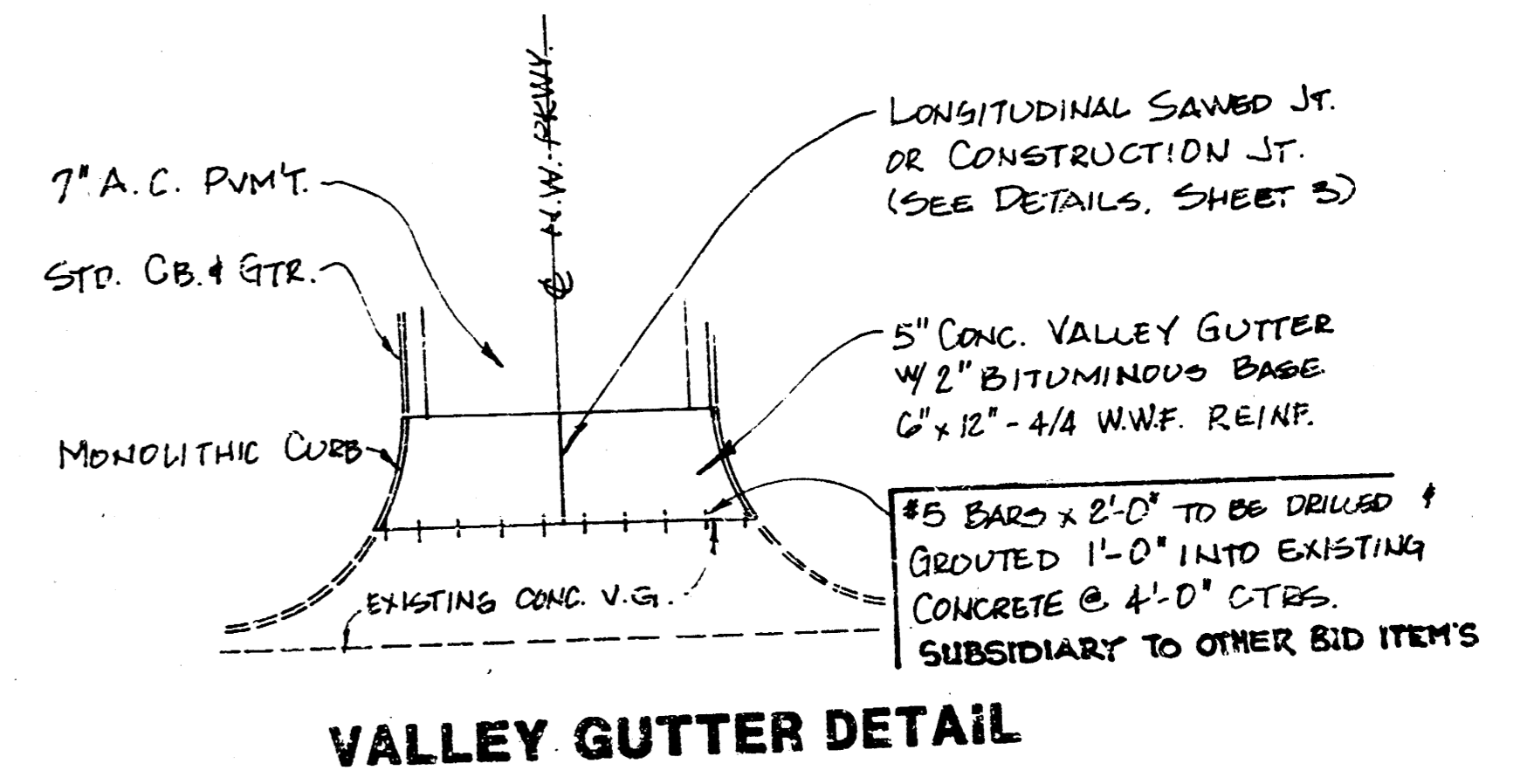
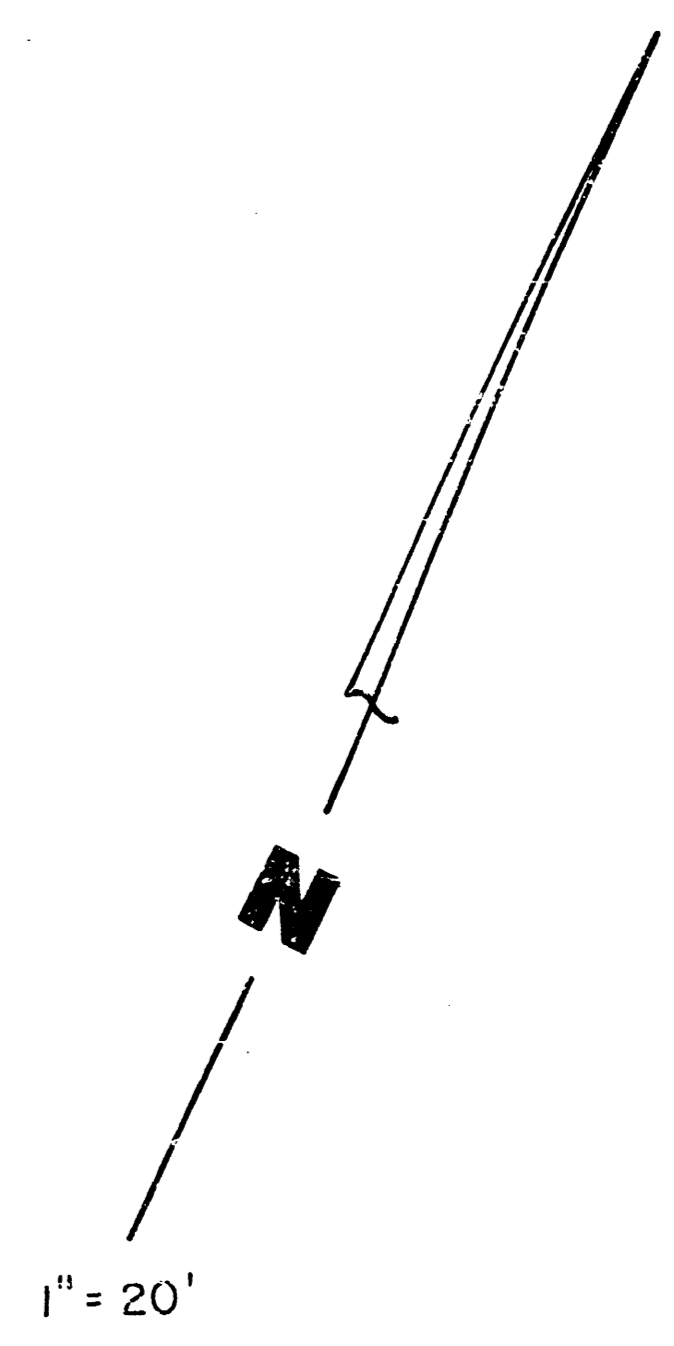
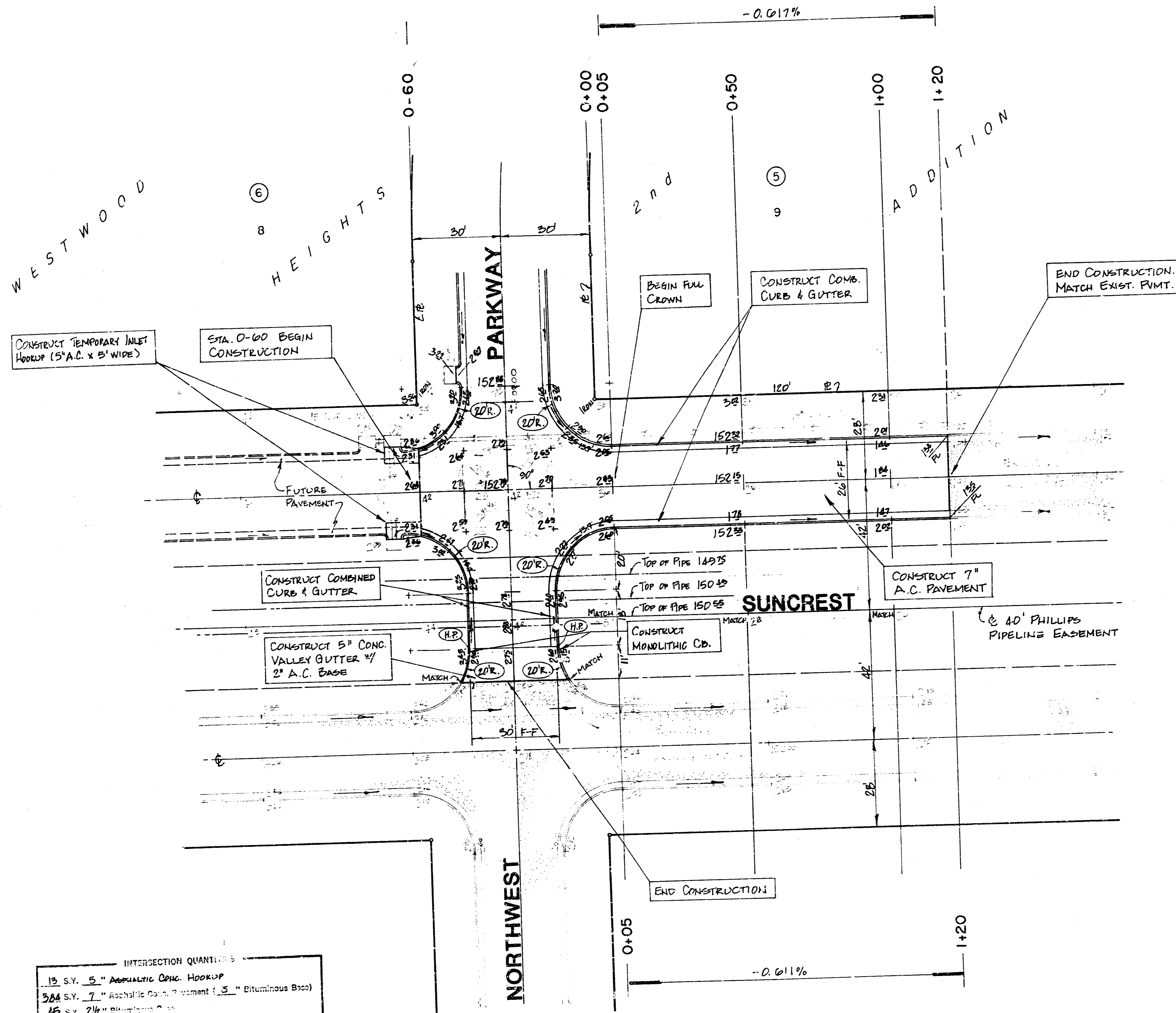
S.V.	" Concrete Pavement
17th S.V.	7" Asphaltic Conc. Pavement (5" Bituminous Base)
16th S.V.	2 1/2" Asphaltic Conc. Pavement (5" Bituminous Base)
5th S.V.	Concrete Pavement (5" Bituminous Base)
19th S.V.	Concrete Pavement (5" Bituminous Base)
S.V. 17th	Concrete & Asphaltic Concrete Base

CURVE DATA BASED ON  $\Delta = 25^\circ 50' 15''$ ,  $R = 223'$ ,  $T = 51' 15''$ ,  $ARC = 100' 55''$ ,  $LC = 95' 21''$

STA.	ARC	CHORD LENGTH		DEPL.	TOTAL DEPL.
		Opp. Pt. to C.	Opp. Pt. to C.		
7+48.90	0	-	-	0	0
7+75	26.11	20.78	23.40	3' 21" 11"	3' 21" 11"
8+00	25	27.84	22.41	5' 12' 42"	6' 58' 55"
8+25	25	27.84	22.41	5' 12' 42"	6' 46' 55"
8+49.46	19.15	17.12	22.41	2' 27' 54"	12' 14' 11"
8+45.58	14.2	22.69	-	0' 11' 01"	12' 25' 12"
8+49.46	5.88	-	-	0' 23' 54"	12' 55' 04"

DEFLECTION / FT. = 7.10792 MIN.

**NORTHWEST PARKWAY**  
 Project no. 472-76-245-81295-000-000-001

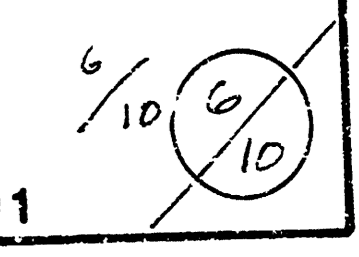


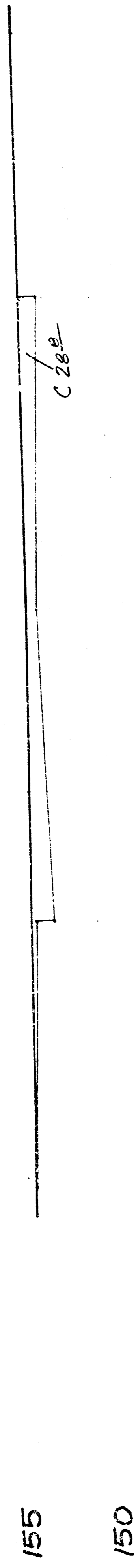
INTERSECTION QUANTITIES

13	S.Y.	5"	Asphaltic Conc. Hoodup
324	S.Y.	7"	Asphaltic Conc. Pavement (3" Bituminous Base)
15	S.Y.	2 1/2"	Asphaltic Conc. Base
151	L.F.		Combined Curb & Gutter
22	L.F.		MONOLITHIC CURB
	S.F.	4"	W.C. Manhole
	S.F.	4"	W.C. Manhole
	C.Y.		Excavation
	C.Y.		Compacted Fill
	Lbs.		Reinforcing Steel
110	S.Y.		Manhole Cover
	Tons		Lime or Cement
401	S.Y.	5"	Concrete & 2" Asphaltic Concrete Base

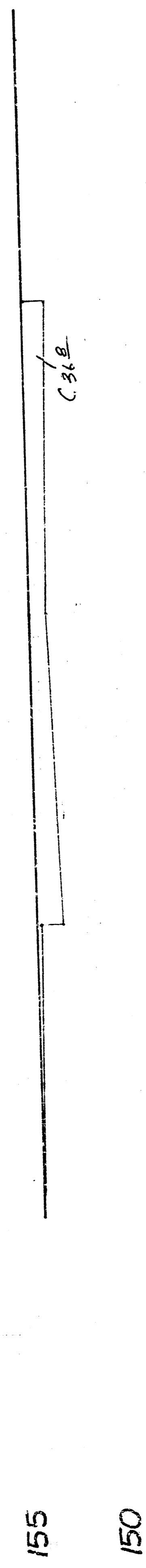
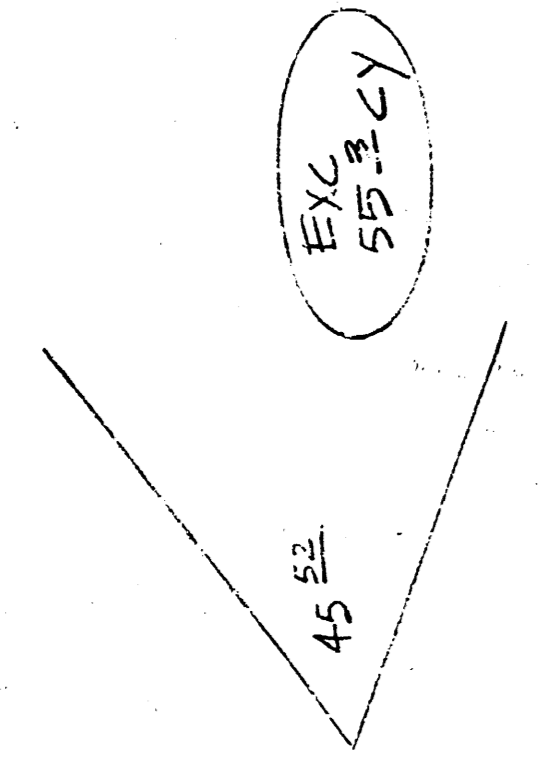
**SUNCREST**

Project no. 472 76 245 81299 000 500 001

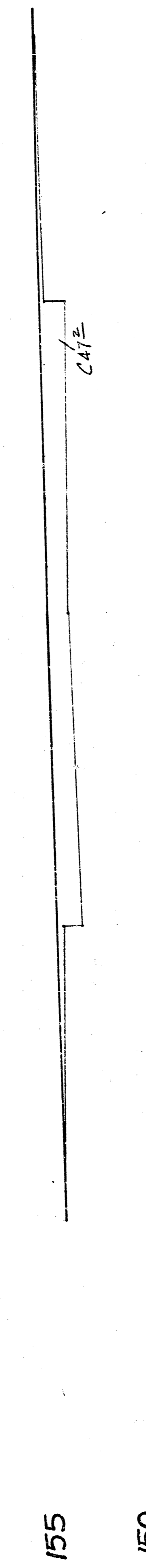
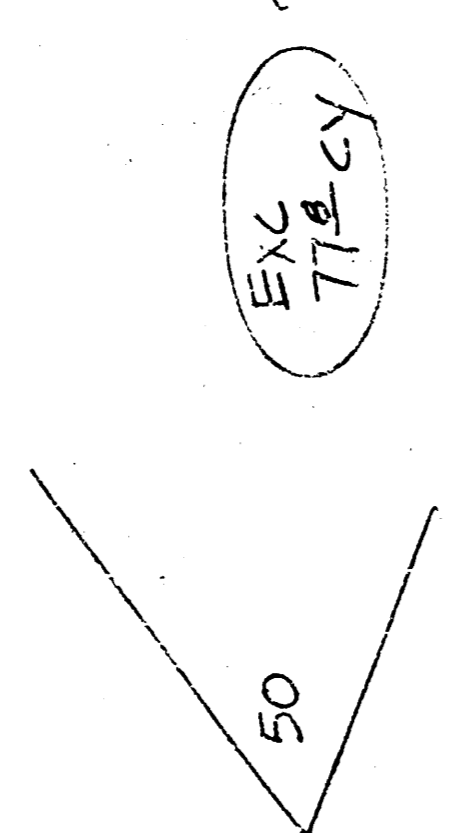




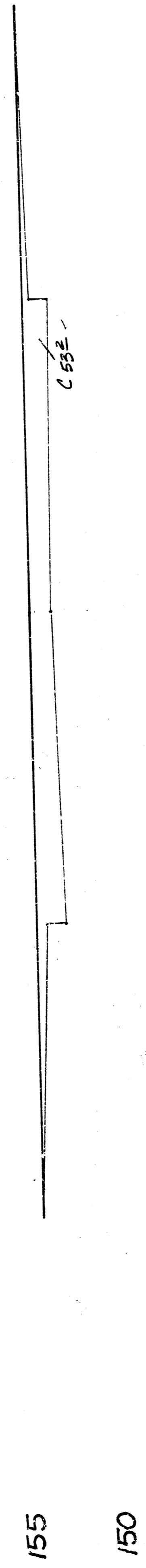
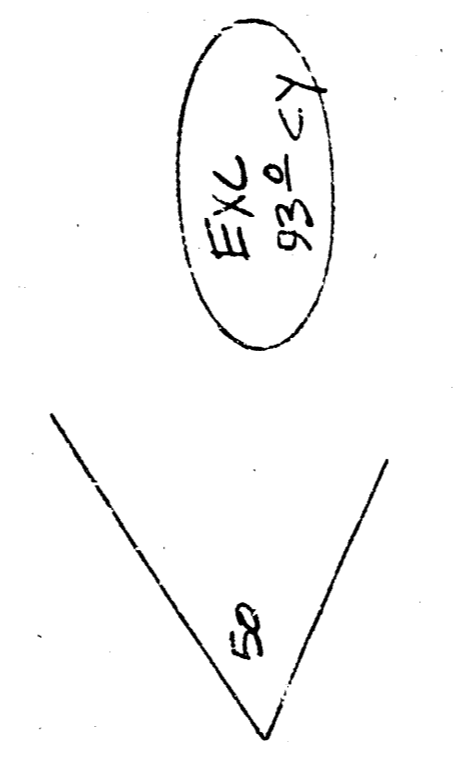
2+95.50



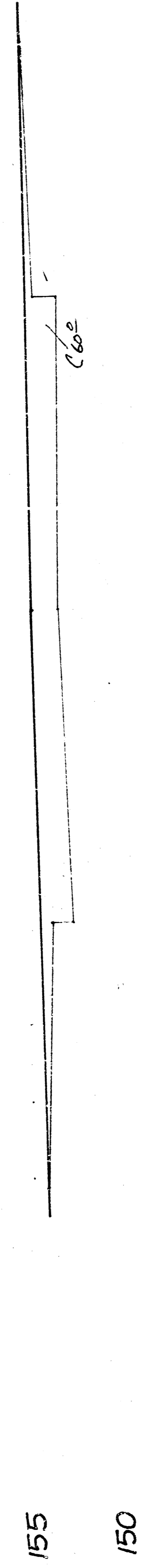
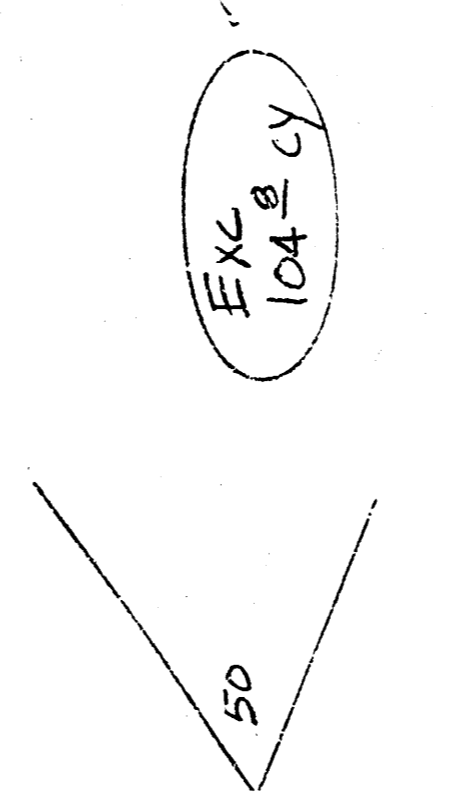
2+50



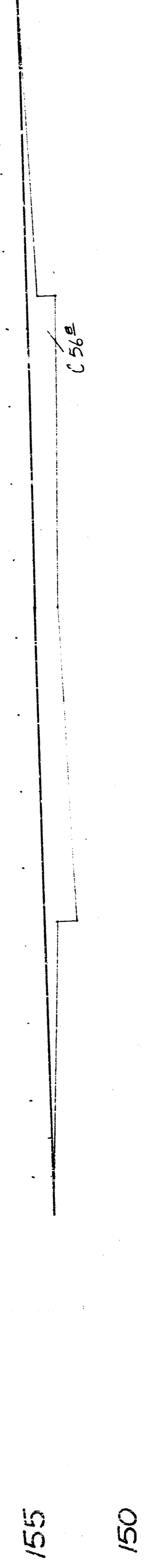
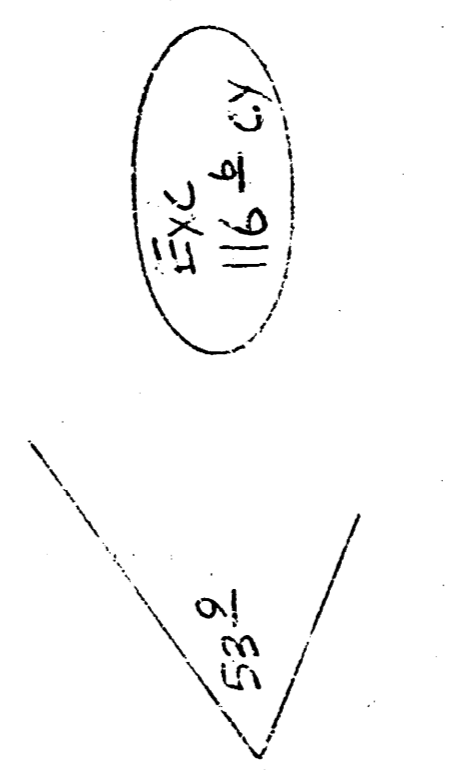
2+00



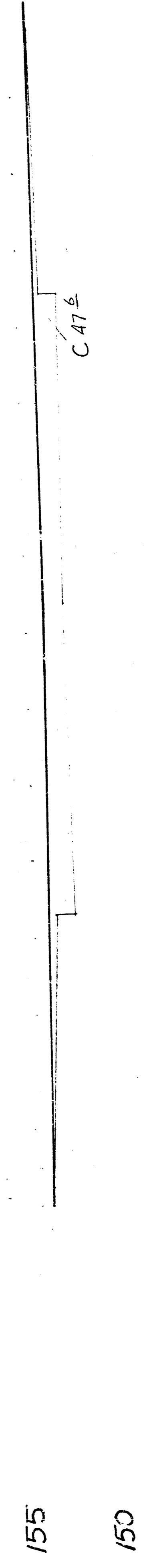
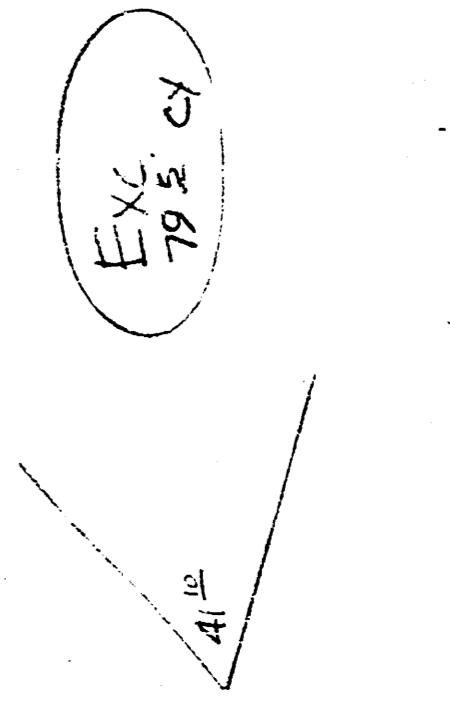
1+50



1+00



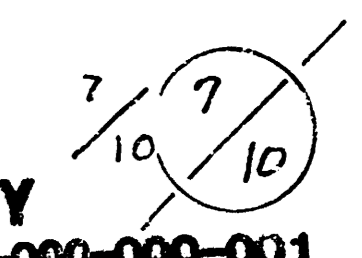
0+46

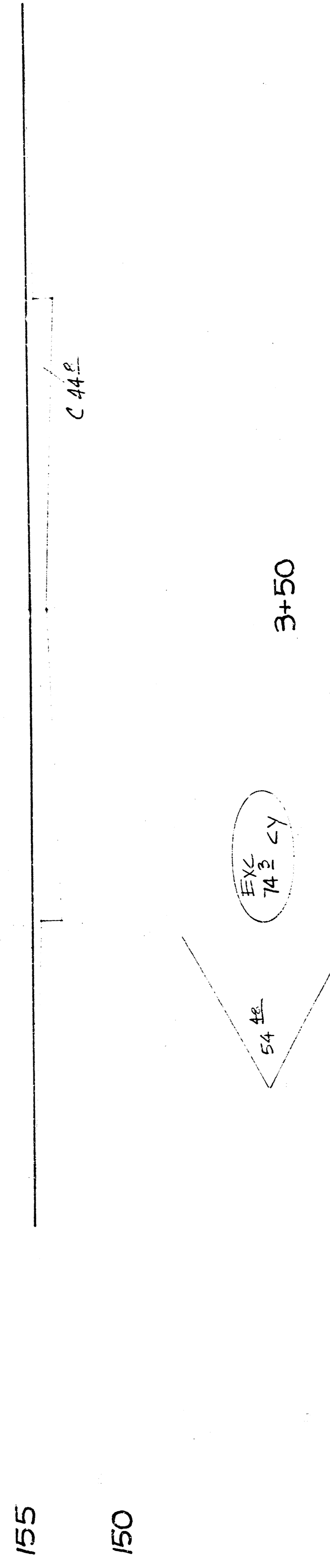
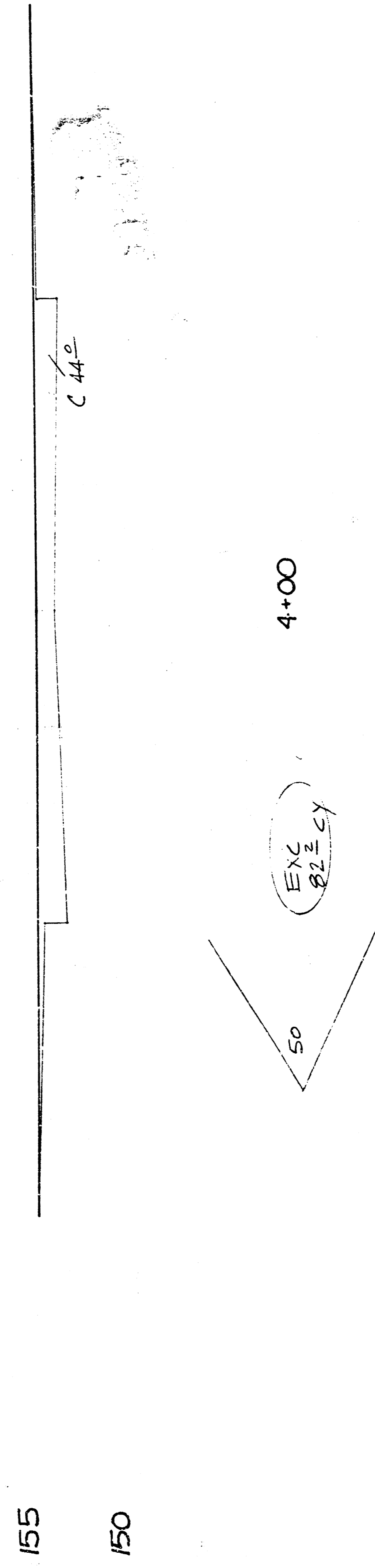
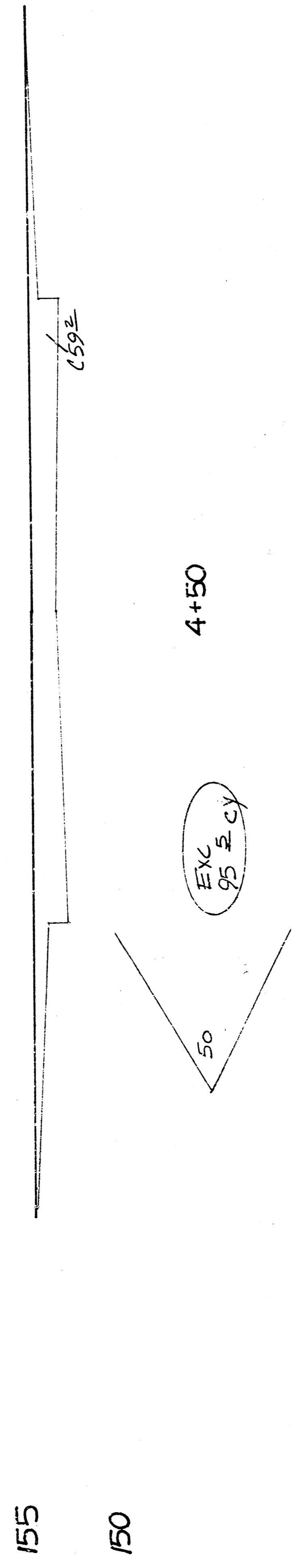
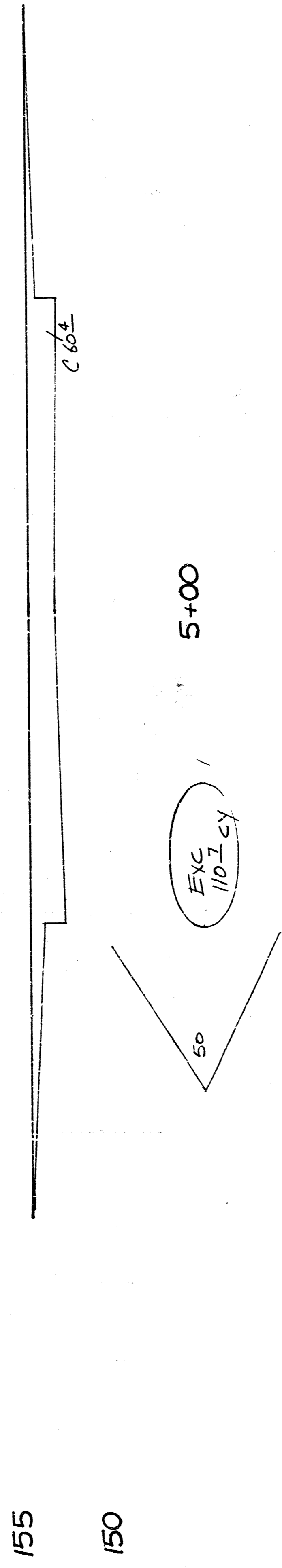
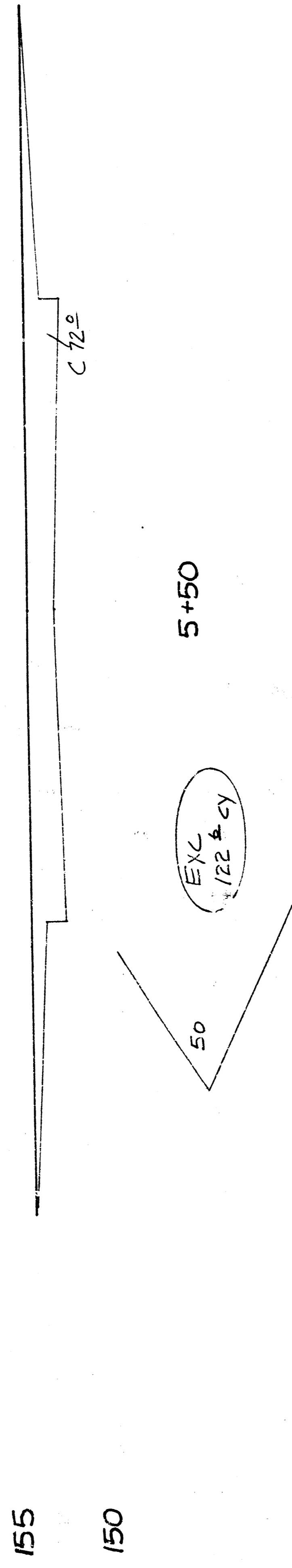
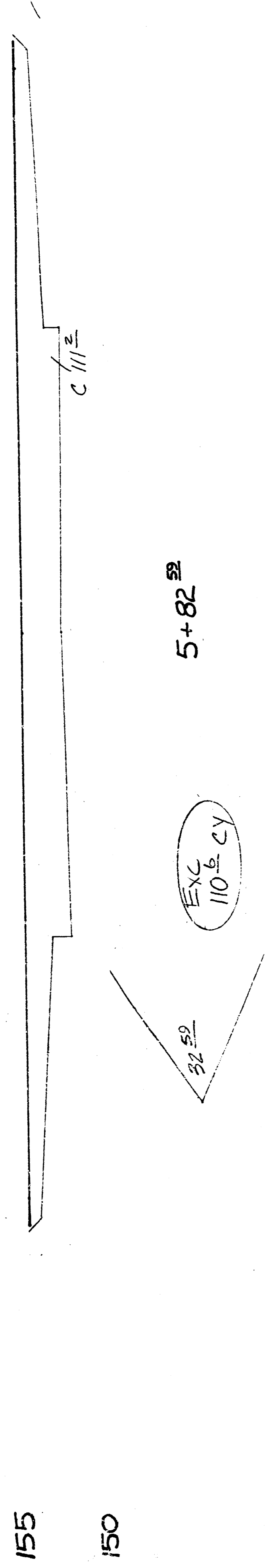


0+05

SHEET TOTAL  
EXCAVATION 527 C.Y.

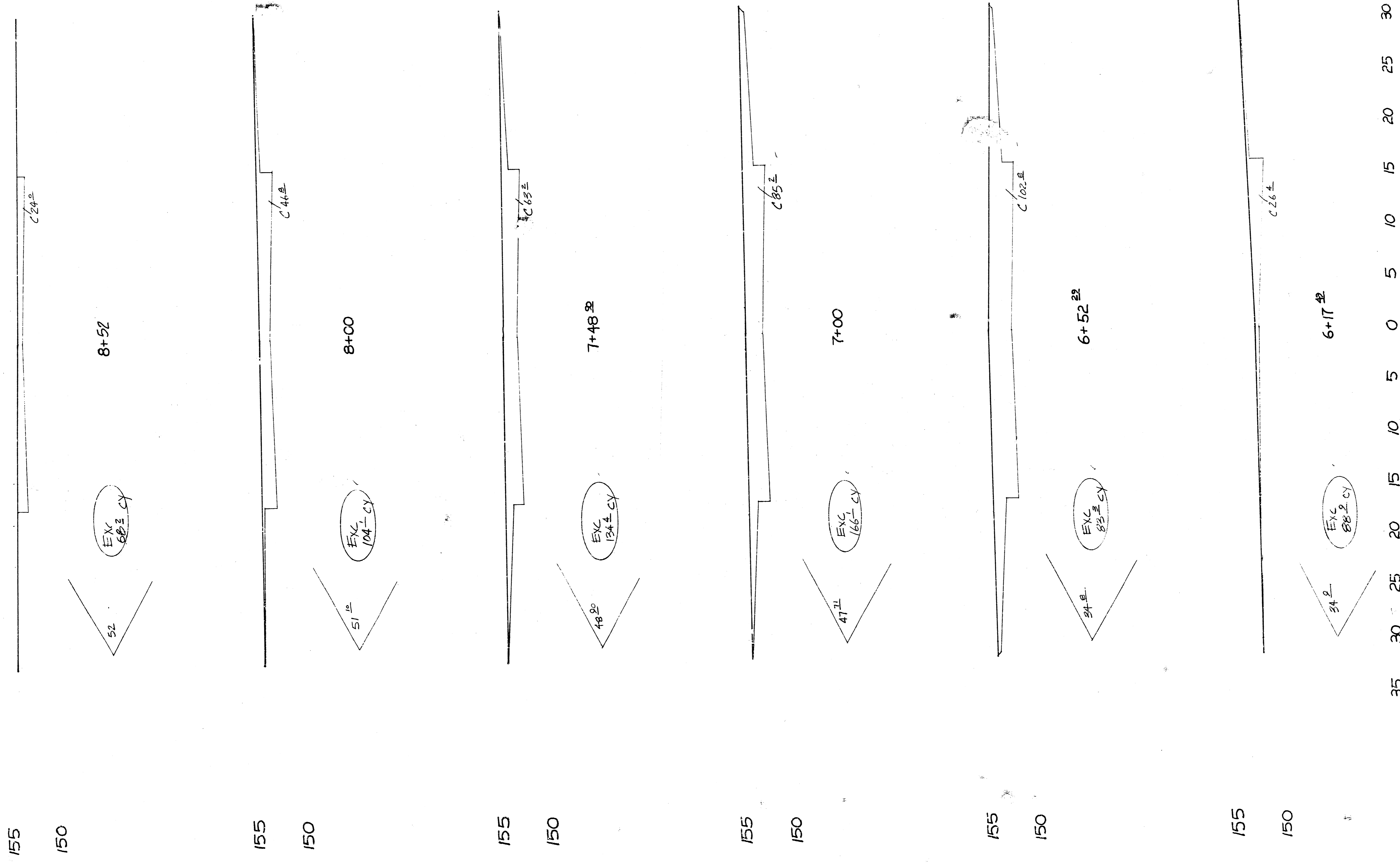
35 30 25 20 15 10 5 0 5 10 15 20 25 30 35



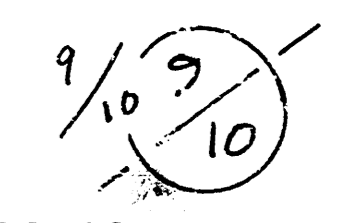


CUMULATIVE TOTAL  
EXCAVATION 550.5 cu yd

35 30 25 20 15 10 5 0 5 10 15 20 25 30 35

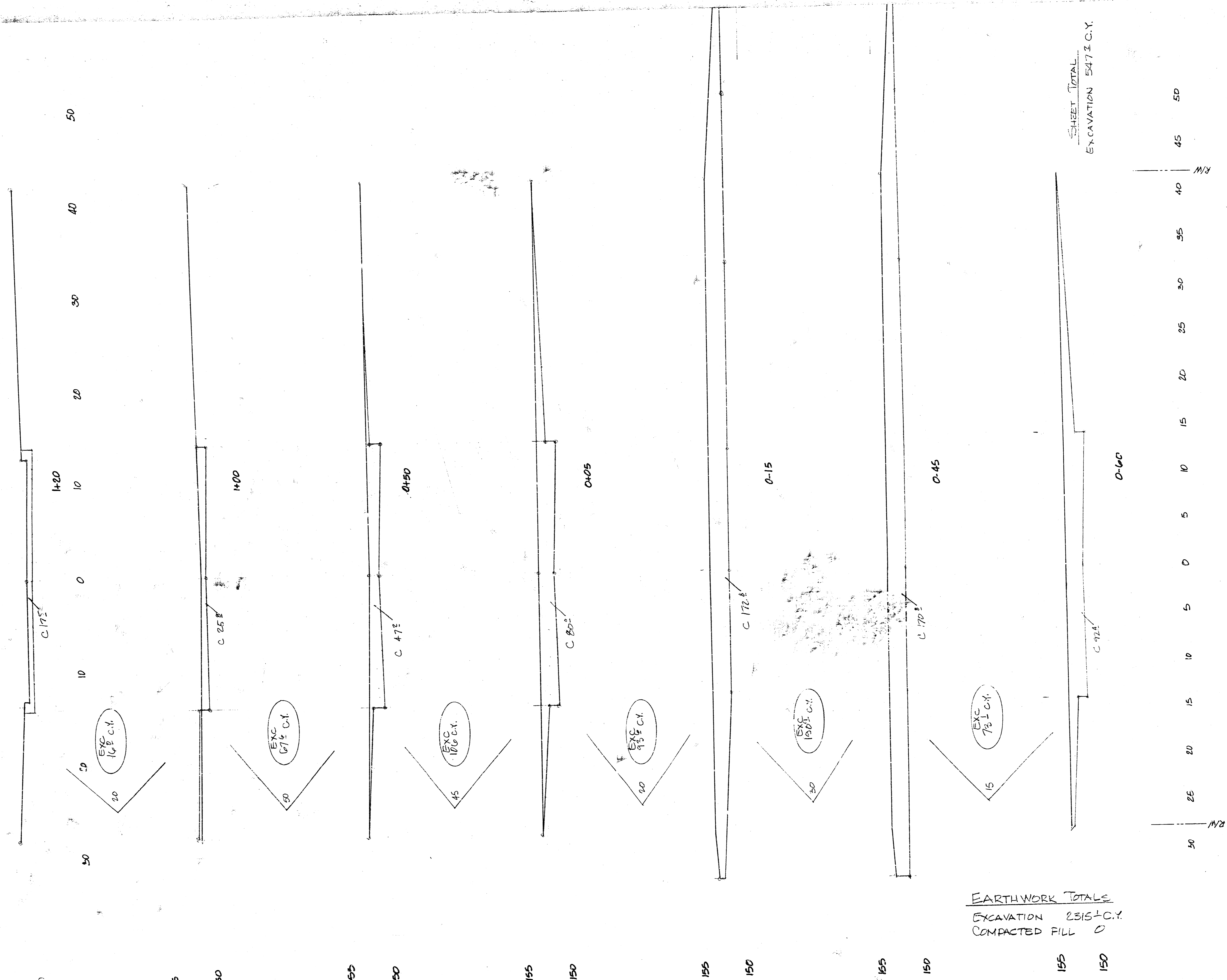


EARTHWORK SECTIONS  
 NORTHWEST PARKWAY  
 Project no. 472-76-245-81299-000-001-301



FILMED FROM THE BEST

BA II



SHEET TOTAL  
EXCAVATION 547 C.Y.

EARTHWORK TOTALS  
EXCAVATION 2315 C.Y.  
COMPACTED FILL 0

EARTHWORK SECTIONS  
**SUNCREST**  
Project no. 472-78-245-61289-000-001

