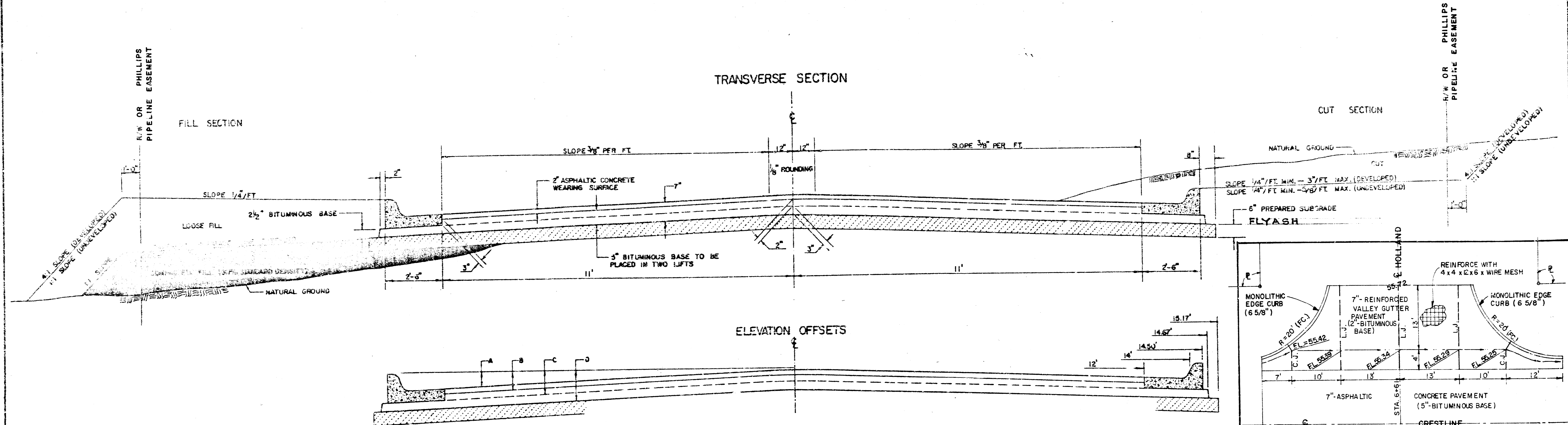
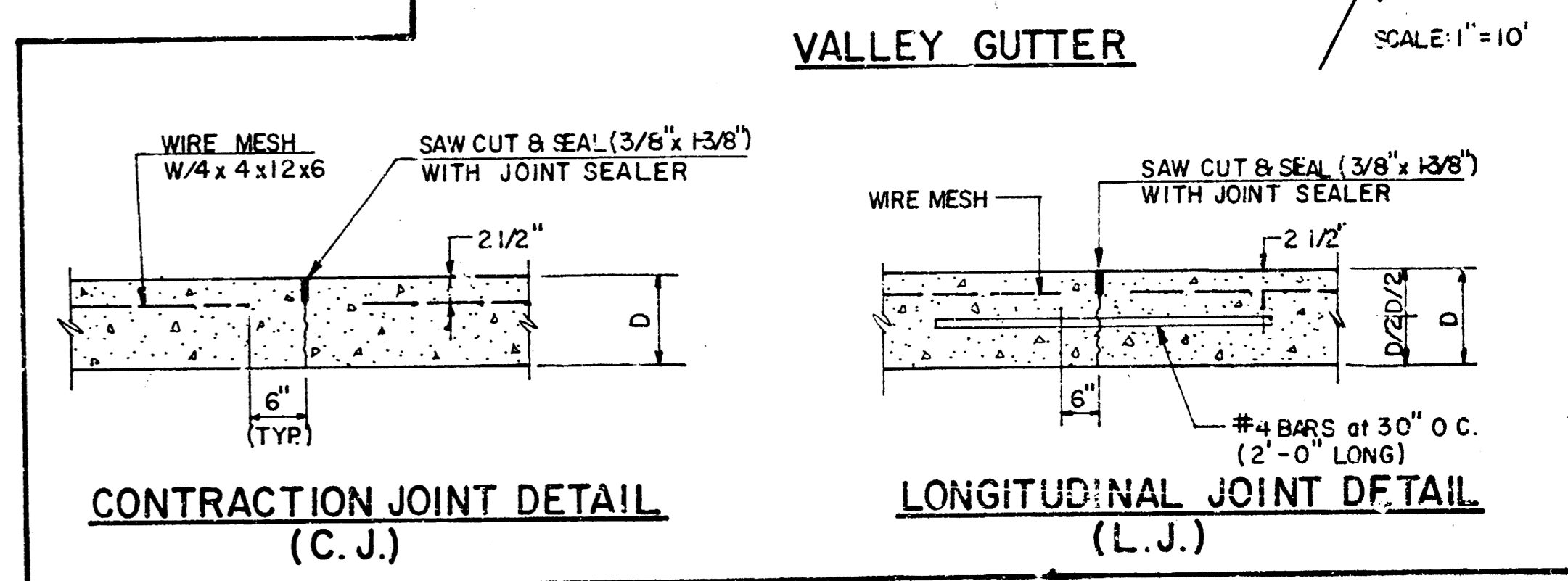
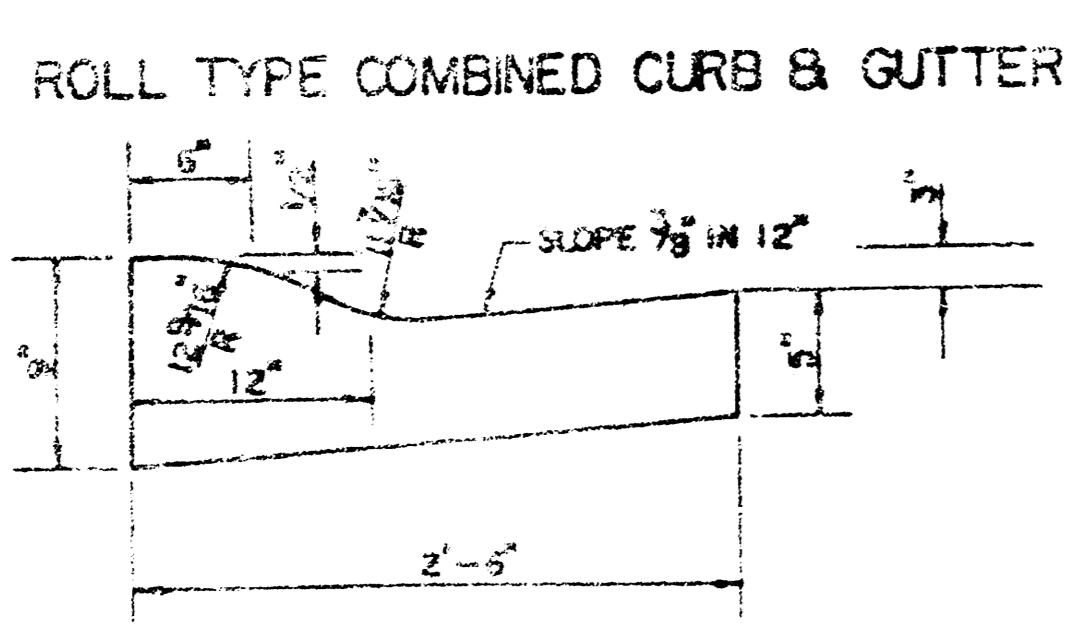
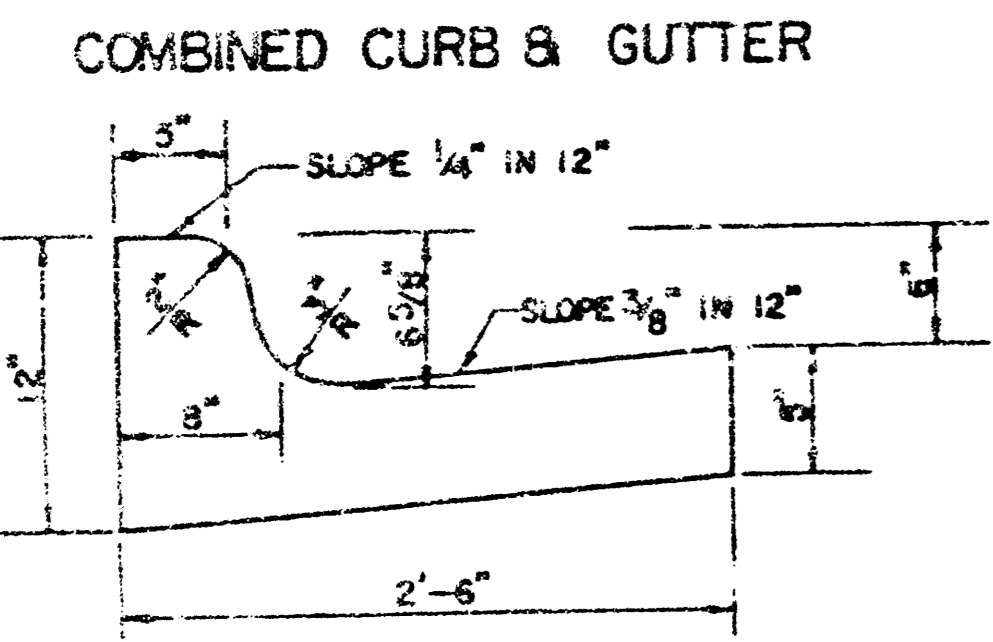


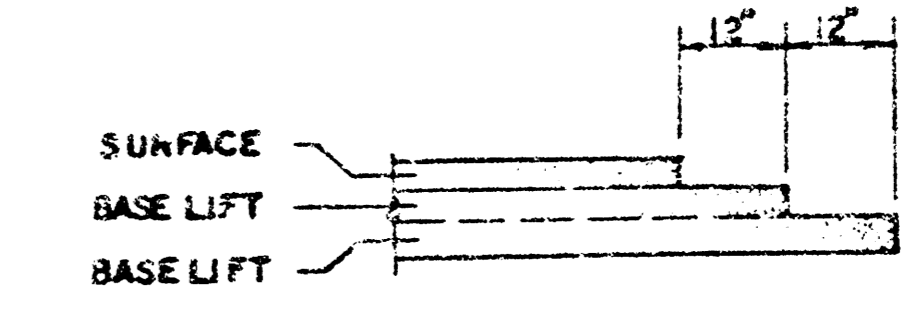
TYPICAL 27' PAVEMENT DETAILS



	DISTANCE FROM CENTERLINE (LC & RT)											
	0'	2'	4'	6'	7'	8'	10'	11'	13'	13.5'	13.67'	14.17'
A: TOP OF CURBS TO TOP OF SURFACE LIFT	0.15	0.21	0.27	0.33	0.37	0.40	0.46	0.48	---	---	---	---
B: TOP OF CURBS TO TOP OF UPPER BASE LIFT	0.32	0.38	0.44	0.50	0.54	0.57	0.63	0.66	---	---	---	---
C: TOP OF CURBS TO TOP OF LOWER BASE LIFT	0.48	0.50	0.64	0.71	0.75	0.79	0.87	0.91	0.98	1.00	1.01	---
D: TOP OF CURBS TO TOP OF SUBGRADE	0.73	0.80	0.87	0.94	0.98	1.01	1.08	1.18	1.19	1.21	1.21	1.23



TRANSVERSE CONSTRUCTION JOINTS



TRANSVERSE CONSTRUCTION JOINTS SHALL BE CONSTRUCTED IN FLEXIBLE BASE PAVEMENTS AT LOCATIONS WHERE PAVEMENT JOINTS EXISTING FLEXIBLE BASE PAVEMENT AS SHOWN BY THE DETAIL. ALL COSTS ASSOCIATED WITH THE CONSTRUCTION OF THE TRANSVERSE JOINT SHALL BE INCLUDED IN THE BID PRICE FOR SQUARE YARDS 7" ASPHALTIC CONCRETE (5" BITUMINOUS BASE).

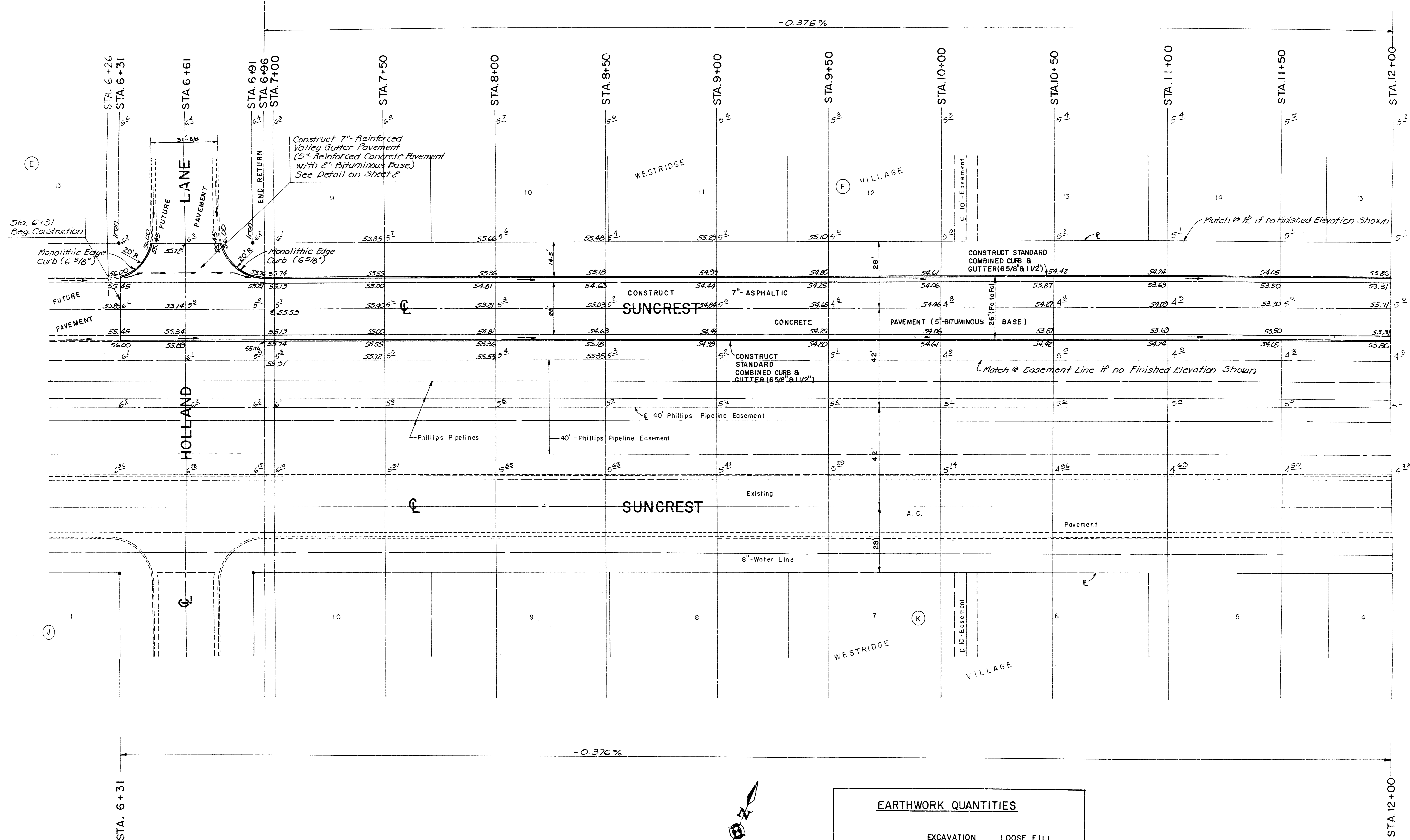
GENERAL NOTES

- 1) THE ASPHALTIC CONCRETE PAVEMENT BETWEEN THE COMBINED CURB AND GUTTER SHALL BE PAID AS SQUARE YARDS OF 7" ASPHALTIC CONCRETE (5" BITUMINOUS BASE).
- 2) THE BITUMINOUS BASE UNDER AND BEHIND THE COMBINED CURB AND GUTTER SHALL BE PAID AS SQUARE YARDS OF 2 1/2" BITUMINOUS BASE.
- 3) A THICK COAT OF EMULSIFIED ASPHALT (SC-1H OR OSS-1H) SHALL BE APPLIED AT AN APPROXIMATE RATE OF 0.05 GALLONS PER SQUARE YARD BETWEEN EACH LIFT OF ASPHALTIC MATERIAL.
- 4) BITUMINOUS BASE AND ASPHALTIC CONCRETE WEARING SURFACE SHALL BE PLACED WITH A LAYDOWN MACHINE HAVING AUTOMATIC CONTROLS FOR LINE AND GRADE.
- 5) CONSTRUCTION JOINTS IN EACH LIFT SHALL BE STAGGERED A MINIMUM DISTANCE OF ONE (1) FOOT FROM JOINTS IN PRECEDING LIFTS AND PLACED SO THAT A JOINT WILL BE CONSTRUCTED ON THE CENTERLINE OF THE TOP LIFT.
- 6) CONTRACTOR TO BID ONLY ONE SUBGRADE TREATMENT ALTERNATE WHEN ALTERNATES ARE PROVIDED IN THE PROPOSAL AND CONTRACT. THE ALTERNATE CHOSEN BY THE SUCCESSFUL BIDDER SHALL BE USED IN CONSTRUCTING THIS PROJECT.

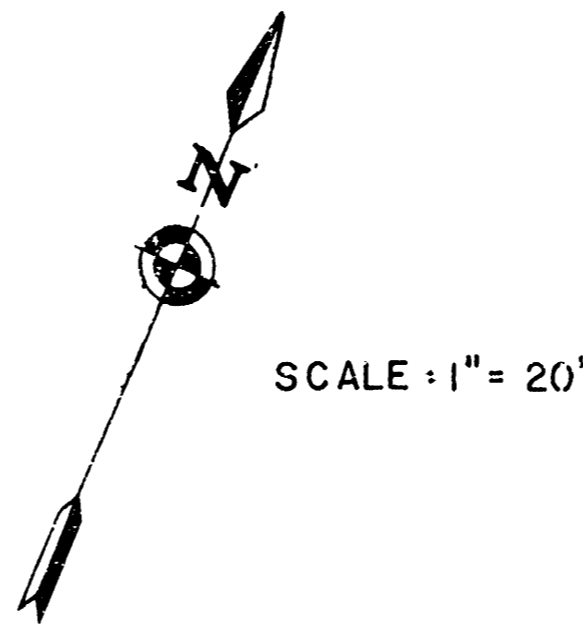
7 INCH RESIDENTIAL ASPHALTIC CONCRETE PAVEMENT WITH 5 INCH BITUMINOUS BASE
 CITY OF WICHITA, KANSAS
 PROJECT NUMBER
 472-76-245-80741000-000-001

INTERSECTION QUANTITIES

- STD. COMB. C&G (6" & 1 1/2")
- MONOLITHIC EDGE CURB (6" & 8") 48 L.F.
- 2 1/2" BITUMINOUS BASE
- 7" A.C. PAVT. (5" BITUMINOUS BASE AND 2" A.C. WEARING SURFACE) 135 S.Y.
- 7" REINFORCED VALLEY GUTTER PAVT. (5" R.C. PAVT. AND 2" BITUMINOUS BASE) 84 S.Y.



B.M. #1 - NORTHEAST CORNER, PORCH OF HOUSE # 1543
 GLENHURST. ELEV. = 160.94

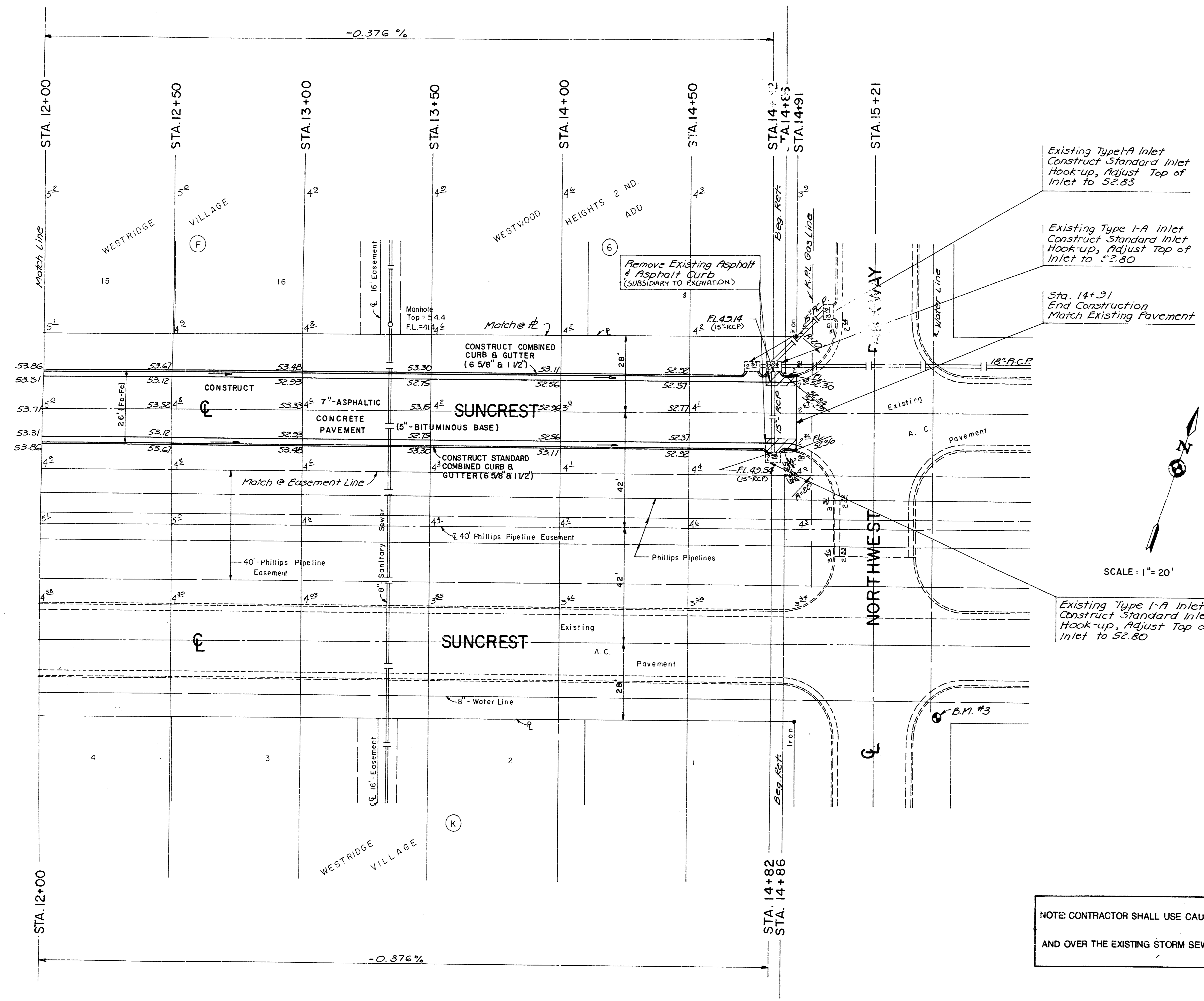


SCALE: 1" = 20'

EARTHWORK QUANTITIES		
	EXCAVATION	LOOSE FILL
+10 %	1,631 C.Y.	12 C.Y.
	163 C.Y.	1 C.Y.
TOTAL	1,794 C.Y.	13 C.Y.
MANIPULATION 2,767 S.Y.		

NORTHERLY HALF OF SUNCREST		
SCALE: 1" = 20'	APPROVED BY:	DRAWN BY: K. P.
DATE: 7-86	REVISOR:	REVISION:
PROJECT NO.: 472-76-245-81548-000-000-001		
M.E. PROJECT NO. 86-18		DRAWING NUMBER 3 OF 7

MUNICIPAL ENGINEERS
 Civil Engineers & Land Surveyors
 224 Laura, Suite 201
 Wichita, Kansas 67211



Existing Type-A Inlet
Construct Standard Inlet
Hook-up, Adjust Top of
Inlet to 52.83

Existing Type 1-A Inlet
Construct Standard Inlet
Hook-up, Adjust Top of
Inlet to 52.80

Sta. 14+91
End Construction
Match Existing Pavement

SCALE: 1" = 20'

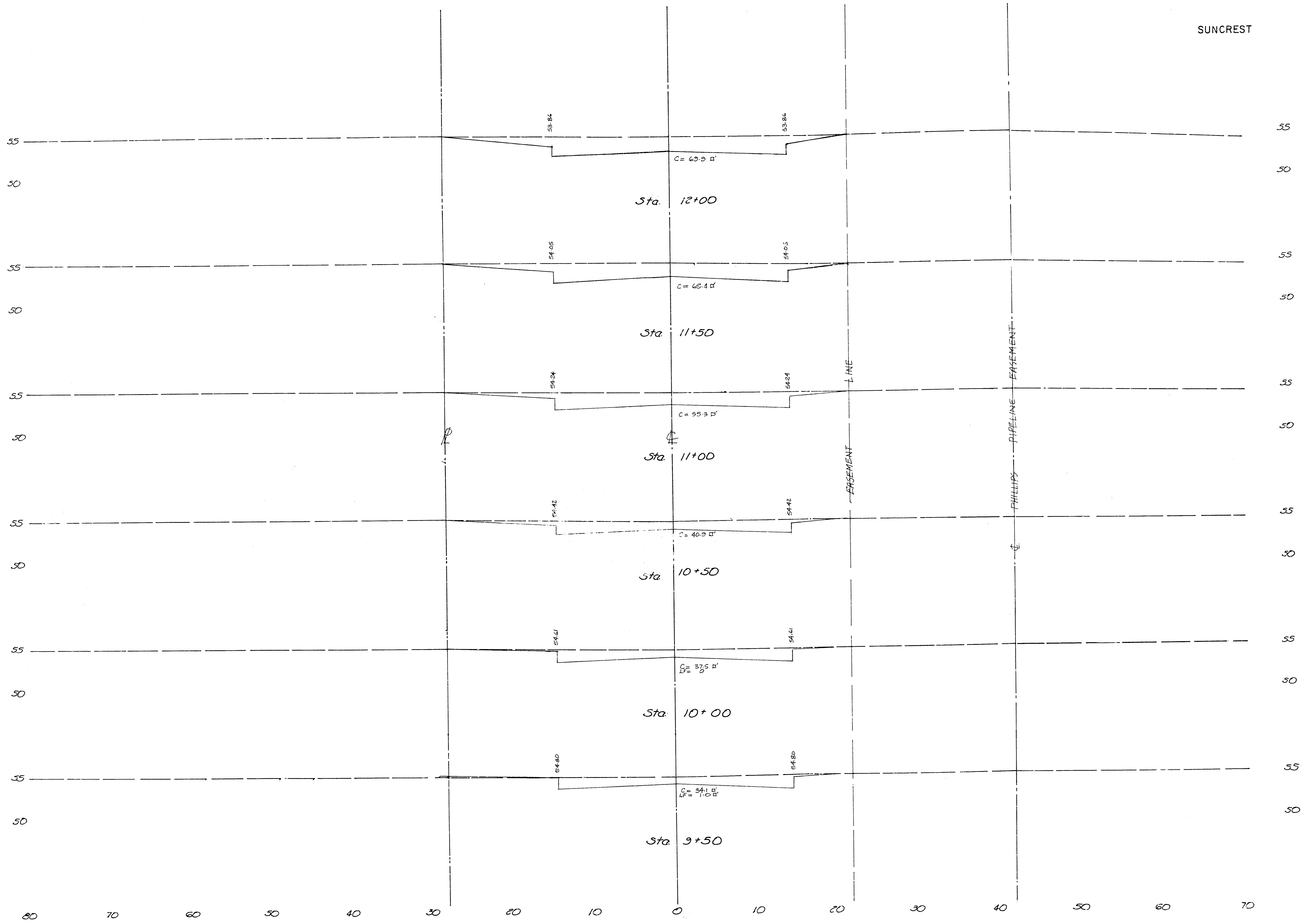
Existing Type 1-A Inlet
Construct Standard Inlet
Hook-up, Adjust Top of
inlet to 52.80

NOTE: CONTRACTOR SHALL USE CAUTION WHEN WORKING THE SUBGRADE AROUND AND OVER THE EXISTING STORM SEWER PIPE IN ORDER TO NOT DAMAGE THE PIPE.

B.M. #3 - TOP OF FLANGE (WEST SIDE) OF
FIRE-HYDRANT AT SE. COR., NORTHWEST
PARKWAY & SUNCREST
ELEV. = 154.35

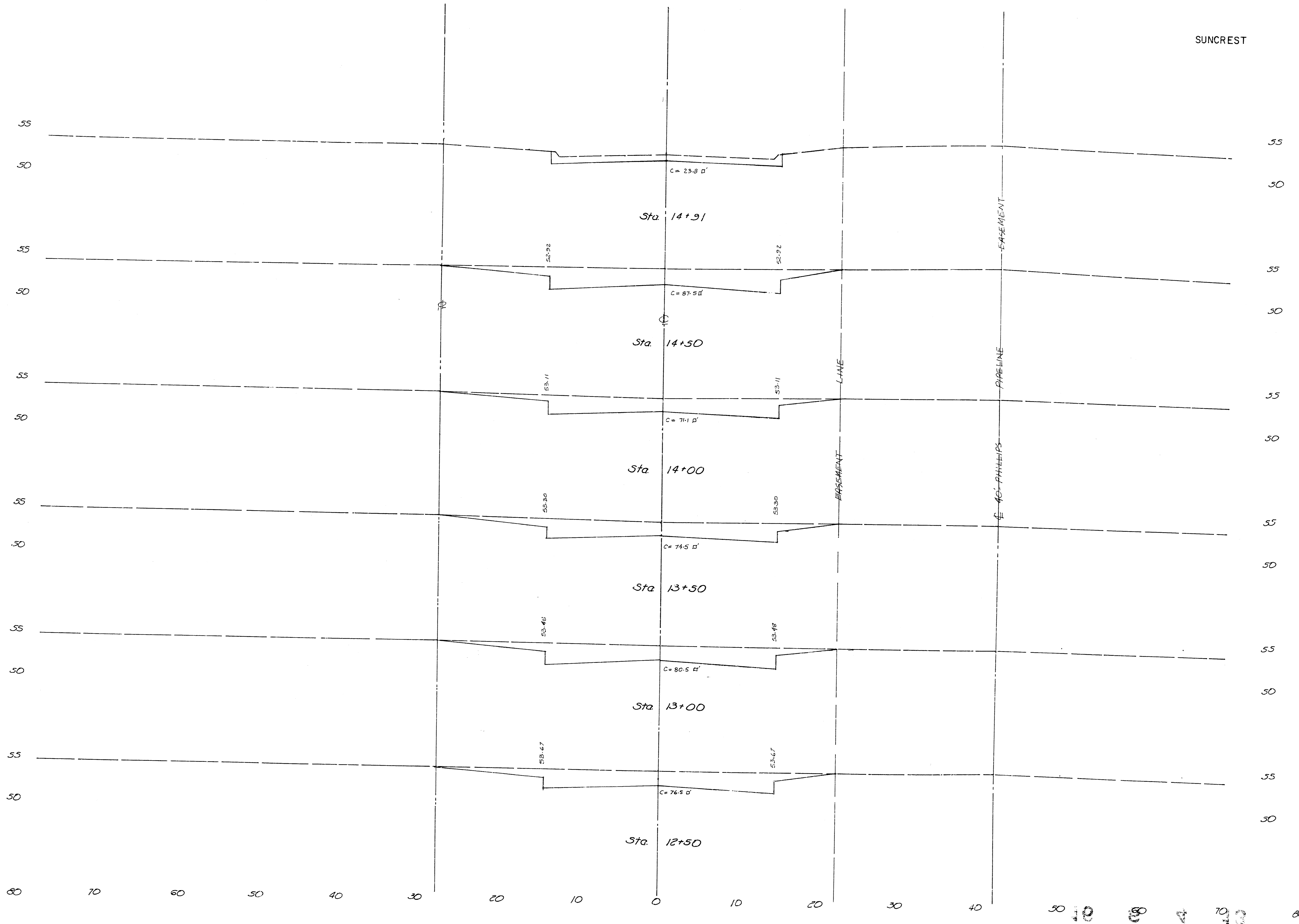
NORTHERLY HALF OF SUNCREST			
SCALE: 1" = 20'	APPROVED BY:	DRAWN BY: K.P.	
DATE: 7-86		REVISED:	
PROJECT NO. 472-76-245-81548-000-000-001			
M.E. PROJECT NO. 86-18			
			DRAWING NUMBER 4 OF 7

MUNICIPAL ENGINEERS
Civil Engineers & Land Surveyors
254 Laura, Suite 201
Wichita, Kansas 67211



SUNCREST

7/7



10 20 30 40 50 60 70 80 7/7