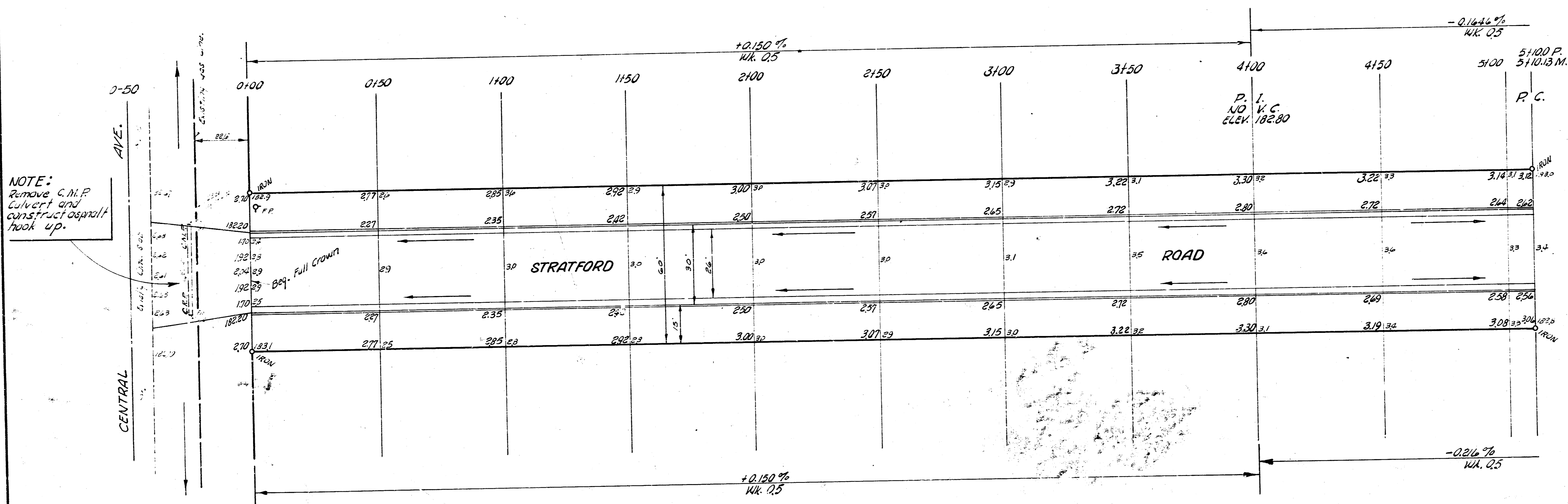


B.M. 154.6 - R.R. Spike W. Side R.P. E Line Stratford 25' S. of NL Central.
 B.M. 181.63 "F" on E. N. Hdwl of R.C.B.C. 25' W. of Mission on Central.

SCALE 1"=20'



Survey of J.B.K. 1894
 J.W.
 1894

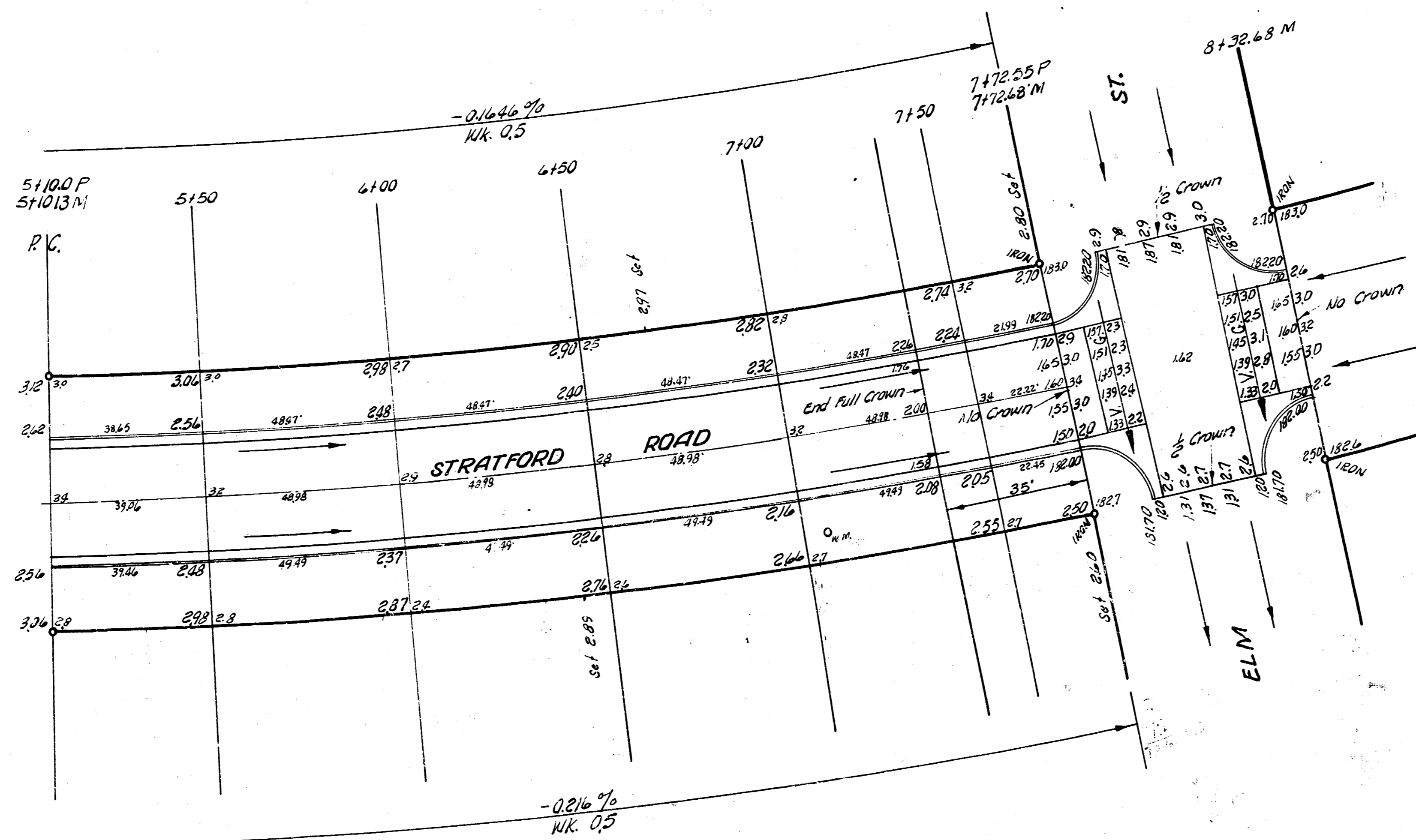


1/3

STRATFORD ROAD
 NL CENTRAL to NL ELM
 26-2-30 A.C.
 CITY OF WICHITA, KANSAS
 B. E. SMITH CITY ENGINEER
 July 1957 PROJ. NO. C14-329

NOTE: stationing on east property line.

SCALE 1"=20'



CURVE DATA - Sta. 5100.13 to 7172.68 6' offset W.C.B. - R=1421.57 Δ=10° 12' 56"
 CURVE DATA - Sta. 5100.13 to 7172.68 6' offset E.C.B. - R=1463.57 Δ=10° 12' 56"

STATION	Arc Length (Sta. Interval)	Deflection Angle	Total Deflection	Chord Length 6' offset W.C.B.	Chord Length 6' offset E.C.B.
5100.13					
+50	34.63'	0° 46' 33"	0° 46' 33"	38.67	39.17
+100	49.72'	0° 58' 22"	1° 44' 55"	48.25	49.07
+150	49.62'	2° 58' 22"	2° 43' 17"	48.25	49.07
+200	49.62'	0° 58' 22"	3° 41' 38"	48.25	49.07
+250	49.62'	0° 58' 22"	4° 40' 00"	48.25	49.07
+300	49.62'	0° 58' 22"	5° 38' 28"	48.25	49.07
7172.68	22.54'			21.89	22.53

STRATFORD ROAD

2/3

PROJ. NO. C14-329