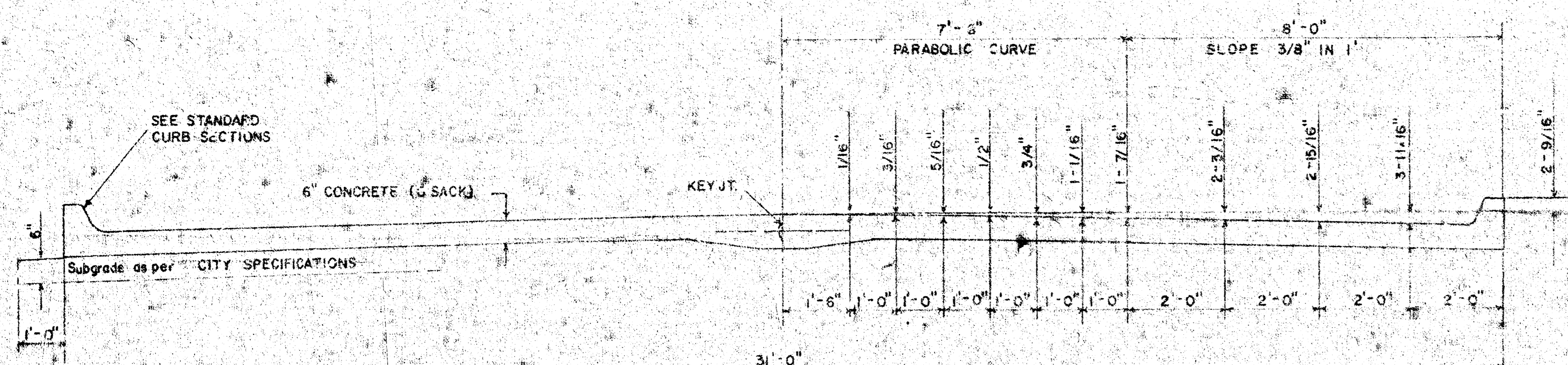
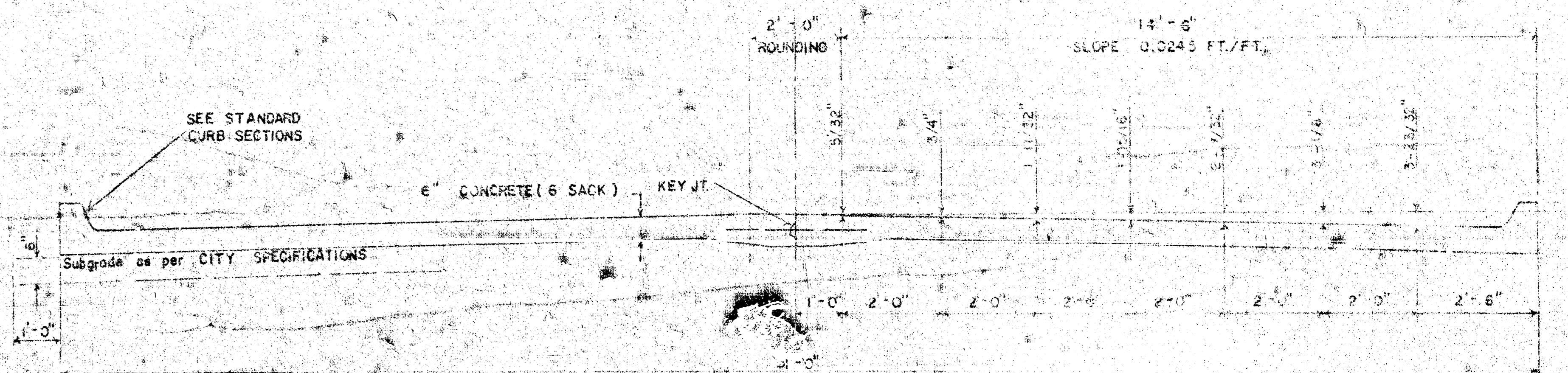


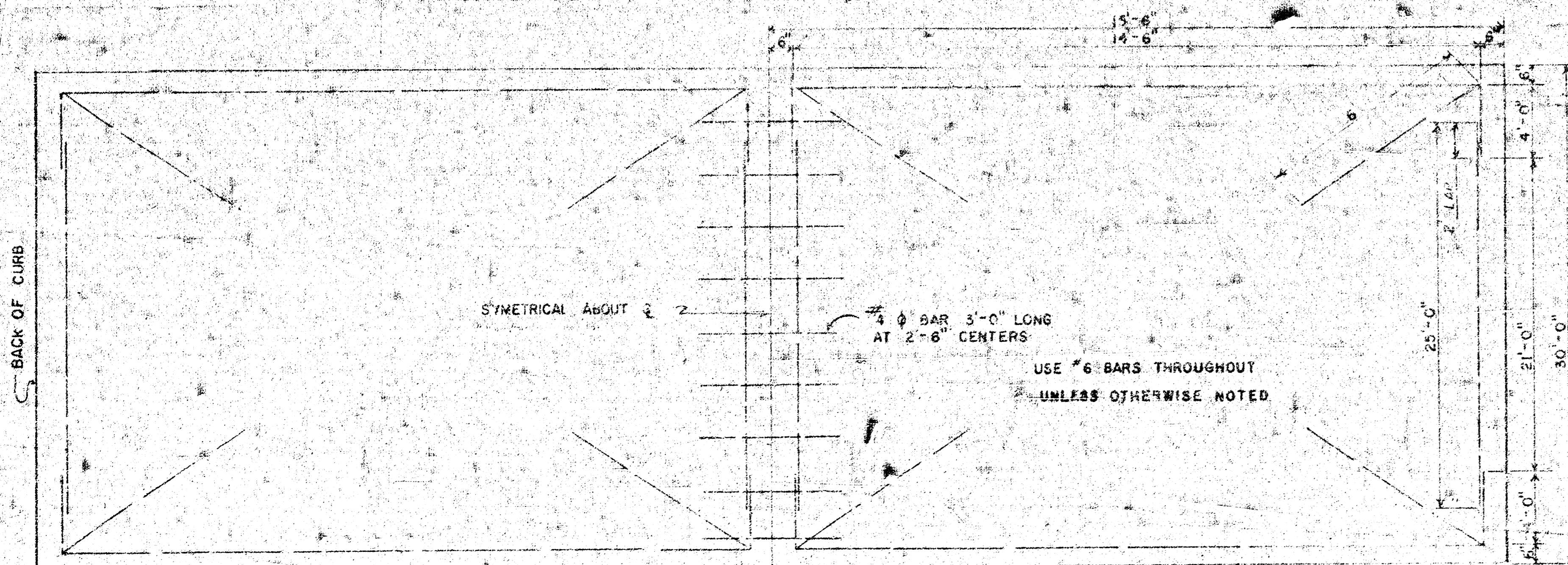
SUNNYBROOK LANE
E.L. ST. PAUL AVE. TO W.L. RICHMOND AVE.
TYPICAL SECTIONS OF 30' CONCRETE PAVEMENT



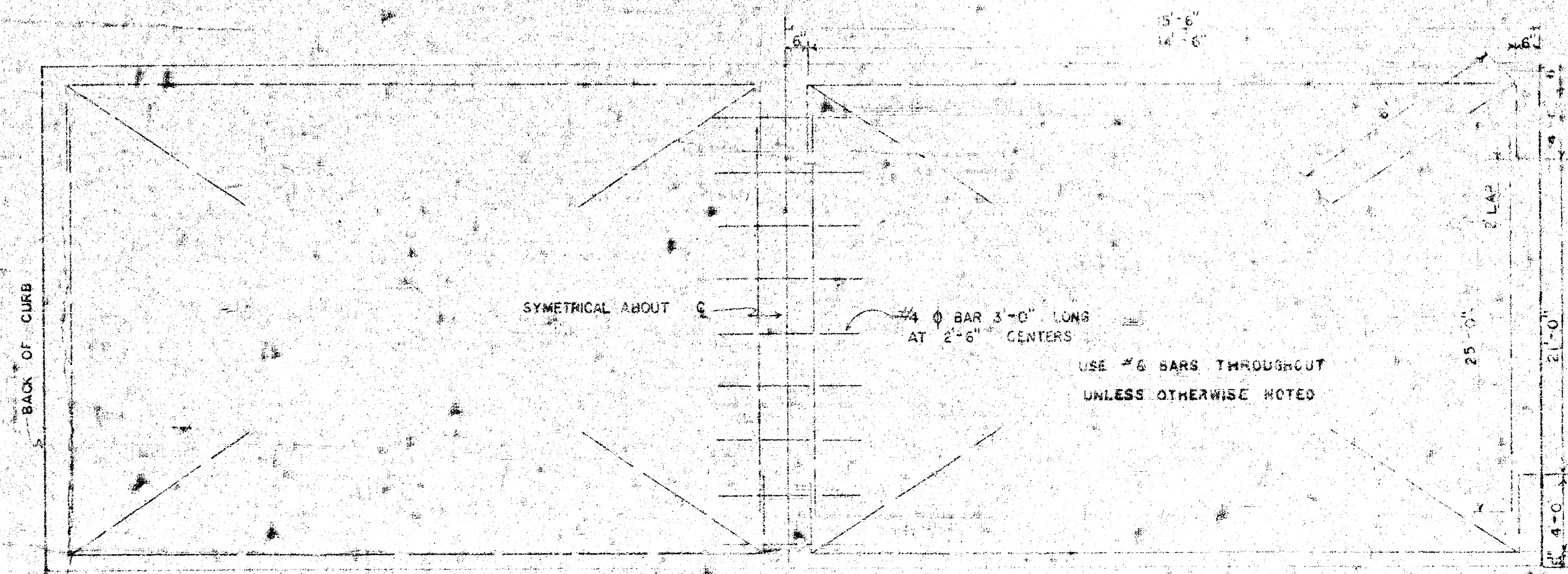
TYPICAL SECTION WITH STANDARD CROWN



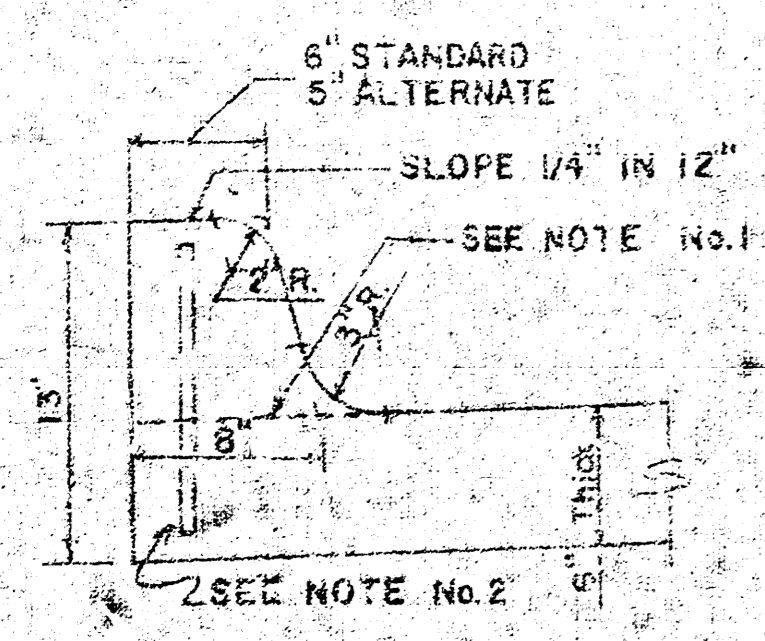
TYPICAL SECTION WITH ALTERNATE CROWN



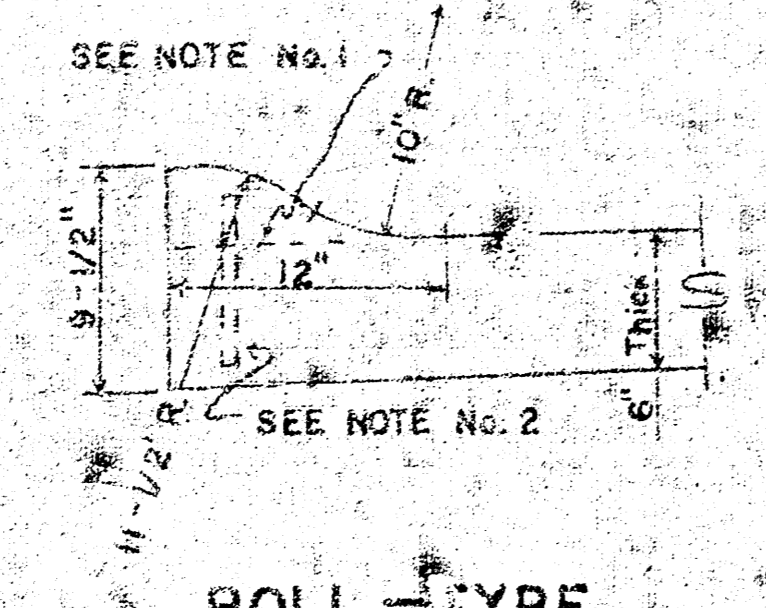
STEEL PATTERN



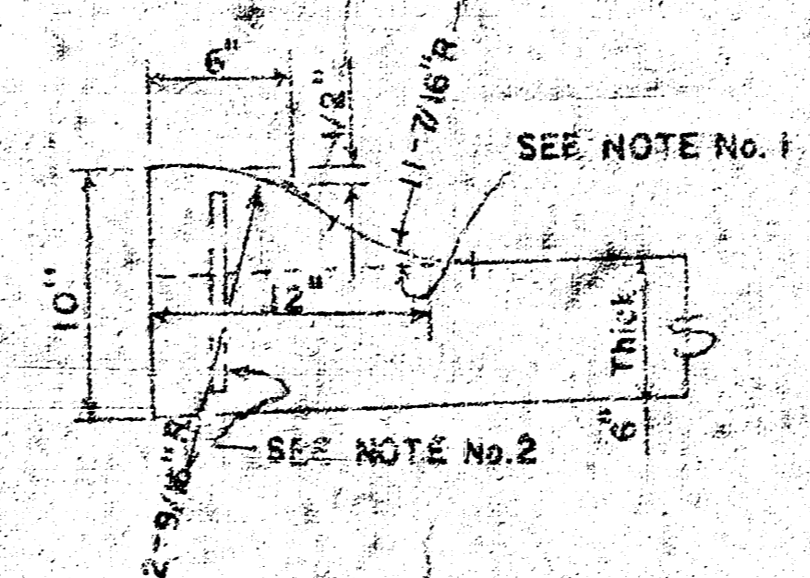
STEEL PATTERN



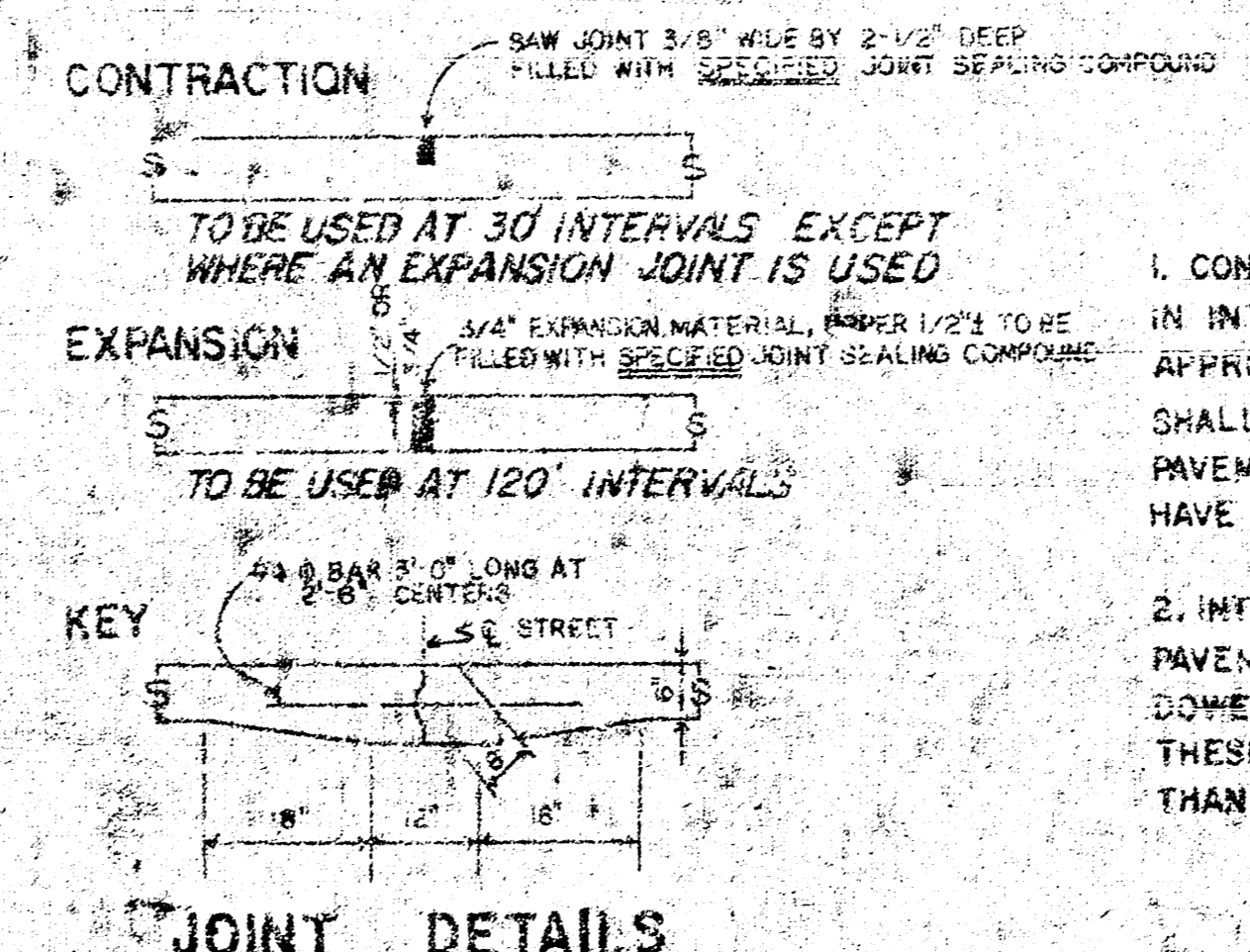
INTEGRAL CURB



ROLL TYPE



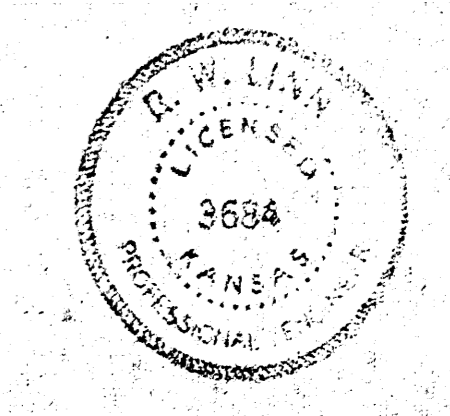
ALTERNATE ROLL-TYPE



JOINT DETAILS

GENERAL NOTES

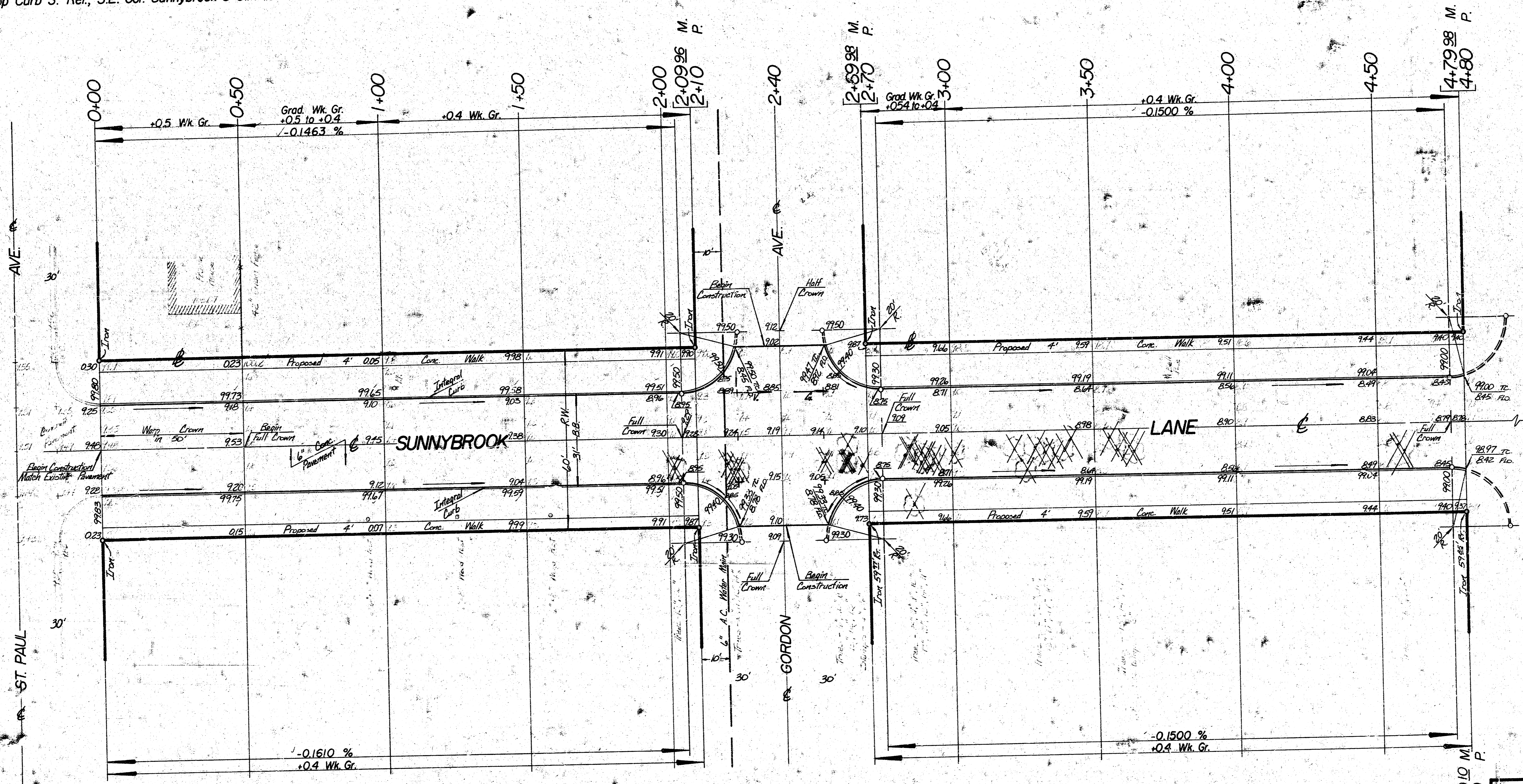
- CONTRACTION JOINTS MAY BE CONSTRUCTED IN INTEGRAL CURB BY SAWING WITH AN APPROVED CONCRETE SAW. THE SAW CUT SHALL EXTEND THROUGH THE CURB TO THE PAVEMENT. SAWED CONTRACTION JOINTS SHALL HAVE A MAXIMUM SPACING OF 10'.
- INTEGRAL CURB SHALL BE TIED TO THE PAVEMENT BASE WITH SHORT DEFORMED DOWEL BARS SPACED AT 2'-6" INTERVALS. THESE DOWEL BARS SHALL NOT BE LESS THAN 1/2" OR MORE THAN 3/4" IN DIAMETER.



CITY OF WICHITA, KANSAS
 Department of Public Works, Engineering Division
 R.W. Linn, City Engineer
 Date: _____ Project No. DAKS 575039

FILMED FROM THE BEST AVAILABLE COPY

Baseline is N. R. Sunnybrook Lane.
 B. M. 99.85' Top Curb S. Ret., S.E. Cor. Sunnybrook & St. Paul.



Survey ZLWZ Bk. 216.9
 Plan H. SWAY
 E.C.
 Checked

Property	Earthwork	Quantities	City
Exc. = 548.5 c.y.	Comp. Fill = 62.8 c.y.	Exc. = 148.2 c.y.	Comp. Fill = 23 c.y.
+10% = 54.9 c.y.	+10% = 6.3 c.y.	+10% = 14.8 c.y.	+10% = 2.2 c.y.
Total = 603.4 c.y.	Total = 69.1 c.y.	Total = 163.0 c.y.	Total = 25 c.y.

Manipulation
 Property City
 23100 c.y. 7032 c.y.

- = Tree Removal
- = Tree Removal To Be Decided By Engineer

NOTE: TYPE OF SUB-GRADE AND PAVEMENT SHALL BE DETERMINED BY THE FIELD ENGINEER. JOBS GRADE TREATMENT SHALL BE DETERMINED BY THE FIELD ENGINEER. CLIENT'S RESPONSIBILITY TO MAINTAIN, SUPPORT OR REPAIR, OR ANY COMBINATION OF THESE.

NOTE TO FIELD ENGINEER: CONTRACTOR SHALL BE RESPONSIBLE FOR THE PROTECTION OF ALL UTILITIES AND STRUCTURES TO REMAIN. ALL UTILITIES AND STRUCTURES TO BE PROTECTED SHALL BE IDENTIFIED BY THE CONTRACTOR AND THE CITY ENGINEER. ALL UTILITIES AND STRUCTURES TO BE PROTECTED SHALL BE IDENTIFIED BY THE CONTRACTOR AND THE CITY ENGINEER.

SUNNYBROOK LANE
 E. L. ST. PAUL AVE. TO W.L. RICHMOND AVE.
 31' CONC. PAVEMENT B-B. W/ INT. CURB
CITY OF WICHITA, KANSAS
 R. W. LINN
 PROJECT NO. CITY ENGINEER
 DATE DAKS 575039

