

SUNRIDGE

FROM THE SOUTH LINE OF 21ST STREET
NORTH TO THE SOUTH LINE OF LOT 12,
BLOCK A, SUNRIDGE ADDITION.

CORNELISON CIRCLE

FROM THE EAST LINE OF SUNRIDGE TO
THE WEST LINE OF LOT 6, BLOCK B,
SUNRIDGE ADDITION.

CITY PROJECT NO. 472-76-245-81879-000-000-001
INDEX NO. 607978

CITY OF WICHITA, KANSAS
M.E. LINDEBAK CITY ENGINEER

April, 1989

NOTE-

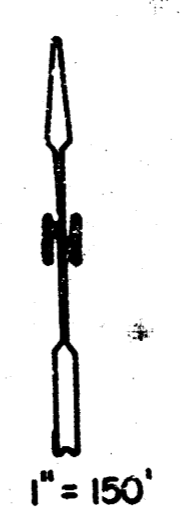
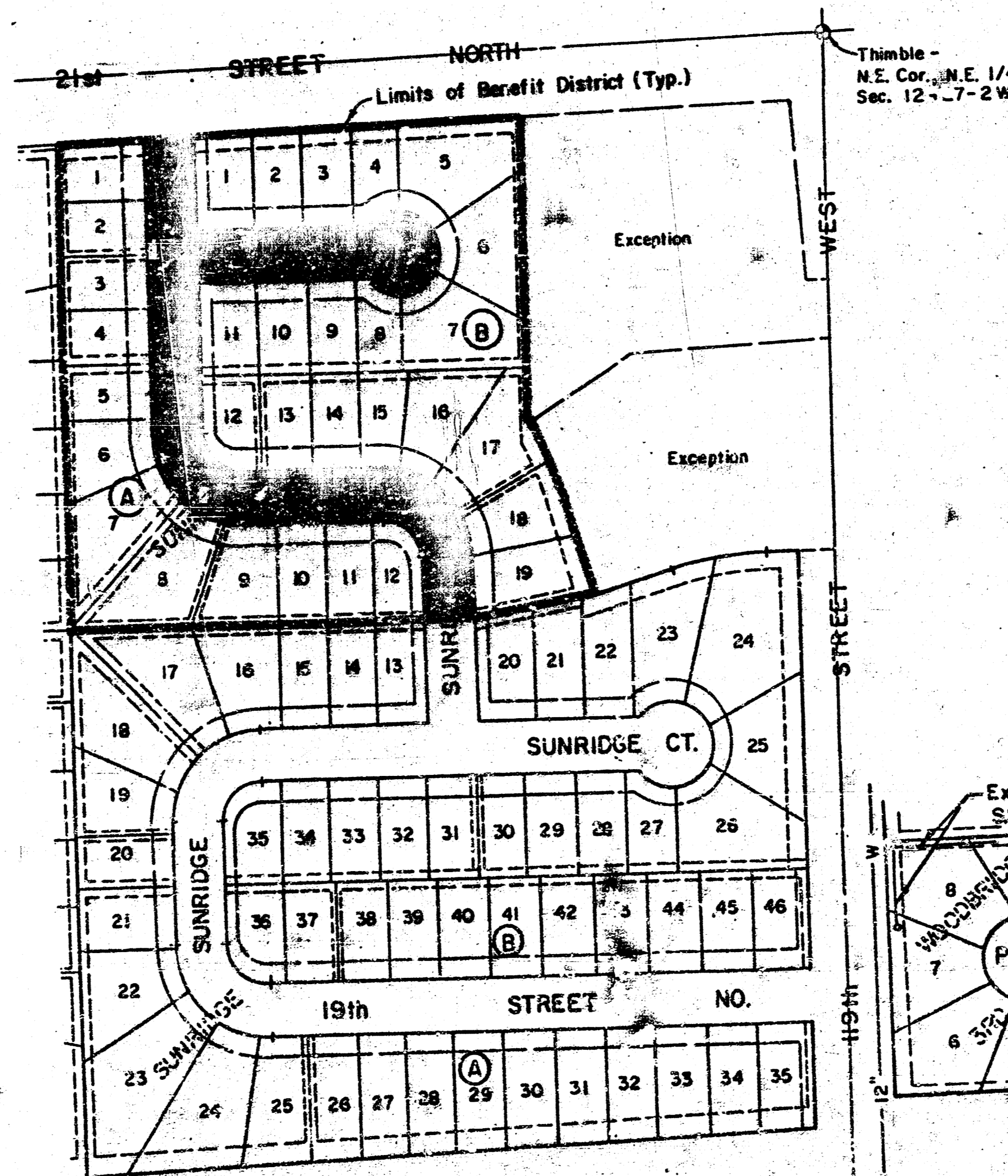
Portions of the streets in this project
to be constructed with roll-type curb.
Top of curb elevations given are for full
height curb.

EARTHWORK QUANTITIES

EXCAVATION = 3,277 C.Y.
COMPACTED FILL = 210 C.Y.

NOTES:

- CONTRACTOR WILL BE REQUIRED TO PROVIDE A MINIMUM ADVANCE NOTICE OF TWENTY-FOUR (24) HOURS TO UTILITY COMPANIES PRIOR TO STARTING ANY EXCAVATION AS FOLLOWS:
KANSAS ONE-CALL 687-2470
THE CONTRACTOR MUST NOTIFY THE FOLLOWING IN CASE OF AN EMERGENCY:
CABLEVISION 262-4270 OR 263-2061
K.P. & L. GAS SERVICE COMPANY 263-7511
KANSAS GAS & ELECTRIC 264-1141
ARLA GAS COMPANY 942-8350 OR 263-8161
SOUTHWESTERN BELL TELEPHONE COMPANY 1-571-2611
CITY OF WICHITA WATER DEPARTMENT 268-4908
CITY OF WICHITA SEWER MAINTENANCE 268-4077
- INTERURBAN TRAFFIC GENERATED OUTSIDE THE PROJECT AREA IS NOT TO BE CARRIED THROUGH CONSTRUCTION.
- EXISTING UTILITIES AND THEIR LOCATION, AS SHOWN ON THE PLANS, REPRESENT THE BEST INFORMATION OBTAINABLE FOR DESIGN. THE CONTRACTOR WILL BE REQUIRED TO WORK AROUND EXISTING UTILITIES WITHIN THE RIGHT-OF-WAY WHICH DO NOT CONFLICT WITH PROPOSED CONSTRUCTION.
- RUBBLE FROM THE REMOVAL OF MISCELLANEOUS STRUCTURES AND EXCESS EXCAVATION WHICH IS TO BE WASTED SHALL BE DISPOSED OF ON SITES TO BE PROVIDED BY THE CONTRACTOR. THESE SITES SHALL BE APPROVED BY THE ENGINEER AS TO SUITABILITY, APPEARANCE AND SITE LOCATION. LOCATIONS THAT, IN THE OPINION OF THE ENGINEER, WILL LEAVE AN UNSIGHTLY APPEARANCE WILL NOT BE APPROVED.
- THIS PROJECT DOES NOT INCLUDE ANY PROVISIONS FOR CONSTRUCTION OF DRIVEWAYS.
- WIDENED GUTTER SECTION OF COMBINED CURB AND GUTTER AT INTERSECTIONS WILL NOT BE PAID FOR DIRECTLY, AND THIS COST SHALL BE CONSIDERED AS SUBSIDIARY TO THE OTHER CONTRACT PAY ITEMS OF WORK.
- LIMITS OF EARTHWORK SHALL MATCH EXISTING GROUND ELEVATIONS AT THE RIGHT-OF-WAY LINE UNLESS OTHERWISE NOTED ON THE PLANS WITH A NEW FINISHED GRADE ELEVATION. WHEN A NEW FINISHED GRADE ELEVATION IS SHOWN, THE EARTHWORK SHALL EXTEND ONE FOOT BEYOND THE RIGHT-OF-WAY LINE AND THEN SLOPED UP OR DOWN USING PERMISSIBLE SLOPES TO MATCH THE EXISTING GROUND SURFACE.
- CONTRACTOR SHALL GIVE THE OWNER OF PROPERTY ADJUTING THIS PROJECT, WHOSE YARDS WILL BE LOWER THAN THE NEW FINISHED GRADE ELEVATIONS AT THE RIGHT-OF-WAY LINE, AN OPPORTUNITY TO UTILIZE EXCESS EXCAVATED MATERIAL FROM THE PROJECT TO REGRADE THOSE YARDS TO DRAIN TO THE NEW PAVEMENT. CONTRACTOR WILL BE REQUIRED TO DUMP AND SPREAD THE EXCESS MATERIAL AS REQUIRED BY THE SPECIFICATIONS WHEN REQUESTED BY THE PROPERTY OWNER. THE CONTRACTOR SHALL BE FURNISHED A WRITTEN REQUEST FROM THE PROPERTY OWNER BEFORE ANY SUCH EXCESS MATERIAL IS DELIVERED TO SUCH PROPERTIES.
- THE CONTRACTOR WILL BE PERMITTED TO BID ONLY ONE OF THE ALTERNATE TYPES OF SUB-GRADE TREATMENT. THE TYPE BID BY THE SUCCESSFUL BIDDER WILL BE THE TYPE OF SUB-GRADE TREATMENT USED TO CONSTRUCT THE PROJECT.
- THE CONTRACTOR SHALL BE RESPONSIBLE FOR PRESERVING PROPERTY IRONS. THE CONTRACTOR WILL BE REQUIRED TO RE-ESTABLISH ANY PROPERTY IRONS WHICH ARE DAMAGED OR DESTROYED BY HIS CONSTRUCTION OPERATIONS. SUCH IRONS SHALL BE RE-ESTABLISHED BY A LICENSED LAND SURVEYOR IN ACCORDANCE WITH STATE LAWS.
- THE WATER DEPARTMENT SHALL FIELD LOCATE WATER VALVES ONE TIME DURING CONSTRUCTION WHEN REQUESTED BY THE CONTRACTOR. IT SHALL BE THE CONTRACTOR'S RESPONSIBILITY TO PRESERVE SUCH FIELD LOCATIONS DURING THE CONSTRUCTION PROCESS. WATER VALVES, WATER VALVE BOXES OR FIRE HYDRANTS DAMAGED DURING CONSTRUCTION SHALL BE REPAIRED BY THE CONTRACTOR AT HIS OWN EXPENSE.
- THE CONTRACTOR SHALL ADJUST WATER VALVE BOXES AS DIRECTED BY THE ENGINEER. THIS WORK TO BE SUBSIDIARY TO OTHER BID ITEMS.
- INLET HOOKUPS SHALL BE BID PER EACH REGARDLESS OF INLET SIZE.



- BENCHMARKS:** (CITY DATUM)
- CITY DISC, 79' SOUTH & 46' EAST OF NE CORNER SEC. 12, T27S, R24. ELEV. = 172.08
 - CHISELED "C" ON CTR. SOUTH HUBGUARD, 7' X 3' RCBC UNDER 21ST N. 470' WEST OF NW COR. SUNRIDGE ADDITION. ELEV. = 164.08

INDEX

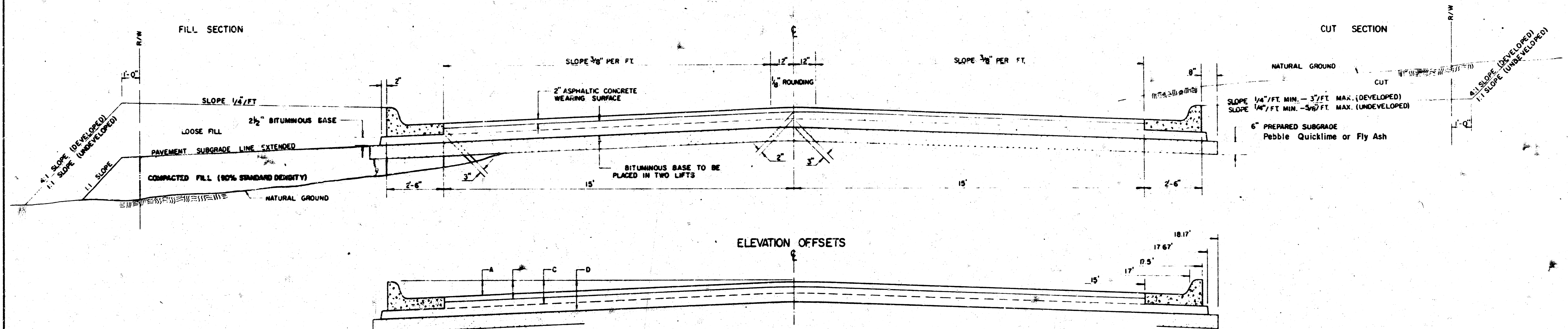
Sheet No.	Description.
1.	Cover Sheet
2.	Recorded Plat - Sunridge
3.	Pavement Standards
4-5	Sunridge Plans
6.	Cornelson Circle Plan
7.	Valley Gutter Details
8-12	Cross Sections

MOEHRING & ASSOCIATES
CONSULTING ENGINEERS
WICHITA

FILMED FROM THE BEST
AVAILABLE COPY

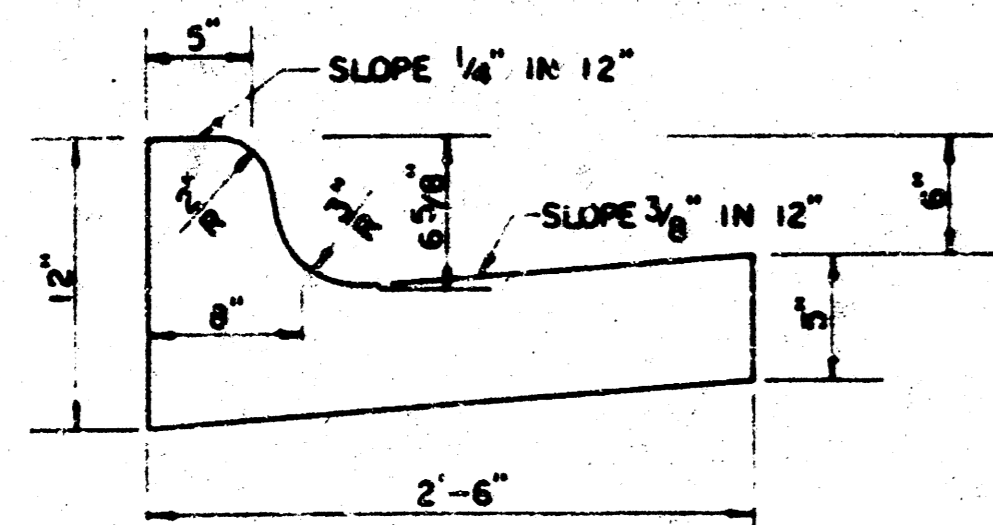
TYPICAL 35' PAVEMENT DETAILS

TRANSVERSE SECTION

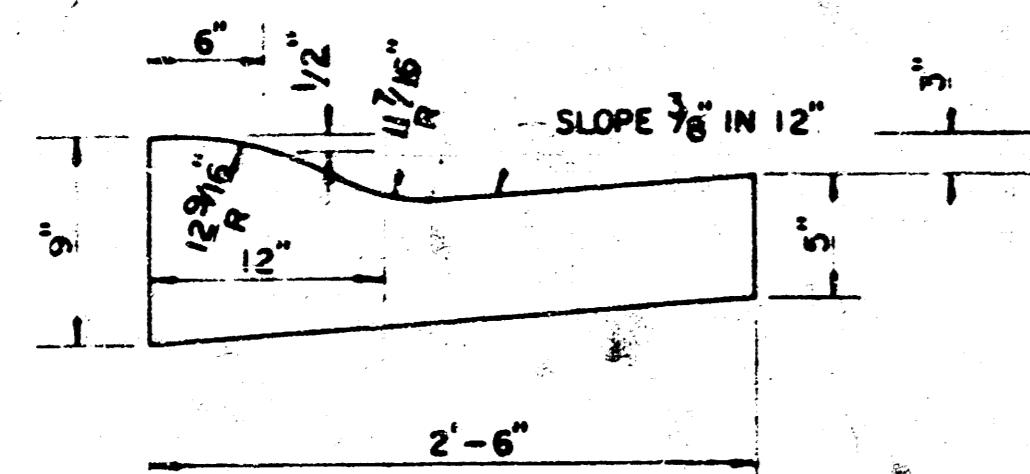


	DISTANCE FROM CENTERLINE (LT. & RT.)												
	0'	2'	4'	6'	8.5'	10'	12'	14'	15'	17'	17.5'	17.67'	18.17'
A: TOP OF CURBS TO TOP OF SURFACE LIFT	0.04	0.08	0.14	0.21	0.29	0.33	0.39	0.46	0.49	—	—	—	—
B: TOP OF CURBS TO TOP OF UPPER BASE LIFT	0.21	0.25	0.31	0.37	0.45	0.50	0.56	0.62	0.65	—	—	—	—
C: TOP OF CURBS TO TOP OF LOWER BASE LIFT	0.37	0.43	0.50	0.57	0.67	0.72	0.79	0.87	0.90	0.98	1.00	1.00	—
D: TOP OF CURBS TO TOP OF SUBGRADE	0.62	0.67	0.74	0.81	0.90	0.95	1.02	1.08	1.12	1.19	1.21	1.21	1.23

COMBINED CURB & GUTTER



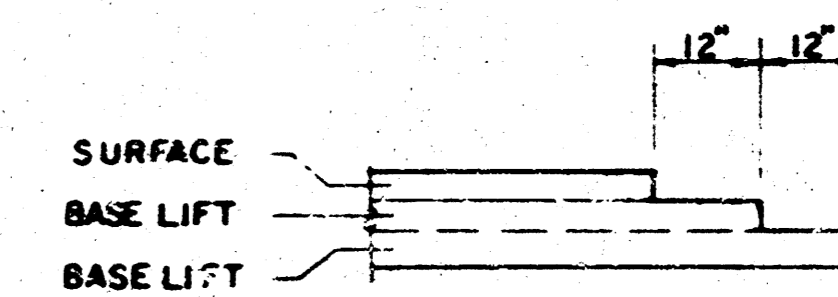
ROLL TYPE COMBINED CURB & GUTTER



GENERAL NOTES

- 1) THE ASPHALTIC CONCRETE PAVEMENT BETWEEN THE COMBINED CURB AND GUTTER SHALL BE PAID AS SQUARE YARDS OF 7" ASPHALTIC CONCRETE (5" BITUMINOUS BASE).
- 2) THE BITUMINOUS BASE UNDER AND BEHIND THE COMBINED CURB AND GUTTER SHALL BE PAID AS SQUARE YARDS OF 2 1/2" BITUMINOUS BASE.
- 3) A TACK COAT OF EMULSIFIED ASPHALT (SC-1H OR CSS-1H) SHALL BE APPLIED AT AN APPROXIMATE RATE OF 0.05 GALLONS PER SQUARE YARD BETWEEN EACH LIFT OF ASPHALTIC MATERIAL.
- 4) BITUMINOUS BASE AND ASPHALTIC CONCRETE WEARING SURFACE SHALL BE PLACED WITH A LAYDOWN MACHINE HAVING AUTOMATIC CONTROLS FOR LINE AND GRADE.
- 5) CONSTRUCTION JOINTS IN EACH LIFT SHALL BE STAGGERED A MINIMUM DISTANCE OF ONE (1) FOOT FROM JOINTS IN PRECEDING LIFTS AND PLACED SO THAT A JOINT WILL BE CONSTRUCTED ON THE CENTERLINE OF THE TOP LIFT.
- 6) CONTRACTOR TO BID ONLY ONE SUBGRADE TREATMENT ALTERNATE WHEN ALTERNATES ARE PROVIDED IN THE PROPOSAL AND CONTRACT. THE ALTERNATE CHOSEN BY THE SUCCESSFUL BIDDER SHALL BE USED IN CONSTRUCTING THIS PROJECT.

TRANSVERSE CONSTRUCTION JOINTS



TRANSVERSE CONSTRUCTION JOINTS SHALL BE PLACED AT THE FOLLOWING DISTANCES FROM THE CENTERLINE OF THE ROADWAY: 0.04, 0.21, 0.37, 0.50, 0.62, 0.72, 0.79, 0.87, 0.90, 0.98, 1.00, 1.00, 1.21, 1.21, 1.23 FEET. THE JOINTS SHALL BE PLACED AT THE CENTERLINE OF THE ROADWAY. THE JOINTS SHALL BE PLACED AT THE CENTERLINE OF THE ROADWAY. THE JOINTS SHALL BE PLACED AT THE CENTERLINE OF THE ROADWAY.

7 INCH RESIDENTIAL ASPHALTIC CONCRETE PAVEMENT WITH 5 INCH BITUMINOUS BASE
CITY OF WICHITA, KANSAS

PROJECT NUMBER

Sheet 3 of 12

FILMED FROM THE BEST AVAILABLE COPY



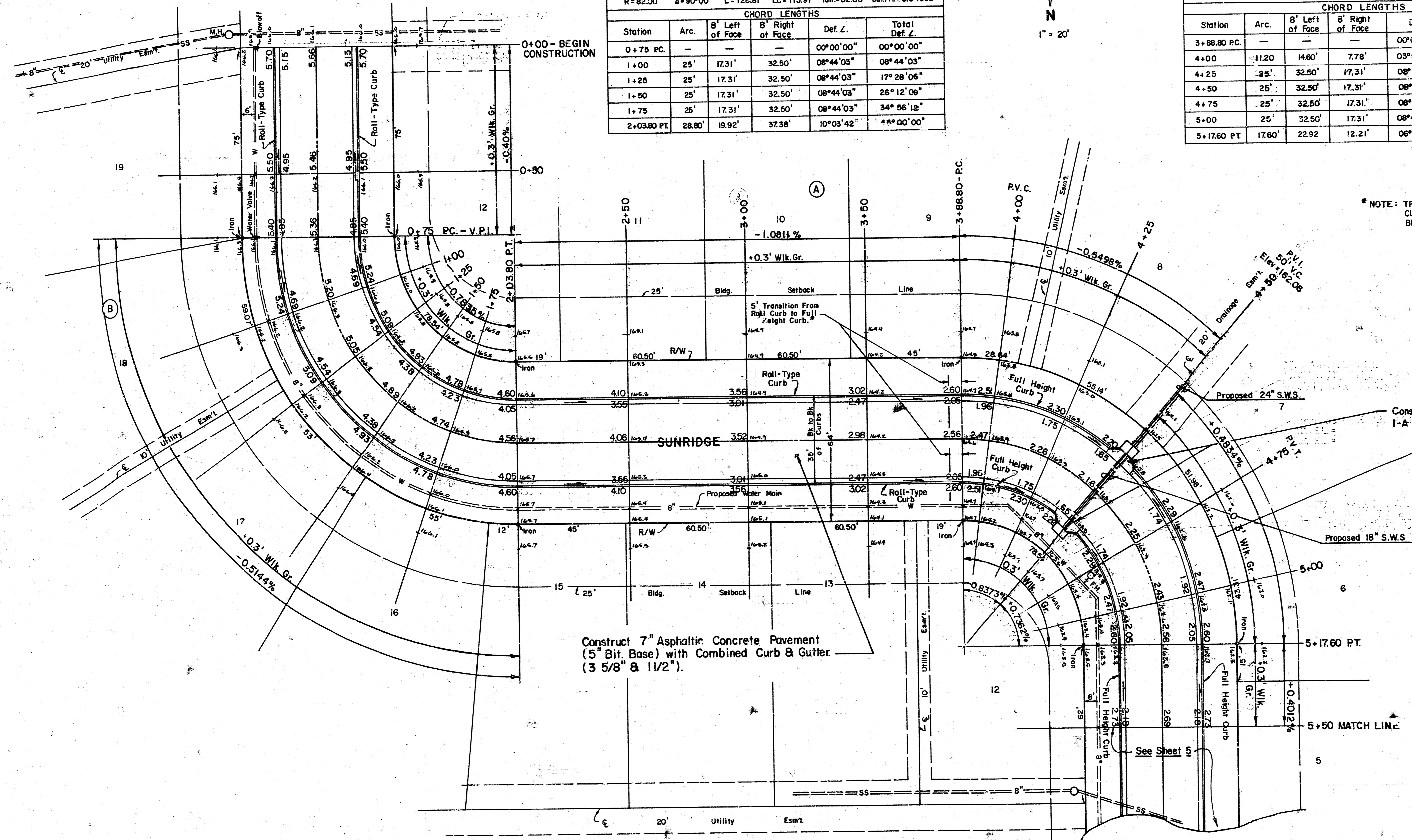
Curve Data Based On ϵ

CHORD LENGTHS					
Station	Arc.	B' Left of Face	B' Right of Face	Def. \angle .	Total Def. \angle .
0+75 PC.	—	—	—	00°00'00"	00°00'00"
1+00	25'	17.31'	32.50'	08°44'03"	08°44'03"
1+25	25'	17.31'	32.50'	08°44'03"	17°28'06"
1+50	25'	17.31'	32.50'	08°44'03"	26°12'09"
1+75	25'	17.31'	32.50'	08°44'03"	34°56'12"
2+03.80 PT.	28.80'	19.92'	37.38'	10°03'42"	44°00'00"

Curve Data Based On ϵ

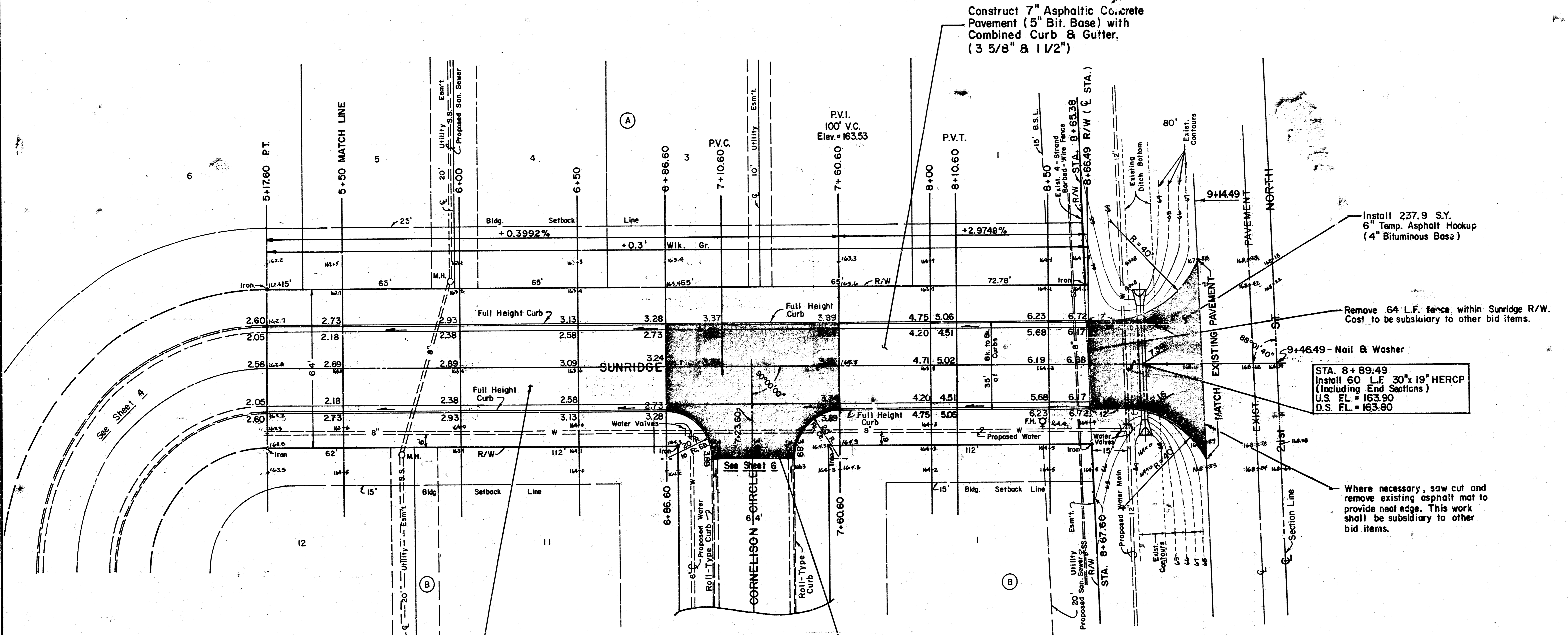
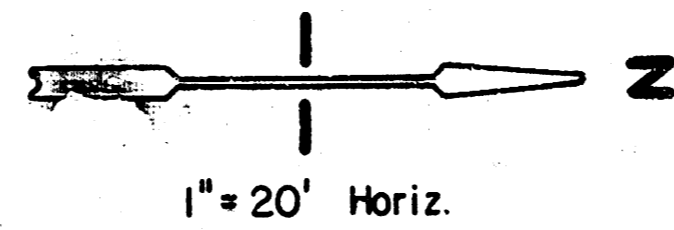
CHORD LENGTHS					
Station	Arc.	B' Left of Face	B' Right of Face	Def. \angle .	Total Def. \angle .
3+88.80 PC.	—	—	—	00°00'00"	00°00'00"
4+00	11.20'	14.60'	7.78'	03°54'46"	03°54'46"
4+25	25'	32.50'	17.31'	08°44'03"	12°38'49"
4+50	25'	32.50'	17.31'	08°44'03"	21°22'52"
4+75	25'	32.50'	17.31'	08°44'03"	30°06'55"
5+00	25'	32.50'	17.31'	08°44'03"	38°50'58"
5+17.60 PT.	17.60'	22.92'	12.21'	06°08'56"	44°00'00"

* NOTE: TRANSITION FROM FULL HEIGHT CURB TO ROLL-TYPE CURB SHALL BE PAID AS ROLL-TYPE CURB.



SUNRIDGE
 From The S. Line of Lot 12, Blk. "A"
 To The N. Line of Lot 6, Blk. "A".
SUNRIDGE ADDITION
 Phase I
 MOEHRING & ASSOCIATES
 CONSULTING ENGINEERS
 WICHITA

FILMED FROM THE BEST AVAILABLE COPY



Construct 7" Asphaltic Concrete Pavement (5" Bit. Base) with Combined Curb & Gutter. (3 5/8" & 1 1/2")

Install 237.9 S.Y. 6" Temp. Asphalt Hookup (4" Bituminous Base)

Remove 64 L.F. fence within Sunridge R/W. Cost to be subsidiary to other bid items.

9+46.49 - Nail & Washer
 STA. 8+89.49
 Install 60 L.F. 30"x19" HERCP (Including End Sections)
 U.S. FL = 163.90
 D.S. FL = 163.80

Where necessary, saw cut and remove existing asphalt mat to provide neat edge. This work shall be subsidiary to other bid items.

Construct 7" Asphaltic Concrete Pavement (5" Bit. Base) with Combined Curb & Gutter (6 5/8" & 1 1/2")

Construct 7" Valley Gutter with Monolithic Edge Curb. 5" Reinf. Conc. with 2" Bit. Base.

NOTE: Adjustment of water valves and/or fire hydrants will not be paid for directly, but merged into the price bid for earthwork.

WATER VALVE TABLE

STREET	STATION	DISTANCE FROM C&G		EXIST. ELEV.	PROPOSED ELEV.
		RT.	LT.		
SUNRIDGE	0+00	26'	-	-	165.3
	0+75	26'	-	-	165.4
	4+80.16	24.87'	-	-	162.5
	6+95.6	26'	-	-	163.7
	6+97.6	28'	-	-	163.7
	8+47.6	24.87'	-	-	166.4
CORNELSON CIRCLE	8+80.6	26'	-	-	166.0
	8+82.6	24'	-	-	166.0
CORNELSON CIRCLE	2+51.17	-	39.75'	-	165.6

INTERSECTION QUANTITIES

- 246.67 S.Y. 7" Asphaltic Conc. Pavement (5" Bituminous Base)
- 21.95 S.Y. 2 1/2" Bituminous Base
- 74.0 L.F. Combined Curb & Gutter
- 62.83 L.F. Monolithic Edge Curb
- 391.74 S.Y. Manipulation
- 114.52 S.Y. V.G. 5" Concrete & 2" Bituminous Base

SUNRIDGE

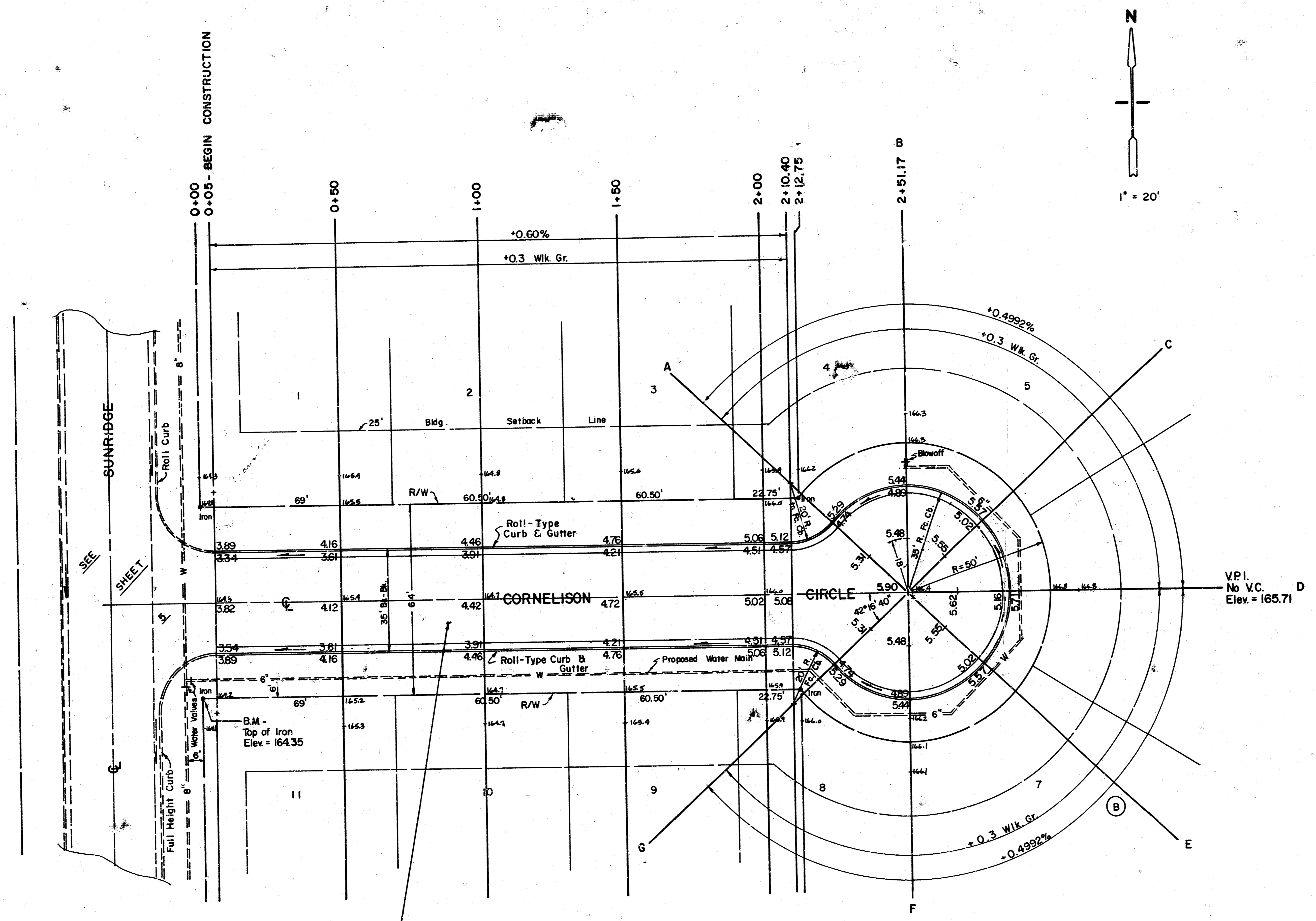
From The North Line of Lot 6, Blk. "A" To The South R/W of 21 ST. ST. North.

SUNRIDGE ADDITION

Phase I

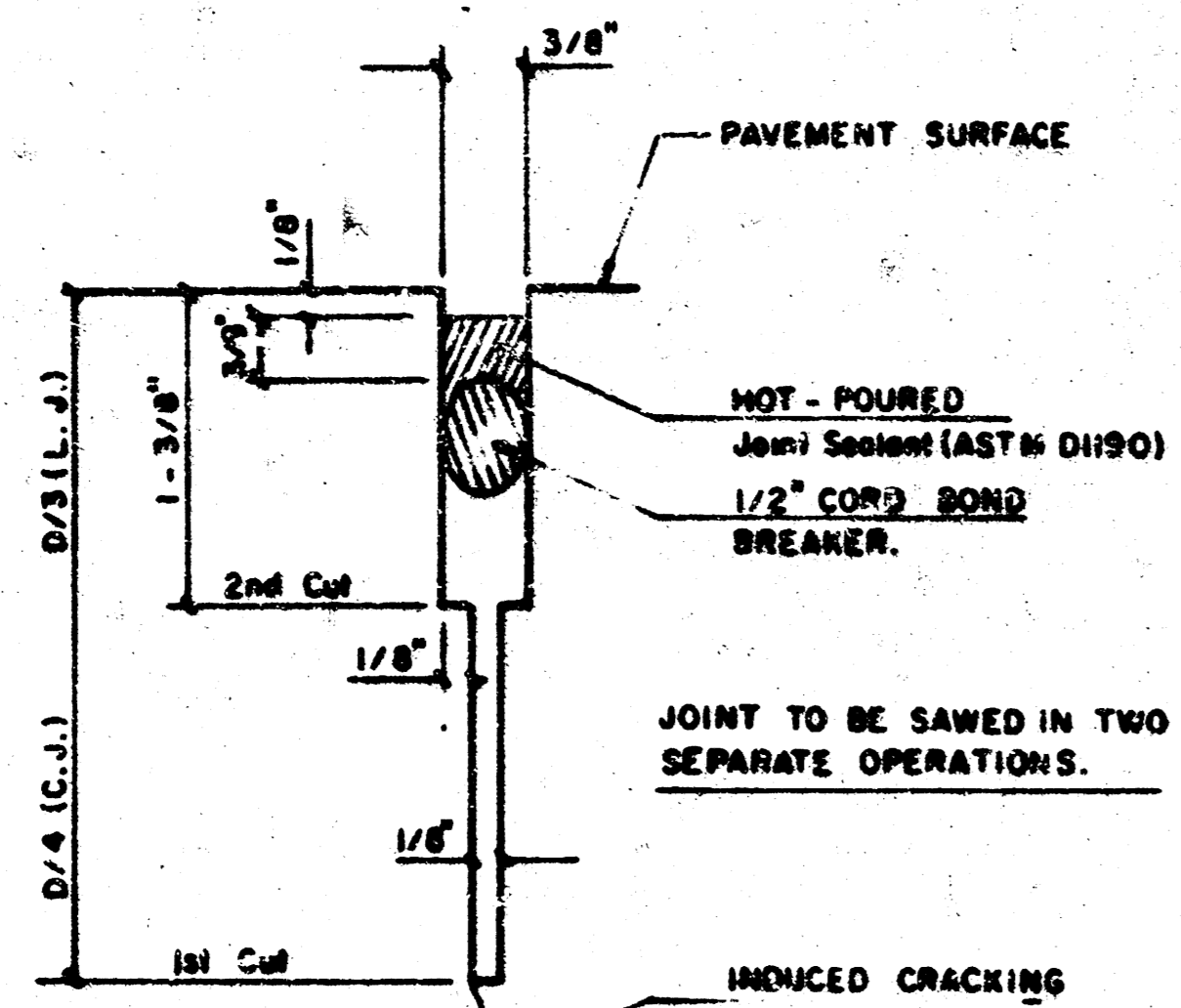
MOHRING & ASSOCIATES
CONSULTING ENGINEERS
WICHITA

FILMED FROM THE BEST AVAILABLE COPY

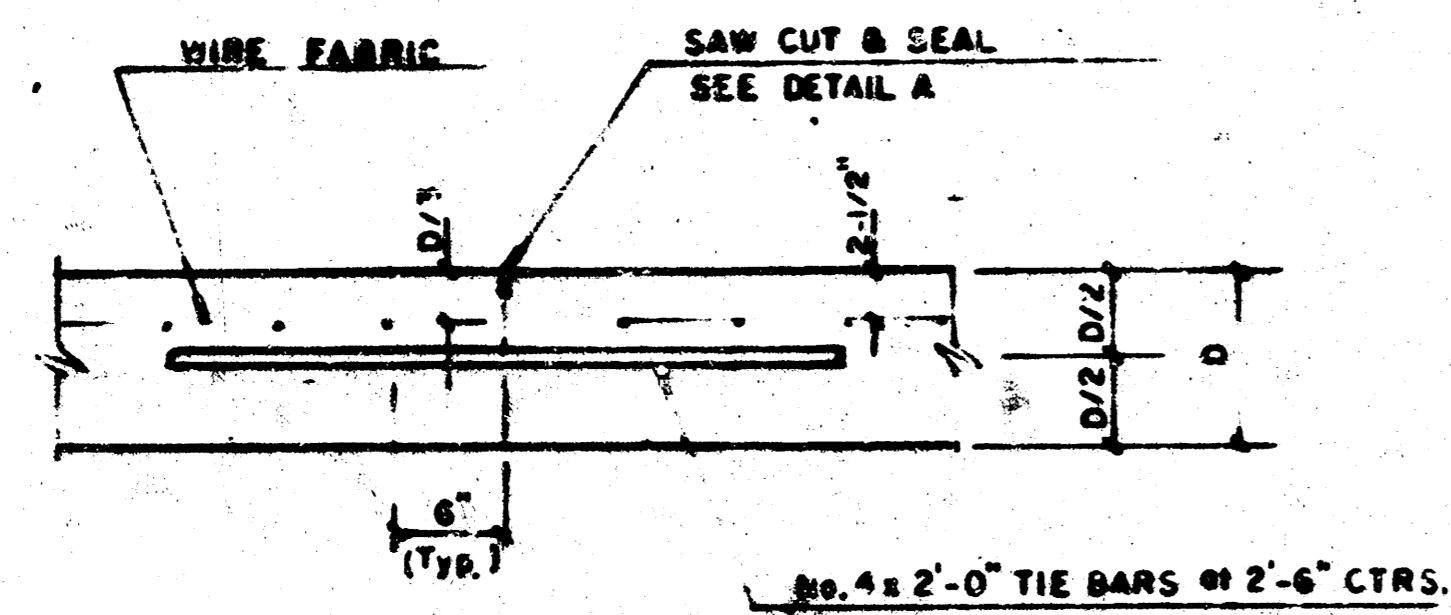


CORNELISON CIRCLE
 From The E. Line Sunridge, 301.17' East.
 SUNRIDGE ADDITION
 Phase I
 MOEHRING & ASSOCIATES
 CONSULTING ENGINEERS
 WICHITA

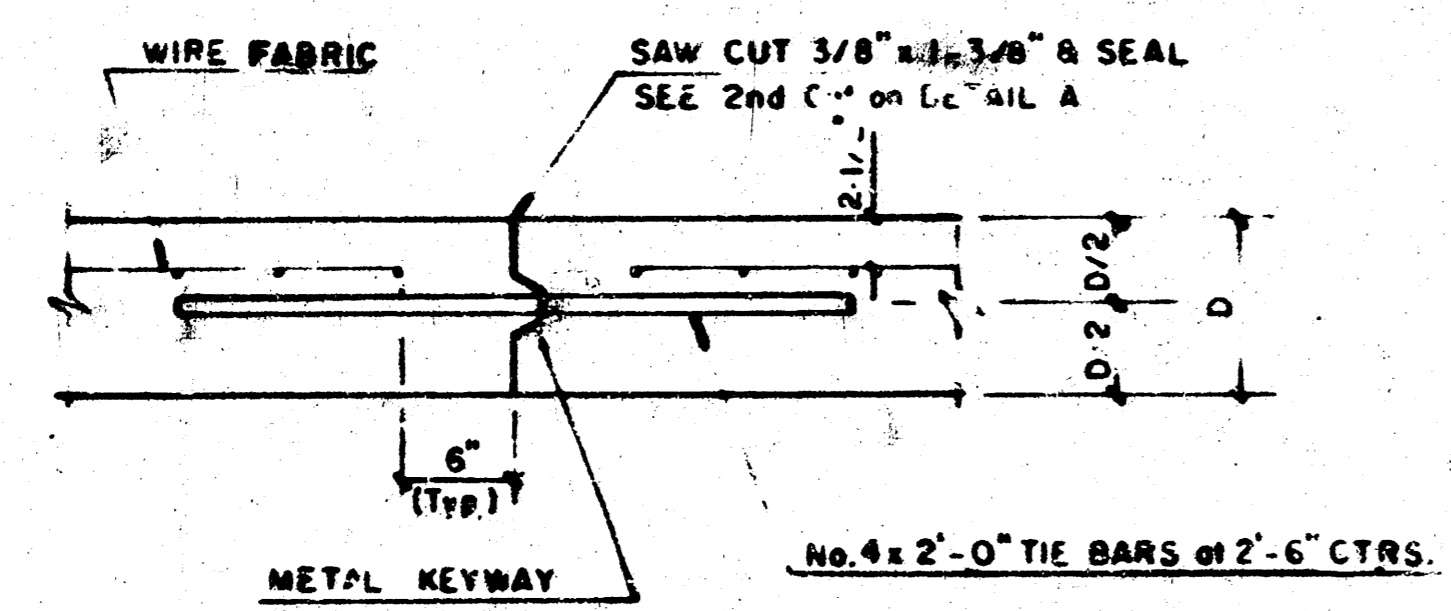
FILMED FROM THE BEST AVAILABLE COPY



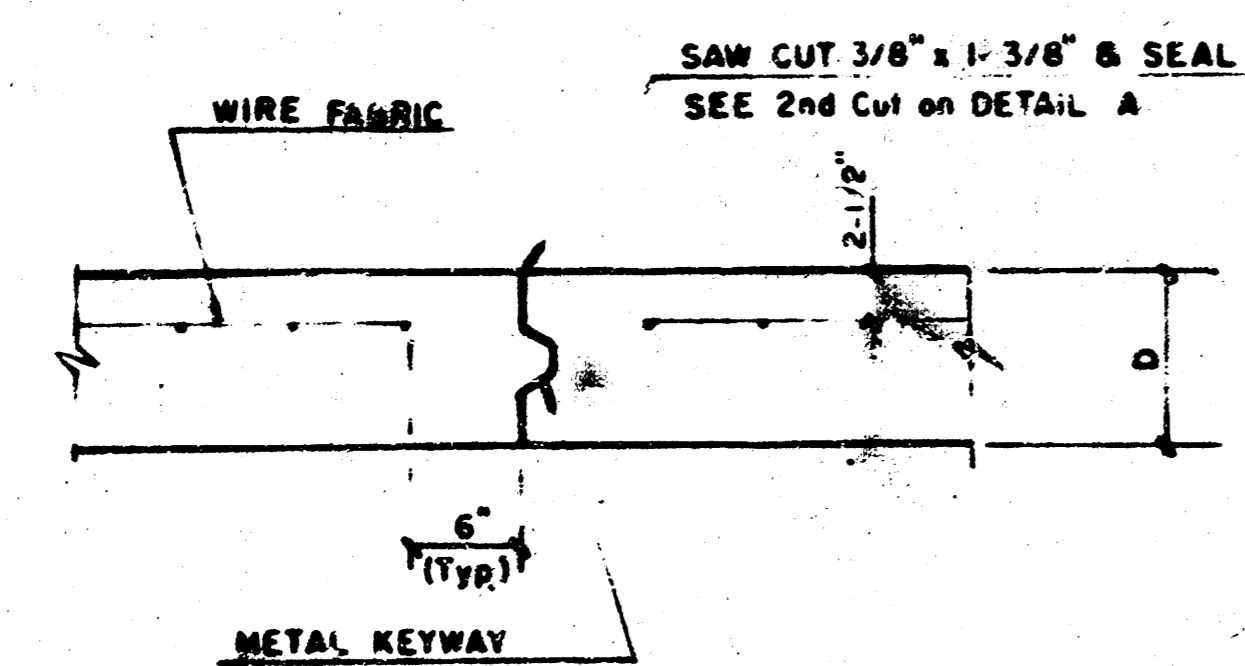
DETAIL A



LONGITUDINAL JOINT DETAIL (L.J.)

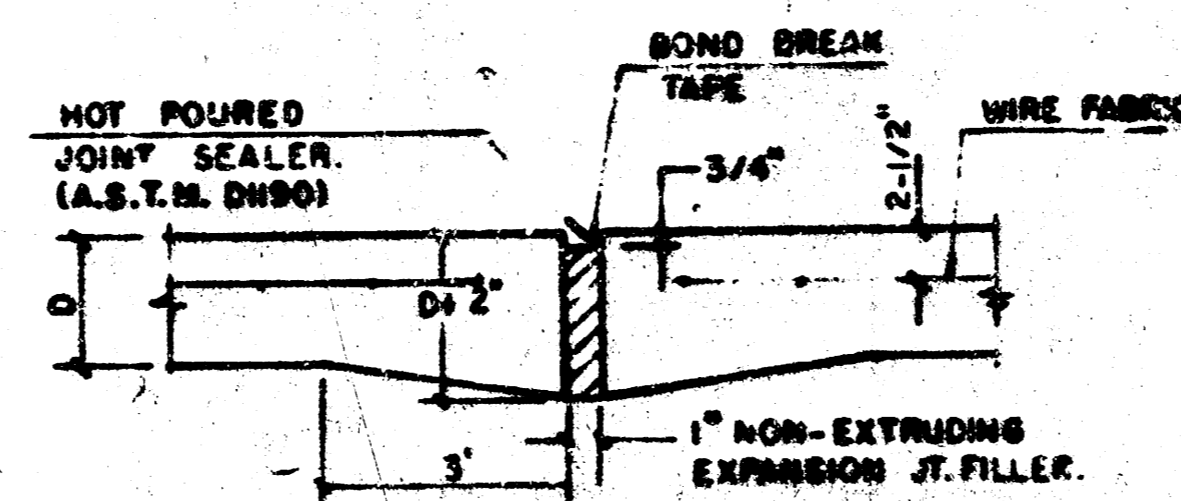


OPTIONAL LONGITUDINAL CONSTRUCTION JOINT (L.J.) (Alternate L.J.)

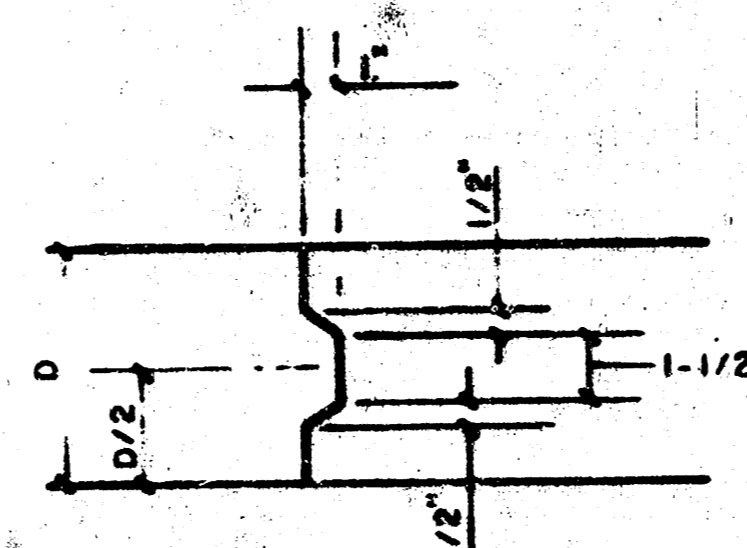


OPTIONAL CONTRACTION CONSTRUCTION JOINT (C.J.) (Alternate C.J.)

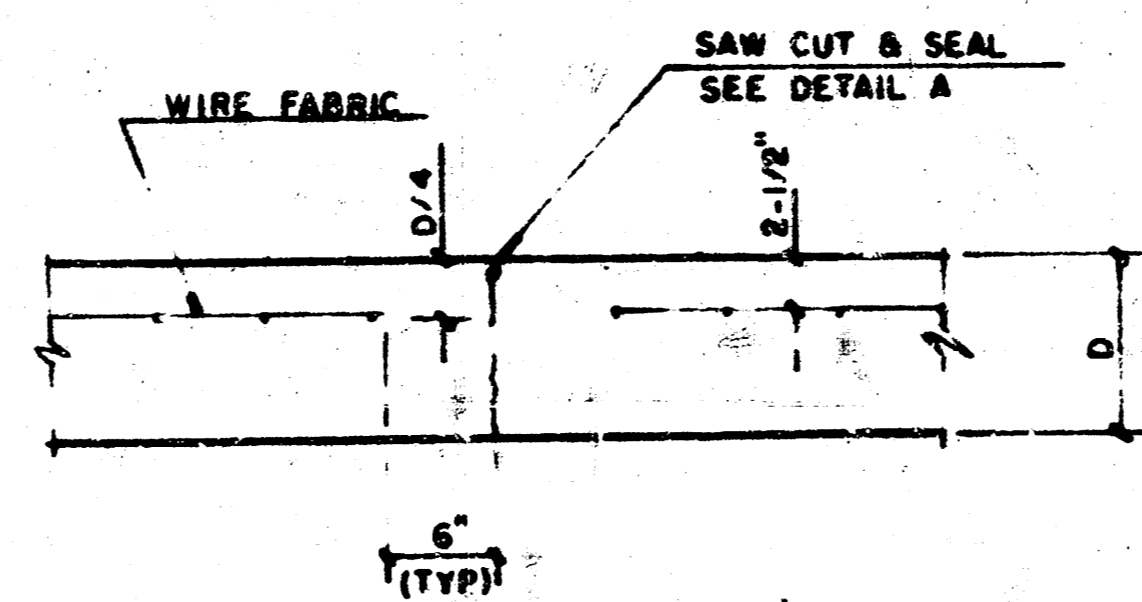
NOTE: ALL CONCRETE VALLEY GUTTER REINFORCEMENT SHALL BE ADEQUATELY SUPPORTED BY BAR CHAIRS IN THE REQUIRED POSITION UNLESS APPROVED OTHERWISE BY THE ENGINEER.



EXPANSION JOINT
NOTE: EXTRA THICKNESS TO BE SUBSIDIARY TO PRICE OF 30 YDS PAVEMENT.

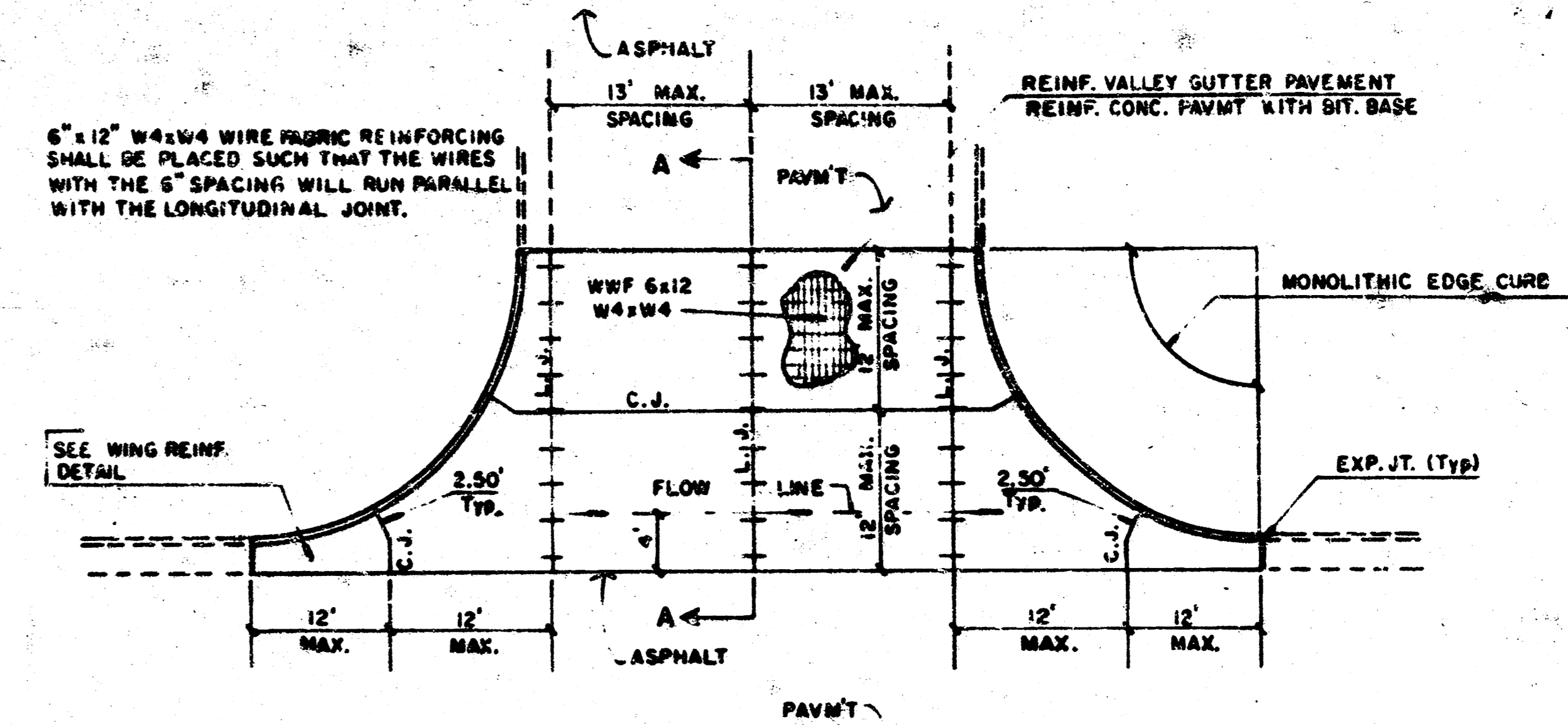


KEYWAY DETAIL

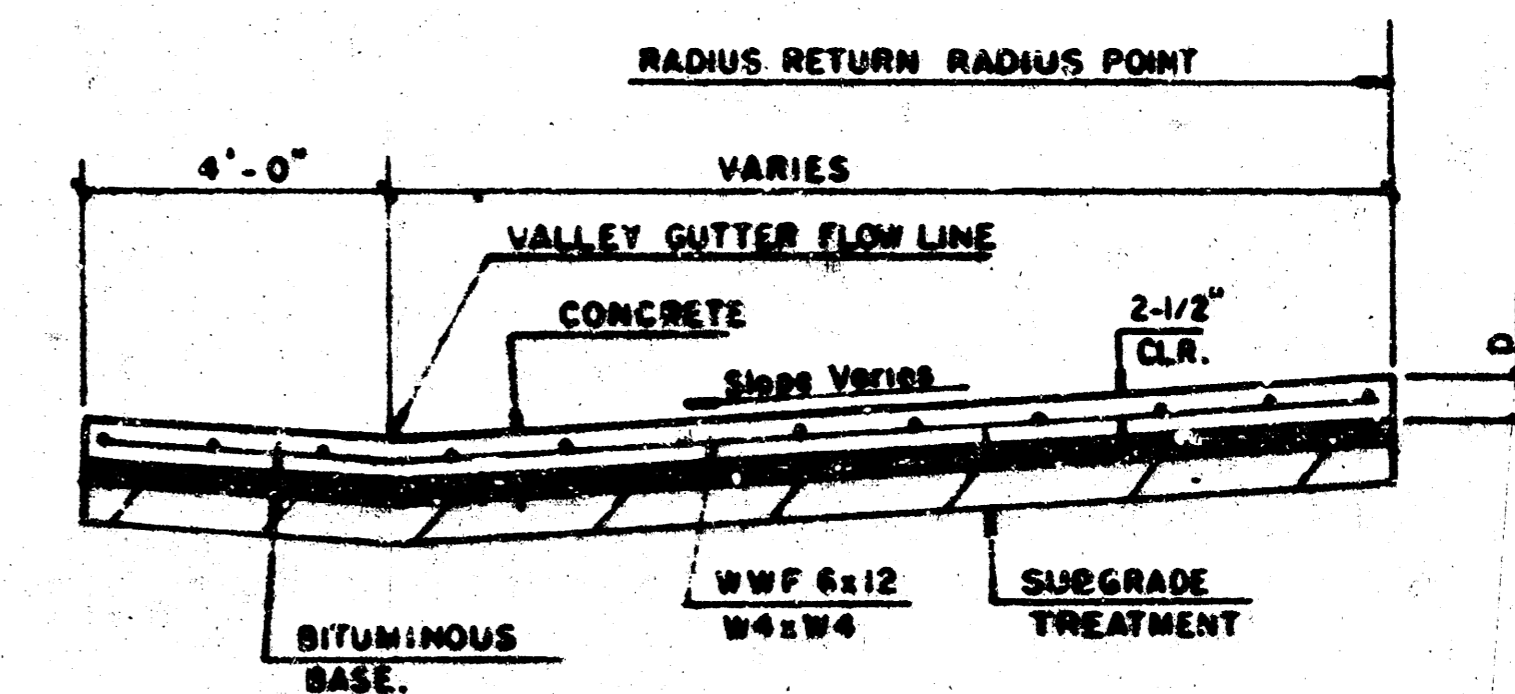


CONTRACTION JOINT DETAIL (C.J.)

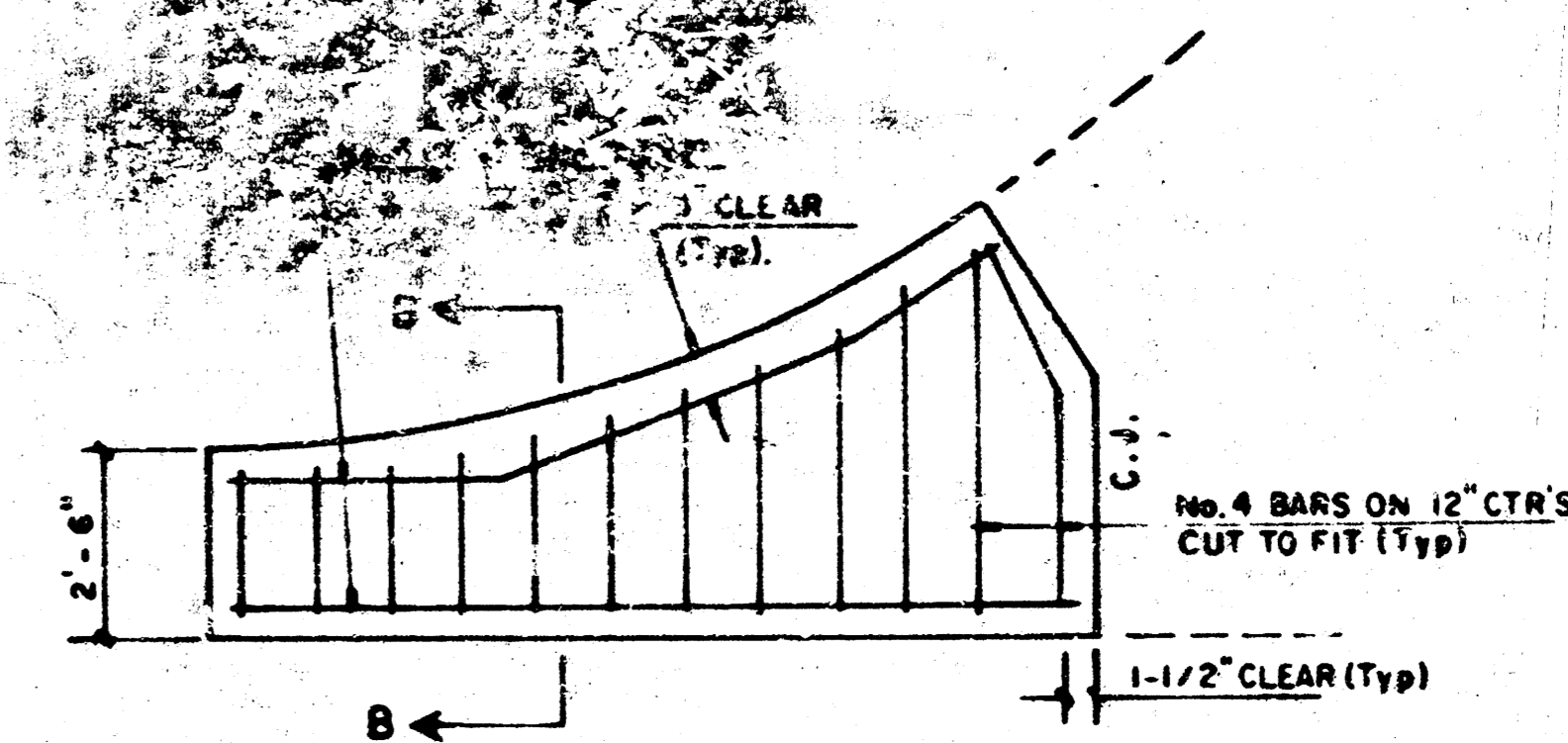
LEGEND
C.J. IDENTIFIES CONTRACTION JOINT
L.J. IDENTIFIES LONGITUDINAL JOINT



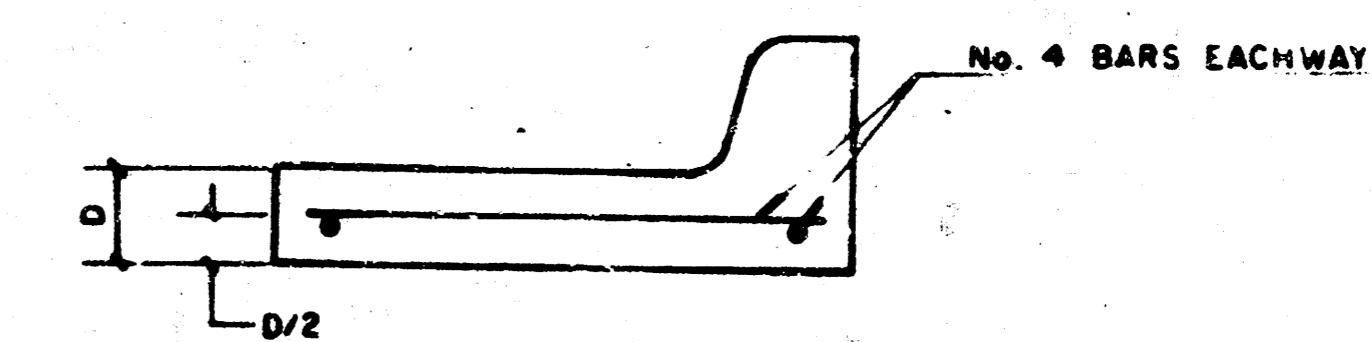
PLAN
REINFORCED VALLEY GUTTER



SECTION A-A



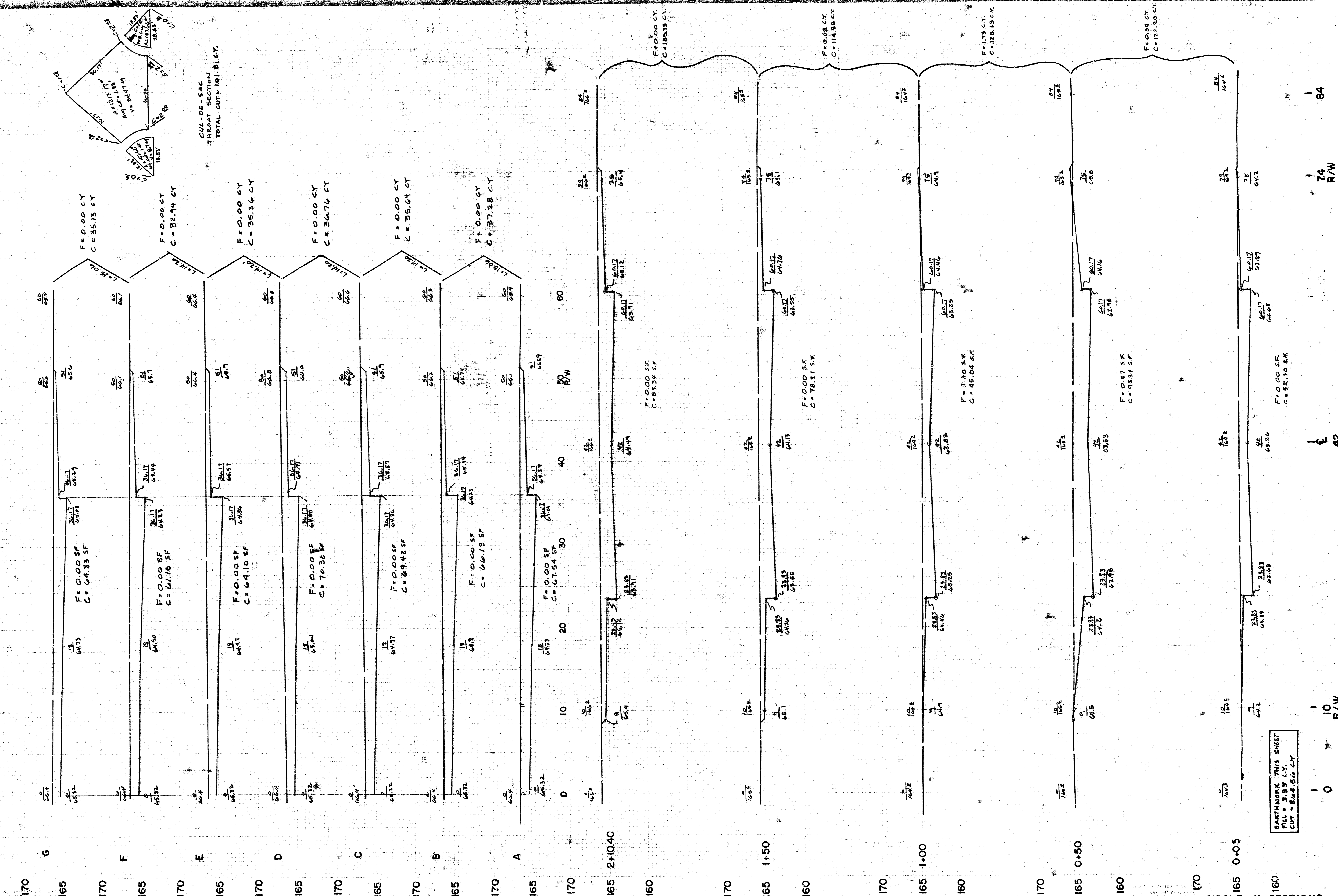
WING REINFORCING DETAIL



SECTION B-B

NOTE: OMIT WIRE FABRIC REINFORCING IN THIS SECTION.

PROJECT DESCRIPTION
VALLEY GUTTER DETAILS
PROJECT NUMBER

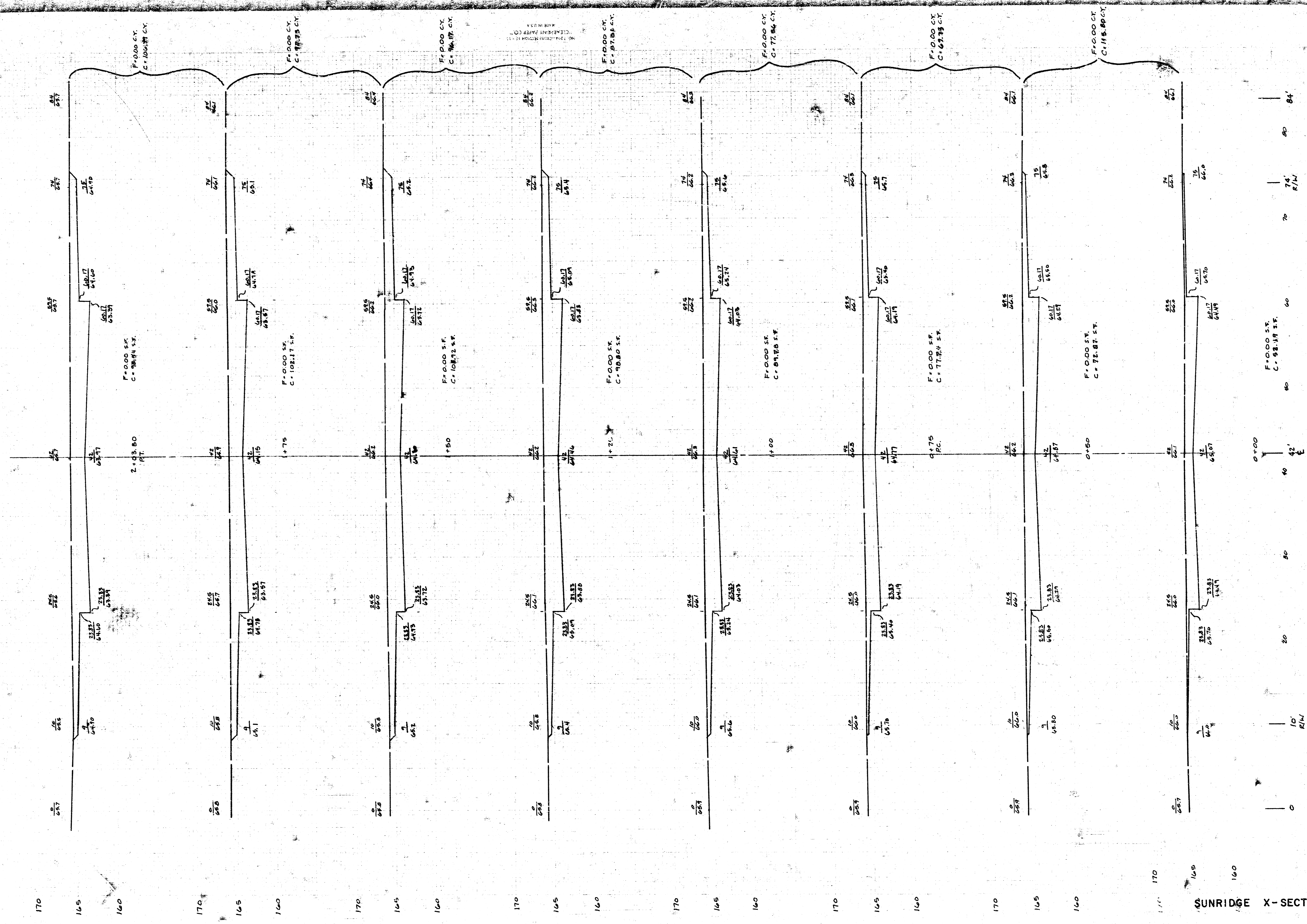


CORNELISON CIRCLE X-SECTIONS
Sheet 8 of 12

FILED FROM THE BEST AVAILABLE COPY

BATHWORK THIS SHEET
FILL = 3.39 CY
CUT = 84.86 CY

0 10 R/W 42 74 R/W 84



SUNRIDGE X-SECTIONS

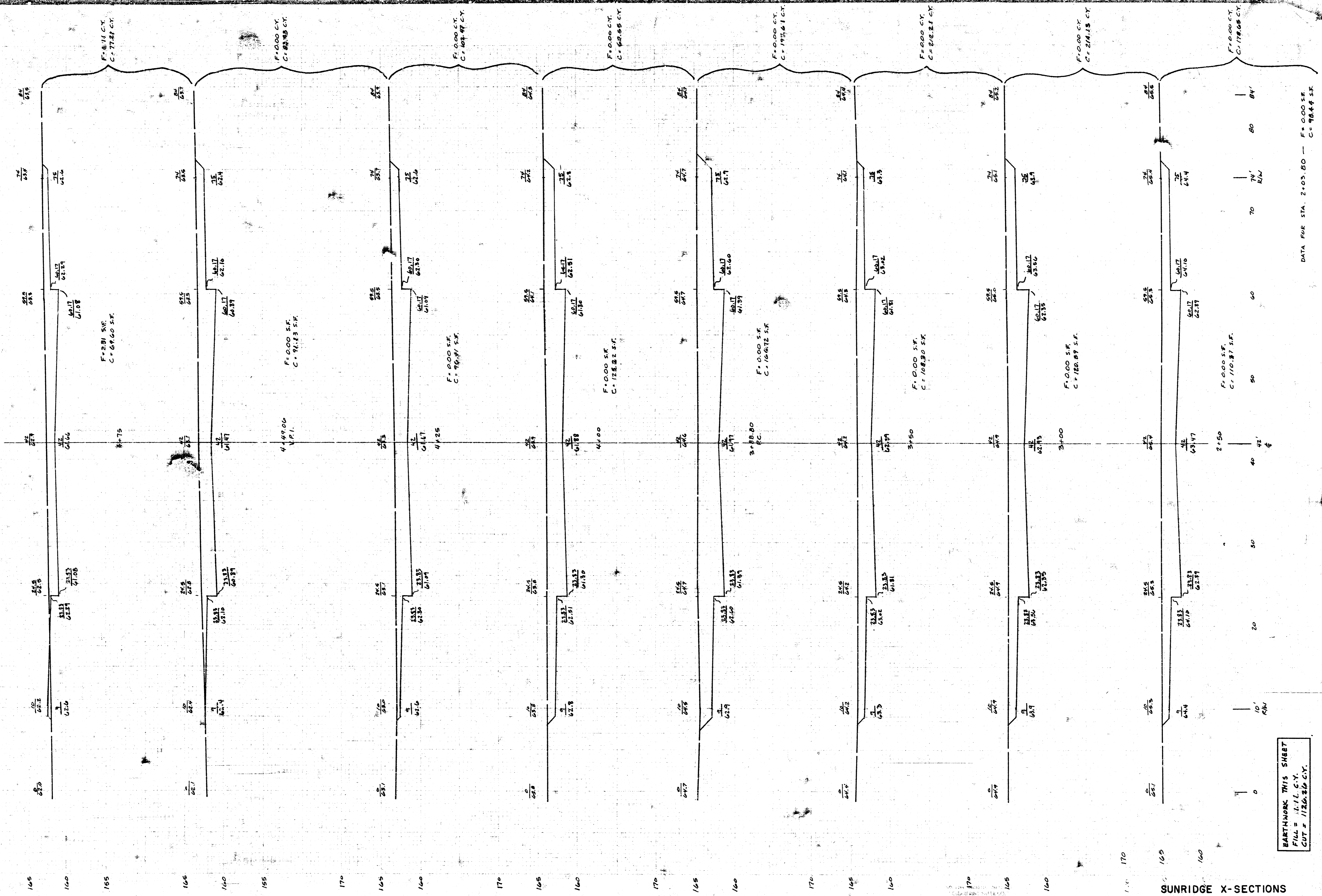
0
 10' R/W
 20
 40
 60
 80
 84'

0+00
 40
 80

0
 10' R/W
 20
 40
 60
 80
 84'

FILMED FROM THE BEST AVAILABLE COPY

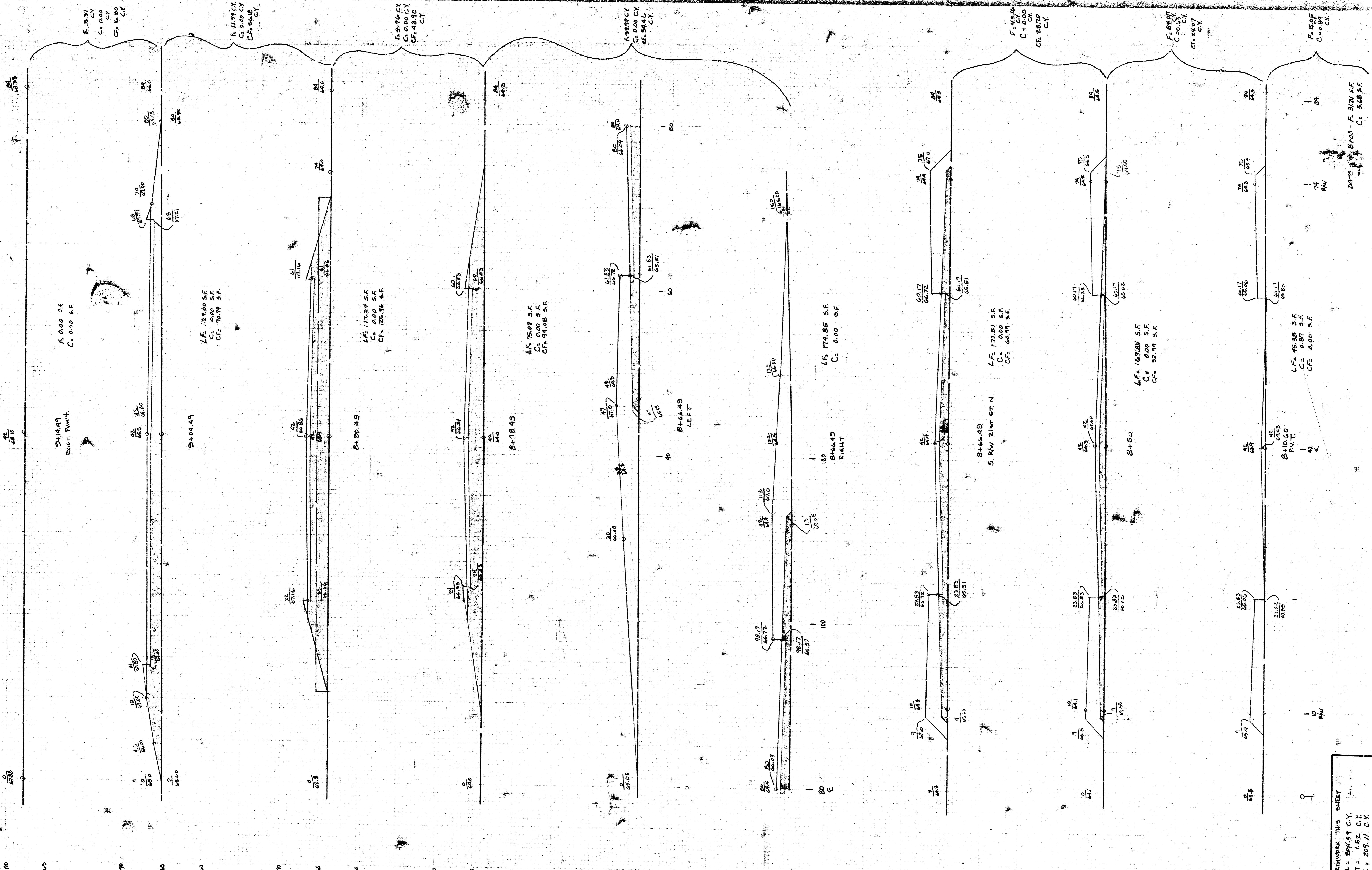
BATHWORK THIS SHEET
 FILL = 0.00 CY
 CUT = 651.29 CY



SUNRIDGE X-SECTIONS

FILMED FROM THE BEST AVAILABLE COPY

BATHMORE THIS SHEET
 FILL = 11.12 C.Y.
 CUT = 112.32 C.Y.



BENCHMARK THIS SHEET
 FILL = 204.59 CY
 CUT = 1.52 CY
 C.F. = 209.17 CY

SUNRIDGE X-SECTIONS
 Sheet 12 of 12

FILMED FROM THE BEST AVAILABLE COPY