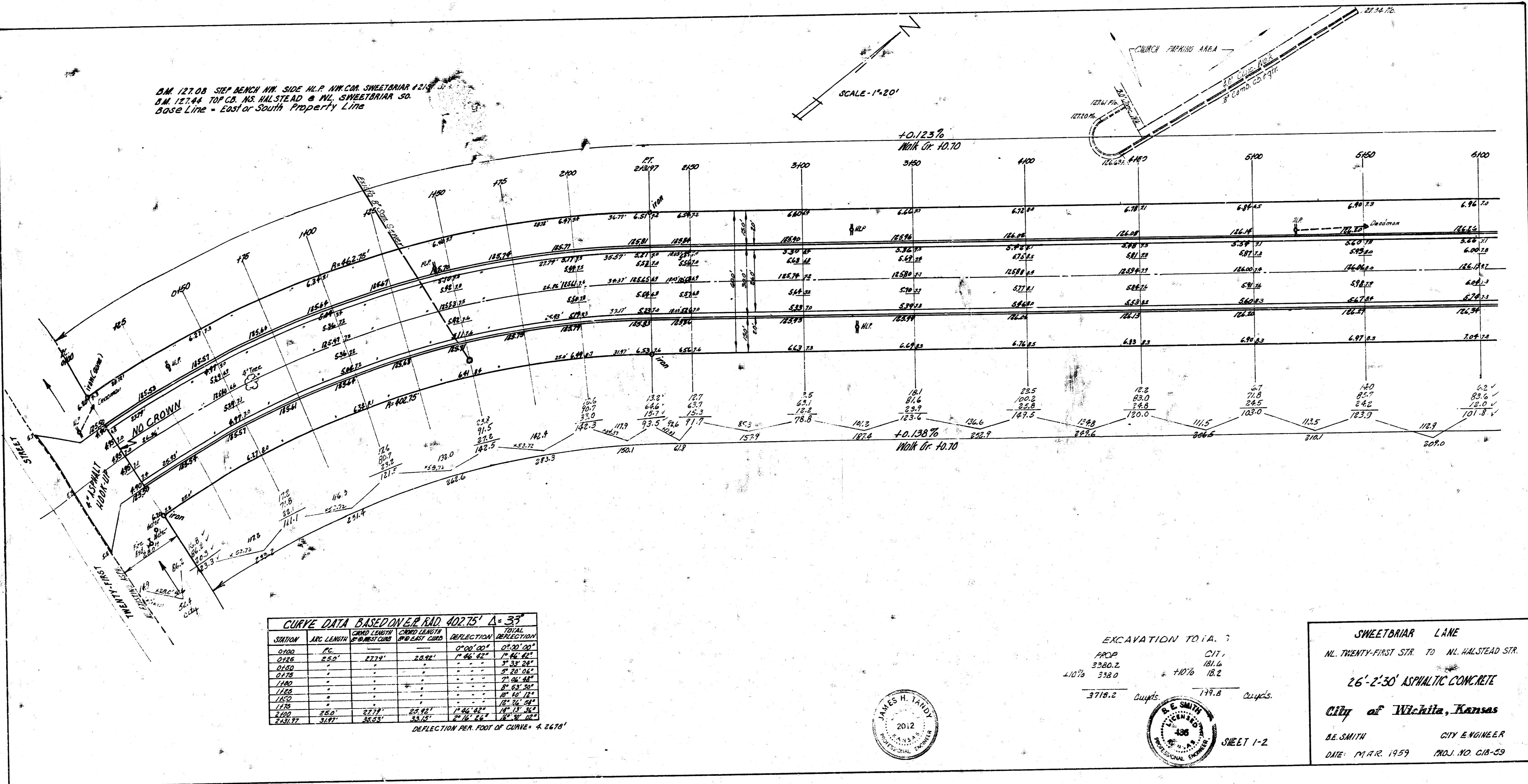
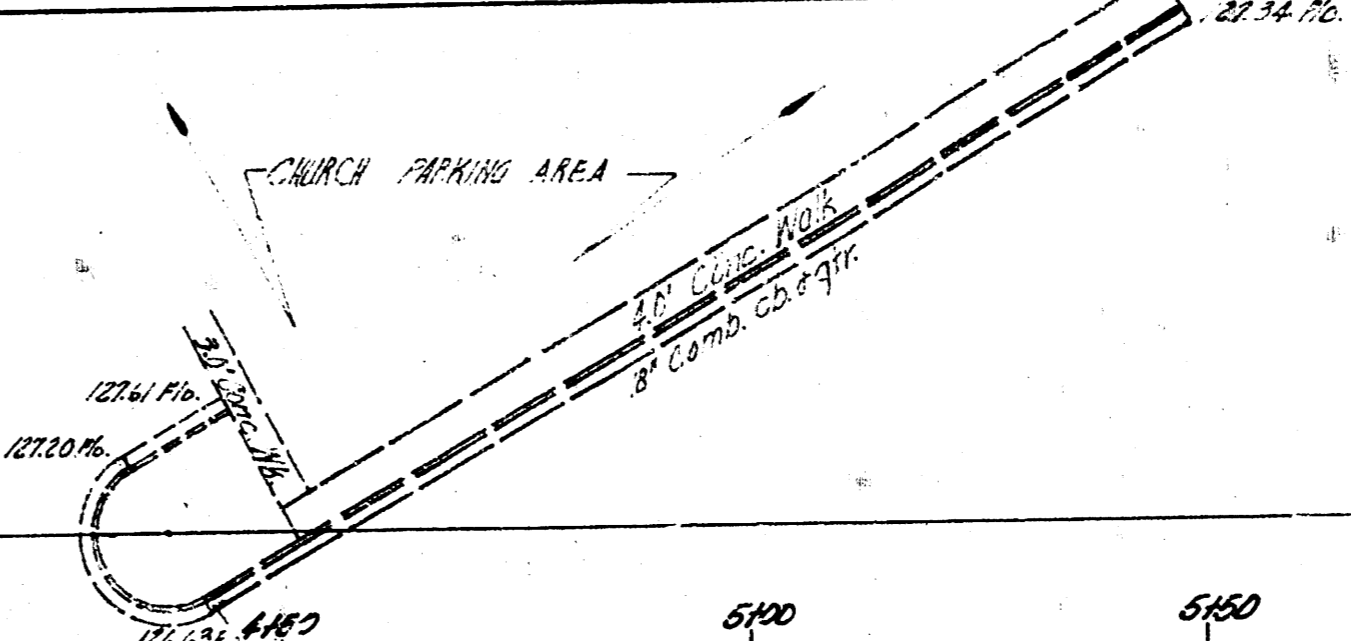
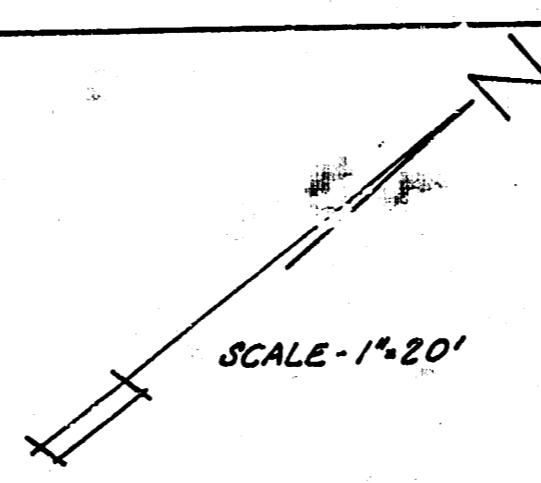


D.M. 127.08 SEE BENCH NW. SIDE N.W. COR. SWEETBRIAR 1218 1/2  
 I.M. 127.44 TOP CO. N.E. HALSTEAD @ N.W. SWEETBRIAR 30.  
 Base Line - East or South Property Line



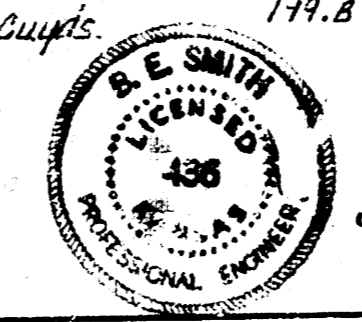
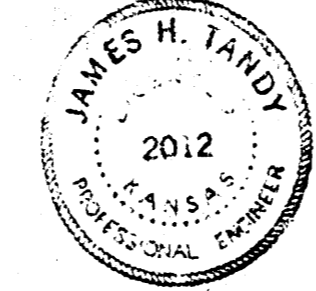
REVISIONS  
 1-10-59  
 2-16-59

STATION	ARC LENGTH	CHORD LENGTH	CHORD BEARING	DEFLECTION	TOTAL DEFLECTION
0+00	76'	76.0'	S 89° 59' 59" W	1° 00' 00"	1° 00' 00"
0+76	76.0'	152.0'	S 89° 59' 59" W	2° 00' 00"	3° 00' 00"
1+52	76.0'	228.0'	S 89° 59' 59" W	3° 00' 00"	6° 00' 00"
2+28	76.0'	304.0'	S 89° 59' 59" W	4° 00' 00"	10° 00' 00"
3+04	76.0'	380.0'	S 89° 59' 59" W	5° 00' 00"	15° 00' 00"
3+80	76.0'	456.0'	S 89° 59' 59" W	6° 00' 00"	21° 00' 00"
4+56	76.0'	532.0'	S 89° 59' 59" W	7° 00' 00"	28° 00' 00"
5+32	76.0'	608.0'	S 89° 59' 59" W	8° 00' 00"	36° 00' 00"
6+08	76.0'	684.0'	S 89° 59' 59" W	9° 00' 00"	45° 00' 00"
6+84	76.0'	760.0'	S 89° 59' 59" W	10° 00' 00"	55° 00' 00"

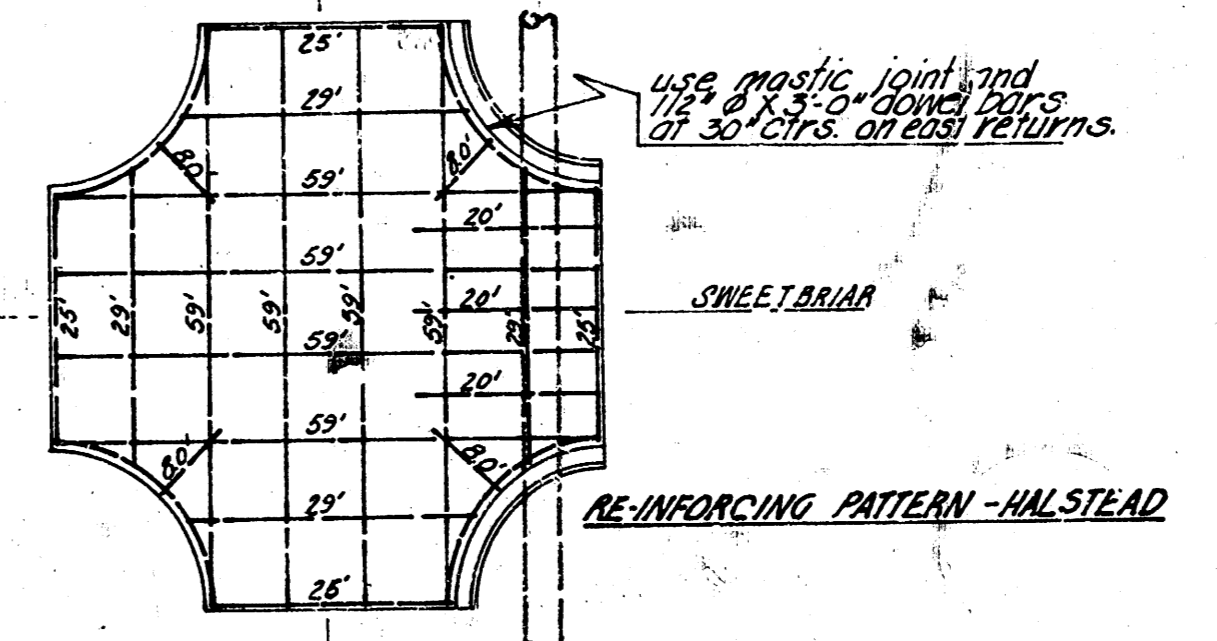
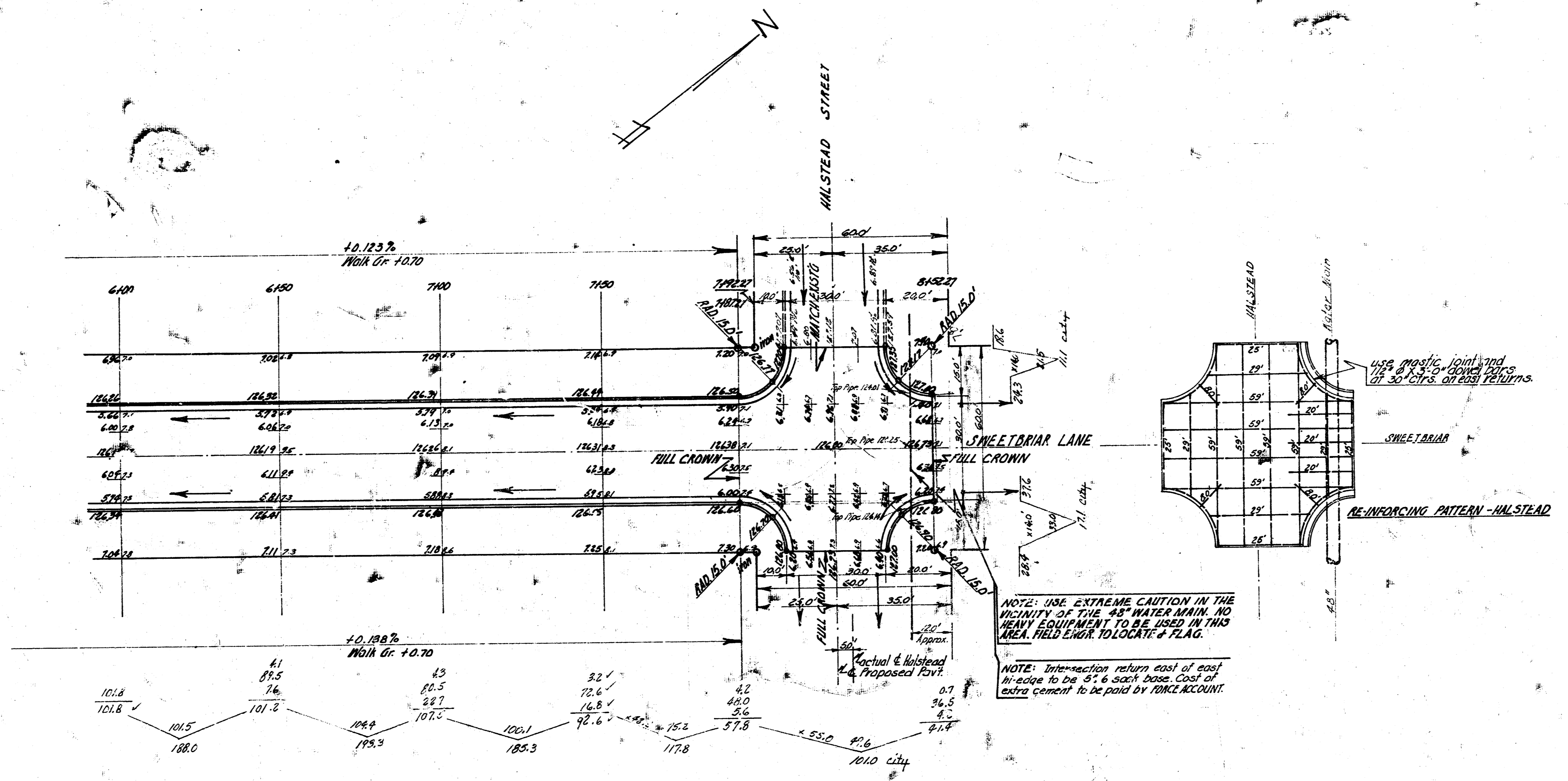
DEFLECTION PER FOOT OF CURVE = 4.6670'

EXCAVATION TO 1.0' ±  
 PROP. 3380.2  
 4.07% 338.0

SWEETBRIAR LANE  
 N.W. TWENTY-FIRST STR. TO N.W. HALSTEAD STR.  
 26'-2'-30" ASPHALTIC CONCRETE  
 City of Wichita, Kansas  
 B.E. SMITH CITY ENGINEER  
 DATE: MAR. 1959 PROJ. NO. C18-59



SHEET 1-2



NOTE: USE EXTREME CAUTION IN THE VICINITY OF THE 48" WATER MAIN. NO HEAVY EQUIPMENT TO BE USED IN THIS AREA. FIELD ENGR. TO LOCATE & FLAG.

NOTE: Intersection return east of east sidewalk to be 5' & shall base cost of extra cement to be paid by OWNER/ACCOUNT.

**SWEETBRIAR LANE**  
 N. TWENTY-FIRST STR. N. HALSTEAD STR.  
 PROJECT NO. C18-39  
 SHEET 2-2