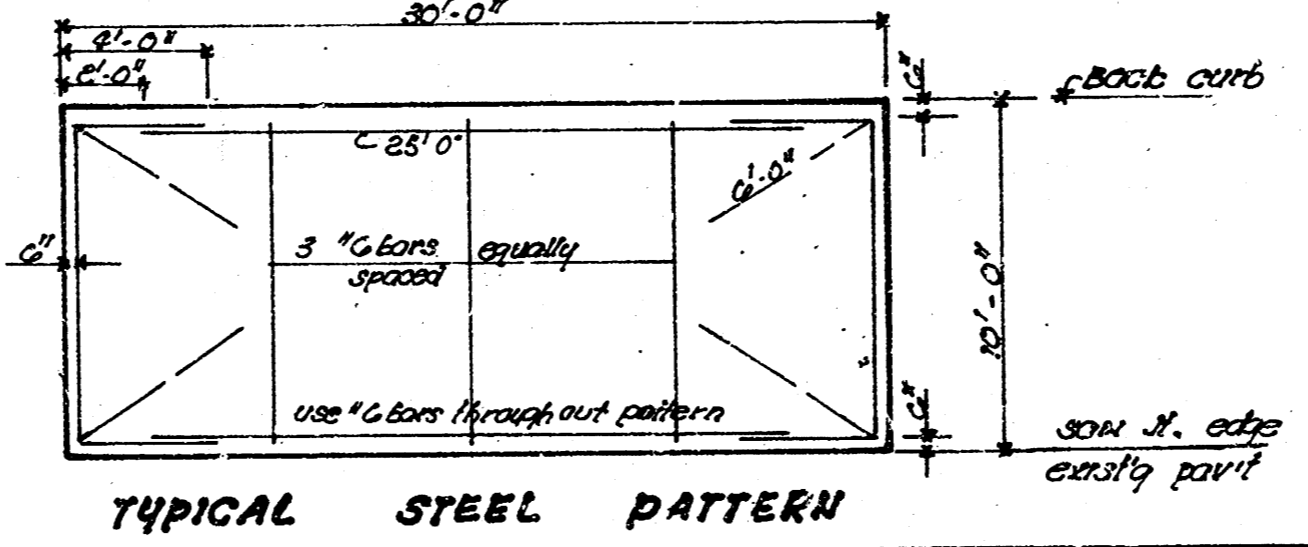
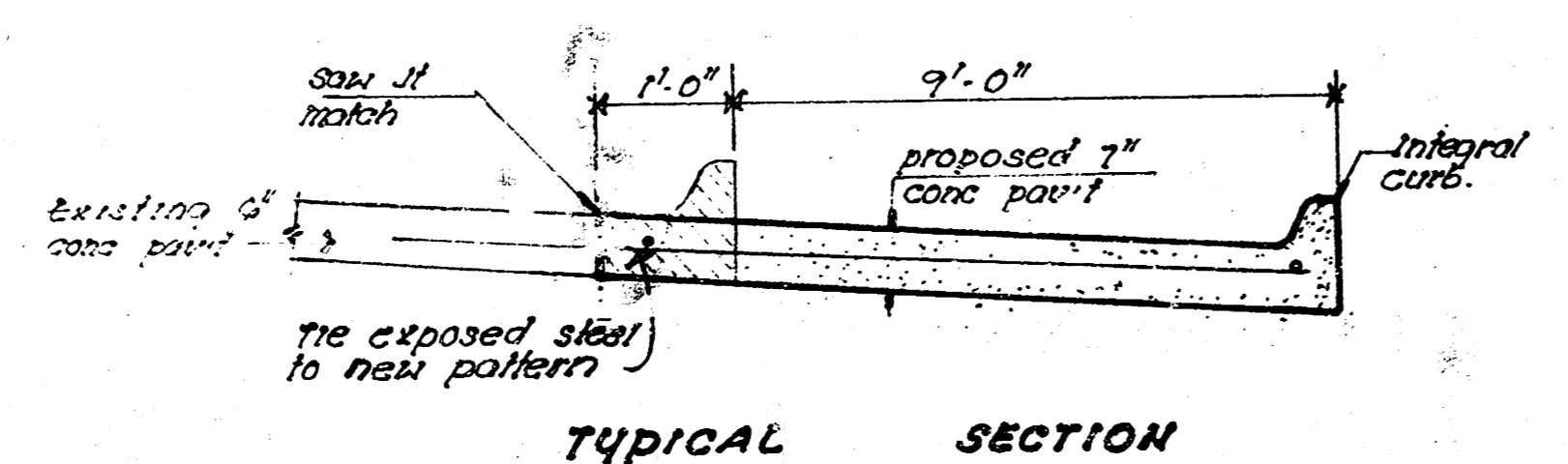
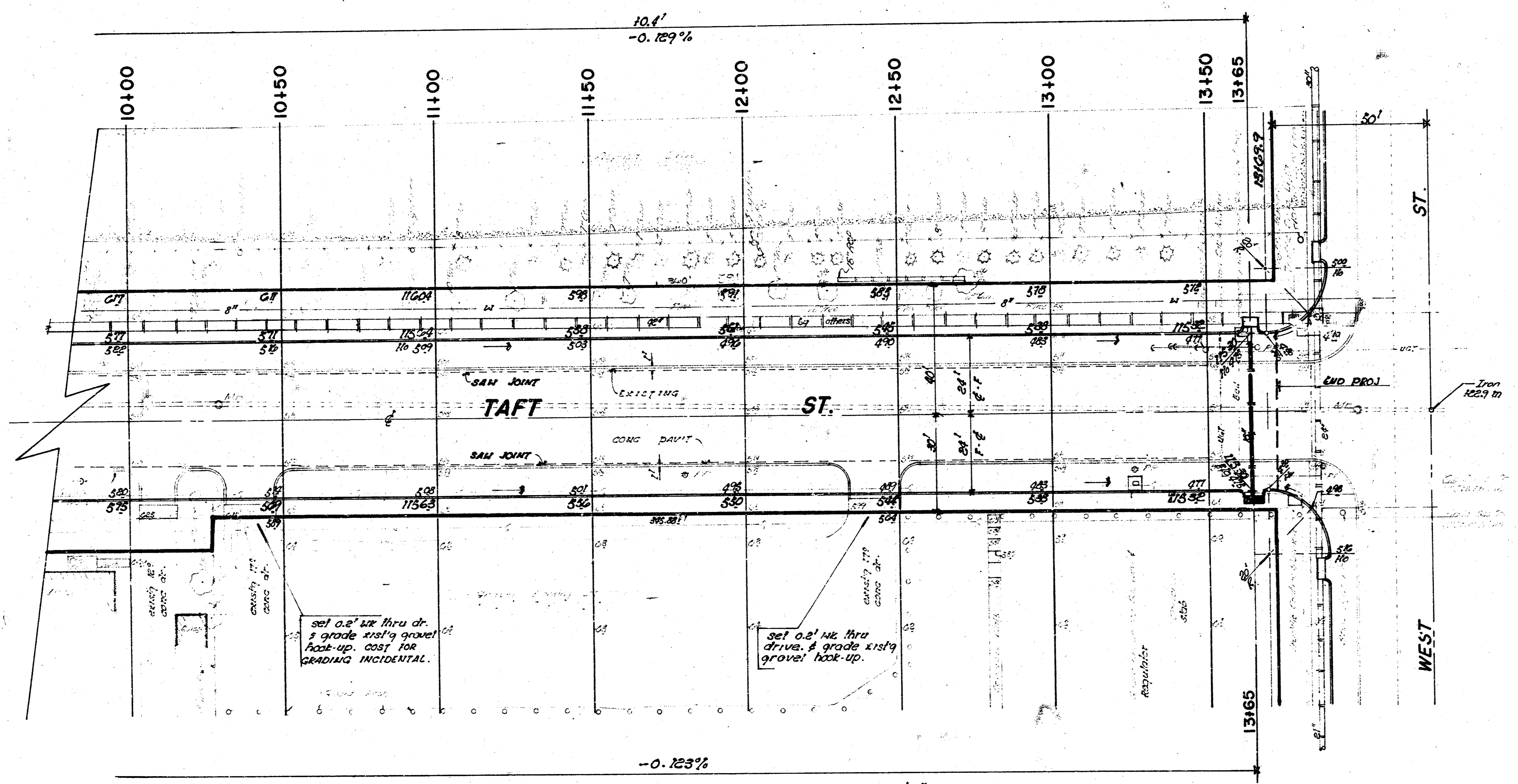


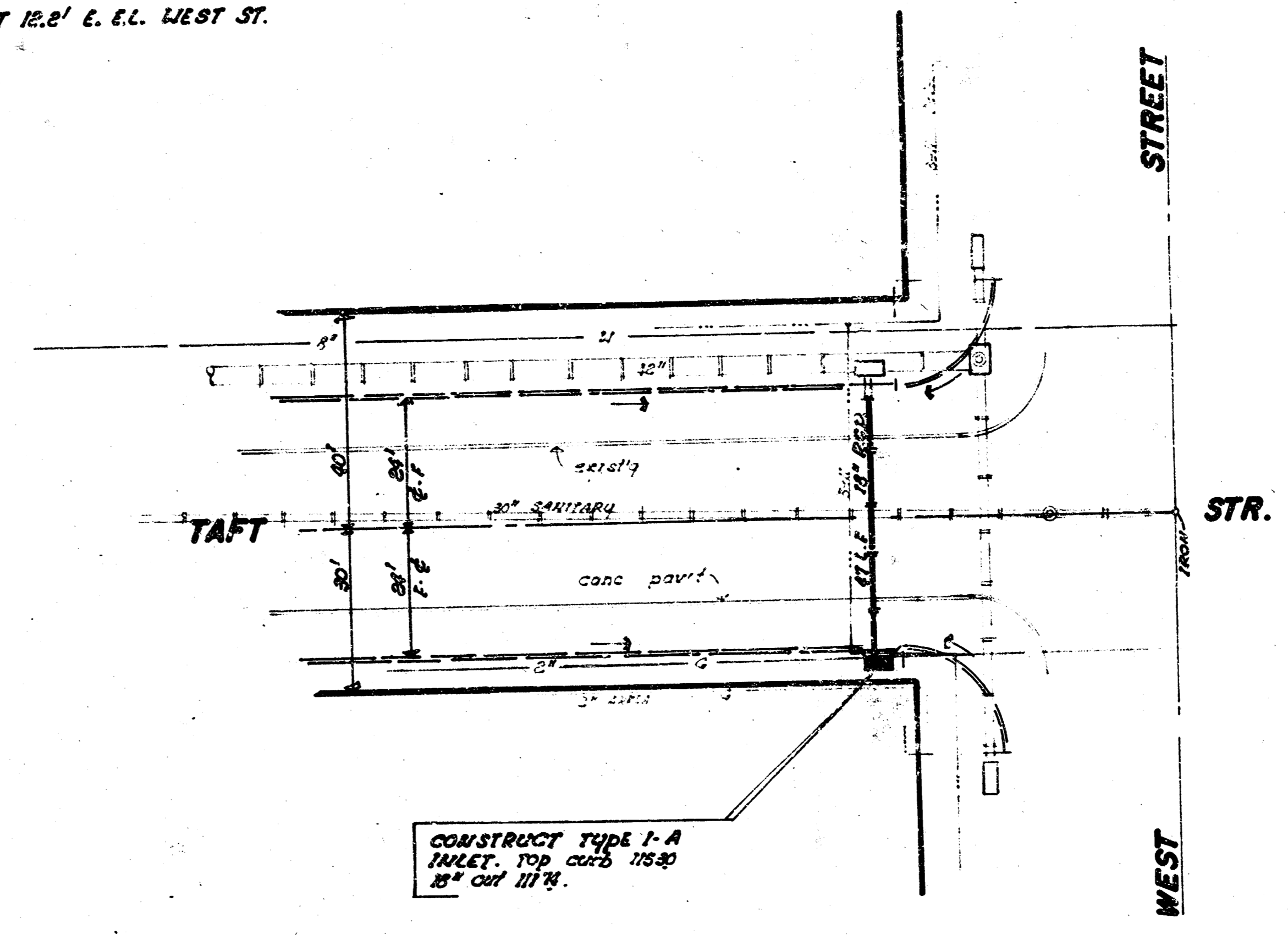
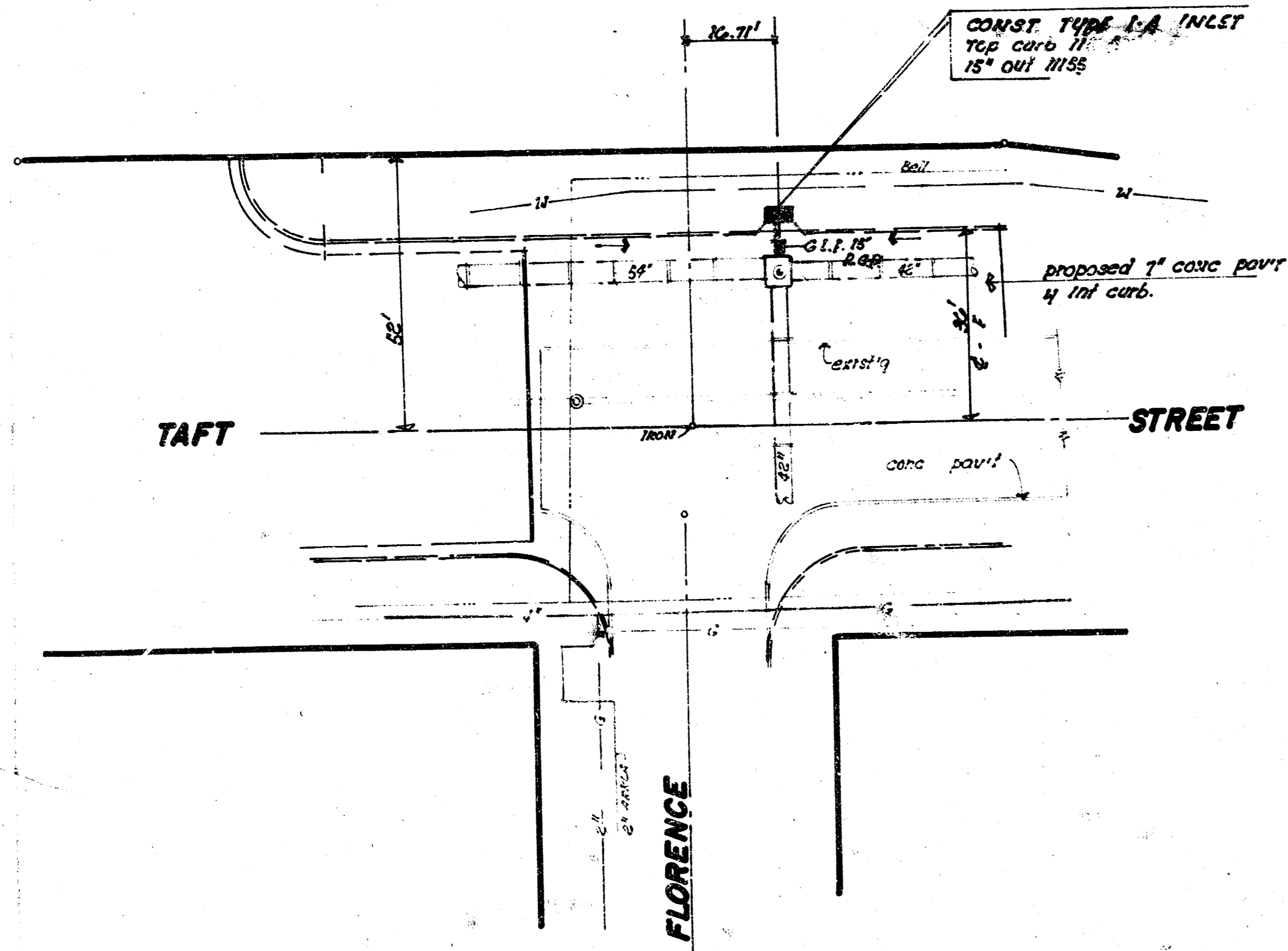
B.M. 120.12 10' to on 2.5' Diameter concrete base to light tower 53' East of E. of Tracy and 90.5' South of E. of 7811.
 S. M. 11589 17' St. face 4' wide E. & W. So. Side TAFT 12.2' E. E.L. WEST ST.

Scale: 1" = 20'

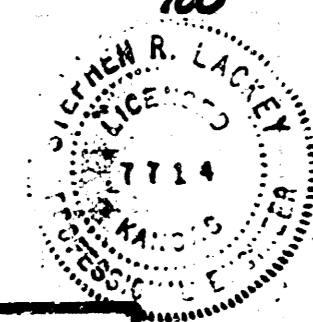
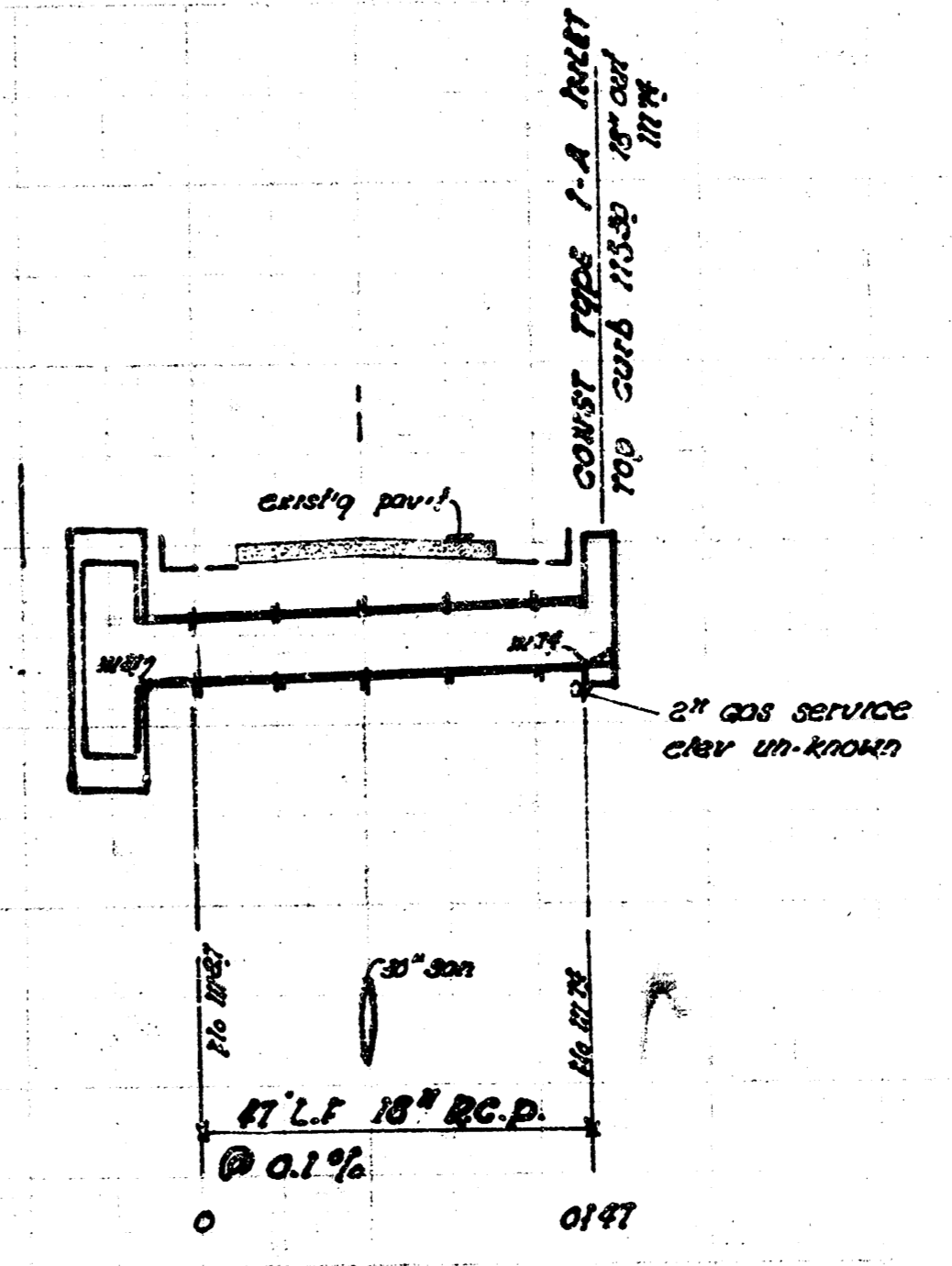
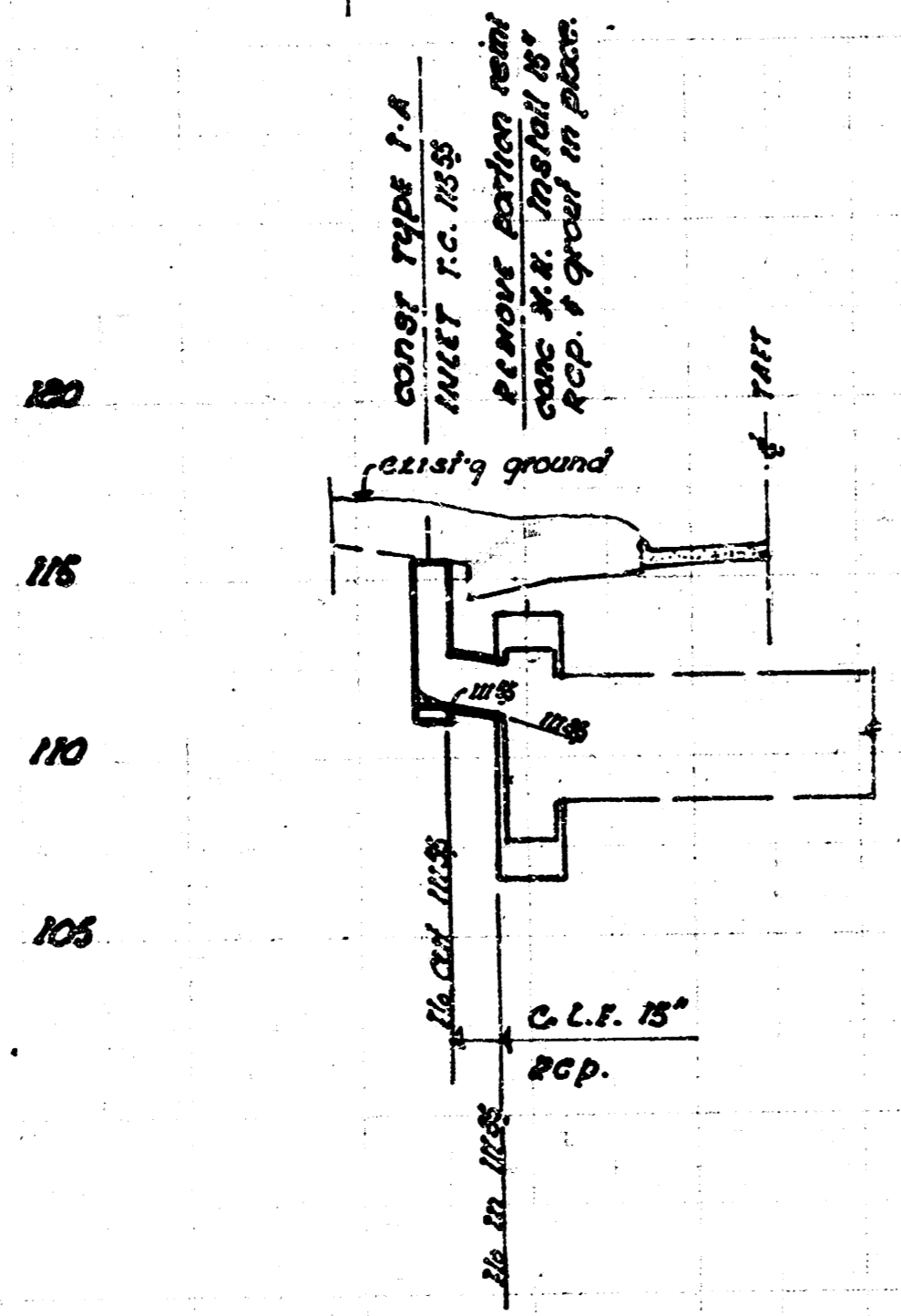


7/2

B.M. 120.12 11" Top 2.5' DIA concrete base to right tower 53' E. of TRACY
 30.5 S. of TAFT.
 B.M. 115.89 17" S. face of walk E of W. S. side TAFT 12.8' E. E.L. WEST ST.



PLAN SCALE 1" = 20'
 PROFILE 1" = 20' VERT
 1" = 5' VERT



DRAINAGE in connection with paving
TAFT STREET W.L. FLORENCE
 To W.L. WEST STREET.
CITY OF WICHITA, KANSAS
 DEAN SELLERS Acting City Engineer
 Date:
 Proj No. 472-76-245-80632000-000-00

FILMED FROM THE BEST
 AVAILABLE COPY