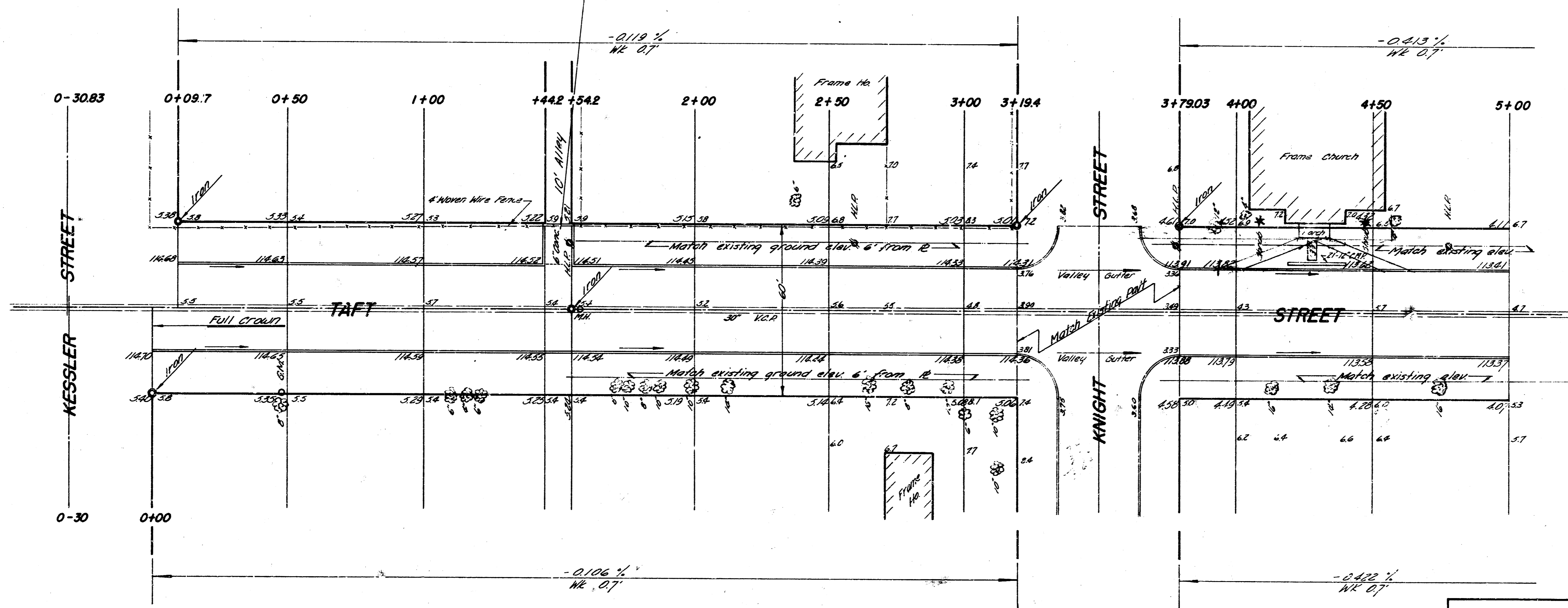


B.M. 11632 Step bench S.S. H.P. N.S. Taft midway betw. Knight & Kessler.

Note to field engineer:
Do not leave curb opening & pave alley return unless the alley is currently in use!

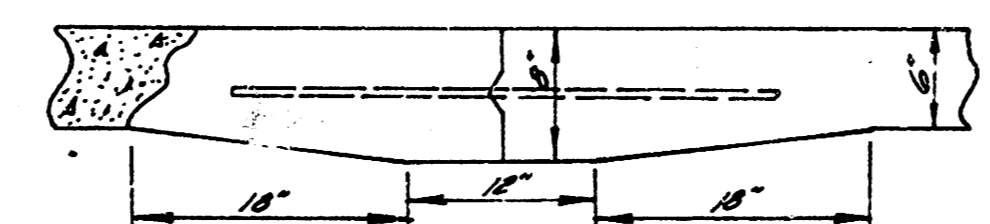
Note:
Do not excavate at R to meet walk grade bet sta. 1+54.2 & sta. 3+00. Grade partings to match existing ground elevation 6' from R.



Sewer Line



Note:
All entrance pipes to be removed & disposed of in accordance with instructions of the city dirt checker.



Use 4 Bars, 3' long on 2'-6" Centers
DETAIL OF MASTIC JOINT

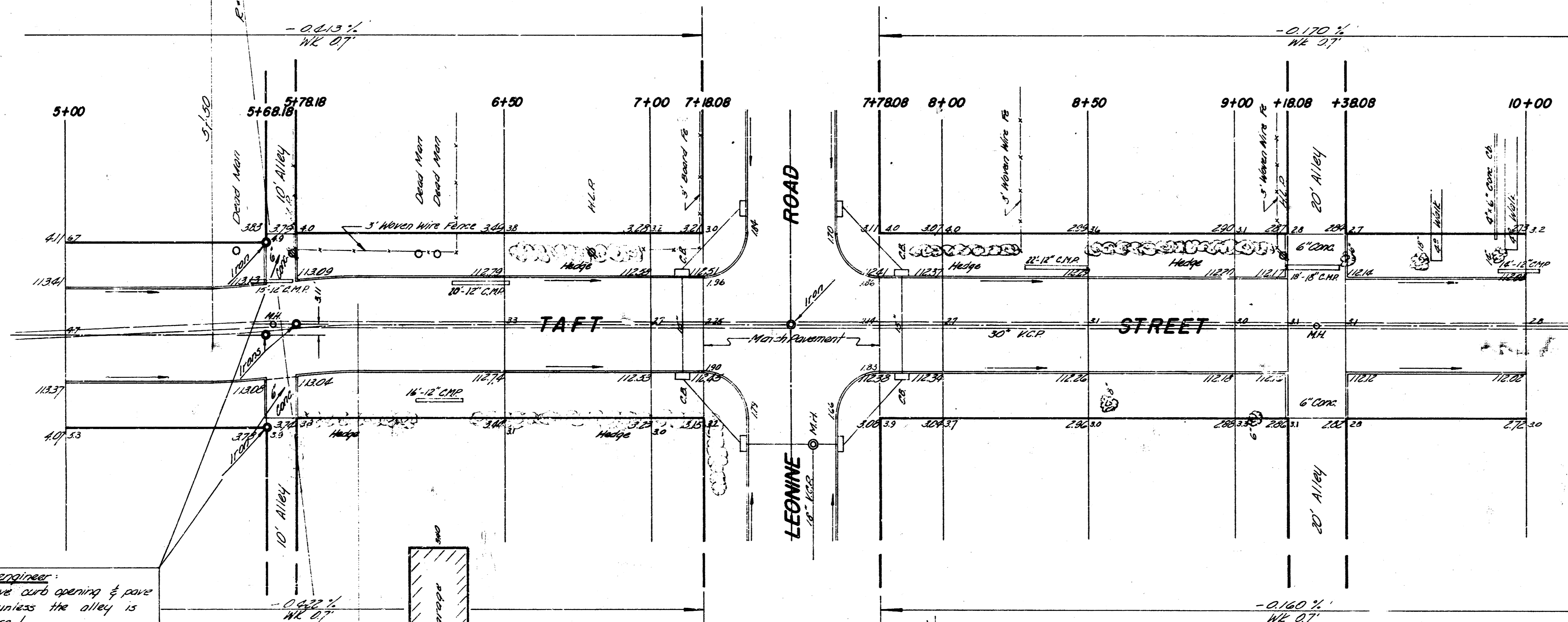
Excavation	Prop	City
22680	320	
22689	312	
24948	363.2	



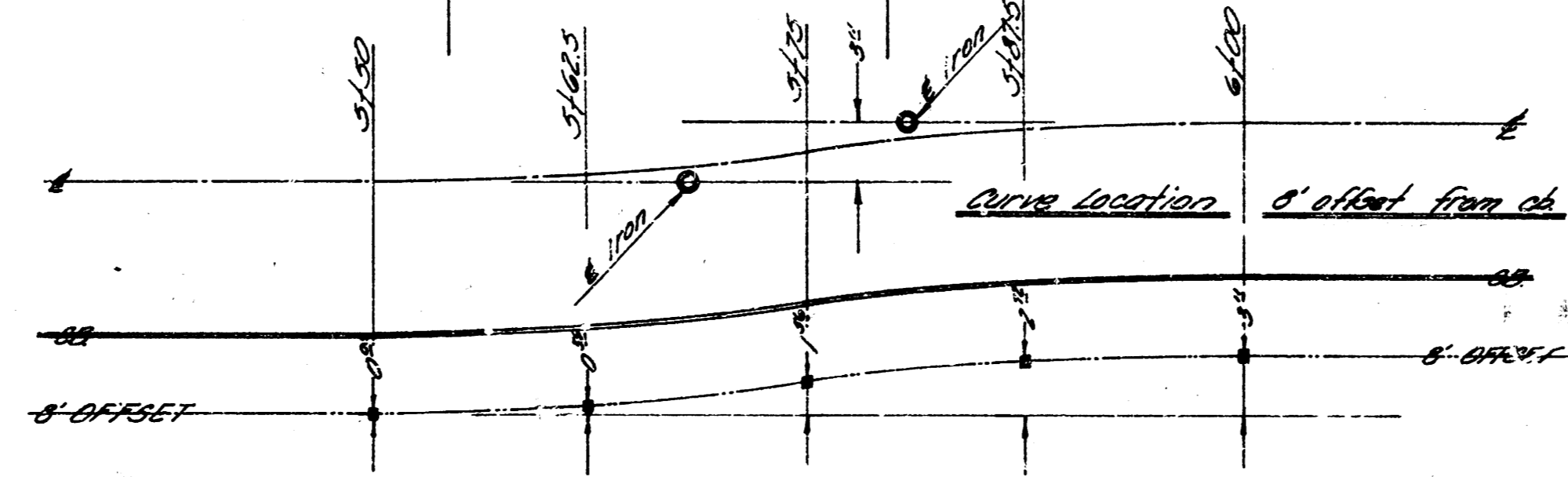
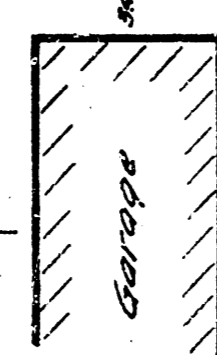
Sheet 1 of 7

TAFT
E.L. KESSLER-WL. SHERIDAN
30' CONC. & CB.
CITY OF WICHITA, KANSAS
B.E. SMITH CITY ENGINEER
DATE: APR. 11th 1920 PROJ. C19-249

BM 114.91 Step bench S.S. H.L.P. N.S. TAFT midway betw Leanine & Knight.
 BM 113.36 Step bench S.S. H.L.P. N.S. TAFT midway betw All Hollows & Leanine.



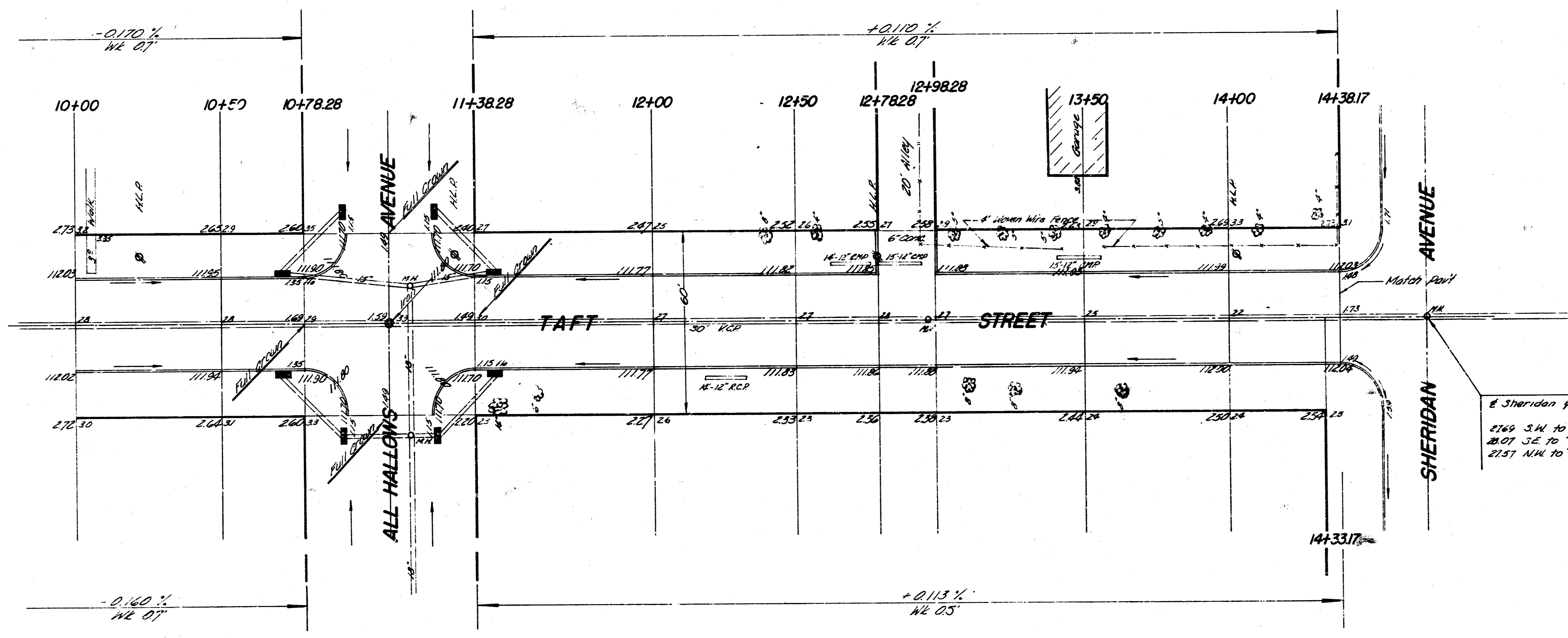
Notes to field engineer:
 Do not leave curb opening & pave
 alley return unless the alley is
 currently in use!



TAFT
 019-249

Sheet 2 of 7

B.M. 112.135 4" cut top cb radius, S.W. Sheridan & Taft.



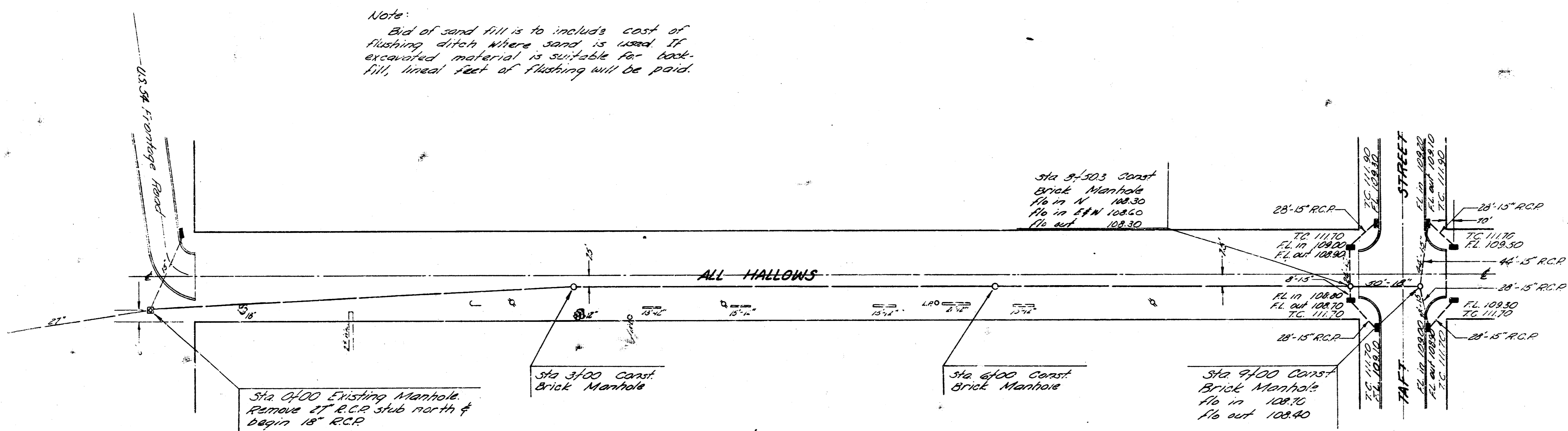
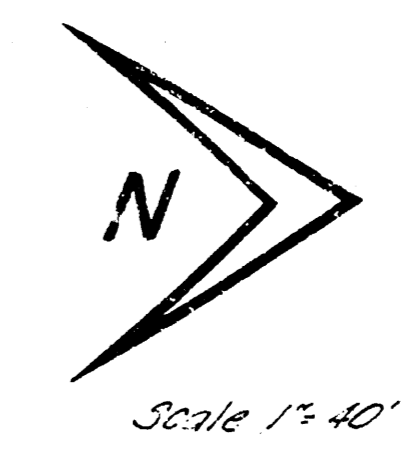
4 Sheridan & Taft Nail in M.H. cover
 7283
 2169 S.W. to 4" cut top curb radius
 2807 S.E. to 4" cut top curb radius
 2157 N.W. to 4" cut top curb radius

Note to Field Engineer:
 Take this to all prop. trans prior to exca & replace &
 thimble same during the paving operation.

TAFT
 C19-249

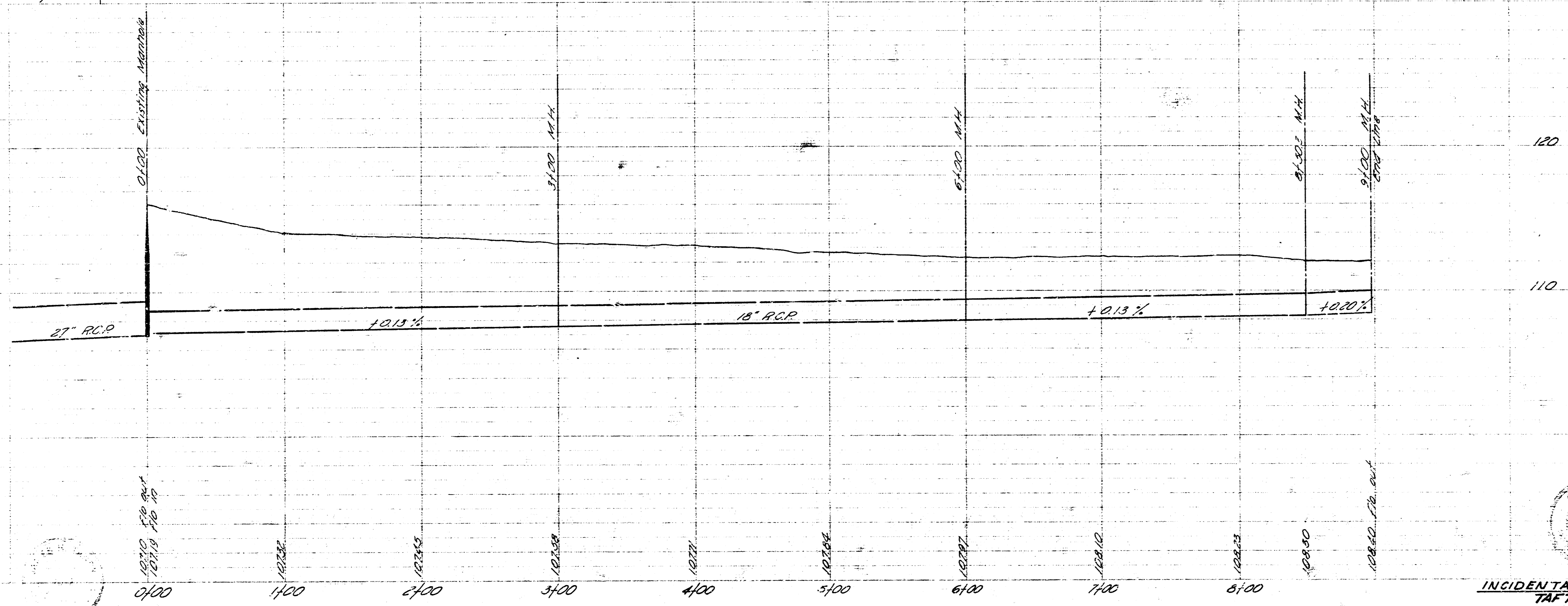
Sheet 3 of 7

Note:
 Bid of sand fill is to include cost of
 flashing ditch where sand is used. If
 excavated material is suitable for back-
 fill, lined feet of flashing will be paid.



B.M. 11483 "M" in Marker P.H.
 NE Cor. Leaning of University

B.M. 11599 "X" on N. of Highway
 U.S. 54 & Sheridan North



INCIDENTAL DRAINAGE
 TAFT STREET
 E.L. Kessler - M.E. Sheridan
 APRIL 1960 Proj. No. 19-249