

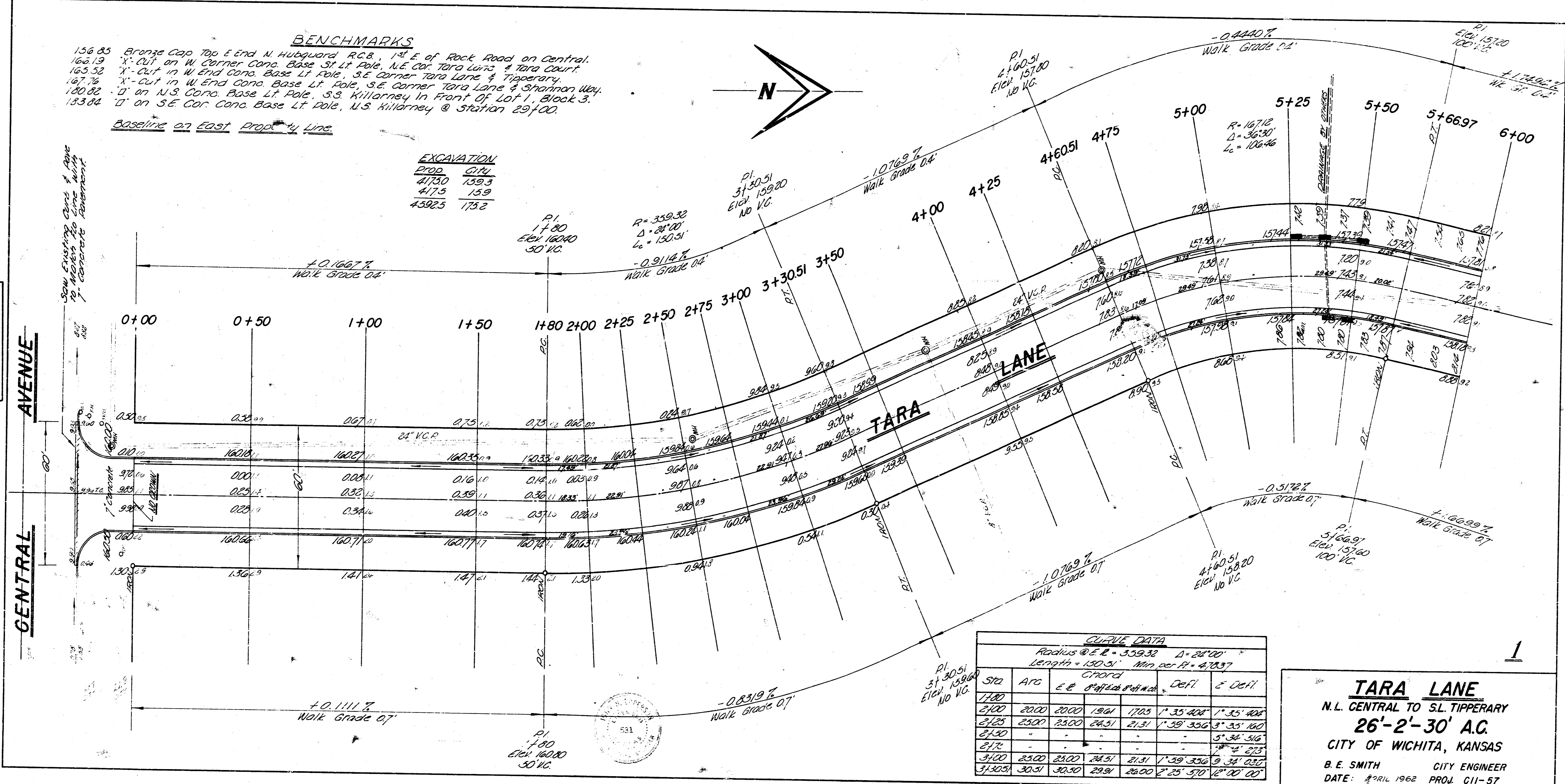
**BENCHMARKS**  
 156.85 Bronze Cap Top E End N. Hubguard A.C.B., 1<sup>st</sup> E of Rock Road on Central.  
 166.19 "X" cut in W. Corner Conc. Base Lt. Pole, N.E. Cor. Tara Lane & Tara Court.  
 165.52 "X" cut in W. End Conc. Base Lt. Pole, S.E. Corner Tara Lane & Tipperary.  
 167.76 "X" cut in W. End Conc. Base Lt. Pole, S.E. Corner Tara Lane & Shannon Way.  
 180.82 "D" on N.S. Conc. Base Lt. Pole, S.S. Killarney In Front Of Lot 1, Block 3.  
 133.84 "D" on S.E. Cor. Conc. Base Lt. Pole, U.S. Killarney @ Station 29+00.

Baseline on East Property Line

**EXCAVATION**

PROP.	CITY
4175.0	159.3
4175.0	159.0
4392.5	175.2

SHOW EXISTING CURB & POLE TO MATCH TO LINE WITH CONCRETE ADJUSTMENT



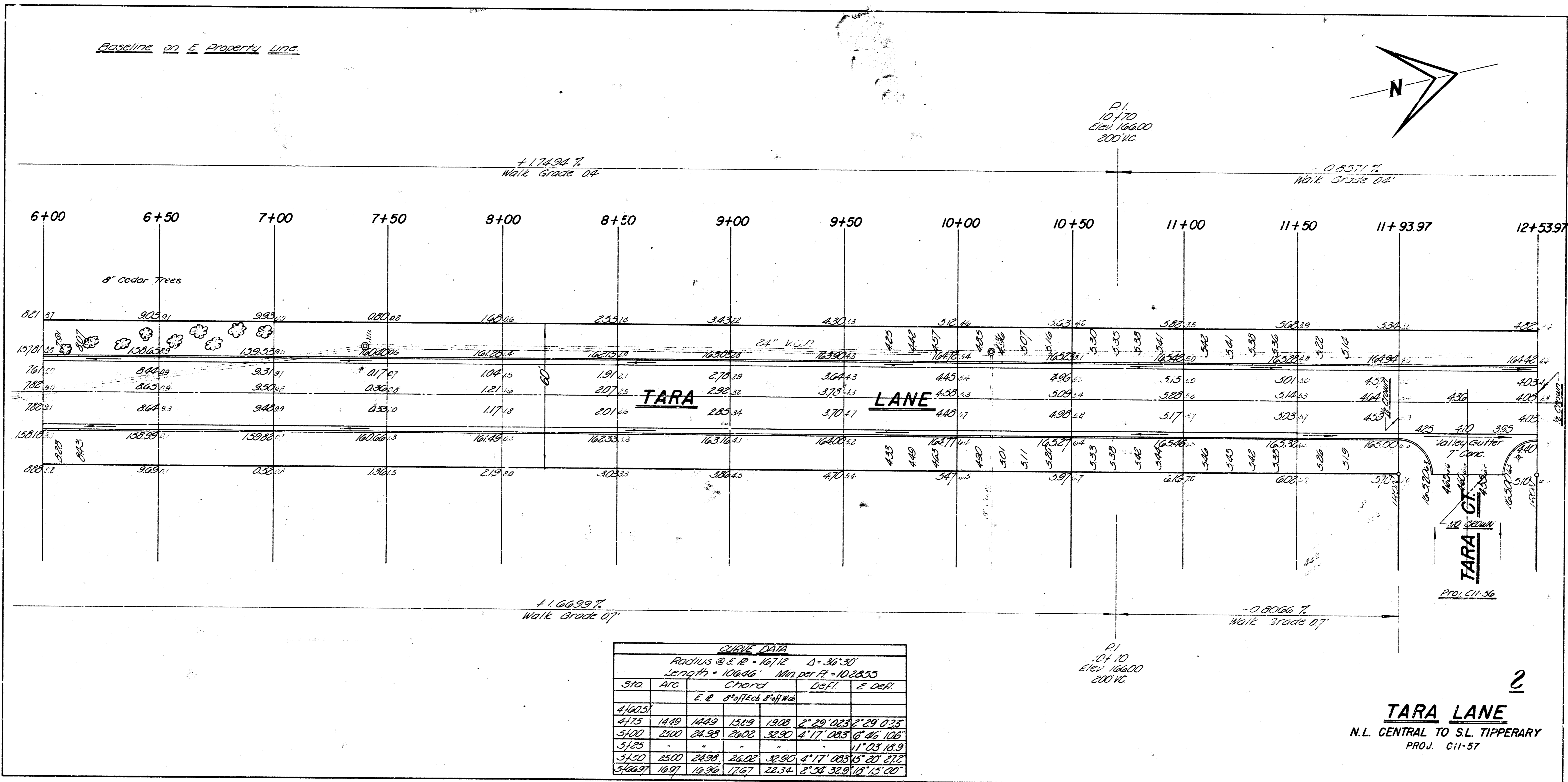
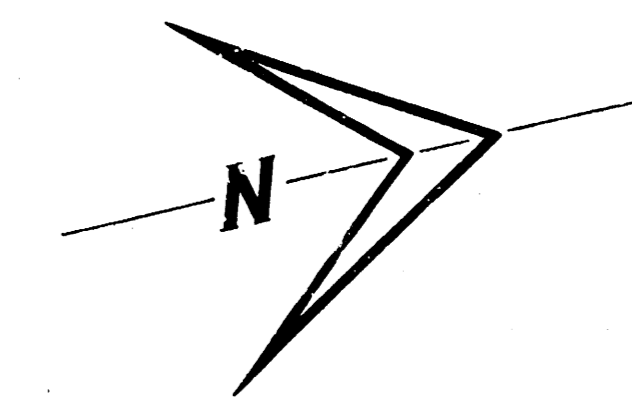
**CURVE DATA**

Radius @ E.E. = 339.32' D = 28°00'  
 Length = 150.51' Min. per ft = 4.7837

Sta	Arc	Chord	E.E. Offset	Defl.	± Defl.
3+00	20.00	19.61	1.705	1° 35' 42"	1° 35' 42"
3+25	25.00	24.51	2.151	1° 59' 35.6"	3° 35' 18.0"
3+50	-	-	-	-	5° 34' 51.6"
3+75	-	-	-	-	7° 4' 23.5"
4+00	25.00	24.51	2.151	1° 59' 35.6"	9° 34' 23.7"
4+25	20.00	19.61	1.705	1° 35' 42"	11° 20' 00"

**TARA LANE**  
 N.L. CENTRAL TO S.L. TIPPERARY  
 26'-2'-30' A.C.  
 CITY OF WICHITA, KANSAS  
 B. E. SMITH CITY ENGINEER  
 DATE: APRIL 1962 PROJ. C11-57

Baseline 27 E Property Line



**CURVE DATA**

Radius @ E.P. = 16712 Δ = 36°30'

Length = 10646' Min. per ft = 102855

Sta	ARC	E.P.	Offset	Dist	E. Off.
4+625					
4+725	1440	1449	1519	1808	2°29'02.5" 2°29'02.5"
4+820	2500	2498	2502	3290	4°17'08.5" 6°46'10.6"
5+125					11°03'18.9"
5+150	2500	2499	2502	3290	4°17'08.5" 6°46'10.6"
5+669	1697	1696	1767	2234	2°58'32.9" 10°12'00"

**TARA LANE**  
N.L. CENTRAL TO S.L. TIPPERARY  
PROJ. C11-57



