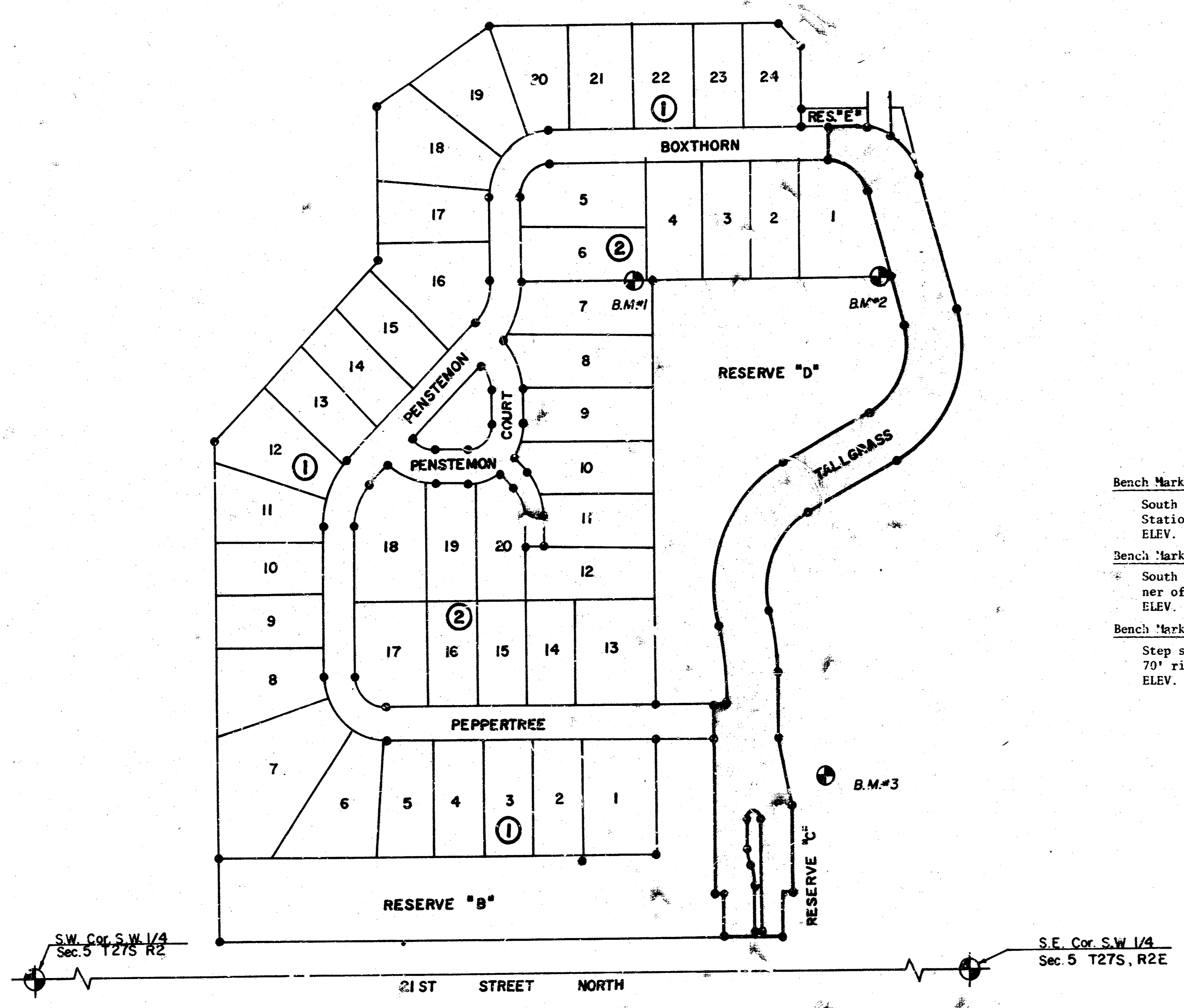


TALLGRASS PAVING

PROJECT NO.

472-76-245-81123-000-000-001

CITY OF WICHITA, KANSAS
R.W. BRUGGEMAN, CITY ENGINEER



Bench Mark #1:
South rim of manhole, approx. 126' right of Station 1 + 57.26 on Boxthorn
ELEV. = 194.11'

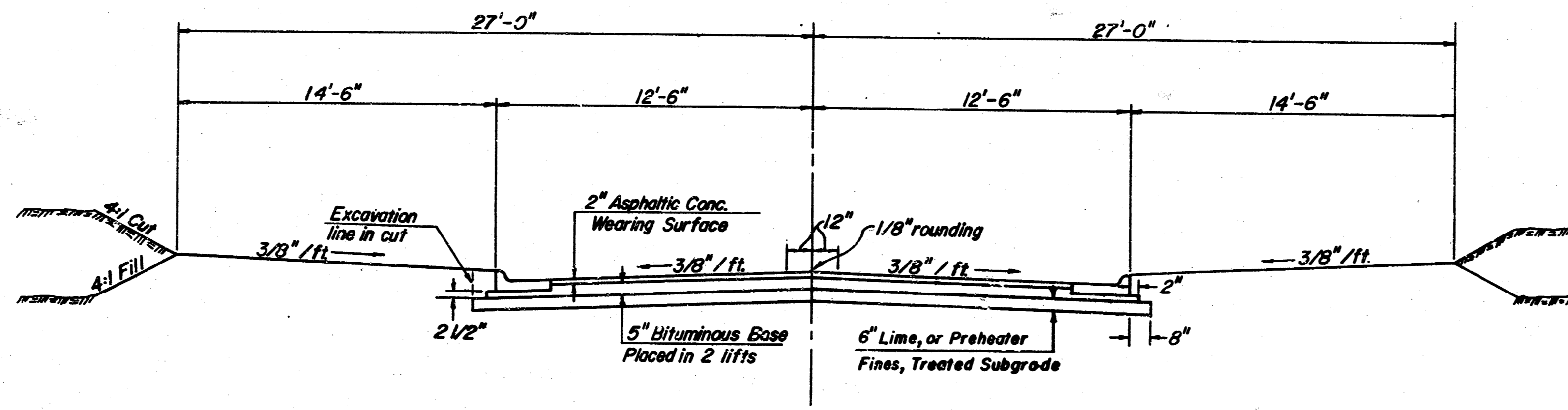
Bench Mark #2:
South rim of manhole at the southeast corner of Lot 1, Block 2, Woodlands East
ELEV. = 192.16'

Bench Mark #3:
Step spike in the southwest face of 18" tree 70' right of STA. 2 + 00 Tallgrass
ELEV. = 195.90'

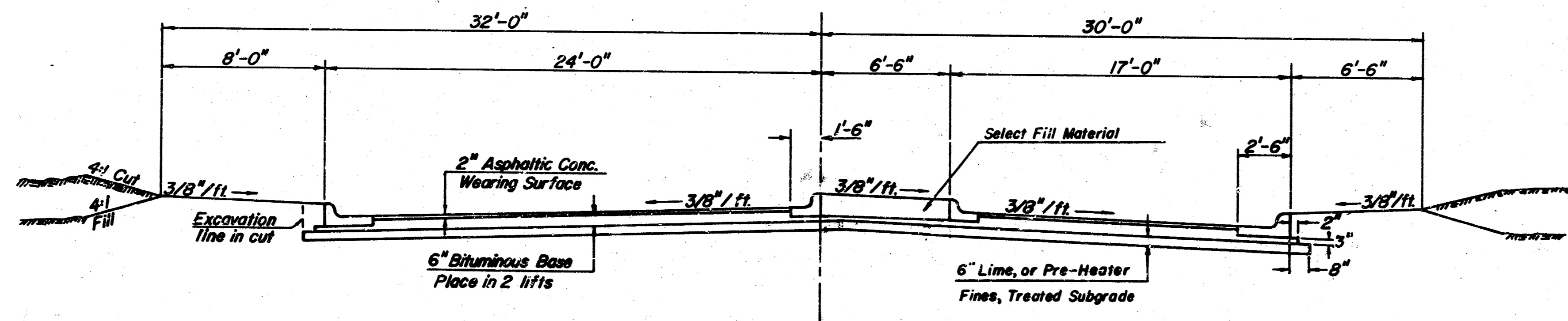
INDEX TO SHEETS

PAGE NO.	SHEET DESCRIPTION
1	COVER SHEET
2	DETAIL SHEET
3-4	TALLGRASS
5	TALLGRASS CLUBHOUSE PLAT
6	WOODLANDS PLAT
7-8	CROSS SECTIONS

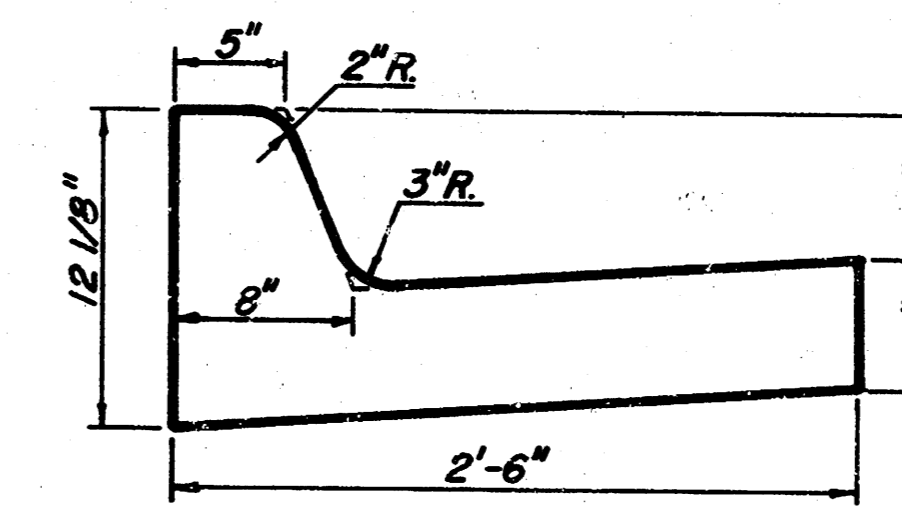
FILMED FROM THE BEST
 AVAILABLE COPY



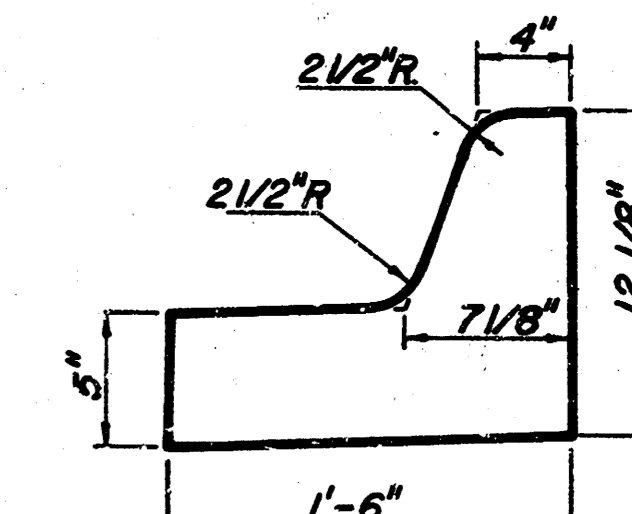
Typical 25'-0" Section



Typical 47'-6" Median Section




Std Curb & Gutter

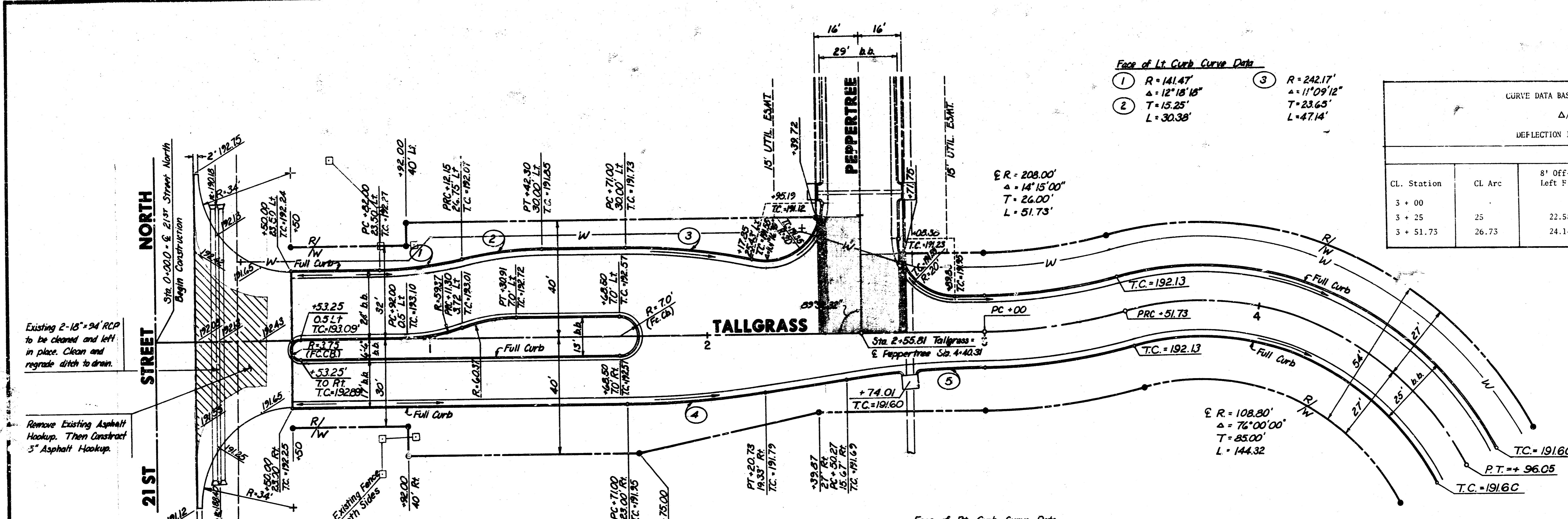


Median Curb & Gutter

1. A Tack Coat of Emulsified Asphalt (SS-1H or CSS-1H) shall be applied at an approximate rate of 0.05 gallons per square yard between lifts of asphaltic materials when ordered by the Engineer. Tack Coat will not be paid for directly and shall be considered as subsidiary to price for Asphaltic Pavement.
2. Bituminous Base and Asphaltic Concrete Wearing Surface shall be placed with a laydown machine having automatic controls for crown and grade. Construction Joints in each lift shall be staggered a minimum distance of 1 foot with joints in preceding lifts and such that a joint will be constructed on the pavement centerline in the top lift.
3. The A.C. Pavement between combined curb and gutter shall be paid as square yards 8" A.C. Pavement (6" Bituminous Base) from sta 0 + 00 to 3 + 00, 7" A.C. Pavement (5" Bituminous Base) from sta 3 + 00 to 9 + 72.10. The Bituminous Base under the combined curb and gutter shall be paid as square yards, 3" Bituminous Base from sta 0 + 00 to 3 + 00 and 2 1/2" Bituminous Base from sta 3 + 00 to 9 + 72.10.
4. Contraction Joints may be constructed in Integral Curb by sawing with an approved concrete saw. The saw shall extend through the curb to the pavement. Sawed Contraction Joints shall have a maximum spacing of 15'.
5. No driveways are to be constructed as part of this contract without authorization from Construction Engineer, Wichita, Kansas.
6. The Contractor shall be responsible for preserving property irons. The Contractor shall be required to re-establish any property irons which are damaged or destroyed by his construction operations. Such irons shall be re-established by a licensed Land Surveyor or a licensed Professional Engineer in accordance with State laws.
7. Cleaning the 94 L.F. of 2 - 18" RCP and regrading the ditch shall be considered incidental to the project.

Tallgrass Street		Design KHB
Typical Sections		Drawn by DL
		Checked by MDH
		Date Jan., 1962
		Job no. 81-204
 Van Doren Hazard Stallings Architects - Engineers - Planners Topeka - Wichita - Minneapolis - Kansas City	Sheet 2	
	of 8	

FILMED FROM THE BEST AVAILABLE COPY



Face of Lt. Curb Curve Data

1	R = 141.47'	3	R = 242.17'
2	Δ = 12° 18' 18"		Δ = 11° 09' 12"
	T = 15.25'		T = 23.65'
	L = 30.38'		L = 47.14'

CURVE DATA BASED ON 208.00' R. L = 51.73

Δ/2 = 7° 07' 20"

DEFLECTION IN MIN./FT. = 8.2610634

Chord Length				
CL. Station	CL. Arc	8' Off-set Left F.C.	8' Off-set Right F.C.	Total Deflection
3 + 00	25	22.58	27.39	3° 26' 36"
3 + 25	26.73	24.14	29.28	3° 40' 54"
3 + 51.73				7° 07' 30"

Face of Rt. Curb Curve Data

4	R = 338.75'
5	Δ = 5° 26' 30"
	T = 25.0'
	L = 49.91'

CURVE DATA BASED ON R = 108.80' L = 144.32'

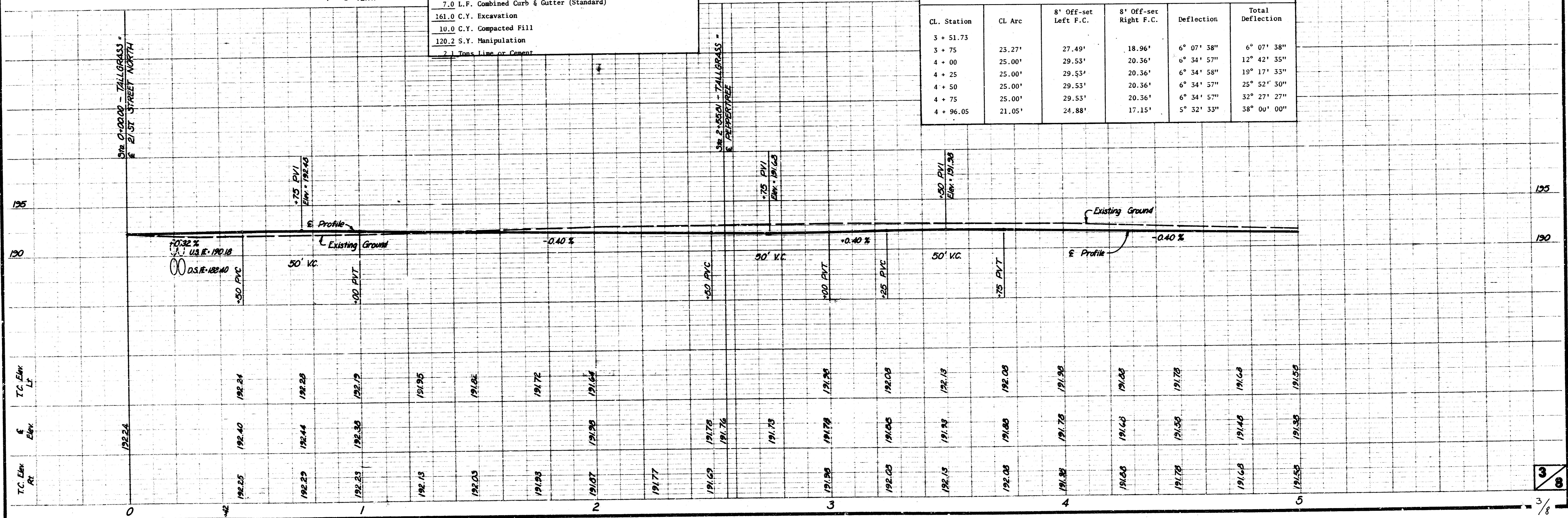
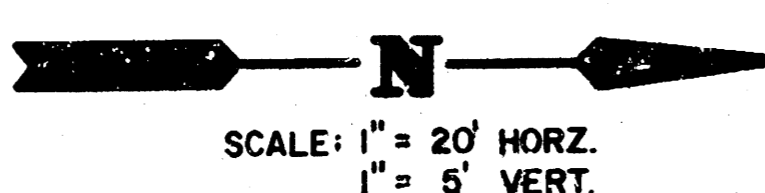
Δ/2 = 38° 00' 00"

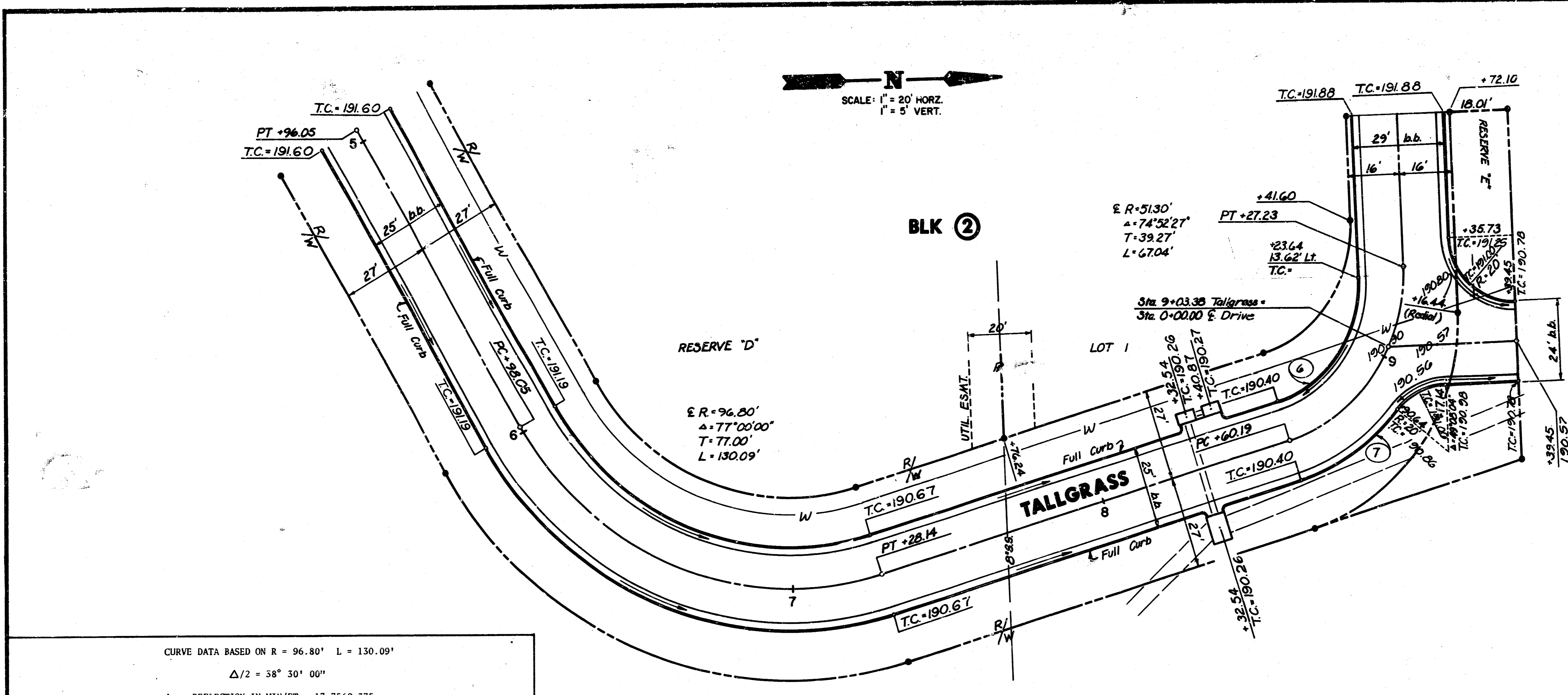
DEFLECTION IN MIN./FT. = 15.7982262

Chord Length				
CL. Station	CL. Arc	8' Off-set Left F.C.	8' Off-set Right F.C.	Total Deflection
3 + 51.73				
3 + 75	23.27'	27.49'	18.96'	6° 07' 38"
4 + 00	25.00'	29.53'	20.36'	12° 42' 35"
4 + 25	25.00'	29.53'	20.36'	6° 34' 58"
4 + 50	25.00'	29.53'	20.36'	19° 17' 33"
4 + 75	25.00'	29.53'	20.36'	25° 52' 30"
4 + 96.05	21.05'	24.88'	17.15'	32° 27' 27"
				38° 00' 00"

PEPPERTREE INTERSECTION QUANTITIES

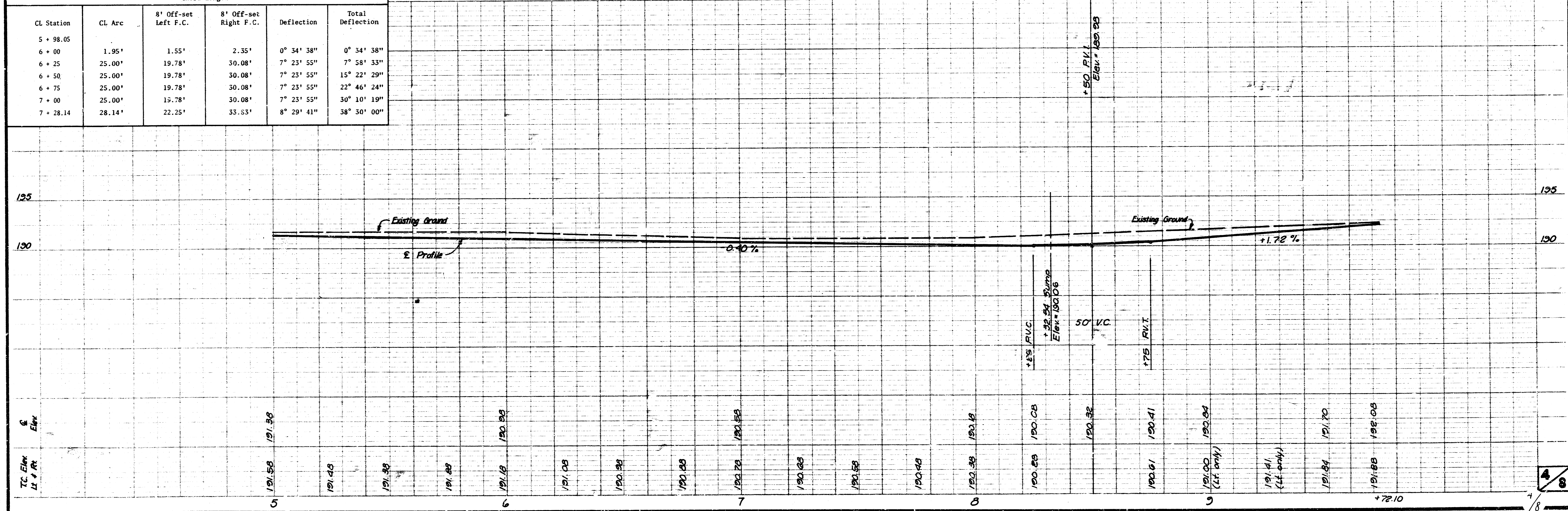
- 116.0 S.Y. 8" Asphaltic Conc. Pavement (6" Bituminous Base)
- 3.6 S.Y. 3" Bituminous Base
- 7.0 L.F. Combined Curb & Gutter (Standard)
- 161.0 C.Y. Excavation
- 10.0 C.Y. Compacted Fill
- 120.2 S.Y. Manipulation
- 2 Tons Lime or Cement





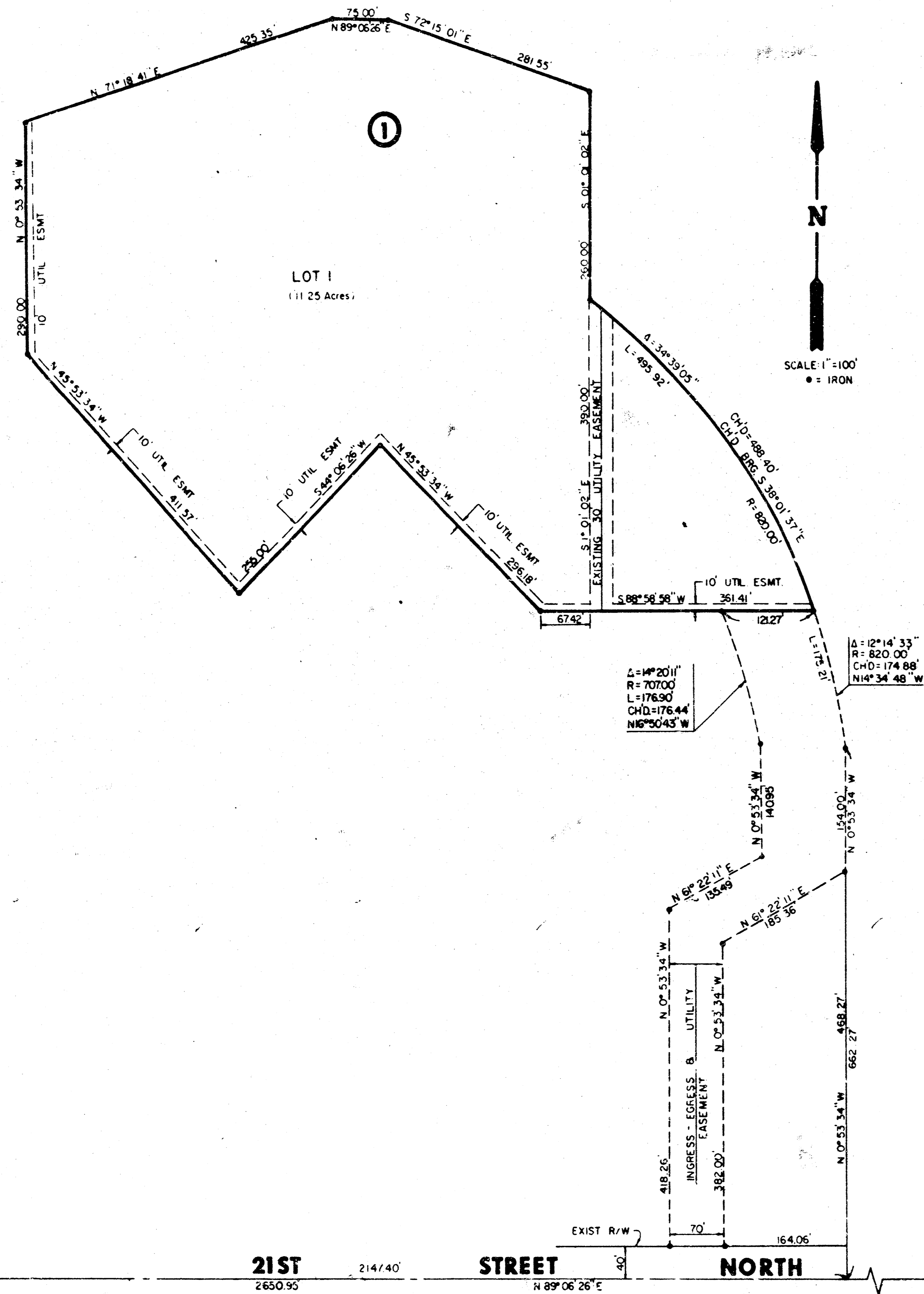
CURVE DATA BASED ON R = 96.80' L = 130.09'
 $\Delta/2 = 38^{\circ}30'00''$
 DEFLECTION IN MIN/FT = 17.7569.375

Chord Length					
CL Station	CL Arc	8' Off-set Left F.C.	8' Off-set Right F.C.	Deflection	Total Deflection
5 + 98.05					
6 + 00	1.95'	1.55'	2.35'	0° 34' 38"	0° 34' 38"
6 + 25	25.00'	19.78'	30.08'	7° 23' 55"	7° 38' 33"
6 + 50	25.00'	19.78'	30.08'	7° 23' 55"	15° 22' 29"
6 + 75	25.00'	19.78'	30.08'	7° 23' 55"	22° 46' 24"
7 + 00	25.00'	19.78'	30.08'	7° 23' 55"	30° 10' 19"
7 + 28.14	28.14'	22.25'	33.53'	8° 29' 41"	38° 30' 00"



vhs 81

**FINAL PLAT OF
TALLGRASS CLUBHOUSE**
AN ADDITION TO WICHITA, SEDGWICK COUNTY, KANSAS



I, Kenneth H. Bengtson, a Civil Engineer in Kansas, do hereby certify that I have been in responsible charge of surveying and platting of "Tallgrass Clubhouse", an addition to Wichita, Sedgewick County, Kansas, into a lot and a block, the same being accurately set forth in the accompanying plat and described as follows:

A tract in the southwest quarter of Section 5, Township 27 South, Range 2 East of the 6th P.M., Sedgewick County, Kansas, commencing at the south-east corner of said Section 5 thence along the south line of said southwest quarter bearing N 89° 06' 26" E, 2147.40 feet; thence N 0° 51' 33" W, 602.27 feet to a point on a curve to the left; thence along said curve having a central angle of 11° 11' 33", a radius of 820.00 feet, a long chord of 174.58 feet in length bearing N 14° 14' 48" W, a distance of 174.21 feet to the point of beginning; thence S 88° 58' 58" W, 361.11 feet; thence N 45° 51' 34" W, 296.18 feet; thence S 00° 26' 26" W, 255.00 feet; thence N 45° 53' 34" W, 411.57 feet; thence N 0° 51' 33" W, 290.00 feet; thence N 71° 18' 41" E, 425.35 feet; thence N 84° 06' 26" E, 75.00 feet; thence N 72° 15' 01" E, 281.55 feet; thence S 1° 01' 02" E, 200.00 feet to a point on a curve to the right having a central angle of 34° 39' 05", a radius of 820.00 feet, a long chord of 488.30 feet bearing N 38° 01' 37" E, a distance of 495.92 feet to the point of beginning.

I hereby certify that the data in this plat are correct to the best of my knowledge and belief to the date of April, 1981.

Kenneth H. Bengtson
Kenneth H. Bengtson
124 W. 9th St., H-23-110-111
201 North Rock Road, Suite 151
Wichita, Kansas

Know all men by these presents that we the undersigned property owners of the land as above set forth in the Civil Engineer's Certificate have caused the same to be surveyed and platted into a lot and a block, the same to be known as "Tallgrass Clubhouse", an addition to Wichita, Sedgewick County, Kansas. Easements for the construction and maintenance of public utilities as indicated on the accompanying plat are hereby granted.

Tallgrass Company:
William J. Binter

STATE OF KANSAS
COUNTY OF SEDGWICK
Be it remembered that on this 22nd day of April, 1981, before me, a Notary Public in and for said State and County, came the Tallgrass Company by William J. Binter to me personally known to be the same person who executed the foregoing instrument of writing and duly acknowledged the execution of the same. In testimony whereof I have hereunto set my hand and affixed my notarial seal the day and year above written.

Katherine J. Bauman
Notary Public
My Appointment Expires July 2, 1983

This plat approved and all dedications shown hereon, if any, accepted by the Board of County Commissioners of Sedgewick County, Kansas, this 5th day of April, 1981.

James L. Bauman Mayor
Robert A. Binter County Clerk

This plat of "Tallgrass Clubhouse" has been submitted to and approved by the Wichita Sedgewick County Metropolitan Area Planning Commission on April 9th, 1981.

James L. Bauman Chairman
Robert A. Binter Secretary

This plat approved and all dedications shown hereon, if any, accepted by the Board of County Commissioners of Sedgewick County, Kansas, this 5th day of April, 1981.

Donald E. Gray Chairman
Robert A. Binter County Clerk
William J. Binter Commissioner
Tom Scott Commissioner

Joseph K. White County Clerk

Entered in transfer record this 22nd day of May, 1981.

Joseph K. White County Clerk

STATE OF KANSAS
COUNTY OF SEDGWICK
This is to certify that this instrument was filed for record in the Register of Deeds office at 11:30 AM O'clock on the 22nd day of MAY, 1981.

Bette F. McCart Register of Deeds
Pat Kettler Clerk

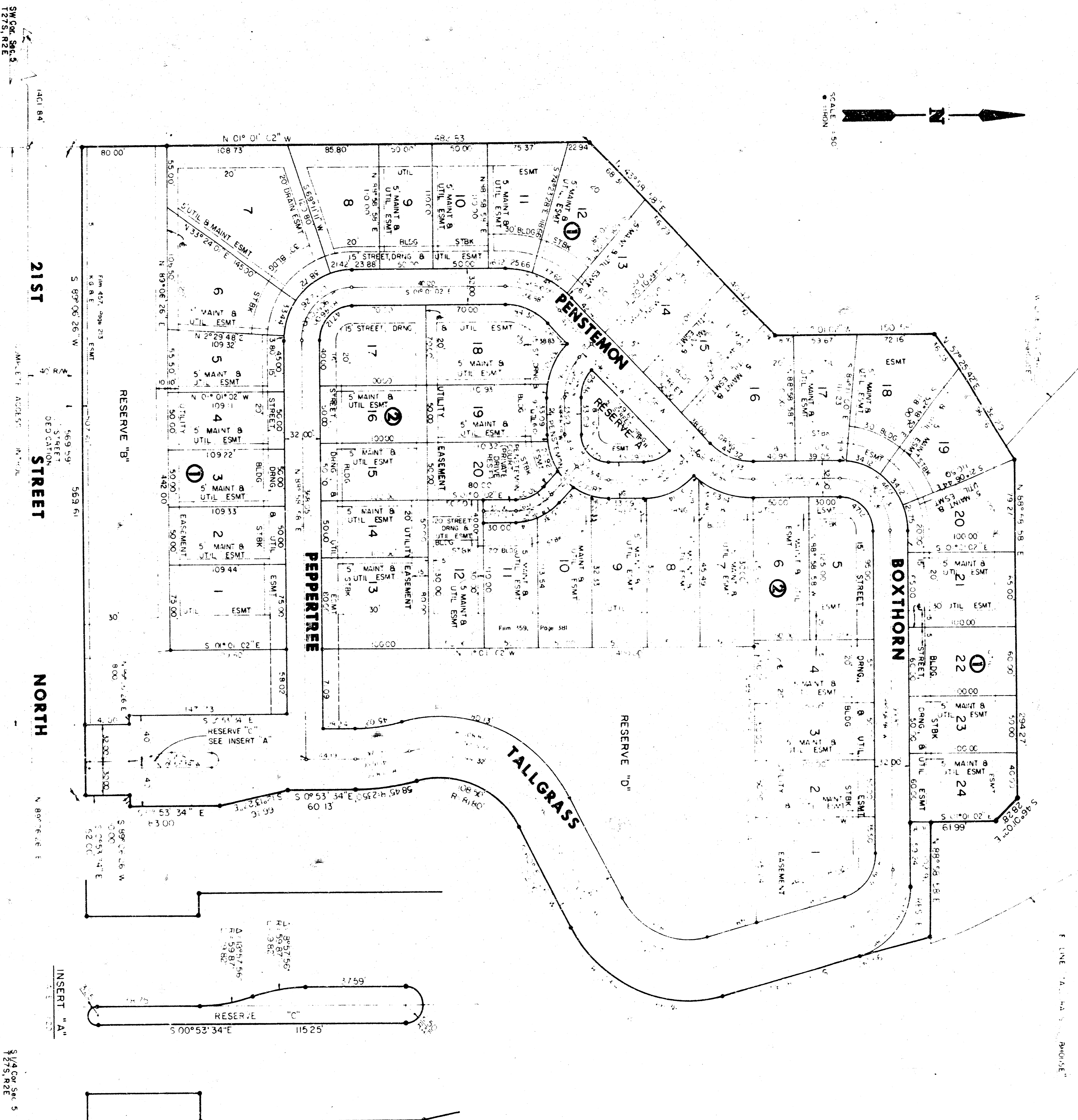
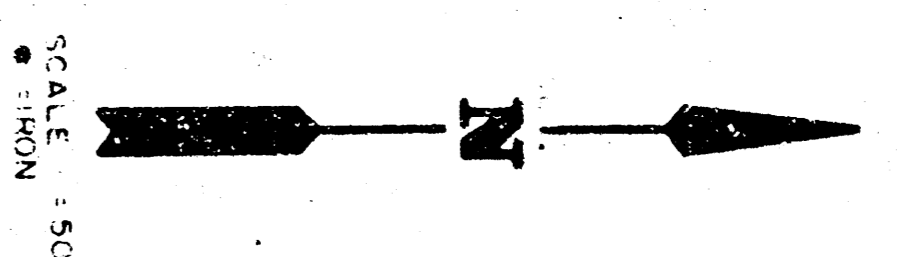
20.00
S.W. Cor. S.W. 1/4
Sec. 5 T.27S. R.2E

21ST STREET NORTH
2650.90 2147.40
N 89° 06' 26" E

Restrictive Covenants E-476 pg 326

FINAL PLAT OF WOODLANDS EAST

AN ADDITION TO WICHITA, SEDGWICK COUNTY, KANSAS

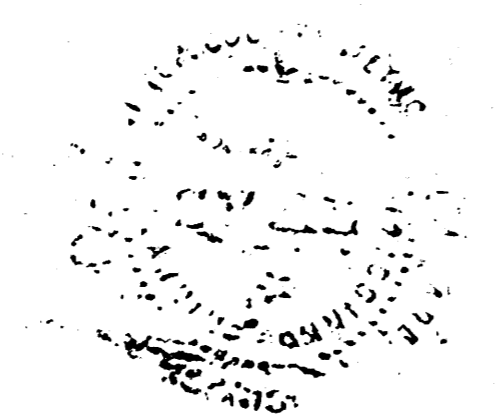


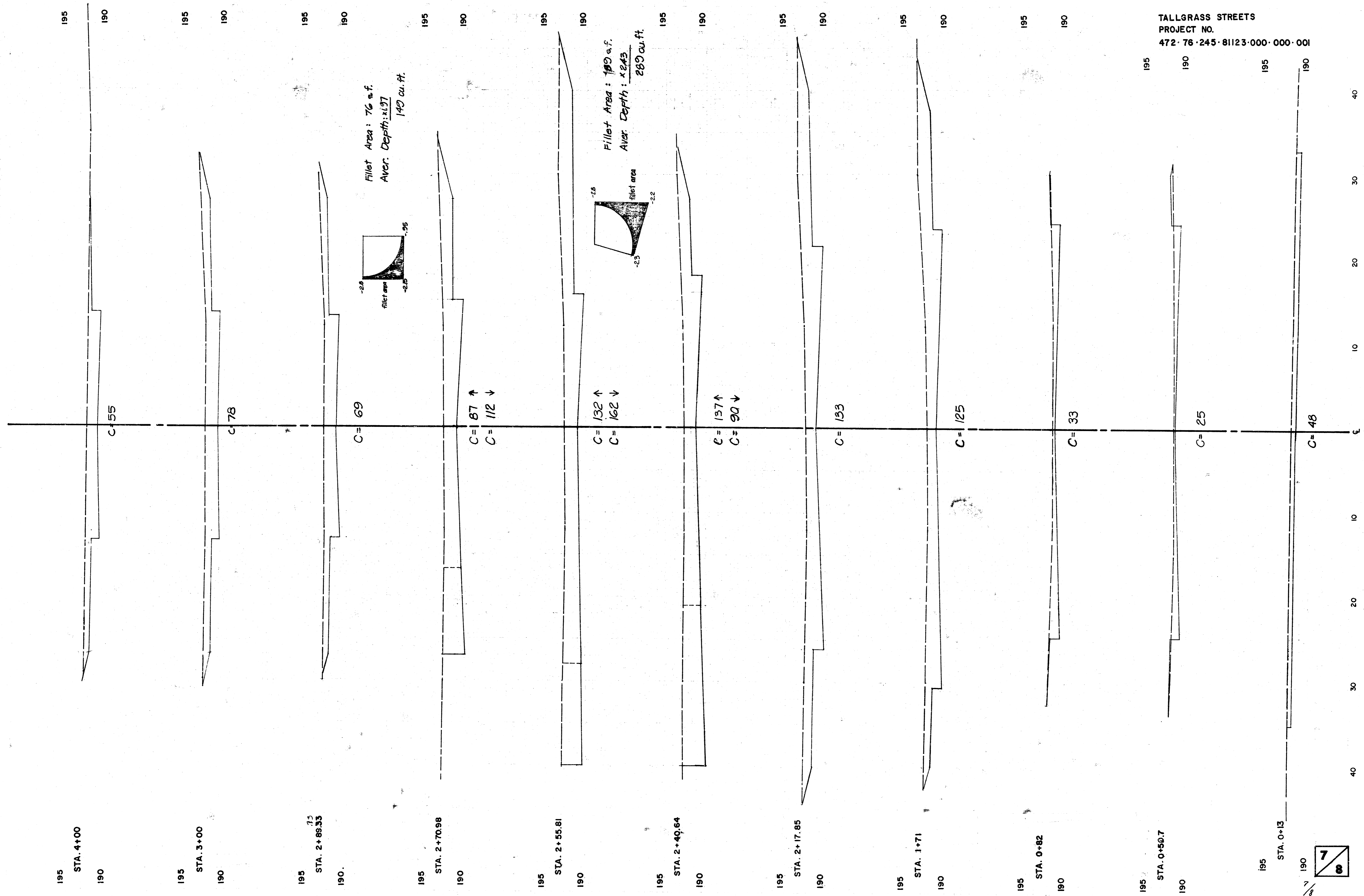
The undersigned, the duly authorized agent of the owners of the above described land, do hereby certify that the above plat is a true and correct copy of the original plat as the same appears in the office of the County Clerk of Sedgewick County, Kansas, at the City of Wichita, Kansas, on the 9th day of September, 1954.

J. E. Anderson
 J. E. Anderson
 201 North Rock Road, Suite 250
 Wichita, Kansas

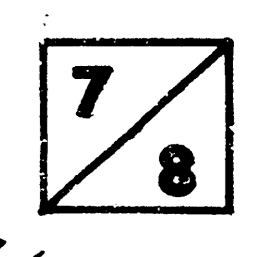
State of Kansas
 County of Sedgewick
 City of Wichita
 I, J. E. Anderson, County Clerk, do hereby certify that the above plat is a true and correct copy of the original plat as the same appears in the office of the County Clerk of Sedgewick County, Kansas, at the City of Wichita, Kansas, on the 9th day of September, 1954.

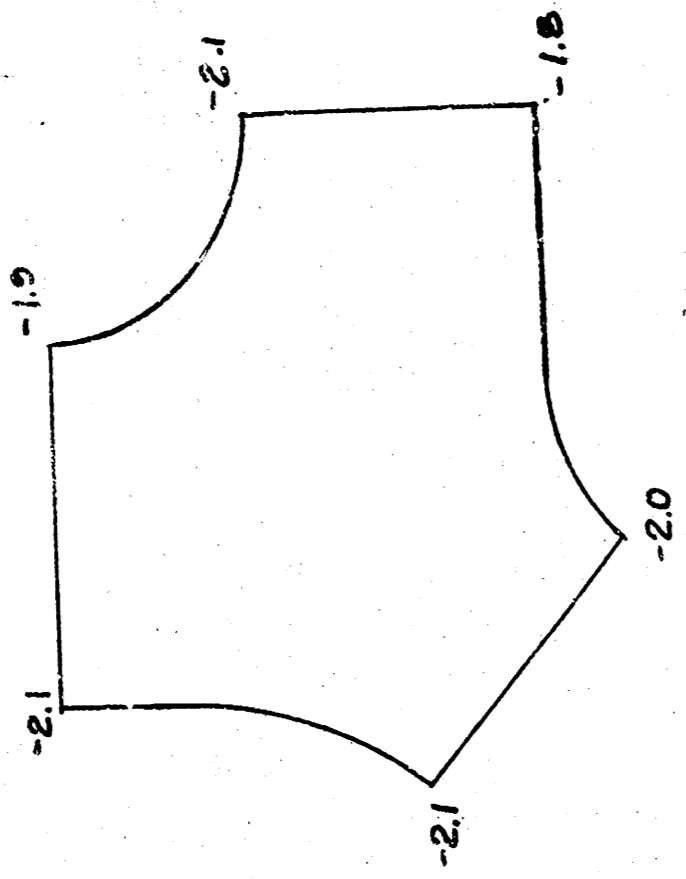
W. J. Butler
 W. J. Butler
 H. C. Brown
 H. C. Brown
 K. J. ...
 K. J. ...
 September 9, 1954





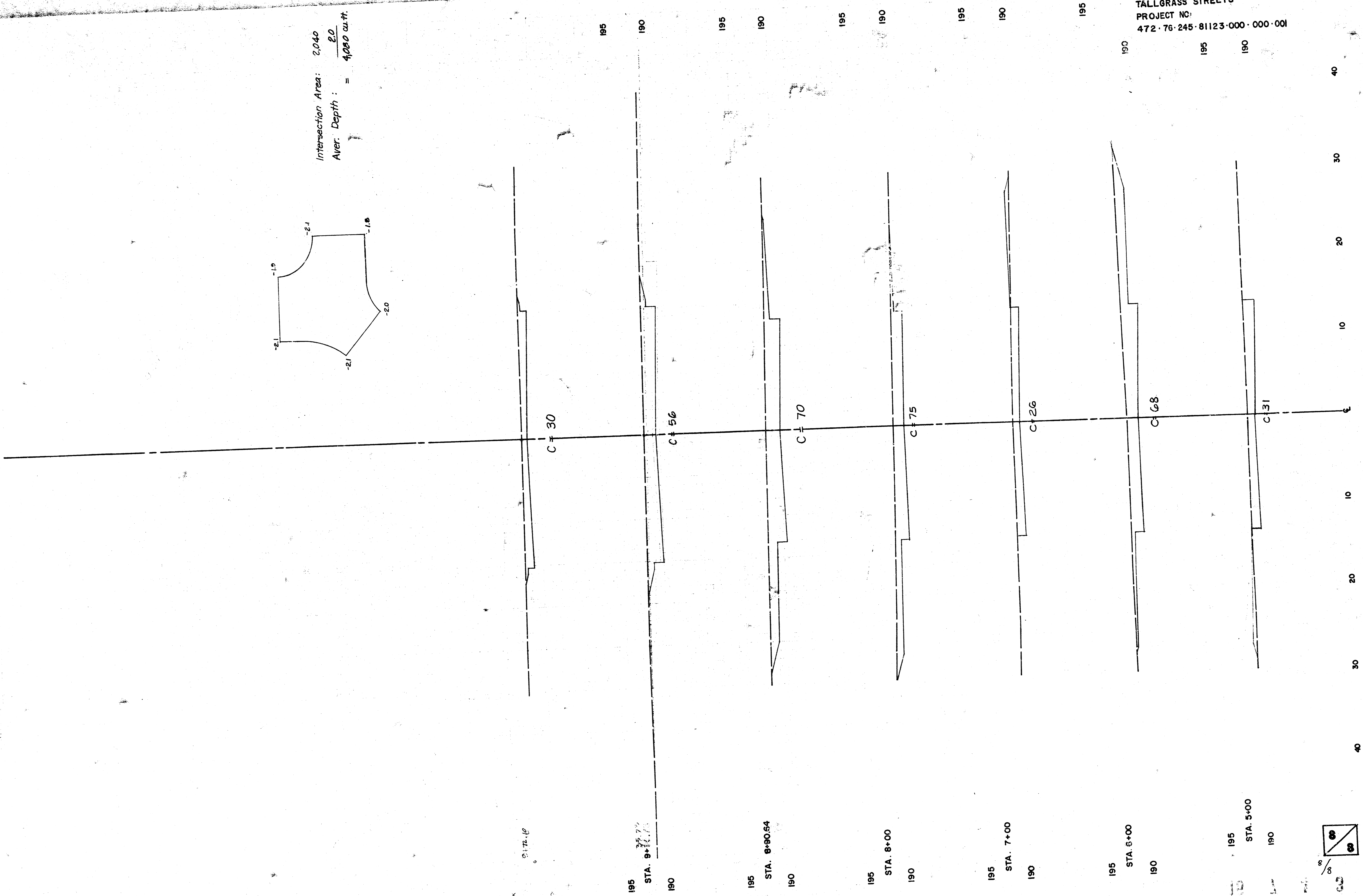
FILMED FROM THE BEST
 AVAILABLE COPY





Intersection Area: 2.040
 Aver. Depth: $\frac{2.0}{4.080 \text{ cu.ft.}}$

TALLGRASS STREETS
 PROJECT NO:
 472-76-245-81123-000-000-001



FILMED FROM THE BEST
 AVAILABLE COPY