

PAVING IMPROVEMENTS TO SERVE

LOTS 2,3,4

PERRY'S ADDITION

(WASHINGTON STREET)

Project Number

472-83087

Index Code

765550

CITY OF WICHITA, KANSAS

Michael E. Lindebak, P. E., City Engineer

INDEX

1. Cover
2. Plan Sheet
3. Pavement Marking Plan
4. Loop Detail
5. Junction Box Detail Sheets

GENERAL NOTES

1. Contractor will be required to provide notice to utility companies a minimum of twenty-four (24) hours prior to any excavation, as follows:

Kansas One-Call 687-2470

The Contractor must notify the following in case of an emergency:

Cablevision	262-4270
or	263-2061
K.P.L. Gas Service Company	383-8650
Kansas Gas & Electric Company	383-8600
Peoples Natural Gas Gas	942-8811
or	1800-303-0357
Southwestern Bell Telephone Company	1-571-2611
City of Wichita Water Department	268-4908
City of Wichita Sewer Department	268-4071
Kansas Gas Service	832-3168
or	832-3167

2. Exist. utilities and their locations, as shown on the plans, represent the best information obtainable for design. Location information has been obtained from the various utility companies and is either from company record drawings or company-provided field locations. The Contractor will be required to work around existing utilities which do not conflict with proposed construction.

3. The Contractor to verify utility locations prior to construction of this project.

4. Utility service and installation shall be coordinated with the respective utility owners. Contacts are:

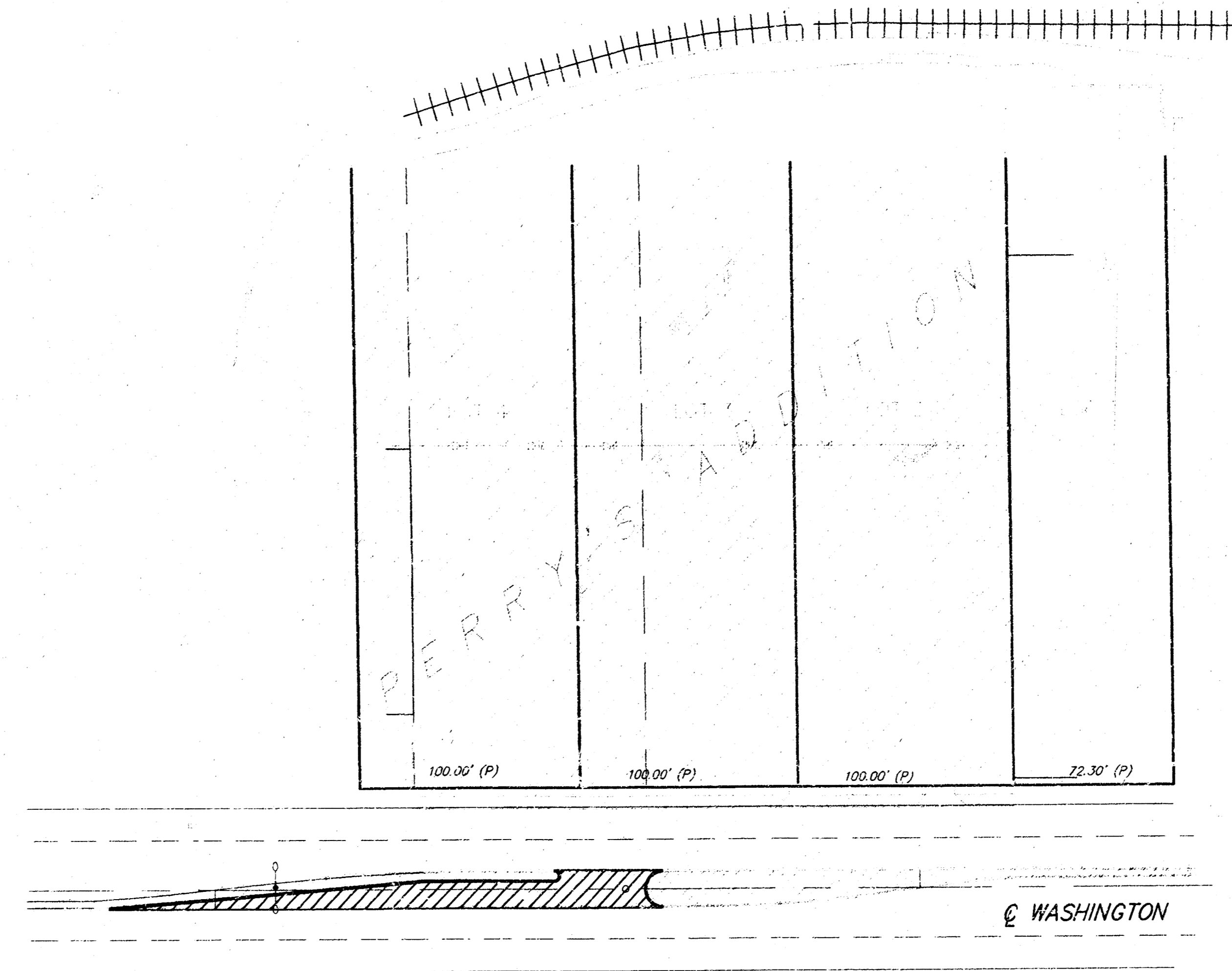
Kansas Gas Service	Jim Staltz	832-3122
K.G.E.	Russ Chitwood	261-6251
Wichita Water	Paul Bryant	268-4555
	Joe Bolinelly	268-4908
Southwestern Bell	Jim Tobin	268-2759

5. Traffic affected by the construction of this project shall be handled in accordance with the latest edition of the Manual on Uniform Traffic Control Devices.

6. A saw cut of at least one-half the depth of existing surface courses or one-fourth the depth of the existing total pavement thickness shall be provided at locations where proposed construction abuts an existing surface course or pavement for which partial removal of that surface or pavement is required. Sawed joint to facilitate removal within three (3) feet of existing joints will not be permitted and for such instances the limits of removal shall extend to the existing joint. Such saw cuts will not be paid for directly and this cost shall be considered as subsidiary to the removal of the surface or pavement.

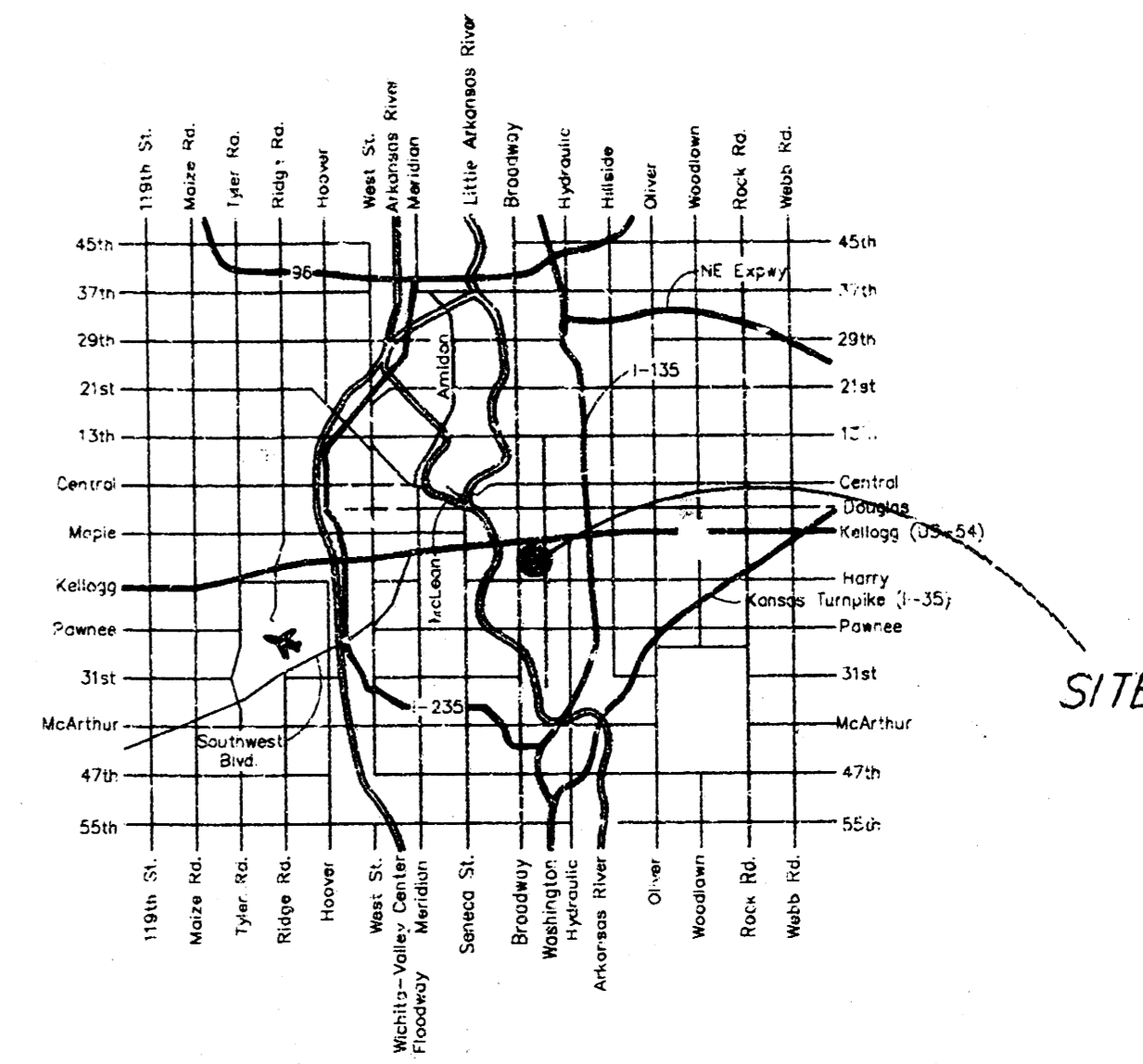
7. Rubble from the removal of miscellaneous structures and excavation which is to be wasted shall be disposed of on sites to be provided by the Contractor. These sites shall be approved by the Engineer as to suitability, appearance and site location. Locations that, in the opinion of the Engineer, will leave an unsightly appearance will not be approved.

8. All disposal sites must be approved by the Kansas Department of Health and Environment. Material either stockpiled or disposed of in a flood plain would require a Kansas State Board of Agriculture permit. Any material buried or stockpiled beyond approved construction limits would require additional archaeological investigations unless buried in a previously approved borrow location.

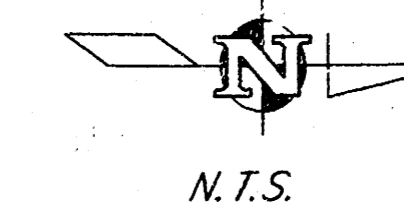


Legend:

□ Benefit District Included



LOCATION MAP



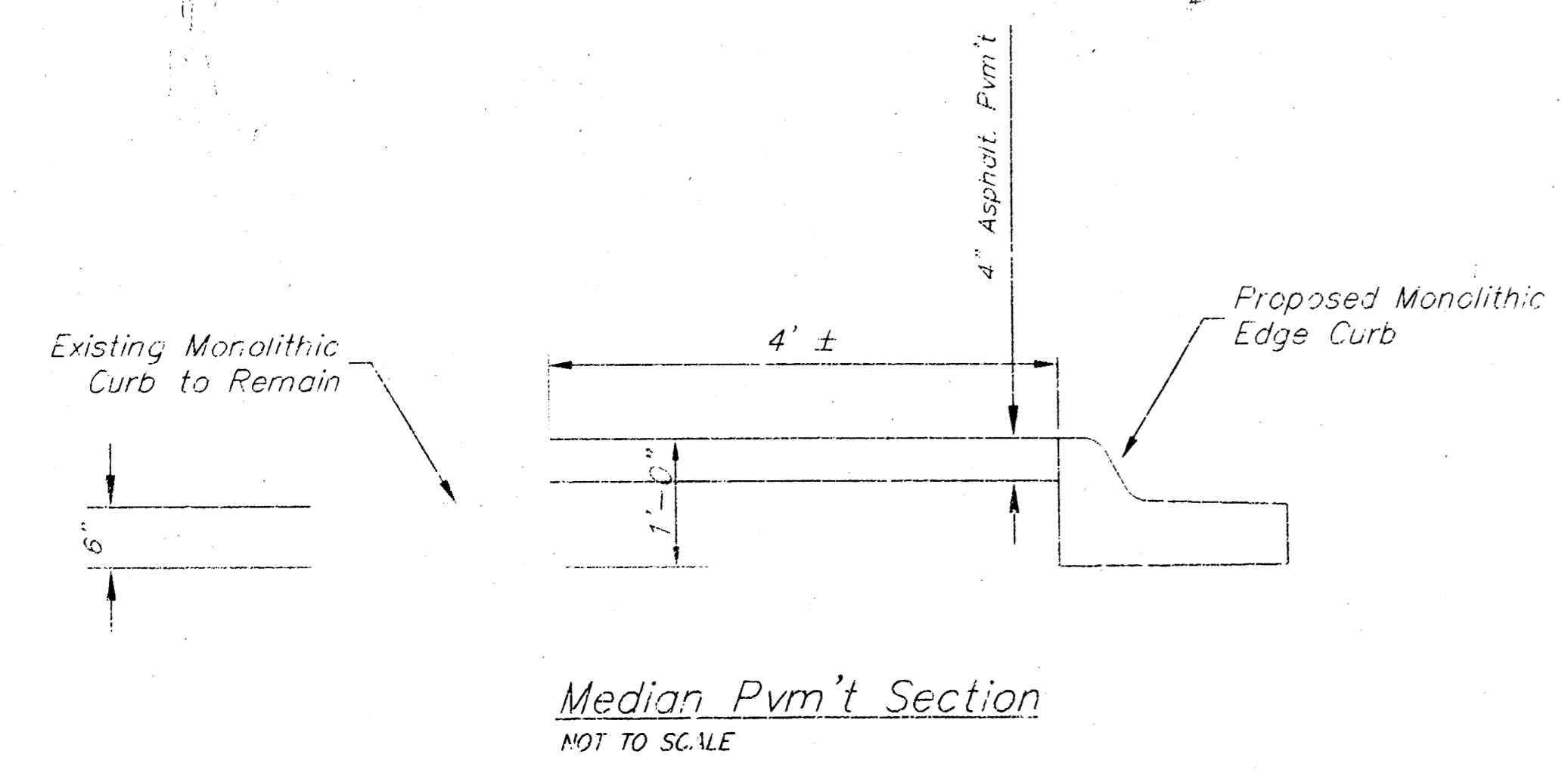
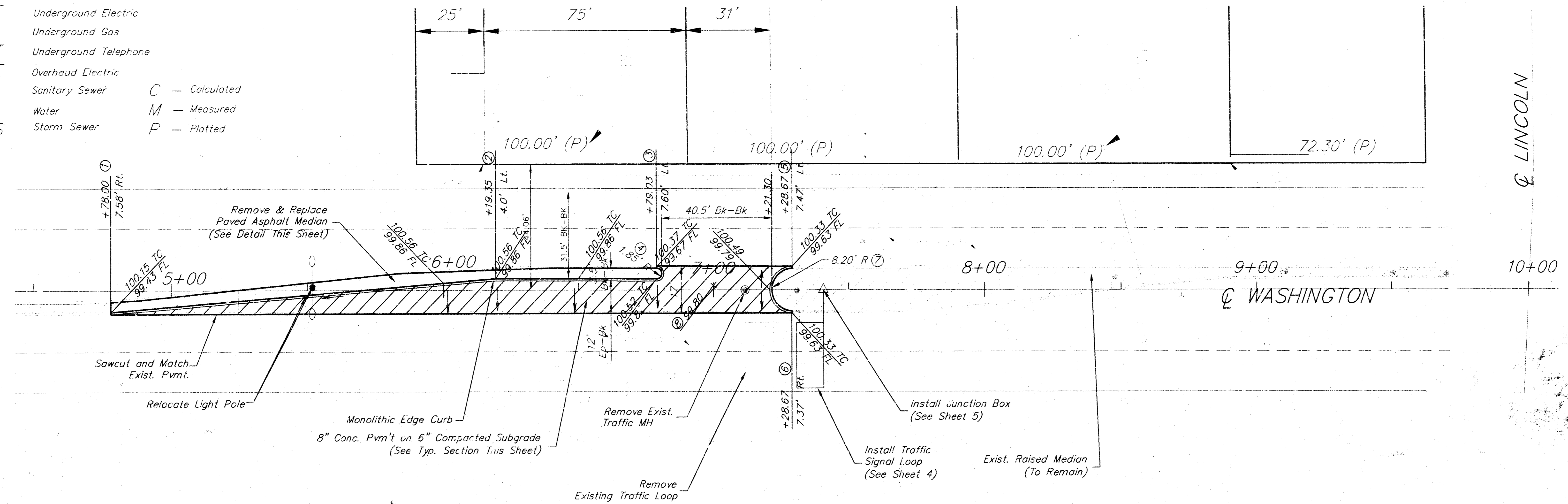
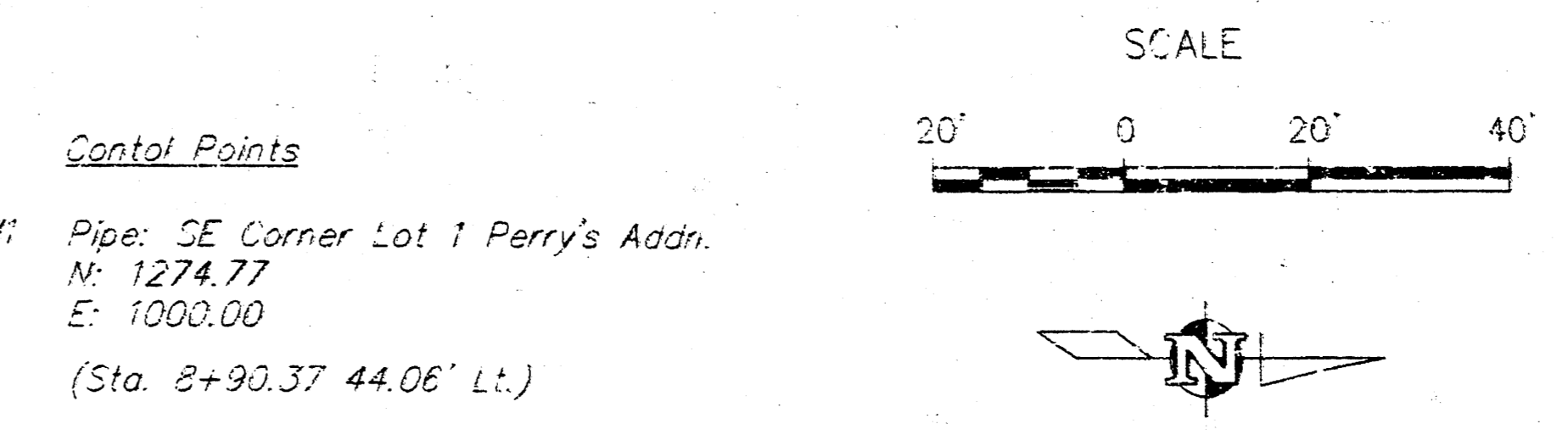
**ALLEN ENGINEERING SERVICES, P.A.**  
 254 S. Laura, Suite 210 Wichita, KS 67211  
 316/262-1281 fax 316/262-6773

Legend

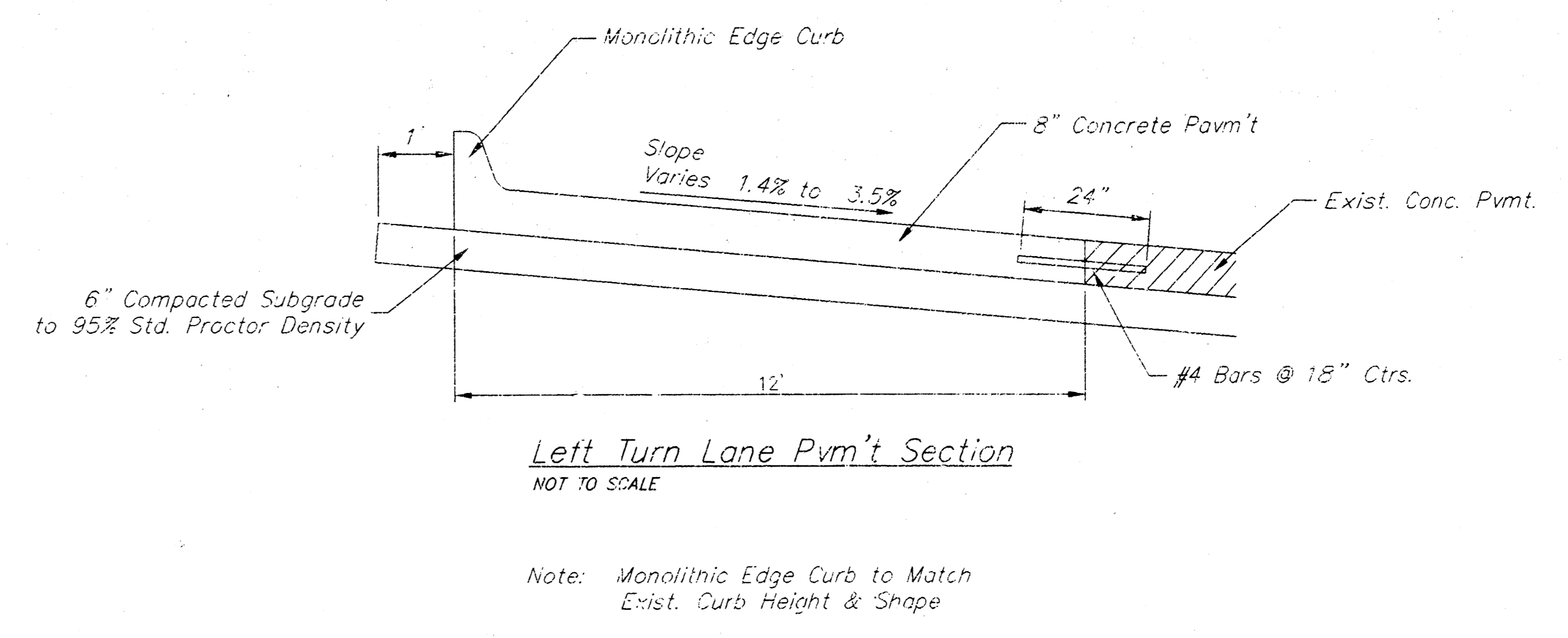
- ⊕ Fire Hydrant
- ↓ Light Pole
- Manhole
- Post
- Power Pole
- ++++ Rail Road
- TELE Telephone Pedestal
- Sign
- Down Guy

- ▨ Pvm't Removed
  - UGE Underground Electric
  - G Underground Gas
  - UGT Underground Telephone
  - OHE Overhead Electric
  - SS Sanitary Sewer
  - W Water
  - SWS Storm Sewer
- C — Calculated  
M — Measured  
P — Platted

COORDINATES:			
Pt#	Description	N	E
1	BC	-1051.64	962.63
2	BC	-1040.81	1003.49
3	PI	-1036.46	1063.50
4	Radius Point	-1038.51	1263.53
5	BC	-1063.54	1113.34
6	BC	-1044.16	1113.34
7	Radius Point	-1051.43	1113.29
8	Spot Elev.	-1042.48	1084.62



Note To Contractor:  
Please Notify Jim Parks, City of Wichita Traffic Dept., (316) 268-4033 At Least 48 hrs. Prior To Removing Exist. Traffic Loop.



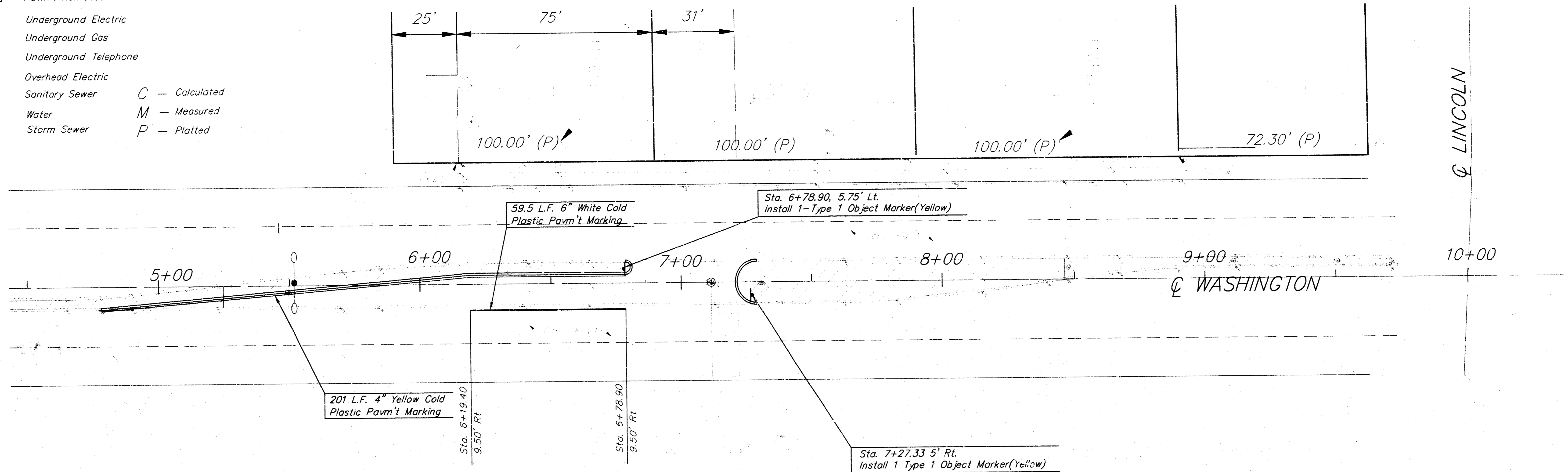
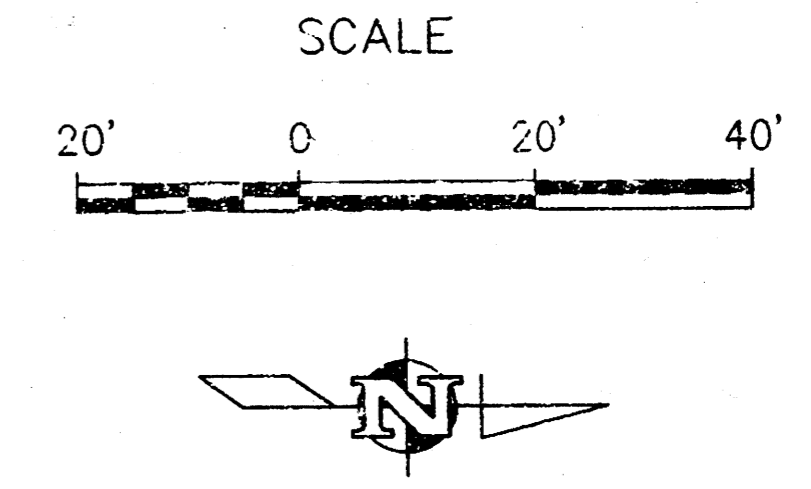
	PROJECT NUMBER <b>472-83037</b>		AM. NO. 57537		<b>CITY OF WICHITA</b> <b>Sta. 4+86.80 to 10+00</b> Washington Street Improvements	SHEET <b>2</b> OF <b>5</b>
	DESIGN JA	DRAWN JG	FILE PLANN	DATE 7/24/28		

**Legend**

- ⊕ Fire Hydrant
- ⊥ Light Pole
- Manhole
- Post
- ⚡ Power Pole
- ++++ Rail Road
- TELE  
☒ Telephone Pedestal
- Sign
- Down Guy
- ▨ Pav't Removed
- UGE Underground Electric
- G Underground Gas
- UGT Underground Telephone
- OHE Overhead Electric
- SS Sanitary Sewer    C — Calculated
- W Water                    M — Measured
- SWS Storm Sewer        P — Platted

**Control Points**

- #1 Pipe: SE Corner Lot 1 Perry's Addn.  
N: 1274.77  
E: 1000.00  
(Sta. 8+90.37 44.06' Lt.)
- #2 Pipe: NE Corner 25' Esm't  
Lot 4 Perry's Addn.  
N: 1000.00  
E: 1000.00  
(Sta. 6+14.68 44.06' Lt.)



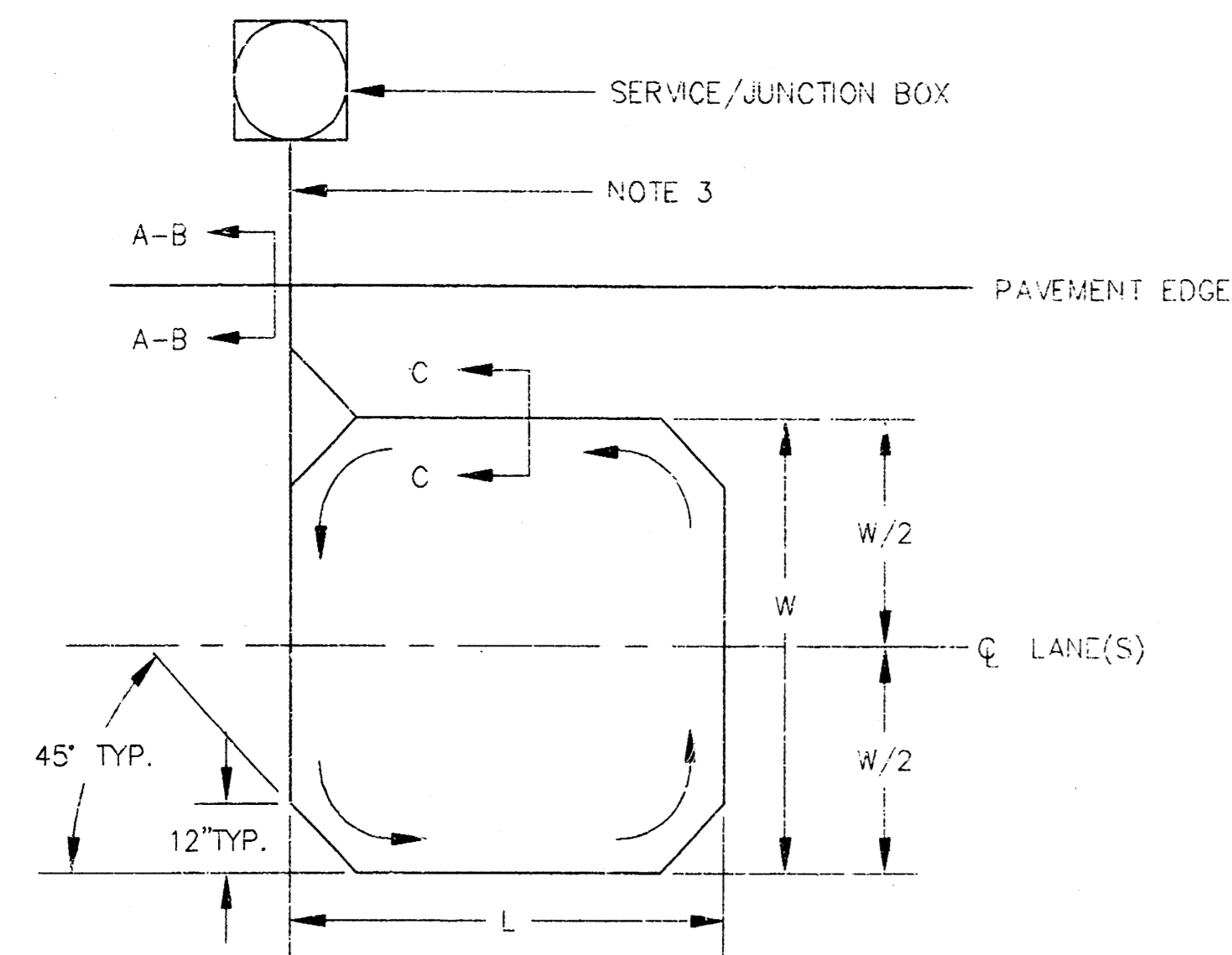
- NOTES:**
- 1) All Pav't Markings shall be cold plastic, meeting KDOT standard specifications.
  - 2) All median noses shall be painted w/reflective yellow paint.

	PROJECT NUMBER <b>472-89037</b>		AM NO. 97037		<b>CITY OF WICHITA</b> <b>Signing/Striping Plan</b> Washington Street Improvements	SHEET <b>3</b>
	DESIGN TA	DRAWN JG	FILE Pvtking	DATE 7/24/98		SCALE 1"=20'

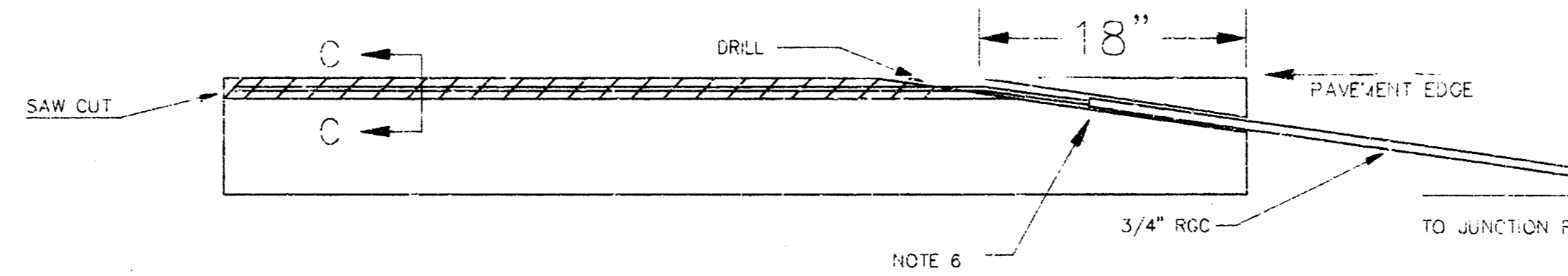
FHWA REGION NO.	PROJECT NO.	YEAR	SHEET NO.	TOTAL SHEETS
7	KANSAS			

# Loop Construction/Installation Details

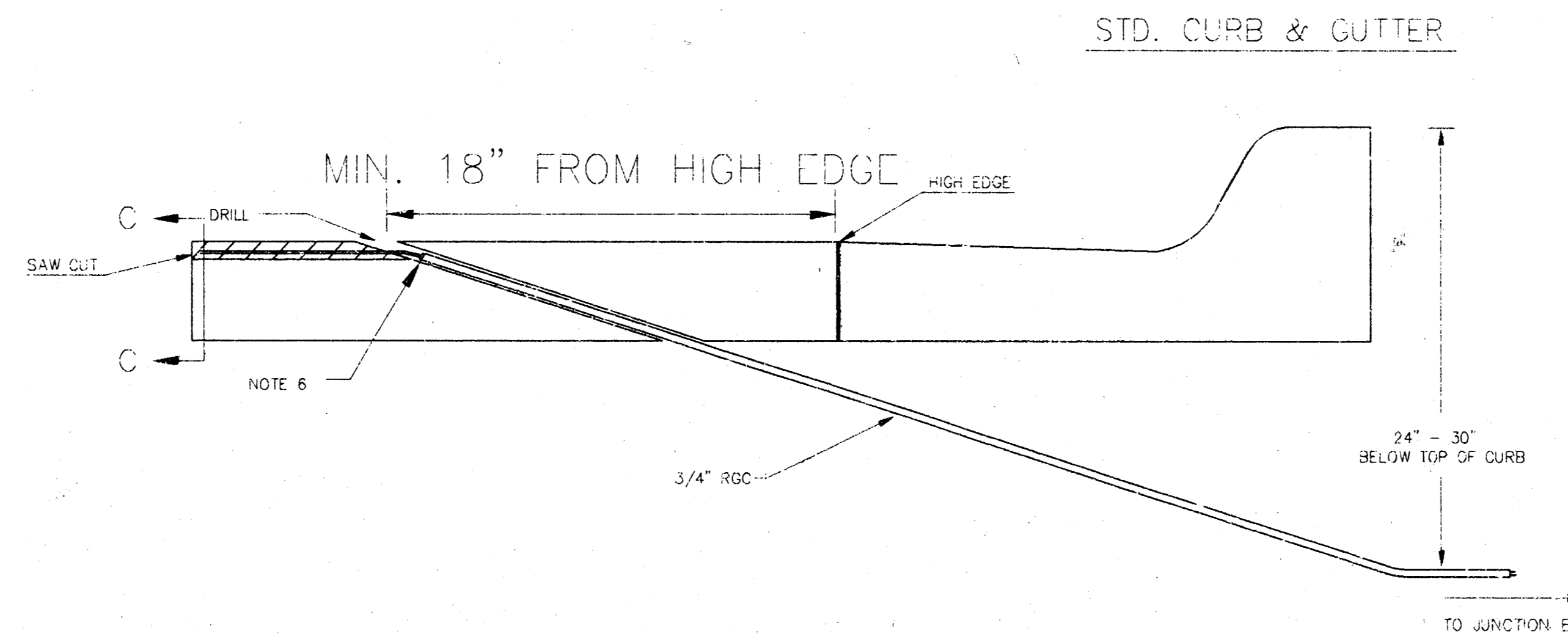
## Typical Conventional Loop Installation



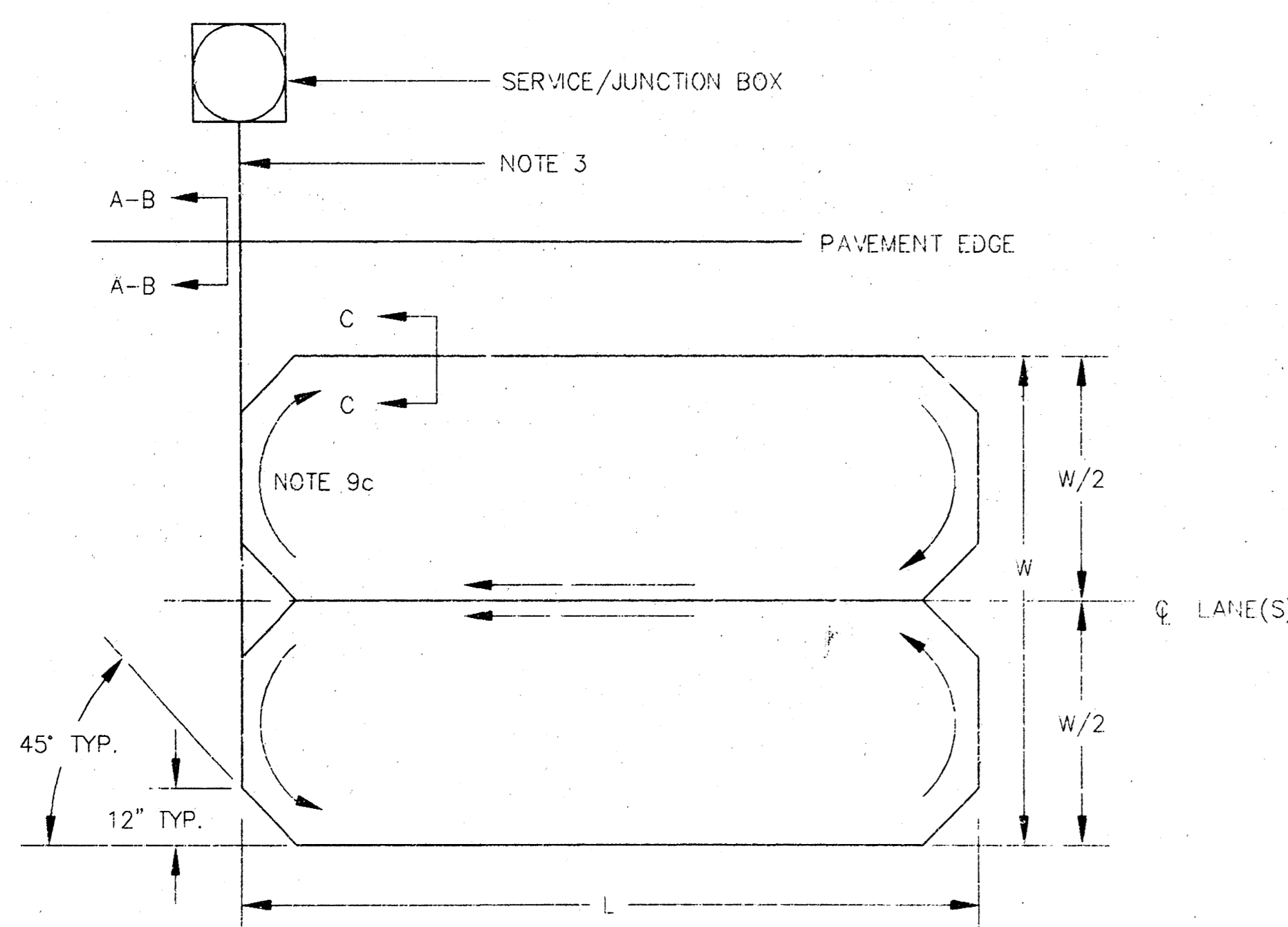
## Detail A - No Curb & Gutter



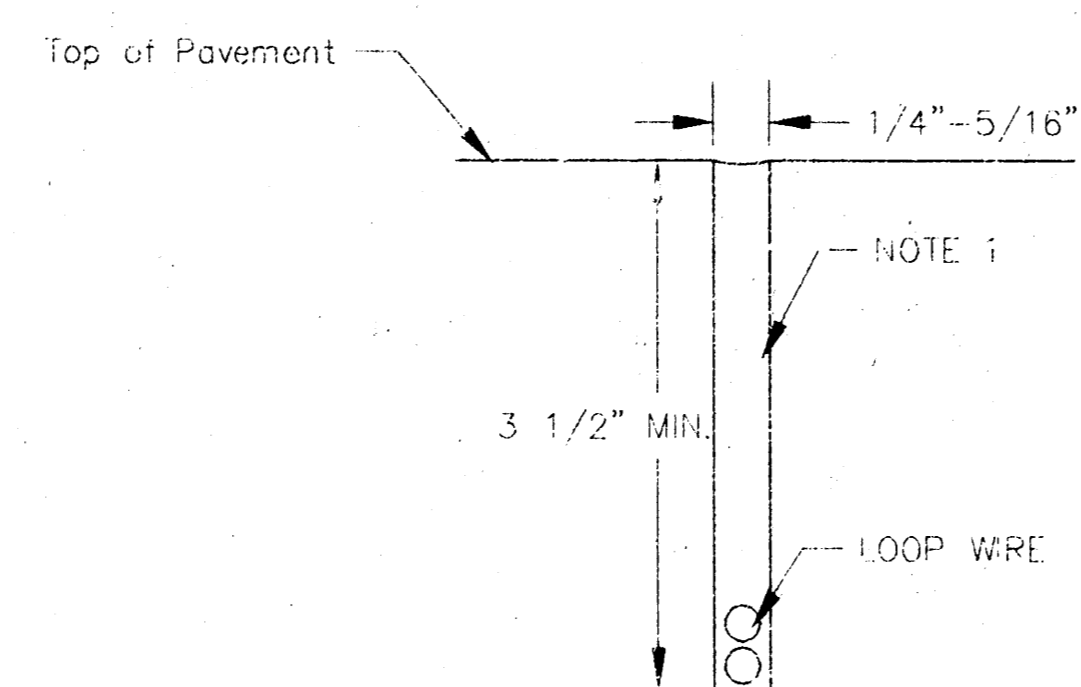
## Detail B - Full Curb & Gutter



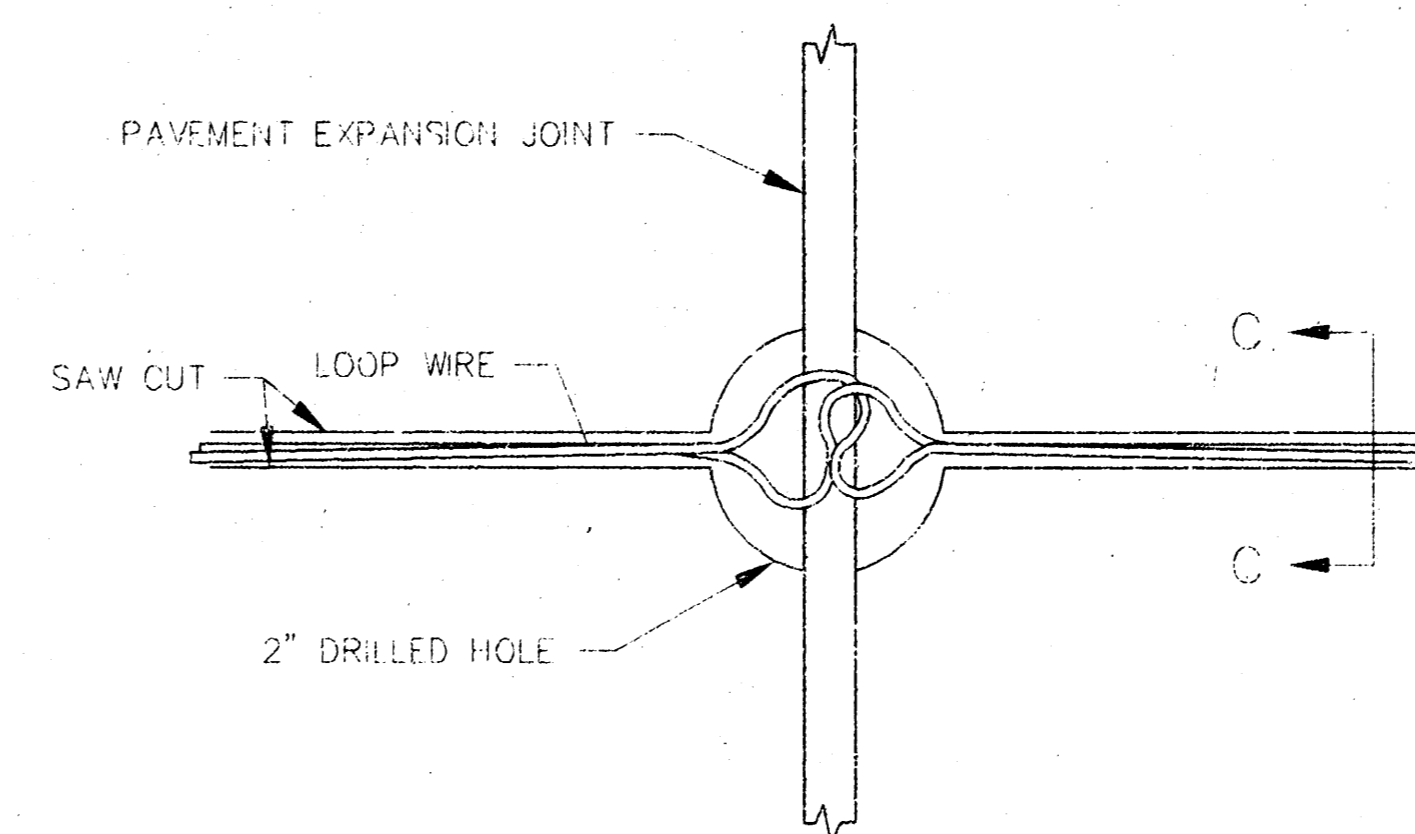
## Typical Quadrapole Loop Installation



## Detail C - Saw Cut



## Detail D - Pavement Joint Crossing



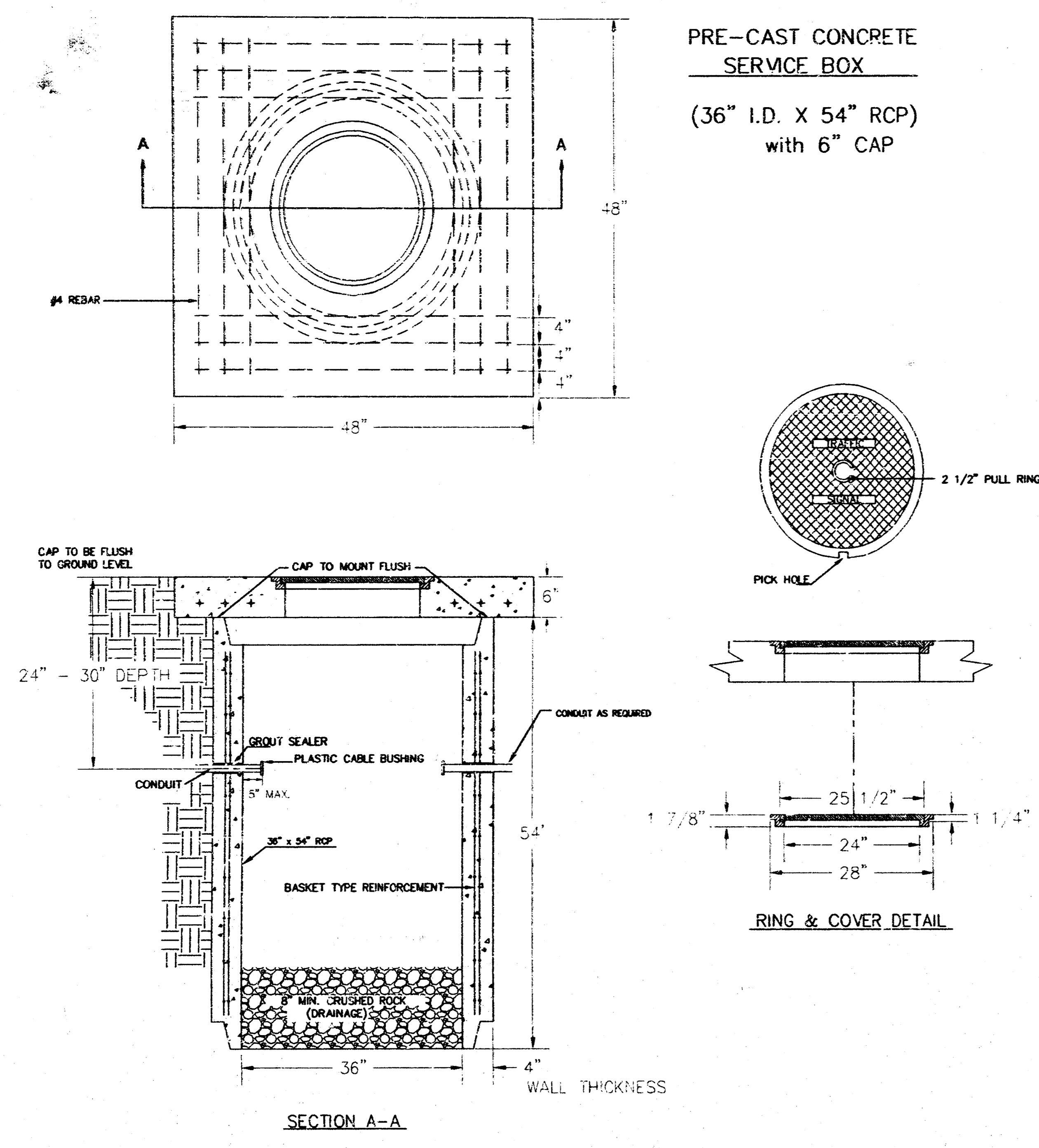
### NOTES:

1. Loop saw cut shall be filled with approved sealant to within 1/8" of pavement surface.
2. All loops shall be wound in the same direction.
3. Loop wire between the loop and the service/junction box shall be twisted 6 turns per meter.
4. No expansion joint in the pavement or curb & gutter shall be utilized in the placement of loop wire runs or conduit embedding.
5. The loop wire shall not pass through any part of any drive approach and/or corner radius.
6. All conduit ends shall be sealed with duct seal to prevent loop sealant from entering conduit.
7. Loop feeder conduit shall be a minimum of 12" from any other loop feeder conduit.
8. Saw cuts running parallel with expansion joint or any other saw cut shall be a minimum of 12" apart.
9. a. Loops 25' or less - 4 turns.  
b. Loops over 25' - 3 turns.  
c. Quadrapole loops - 2-4-2 turns.
10. The loop wire shall have 2" slack at all crossings of pavement joints to allow for expansion/contraction of pavement. - Detail D

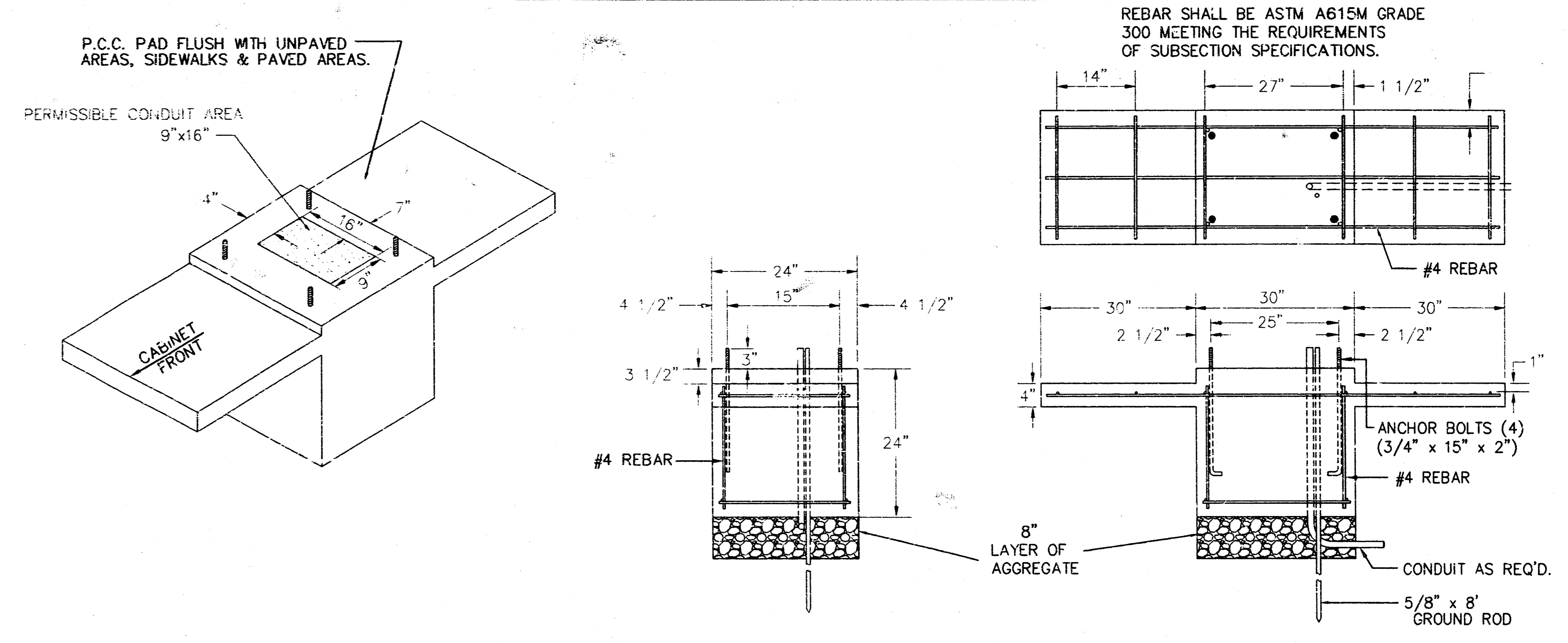
REV.	DATE	COMMENTS

PROJECT DESCRIPTION		
<b>LOOP DETECTOR CONSTRUCTION/INSTALLATION DETAILS</b>		
PROJECT MARK# 472-83037 (765550)		
DRAWN BY: T.M.	APPROVED BY:	DATE: JUL 96
SCALE: NO SCALE	REVISIONS:	
<b>CITY OF WICHITA</b>		
<b>DEPARTMENT OF PUBLIC WORKS</b>		
TRAFFIC ENGINEERING DIVISION K. WOODARD, P.E., TRAFFIC ENGINEER		SH: 4 OF 5

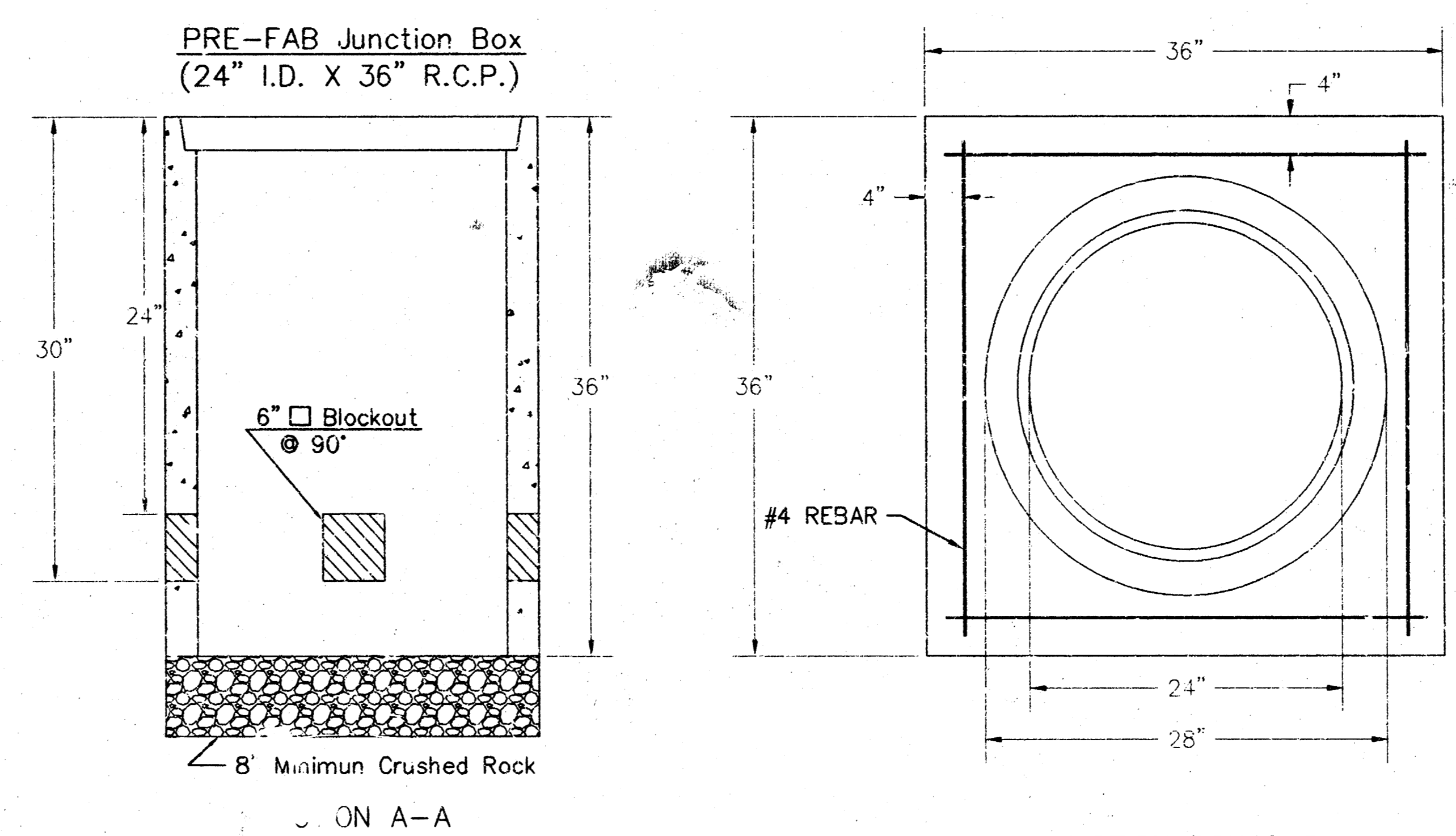
**SERVICE BOX CONSTRUCTION/INSTALLATION DETAILS**



**170 CONTROLLER PAD DETAILS**



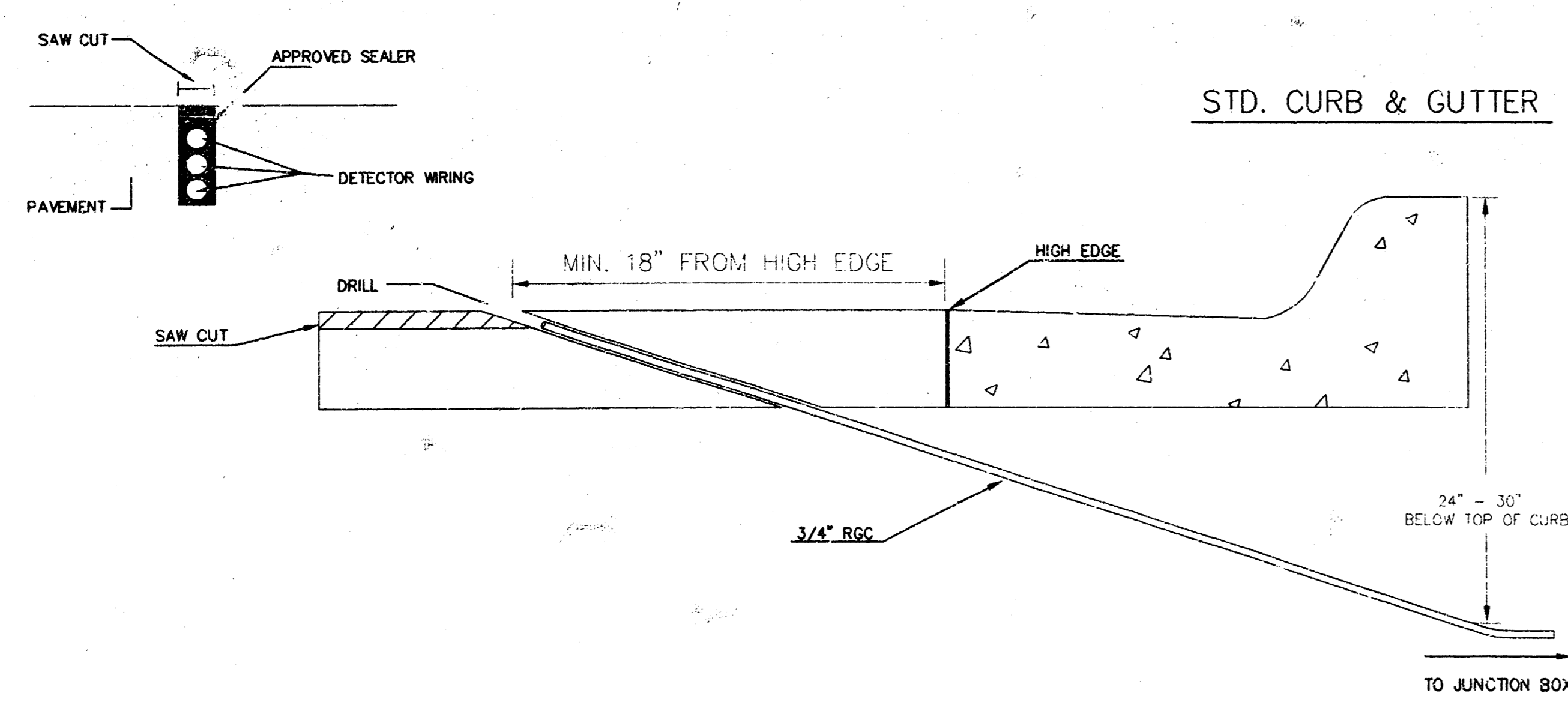
**JUNCTION BOX DETAILS**



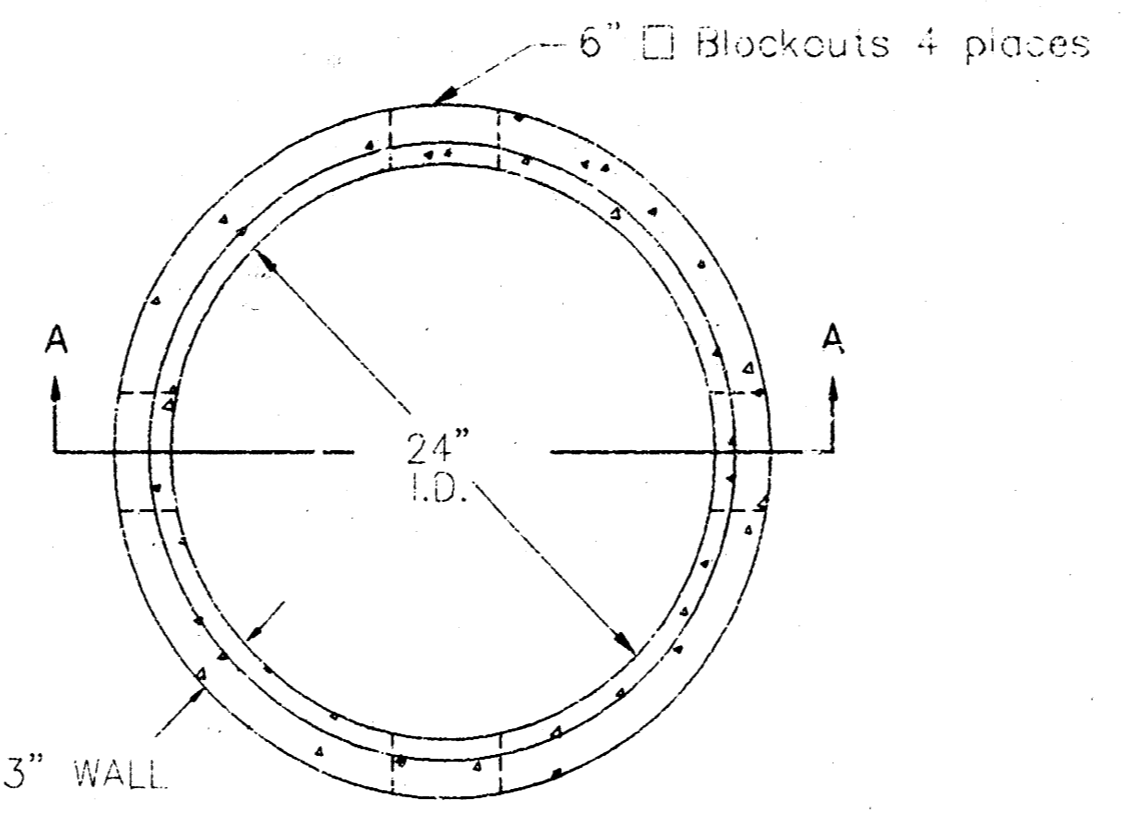
**NOTES:**

- SERVICE & JUNCTION BOX:**
- CONDUIT CONNECTION TO BE FLUSH TO WITHIN 125 mm OF INSIDE FACE OF SIDE WALL, CONDUIT TO DRAIN INTO SERVICE BOX.
  - CONDUIT CONNECTIONS TO SERVICE BOX SHALL BE TERMINATED WITH PLASTIC CABLE BUSHING.
  - CONDUIT SHALL BE SEALED WITH APPROVED SEALER AT INSIDE WALL FACE.
  - ALL SERVICE & JUNCTION BOXES TO HAVE 200 mm OF CRUSHED ROCK.
- TRENCHING:**
- DEPTH TO BE 30" MINIMUM WITH ROCK & STUBBLE FREE BACKFILL TO SERVE AS BEDDING MATERIAL. MAINTAIN MINIMUM CONDUIT DEPTH IN TRENCH.
  - BACKFILL TO BE COMPACTED IN 6" LOOSE LIFTS BY HAND OR MECHANICAL TAMPING TO A 95% STANDARD DENSITY.
- CONDUIT:**
- SLOPE CONDUIT TO DRAIN AS DIRECTED BY THE ENGINEER.
  - 3" RIGID STEEL CONDUIT BTWN. SERVICE BOXES.  
1 1/4" " " BTWN. SERVICE & JUNCTION BOXES.  
3/4" " " BTWN. JUNCTION BOXES.  
3/4" " " BTWN. JUNCTION BOX & DETECTOR LOOP SAW CUT.

**CONDUIT/DETECTOR WIRE INSTALLATION DETAILS**



**JUNCTION BOX CAP**  
36" x 36" x 6"  
TOP OF CAP TO BE FLUSH WITH GROUND LEVEL.



SEE SERVICE BOX INSTALLATION FOR RING & COVER DETAILS.

REV. DATE	COMMENTS	INT.

PROJECT DESCRIPTION		
<b>SERVICE/JUNCTION BOX, CONTROLLER PAD CONSTRUCTION/INSTALLATION DETAILS</b>		
PROJECT NUMBER 472-83037 (765550)		
DRAWN BY: T.M.	SCALE: NO SCALE	REVIEWED BY:
DATE: APR. 96	DATE:	
CITY OF WICHITA DEPARTMENT OF PUBLIC WORKS		
DIVISION OF TRAFFIC ENGINEERING K. WOODARD, P.E. TRAFFIC ENGINEER		SHEET 5 OF 5