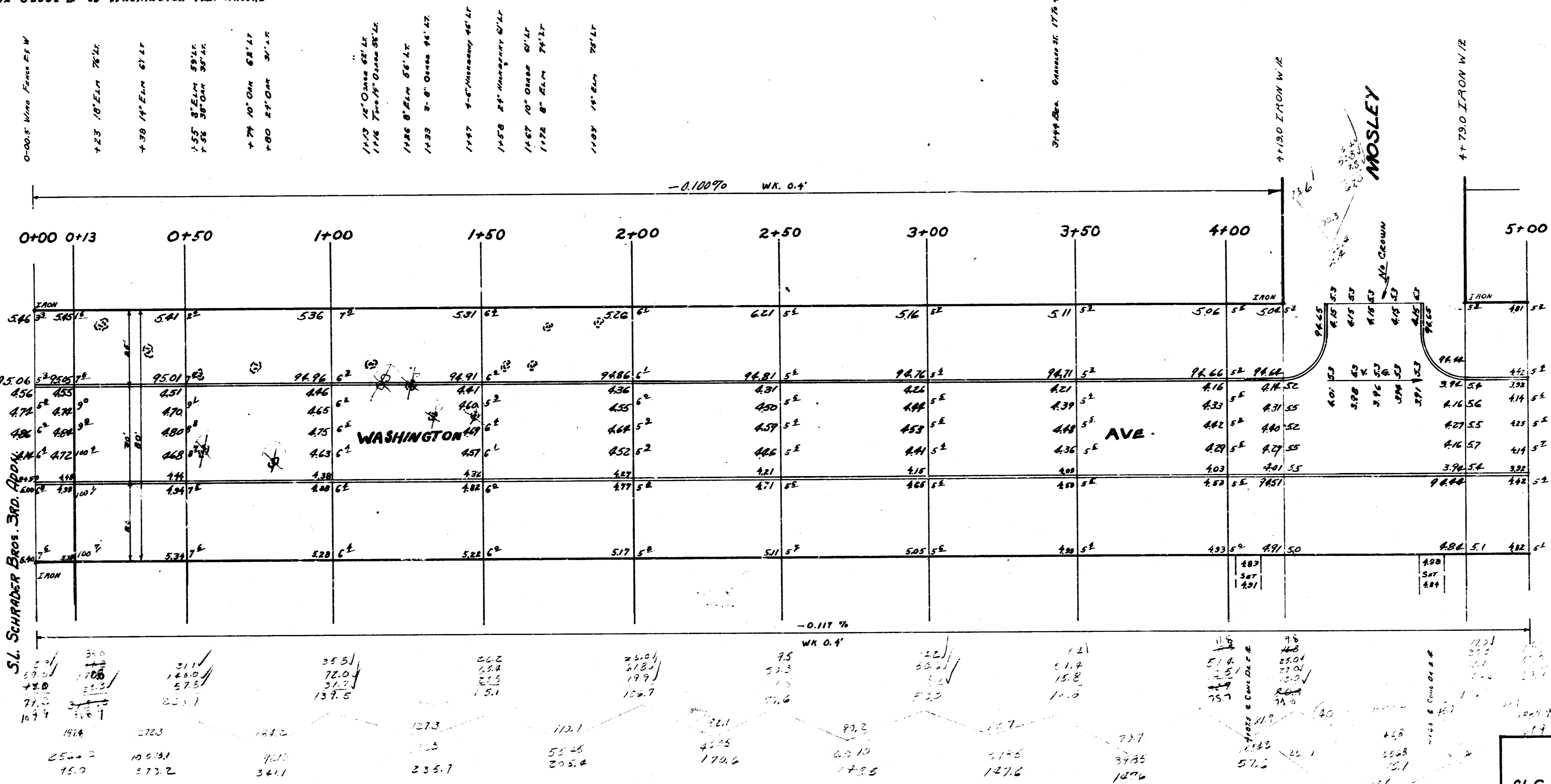


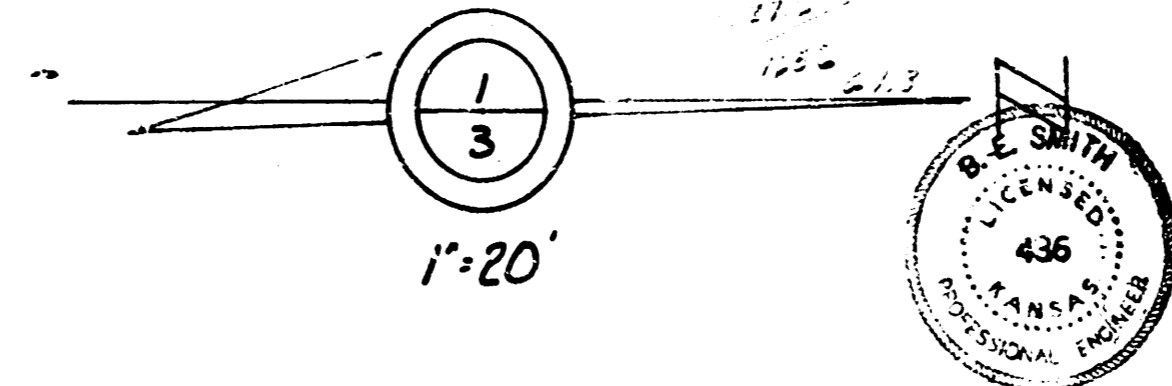
BM 97.66 'M' in Muller Top F.P. in front of No. 2902 Washington
 BM 93.53 'C' in Globe E. of Washington N.L. Wassall

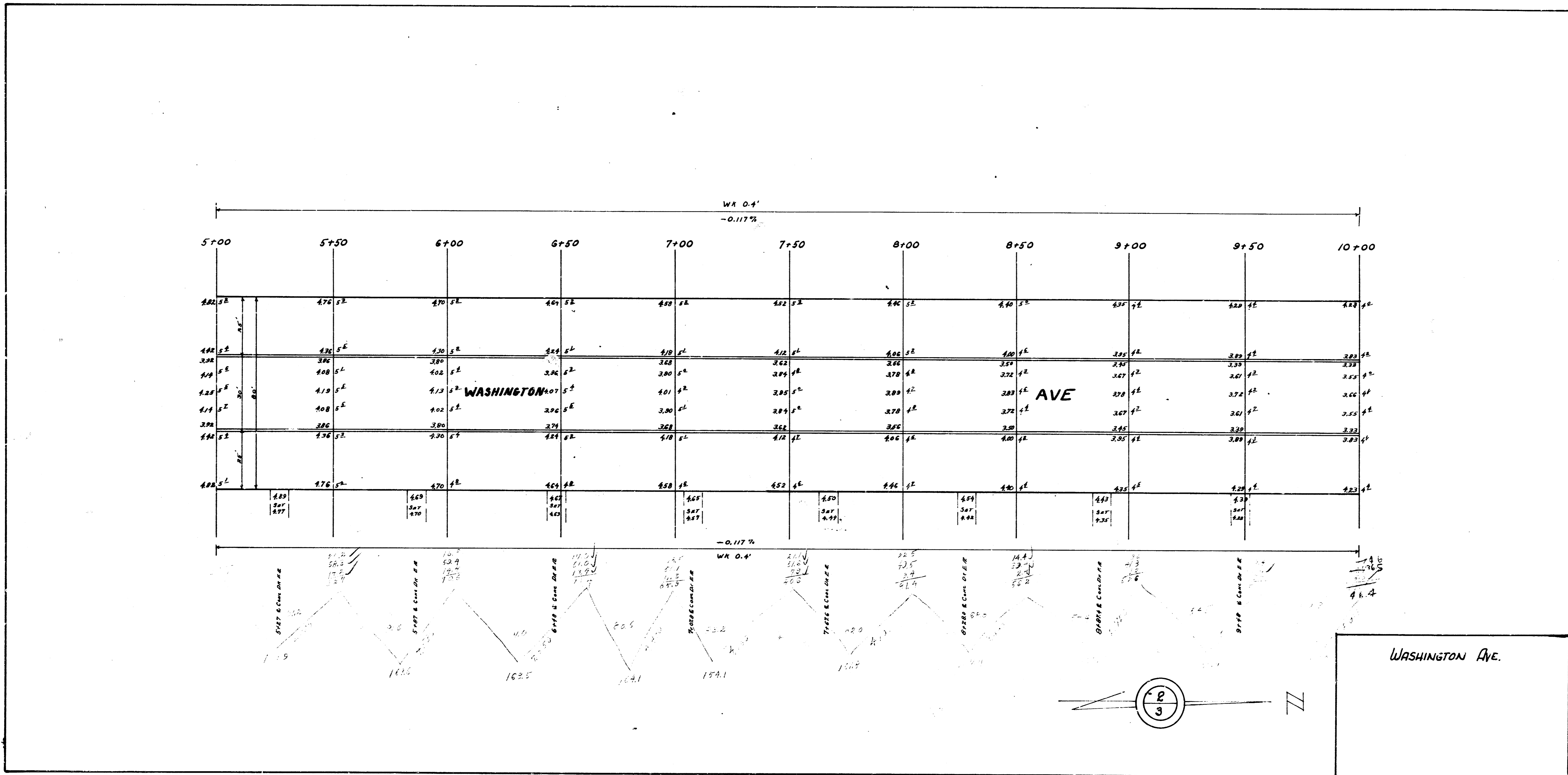


1/2" = 100'

WASHINGTON AVE.
 ST. SCHRADER BRIDGE TO N.L. WASSALL
 30' CONC. & C.B.

CITY OF WICHITA, KANSAS
 B.E. SMITH CITY ENGINEER
 JAN. 10, 1955 PROJ. NO. C12-134





Construction of the inlets and laterals as shown, is a part of storm water sewer project #C22-76

Inlets & pipe to be installed to storm sewer

