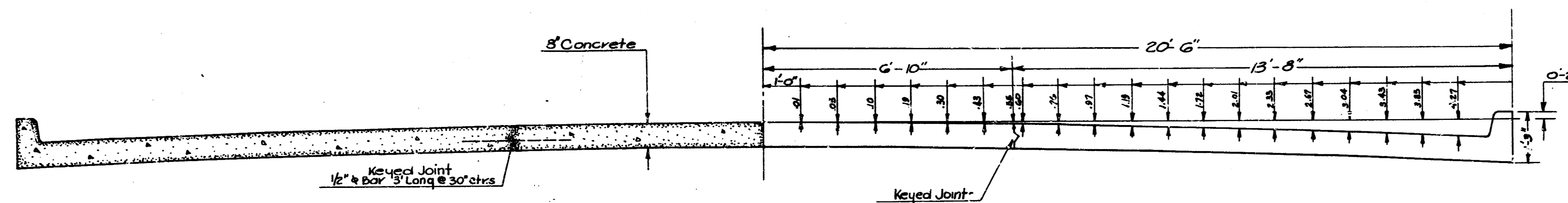
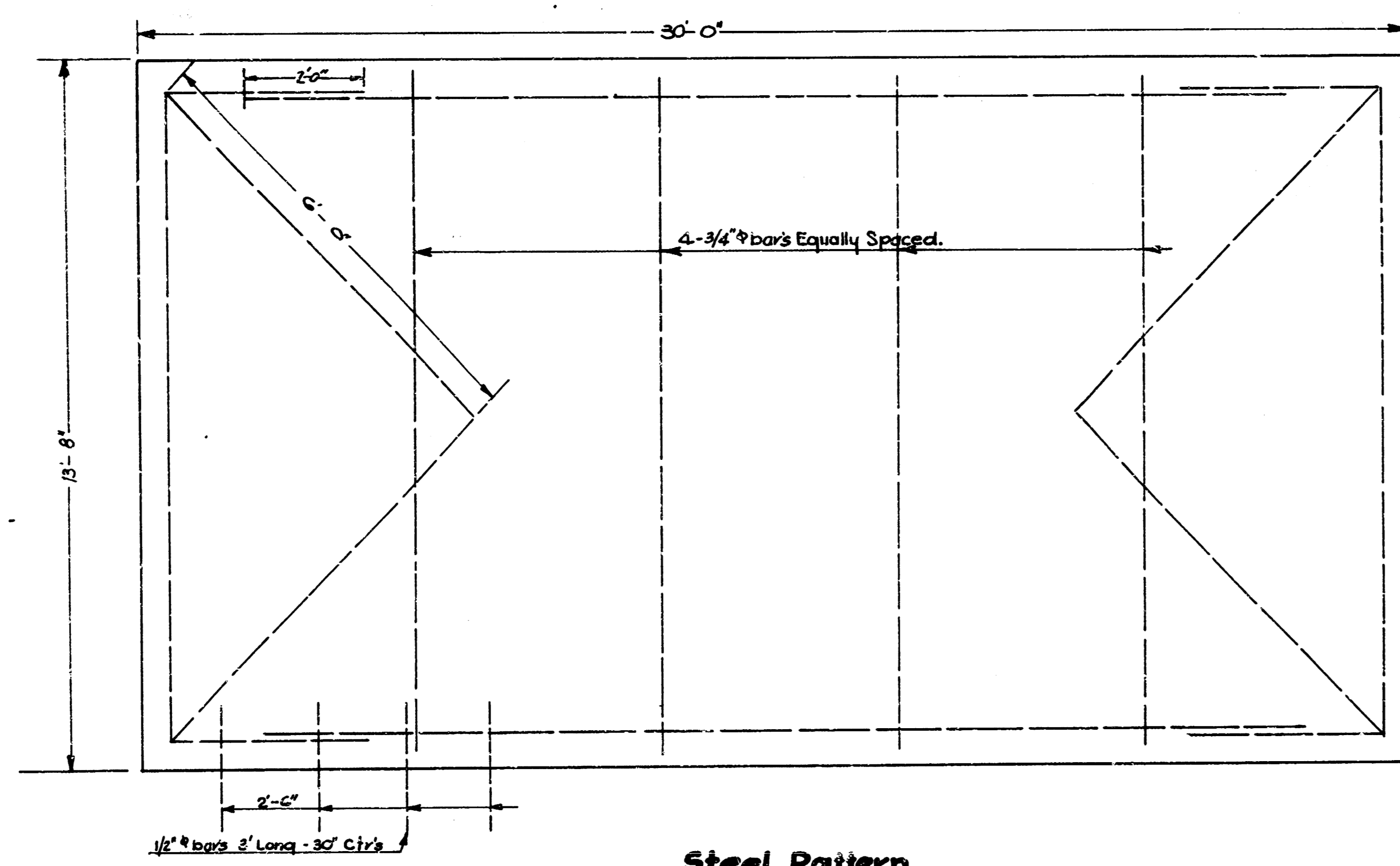


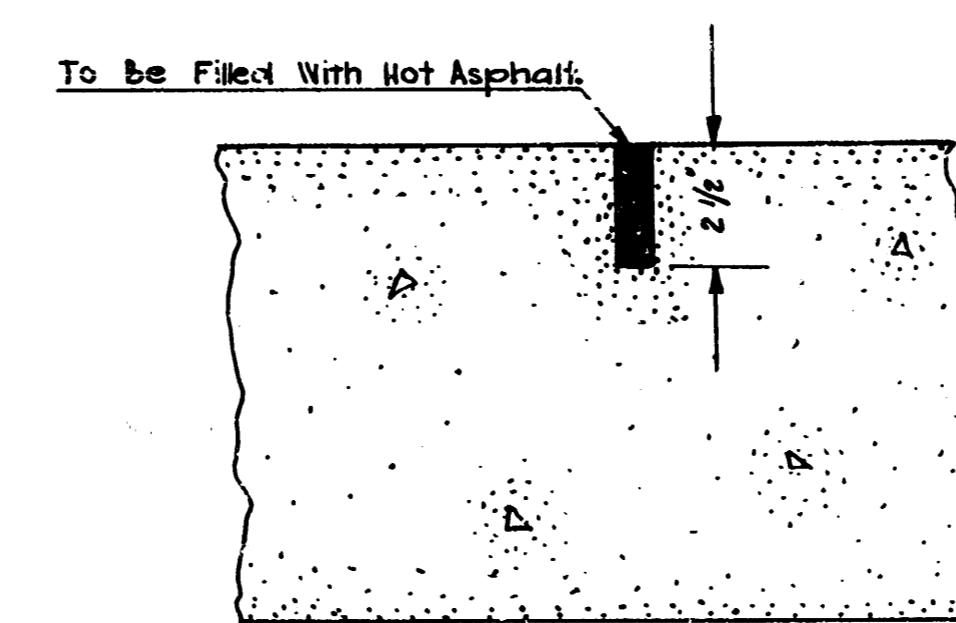
WASHINGTON
 AVE.
 N.L. CENTRAL - S.L. MURDOCK



Typical Section
 Scale: 1/2" = 1'-0"



Steel Pattern
 No Scale

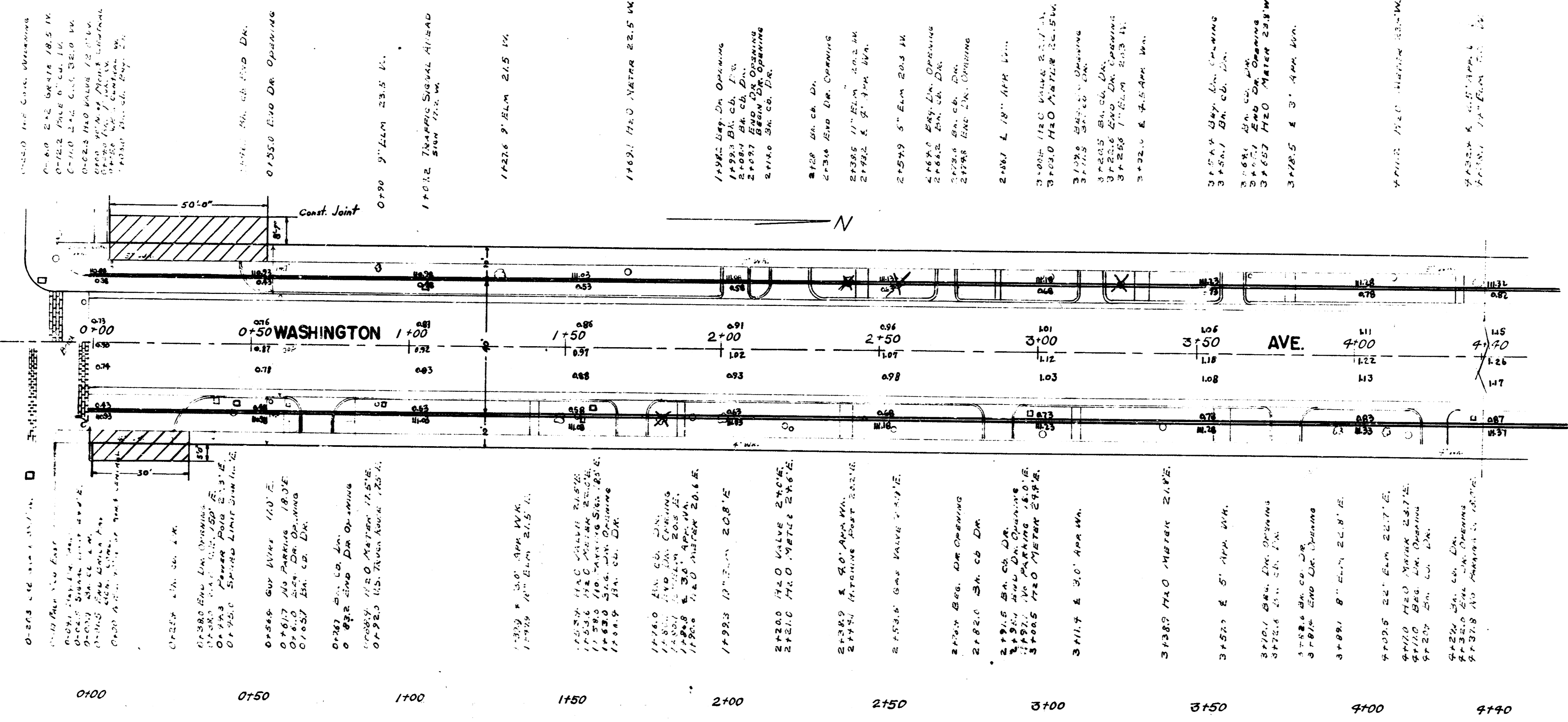


Detail of Contraction Joints
 No Scale

B.M. III.46 Top of SW Bolt Light Pole Base NE Cor. Wash. & Central

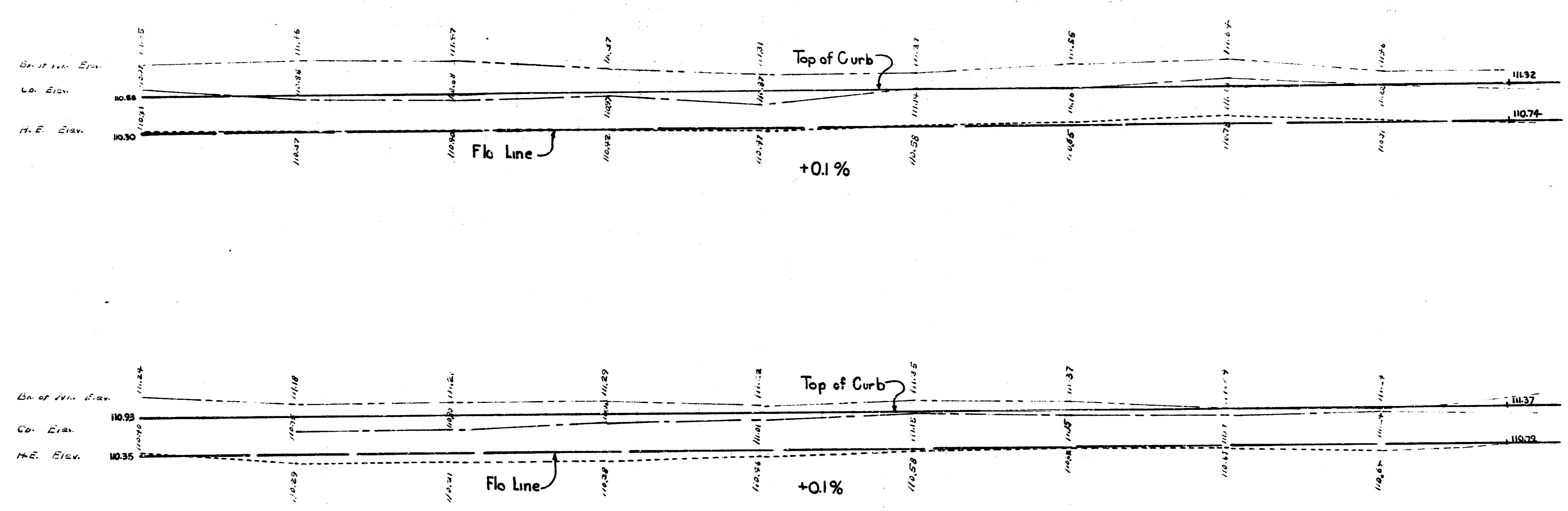
Note: Remove all Conc. Pavement Drive Approach Walks from face of Walk to face of Walk plus all Cross hatched areas as shown. Trees to be removed as shown.

CENTRAL AVE.

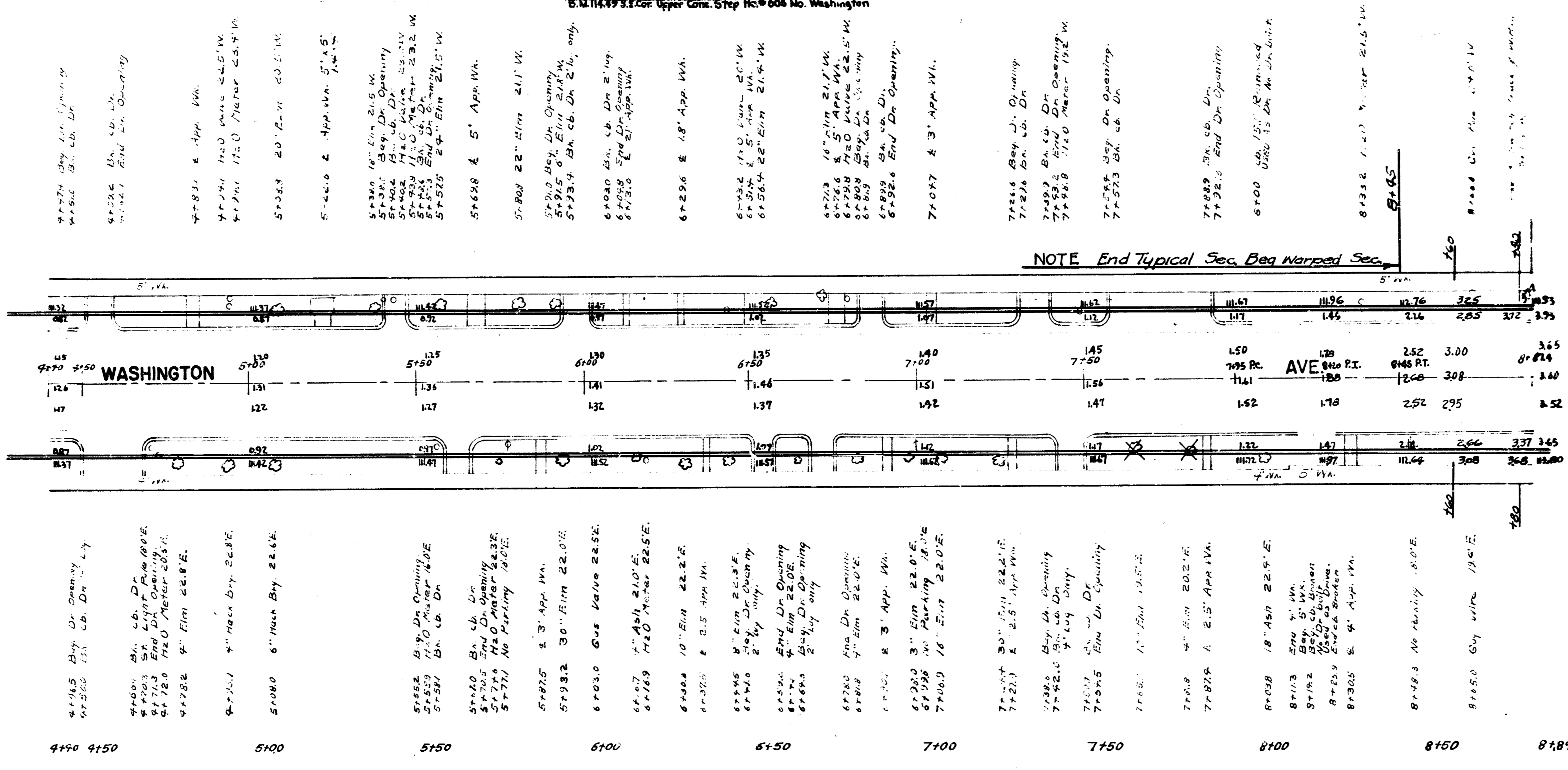


112
W.S. 111
110

112
E.S. 111
110

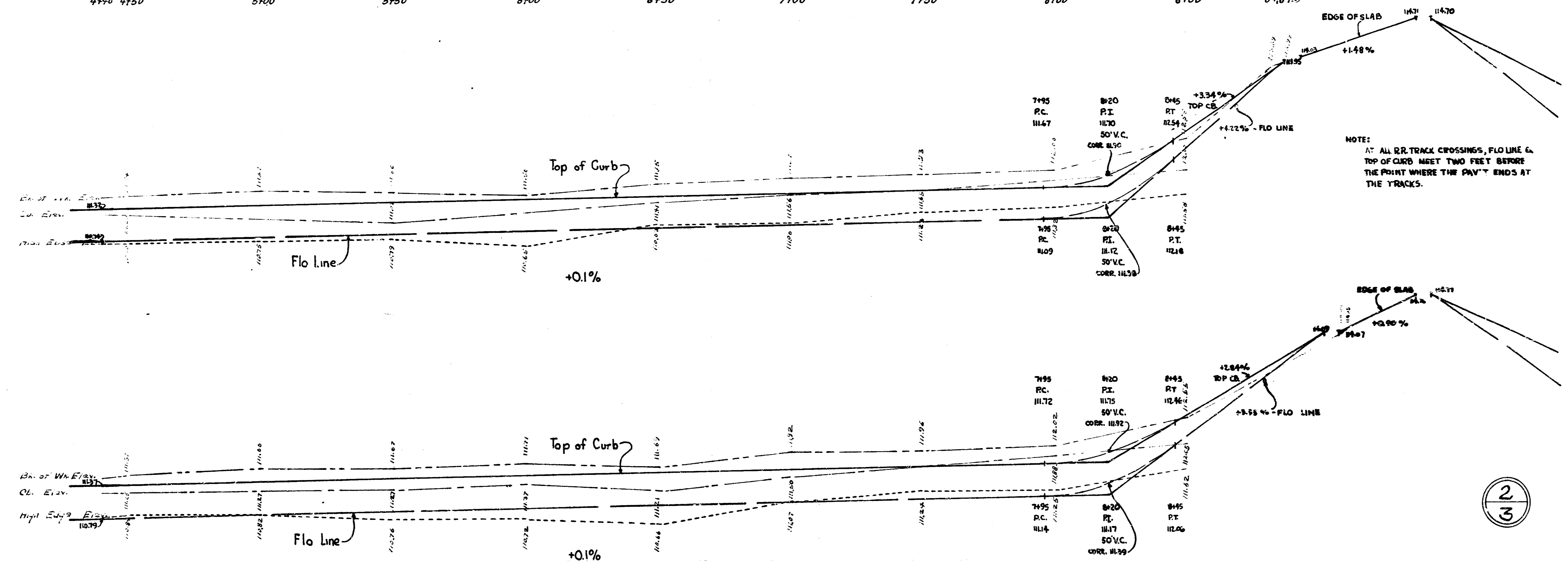


B.M. 114933 Con. Upper Conc. Strip No. 608 No. Washington

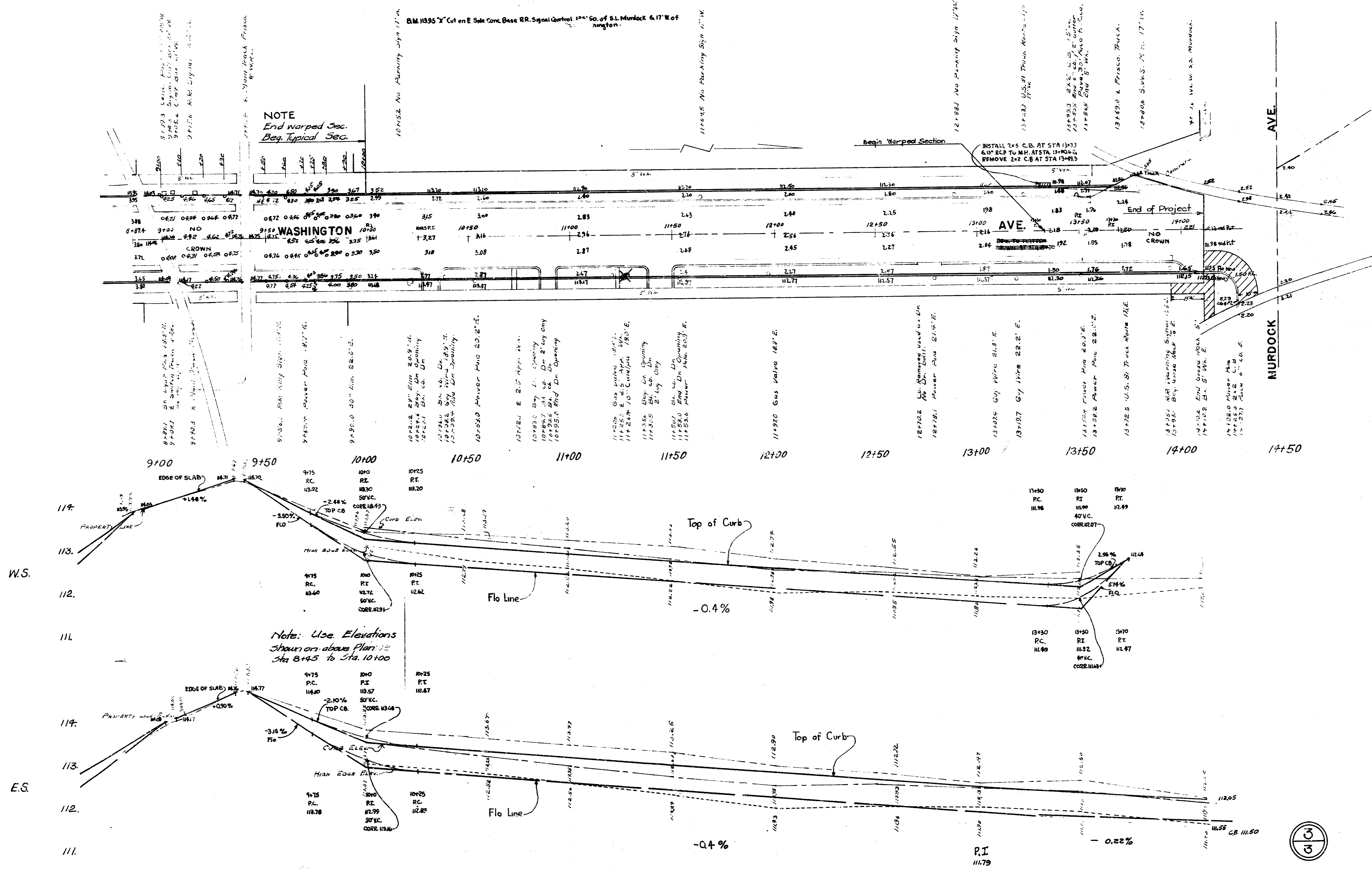


NOTE End Typical Sec. Beg. Warped Sec.

114
W.S.
113
112
111
114
E.S.
113
112
111



NOTE: AT ALL R.R. TRACK CROSSINGS, FLO LINE & TOP OF CURB MEET TWO FEET BEFORE THE POINT WHERE THE PAV'T ENDS AT THE TRACKS.



NOTE
End Warped Sec.
Beg. Typical Sec.

B.M. 1335 'X' Cut on E Side Conc. Base RR. Signal Control 17' S. of S.L. Murdock & 17' W. of Washington.

Begin Warped Section

INSTALL 2x6 C.B. AT STA 13+33
6x6 BCP TO M.H. AT STA 13+04.6
REMOVE 2x2 C.B. AT STA 13+43.5

End of Project

Note: Use Elevations
Shown on above Plan at
Sta 8+45 to Sta 10+00

