

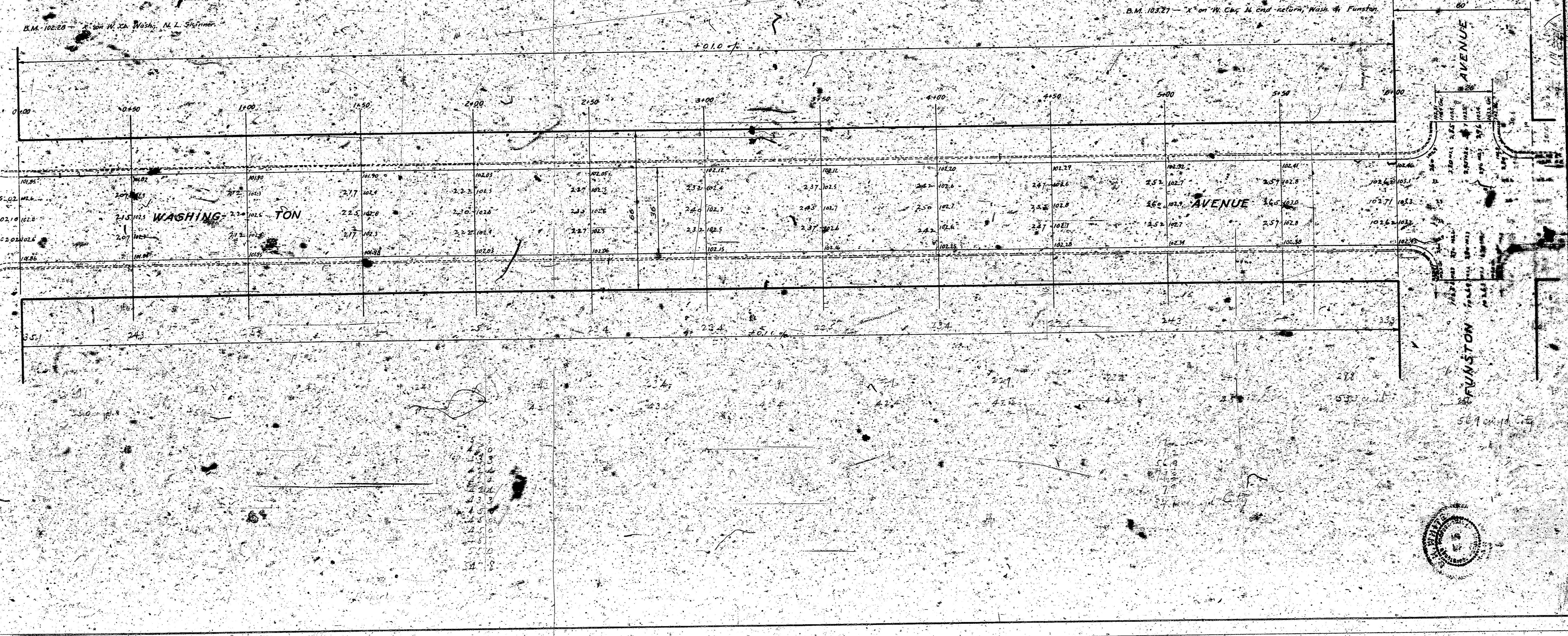
PAVING PLAN 1945  
 WASHINGTON AVENUE N.L. SKINNER AVENUE  
 CONCRETE 36' N.L. FUNSTON AVENUE



B.M. 10280 - 1" on N. of Wash. N.L. Skinner

B.M. 10271 - 1" on N. of N. of Funston, Wash. N. Funston

SKINNER AVENUE



- 1.0
- 2.0
- 3.0
- 4.0
- 5.0
- 6.0
- 7.0
- 8.0
- 9.0
- 10.0
- 11.0
- 12.0
- 13.0
- 14.0
- 15.0
- 16.0
- 17.0
- 18.0
- 19.0
- 20.0
- 21.0
- 22.0
- 23.0
- 24.0
- 25.0
- 26.0
- 27.0
- 28.0
- 29.0
- 30.0
- 31.0
- 32.0
- 33.0
- 34.0
- 35.0
- 36.0
- 37.0
- 38.0
- 39.0
- 40.0
- 41.0
- 42.0
- 43.0
- 44.0
- 45.0
- 46.0
- 47.0
- 48.0
- 49.0
- 50.0
- 51.0
- 52.0
- 53.0
- 54.0
- 55.0
- 56.0
- 57.0
- 58.0
- 59.0
- 60.0
- 61.0
- 62.0
- 63.0
- 64.0
- 65.0
- 66.0
- 67.0
- 68.0
- 69.0
- 70.0
- 71.0
- 72.0
- 73.0
- 74.0
- 75.0
- 76.0
- 77.0
- 78.0
- 79.0
- 80.0
- 81.0
- 82.0
- 83.0
- 84.0
- 85.0
- 86.0
- 87.0
- 88.0
- 89.0
- 90.0
- 91.0
- 92.0
- 93.0
- 94.0
- 95.0
- 96.0
- 97.0
- 98.0
- 99.0
- 100.0

