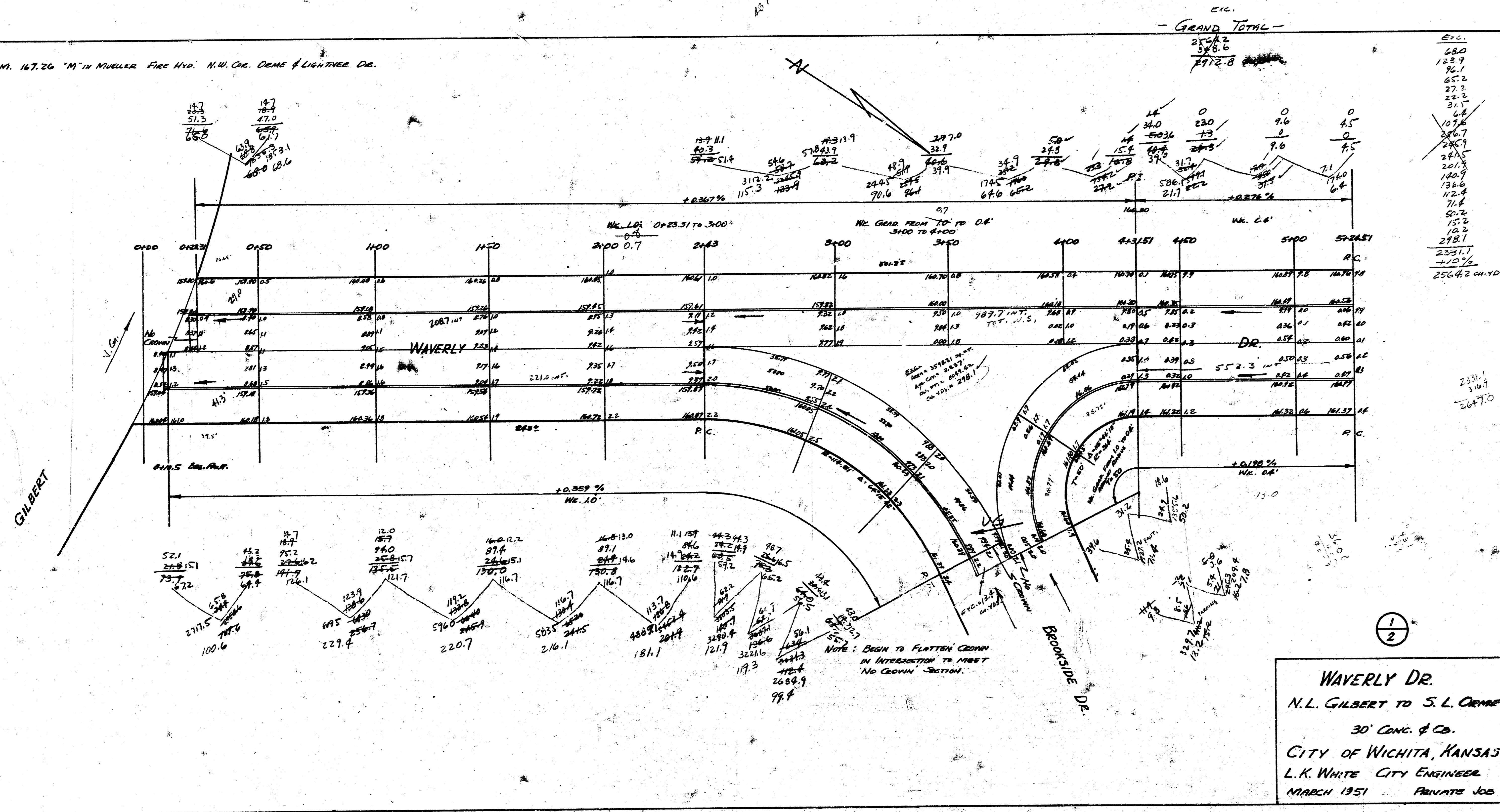
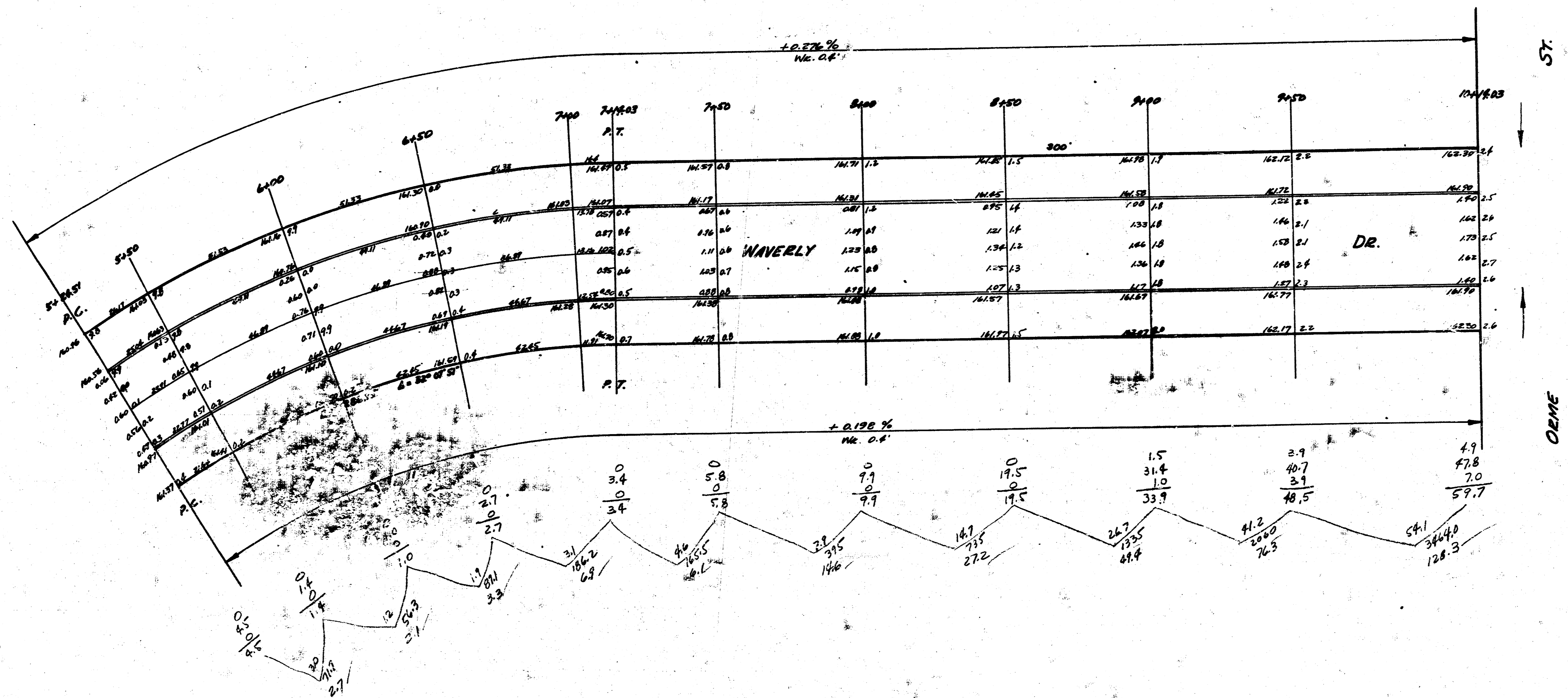
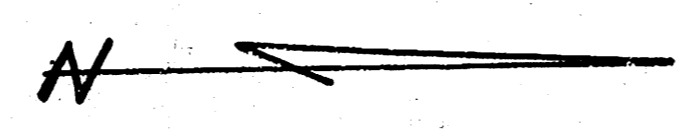


B.M. 167.26 "M" in Mueller Fire Hyd. N.W. Cor. Dene & Lightner Dr.



Waverly Dr.
 N.L. Gilbert to S.L. Dene
 30' CONC. & CO.
 CITY OF WICHITA, KANSAS
 L.K. WHITE CITY ENGINEER
 MARCH 1951 PRIVATE JOB

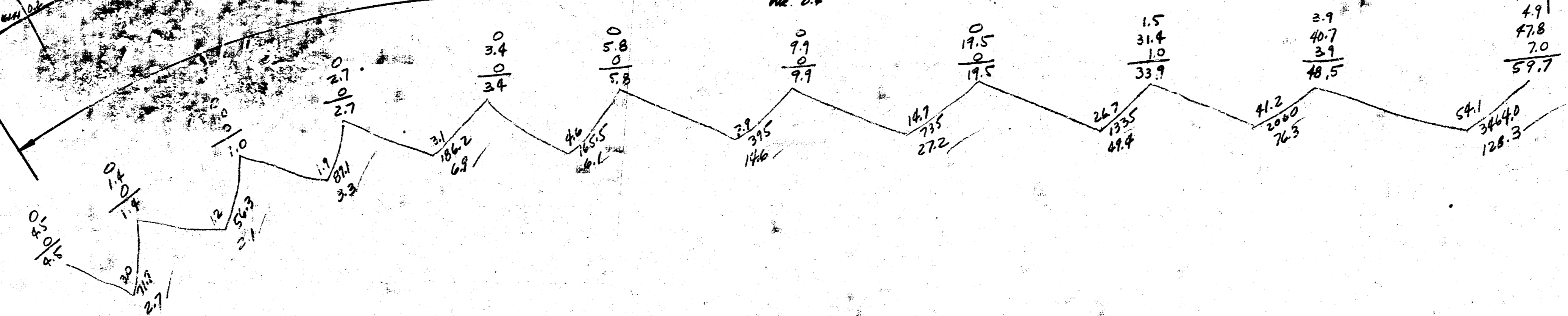
B.M. 167.26 "M" IN MUELLEE FIRE HYD. N.W. COR. CEMETERY & LIGHTHOUSE
 NOTE: STATIONING IS ON C' OFFSET ON P.L.S.



Exc.
 2.7
 2.1
 3.3
 6.1
 15.6
 27.2
 49.4
 74.3
 128.3

 316.7
 +10.6

 327.3 cu. yds.



2
2

4 1 5 50