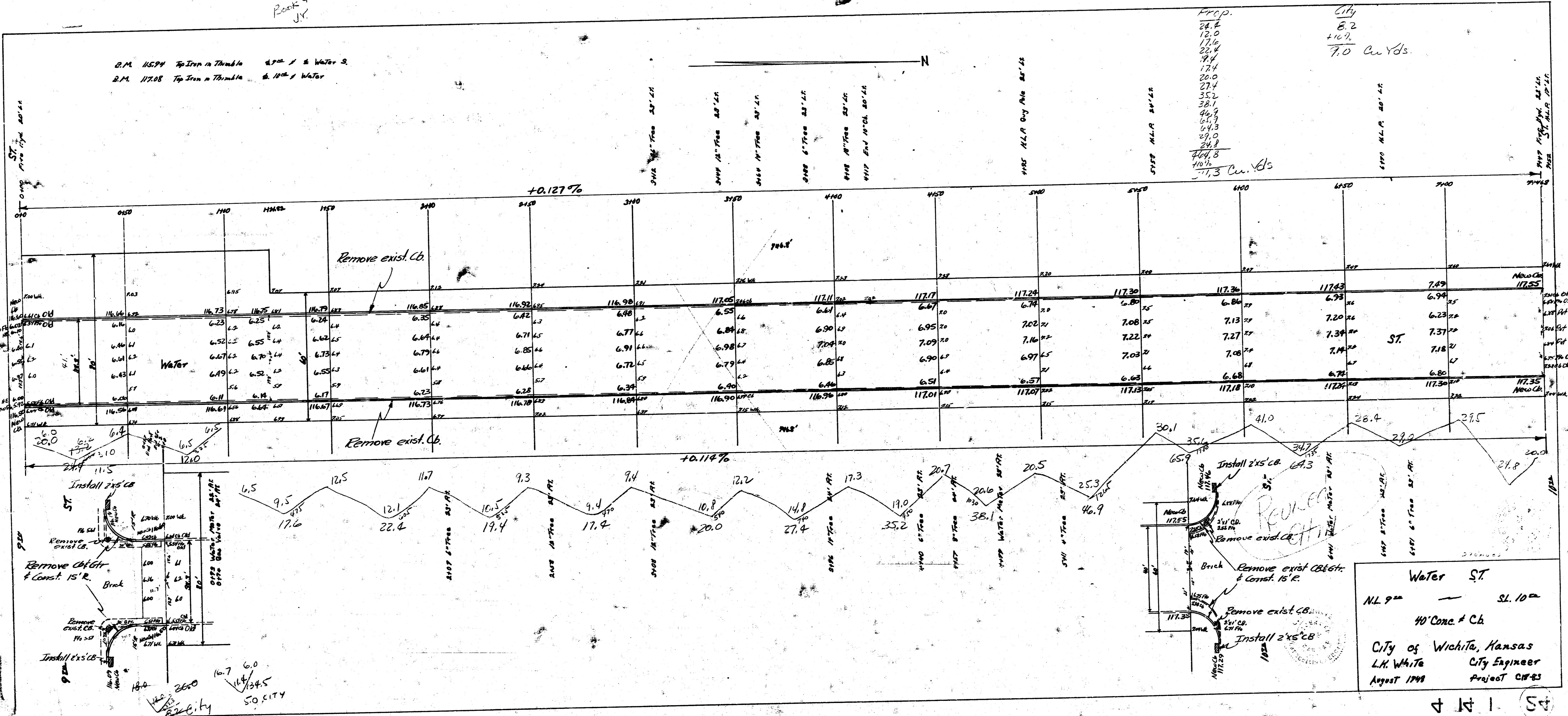


Book 4
J.V.

D.M. 11574 Top Iron in Thumb 1/2" & Water 2"
D.M. 11708 Top Iron in Thumb 1/2" & Water 2"

Prop.	City
28.4	8.2
12.0	+10.2
17.6	
28.4	
4.4	
17.4	
20.0	
27.4	
35.2	
38.1	
46.9	
64.3	
64.3	
24.8	
464.8	
110.6	
71.3 Cu. Yds.	



Water ST
 NL 9" — SL 10"
 40' Conc. Cb.
 City of Wichita, Kansas
 L.H. White City Engineer
 August 1948 Project C1843

4 14 1 (S)