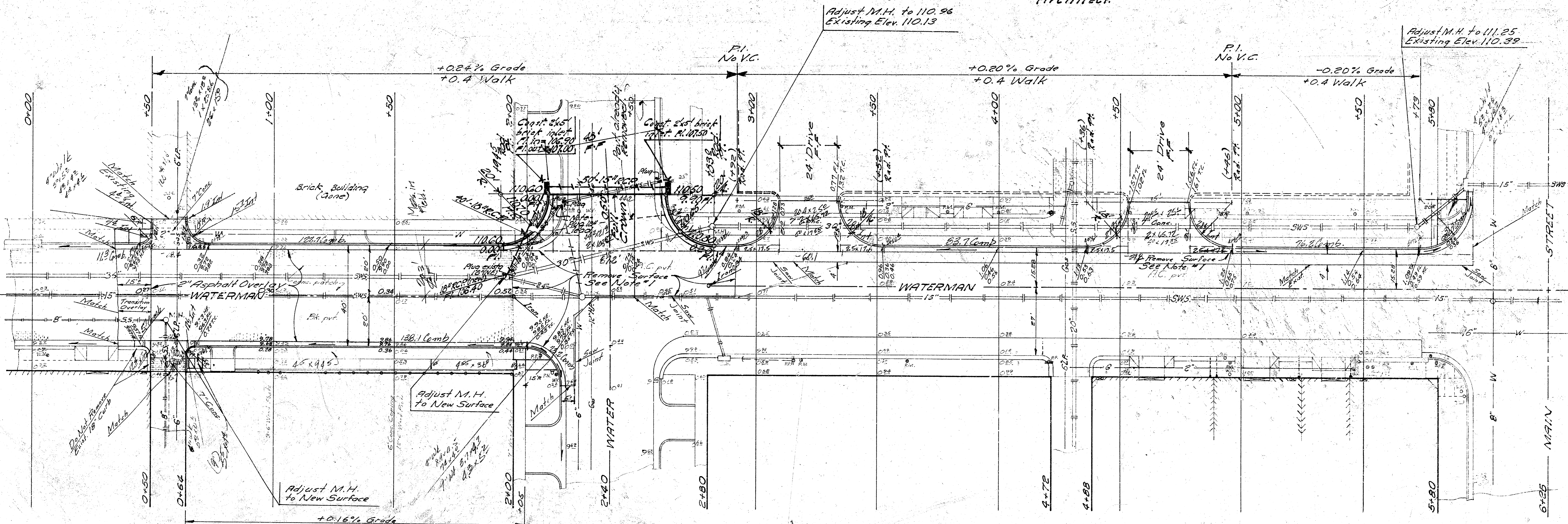


B.M. 111.10 R.R. Spike, S. Side Large Elm Tree,
N.E. cor. Waterman & Water

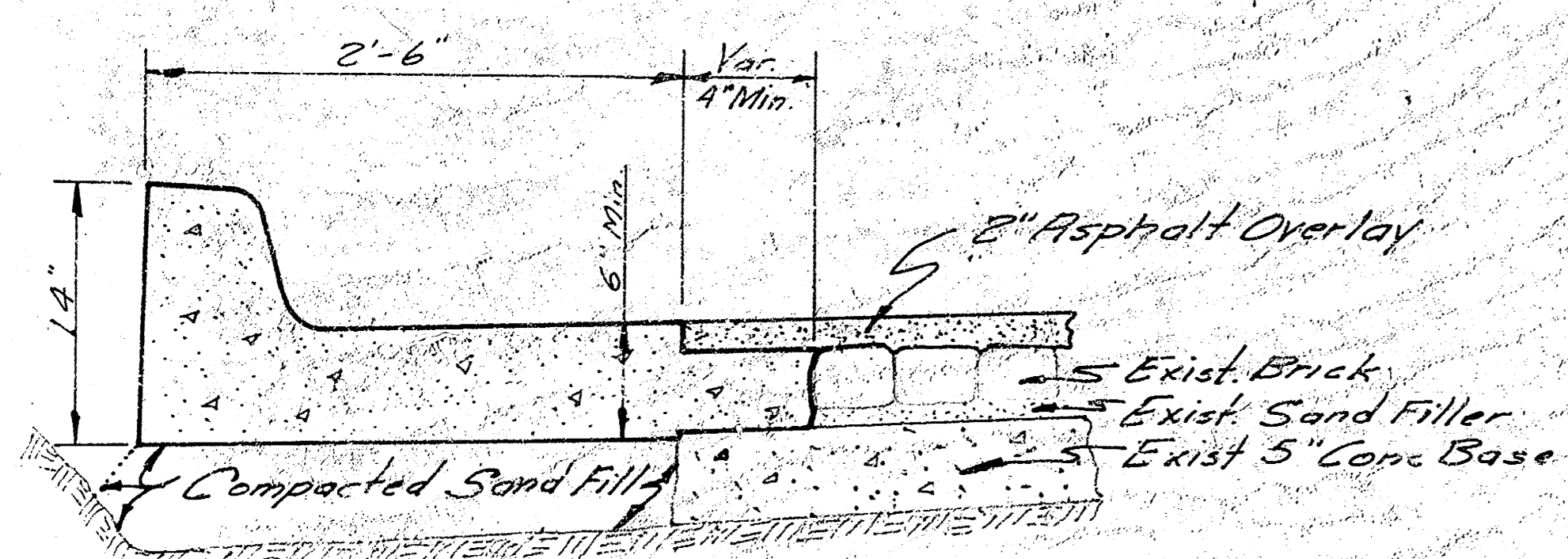
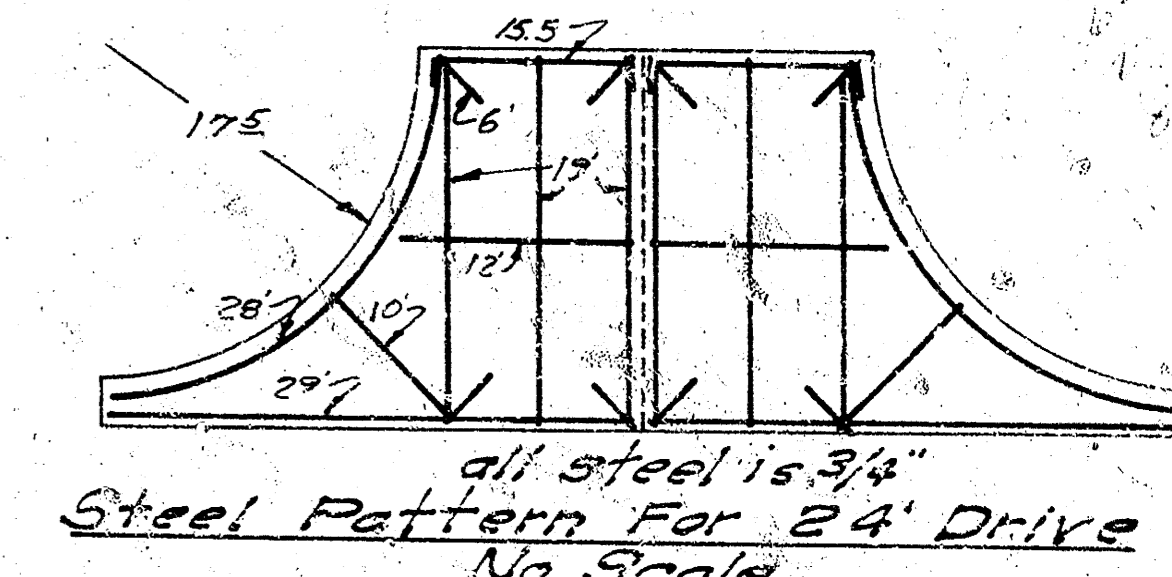
NOTE:
Drive ways are to be located
by the Civic Center Project
Architect.

B.M. 111.74 "a" cut on 13th, cor. Conc. Coping 3' &
3' N. of N.E. cor., Main & Waterman.

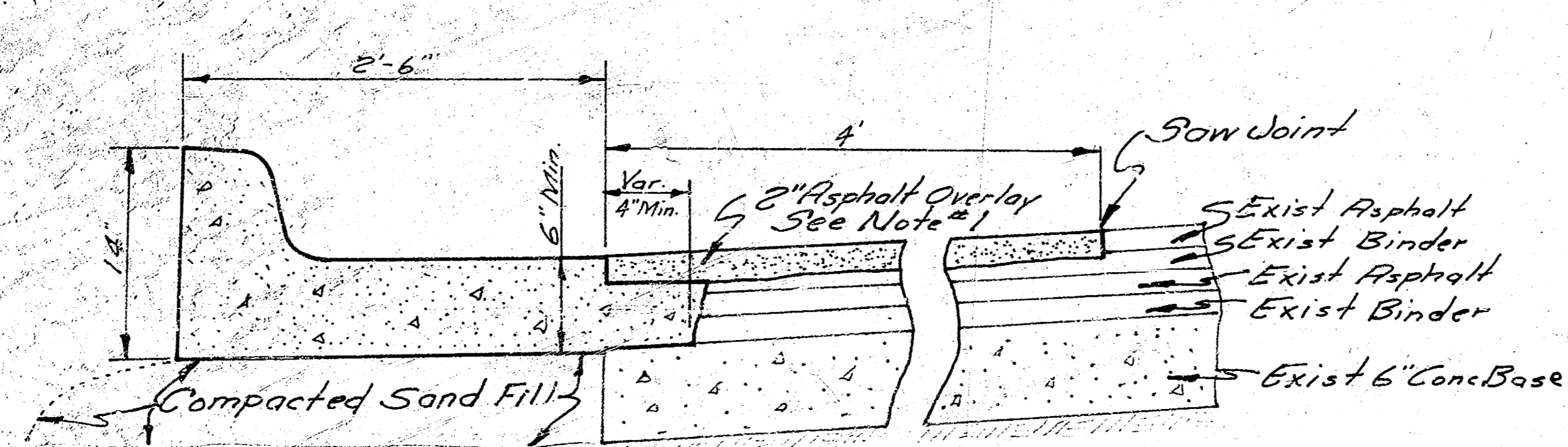


*** NOTES ***

- #1 Sta. 2+00 to Sta. 5+95 Remove Existing Surface as Necessary to Facilitate 2" Asphalt Overlay.
- #2 24' Drives and Alleys are to be 7" Conc. Int. Curb.
- #3 Contractor to include Cost of Extra Conc. in Non-Std. Curb in Bid Price per Lin. Ft. of Non-Standard Curb & Gutter.
- #4 Contractor to Back-fill and Grade Parking. All Earthwork is Incidental to the Project.



Non Standard Combined Curb & Gutter Detail
Sta. 0+35 to Sta. 2+00
No Scale



Non Standard Combined Curb & Gutter Detail
Sta. 2+00 to Sta. 5+95
No Scale

WATERMAN ST.
From 150' W. of W.L. Water St.
To W.L. Main Street
Reconstruct & Improve Surface
B.E. SMITH CITY ENGINEER
CITY OF WICHITA, KANSAS
U.R.A. KANSAS R-19
URA Kans R-19 Sept