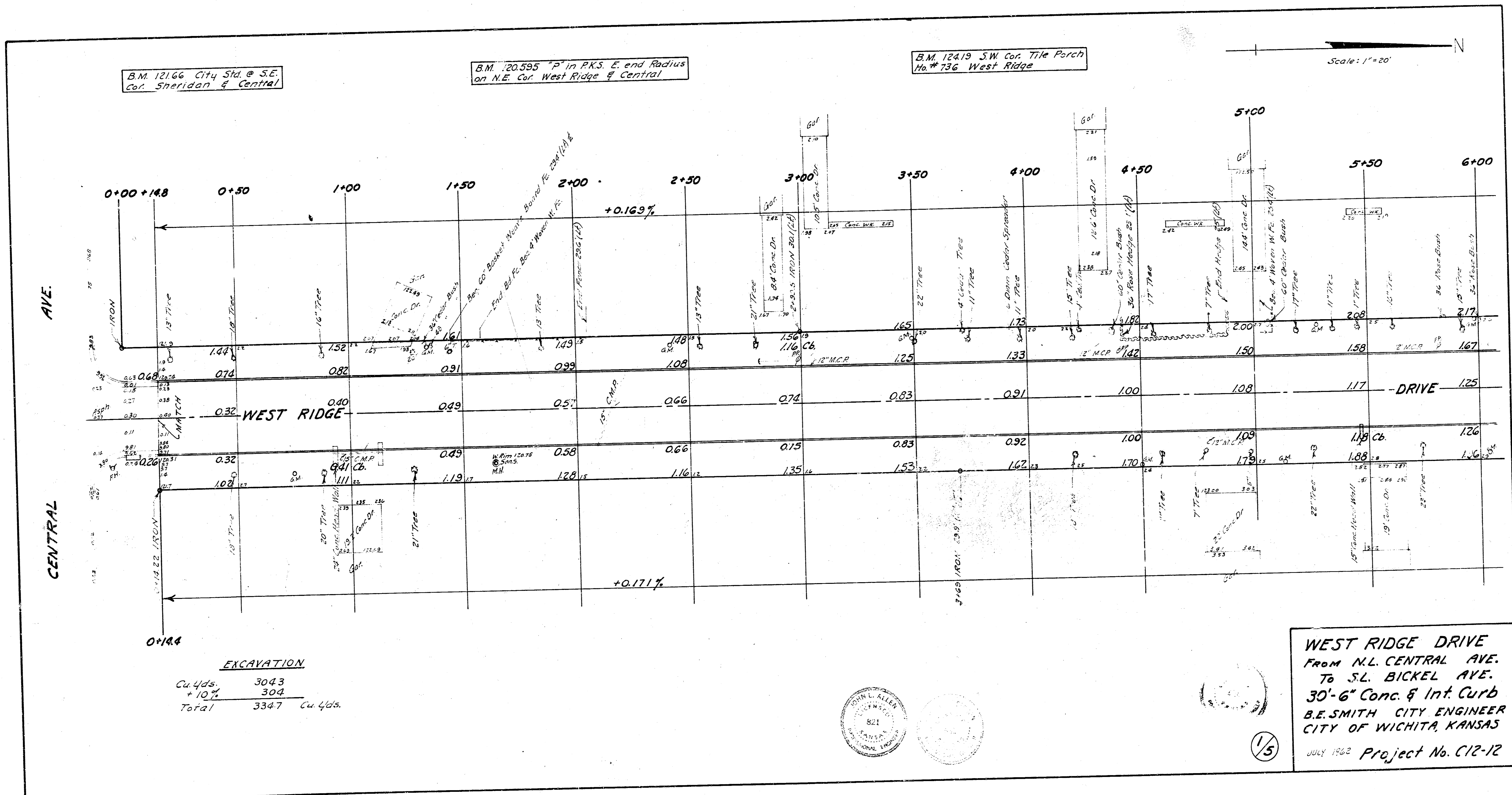


B.M. 12166 City Sta. @ S.E. Cor. Sheridan & Central

B.M. 120595 "P" in P.K.S. E. end Radius on N.E. Cor. West Ridge & Central

B.M. 12419 S.W. Cor. Tile Porch No. # 736 West Ridge

Scale: 1"=20'

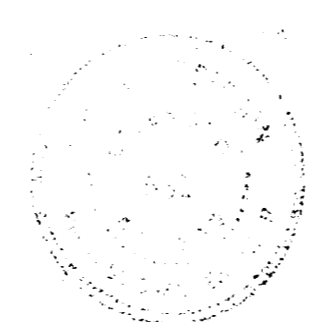


Sheet 4 of 5

EXCAVATION

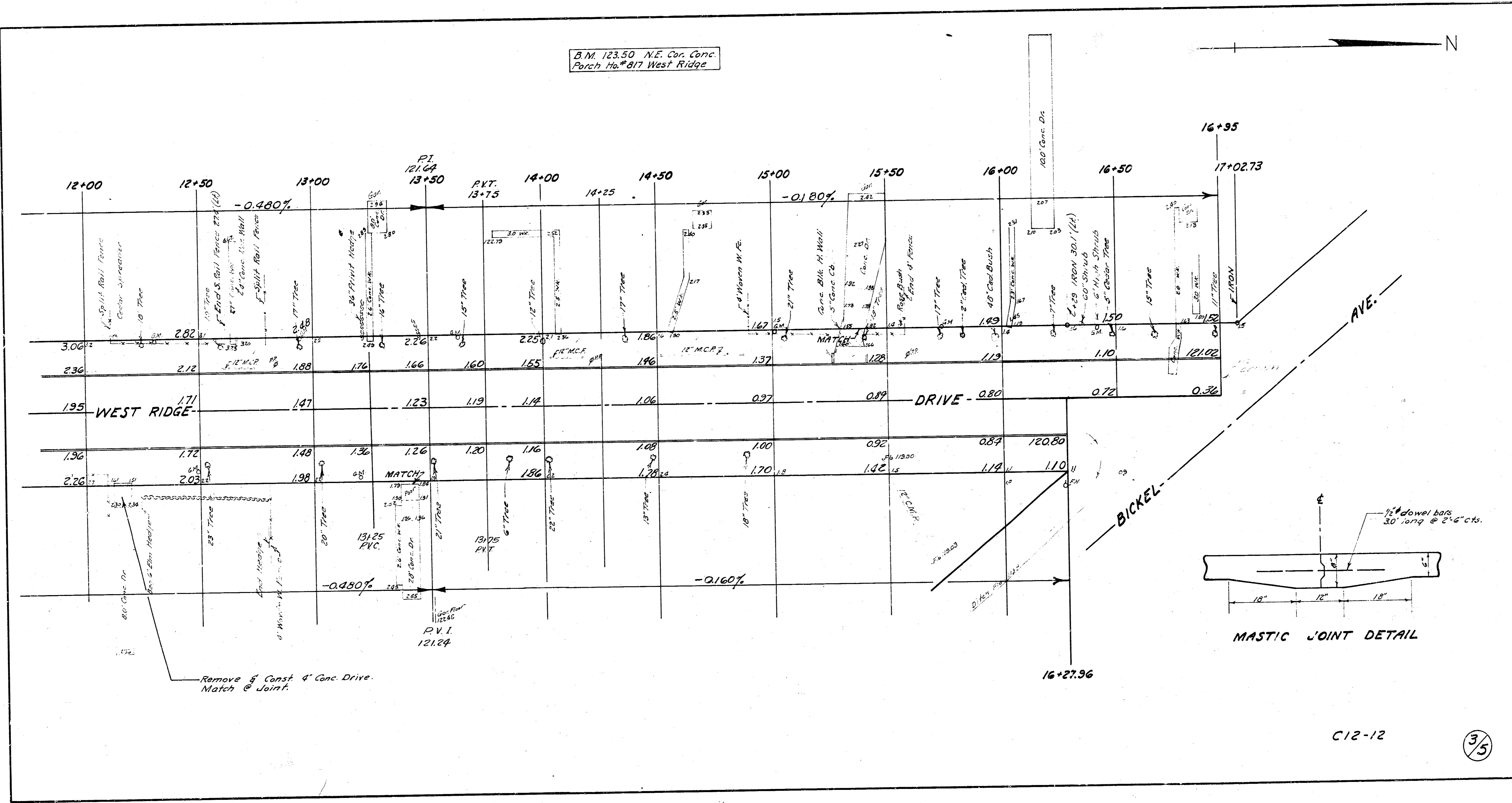
Cu Yds.	3043
+ 10%	304
Total	3347 Cu Yds.

WEST RIDGE DRIVE
 From N.L. CENTRAL AVE.
 To S.L. BICKEL AVE.
 30'-6" Conc. & Int. Curb
 B.E. SMITH CITY ENGINEER
 CITY OF WICHITA, KANSAS
 JULY 1962 Project No. C12-12



15

B.M. 123.50 N.E. Cor. Conc. Porch No. 817 West Ridge

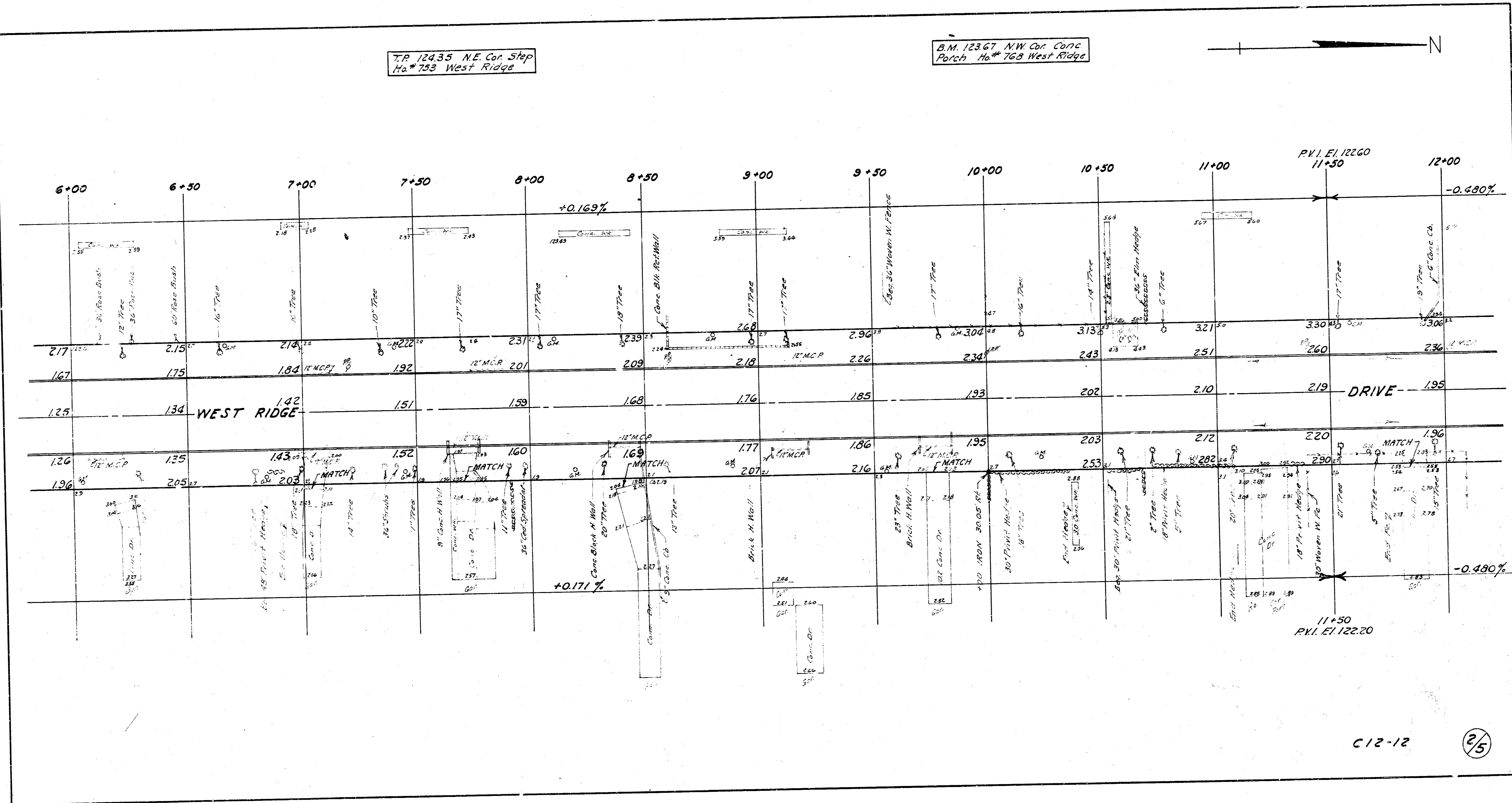


C12-12

3/5

T.P. 124.35 N.E. Cor. Step
Ht. # 753 West Ridge

B.M. 123.67 N.W. Cor. Conc
Porch Ht. # 768 West Ridge



C12-12

25