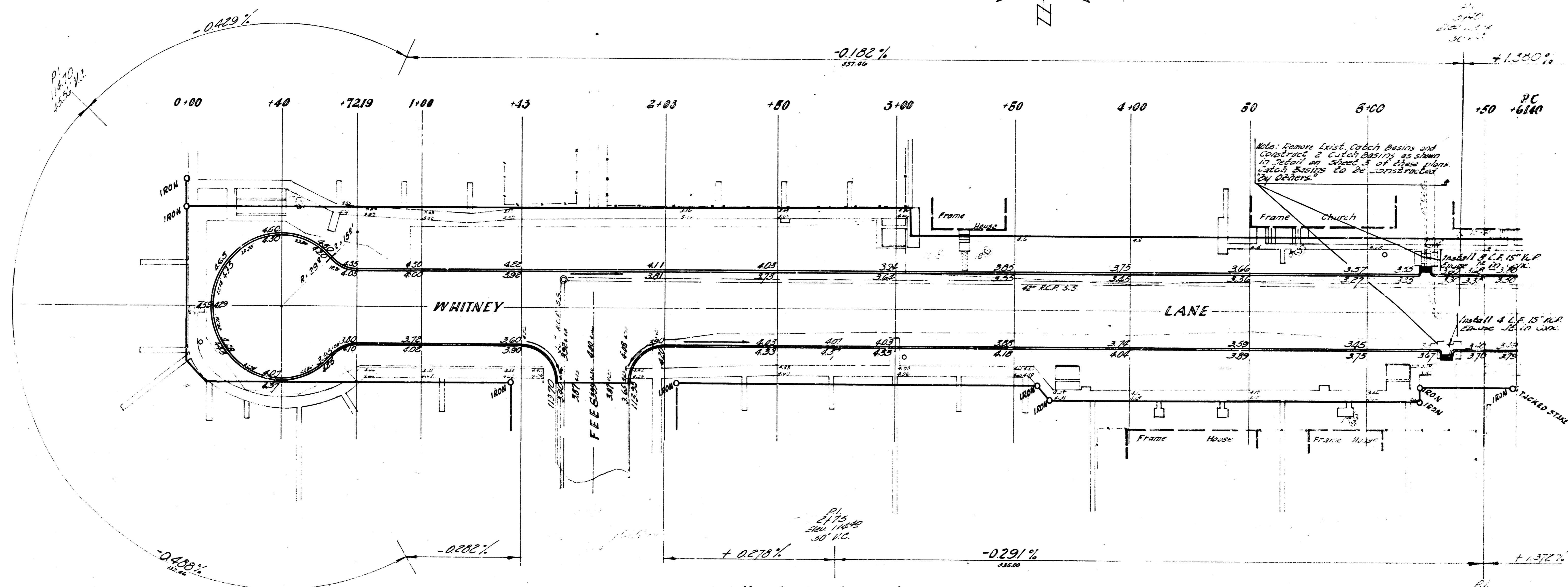
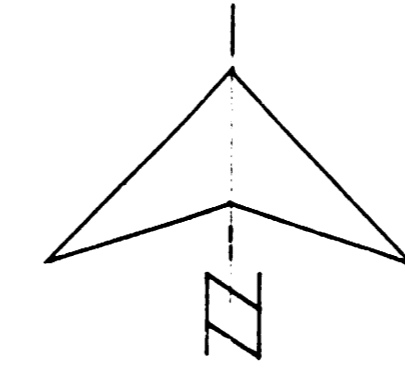


B.M. 116.27 S.E. Cor. Conc. Pav. E. Side, Ho # 3981 Whitney Ln.
 B.M. 121.51 S.W. Cor. Conc. Pav. Ho # 4510 Ross Parkway



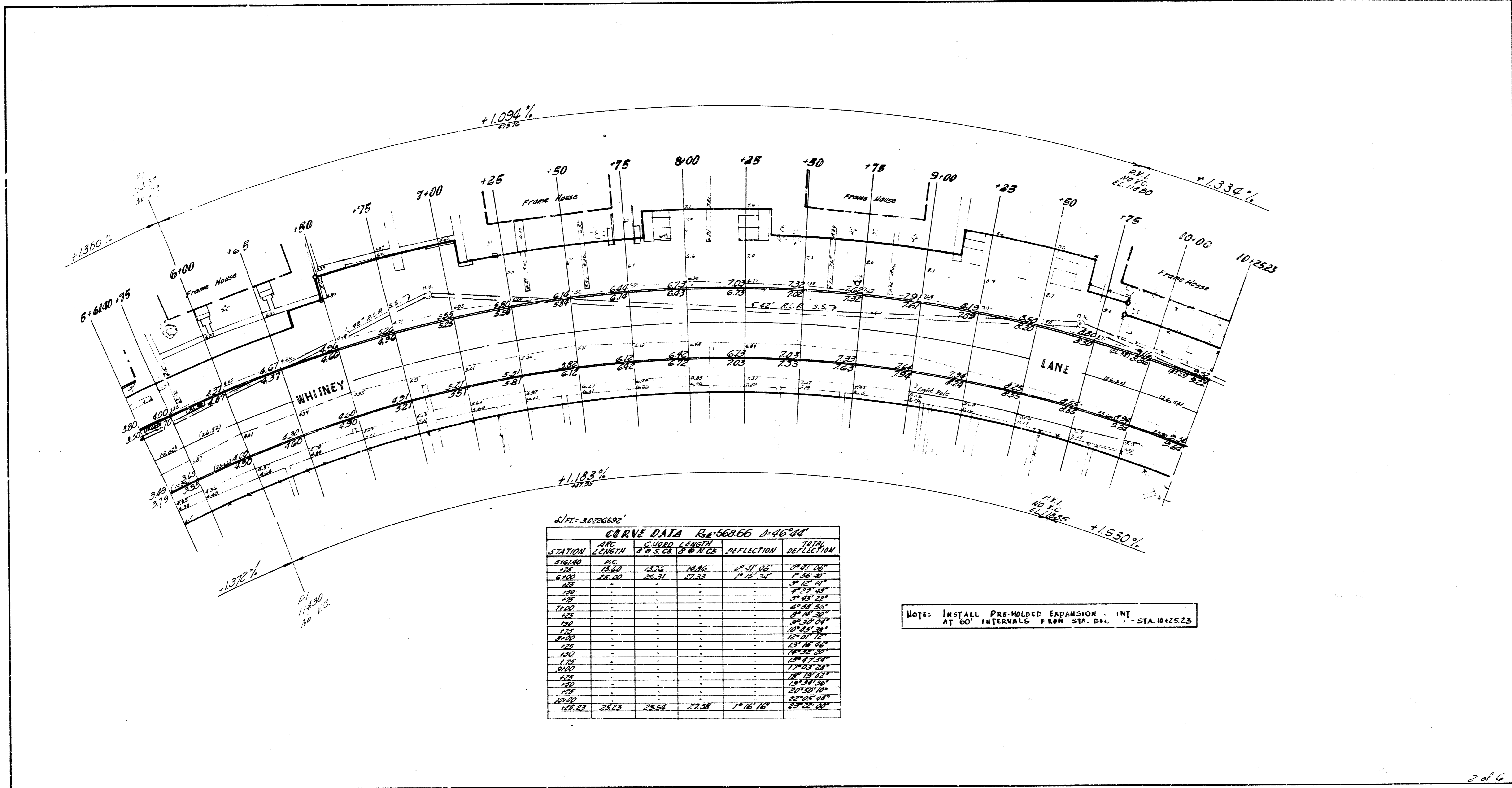
Survey
 Plan
 1000
 1000
 D. E. SMITH

Asphalt Surface to be disposed of within the Planter Area
 in accordance with instructions of the Superintendent of
 Street Maintenance.

NOTE: Std. & Mastic Joint to be used Entire length of Project.



WHITNEY LANE
 N.E. ROSS PARKWAY TO E. END
 CUL-DE-SAC IN BLK 75, PLANNED SUB. NO. 1
 30' CONC. & CURB
 CITY OF WICHITA, KANS.
 B. E. SMITH CITY ENGINEER
 DATE APRIL 1961 PROJ. NO. C-19-25

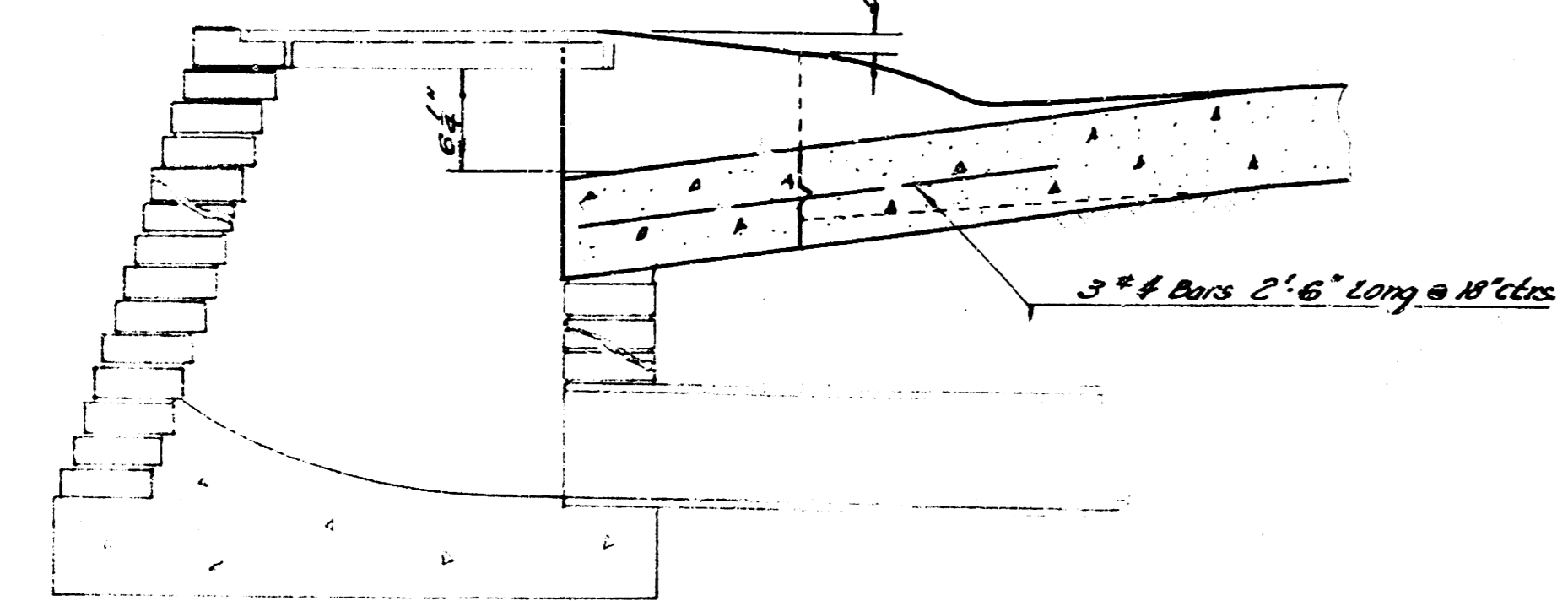
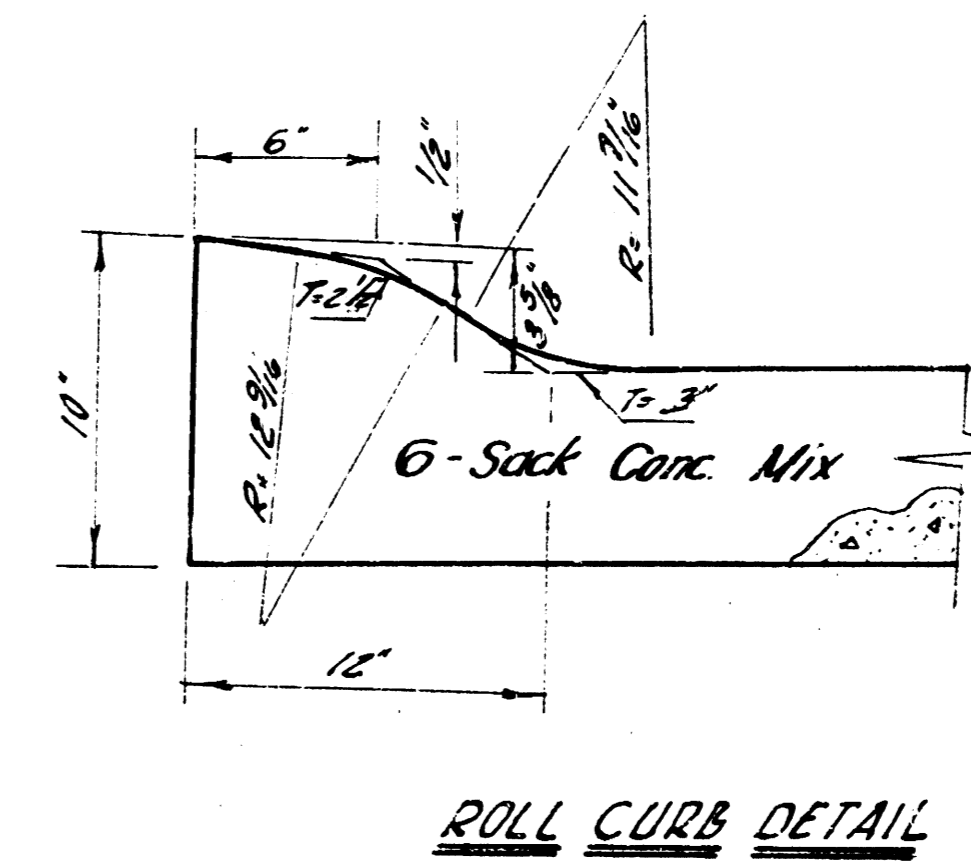
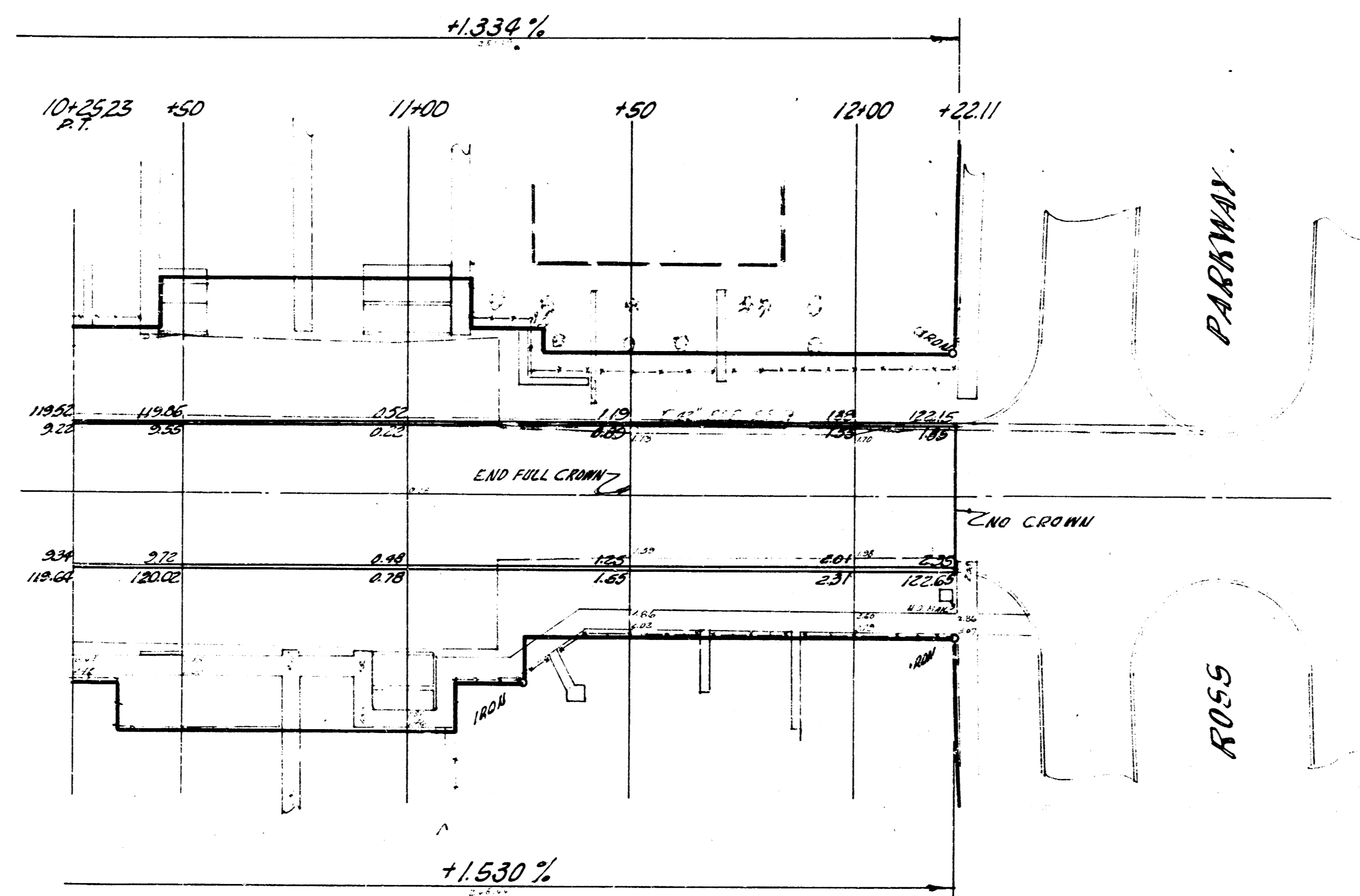
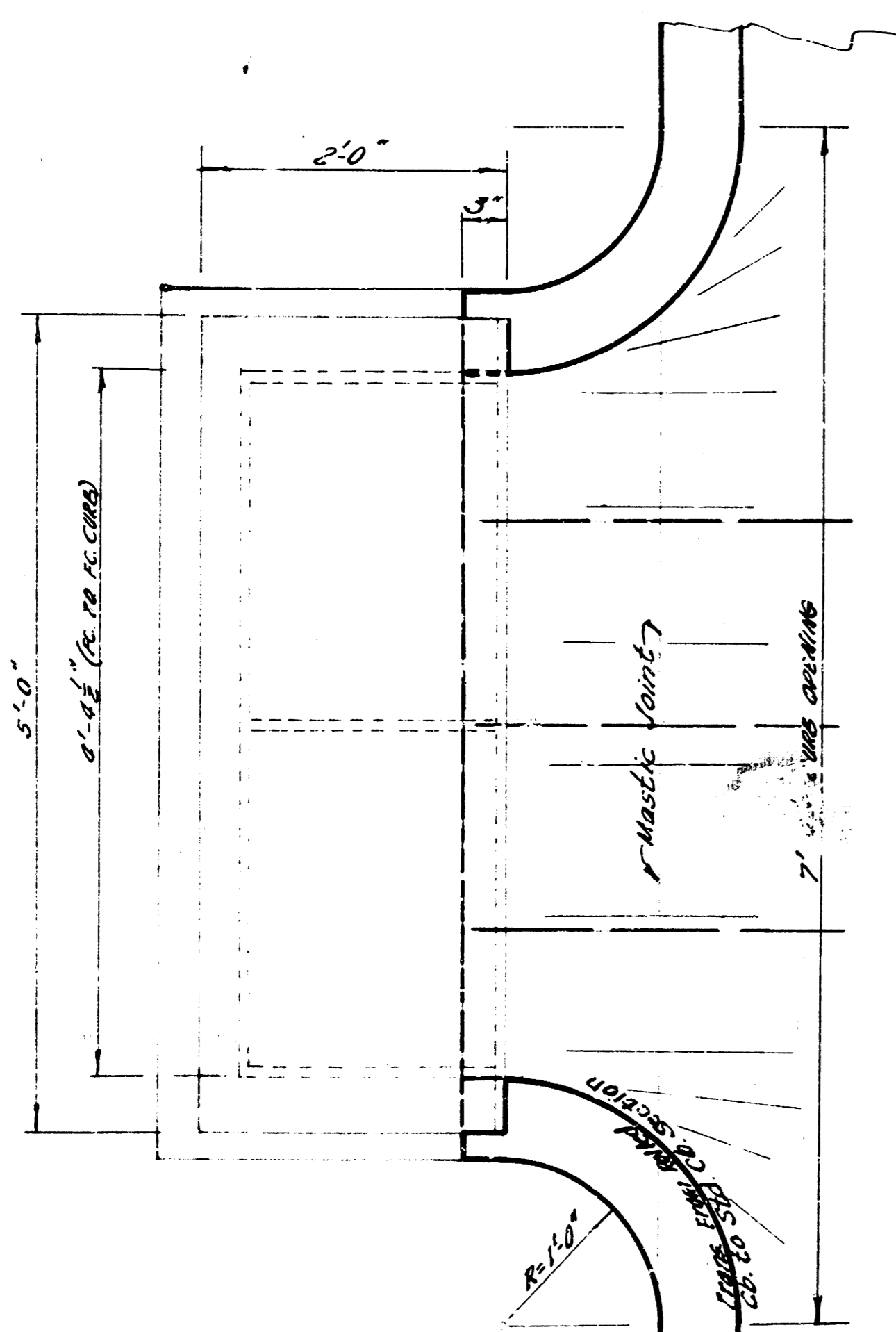


2/11-30226692

CURVE DATA $R=56366$ $D=46'00"$

STATION	ARC LENGTH	CHORD LENGTH	CHORD BEARING	DEFLECTION	TOTAL DEFLECTION
5+61.40	0.00	0.00	0° 00' 00"	0° 00' 00"	0° 00' 00"
5+60	15.00	15.00	10.26°	10.26°	10.26°
6+00	25.00	25.31	21.32°	17.18°	27.44°
6+30	30.00	30.00	30.00°	21.74°	49.18°
6+60	35.00	34.20	37.37°	24.37°	73.55°
7+00	40.00	38.57	43.71°	25.64°	99.19°
7+30	45.00	43.00	49.00°	25.64°	125.00°
7+60	50.00	47.57	53.27°	24.37°	151.63°
8+00	55.00	52.00	56.54°	21.74°	179.37°
8+30	60.00	56.43	58.81°	17.18°	196.55°
8+60	65.00	60.86	59.26°	10.26°	206.81°
9+00	70.00	65.29	57.99°	0.00°	210.00°
9+30	75.00	69.72	55.00°	0.00°	206.81°
9+60	80.00	74.15	49.00°	0.00°	196.55°
10+00	85.00	78.58	40.00°	0.00°	179.37°
10+25.25	89.85	83.01	21.32°	0.00°	151.63°
10+25	89.85	83.01	21.32°	0.00°	125.00°
10+25.25	89.85	83.01	21.32°	0.00°	99.18°
10+25.25	89.85	83.01	21.32°	0.00°	73.55°
10+25.25	89.85	83.01	21.32°	0.00°	49.18°
10+25.25	89.85	83.01	21.32°	0.00°	27.44°
10+25.25	89.85	83.01	21.32°	0.00°	10.26°
10+25.25	89.85	83.01	21.32°	0.00°	0.00°

NOTE: INSTALL PRE-MOLDED EXPANSION INT AT 60' INTERVALS FROM STA. 6+00 TO STA. 10+25.25



CATCH BASIN DETAILS