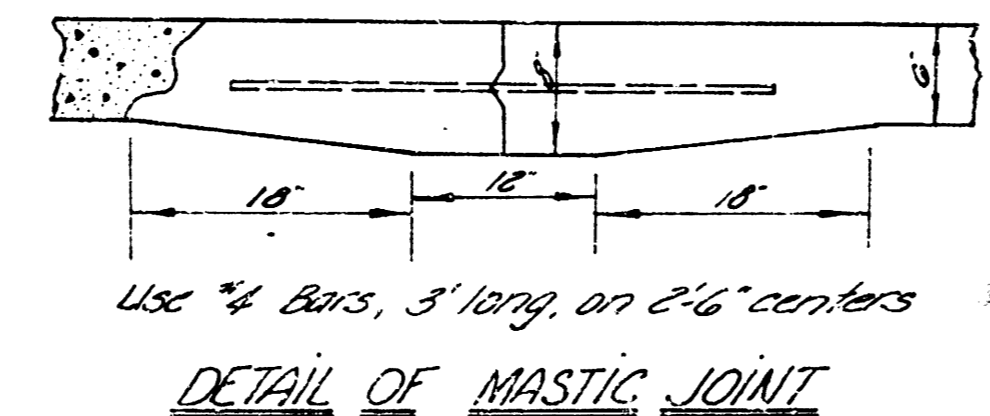
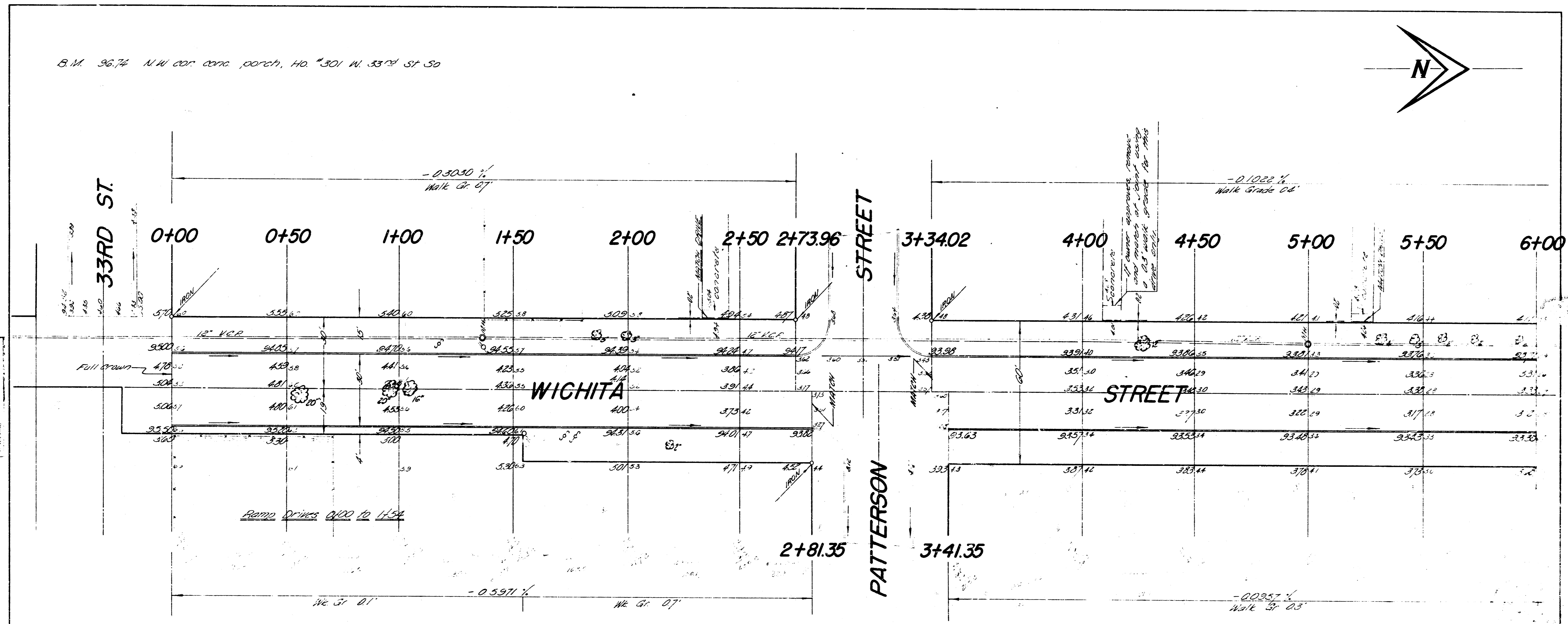
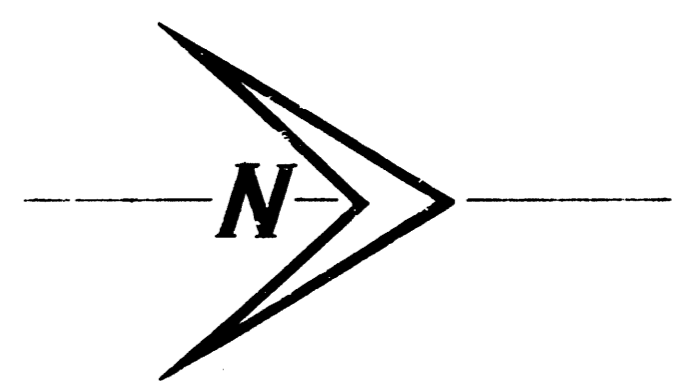


B.M. 96.74 N.W. cor. conc. porch, Ho. 301 N. 33rd St. 50



	ELEVATION	CONC. P.L.
Propo	94.32	1.91
	54.3	1.9
	103.75 cu yd	2.3 cu yd
	16.6	4.9
	1.7	0.2
City	18.3 cu yd	5.4 cu yd

**WICHITA**  
 N.L. 33RD ST TO S.L. 31ST  
**30' CONC. & CB**  
 CITY OF WICHITA, KANSAS  
 B. E. SMITH CITY ENGINEER  
 DATE: Aug. 1961 PROJ. NO. C15-29

