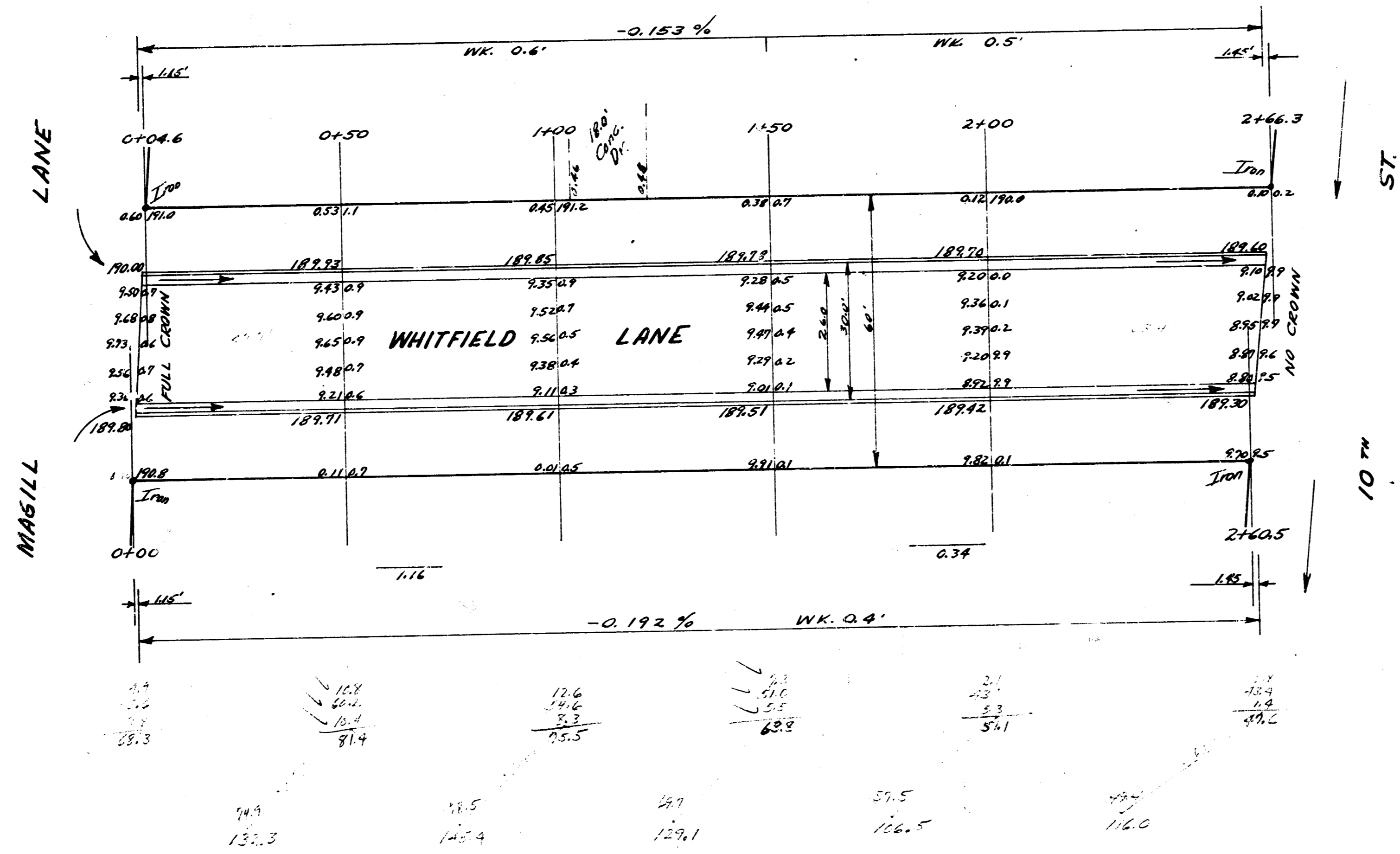
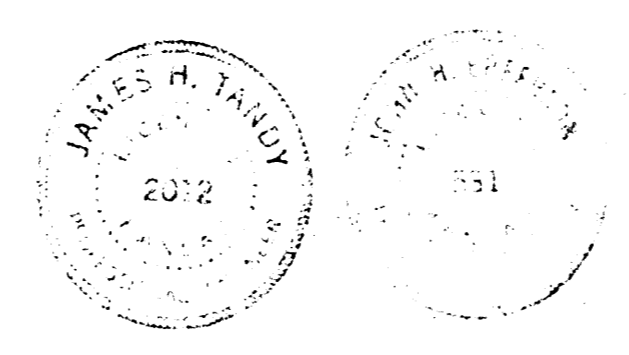


B.M. 187.55 "R" IN RITCHIE S.W. MAGILL & E. CURB OF WHITFIELD
 STATIONING & BASE LINE ON EAST PROP. LINE.
 B.M. 197.30 STANDARD @ 9" x 10" WOODLAWN



11/10/58
 SECTION

WHITFIELD LANE
 NL. MAGILL TO SL. 10TH
 26-2-30-AC.
 CITY OF WICHITA KAN.
 B.E. SMITH CITY ENGINEER
 APRIL 1958 PROJ. NO. C18-15



P.L.
 0295
 100
 100