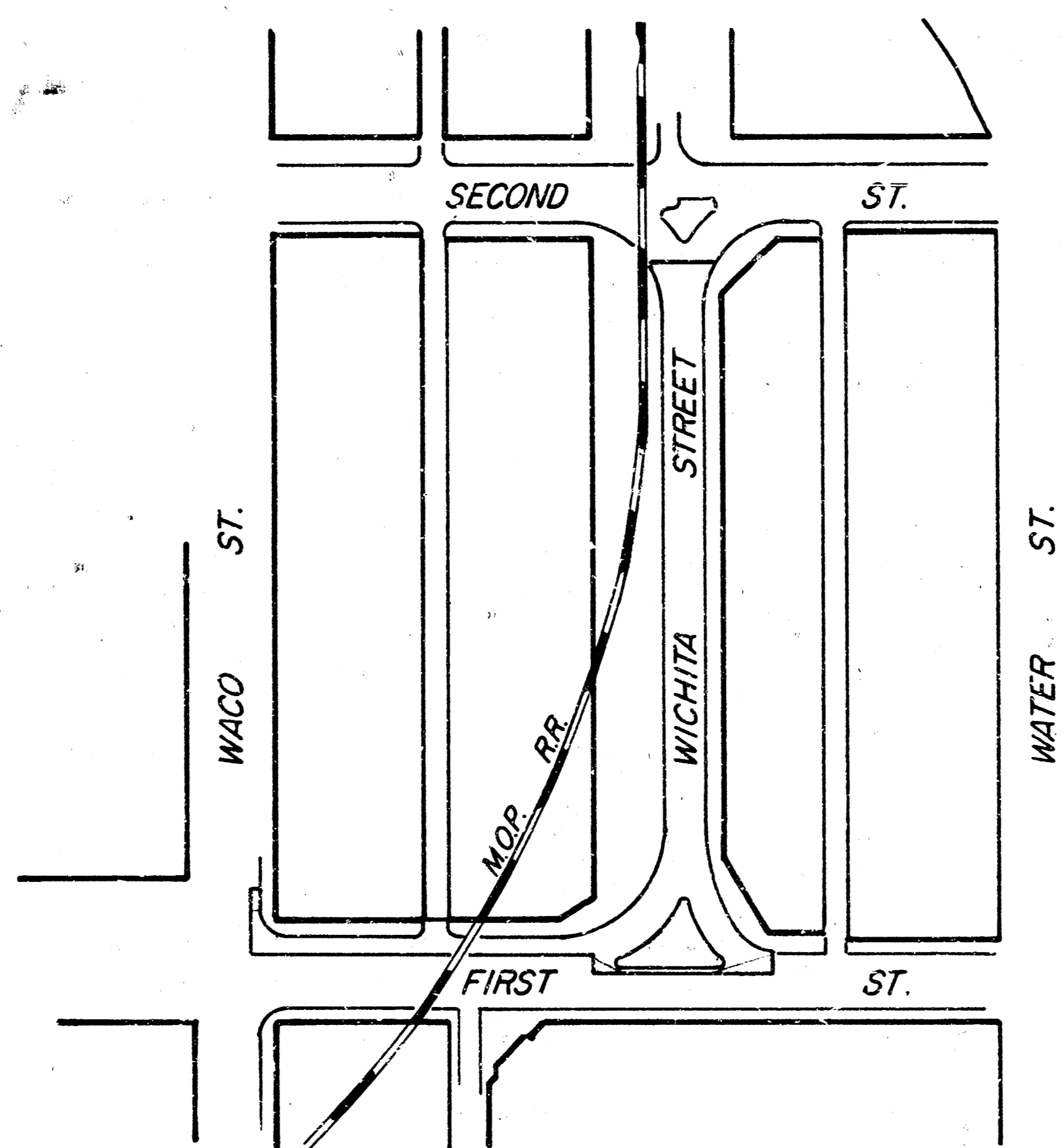


IMPROVING & REIMPROVING
WICHITA STREET
FROM 1ST ST. TO 2ND ST.
PROJECT NO. WNK503430
CITY of WICHITA
R. W. LINN CITY ENGINEER



SCALE
1" = 150'

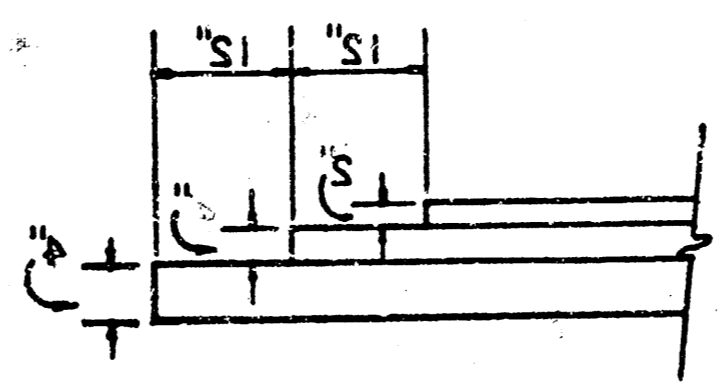


INDEX

| <u>Pg.</u> | |
|------------|-------------------|
| 1 | - Title Sheet |
| 2 | - Typical Section |
| 3-5 | - Paving Plans |
| 6-8 | - Cross-Sections |

CITY OF WICHITA, KANSAS
 DEPARTMENT of PUBLIC WORKS - Engineering
 Division
 R. W. LINN
 CITY ENGINEER
 DATE _____
 Proj. No. _____

TRANSVERSE CONSTRUCTION JOINTS SHALL BE CONSTRUCTED IN FLEXIBLE BASE PAVEMENTS AT LOCATIONS WHERE PAVEMENT TEMPORARILY ENDS TO FACILITATE FUTURE PAVEMENT CONSTRUCTION AS SHOWN BY DETAIL. THE COST OF CONSTRUCTING THE TRANSVERSE CONSTRUCTION JOINTS SHALL NOT BE MEASURED OR PAID FOR DIRECTLY BUT SHALL BE INCLUDED IN THE BID PRICE FOR SQUARE YARDS OF ASPHALTIC CONCRETE PAVEMENT.

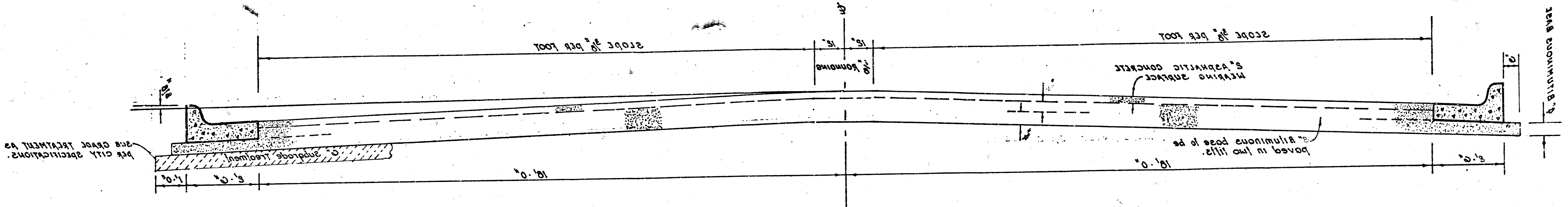


DETAIL OF TRANSVERSE CONSTRUCTION JOINTS

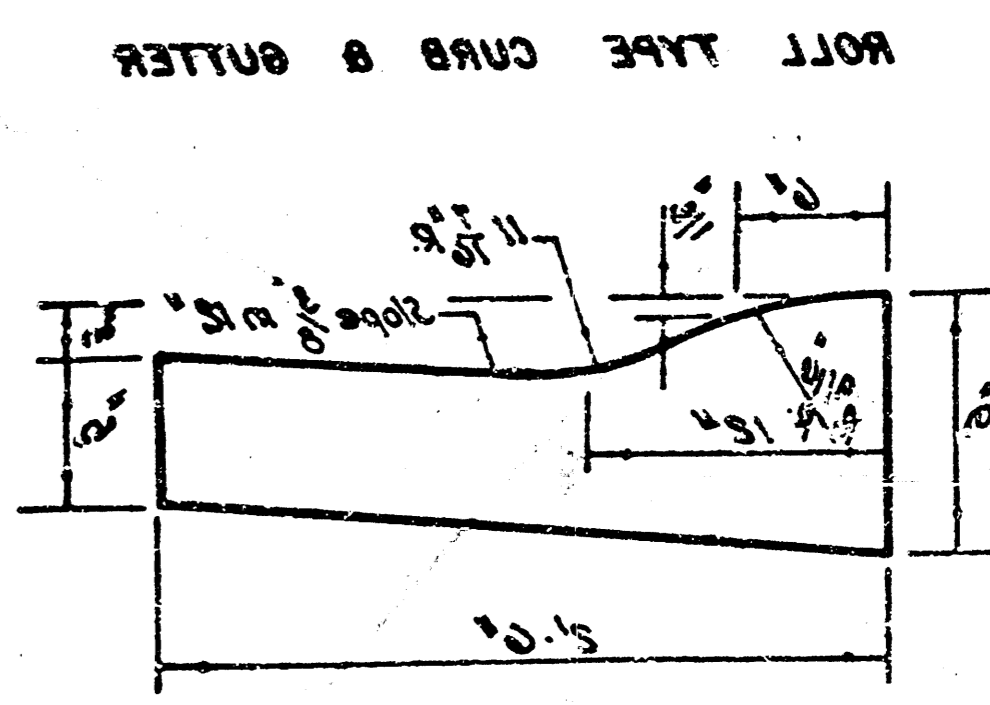
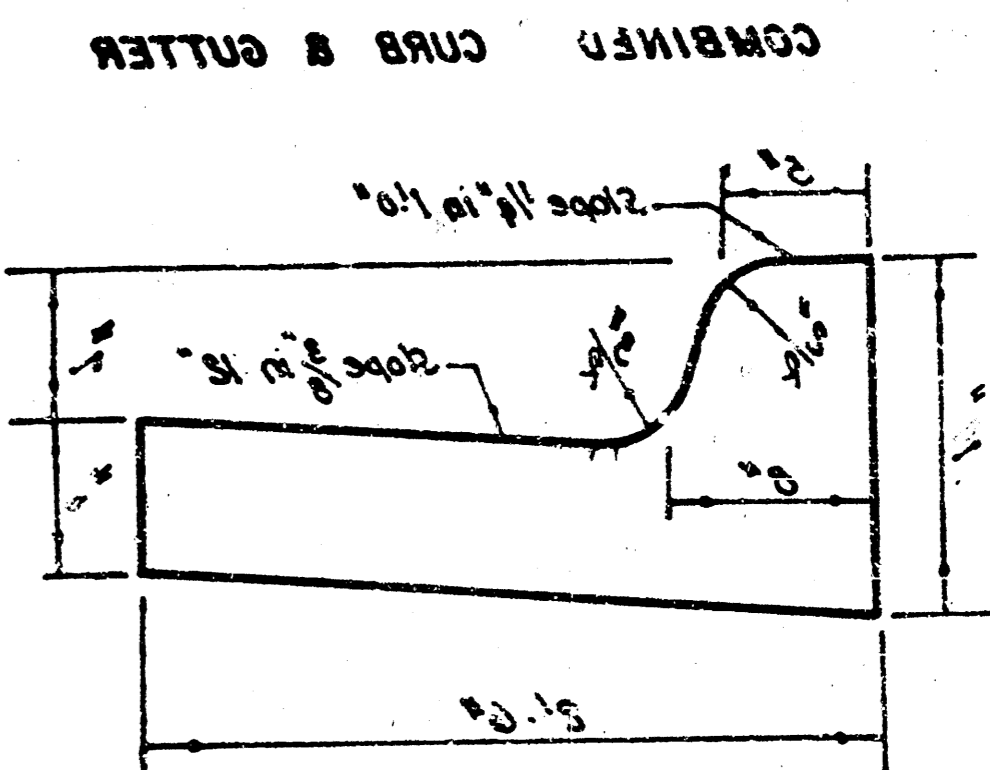
CONSTRUCTED ON THE PAVEMENT CENTERLINE IN THE TOP LIFT. BE STAGGERED A MINIMUM DISTANCE OF 1' WITH JOINTS IN PRECEDING LIFTS AND SUCH THAT A JOINT WILL BE HAVING AUTOMATIC ELECTRONIC CONTROLS FOR CROWN AND GRADE. CONSTRUCTION JOINTS IN EACH LIFT SHALL BE PLACED WITH A LAYDOWN MACHINE BITUMINOUS BASE AND ASPHALTIC CONCRETE WEARING SURFACE SHALL BE PLACED AS SUBSIDIARY TO PRICE BID FOR ASPHALTIC PAVEMENT. BE PAID FOR DIRECTLY AND SHALL BE CONSIDERED AS SUBSIDIARY TO PRICE BID FOR ASPHALTIC PAVEMENT. PER 20 YD BETWEEN LIFTS OF ASPHALTIC MATERIALS WHEN ORDERED BY THE ENGINEER. TACK COAT WILL NOT A TACK COAT OF EMULSIFIED ASPHALT (22-1H) SHALL BE APPLIED AT AN APPROXIMATE RATE 0.05 GALLONS

41' ASPHALTIC CONCRETE PAVEMENT WITH BITUMINOUS BASE

TYPICAL SECTION



The A.C. pavement between the comp curb & gutter shall be paid as 20 yds. of A.C. pavement (2\"/>

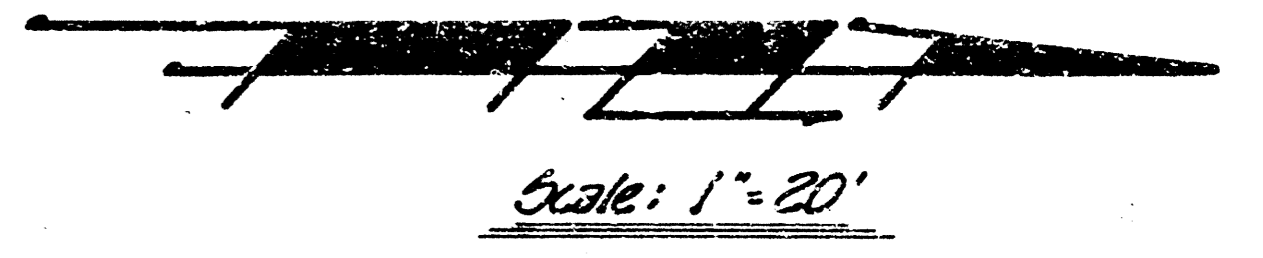
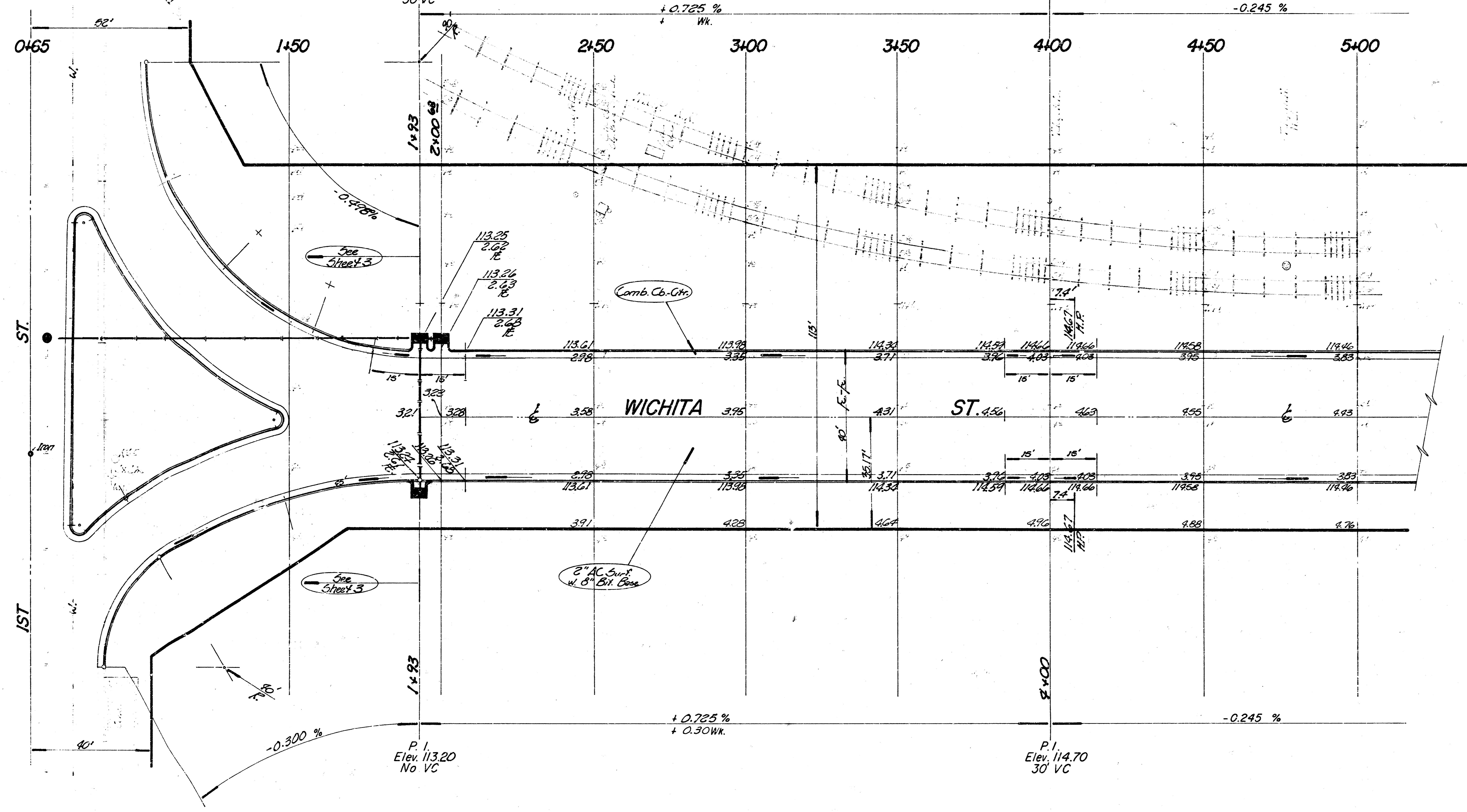


B.M. 115.87' "a" in Conc. N.E. Cor. Floor to Entrance, Garvey Center Garage.
 B.M. 112.79' "a" S-R. Wk. Sl. End St. E.L. Alley W. of Water St.
 N.W. Cor. Bldg. 205th W. End St.

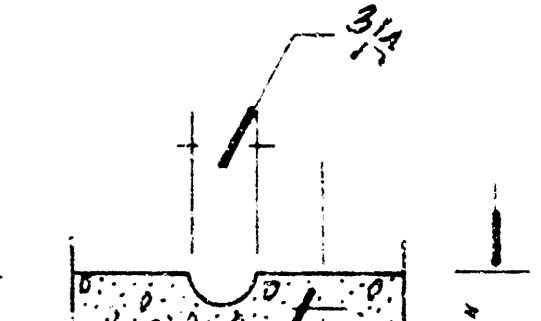
Baseline is 2' 30" R.W.

P.I.
 Elev. 113.20
 30' VC

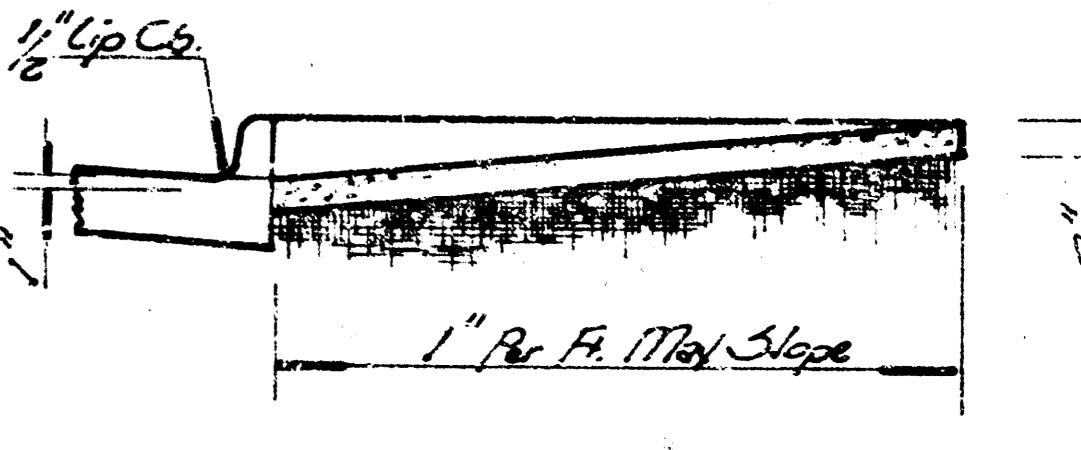
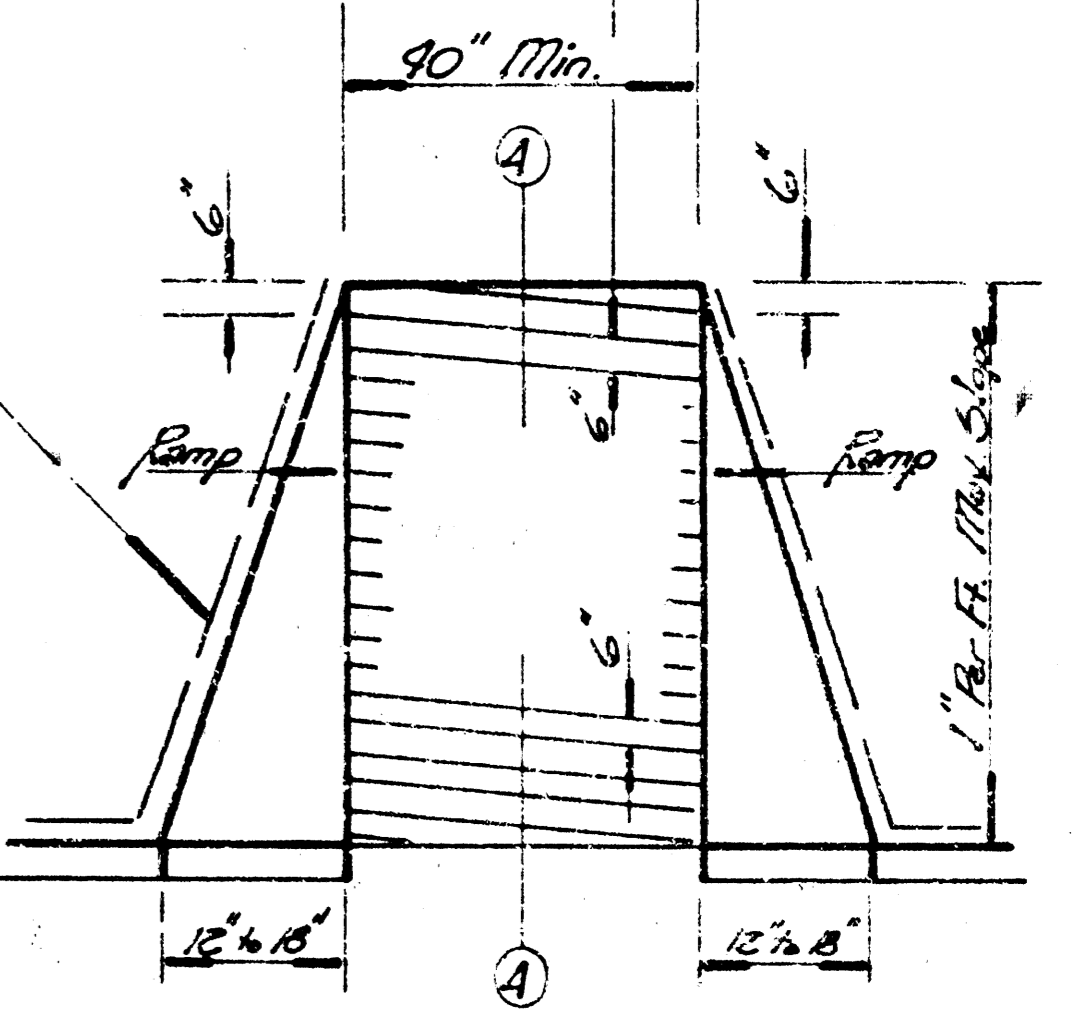
P.I.
 Elev. 114.70
 30' VC



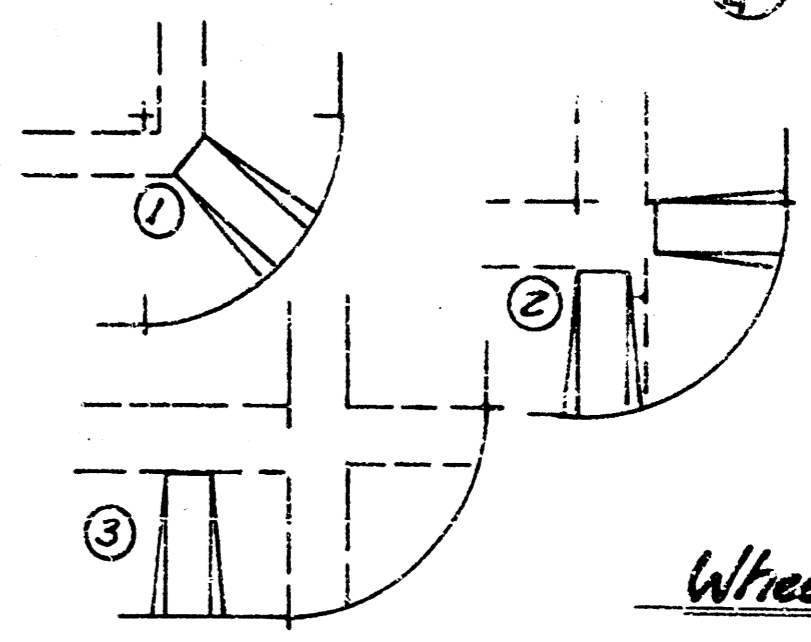
THE RAMP SHALL BE BORDERED ON BOTH SIDES AND THE CURB LINED WITH A FOUR-INCH WIDE YELLOW STRIPE.
 CONTRA DR TO BORDER BOTH SIDES OF RAMP AND LINE THE CURB WITH A FOUR-INCH WIDE YELLOW STRIPE. COST OF STRIPING TO BE INCLUDED IN COST OF 4\"/>



Groove Detail



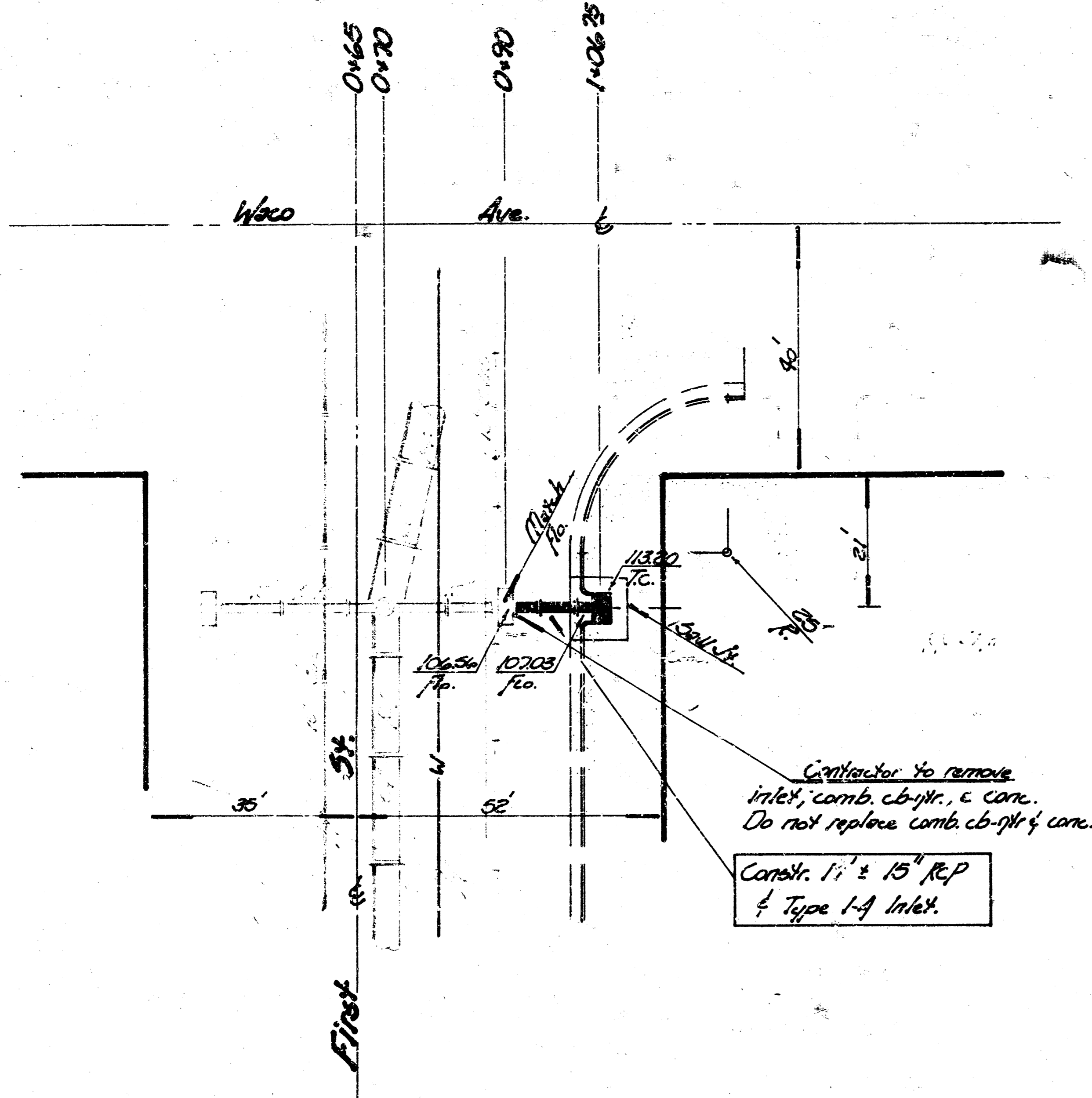
Section Thru Ramp



Wheel Chair Ramp Location Preference

Wheel Chair Ramp Detail

Blk. 115.67 'a' in conc. NE Cor. Floor to entrance Curvey Center Garage.
 Blk. 112.79 'a' S. E. Wk. S.C. 3rd St. E.C. Alley W of Water St
 N.W. Cor. Blk. 205' W. 2nd St.

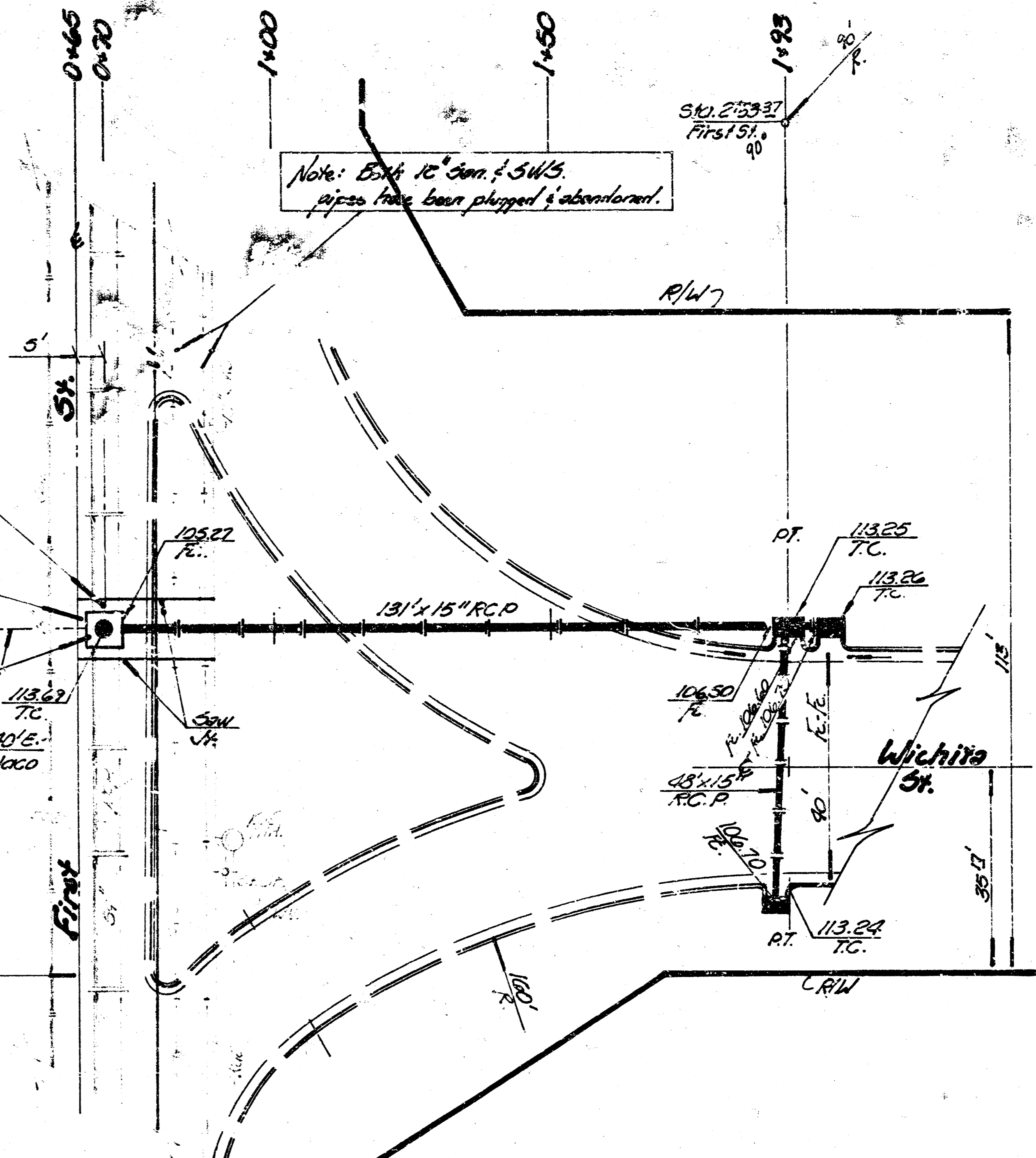


Contractor to remove
 permit & comb. cb. & ptr. ~~Replaces~~
 permit w/ 9" Asphalt. To maintain traffic.
 Do not replace comb. cb-ptr. R.P.V.
 to be replaced w/ 6" Ash Conc. Base & 2" Asphalt.
 During permit const. by paving
 contractor.

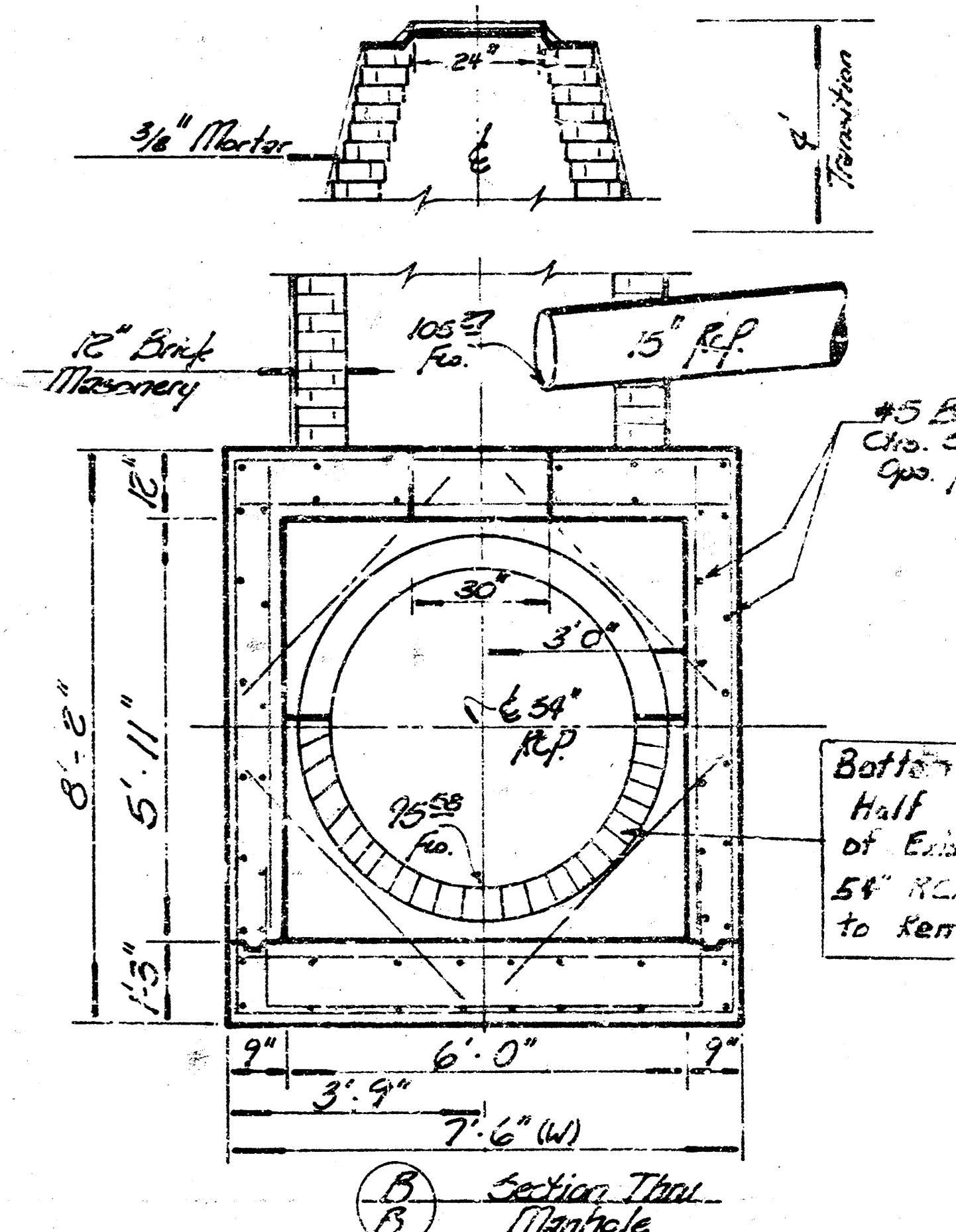
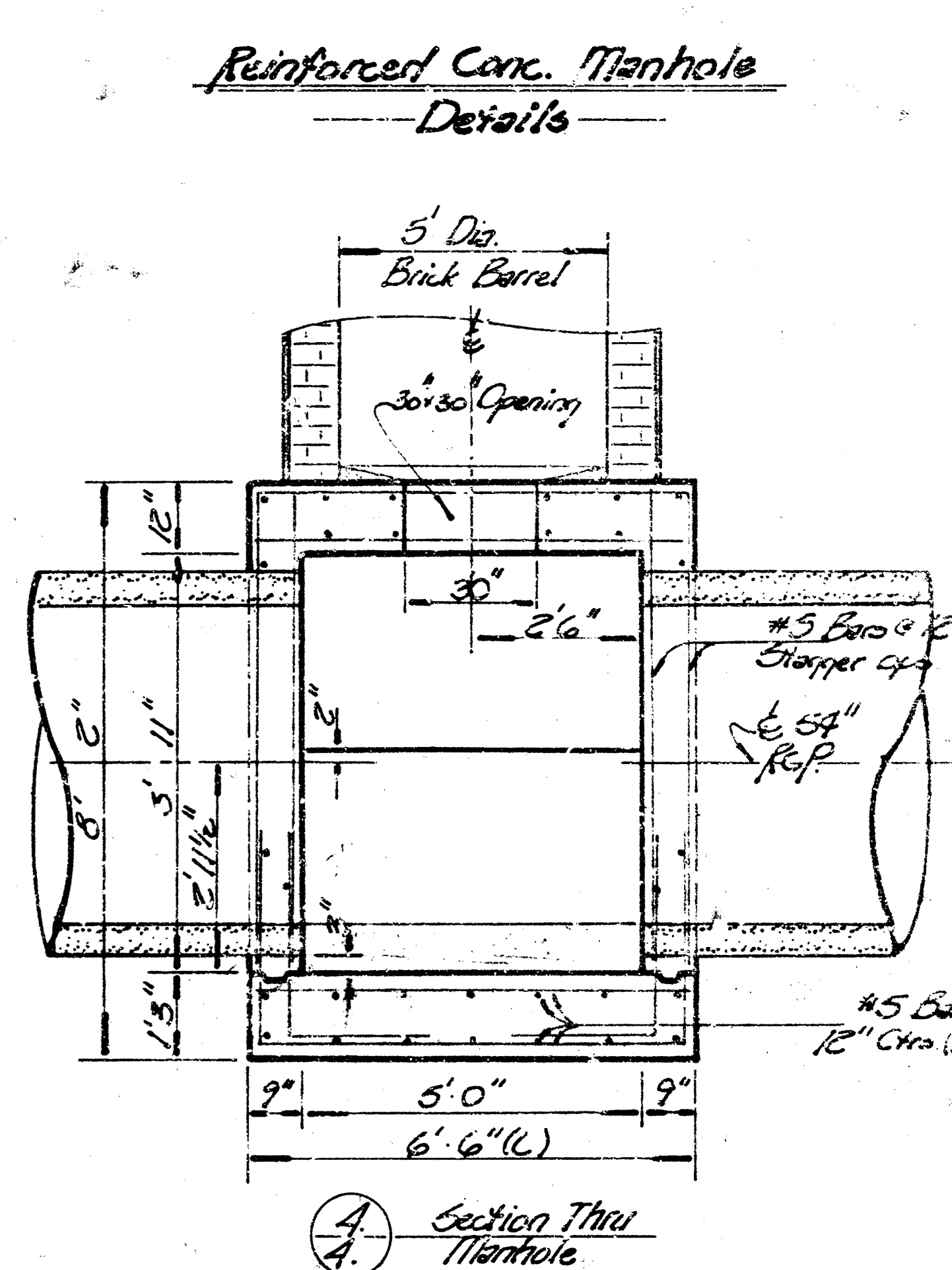
Constr. Reinf. Concrete MH
 131' ± 15" R.P. & Type 1-A Inlets

Note: Constr. Reinf. Conc. MH
 w/ Nuanets (R. 1750-C) MH.
 frame & lid or equal constr.
 Cost incidental to Reinf. Conc. MH.

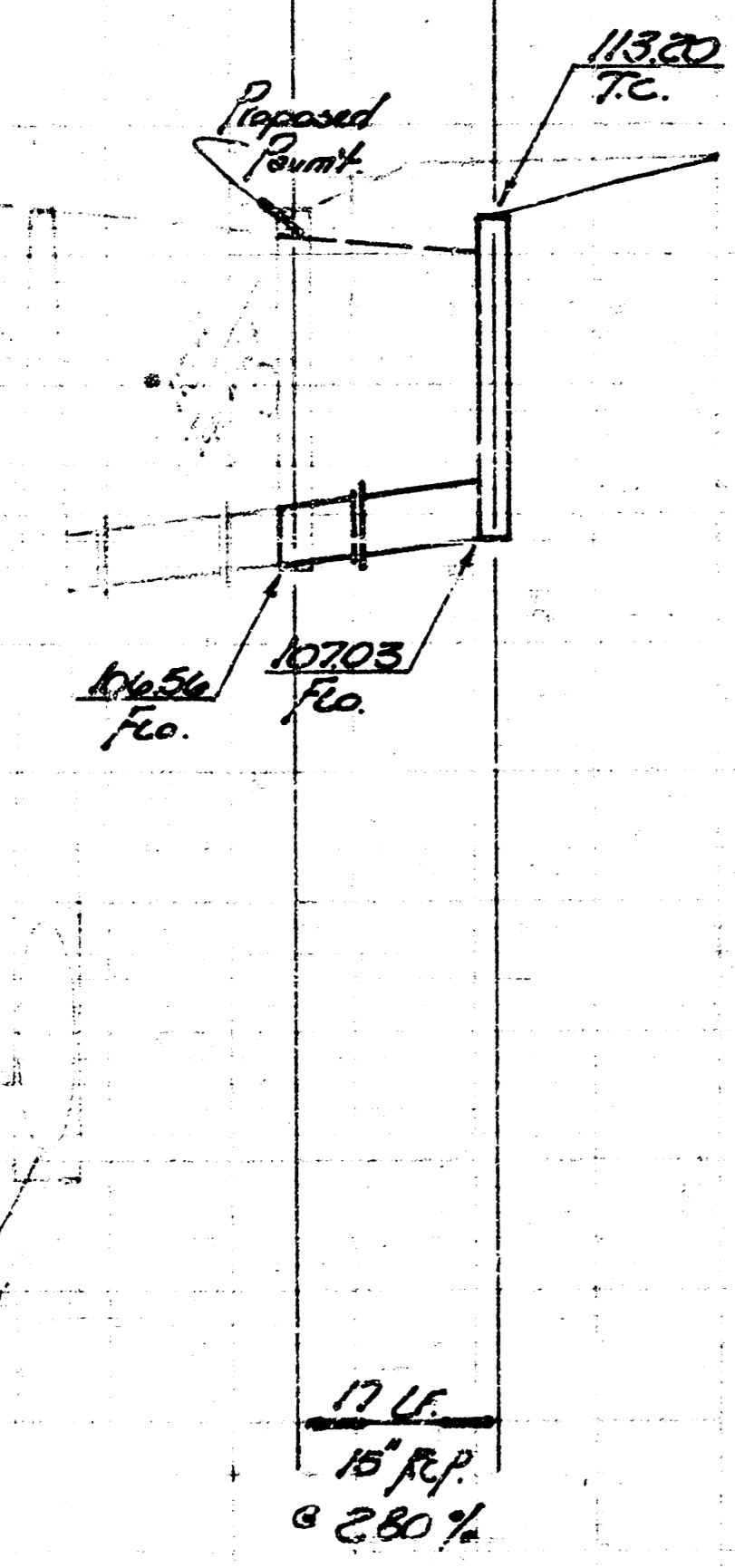
Contractor to remove
 inlet, comb. cb-ptr. & conc.
 Do not replace comb. cb-ptr. of conc.
 Constr. 1 1/2 x 15" R.P.
 & Type 1-A Inlet.



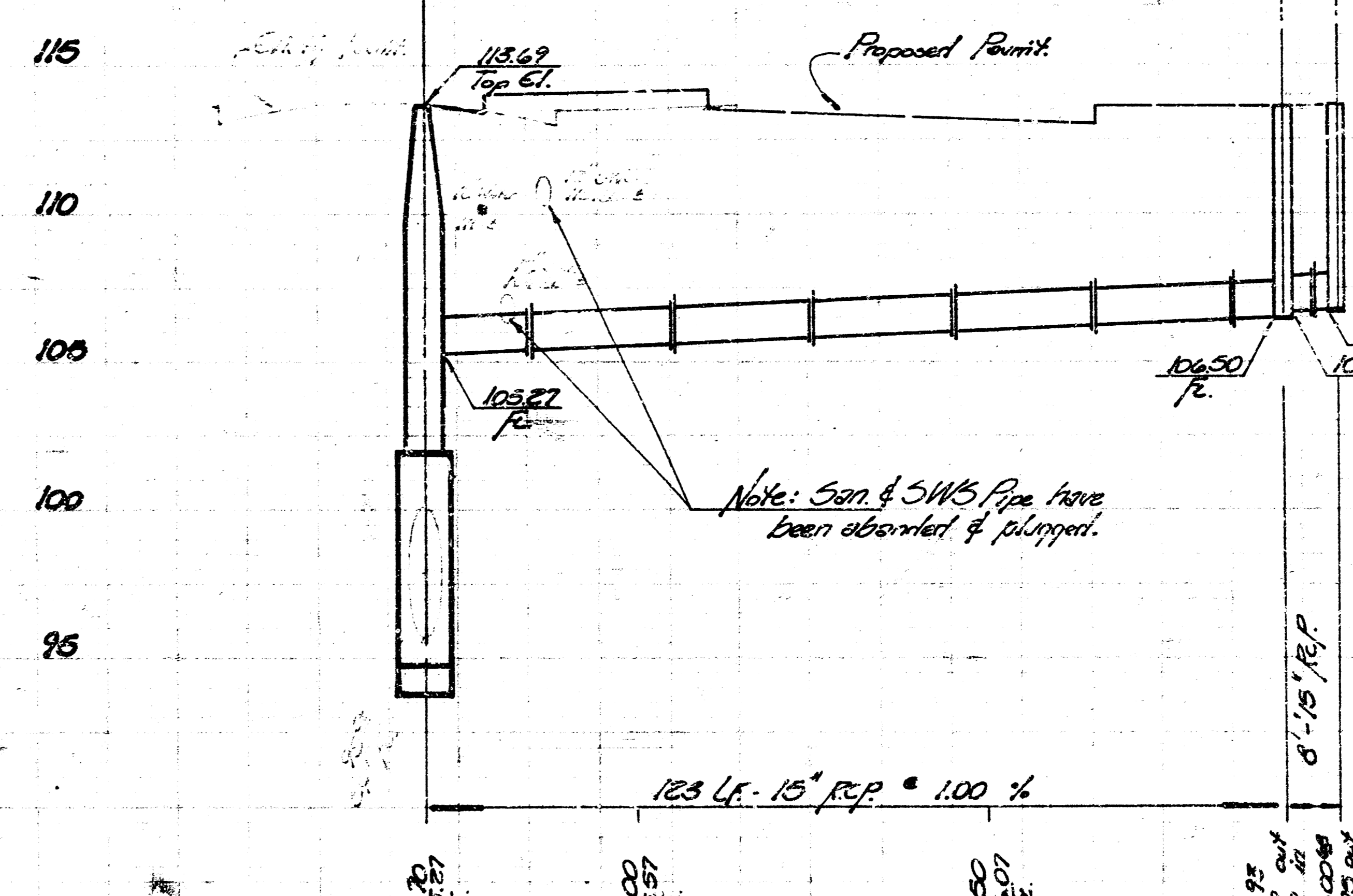
- Scale -
 Plan 1" = 20'
 Profile 1" = 20' Hor.
 1" = 5' Vert.



Exst. 15" R.P. Concr. 5' Dia. Curb
 Manhole Existing 15" R.P. 26.50' Ho.
 Existing Inlet to be removed



Exst. 54" R.P.
 Concr. Reinf. Conc. MH. 5' Dia. Curb
 113.67' Top (See Detail)



As built 3-8-78

Drainage in connection w.
WICHITA ST.
 1ST to 2ND ST.
CITY OF WICHITA
 R. W. Linn City Engineer
 Project No. WKNB50343
 Date: Feb. 11, 77