

CUL-DE-SAC RADIUS = 50'  
 Pavement RADIUS = 35'

24th Street  
 2nd  
 1st

Baseline & Stationing on a line T.E. of W.L. &  
 B.M. 193.96 S.E. Cor Bottom Conc. Strip at 24th Pershing

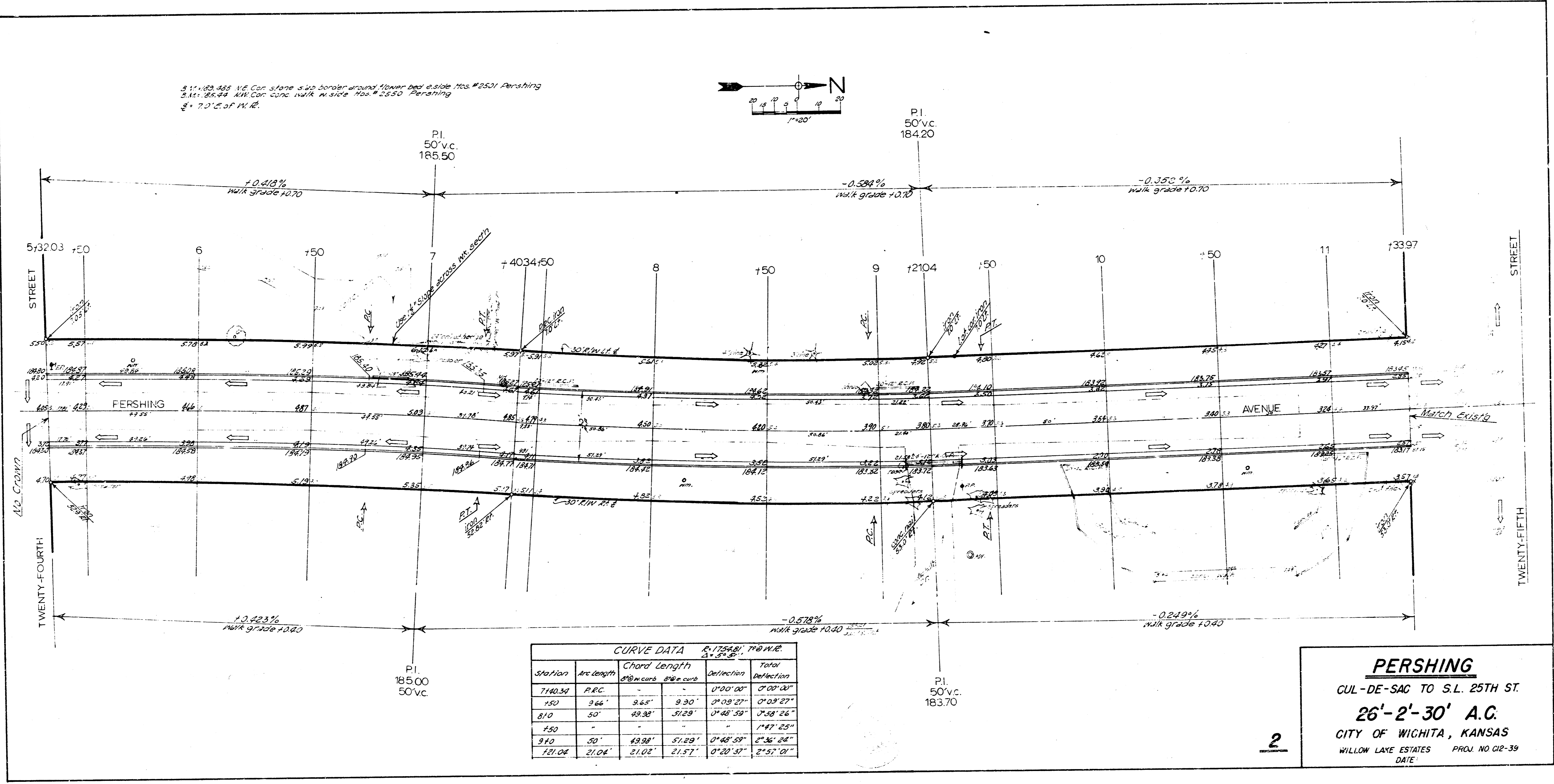
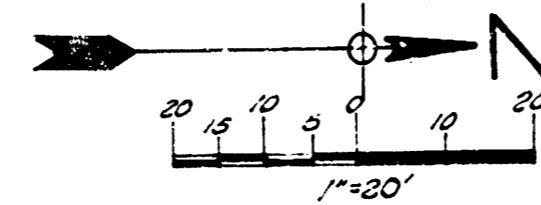
**CURVE DATA**  
 Radius 1/2 of W.L. = 25.00' Δ = 15° 28'  
 Length of Curve = 30.34' W.L. = 0.66256

Sta	ARC	W.L.	Chord	Defl	E. Defl
			W.L.	Angle	
0+00					
0+50	50.00	50.00	49.11	0° 33' 21"	0° 33' 21"
1+00					1° 06' 41"
1+50					1° 40' 05"
2+00					2° 13' 27"
2+50					2° 46' 49"
3+00					3° 20' 11"
3+50					3° 53' 33"
4+00					4° 26' 55"
4+50	50.00	50.00	49.11	0° 33' 21"	5° 00' 16"
4+71.96	22.08	22.08	22.06	2° 47'	5° 12' 00"
5+32.03	59.95	60.13	59.90	0° 40' 00"	5° 55' 00"
5+50	17.97	18.01	17.97	17° 54'	6° 07' 00"
6+00	50.00	50.12	50.00	0° 33' 21"	6° 40' 28"
6+50					7° 13' 43"
7+00	50.00	50.12	50.00	0° 33' 21"	7° 47' 05"
7+42.34	40.34	40.43	40.34	0° 26' 30"	8° 14' 00"

EXCAVATION  
 Property

**PERSHING**  
 CUL-DE-SAC TO S.L. 25TH ST.  
**26'-2'-30' A.C.**  
 CITY OF WICHITA, KANSAS  
 WILLOW LAKE ESTATES PROJ. NO. C12-39  
 DATE: 5-27-52

3" x 1/2" 465 W.C. Con. Stone size border around flower bed & side H.C. #2501 Pershing  
 2.1x1 26.24 KW Con. Conc. Walk W. side H.C. #2650 Pershing  
 2" x 7.0" C. of W.R.

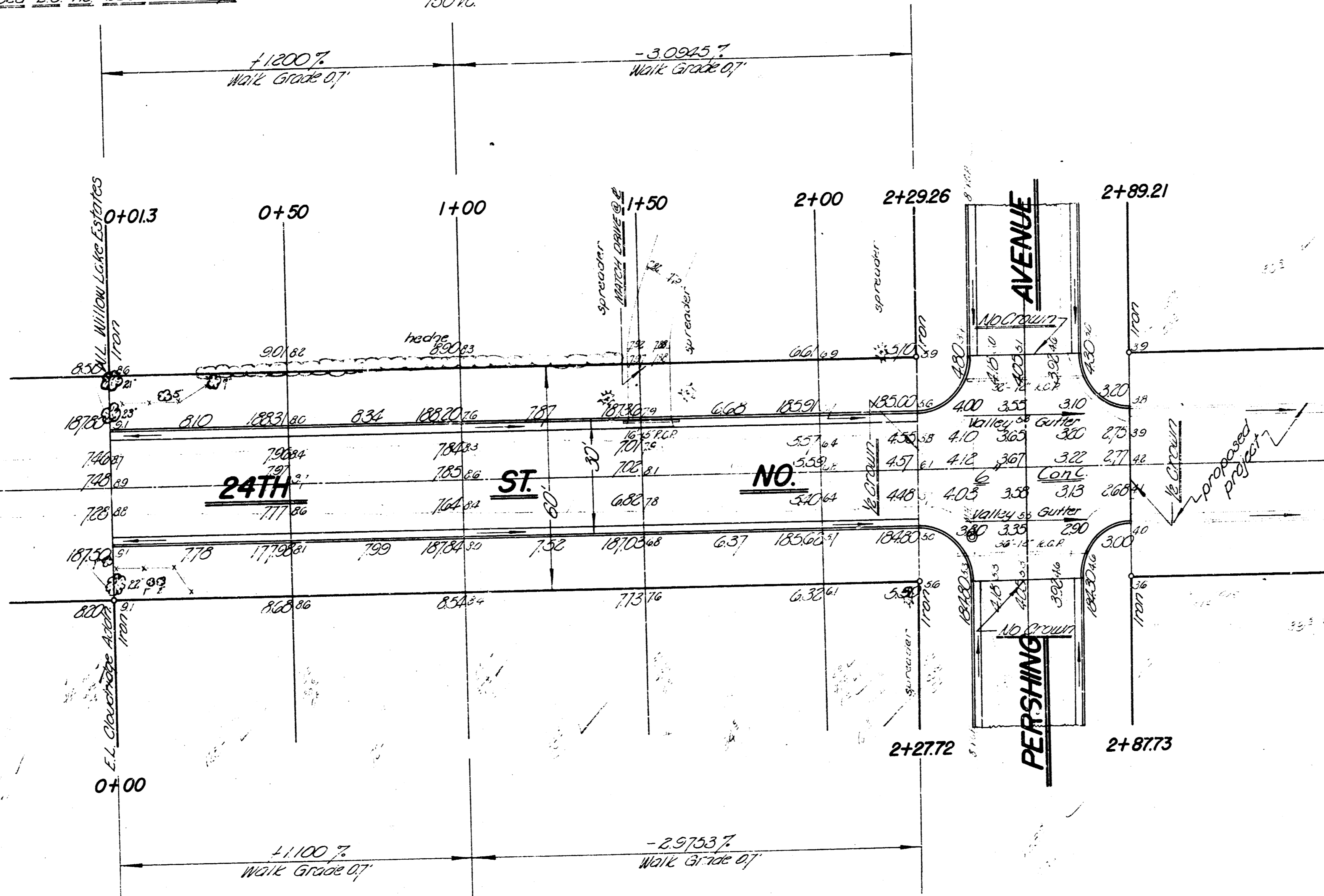
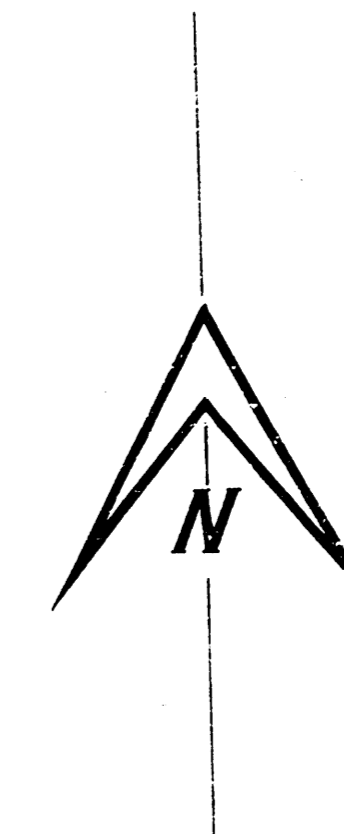


CURVE DATA					
Station	Arc length	Chord Length		Total Deflection	
P.C.	P.T.	8 1/2" curb	8 1/2" curb	8 1/2" curb	8 1/2" curb
7140.34				0°00'00"	0°00'00"
150	9.66'	9.65'	9.30'	0°03'27"	0°03'27"
810	50'	49.98'	51.29'	0°48'59"	0°58'24"
750					1°47'25"
910	50'	49.98'	51.29'	0°48'59"	0°58'24"
721.04	21.04'	21.02'	21.57'	0°20'37"	2°51'01"

**PERSHING**  
 CUL-DE-SAC TO S.L. 25TH ST.  
**26'-2'-30' A.C.**  
 CITY OF WICHITA, KANSAS  
 WILLOW LAYE ESTATES PROJ. NO G2-39  
 DATE:

Base Line & Stationing on South Property Lines  
 B.V. 125-23 N.E. 1st Street Side, Border Around Flower Bed E.S. No. 2501 Pershing

P.I.  
 Elev. 189.00  
 130' V.C.



Grade to North existing roadway 30 W of 0+00

EXCAVATION

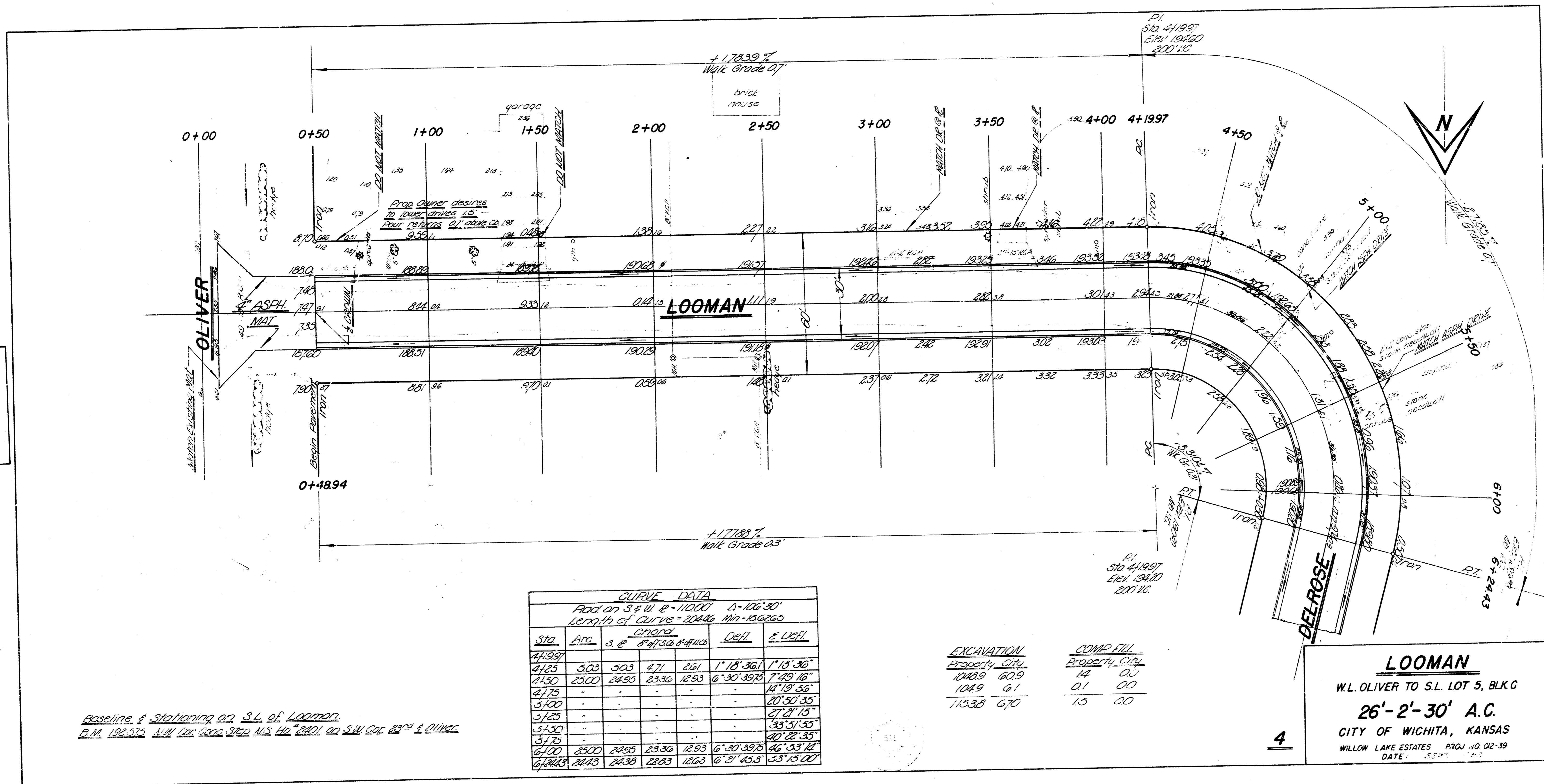
PROP.	CITY
230.6	249.7
23.7	23.0
220.3	214.7

**24TH STREET**  
 W.L. WILLOW LAKE TO W.L. PERSHING  
**26'-2'-30' A.C.**  
 CITY OF WICHITA, KANSAS  
 WILLOW LAKE ESTATES PROJ. NO. 02-39  
 DATE: 3-27-1953

3



315  
JUL



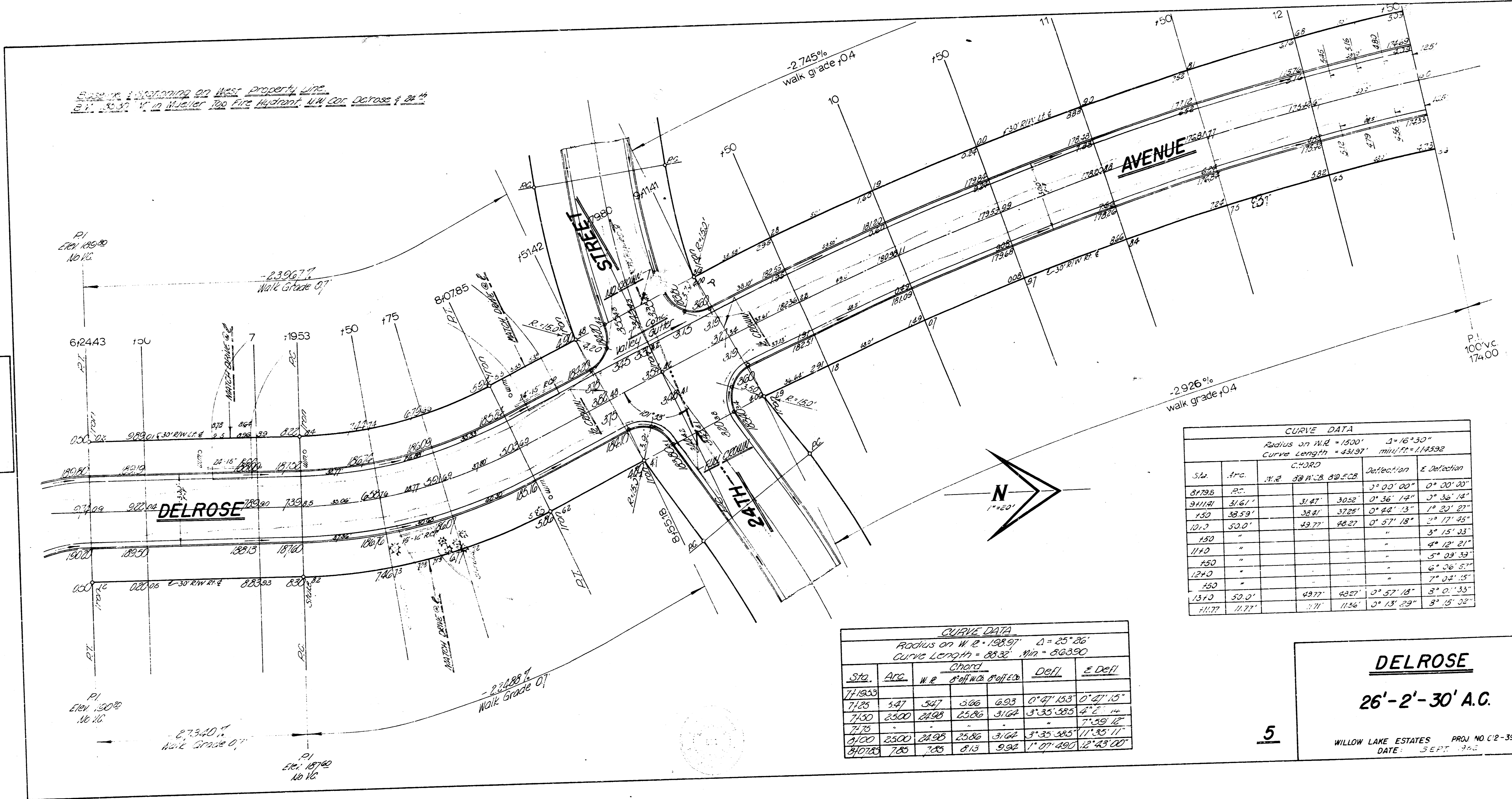
Baseline & Stationing on S.L. of Looman  
 B.M. 192.575 N.W. Cor. Cora. St. & S.W. Cor. S.W. 1/4 on S.W. Cor. 23rd & Oliver

CURVE DATA					
Rad on S & W R = 11000 D = 106°30'					
Length of Curve = 204.16 Min = 15.6265					
Sta	Arc	Chord		Defl	E Defl
		s	e	∠	
41.997					
41.25	5.03	5.03	4.71	2.61	1°18'36"
41.50	25.00	24.93	23.36	12.93	6°30'39.8"
41.75					14°19'56"
41.00					20°50'35"
41.25					27°21'15"
41.50					33°51'35"
41.75					40°22'35"
41.00	25.00	24.93	23.36	12.93	16°30'39.8"
41.25	24.93	24.93	23.36	12.93	16°31'45.3"

EXCAVATION		COMP. FILL	
Property	City	Property	City
104.89	60.9	14	00
104.9	6.1	0.1	00
115.38	6.70	1.5	00

**LOOMAN**  
 W.L. OLIVER TO S.L. LOT 5, BLK. C  
**26'-2"-30' A.C.**  
 CITY OF WICHITA, KANSAS  
 WILLOW LAKE ESTATES PROJ. NO. 02-39  
 DATE

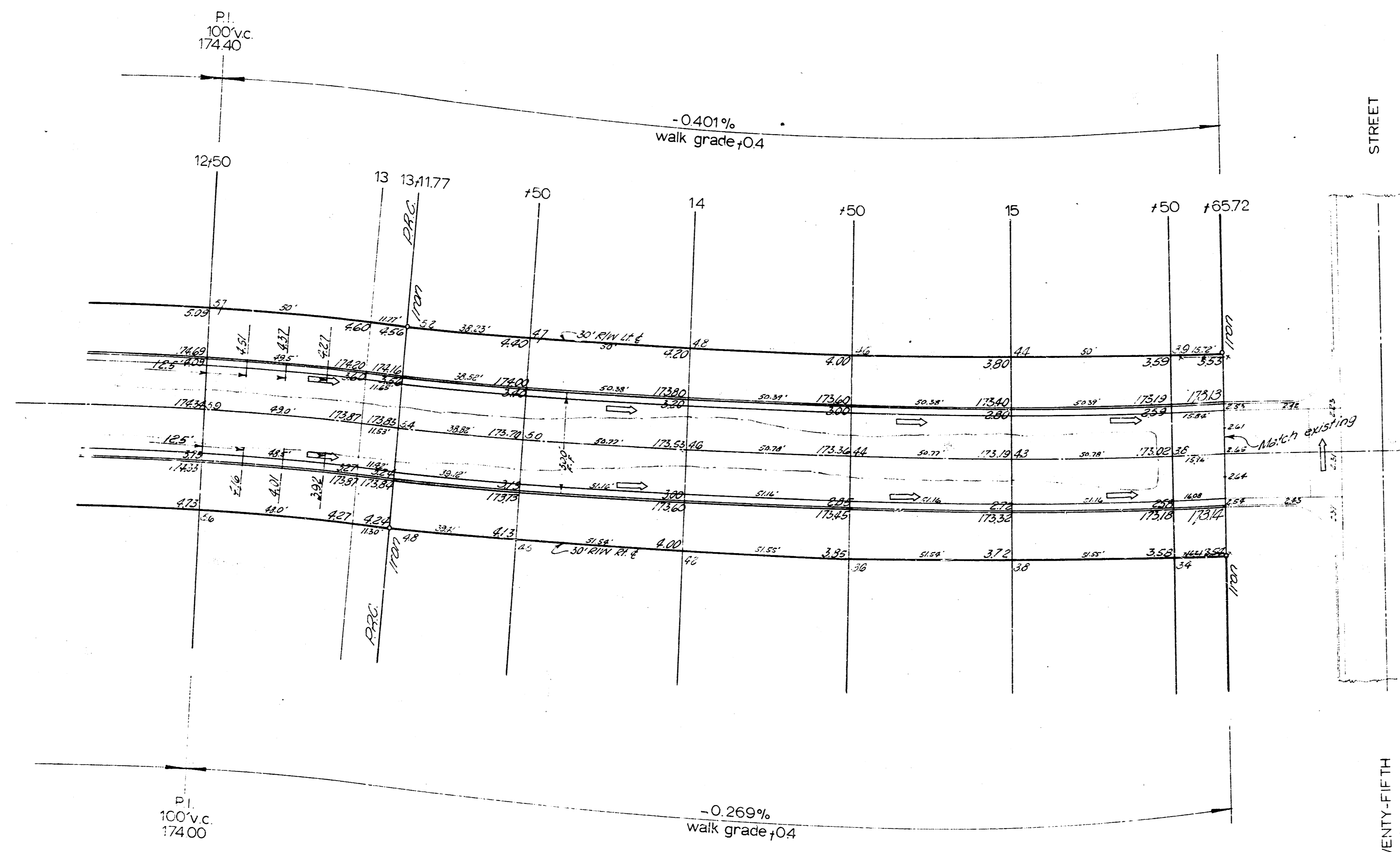
BASED ON SURVEYING ON WEST PROPERTY LINE.  
 3" x 3" 1/2" IN DIAMETER FOR FIRE HYDRANT. MIN. CONC. DEPRESS. 4" DIA.



**CURVE DATA**  
 Radius on W.E. 138.97' Δ = 25° 26'  
 Curve Length = 88.32' Min = 88.390

Sta.	Arc	Chord	Defl.	E. Defl.
W.E.	W.E.	8" x 11" x 16" Project		
71.853				
71.85	5.47	5.47	0.00	0.00
71.80	10.94	10.94	0.00	0.00
71.75	16.41	16.41	0.00	0.00
71.70	21.88	21.88	0.00	0.00
71.65	27.35	27.35	0.00	0.00
71.60	32.82	32.82	0.00	0.00
71.55	38.29	38.29	0.00	0.00
71.50	43.76	43.76	0.00	0.00
71.45	49.23	49.23	0.00	0.00
71.40	54.70	54.70	0.00	0.00
71.35	60.17	60.17	0.00	0.00
71.30	65.64	65.64	0.00	0.00
71.25	71.11	71.11	0.00	0.00
71.20	76.58	76.58	0.00	0.00
71.15	82.05	82.05	0.00	0.00
71.10	87.52	87.52	0.00	0.00
71.05	92.99	92.99	0.00	0.00
71.00	98.46	98.46	0.00	0.00
70.95	103.93	103.93	0.00	0.00
70.90	109.40	109.40	0.00	0.00
70.85	114.87	114.87	0.00	0.00
70.80	120.34	120.34	0.00	0.00
70.75	125.81	125.81	0.00	0.00
70.70	131.28	131.28	0.00	0.00
70.65	136.75	136.75	0.00	0.00
70.60	142.22	142.22	0.00	0.00
70.55	147.69	147.69	0.00	0.00
70.50	153.16	153.16	0.00	0.00
70.45	158.63	158.63	0.00	0.00
70.40	164.10	164.10	0.00	0.00
70.35	169.57	169.57	0.00	0.00
70.30	175.04	175.04	0.00	0.00
70.25	180.51	180.51	0.00	0.00
70.20	185.98	185.98	0.00	0.00
70.15	191.45	191.45	0.00	0.00
70.10	196.92	196.92	0.00	0.00
70.05	202.39	202.39	0.00	0.00
70.00	207.86	207.86	0.00	0.00
70.00	213.33	213.33	0.00	0.00
70.00	218.80	218.80	0.00	0.00
70.00	224.27	224.27	0.00	0.00
70.00	229.74	229.74	0.00	0.00
70.00	235.21	235.21	0.00	0.00
70.00	240.68	240.68	0.00	0.00
70.00	246.15	246.15	0.00	0.00
70.00	251.62	251.62	0.00	0.00
70.00	257.09	257.09	0.00	0.00
70.00	262.56	262.56	0.00	0.00
70.00	268.03	268.03	0.00	0.00
70.00	273.50	273.50	0.00	0.00
70.00	278.97	278.97	0.00	0.00
70.00	284.44	284.44	0.00	0.00
70.00	289.91	289.91	0.00	0.00
70.00	295.38	295.38	0.00	0.00
70.00	300.85	300.85	0.00	0.00
70.00	306.32	306.32	0.00	0.00
70.00	311.79	311.79	0.00	0.00
70.00	317.26	317.26	0.00	0.00
70.00	322.73	322.73	0.00	0.00
70.00	328.20	328.20	0.00	0.00
70.00	333.67	333.67	0.00	0.00
70.00	339.14	339.14	0.00	0.00
70.00	344.61	344.61	0.00	0.00
70.00	350.08	350.08	0.00	0.00
70.00	355.55	355.55	0.00	0.00
70.00	361.02	361.02	0.00	0.00
70.00	366.49	366.49	0.00	0.00
70.00	371.96	371.96	0.00	0.00
70.00	377.43	377.43	0.00	0.00
70.00	382.90	382.90	0.00	0.00
70.00	388.37	388.37	0.00	0.00
70.00	393.84	393.84	0.00	0.00
70.00	399.31	399.31	0.00	0.00
70.00	404.78	404.78	0.00	0.00
70.00	410.25	410.25	0.00	0.00
70.00	415.72	415.72	0.00	0.00
70.00	421.19	421.19	0.00	0.00
70.00	426.66	426.66	0.00	0.00
70.00	432.13	432.13	0.00	0.00
70.00	437.60	437.60	0.00	0.00
70.00	443.07	443.07	0.00	0.00
70.00	448.54	448.54	0.00	0.00
70.00	454.01	454.01	0.00	0.00
70.00	459.48	459.48	0.00	0.00
70.00	464.95	464.95	0.00	0.00
70.00	470.42	470.42	0.00	0.00
70.00	475.89	475.89	0.00	0.00
70.00	481.36	481.36	0.00	0.00
70.00	486.83	486.83	0.00	0.00
70.00	492.30	492.30	0.00	0.00
70.00	497.77	497.77	0.00	0.00
70.00	503.24	503.24	0.00	0.00
70.00	508.71	508.71	0.00	0.00
70.00	514.18	514.18	0.00	0.00
70.00	519.65	519.65	0.00	0.00
70.00	525.12	525.12	0.00	0.00
70.00	530.59	530.59	0.00	0.00
70.00	536.06	536.06	0.00	0.00
70.00	541.53	541.53	0.00	0.00
70.00	547.00	547.00	0.00	0.00
70.00	552.47	552.47	0.00	0.00
70.00	557.94	557.94	0.00	0.00
70.00	563.41	563.41	0.00	0.00
70.00	568.88	568.88	0.00	0.00
70.00	574.35	574.35	0.00	0.00
70.00	579.82	579.82	0.00	0.00
70.00	585.29	585.29	0.00	0.00
70.00	590.76	590.76	0.00	0.00
70.00	596.23	596.23	0.00	0.00
70.00	601.70	601.70	0.00	0.00
70.00	607.17	607.17	0.00	0.00
70.00	612.64	612.64	0.00	0.00
70.00	618.11	618.11	0.00	0.00
70.00	623.58	623.58	0.00	0.00
70.00	629.05	629.05	0.00	0.00
70.00	634.52	634.52	0.00	0.00
70.00	640.00	640.00	0.00	0.00
70.00	645.47	645.47	0.00	0.00
70.00	650.94	650.94	0.00	0.00
70.00	656.41	656.41	0.00	0.00
70.00	661.88	661.88	0.00	0.00
70.00	667.35	667.35	0.00	0.00
70.00	672.82	672.82	0.00	0.00
70.00	678.29	678.29	0.00	0.00
70.00	683.76	683.76	0.00	0.00
70.00	689.23	689.23	0.00	0.00
70.00	694.70	694.70	0.00	0.00
70.00	700.17	700.17	0.00	0.00
70.00	705.64	705.64	0.00	0.00
70.00	711.11	711.11	0.00	0.00
70.00	716.58	716.58	0.00	0.00
70.00	722.05	722.05	0.00	0.00
70.00	727.52	727.52	0.00	0.00
70.00	732.99	732.99	0.00	0.00
70.00	738.46	738.46	0.00	0.00
70.00	743.93	743.93	0.00	0.00
70.00	749.40	749.40	0.00	0.00
70.00	754.87	754.87	0.00	0.00
70.00	760.34	760.34	0.00	0.00
70.00	765.81	765.81	0.00	0.00
70.00	771.28	771.28	0.00	0.00
70.00	776.75	776.75	0.00	0.00
70.00	782.22	782.22	0.00	0.00
70.00	787.69	787.69	0.00	0.00
70.00	793.16	793.16	0.00	0.00
70.00	798.63	798.63	0.00	0.00
70.00	804.10	804.10	0.00	0.00
70.00	809.57	809.57	0.00	0.00
70.00	815.04	815.04	0.00	0.00
70.00	820.51	820.51	0.00	0.00
70.00	825.98	825.98	0.00	0.00
70.00	831.45	831.45	0.00	0.00
70.00	836.92	836.92	0.00	0.00
70.00	842.39	842.39	0.00	0.00
70.00	847.86	847.86	0.00	0.00
70.00	853.33	853.33	0.00	0.00
70.00	858.80	858.80	0.00	0.00
70.00	864.27	864.27	0.00	0.00
70.00	869.74	869.74	0.00	0.00
70.00	875.21	875.21	0.00	0.00
70.00	880.68	880.68	0.00	0.00
70.00	886.15	886.15	0.00	0.00
70.00	891.62	891.62	0.00	0.00
70.00	897.09	897.09	0.00	0.00
70.00	902.56	902.56	0.00	0.00
70.00	908.03	908.03	0.00	0.00
70.00	913.50	913.50	0.00	0.00
70.00	918.97	918.97	0.00	0.00
70.00	924.44	924.44	0.00	0.00
70.00	929.91	929.91	0.00	0.00
70.00	935.38	935.38	0.00	0.00
70.00	940.85	940.85	0.00	0.00
70.00	946.32	946.32	0.00	0.00
70.00	951.79	951.79	0.00	0.00
70.00	957.26	957.26	0.00	0.00
70.00	962.73	962.73	0.00	0.00
70.00	968.20	968.20	0.00	0.00
70.00	973.67	973.67	0.00	0.00
70.00	979.14	979.14	0.00	0.00
70.00	984.61	984.61	0.00	0.00
70.00	990.08	990.08	0.00	0.00
70.00	995.55	995.55	0.00	0.00
70.00	1001.02	1001.02	0.00	0.00
70.00	1006.49	1006.49	0.00	0.00
70.00	1011.96	1011.96	0.00	0.00
70.00	1017.43	1017.43	0.00	0.00
70.00	1022.90	1022.90	0.00	0.00
70.00	1028.37	1028.37	0.00	0.00
70.00	1033.84	1033.84	0.00	0.00
70.00	1039.31	1039.31	0.00	0.00
70.00	1044.78	1044.78	0.00	0.00
70.00	1050.25	1050.25	0.00	0.00
70.00	1055.72	1055.72	0.00	0.00
70.00	106			

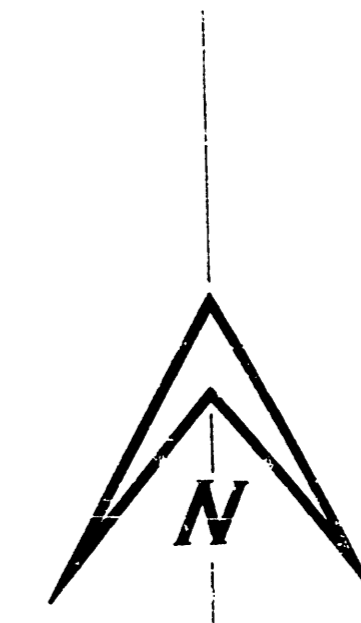
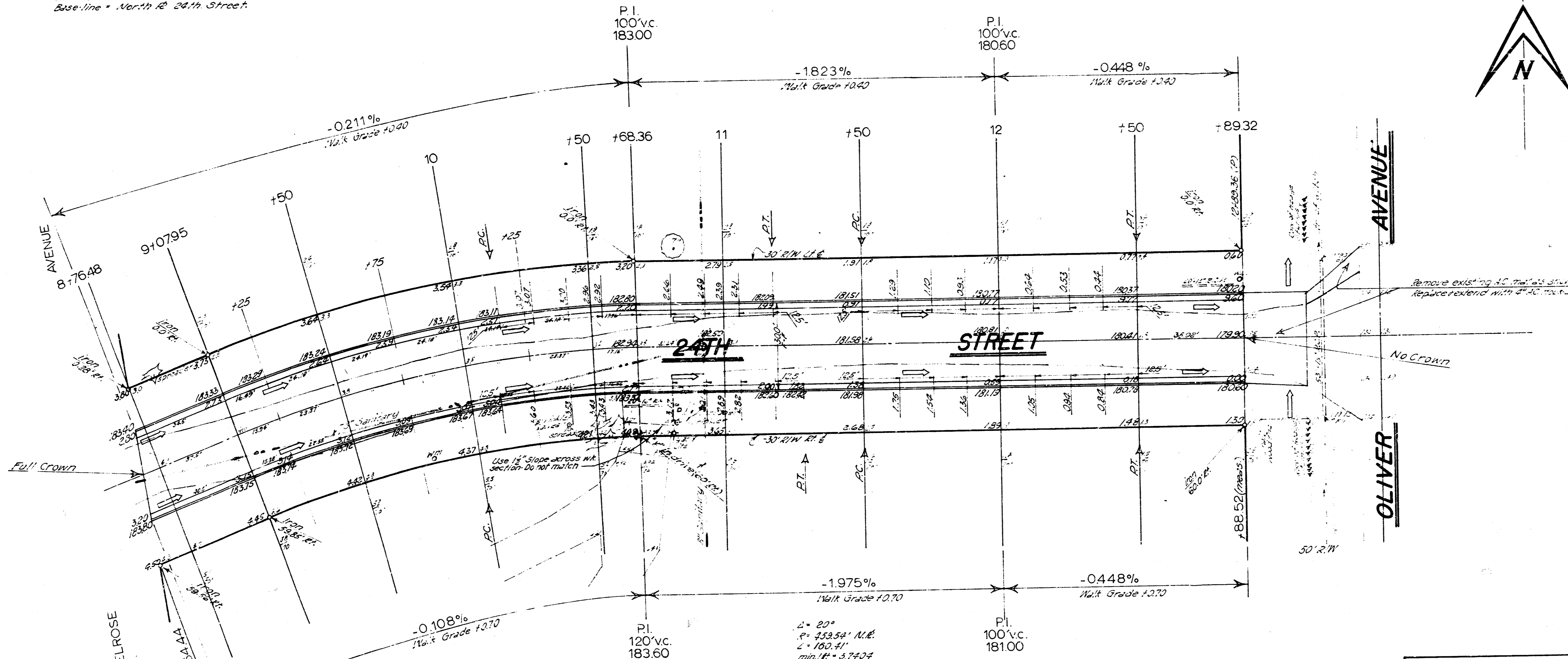
Baseline & Stationing on West Property Line  
 S.W. 1/4 Sec 31 of S 14 Township 26 N. of W. 1/4 Range 25 W.



CURVE DATA					
Radius on M.R. = 7340'    Δ = 7°30'					
Curve Length = 253.35'    min/ft. = 0.336022					
Sta	Arc	M.R.	MCB	ECA	Deflection & Deflection
12+17.72					0° 00' 00"    0° 00' 00"
14+17	30'	38.38	33.30		0° 33' 52"    0° 33' 52"
14+50	50'	52.0'	51.36		0° 44' 18"    0° 44' 18"
15+00					0° 00' 00"    0° 00' 00"
15+10	20'	32.18	31.54		0° 44' 18"    0° 44' 18"
15+20	30'	45.73	45.10		0° 13' 36"    0° 13' 36"

**DELROSE**  
**26'-2'-30' A.C.**  
 WILLOW LAKE ESTATES PROJ 012-39  
 DATE:

2.M.182.65 P.R. Spike Sp. side large bridge from N Side Oliver approx 35' W of N.E. 24th Street.  
 2.M.185.50 "M" in Manhole - top line hydrant, NW Cor. Delrose & 24th Street.  
 base line - North of 24th Street.



U.S. 80  
 1/16" = 100'

Curve Data					
Station	Arc	80' N curb	80' S curb	Deflection	Total Deflection
3107.95	PC			0° 00' 00"	0° 00' 00"
125	17.05'	15.79'	15.08'	1° 03' 47"	1° 03' 47"
130	25.0'	24.62'	22.16'	1° 55' 31"	2° 59' 18"
135					5° 04' 20"
140					7° 17' 45"
150	25.0'	24.22'	22.72'	1° 33' 31"	8° 51' 22"
163.36	8.35'	18.08'	14.25'	1° 08' 41"	10° 00' 03"

**24TH ST.**  
**26'-2'-30' A.C.**  
 7  
 WILLOW LAKE ESTATES PROJ C12-39  
 DATE: