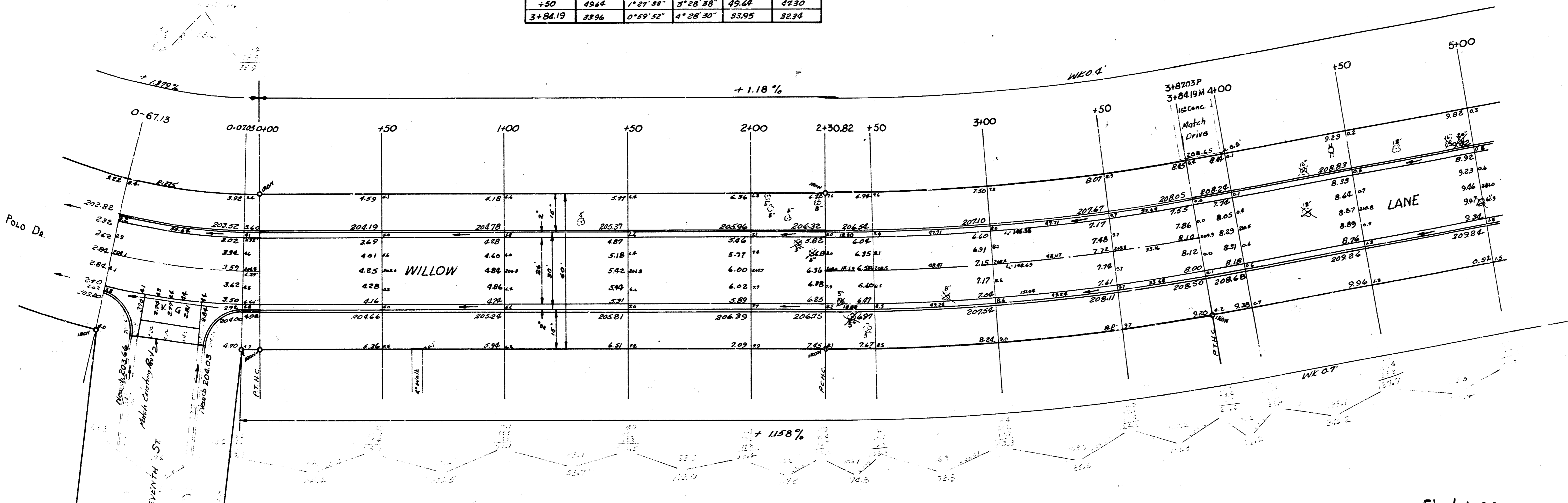
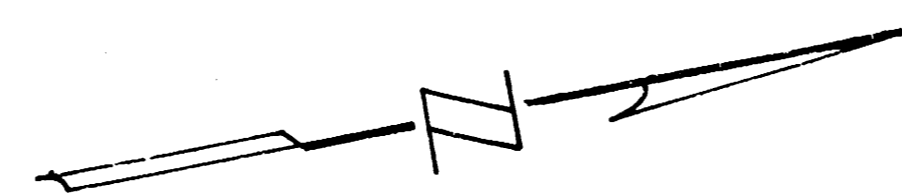


BM 20844 2" in Ditchie Top curb N end radius NE cor. Charlotte #11<sup>th</sup>  
 BM 21526 Extreme SE cor stone Ornamental monument SE cor. 13<sup>th</sup> & Charlotte.  
 Stationing on East Property Line.

CURVE DATA: Sta. 2+30.82 to Sta. 3+84.19 on 8' offset Ecb.  
 R= 974.93' Δ= 8° 57' Defl= 1.763mm/H. Sta. on E. R.

STATION	Arc Length 8' offset Ecb	Deflection Angle 1/63	Total Deflection	Chord Length 8' offset Ecb	Chord Length 8' offset Ecb
2+30.82					
+50	19.04	0° 35' 34"	0° 35' 34"	19.03	18.15
3+00	49.44	1° 27' 38"	2° 01' 04"	49.64	47.80
+50	49.44	1° 27' 38"	3° 28' 38"	49.64	47.80
3+84.19	33.94	0° 59' 52"	4° 28' 30"	33.95	32.84



1573.9  
 1614  
 1612  
 177.16 ft.

Sheet 1 of 2  
**WILLOW LANE**  
 SL 11<sup>th</sup> St. to SL 13<sup>th</sup> St.  
 26-2-30AC.  
 CITY OF WICHITA, KANSAS  
 B.E. SMITH CITY ENGINEER  
 PROJ. NO. C16-144



