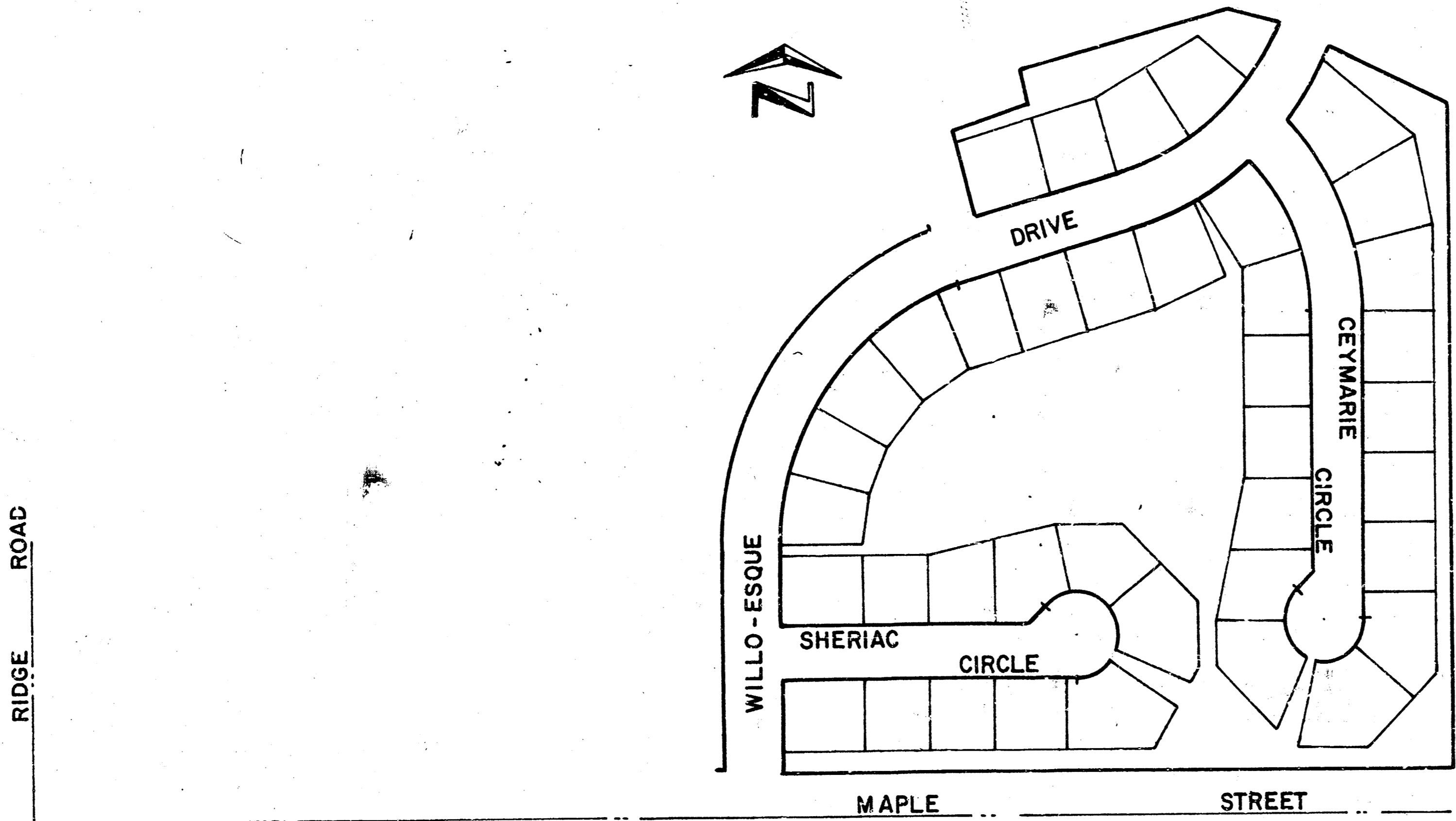


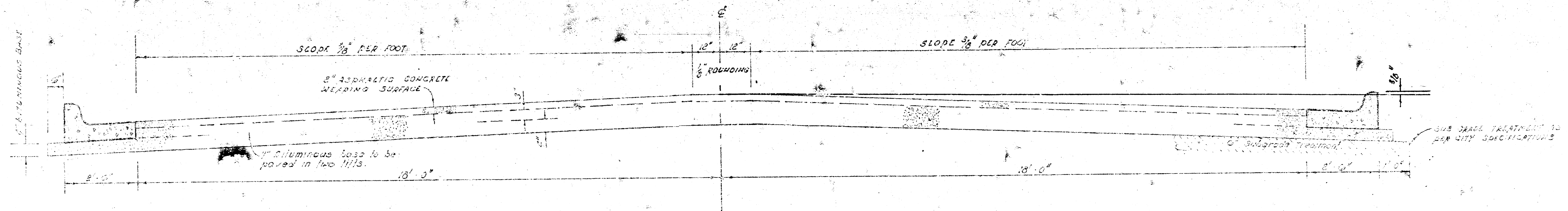
STREETS IN WILLO-ESQUE FIRST ADDITION

WILLO-ESQUE DRIVE - N.L. Maple St to N.L. Willo-Esque First Addn.
SHERIAC CIRCLE - E.L. Willo-Esque Dr to and incl Cul-de-Sac.
CEYMARIE CIRCLE - E.L. Willo-Esque Dr to and incl Cul-de-Sac.

CITY OF WICHITA, KANSAS

R.W. LINN CITY ENGINEER
PROJECT No. DAKC 572003





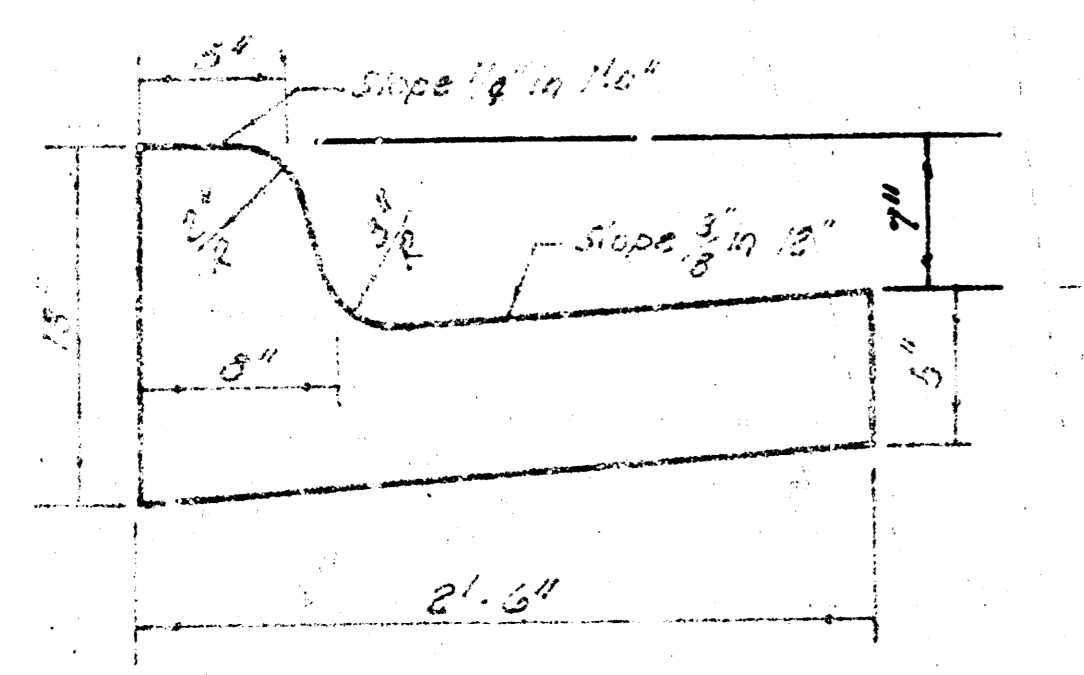
The A.C. pavement between the curb and gutter shall be paid as 2" A.C. pavement. The bituminous base under the curb & gutter shall be paid as 2" bituminous base.

TYPICAL SECTION

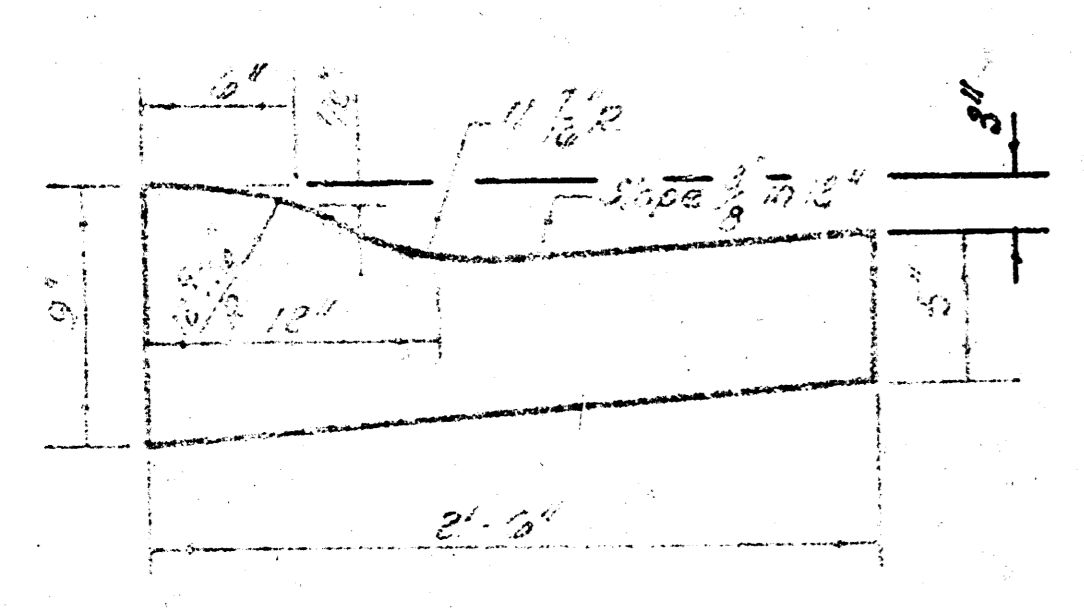
4' ASPHALTIC CONCRETE PAVEMENT WITH BITUMINOUS BASE

A TACK COAT OF EMULSIFIED ASPHALT (SS-1H) SHALL BE APPLIED AT AN APPROXIMATE RATE 0.05 GALLONS PER SQ YD BETWEEN LIFTS OF ASPHALTIC MATERIALS WHEN ORDERED BY THE ENGINEER. TACK COAT WILL NOT BE PAID FOR DIRECTLY AND SHALL BE CONSIDERED AS SUBSIDIARY TO PRICE BID FOR ASPHALTIC PAVEMENT. BITUMINOUS BASE AND ASPHALTIC CONCRETE WEARING SURFACE SHALL BE PLACED WITH A LAYDOWN MACHINE HAVING AUTOMATIC ELECTRONIC CONTROLS FOR CROWN AND GRADE. CONSTRUCTION JOINTS IN EACH LIFT SHALL BE STAGGERED A MINIMUM DISTANCE OF 1' WITH JOINTS IN PRECEDING LIFTS AND SUCH THAT A JOINT WILL BE CONSTRUCTED ON THE PAVEMENT CENTERLINE IN THE TOP LIFT.

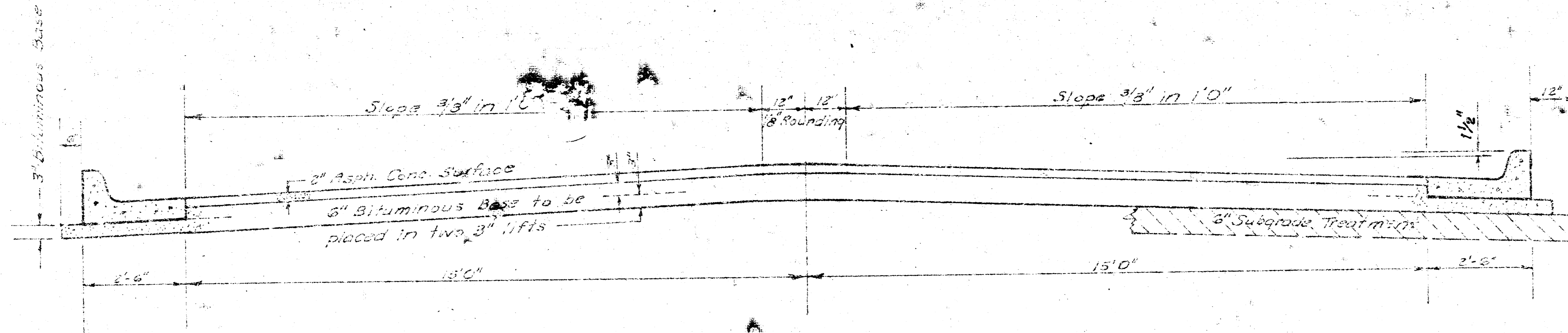
COMBINED CURB & GUTTER



ROLL TYPE CURB & GUTTER



CITY OF WICHITA, KANSAS
 DEPARTMENT OF PUBLIC WORKS - EQUIPMENT DIVISION
 R. W. LINN CITY ENGINEER
 DATE _____ Proj. No. DAKC 572003



TYPICAL SECTION

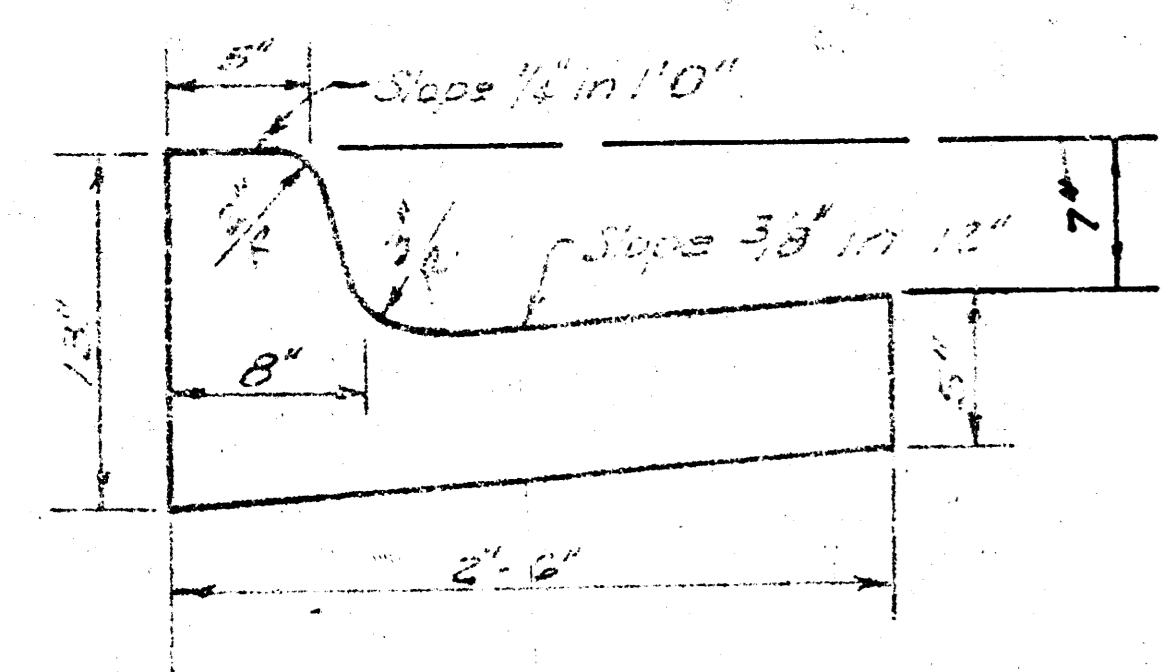
35' ASPHALTIC CONCRETE PAVEMENT WITH BITUMINOUS BASE

A TACK COAT OF EMULSIFIED ASPHALT (SS-1H) SHALL BE APPLIED AT AN APPROXIMATE RATE 0.05 GALLONS PER SQ YD BETWEEN LIFTS OF ASPHALTIC MATERIALS WHEN ORDERED BY THE ENGINEER. TACK COAT WILL NOT BE PAID FOR DIRECTLY AND SHALL BE CONSIDERED AS SUBSIDIARY TO PRICE BID FOR ASPHALTIC PAVEMENT.

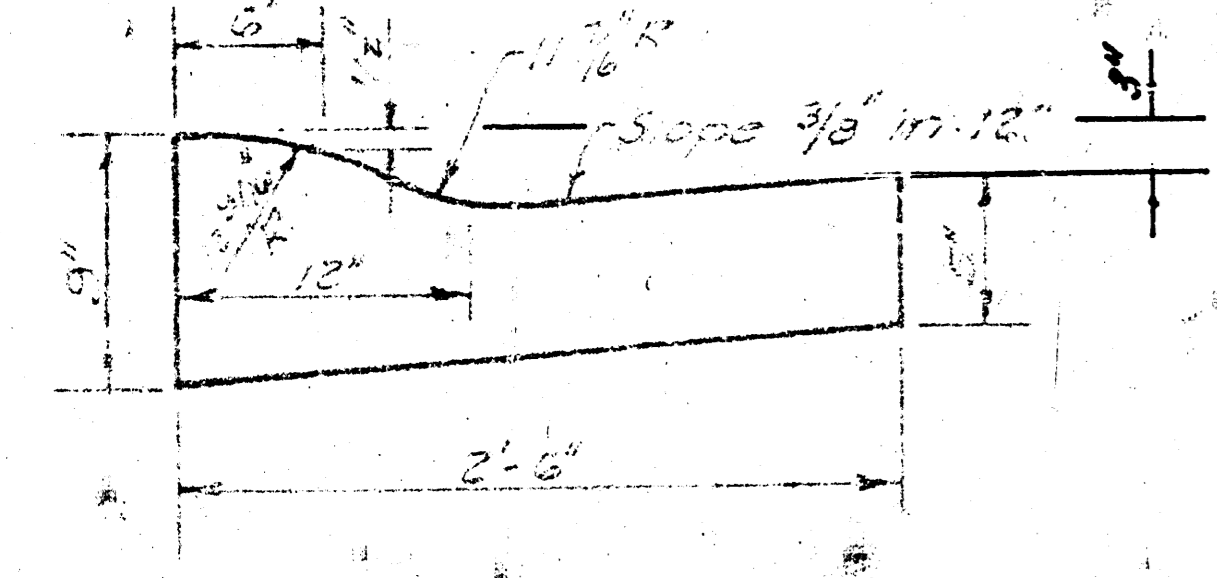
BITUMINOUS BASE AND ASPHALTIC CONCRETE WEARING SURFACE SHALL BE PLACED WITH A LAYDOWN MACHINE HAVING AUTOMATIC ELECTRONIC CONTROLS FOR CROWN AND GRADE. CONSTRUCTION JOINTS IN EACH LIFT SHALL BE STAGGERED A MINIMUM DISTANCE OF 1' WITH JOINTS IN PRECEDING LIFTS AND PLACED SUCH THAT A JOINT WILL BE CONSTRUCTED ON THE CENTERLINE IN THE TOP LIFT.

*The A.C. Pavement between the comb. curb & gutter shall be paid as Sq. Yds. 8" A.C. Pavement (6" Bituminous Base).
The Bituminous Base under the comb. curb & gutter shall be paid as Sq. Yds. 3" Bituminous Base.*

COMBINED CURB & GUTTER



ROLL TYPE CURB & GUTTER



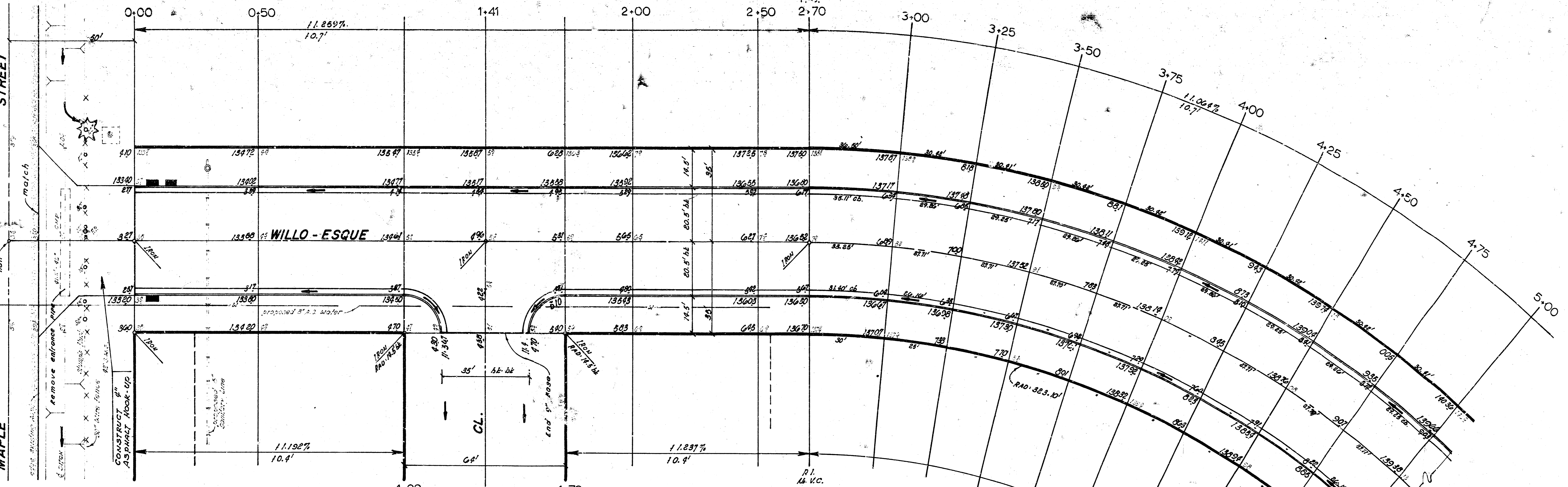
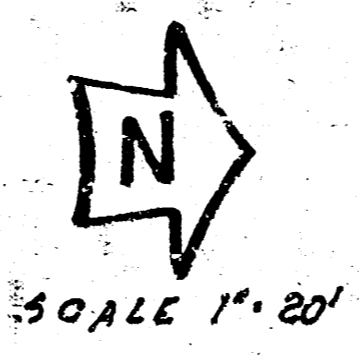
CITY OF WICHITA KANSAS

DEPARTMENT OF PUBLIC WORKS - Engineering Division

R. W. LINH CITY ENGINEER

DATE _____ Proj. No. DAKC 572003

A.M. 101.06 CITY STD RIDGE ROAD and MAPLE - 34' E and 92' S. of Both.
 B.M. 132.34 R.R. Spike N. face power pole 3.31d Maple 48' E. of E.L. WILLO ESQUE DRIVE
 B.M. 121.85 CITY STD DUGAN and MAPLE STREET 33.7' W. and 34.3' S. of Both
 B.M. 125.81 R.R. Spike N. face power pole 3. Side MAPLE 10' E. of E.L. CEMARIE GIROLE.



NOTE: Remove existing 8\"/>

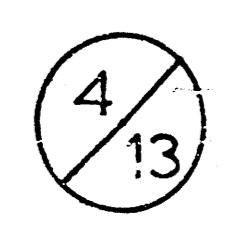
CURVE DATA IS BASED ON EAST B. RAD. 323.10'
 0.74° 00' 00" 05.31994 MIN/FT. ARC.

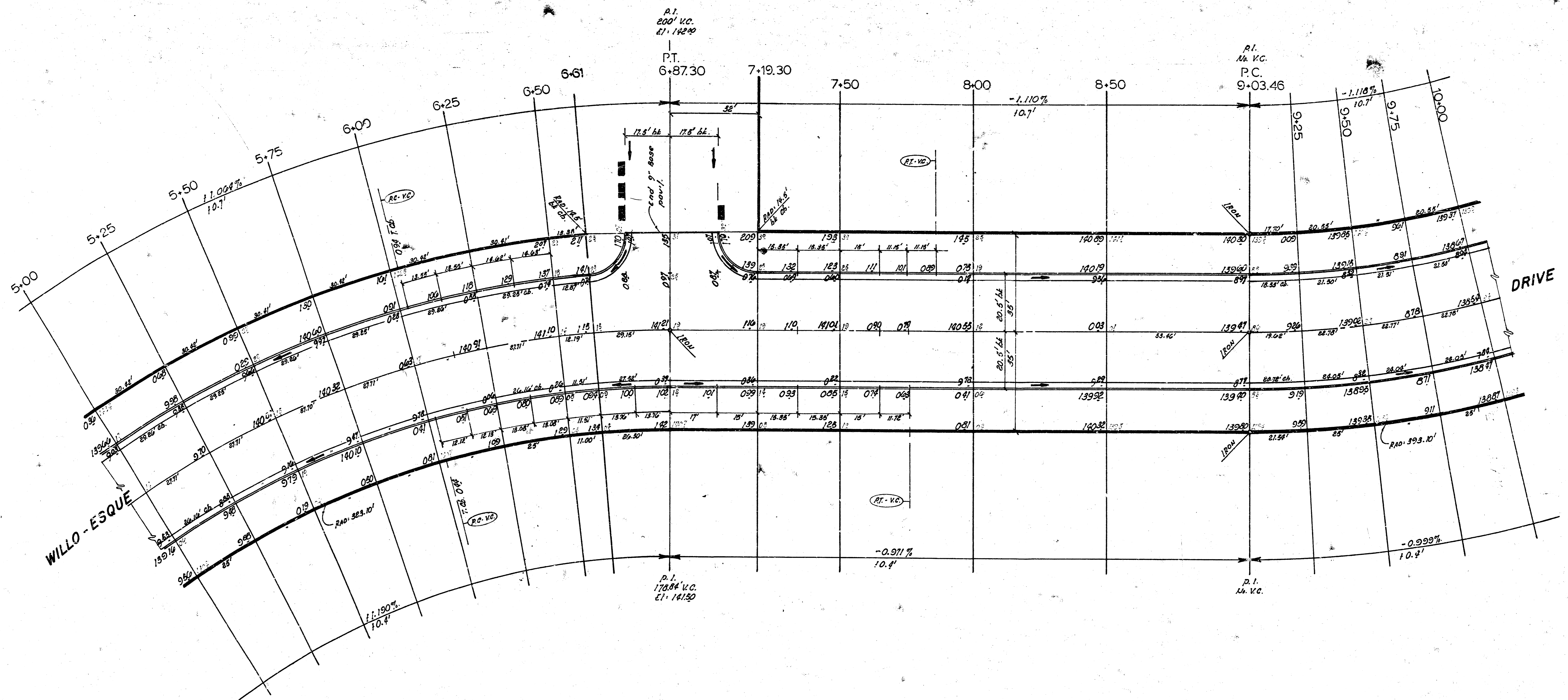
STATION	ARC	CHORD LENGTHS		DEFLECTION	TOTAL DEFLECTION
		S' on I- to E. of S' on I- R- 11.0' 0.0'	S' on I- R- 11.0' 0.0'		
P.C. 2+70					0° 00' 00"
3+00	30.00'	30.08'	35.84'	2° 39' 36"	2° 39' 36"
125	25.00'	25.54'	29.87'	2° 13' 00"	4° 52' 36"
150				"	7° 05' 36"
175				"	9° 18' 36"
4+00				"	11° 31' 36"
125				"	13° 44' 36"
150				"	15° 57' 36"
175				"	18° 10' 36"
5+00				"	20° 23' 36"
125				"	22° 36' 36"
150				"	24° 49' 36"
175				"	27° 02' 36"
6+00				"	29° 15' 36"
125				"	31° 28' 36"
150	25.00'	25.54'	29.87'	2° 13' 00"	33° 41' 36"
175	11.00'	11.23'	13.14'	0° 58' 31"	34° 40' 07"
P.T. 6+57.30	26.30'	26.00'	31.42'	2° 19' 55"	37° 00' 02"

- PROPERTY -		- CITY -	
EXCAVATION	COMP FILL	EXCAVATION	COMP FILL
3,464.8 cu yds	59.1 cu yds	1,022.9 cu yds	59.1 cu yds
110% 346.5	110% 59.1	110% 102.3	110% 59.1
3,811.3 cu yds	65.0 cu yds	1,125.2 cu yds	65.0 cu yds

NOTE: Standard compacted fill or sub-grade treatment to be determined by the field engineer.

WILLO-ESQUE DRIVE
 N.L. MAPLE STREET TO N.L. WILLO-ESQUE FIRST ADDITION.
 41'-Curb & Gutter - Asphaltic Conc
CITY of WICHITA, KANSAS
 (7" Bituminous Base - 2" Asph Conc Wearing Surface.)
 R.W. LINN CITY ENGINEER
 DATE _____ Proj No: DAKC 57200

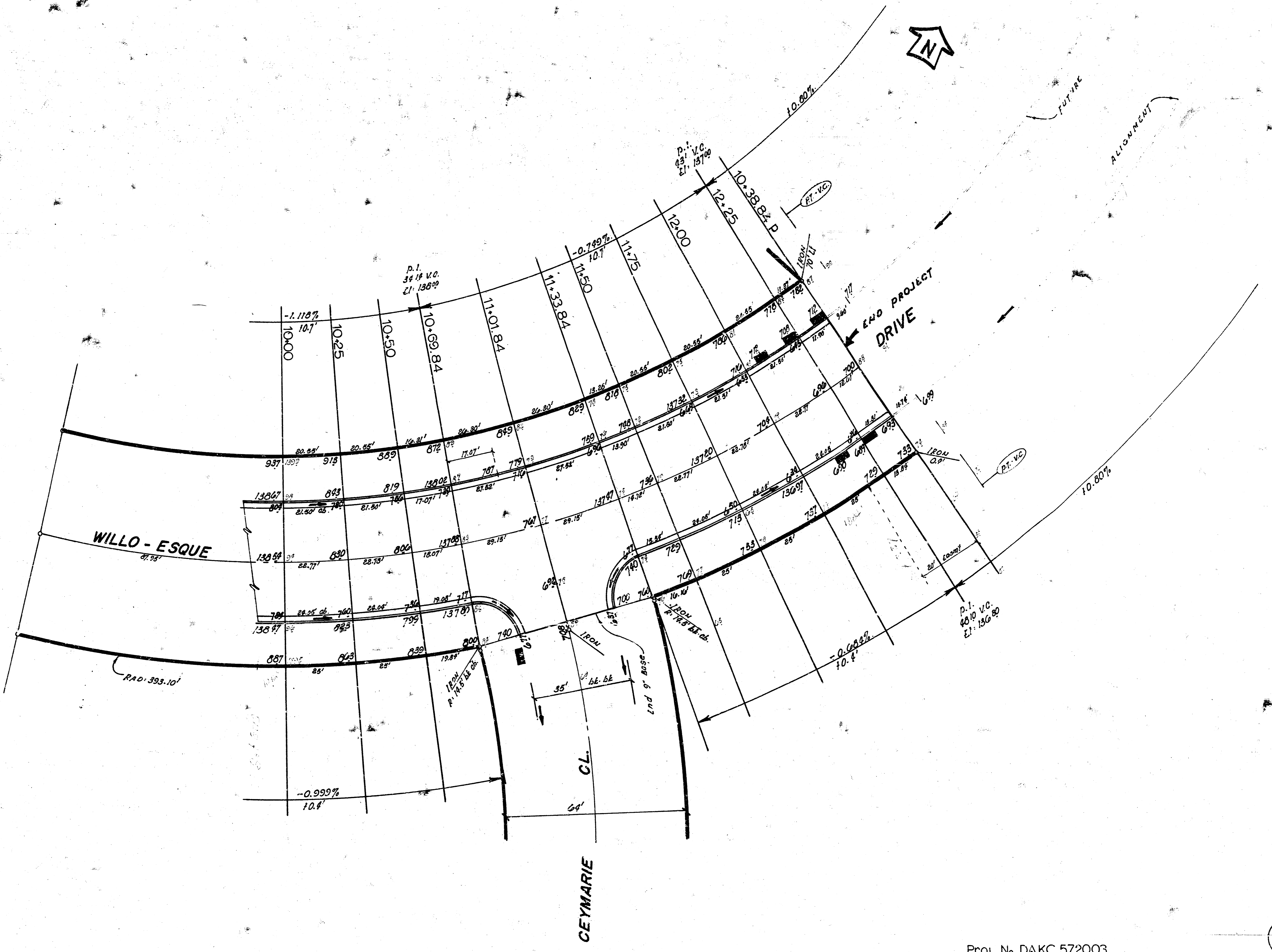




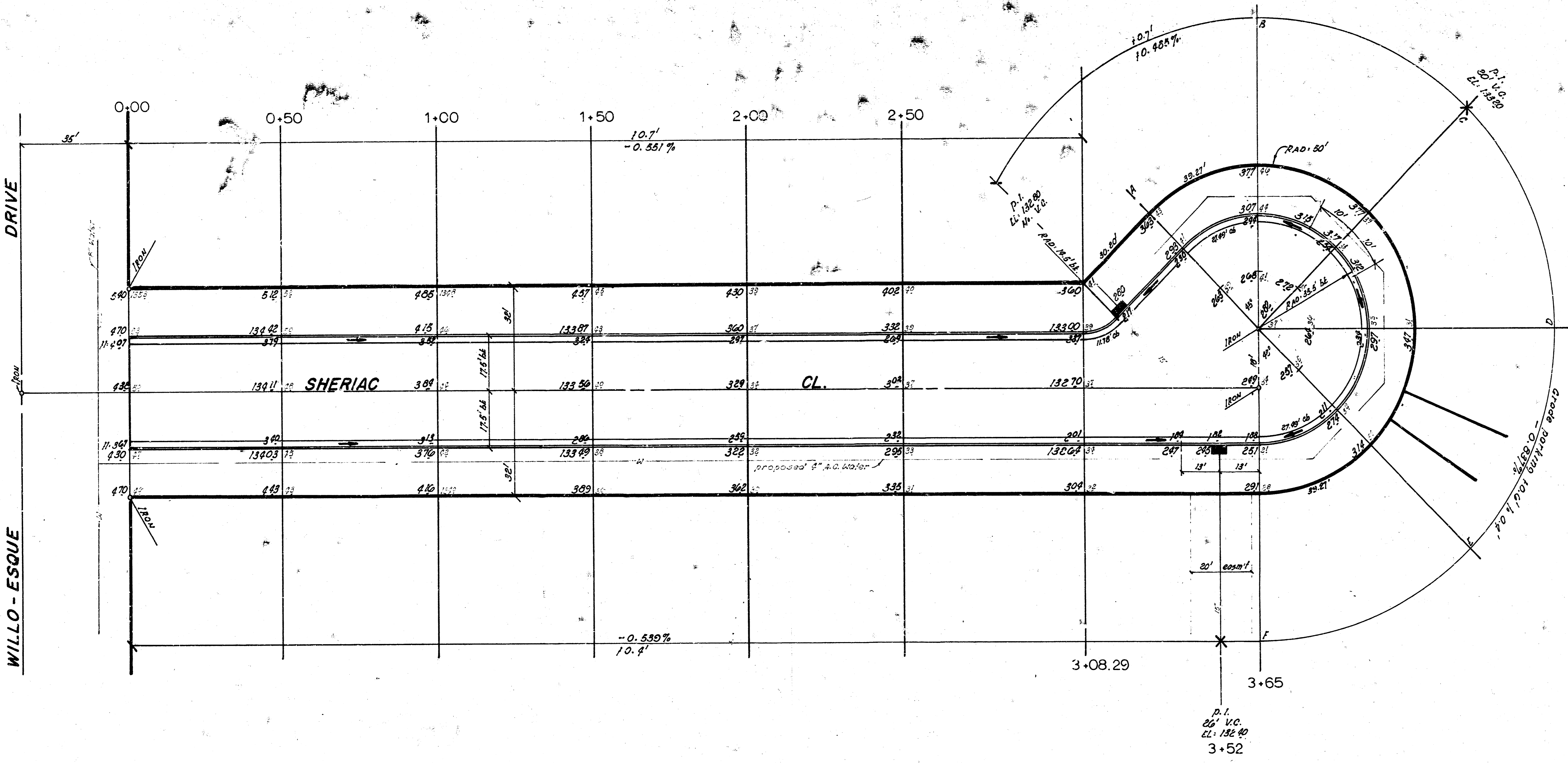


CURVE DATA IS BASED ON SOUTHEAST TB. RAD: 393.10'
 MIN/FT ARC: 04.37261 Δ: 73° 59' 55"

STATION	ARC	CHORD LENGTHS		DEFLEC.	TOTAL DEFLECTION
		S' off. N.E. ab.	S' off. N.S.E. ab.		
P.C. 9103.46					0° 00' 00"
125	21.84'	18.08'	21.15'	1° 38' 11"	1° 38' 11"
150	25.00'	20.99'	24.55'	1° 49' 19"	3° 28' 30"
175					5° 18' 49"
10+00					7° 02' 08"
125					8° 51' 27"
150	25.00'	20.99'	24.55'	1° 49' 19"	10° 40' 46"
10+69.84	19.84'	16.06'	19.48'	1° 26' 45"	12° 07' 31"
11+01.84	32.00'	26.80'	31.42'	2° 19' 55"	14° 27' 26"
11+33.84	32.00'	26.80'	31.42'	2° 19' 55"	16° 47' 21"
150	14.10'	13.57'	15.87'	1° 10' 40"	17° 58' 01"
175	25.00'	20.99'	24.55'	1° 49' 19"	19° 47' 20"
12+00					21° 36' 39"
125	25.00'	20.99'	24.55'	1° 49' 19"	23° 25' 29"
12+38.84	13.84'	11.62'	13.89'	1° 00' 31"	24° 26' 29"



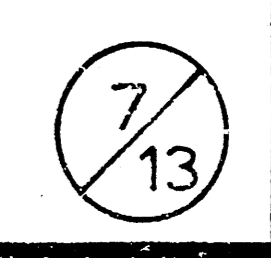
END PROJECT

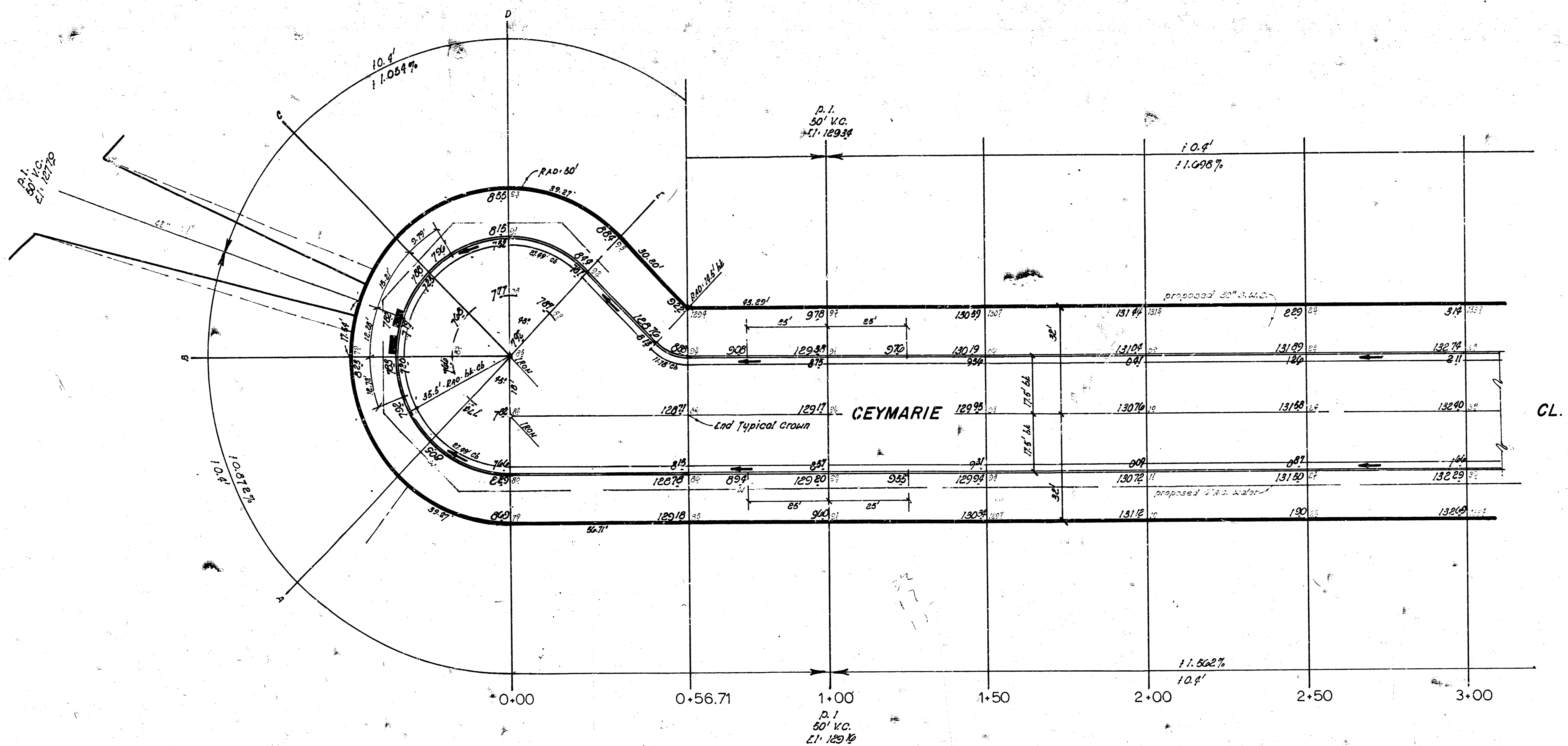


PROPERTY

EXCAVATION		COMP. FILL	
1.008.8	Cu Yds	3.0	Cu Yds
100.9		3	
1,109.7	Cu Yds	3.3	Cu Yds

SHERIAC CIRCLE
 E.L. WILLO-ESQUE DRIVE To and
 incl Cul-De-Sac.
 35'-Curb & Gutter- Asphaltic Con
CITY of WICHITA, KAN.
 (6" Bituminous Base- 2' Asph Concre
 Wearing Surface.)
 R.W. LINN CITY ENGINEER
 DATE _____ Proj No. DAKC57





PROPERTY

EXCAVATION	COMP FILL
1307.8 cu yds	18.0 cu yds
10% 130.8 "	110% 1.9 "
1438.6 cu yds	20.5 cu yds

CEYMARIE CIRCLE
 E.L. WILLO-ESQUE DRIVE To and
 incl Cul-De-Sac.
 35'- Curb & Gutter - Asphaltic Conc
CITY of WICHITA, KANSAS
 (6" Bituminous Base - 2" Asph Concrete
 Wearing Surface.)
 R.W. LINN CITY ENGINEER
 DATE _____ Proj No. DAKC 572003

8/13



CEYMARIE

CURVE DATA IS BASED ON EAST 1/2 RADIUS 315.84'
 $\Delta = 95^\circ 00' 00''$ OS. 44222 MIN/H. AIC.

STATION	ARC	CHORD LENGTHS		DEFLECTION	TOTAL DEFLECTION
		8'00" TO W. CH.	8'00" TO E. CH.		
P.O. 3195.57					0' 00' 00"
175	11.16'	9.14'	10.91'	1° 00' 44"	1° 00' 44"
4100	25.00'	20.48'	24.44'	2° 16' 08"	3° 16' 48"
125				2° 16' 03"	5° 32' 51"
150				2° 16' 04"	7° 48' 55"
175				2° 16' 03"	10° 04' 58"
5100				2° 16' 04"	12° 21' 02"
125				2° 16' 03"	14° 37' 05"
150				2° 16' 03"	16° 53' 08"
175				2° 16' 03"	19° 09' 11"
6100	25.00'	20.48'	24.44'	2° 16' 03"	21° 25' 14"
P.T. 6111.09	11.90'	9.75'	11.63'	1° 04' 46"	22° 30' 00"

