

B.M. = 58.96 R.R. Spike in NW Corner NW Cor. Wilma Terrace Bluffview  
 = 51.22

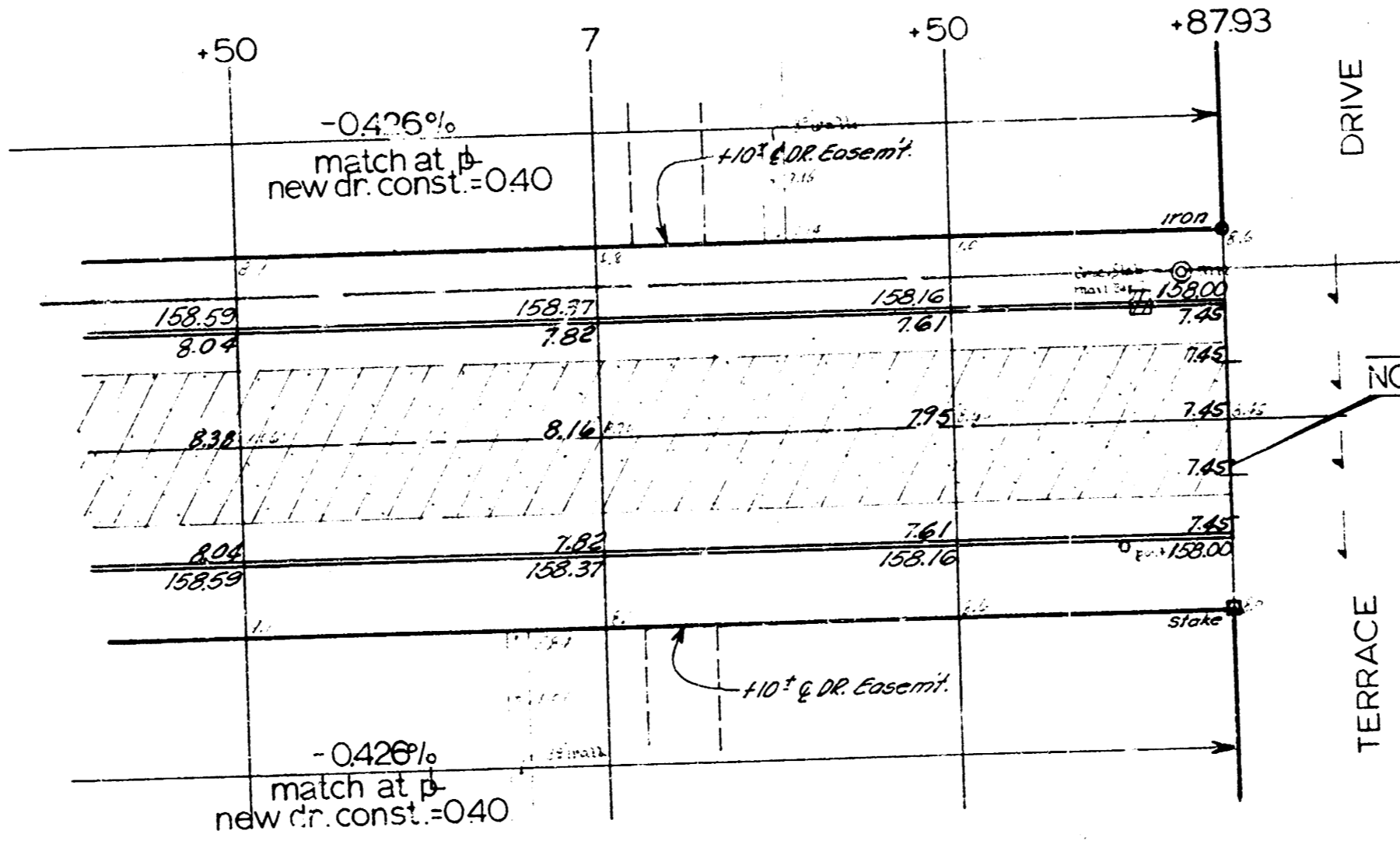
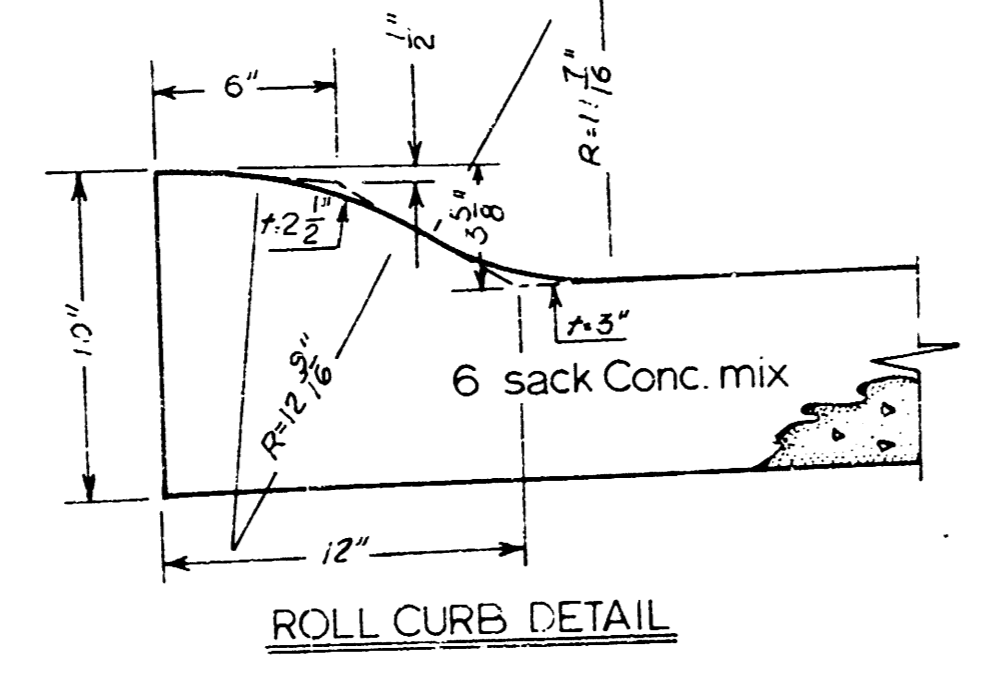
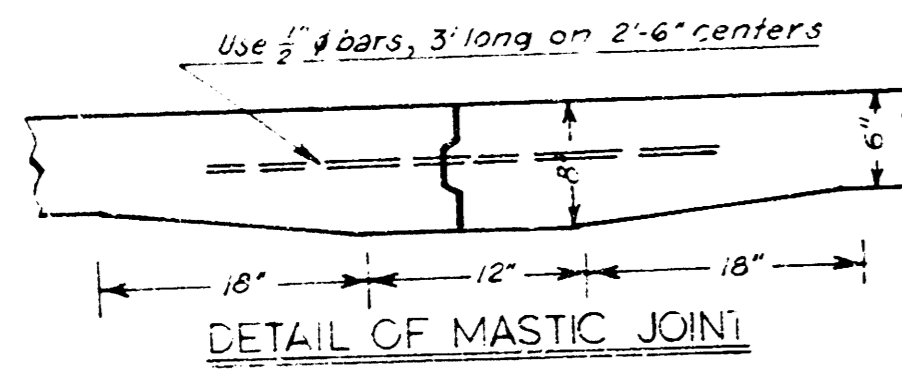
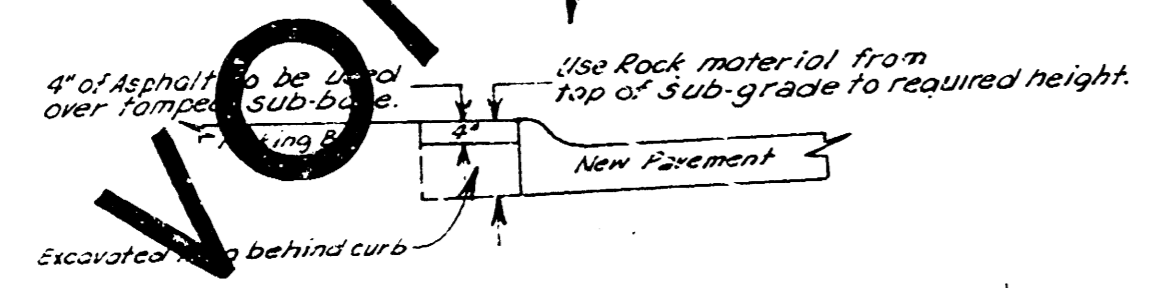
Prime & Seal coat = 1 1/2" thick  
 Stabilized Sand base = 6" thick

NOTE - CB ELEVATIONS ARE TOP OF FULL CURB

Scale: 1"=20'

NOTE TO FIELD ENGR - All of roach walks to remain in place except where they interfere with construction. In this event remove only what is necessary for street construction.

Note - Remove only what is necessary of asphalt surf thru parking bays to allow for concrete forms. Replace patch within curb with asphalt mix. If parking bay is of rock const. repair patch with rock material from sub-base on Terrace Drive (closest to bluffview).



Note - Prime & Seal coat (1 1/2" thick) will be bid as asph. per removed. This quantity has been subtracted from CY excavation.

NOTE - DR/WY'S at DREASEMENTS

Where drivys are not paid for or authorized for assessment - roll curb will be constructed. (see detail) All other dr's will be of standard const. as per driveway ordinance of the City of Wichita.

Excavation Quantities	
prop.	city
550.0	100
785.0	100
785.0	100

ORIGINAL PLAN REVISED 5-15-62	
WILMA STREET	
E.L. Bluffview Dr.	to W.L. Terrace Dr.
30' Conc. Roll curb	
Dept. of Public Works - Engineering Division	
CITY OF WICHITA, KANSAS	
W.E. Smith	City Engineer
Date: APRIL 1962	Proj. No. C11-64

