

APPROVED AS NOTED  
BY CITY ENGINEER OF WICHITA

PAVING *Julianne Kallonen 4-4-02*

NOTE TO CONTRACTOR

INSPECTION AND TESTING FOR THIS PROJECT IS TO BE PROVIDED BY A LICENSED CONSULTING ENGINEERING FIRM UNDER CONTRACT WITH THE OWNER/DEVELOPER. SAID INSPECTION TO BE IN ACCORDANCE WITH THE CITY OF WICHITA STANDARD CONSTRUCTION ENGINEERING PRACTICES AND CERTIFIED BY A LICENSED PROFESSIONAL ENGINEER. NO WORK SHALL BE PERFORMED IN DEDICATED EASEMENTS OR THE PUBLIC RIGHT-OF-WAY BY THE CONTRACTOR WITHOUT SUCH INSPECTION NOR SHALL ANY WORK BE COMMENCED IN DEDICATED EASEMENTS OR PUBLIC RIGHT-OF-WAY WITHOUT WRITTEN AUTHORIZATION BY THE CITY ENGINEER.

GENERAL NOTES

- UNLESS SHOWN OR STATED OTHERWISE ON THESE DRAWINGS, MATERIALS AND CONSTRUCTION SHALL BE IN ACCORDANCE WITH CITY OF WICHITA CONCRETE PAVEMENT AND ASPHALTIC CONCRETE PAVEMENT SPECIFICATIONS.
  - THE CONTRACTOR SHALL BE RESPONSIBLE FOR PRESERVING PROPERTY IRONS. THE CONTRACTOR WILL BE REQUIRED TO RE-ESTABLISH ANY PROPERTY IRONS WHICH ARE DAMAGED OR DESTROYED BY HIS CONSTRUCTION OPERATIONS. SUCH IRONS SHALL BE RE-ESTABLISHED BY A LICENSED LAND SURVEYOR IN ACCORDANCE WITH STATE LAWS.
  - TRANSITION CURBS FROM FULL HEIGHT COMBINATION CURB AND GUTTER TO ROLL TYPE COMBINATION CURB AND GUTTER IS TO BE PAID AS BID FOR LINEAL FEET COMBINED CURB AND GUTTER (3 5/8" ROLL).
  - EXISTING UTILITIES AND THEIR LOCATIONS, AS SHOWN ON THE PLANS REPRESENT THE BEST INFORMATION OBTAINABLE FOR DESIGN. LOCATION INFORMATION HAS BEEN OBTAINED FROM THE VARIOUS UTILITY COMPANIES AND IS EITHER FROM COMPANY RECORD DRAWINGS OR COMPANY PROVIDED FIELD LOCATIONS. THE PLAN LOCATIONS SHOWN ARE NOT GUARANTEED. ADDITIONAL EXISTING UTILITIES MAY ALSO BE ENCOUNTERED.
  - CONTRACTOR WILL BE REQUIRED TO PROVIDE A MINIMUM ADVANCE NOTICE OF FORTY-EIGHT (48) HOURS TO UTILITY COMPANIES PRIOR TO STARTING ANY EXCAVATION AS FOLLOWS:  
KANSAS ONE-CALL 1-800-344-7233  
OR 687-2476 (LOCAL WICHITA)
- THE CONTRACTOR MUST NOTIFY THE FOLLOWING IN CASE OF AN EMERGENCY:
- |                                      |                |
|--------------------------------------|----------------|
| SOUTHWESTERN BELL TELEPHONE COMPANY  | 1-800-734-7590 |
| CDX CABLEVISION                      | 262-0661       |
| KG&E (ELECTRIC)                      | 383-8600       |
| KANSAS GAS SERVICE                   | 383-8800       |
| CITY OF WICHITA WATER & SEWER MAINT. | 262-6000       |
| PEOPLES NATURAL GAS                  | 1-800-303-0357 |
- RUBBLE FROM THE REMOVAL OF MISCELLANEOUS STRUCTURES AND EXCESS EXCAVATION WHICH IS TO BE WASTED SHALL BE DISPOSED OF ON SITES TO BE PROVIDED BY THE CONTRACTOR. THESE SITES SHALL BE APPROVED BY THE ENGINEER AS TO SUITABILITY, APPEARANCE AND SITE LOCATION. LOCATIONS THAT, IN THE OPINION OF THE ENGINEER, WILL LEAVE AN UNSIGHTLY APPEARANCE WILL NOT BE APPROVED. ALL DISPOSAL SITES MUST BE APPROVED BY THE KANSAS DEPARTMENT OF HEALTH AND ENVIRONMENT. MATERIAL EITHER STOCKPILED OR DISPOSED OF IN A FLOOD PLAIN WOULD REQUIRE A KANSAS STATE BOARD OF AGRICULTURE PERMIT. ANY MATERIAL DUMPED IN WATERS OF THE UNITED STATES OR WETLANDS IS SUBJECT TO U.S. CORPS OF ENGINEERS PERMITTING REGULATIONS. ANY MATERIAL BURIED OR STOCKPILED BEYOND APPROVED CONSTRUCTION LIMITS WOULD REQUIRE ADDITIONAL ARCHAEOLOGICAL INVESTIGATIONS UNLESS BURIED IN A PREVIOUSLY APPROVED BORROW LOCATION.
  - THIS PROJECT INCLUDES A CERTAIN AMOUNT OF ROLL TYPE CURB CONSTRUCTION. ROLL CURBS SHALL BE DEPRESSED THROUGH ALL DRIVEWAY OPENINGS WHEN SUCH DRIVES ARE CONSTRUCTED AS A PART OF THE PROJECT. NO MORE THAN 2 DRIVES 20 FEET IN WIDTH OR EQUIVALENT COMBINATIONS THEREOF ARE TO BE CONSTRUCTED WITH THIS PROJECT.
  - A SAW CUT OF AT LEAST ONE-HALF THE DEPTH OF THE EXISTING SURFACE COURSE OR ONE-FOURTH THE DEPTH OF THE EXISTING TOTAL PAVEMENT THICKNESS SHALL BE PROVIDED AT LOCATIONS WHERE PROPOSED CONSTRUCTION ADJUTS AN EXISTING SURFACE OR PAVEMENT FOR WHICH PARTIAL REMOVAL OF THAT SURFACE OR PAVEMENT IS REQUIRED. SAW JOINT TO FACILITATE REMOVAL WITHIN THREE (3) FEET OF EXISTING JOINTS WILL NOT BE PERMITTED AND FOR SUCH INSTANCES THE LIMITS OF REMOVAL SHALL EXTEND TO THE EXISTING JOINT. SUCH SAW CUTS WILL NOT BE PAID FOR DIRECTLY AND THIS COST SHALL BE CONSIDERED AS SUBSIDIARY TO THE REMOVAL OF SURFACE OR PAVEMENT.
  - CONTRACTOR SHALL RESEED AND MULCH ALL DISTURBED AREAS. COST SHALL BE CONSIDERED SUBSIDIARY TO SITE RESTORATION.
  - ANY TREE THAT MUST HAVE BRANCHES REMOVED SHALL BE TRIMMED WITH A SHARP INSTRUMENT/TOOL THAT IS INTENDED FOR SUCH OPERATIONS. GAIN APPROVAL FROM MLC BEFORE REMOVING BRANCHES FROM ANY TREE. KNOCKING BRANCHES OFF WITH A BACKHOE OR OTHER SIMILAR MACHINES IS NOT ACCEPTABLE. SEE DETAIL ON SHEET 11.

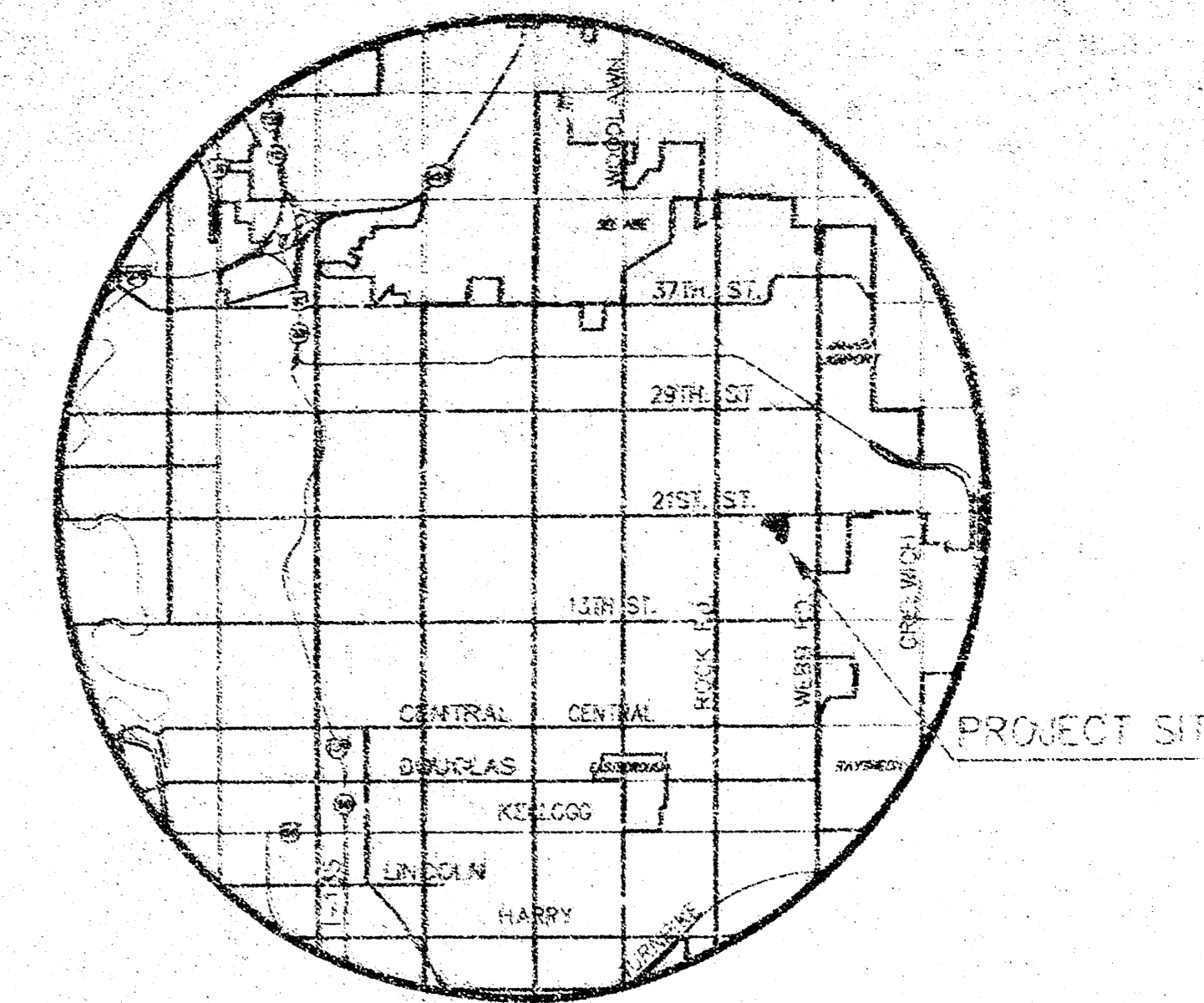
PAVING STREETS IN  
**WILSON FARMS THIRD ADDITION**

AN ADDITION TO THE CITY OF WICHITA  
SEDGWICK COUNTY, KANSAS

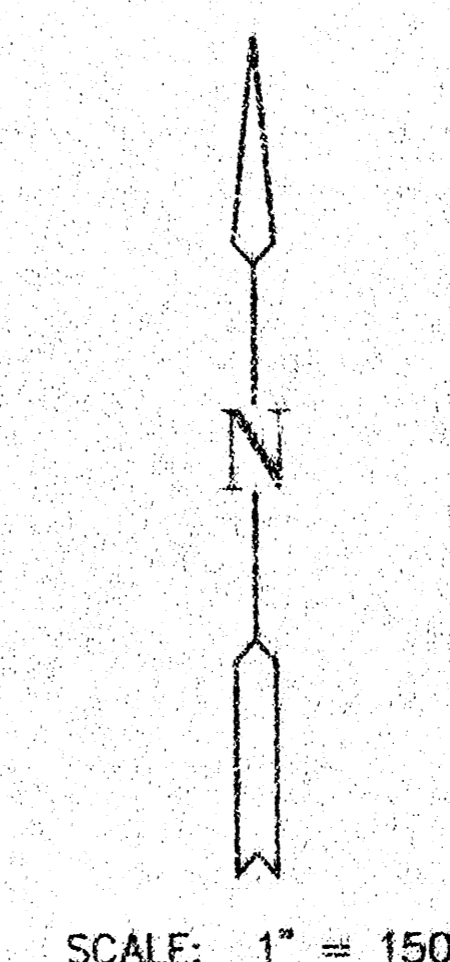
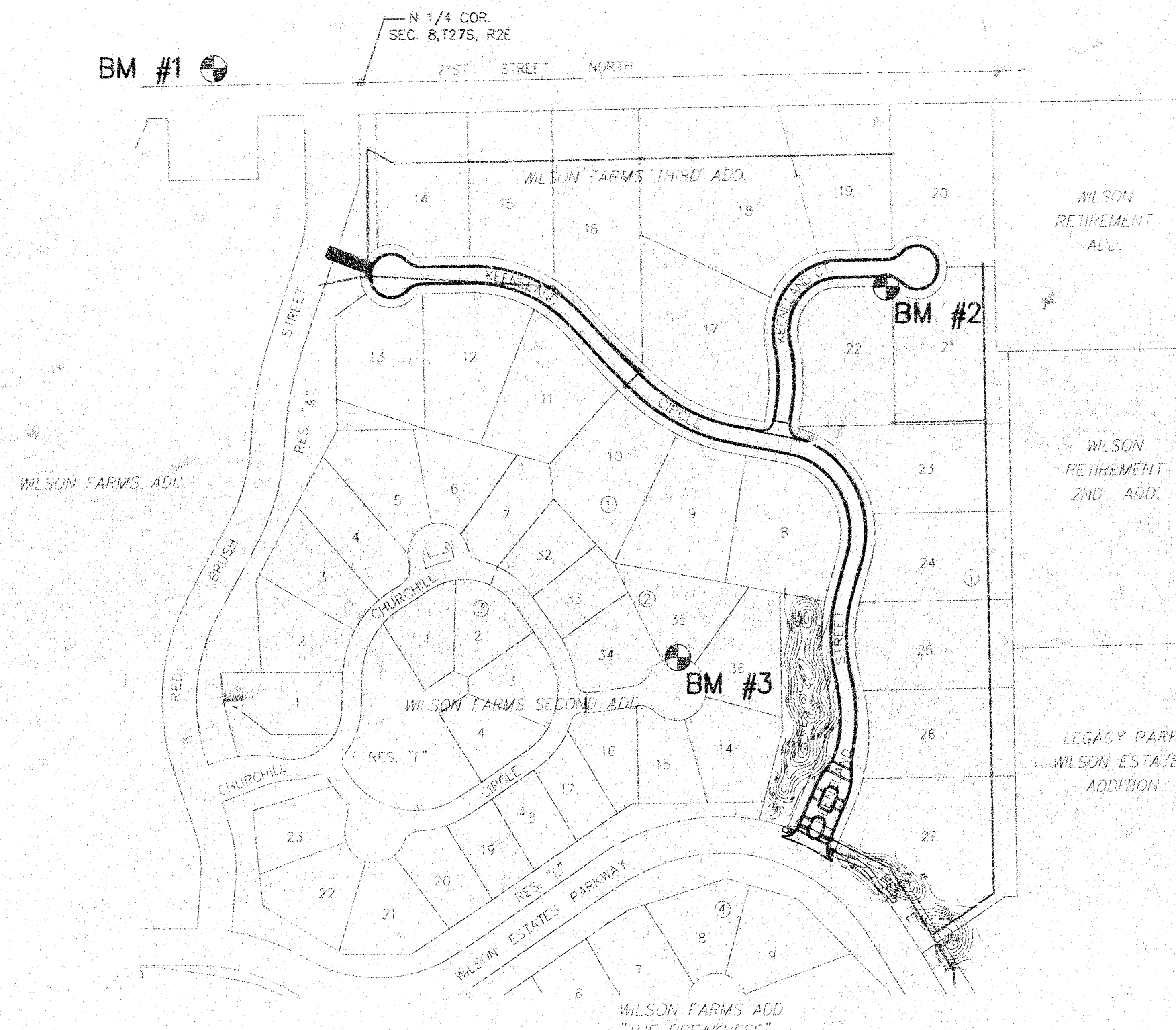
PROJECT NO. 133-PPP

MICHAEL E. LINDEBAK, CITY ENGINEER

OCA 607879



LOCATION MAP



INDEX TO DRAWINGS

SHEET NO.	DESCRIPTION
1	TITLE SHEET
2	TYP. PAVING SECTIONS
3-6	PAVING DETAILS
7-9	KEENELAND STREET/KEENELAND CIRCLE
10	KEENELAND COURT
11	BERM GRADING & ACCESS ROAD
12-14	EROSION CONTROL DETAILS
15-21	CROSS SECTIONS
22	FINAL PLAT

BENCHMARKS

- BM#1 C.O.W. BENCHMARK 1/2 MILE EAST OF ROCK ROAD ON 21ST ST. N.E. COR. HUBGUARD ON R.C.B.C. ELEV. = 190.04
- BM#2 TOP OF 4" POST ± 5' SOUTH OF PC IN STREET R/W ON 3RD ADDITION ELEV. = 205.21
- BM#3 1" CHIT T.C. SW CORNER LOT 35, BLK. 2, WILSON FARMS SECOND ELEV. = 201.99

EARTHWORK SUMMARY

EXCAVATION	2700 C.Y.
LOOSE FILL	7080 C.Y.
COMPACTED FILL	750 C.Y.

\* BERM GRADING SUMMARY

CHT	230 C.Y.
COMPACTED FILL	5160 C.Y.

\* FOR INFORMATION ONLY

NOTE: EXISTING STOCKPILE ON LOTS 9-10 BLK 1 OF THE THIRD ADD. SHALL BE USED PRIOR TO CONTR. BRING MATERIAL IN FROM OFFSITE. STOCKPILE HAS ESTIMATE QTY OF 4000CY. CONTR. SHALL BE RESPONSIBLE FOR MORE EXACT QTY. OFFSITE STOCKPILE MATERIAL AVAILABLE FOR CONTR. USE, IS LOCATED EAST OF WILSON FARMS "THE BREAKNESS".

410015018010202.DWG (REV. 03/01) (PLOT 04/01) (ET)

**WILSON FARMS THIRD ADDITION**  
PROJECT NAME

**PAVING PLANS**  
SHEET TITLE

DFL DESIGN BY:	DM DRAWN BY:	GJA CHECKED BY:
APRIL 2002 DATE	01202_ET DRAWING NAME	1 / 22 SHEET OF

411 N. WEBB ROAD  
WICHITA, KS 67208  
316-684-9800

P:\MKEC\15018010202\DWG\04-01-02\04-01-02.DWG

APPROVED AS NOTED  
BY CITY ENGINEER OF WICHITA

PAVING

NOTE TO CONTRACTOR

INSPECTION AND TESTING FOR THIS PROJECT IS TO BE PROVIDED BY A LICENSED CONSULTING ENGINEERING FIRM UNDER CONTRACT WITH THE OWNER/DEVELOPER. SAID INSPECTION TO BE IN ACCORDANCE WITH THE CITY OF WICHITA STANDARD CONSTRUCTION ENGINEERING PRACTICES AND CERTIFIED BY A LICENSED PROFESSIONAL ENGINEER. NO WORK SHALL BE PERFORMED IN DEDICATED EASEMENTS OR THE PUBLIC RIGHT-OF-WAY BY THE CONTRACTOR WITHOUT SUCH INSPECTION NOR SHALL ANY WORK BE COMMENCED IN DEDICATED EASEMENTS OR PUBLIC RIGHT-OF-WAY WITHOUT WRITTEN AUTHORIZATION BY THE CITY ENGINEER.

### GENERAL NOTES

- UNLESS SHOWN OR STATED OTHERWISE ON THESE DRAWINGS, MATERIALS AND CONSTRUCTION SHALL BE IN ACCORDANCE WITH CITY OF WICHITA CONCRETE PAVEMENT AND ASPHALTIC CONCRETE PAVEMENT SPECIFICATIONS.
- THE CONTRACTOR SHALL BE RESPONSIBLE FOR PRESERVING PROPERTY IRONS. THE CONTRACTOR WILL BE REQUIRED TO RE-ESTABLISH ANY PROPERTY IRONS WHICH ARE DAMAGED OR DESTROYED BY HIS CONSTRUCTION OPERATIONS. SUCH IRONS SHALL BE RE-ESTABLISHED BY A LICENSED LAND SURVEYOR IN ACCORDANCE WITH STATE LAWS.
- TRANSITION CURB FROM FULL HEIGHT COMBINATION CURB AND GUTTER TO ROLL TYPE COMBINATION CURB AND GUTTER IS TO BE PAID AS BID FOR LINEAL FEET COMBINED CURB AND GUTTER (3 5/8" ROLL).
- EXISTING UTILITIES AND THEIR LOCATIONS, AS SHOWN ON THE PLANS REPRESENT THE BEST INFORMATION OBTAINABLE FOR DESIGN. LOCATION INFORMATION HAS BEEN OBTAINED FROM THE VARIOUS UTILITY COMPANIES AND IS EITHER FROM COMPANY RECORD DRAWINGS OR COMPANY PROVIDED FIELD LOCATIONS. THE PLAN LOCATIONS SHOWN ARE NOT GUARANTEED. ADDITIONAL EXISTING UTILITIES MAY ALSO BE ENCOUNTERED.
- CONTRACTOR WILL BE REQUIRED TO PROVIDE A MINIMUM ADVANCE NOTICE OF FORTY-EIGHT (48) HOURS TO UTILITY COMPANIES PRIOR TO STARTING ANY EXCAVATION AS FOLLOWS:  
KANSAS ONE-CALL 1-800-344-7233 OR 687-2470 (LOCAL WICHITA)  
THE CONTRACTOR MUST NOTIFY THE FOLLOWING IN CASE OF AN EMERGENCY:  
SOUTHWESTERN BELL TELEPHONE COMPANY 1-800-734-7590  
COX CABLEVISION 262-0661  
NG&E (ELECTRIC) 393-8600  
KANSAS GAS SERVICE 393-8600  
CITY OF WICHITA WATER & SEWER MAINT. 262-6000  
PEOPLES NATURAL GAS 1-800-303-0357
- RUBBLE FROM THE REMOVAL OF MISCELLANEOUS STRUCTURES AND EXCESS EXCAVATION WHICH IS TO BE WASTED SHALL BE DISPOSED OF ON SITES TO BE PROVIDED BY THE CONTRACTOR. THESE SITES SHALL BE APPROVED BY THE ENGINEER AS TO SUITABILITY, APPEARANCE AND SITE LOCATION. LOCATIONS THAT, IN THE OPINION OF THE ENGINEER WILL LEAVE AN UNSIGHTLY APPEARANCE WILL NOT BE APPROVED. ALL DISPOSAL SITES MUST BE APPROVED BY THE KANSAS DEPARTMENT OF HEALTH AND ENVIRONMENT. MATERIAL EITHER STOCKPILED OR DISPOSED OF IN A FLOOD PLAIN WOULD REQUIRE A KANSAS STATE BOARD OF AGRICULTURE PERMIT. ANY MATERIAL DUMPED IN WATERS OF THE UNITED STATES OR WETLANDS IS SUBJECT TO U.S. CORPS OF ENGINEERS PERMITTING REGULATIONS. ANY MATERIAL BURIED OR STOCKPILED BEYOND APPROVED CONSTRUCTION LIMITS WOULD REQUIRE ADDITIONAL ARCHAEOLOGICAL INVESTIGATIONS UNLESS BURIED IN A PREVIOUSLY APPROVED BORROW LOCATION.
- THIS PROJECT INCLUDES A CERTAIN AMOUNT OF ROLL TYPE CURB CONSTRUCTION. ROLL CURBS SHALL BE DEPRESSED THROUGH ALL DRIVEWAY OPENINGS WHEN SUCH DRIVES ARE CONSTRUCTED AS A PART OF THE PROJECT. NO MORE THAN 2 DRIVES 20 FEET IN WIDTH OR EQUIVALENT COMBINATIONS THEREOF ARE TO BE CONSTRUCTED WITH THIS PROJECT.
- A SAW CUT OF AT LEAST ONE-HALF THE DEPTH OF THE EXISTING SURFACE COURSES OR ONE-FOURTH THE DEPTH OF THE EXISTING TOTAL PAVEMENT THICKNESS SHALL BE PROVIDED AT LOCATIONS WHERE PROPOSED CONSTRUCTION ADJUTS AN EXISTING SURFACE OR PAVEMENT FOR WHICH PARTIAL REMOVAL OF THAT SURFACE OR PAVEMENT IS REQUIRED. SAW CUTS TO FACILITATE REMOVAL WITHIN THREE (3) FEET OF EXISTING JOINTS WILL NOT BE PERMITTED AND FOR SUCH INSTANCES THE LIMITS OF REMOVAL SHALL EXTEND TO THE EXISTING JOINT. SUCH SAW CUTS WILL NOT BE PAID FOR DIRECTLY AND THIS COST SHALL BE CONSIDERED AS SUBSIDIARY TO THE REMOVAL OF SURFACE OR PAVEMENT.
- CONTRACTOR SHALL RESEED AND MULCH ALL DISTURBED AREAS. COST SHALL BE CONSIDERED SUBSIDIARY TO SITE RESTORATION.
- ANY TREE THAT MUST HAVE BRANCHES REMOVED SHALL BE TRIMMED WITH A SHARP INSTRUMENT/TOOL THAT IS INTENDED FOR SUCH OPERATIONS. GAIN APPROVAL FROM MKEC BEFORE REMOVING BRANCHES FROM ANY TREE. KNOCKING BRANCHES OFF WITH A BACKHOE OR OTHER SIMILAR MACHINES IS NOT ACCEPTABLE. SEE DETAIL ON SHEET 11.

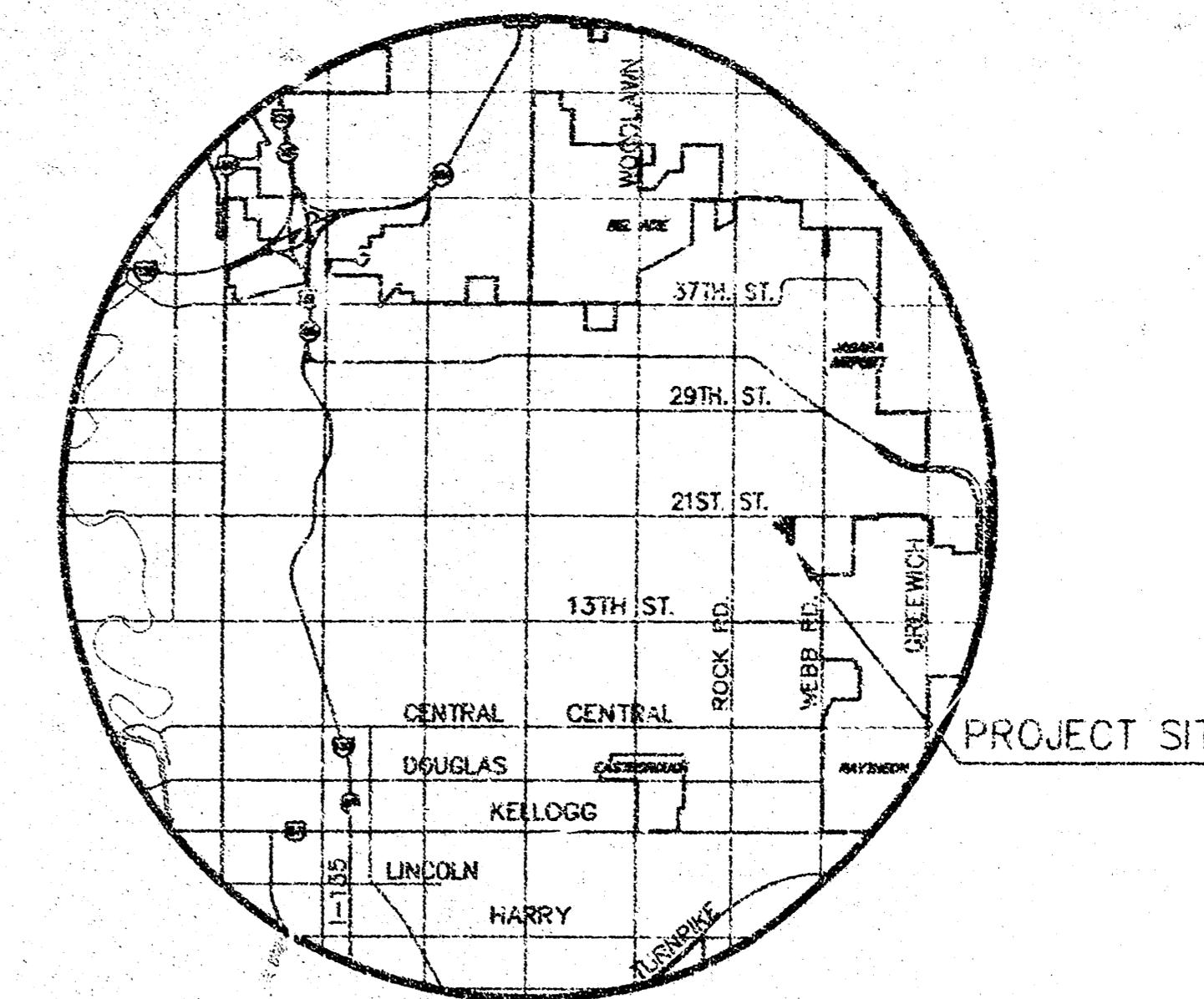
# PAVING STREETS IN WILSON FARMS THIRD ADDITION

AN ADDITION TO THE CITY OF WICHITA  
SEDGWICK COUNTY, KANSAS

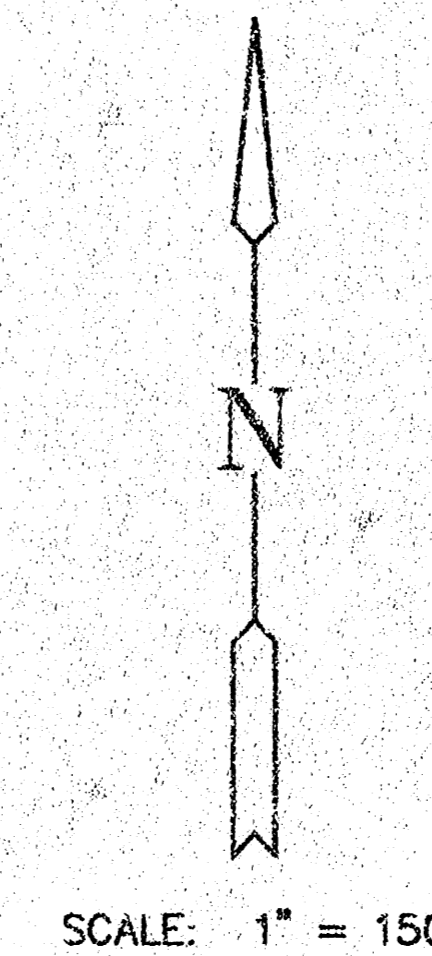
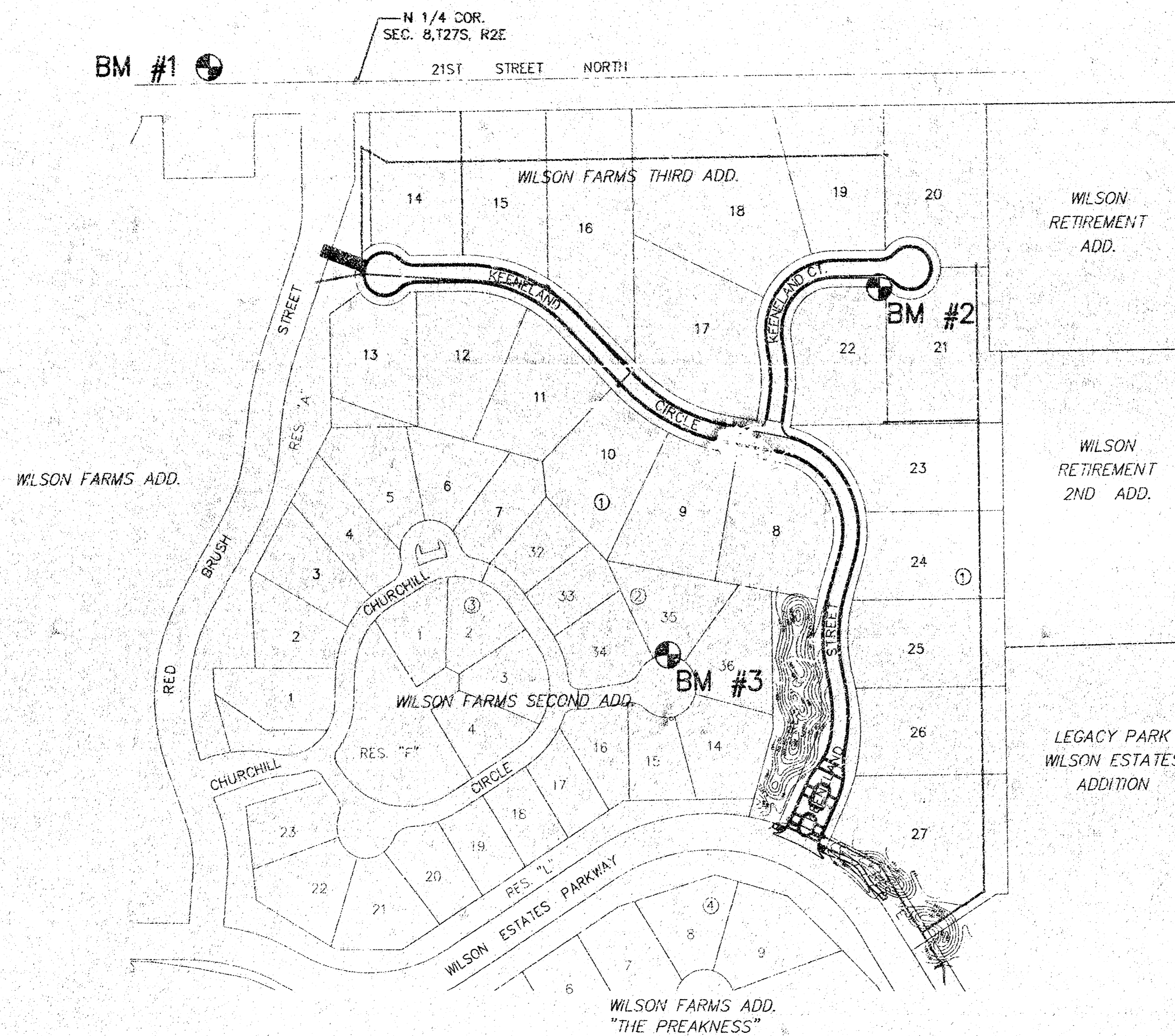
PROJECT NO. 133-PP P

MICHAEL E. LINDEBAK, CITY ENGINEER

OCA 607879



LOCATION MAP



SCALE: 1" = 150'

### INDEX TO DRAWINGS

SHEET NO.	DESCRIPTION
1	TITLE SHEET
2	TYP. PAVING SECTIONS
3-6	PAVING DETAILS
7-9	KEENELAND STREET/KEENELAND CIRCLE
10	KEENELAND COURT
11	BERM GRADING & ACCESS ROAD
12-14	EROSION CONTROL DETAILS
15-21	CROSS SECTIONS
22	FINAL PLAT

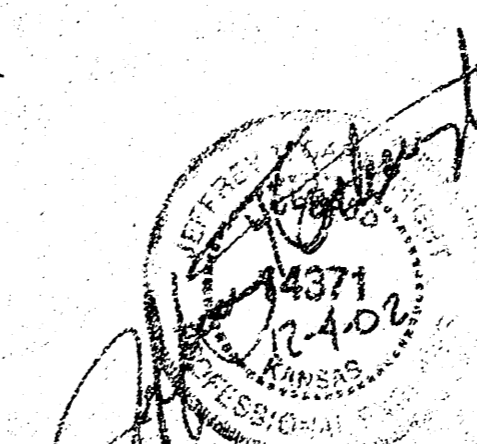
### BENCHMARKS

- BM#1 C.O.W. BENCHMARK 1/2 MILE EAST OF ROCK ROAD ON 21ST ST. N.E. COR. HUBBARD ON R.C.B.C. ELEV. = 190.04
- BM#2 TOP OF "T" POST ± 5' SOUTH OF PC IN STREET R/W ON 3RD ADDITION ELEV. = 205.21
- BM#3 T/CUT T.C. SW CORNER LOT 35, BLK. 2, WILSON FARMS SECOND ADDITION ELEV. = 201.99

EARTHWORK SUMMARY	
EXCAVATION	2700 C.Y.
LOOSE FILL	2080 C.Y.
COMPACTED FILL	750 C.Y.
* BERM GRADING SUMMARY	
CUT	230 C.Y.
COMPACTED FILL	5160 C.Y.

\* FOR INFORMATION ONLY

NOTE: EXISTING STOCKPILE ON LOTS 9-10 BLK 1 OF THE THIRD ADD. SHALL BE USED PRIOR TO CONTR. BRING MATERIAL IN FROM OFFSITE. STOCKPILE HAS ESTIMATE QTY OF 4000CY. CONTR. SHALL BE RESPONSIBLE FOR MORE EXACT QTY. OFFSITE STOCKPILE MATERIAL AVAILABLE FOR CONTR. USE, IS LOCATED EAST OF WILSON FARMS "THE PRAEKNESS".



AS-BUILT 4-DEC-02

**MKEC**  
ENGINEERING CONSULTANTS

411 N. WEBB ROAD  
WICHITA, KS 67206  
316-984-9600

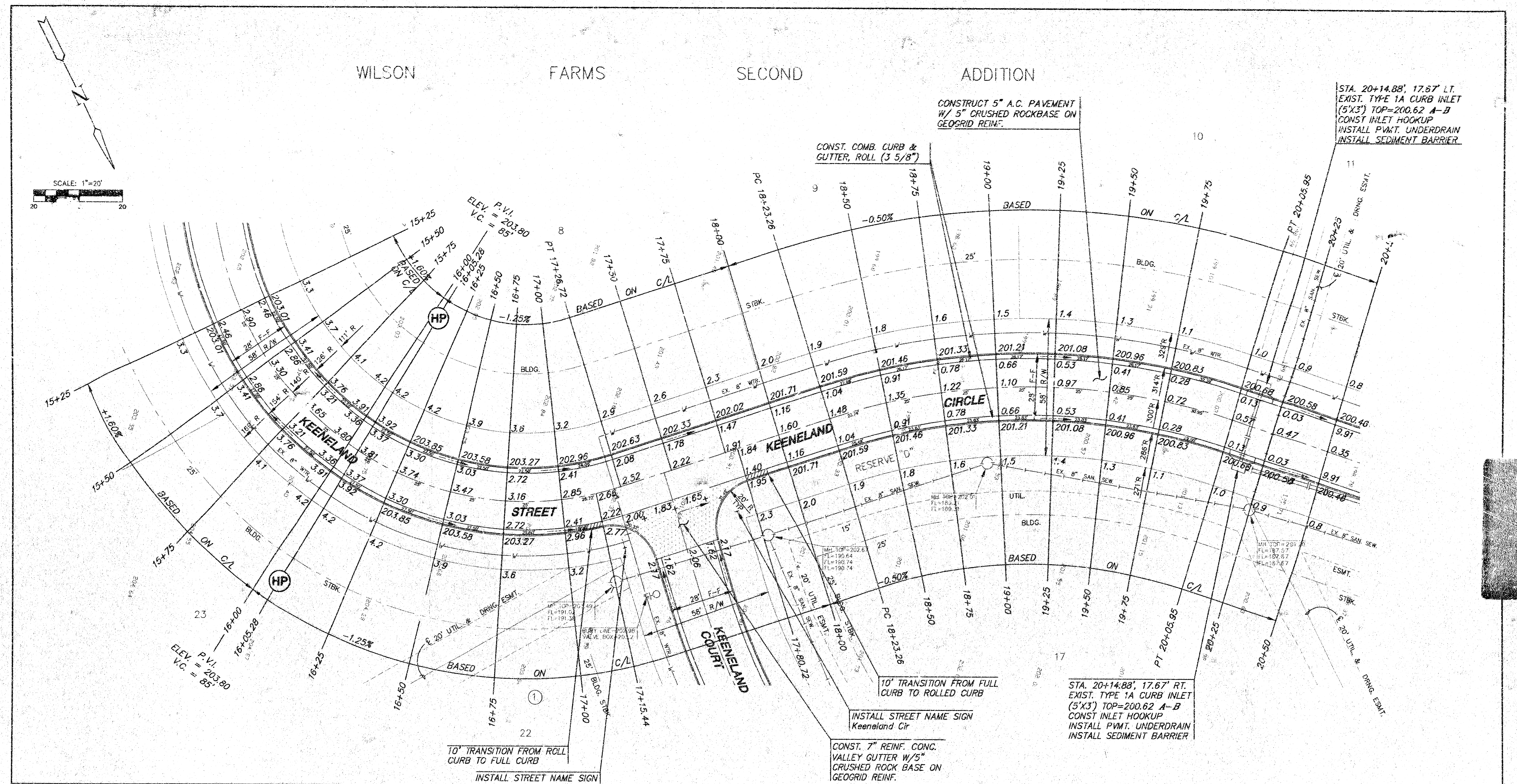
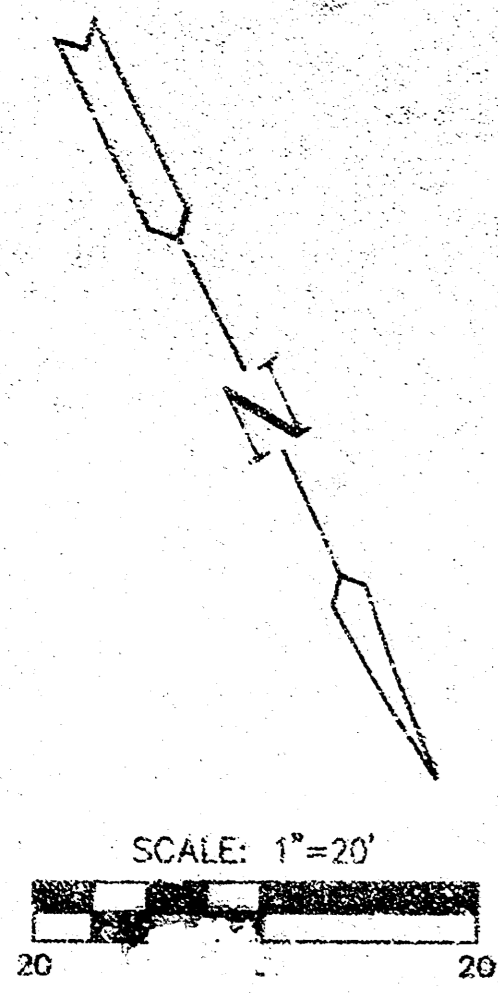
**WILSON FARMS THIRD ADDITION**  
PROJECT NAME

**PAVING PLANS**  
SHEET TITLE

DFL DESIGN BY:	DM DRAWN BY:	GJA CHECKED BY:
APRIL 2002 DATE	01202_ET DRAWING NAME	1 / 22 SHEET OF



WILSON FARMS SECOND ADDITION

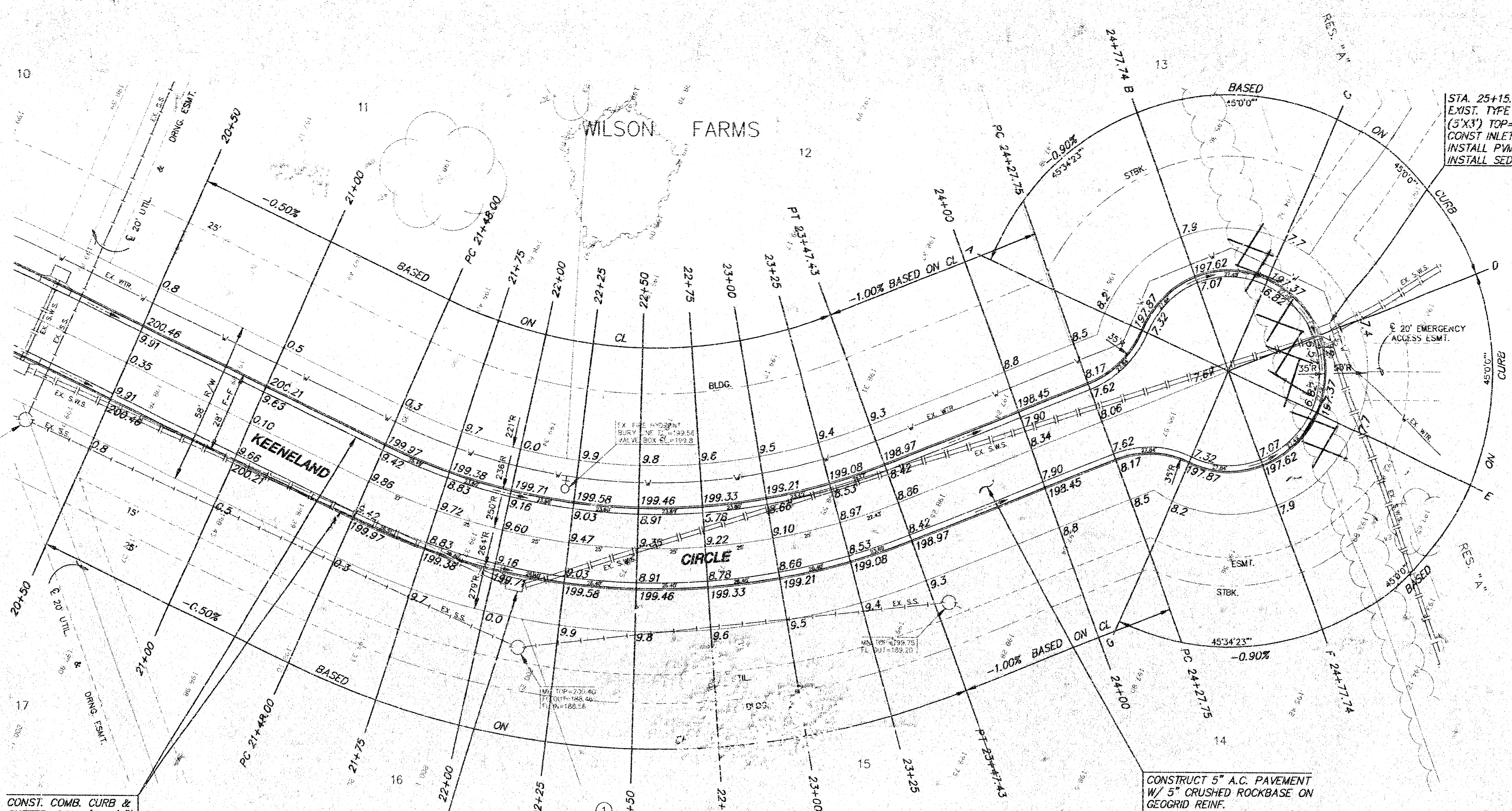


CURVE TABLE

$\Delta = 97^{\circ}15'35''$   $R = 140.00'$   $T = 158.97'$   $L = 237.65'$   $LC = 210.13'$

CURVE DATA BASED ON CENTERLINE  $\Delta/2 = 48^{\circ}37'47''$

STATION	ARC	CHORD LENGTH		DEFLECTION	TOTAL DEFLECTION
		14' Off LtCb	14' Off RtCb		
14+85.07	-	-	-	00'00"00"	00'00"00"
15+00.00	15.93'	9.13'	12.72'	02'14"12"	02'14"12"
15+25.00	25.00'	20.87'	29.07'	05'06"57"	07'21"08"
15+50.00	25.00'	20.87'	29.07'	05'06"57"	12'28'05"
15+75.00	25.00'	20.87'	29.07'	05'06"57"	17'35'01"
16+00.00	25.00'	20.87'	29.07'	05'06"57"	22'41'58"
16+25.00	25.00'	20.87'	29.07'	05'06"57"	27'48'54"
16+50.00	25.00'	20.87'	29.07'	05'06"57"	32'55'51"
16+75.00	25.00'	20.87'	29.07'	05'06"57"	38'02'47"
17+00.00	25.00'	20.87'	29.07'	05'06"57"	43'09'44"
17+25.00	25.00'	20.87'	29.07'	05'06"57"	48'16'40"
17+50.00	25.00'	20.87'	29.07'	05'06"57"	53'23'37"
17+75.00	25.00'	20.87'	29.07'	05'06"57"	58'30'34"
18+00.00	25.00'	20.87'	29.07'	05'06"57"	63'37'31"
18+25.00	25.00'	20.87'	29.07'	05'06"57"	68'44'28"
18+50.00	25.00'	20.87'	29.07'	05'06"57"	73'51'25"
18+75.00	25.00'	20.87'	29.07'	05'06"57"	78'58'22"
19+00.00	25.00'	20.87'	29.07'	05'06"57"	84'05'19"
19+25.00	25.00'	20.87'	29.07'	05'06"57"	89'12'16"
19+50.00	25.00'	20.87'	29.07'	05'06"57"	94'19'13"
19+75.00	25.00'	20.87'	29.07'	05'06"57"	99'26'10"
20+00.00	25.00'	20.87'	29.07'	05'06"57"	104'33'07"
20+25.00	25.00'	20.87'	29.07'	05'06"57"	109'40'04"
20+50.00	25.00'	20.87'	29.07'	05'06"57"	114'47'01"
20+75.00	25.00'	20.87'	29.07'	05'06"57"	119'53'98"
21+00.00	25.00'	20.87'	29.07'	05'06"57"	125'00'95"
21+25.00	25.00'	20.87'	29.07'	05'06"57"	130'07'92"
21+50.00	25.00'	20.87'	29.07'	05'06"57"	135'14'89"
21+75.00	25.00'	20.87'	29.07'	05'06"57"	140'21'86"
22+00.00	25.00'	20.87'	29.07'	05'06"57"	145'28'83"
22+25.00	25.00'	20.87'	29.07'	05'06"57"	150'35'80"
22+50.00	25.00'	20.87'	29.07'	05'06"57"	155'42'77"
22+75.00	25.00'	20.87'	29.07'	05'06"57"	160'49'74"
23+00.00	25.00'	20.87'	29.07'	05'06"57"	165'56'71"
23+25.00	25.00'	20.87'	29.07'	05'06"57"	171'03'68"
23+50.00	25.00'	20.87'	29.07'	05'06"57"	176'10'65"
23+75.00	25.00'	20.87'	29.07'	05'06"57"	181'17'62"
24+00.00	25.00'	20.87'	29.07'	05'06"57"	186'24'59"
24+25.00	25.00'	20.87'	29.07'	05'06"57"	191'31'56"
24+50.00	25.00'	20.87'	29.07'	05'06"57"	196'38'53"
24+75.00	25.00'	20.87'	29.07'	05'06"57"	201'45'50"
25+00.00	25.00'	20.87'	29.07'	05'06"57"	206'52'47"
25+25.00	25.00'	20.87'	29.07'	05'06"57"	211'59'44"
25+50.00	25.00'	20.87'	29.07'	05'06"57"	217'06'41"
25+75.00	25.00'	20.87'	29.07'	05'06"57"	222'13'38"
26+00.00	25.00'	20.87'	29.07'	05'06"57"	227'20'35"
26+25.00	25.00'	20.87'	29.07'	05'06"57"	232'27'32"
26+50.00	25.00'	20.87'	29.07'	05'06"57"	237'34'29"
26+75.00	25.00'	20.87'	29.07'	05'06"57"	242'41'26"
27+00.00	25.00'	20.87'	29.07'	05'06"57"	247'48'23"
27+25.00	25.00'	20.87'	29.07'	05'06"57"	252'55'20"
27+50.00	25.00'	20.87'	29.07'	05'06"57"	258'02'17"
27+75.00	25.00'	20.87'	29.07'	05'06"57"	263'09'14"
28+00.00	25.00'	20.87'	29.07'	05'06"57"	268'16'11"
28+25.00	25.00'	20.87'	29.07'	05'06"57"	273'23'08"
28+50.00	25.00'	20.87'	29.07'	05'06"57"	278'30'05"
28+75.00	25.00'	20.87'	29.07'	05'06"57"	283'37'02"
29+00.00	25.00'	20.87'	29.07'	05'06"57"	288'43'99"
29+25.00	25.00'	20.87'	29.07'	05'06"57"	293'50'96"
29+50.00	25.00'	20.87'	29.07'	05'06"57"	298'57'93"
29+75.00	25.00'	20.87'	29.07'	05'06"57"	304'04'90"
30+00.00	25.00'	20.87'	29.07'	05'06"57"	309'11'87"
30+25.00	25.00'	20.87'	29.07'	05'06"57"	314'18'84"
30+50.00	25.00'	20.87'	29.07'	05'06"57"	319'25'81"
30+75.00	25.00'	20.87'	29.07'	05'06"57"	324'32'78"
31+00.00	25.00'	20.87'	29.07'	05'06"57"	329'39'75"
31+25.00	25.00'	20.87'	29.07'	05'06"57"	334'46'72"
31+50.00	25.00'	20.87'	29.07'	05'06"57"	339'53'69"
31+75.00	25.00'	20.87'	29.07'	05'06"57"	345'00'66"
32+00.00	25.00'	20.87'	29.07'	05'06"57"	350'07'63"
32+25.00	25.00'	20.87'	29.07'	05'06"57"	355'14'60"
32+50.00	25.00'	20.87'	29.07'	05'06"57"	360'21'57"
32+75.00	25.00'	20.87'	29.07'	05'06"57"	365'28'54"
33+00.00	25.00'	20.87'	29.07'	05'06"57"	370'35'51"
33+25.00	25.00'	20.87'	29.07'	05'06"57"	375'42'48"
33+50.00	25.00'	20.87'	29.07'	05'06"57"	380'49'45"
33+75.00	25.00'	20.87'	29.07'	05'06"57"	385'56'42"
34+00.00	25.00'	20.87'	29.07'	05'06"57"	391'03'39"
34+25.00	25.00'	20.87'	29.07'	05'06"57"	396'10'36"
34+50.00	25.00'	20.87'	29.07'	05'06"57"	401'17'33"
34+75.00	25.00'	20.87'	29.07'	05'06"57"	406'24'30"
35+00.00	25.00'	20.87'	29.07'	05'06"57"	411'31'27"
35+25.00	25.00'	20.87'	29.07'	05'06"57"	416'38'24"
35+50.00	25.00'	20.87'	29.07'	05'06"57"	421'45'21"
35+75.00	25.00'	20.87'	29.07'	05'06"57"	426'52'18"
36+00.00	25.00'	20.87'	29.07'	05'06"57"	431'59'15"
36+25.00	25.00'	20.87'	29.07'	05'06"57"	437'06'12"
36+50.00	25.00'	20.87'	29.07'	05'06"57"	442'13'09"
36+75.00	25.00'	20.87'	29.07'	05'06"57"	447'20'06"
37+00.00	25.00'	20.87'	29.07'	05'06"57"	452'27'03"
37+25.00	25.00'	20.87'	29.07'	05'06"57"	457'34'00"
37+50.00	25.00'	20.87'	29.07'	05'06"57"	462'40'97"
37+75.00	25.00'	20.87'	29.07'	05'06"57"	467'47'94"
38+00.00	25.00'	20.87'	29.07'	05'06"57"	472'54'91"
38+25.00	25.00'	20.87'	29.07'	05'06"57"	478'01'88"
38+50.00	25.00'	20.87'	29.07'	05'06"57"	483'08'85"
38+75.00	25.00'	20.87'	29.07'	05'06"57"	488'15'82"
39+00.00	25.00'	20.87'	29.07'	05'06"57"	493'22'79"
39+25.00	25.00'	20.87'	29.07'	05'06"57"	498'29'76"
39+50.00	25.00'	20.87'	29.07'	05'06"57"	503'36'73"
39+75.00	25.00'	20.87'	29.07'	05'06"57"	508'43'70"
40+00.00	25.00'	20.87'	29.07'	05'06"57"	513'50'67"
40+25.00	25.00'	20.87'	29.07'	05'06"57"	518'57'64"
40+50.00	25.00'	20.87'	29.07'	05'06"57"	524'04'61"
40+75.00	25.00'	20.87'	29.07'	05'06"57"	529'11'58"
41+00.00	25.00'	20.87'	29.07'	05'06"57"	534'18'55"
41+25.00	25.00'	20.87'	29.07'	05'06"57"	539'25'52"
41+50.00	25.00'	20.87'	29.07'	05'06"57"	544'32'49"
41+75.00	25.00'	20.87'	29.07'	05'06"57"	549'39'46"
42+00.00	25.00'	20.87'	29.07'	05'06"57"	554'46'43"
42+25.00	25.00'	20.87'	29.07'	05'06"57"	559'53'40"
42+50.00	25.00'	20.87'	29.07'	05'06"57"	565'00'37"
42+75.00	25.00'	20.87'	29.07'	05'06"57"	570'07'34"
43+00.00	25.00'	20.87'	29.07'	05'06"57"	575'14'31"
43+25.00	25.00'	20.87'	29.07'	05'06"57"	580'21'28"
43+50.00	25.00'	20.87'	29.07'	05'06"57"	585'28'25"
43+75.00	25.00'	20.87'	29.07'	05'06"57"	590'35'22"
44+00.00	25.00'	20.87'	29.07'	05'06"57"	595'42'19"
44+25.00	25.00'	20.87'	29.07'	05'06"57"	600'49'16"
44+50.00	25.00'	20.87'	29.07'	05'06"57"	605'56'13"
44+75.00	25.00'	20.87'	29.07'	05'06"57"	611'03'10"
45+00.00	25.00'	20.87'	29.07'	05'06"57"	616'10'07"
45+25.00	25.00'	20.87'	29.07'	05'06"57"	621'17'04"
45+50.00	25.00'	20.87'	29.07'	05'06"57"	626'24'01"
45+75.00	25.00'	20.87'	29.07'	05'06"57"	631'30'98"
46+00.00	25.00'	20.87'	29.07'	05'06"57"	636'37'95"
46+25.00	25.00'	20.87'	29.07'	05'06"57"	641'44'92"
46+50.00	25.00'	20.87'	29.07'	05'06"57"	646'51'89"
46+75.00	25.00'	20.87'	29.07'	05'06"57"	651'58'86"
47+00.00	25.00'	20.87'	29.07'	05'06"57"	657'05'83"
47+25.00	25.00'	20.87'	29.07'	05'06"57"	662'12'80"
47+50.00	25.00'	20.87'	29.07'	05'06"57"	667'19'77"
47+75.00	25.00'	20.87'	29.07'	05'06"57"	672'26'74"
48+00.00	25.00'	20.87'	29.07'	05'06"57"	677'33'71"
48+25.00	25.00'	20.87'	29.07'	05'06"57"	682'40'68"
48+50.00	25.00'	20.87'	29.07'	05'06"57"	687'47'65"
48+75.00	25.00'	20.87'	29.07'	05'06"57"	692'54'62"
49+00.00	25.00'	20.87'	29.07'	05'06"57"	698'01'59"
49+25.00	25.00'	20.87'	29.07'	05'06"57"	703'08'56"
49+50.00	25.00'	20.87'	29.07'	05'06"57"	708'15'53"
49+75.00	25.00'	20.87'	29.07'	05'06"57"	713'22'50"
50+00.00	25.00'	20.87'	29.07'	05'06"57"	718'29'47"
50+25.00	25.00'	20.87'	29.07'	05'06"57"	723'36'44"
50+50.00	25.00'	20.87'	29.07'	05'06"57"	728'43'41"
50+75.00	25.00'	20.87'	29.07'	05'06"57"	733'50'38"
51+00.00	25.00'	20.87'	29.07'	05'06"57"	738'57'35"
51+25.00	25.00'	20.87'	29.07'	05'06"57"	744'04'32"
51+50.00	25.00'	20.87'	29.07'	05'06"57"	749'11'29"
51+75.00	25.00'	20.87'	29.07'	05'06"57"	754'18'26"
52+00.00	25.00'	20.87'	29.07'	05'06"57"	759'25'23"
52+25.00	25.00'	20.87'	29.07'	05'06"57"	764'32'20"
52+50.00	25.00'	20.87'	29.07'	05'06"57"	769'39'17"
52+75.00	25.00'	20.87'	29.07'	05'06"57"	774'46'14"
53+00.00	25.00'	20.87'	29.07'	05'06"57"	779'53'11"
53+25.00	25.00'	20.87'	29.07'	05'06"57"	785'00'08"
53+50.00	25.00'	20.87'	29.07'	05'06"57"	790'07'05"
53+75.00	25.00'	20.87'	29.07'	05'06"57"	795'14'02"
54+00.00	25.00'	20.87'	29.07'	05'06"57"	800'20'99"
54+25.00	25.00'	20.87'	29.07'	05'06"57"	805'27'96"



STA. 25+15.87  
 EXIST. TYPE 1A CURB INLET  
 (5'X3') TOP=197.12 A-B  
 CONST. INLET HOOKUP  
 INSTALL PVMT. UNDERDRAIN  
 INSTALL SEDIMENT BARRIER

CONST. COMB. CURB &  
 GUTTER, ROLL (3 5/8")

STA. 22+08.07, 17.59 RT.  
 EXIST. TYPE 1A CURB INLET  
 (5'X3') TOP=199.67 A-B  
 CONST. INLET HOOKUP  
 INSTALL PVMT. UNDERDRAIN  
 INSTALL SEDIMENT BARRIER

CONSTRUCT 5" A.C. PAVEMENT  
 W/ 5" CRUSHED ROCKBASE ON  
 GEGRID REINF.

**CURVE TABLE**

$\Delta = 45^{\circ}42'22''$   $R = 250.00'$   $T = 105.36'$   $L = 199.43'$   $LC = 194.18'$

CURVE DATA BASED ON CENTERLINE  $\Delta/2 = 22^{\circ}51'11''$

STATION	ARC	CHORD LENGTH		DEFLECTION	TOTAL DEFLECTION
		14' Off LtCb	14' Off RtCb		
21+48.00	-	-	-	00°00'00"	00°00'00"
21+75.00	27.00'	23.98'	30.01'	03°05'38"	03°05'38"
22+00.00	25.00'	22.19'	27.79'	02°51'53"	05°57'32"
22+25.00	25.00'	22.19'	27.79'	02°51'53"	08°49'25"
22+50.00	25.00'	22.19'	27.79'	02°51'53"	11°41'18"
22+75.00	25.00'	22.19'	27.79'	02°51'53"	14°33'11"
23+00.00	25.00'	22.19'	27.79'	02°51'53"	17°25'04"
23+25.00	25.00'	22.19'	27.79'	02°51'53"	20'16'58"
23+50.00	25.00'	22.19'	27.79'	02°51'53"	23°08'51"
24+00.00	22.43'	19.91'	24.93'	00°34'13"	22°51'11"

Def/f<sub>s</sub> = 6.87549 Min.

**SUBDIVISION BENCH MARKS**

NO.	STREET AND STATION	FROM CL	DESCRIPTION	ELEVATIONS
1	KEENELAND CT STA. 10+34.00	14.5' RT	NORTHEAST END OF RETURN AT KEENELAND & KEENELAND CT.	

NOTE: CONTRACTOR SHALL INSTALL SUBDIVISION BENCH MARKS ("FLAT SURVEY MARKERS NO. 8134-08 3" TOP DIAMETER" PROVIDED BY KANSAS BLUE PRINT CO., INC.) COSTS TO BE CONSIDERED SUBSIDIARY TO CONSTRUCTION OF COMBINED CURB AND GUTTER.

NOTE:  
 TOP OF CURB ELEVATIONS SHOWN ARE FOR FULL CURB. CONSTRUCT COMBINED CURB & GUTTER, ROLLED (3 5/8").

**LEGEND**

☒ SIDEWALK REMOVAL

X TREE REMOVAL

+ STREET SIGN & SIGN LOCATION (SEE SIGN ASSEMBLY TABLE FOR TYPE & STATION OF SIGN)

AS-BUILT 4-DEC-02

133 PFP



**WILSON FARMS THIRD ADDITION**  
 PROJECT NAME

**KEENELAND CIRCLE**  
 SHEET TITLE

DESIGN BY: DM DRAWN BY: GJA CHECKED BY: GJA

DATE: APRIL 2002 JOB NO. 01202E3 SHEET/OF 9 / 22