

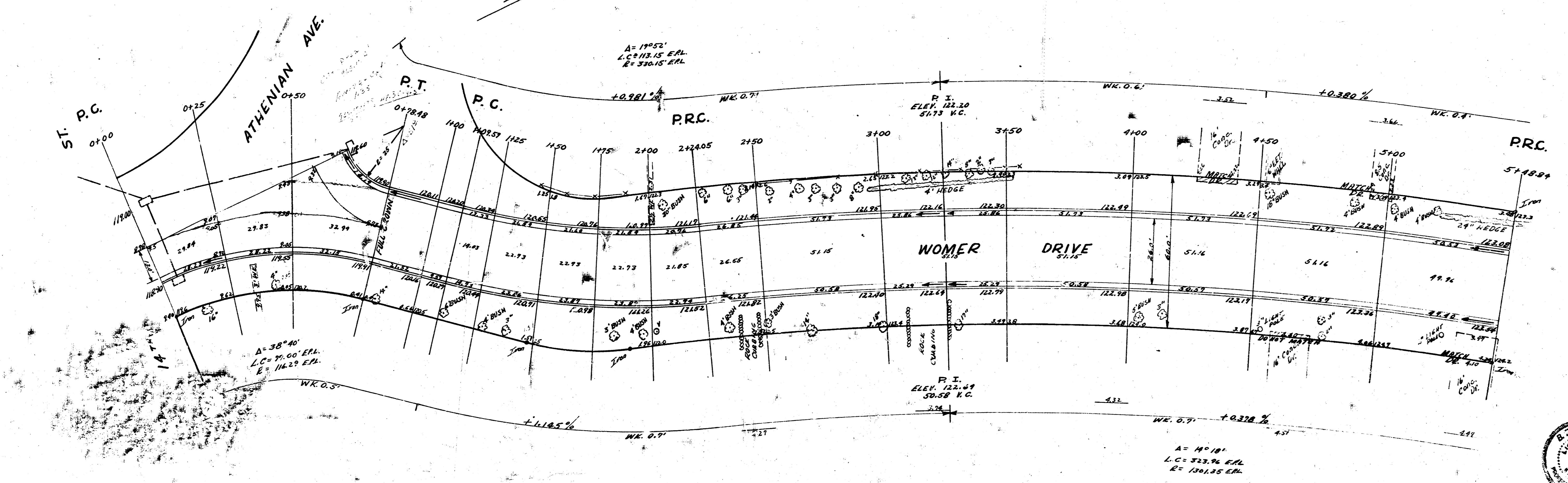
BM 119.18 1/2" D BRIDGE SPIKE N.S. BELL POLE 25.132' AT E LINE OF ATHENIAN  
 BM 121.935 3" N. COR. 14' CONC. STEP 10" / 100' N. ATHENIAN  
 STATIONING 1/2" G.S.E. LINE ON EAST PROP. LINE

CURVE DATA IS BASED ON EAST PROP. LINE R=33016 A=11°53'

STATIONING	CH. OFF. E.C.B.	CH. OFF. W.C.B.	DEF. L.	TOTAL DEF.
1278.37	P.C.			
1285		12.95	1° 20' 20"	1° 20' 30"
1290		24.90	2° 10' 10"	3° 30' 30"
1295		36.85	2° 10' 10"	5° 40' 40"
1300		48.80	2° 10' 10"	7° 50' 50"
1305		60.75	2° 5' 9"	9° 55' 59"
1312.87	P.R.C.			

CURVE DATA IS BASED ON EAST PROP. LINE R=120135 A=11°18'

STATIONING	CH. OFF. E.C.B.	CH. OFF. W.C.B.	DEF. L.	TOTAL DEF.
1312.87	P.C.			
1320.05		26.39	0° 34' 18"	0° 34' 18"
1325		52.79	1° 8' 3"	1° 42' 21"
1330		79.19	1° 6' 3"	2° 48' 24"
1335		105.59	1° 6' 3"	3° 54' 27"
1340		131.99	1° 6' 3"	5° 00' 30"
1345		158.39	1° 6' 3"	6° 06' 33"
1350		184.79	1° 6' 3"	7° 12' 36"
1355		211.19	1° 6' 3"	8° 18' 39"
1362.84	P.R.C.			

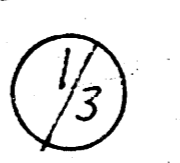


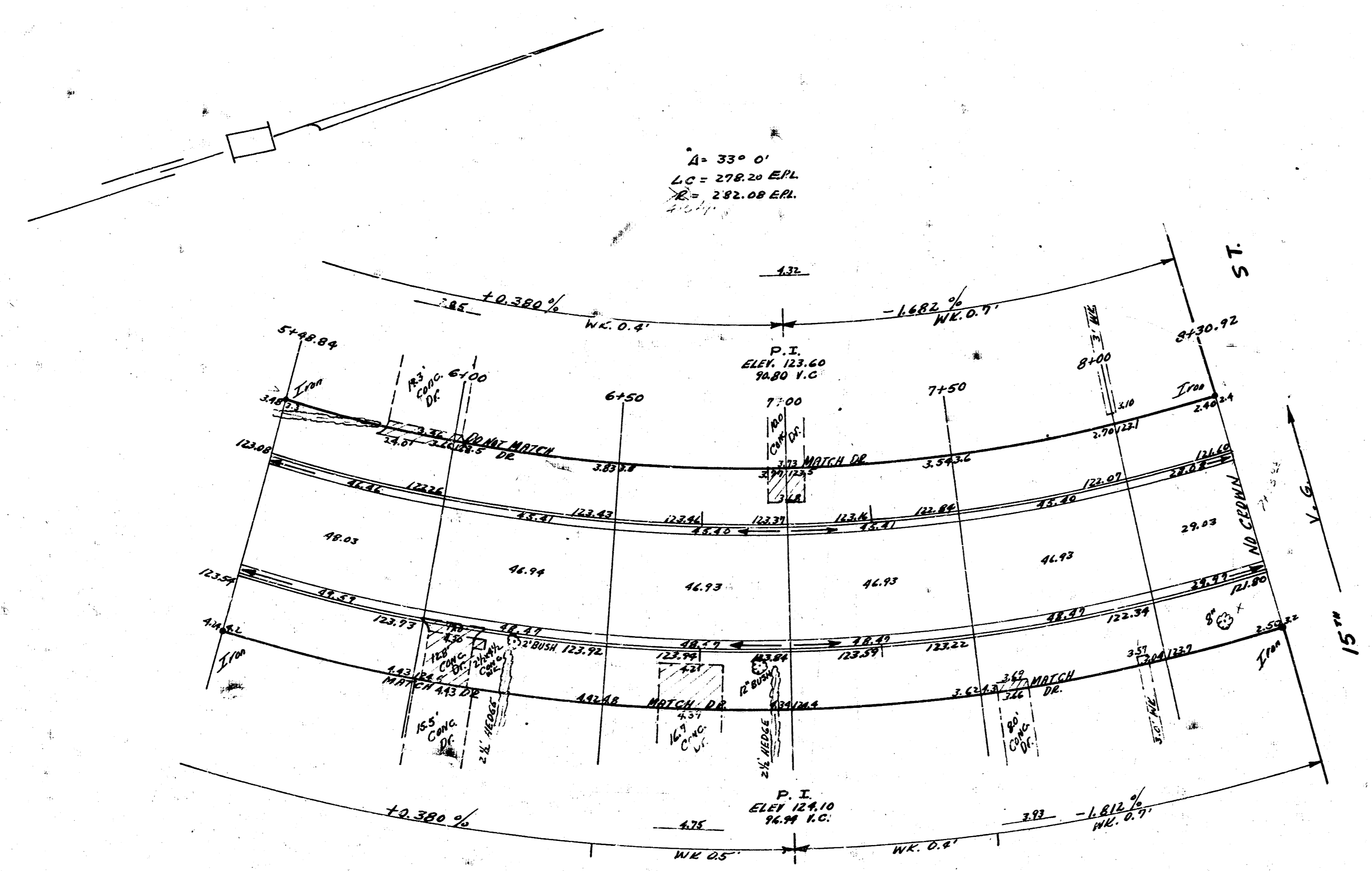
CURVE DATA BASED ON E.P.L. R=11623 A=38°40'

STATIONING	CH. OFF. E.C.B.	CH. OFF. W.C.B.	DEF. L.	TOTAL DEF.
0+00	P.C.			
0+25		26.35	6° 9' 31"	6° 9' 31"
0+50		52.70	6° 9' 31"	12° 18' 2"
0+75.48		79.05	6° 9' 31"	17° 27' 1"

Excavation City  
 P.P. 1161.8 City  
 +10% 116.2 116.2  
 1278.0 Curb C.T. 53.1 Curb C.T.

WOMER DRIVE  
 NL. 14<sup>TH</sup> ST. TO S.L. 15<sup>TH</sup> ST.  
 26-2-30 A.C.  
 CITY OF WICHITA KAN.  
 BE. SMITH CITY ENGINEER  
 AUG. 1958 PROJ. NO C16-225





CURVE DATA BASED ON EAST PROP. LINE R=483.76 Δ=33°

STATIONING	CH. OFF	P.C. CH. OFF	P.V. CH. OFF	TOTAL DEF.
5+00	30.47	45.41	2+ 49' 33"	3+ 50' 33"
6+00	41.26	44.37	2+ 55' 29"	8+ 50' 33"
7+00	41.26	44.37	2+ 55' 29"	11+ 41' 23"
8+00	41.26	44.37	2+ 55' 29"	14+ 30' 0"
8+30.92	30.47	29.37	1+ 48' 31"	14+ 30' 0"

WOMER DRIVE  
 NL 14<sup>TH</sup> ST. TO SL 15<sup>TH</sup> ST.