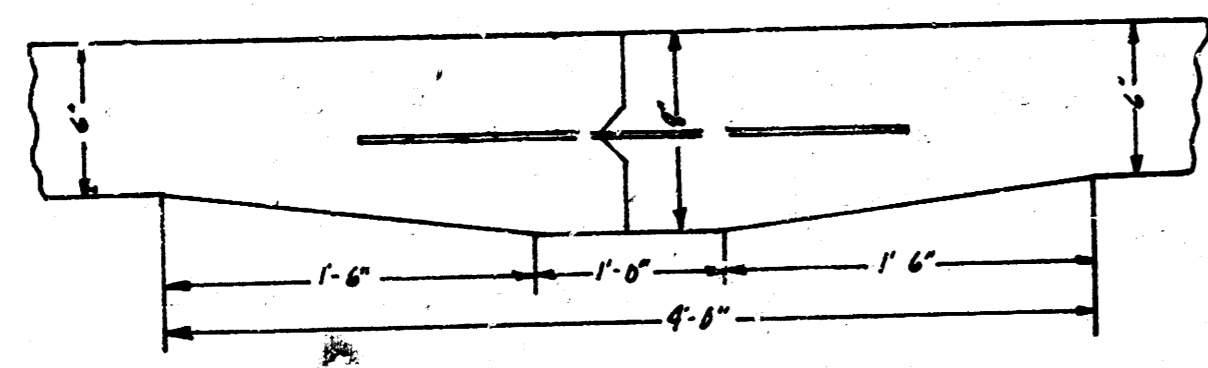
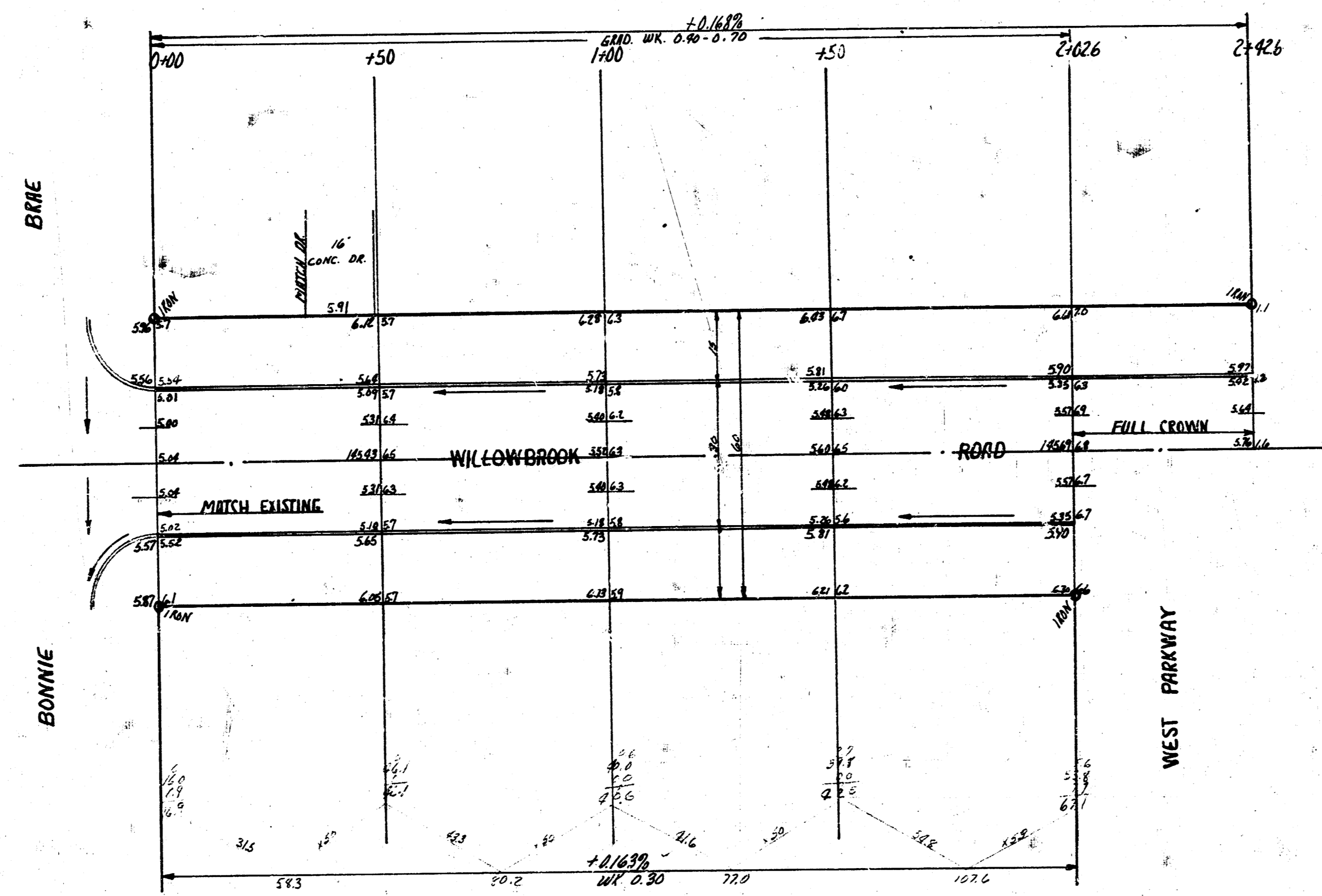


B.M. 144.90 6" IN GLOBE S. END RET. S.W. COR. BONNIE BRAE & WILLOWBROOK  
 BASE LINE ON S. PL.



DETAIL OF MASTIC KEY JOINT  
 NO SCALE  
 USE 3/8" #3 BARS 3' LONG, 2'-6" C.C.

TOTAL EXCAV.

PROP.	CUT	FILL	CITY	FILL
	353.7	136.6	0	34.7
ADJ.	35.2	10.2	10.7	3.2
Cont'd	387.1	24.8	10.7	3.2

34.8 Cr. width

WILLOWBROOK RD.  
 E.L. BONNIE BRAE - E.L. BONNIE BRAE ADDY.  
 30' - CONC. CB.  
 CITY OF WICHITA, KANSAS  
 B.E. SMITH CITY ENGINEER.  
 DATE JUNE 15, 1929 PROJ. NO. - C-13-296



1/2